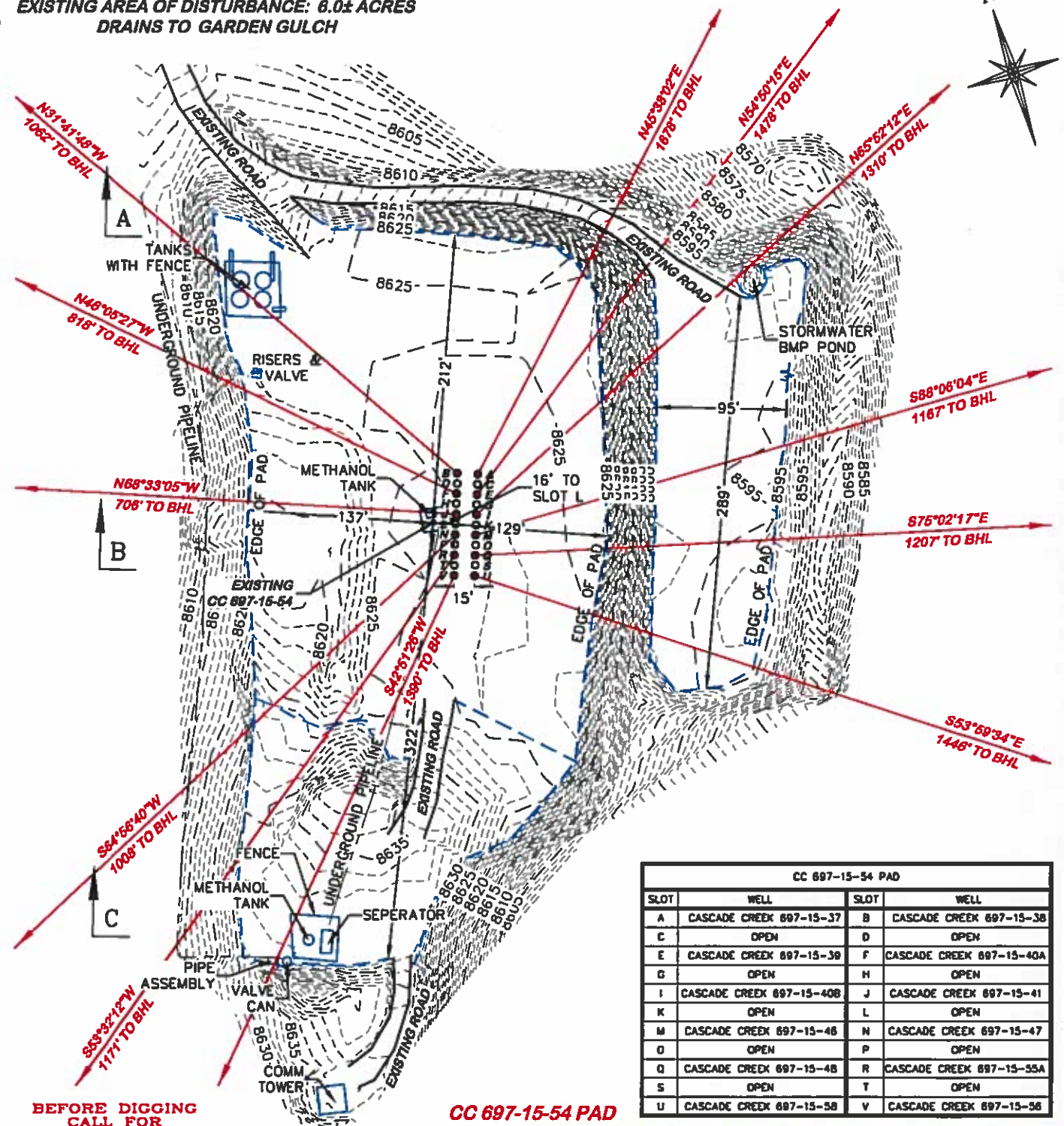


EXISTING ELEVATION: 8625.0'
EXISTING AREA OF DISTURBANCE: 6.0± ACRES
DRAINS TO GARDEN GULCH



NOTE: THE EARTH QUANTITIES ON THIS DRAWING ARE ESTIMATED AND THE USE OF SAID QUANTITIES IS AT THE RESPONSIBILITY OF THE USER.

SCALE FEET



DRIFIN & ASSOCIATES, INC.

(307) 362-6028

1414 ELK ST., ROCK SPRINGS, WY 82901

DRAWN: 9/24/2013 - TCM

SCALE: 1" = 100'

REVISED: 1/29/2014 - TCM

DRG JOB No. 20159

MISC. REVISIONS

EXHIBIT 2

CONSTRUCTION LAYOUT DRAWING 1 OF 4

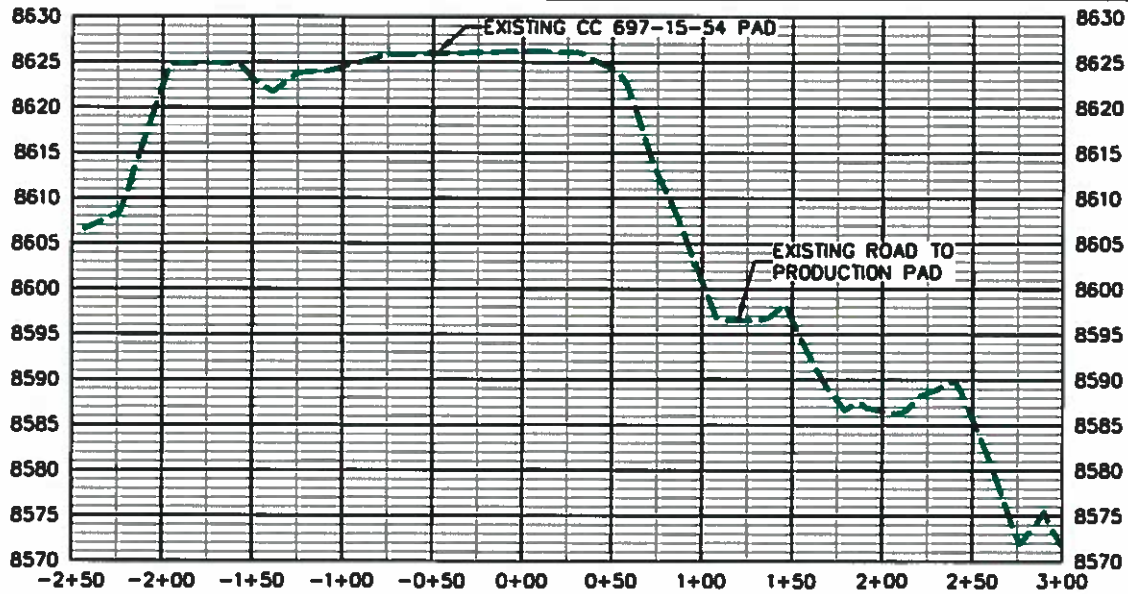
OXY USA WTP LP

**CASCADE CREEK 697-15-54, 37, 38, 39, 40A,
40B, 41, 46, 47, 48, 55A, 56, 58
SWSE, SECTION 15, T.6 S., R.97 W., 6th P.M.,
GARFIELD COUNTY, COLORADO**

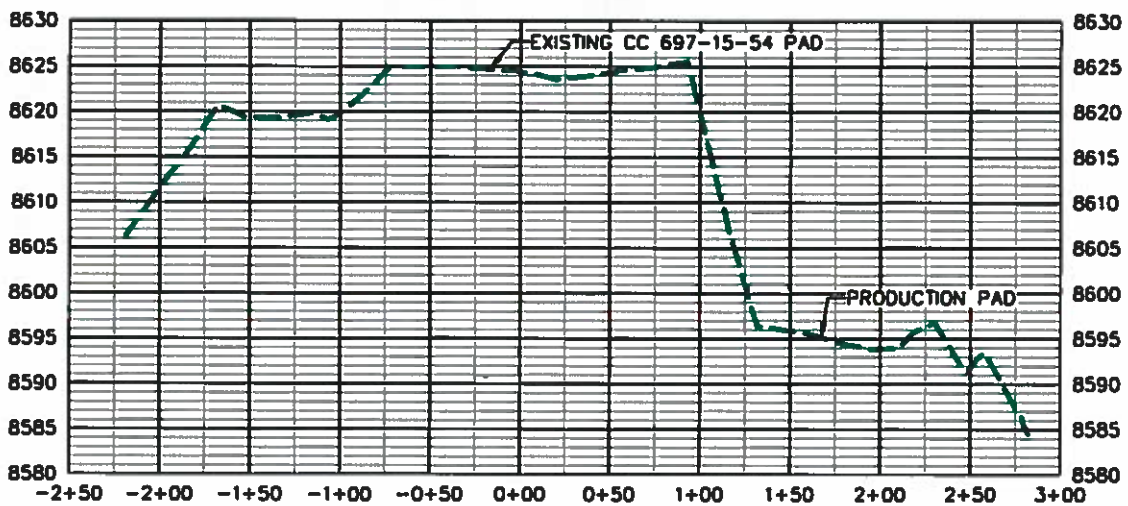
ESTIMATED EARTHWORK

ITEM	CUT	FILL	TOPSOIL	EXCESS
PAD	0 CY	0 CY	0 CY	0 CY
PIT	NONE			NONE
TOTALS	0 CY	0 CY	0 CY	0 CY

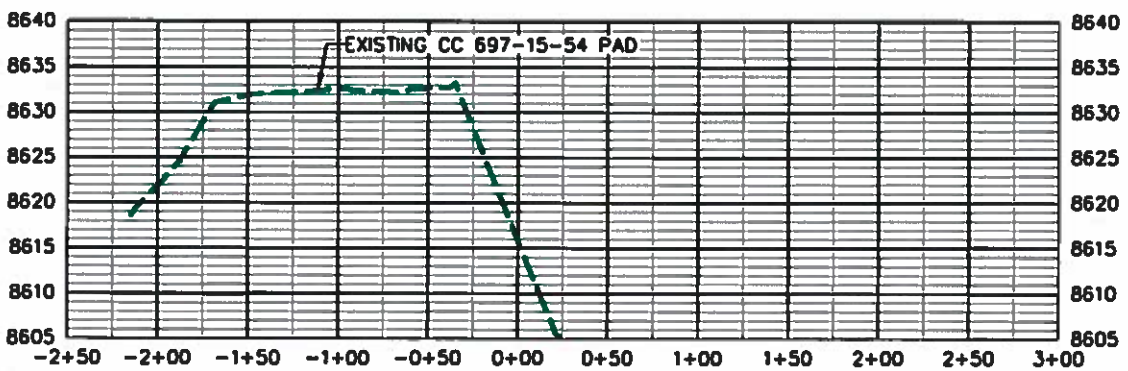
CC 697-15-54 PAD			
SLOT	WELL	SLOT	WELL
A	CASCADE CREEK 697-15-37	B	CASCADE CREEK 697-15-38
C	OPEN	D	OPEN
E	CASCADE CREEK 697-15-39	F	CASCADE CREEK 697-15-40A
G	OPEN	H	OPEN
I	CASCADE CREEK 697-15-40B	J	CASCADE CREEK 697-15-41
K	OPEN	L	OPEN
M	CASCADE CREEK 697-15-46	N	CASCADE CREEK 697-15-47
O	OPEN	P	OPEN
Q	CASCADE CREEK 697-15-48	R	CASCADE CREEK 697-15-55A
S	OPEN	T	OPEN
U	CASCADE CREEK 697-15-58	V	CASCADE CREEK 697-15-56



CROSS SECTION A



CROSS SECTION B



CROSS SECTION C

EXISTING ELEVATION = 8625.0'

CC 697-15-54 PAD



RIFFIN & ASSOCIATES, INC.

(307) 362-6028

1414 ELK ST., ROCK SPRINGS, WY 82901

DRAWN: 9/24/2013 - TCM

SCALE: 1" = 100'

REVISED: 1/29/2014 - TCM

DRG JOB No. 20159

MISC. REVISIONS

EXHIBIT 3

CONSTRUCTION LAYOUT DRAWING 4 OF 4

OXY USA WTP LP
CASCADE CREEK 697-15-54, 37, 38, 39, 40A,
40B, 41, 46, 47, 48, 55A, 56, 58
SWSE, SECTION 15, T. 6 S., R. 97 W., 6th P.M.,
GARFIELD COUNTY, COLORADO