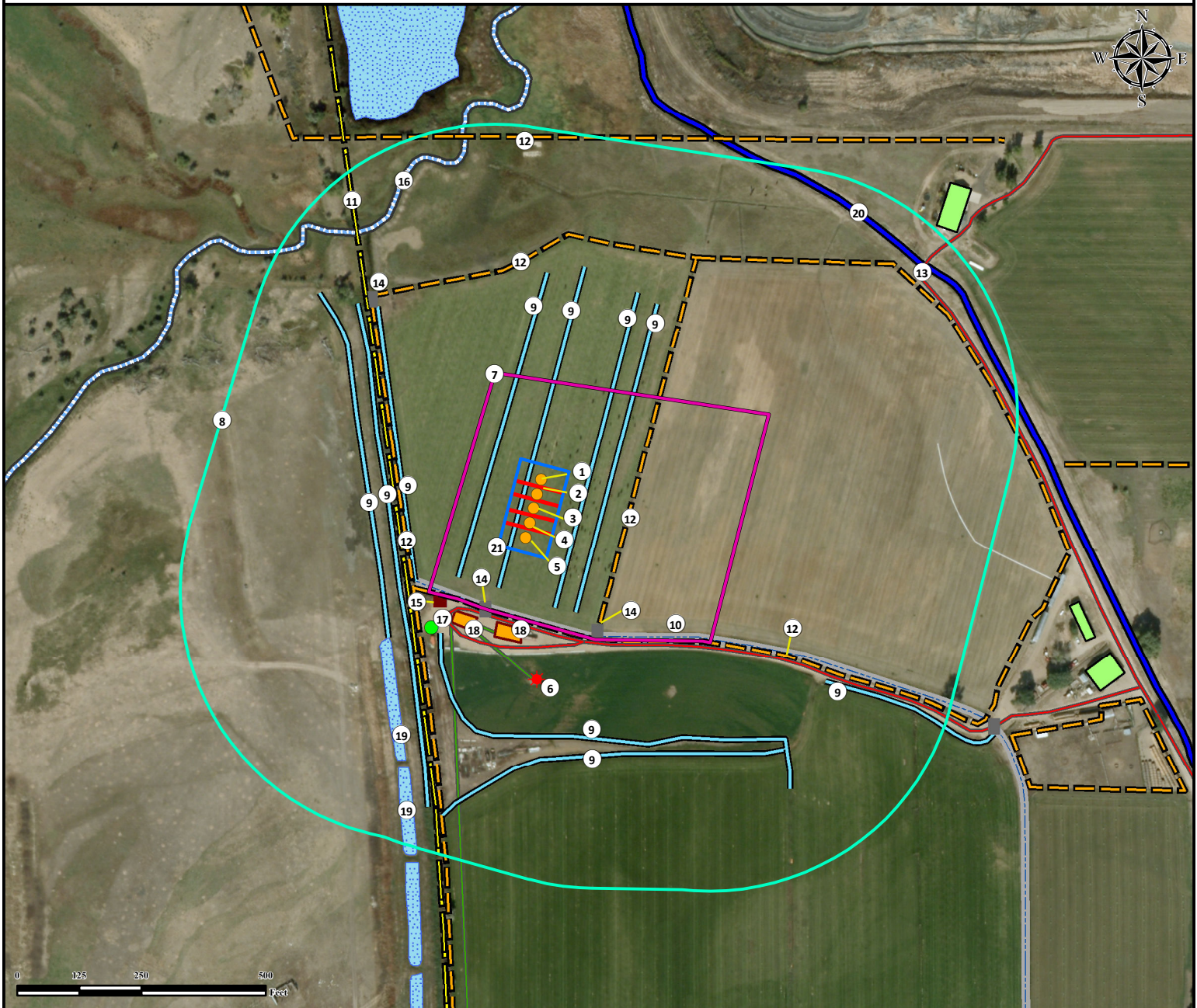


Location Drawing

GEE 15C-25HZ

Horizontal Multi Well Pad

NW¼ NE¼ SECTION 24, TOWNSHIP 2 NORTH, RANGE 67 WEST OF THE 6TH PRINCIPAL MERIDIAN



1. Proposed Well GEE 27N-12HZ.
2. Proposed Well GEE 37N-25HZ.
3. Proposed Well GEE 15C-25HZ.
4. Proposed Well GEE 2C-12HZ.
5. Proposed Well GEE 15N-25HZ.
6. Existing Well WILLIAM E GEE GAS UNIT 1 is ±344' S.
7. Operational Disturbance Area.

8. 500' Radius.
9. Ditches are ±27' NW, ±92' SE, ±107' NW, ±135' SE, ±255' SW, ±287' SW, ±313' SW, ±324' SW, ±505' S, and ±682' SE.
10. Concrete Ditch is ±216' SW.
11. Powerline is ±273' SW.
12. Fences are ±188' SE, ±221' SW, ±263' SW, ±483' NW and ± 747' N.
13. Private Roads are ±232' SW and 904' NE.

14. Gates are ±224' SW, ±279' SE, and ±532' NW.
15. ECD is ±263' SW.
16. Stream is ±652' NW.
17. Oil and Gas Equipment is ±315' SW.
18. Existing Facilities are ±239' SW and ±247' SW.
19. Ponds are ±390' SW and ±578' SW.
20. Canal is ± 839' NE.
21. Pump Jack Operations Area.

Legend	Proposed Well	Disturbance Area	Building Unit	Concrete Ditch
Existing Well	500' Radius	Building	Pipeline	
Gate/Cattle Guard	Facility Enclosure	Fence	Powerline	
ECD	Pond	Ditch	Private Road	
O&G Equipment	Pump Jack Operations Area	Canal	Stream	

Reference Location

** All measurements are made from Reference Well GEE 15C-25HZ **

Lat: 40.128683° Long:-104.835384° (NAD83)
Elevation: 4859 Feet

Surface Use: Flood Irrigated

Nearest Building Unit: 990' NE



Use our resources to find yours!
www.petro-fs.com
(303) 928-7128

Field Date: 06/17/2013
Drafting Date: 02/11/2014
Drafter: SMG
Revision: 3

Data Sources:
- Aerial courtesy of Anadarko Petroleum Corporation (2010)

Prepared for:

Anadarko
Petroleum Corporation
KERR-MCGEE OIL & GAS ONSHORE LP