



**COMPLETION  
& PRODUCTION  
SERVICES CO.**

**GammaRay,  
Cement Bond, Variable Density,  
CCL**

Company Noble Energy		Company Noble Energy	
Well KC B 12-15	Well KC B 12-15		
Field Wattenberg	Field Wattenberg		
County Weld	County Weld		
State Colo	State Colo		
Location: API #: 0512321415		Other Services	
SEC 12 TWP 5N RGE 64W			
Permanent Datum	Ground Level	Elevation	4600
Log Measured From	Kelley Bushing		
Drilling Measured From	Kelley Bushing		
Elevation		K.B. 4610	
		D.F.	
		G.L. 4600	
Date	1-22-14		
Run Number	one		
Depth Driller	6877		
Depth Logger	1761		
Bottom Logged Interval	1760		
Top Log Interval	surface		
Open Hole Size			
Type Fluid	water		
Density / Viscosity			
Max. Recorded Temp.			
Estimated Cement Top			
Time Well Ready			
Time Logger on Bottom			
Equipment Number	703		
Location			
Recorded By	Chuck Briggs		
Witnessed By	Mr. Tony Mathias		
Borehole Record		Tubing Record	
Run Number	Bit	From	To
		Size	Weight
			From
			To
Casing Record	Size	Wgt/Ft	Top
Surface String	8 5/8	24	surface
Prot. String			
Production String	4 1/2		surface
Liner			6869

<<< Fold Here >>>

All interpretations are opinions based on inferences from electrical or other measurements and we cannot and do not guarantee the accuracy or correctness of any interpretation, and we shall not, except in the case of gross or willful negligence on our part, be liable or responsible for any loss, costs, damages, or expenses incurred or sustained by anyone resulting from any interpretation made by any of our officers, agents or employees. These interpretations are also subject to our general terms and conditions set out in our current Price Schedule.

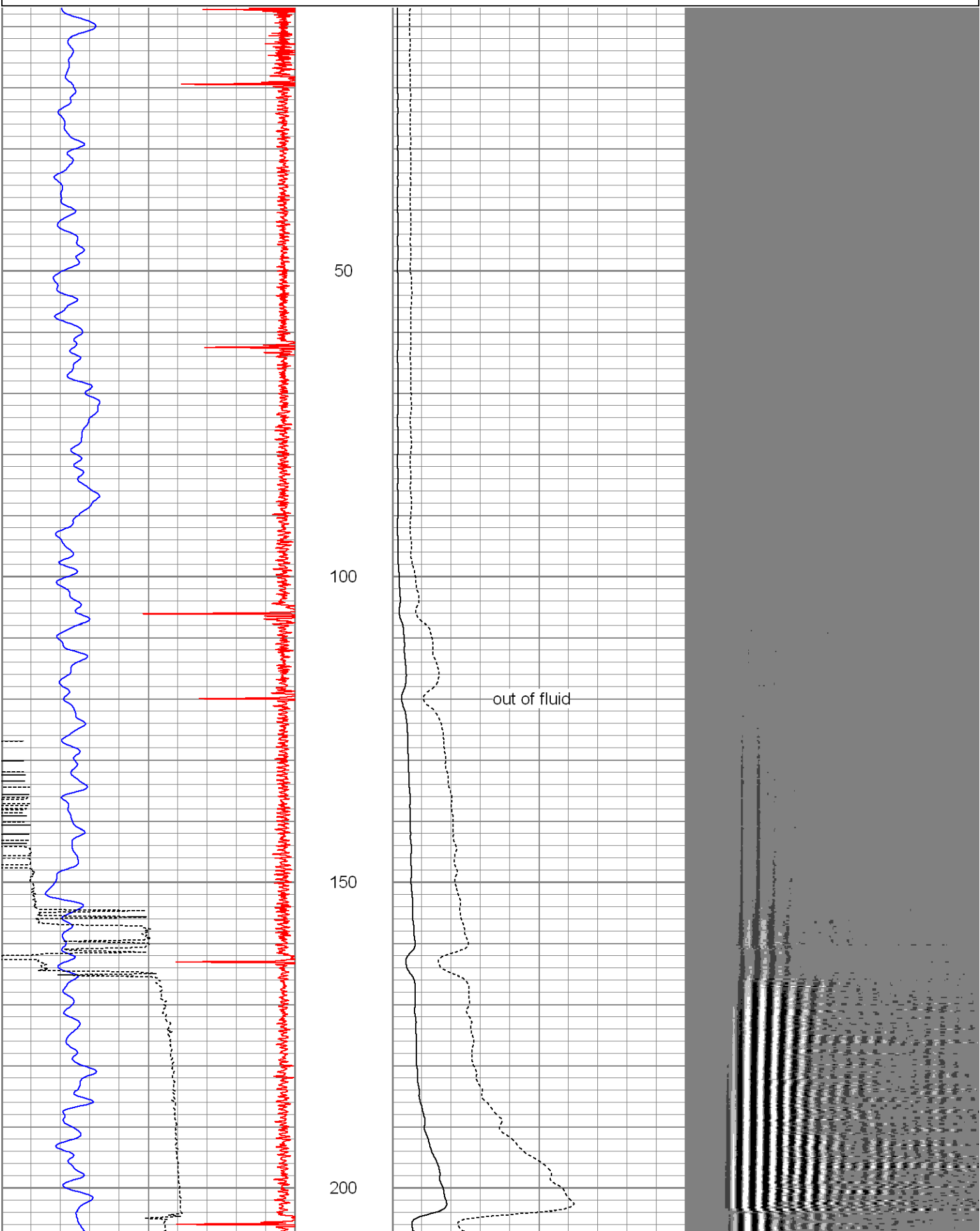
Comments

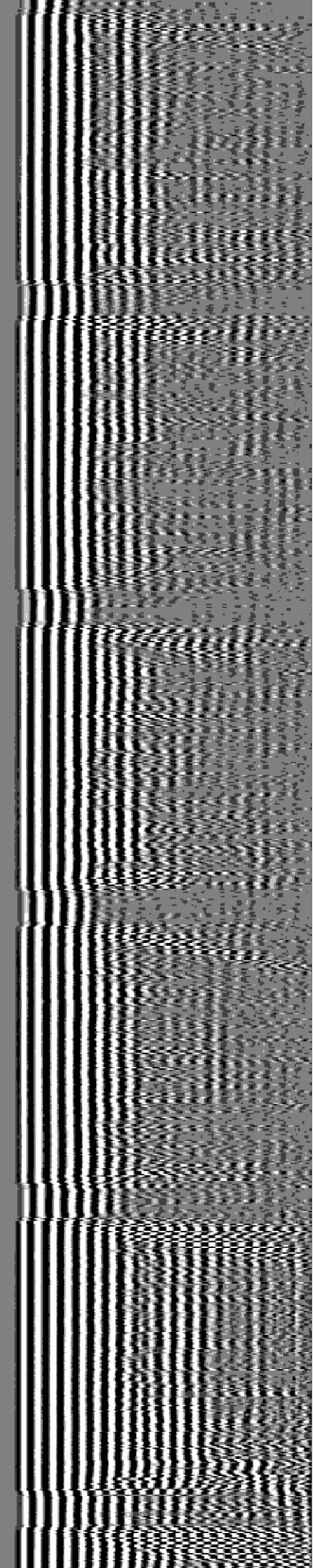
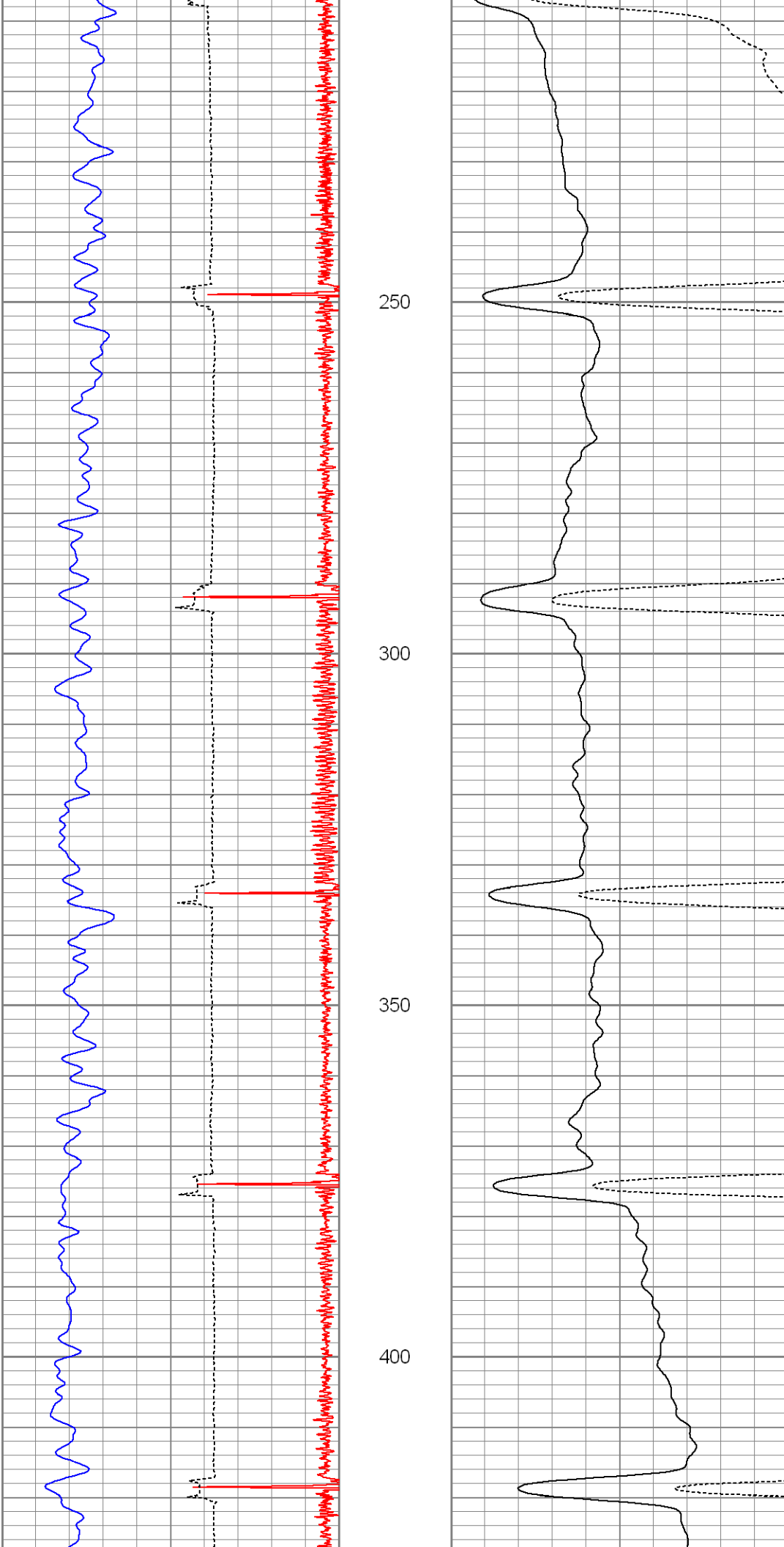
Database File: kcb1215cbl.db  
Dataset Pathname: pass5  
Presentation Format: nuexcbl  
Dataset Creation: Wed Jan 22 08:12:54 2014 by Log Open-Cased 071220  
Charted by: Depth in Feet scaled 1:240

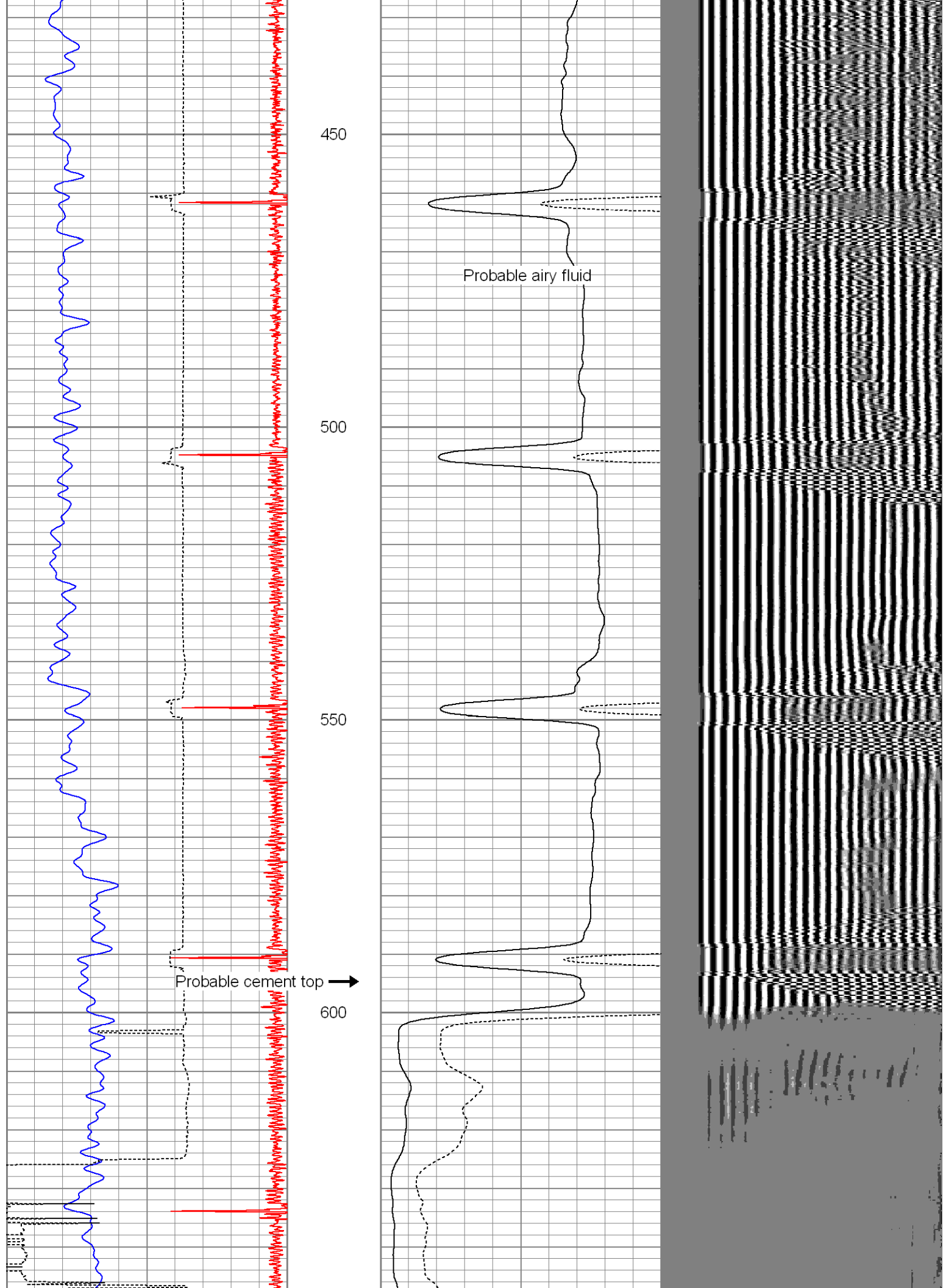
8	CCL	-0.3
0	Gamma Ray (GAPI)	200
340	TT3 (usec)	200

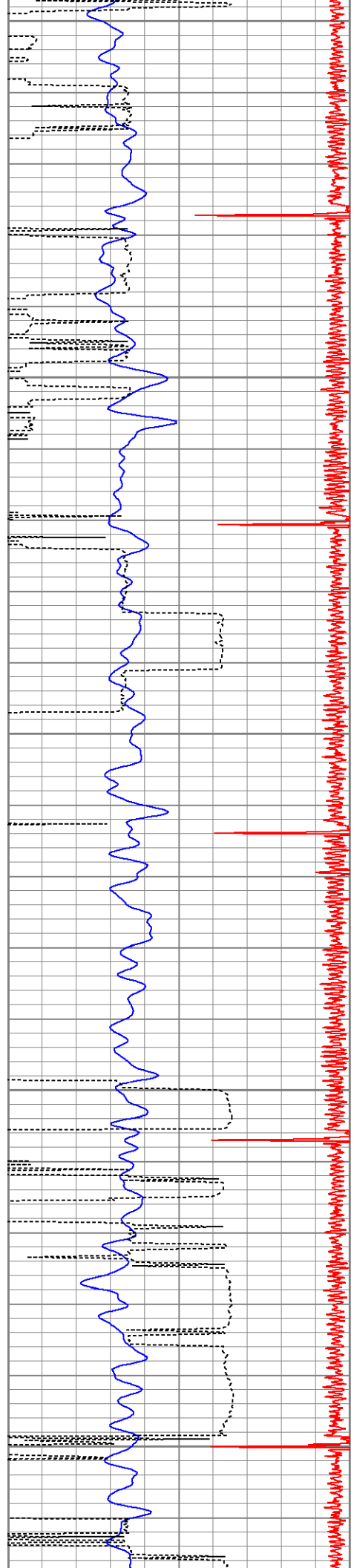
0	Amplified Amplitude (mV)	30	200
0	Amplitude (mV)	100	

V D L 1200









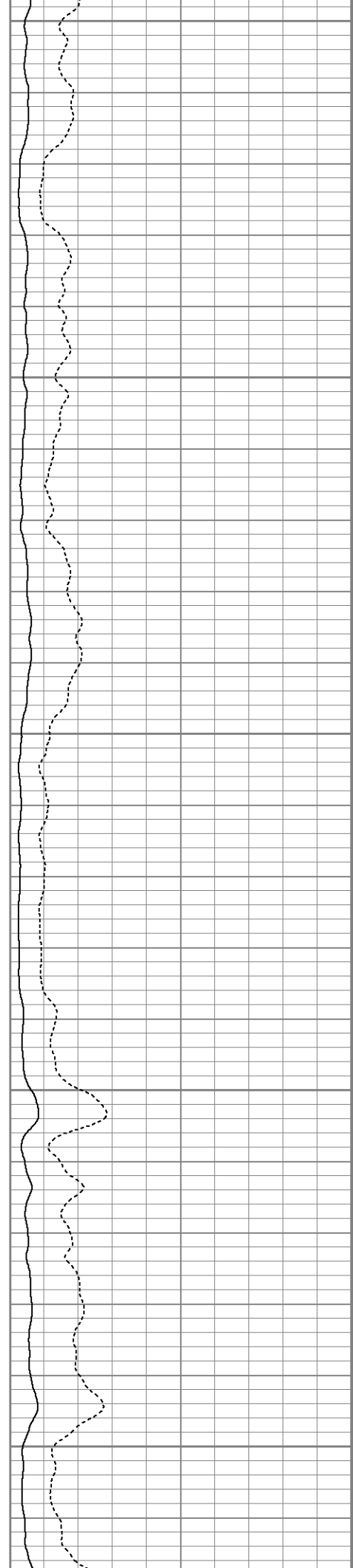
650

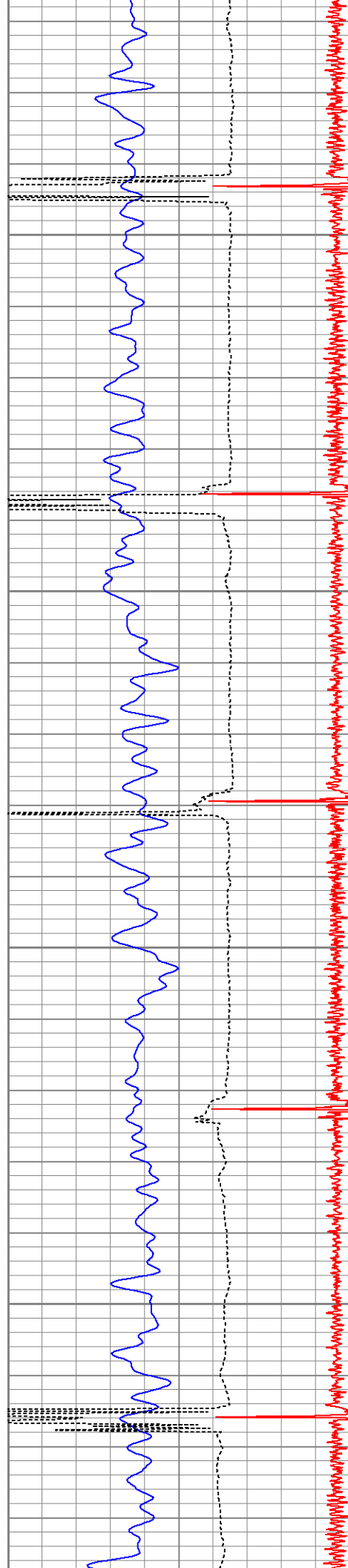
700

750

800

850



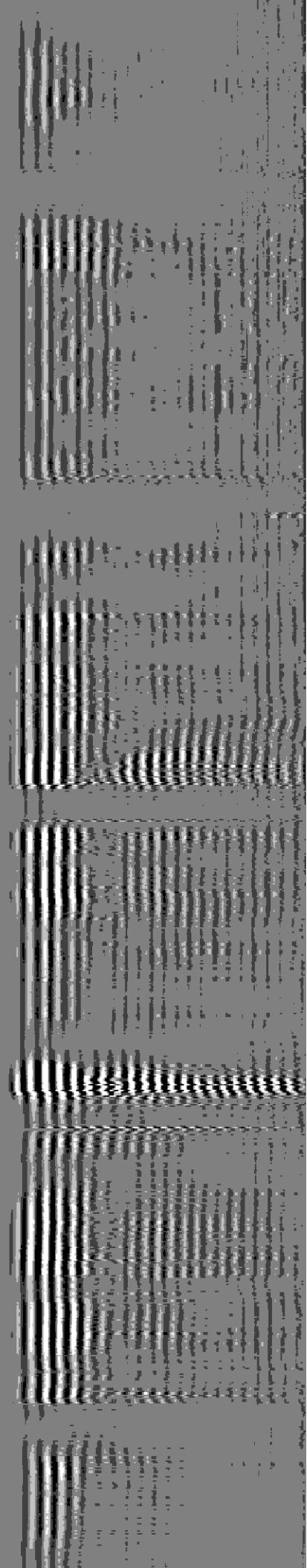
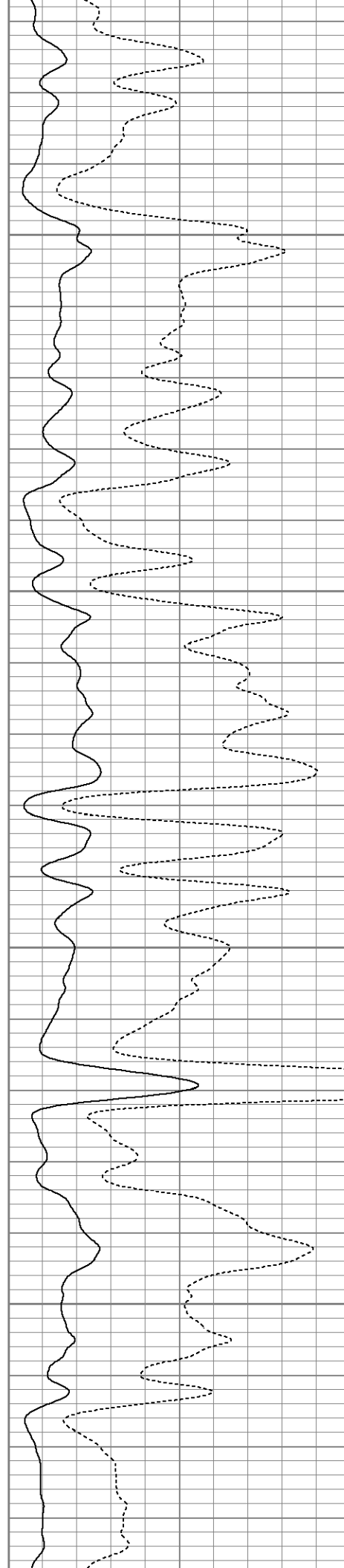


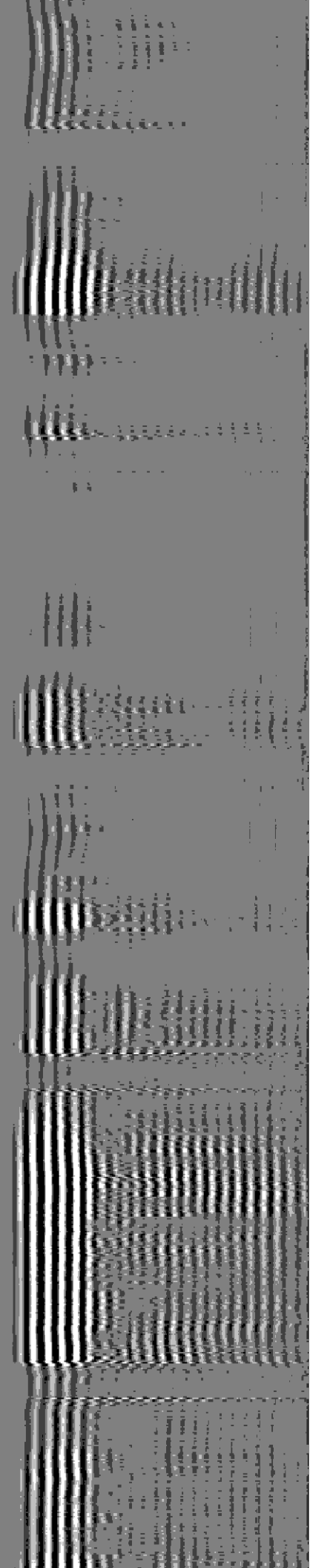
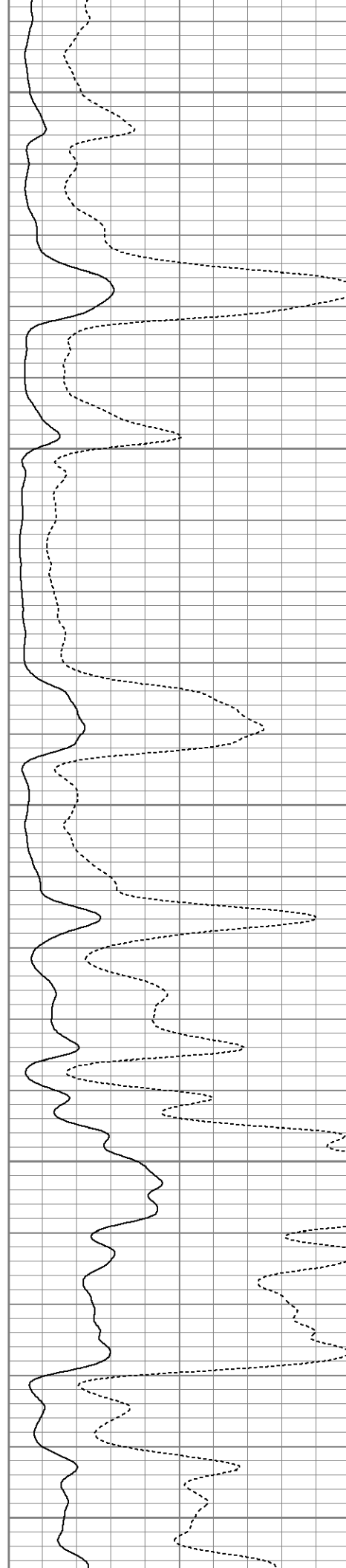
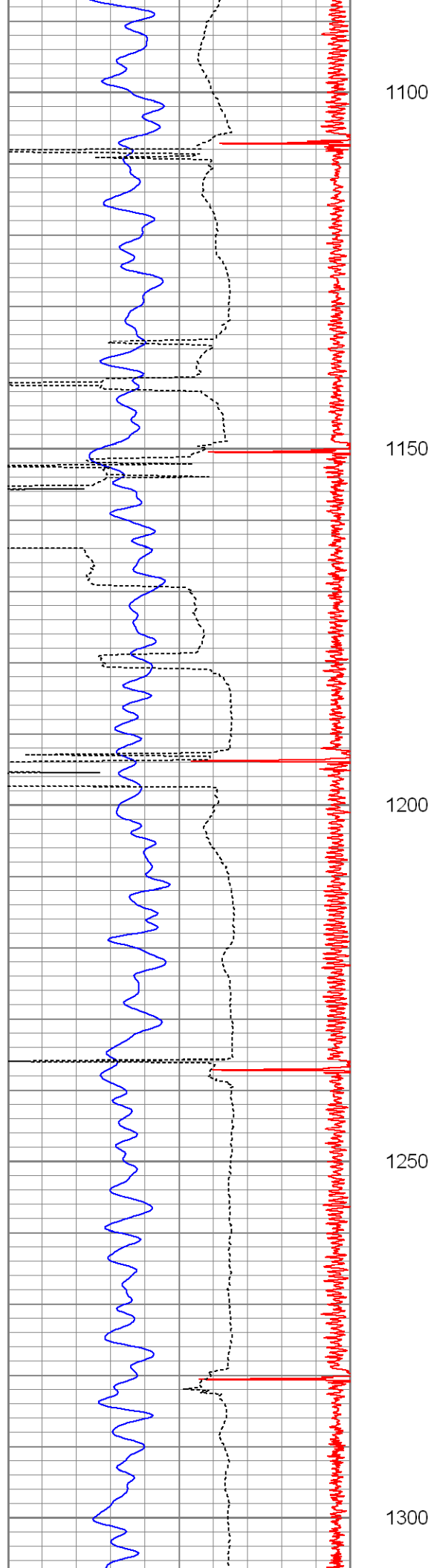
900

950

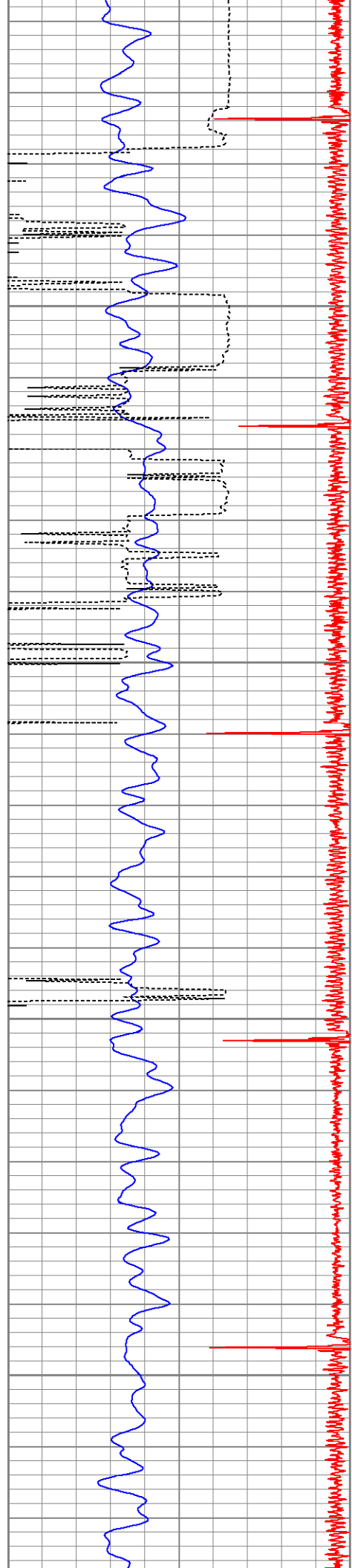
1000

1050







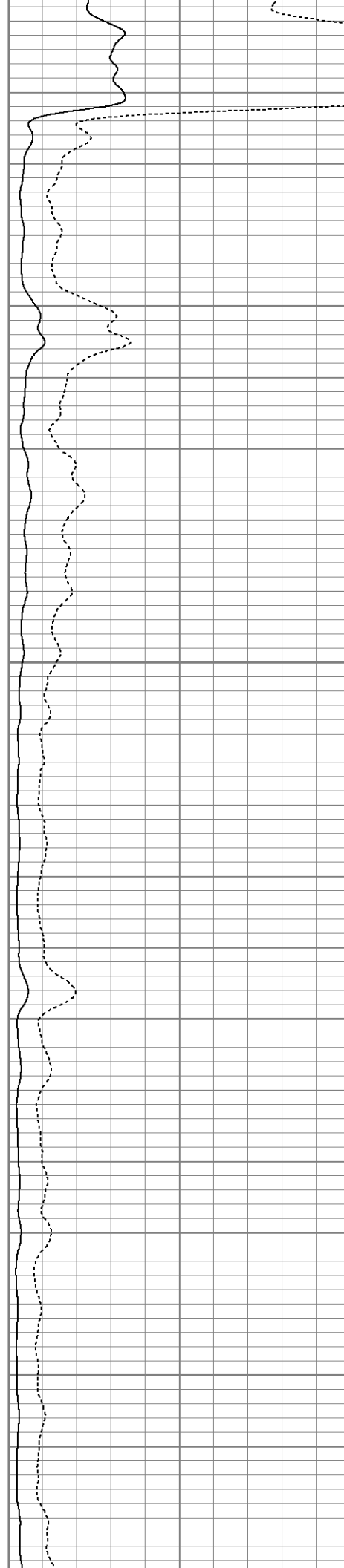


1350

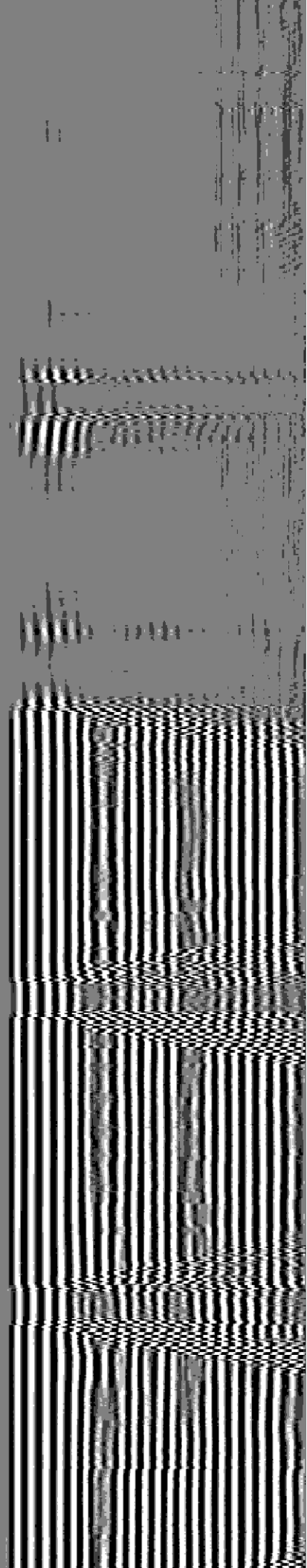
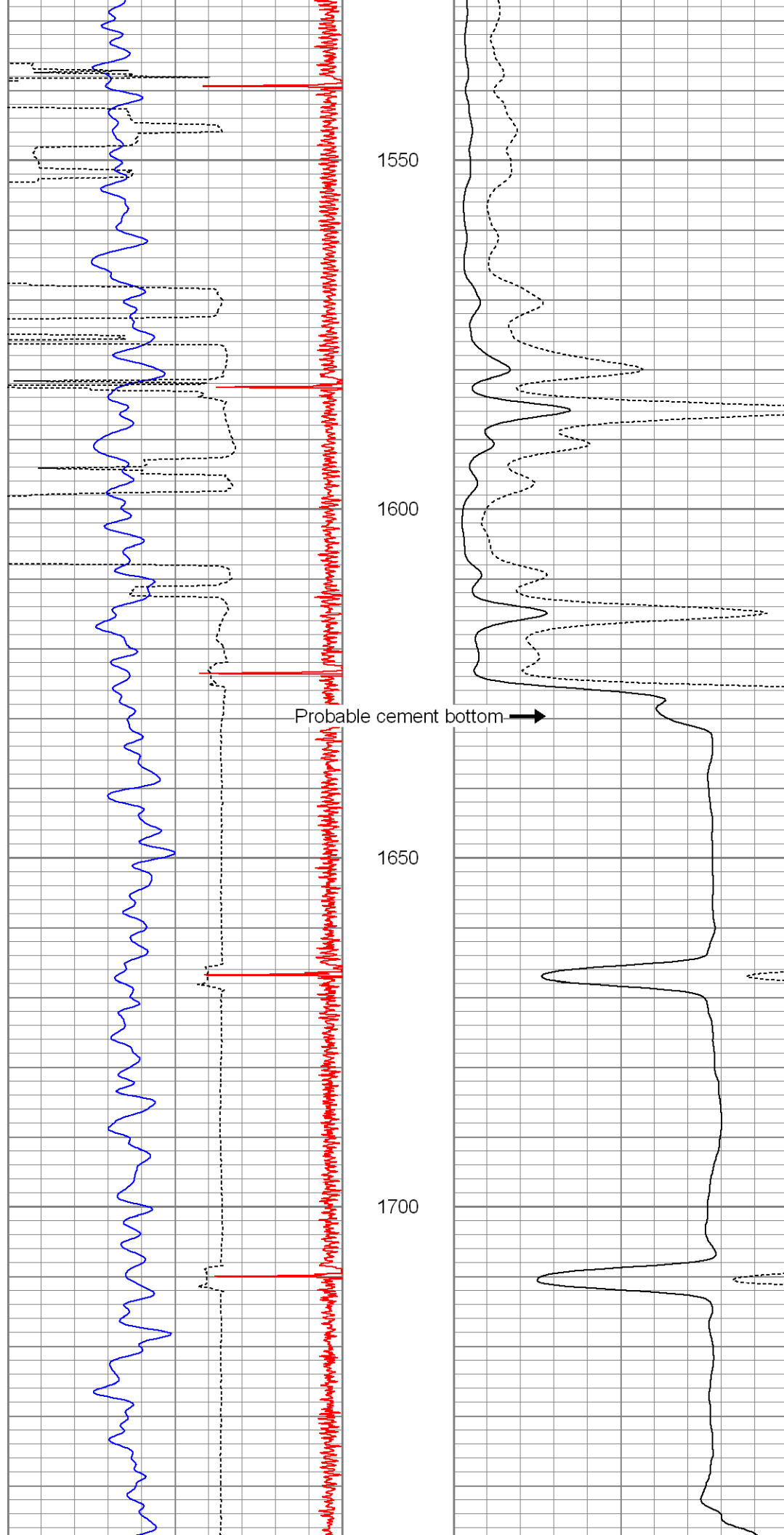
1400

1450

1500

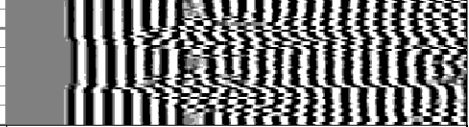
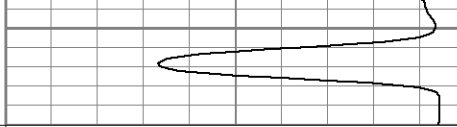








1750



8	CCL	-0.3
0	Gamma Ray (GAPI)	200
340	TT3 (usec)	200

0	Amplified Amplitude (mV)	30
0	Amplitude (mV)	100

200	V D L	1200
-----	-------	------