

Baker Atlas

File No:	Company	COLORADO INTERSTATE GAS	
551562	Well	FLANK #10	
API No:	Field	FLANK	
05-009-05055	County	BACA	State COLORADO

Location	Other Services	
	VERT I LOG NEUTRON/GAMMA RAY	
SEC 8	TWP 34S	RGE 42W

Permanent Datum	G.L.	Elevation	3751 ft
Log Measured From	G.L.	0 ft	Above P. D.
Drill Measured From	GROUND LEVEL		
			Elevations KB N/A DF N/A GL 3751 ft

Date	29 JANUARY 2011
Run	ONE
Service Order	551562
Depth Driller	5013 ft
Depth Logger	4560 ft
Bottom Logged Interval	4560 ft
Top Logged Interval	0 ft
Time Started	8:00
Time Finished	11:30
Operator Rio Time	3.5 HOURS
Type of Fluid in Hole	WATER
Fluid Density	8.34 lbm/gal
Salinity	N/A
Fluid Level	42 ft
Logged Cement Top	NOT LOGGED
Wellhead Pressure	0 psi
Maximum Hole Deviation	N/A
Nominal Logging Speed	30 fpm
Maximum Recorded Temperature	N/A
Reference Log	CBL/VDL
Reference Log Date	12 OCT. 1984
Equipment No.	4247
Location	WWD, OK
Recorded By	ED NORBURY
Witnessed By	MR. STD KRAALIER

- FOLD HERE

In making Interpretations of logs, our employees will give the customer the benefit of their best judgement. But since all Interpretations are opinions based on Inferences from electrical or other measurements, we cannot, and we do not guarantee the accuracy or correctness of any Interpretation. We shall not be liable or responsible for any loss, cost, damages, or expenses whatsoever incurred or sustained by the customer resulting from any Interpretation made by any of our employees.

Borehole Record		
Bit Size	From	To
17.25 in	0 ft	83 ft
12.25 in	83 ft	1393 ft
7.875 in	1393 ft	5013 ft

Casing Record				
Size	Weight	Grade	From	To
13.375 in	48 lbm/ft	H-40	0 ft	82 ft
8.625 in	24 lbm/ft	J-55	0 ft	1390 ft
5.5 in	14 lbm/ft	J-55	0 ft	4716 ft

Remarks
LOG CORRELATED TO SCHLUMBERGER CEMENT BOND LOG/VARIABLE DENSITY LOG
DATED 12 OCTOBER 1984
TOOL CAME OUT OF HOLE COVERED IN PARAFFIN

Equipment Data			
Drill Bit	Tool Joint	Spigot Neck	Spigot Neck
Drill Bit	Tool Joint	Spigot Neck	Spigot Neck

MAIN PASS  
RECORDED AT 0 PSI

## DEPTH OFFSETS

SERIES	DEPTH OFFSET	ACQUIRED CURVES					
1426XA	-17.580	ACAL	ANR	AR1	AR2	AR3	AR4
		AR5	AR6	AR7	AR8	CHV	FPR2
		FPR3	FPR5	TT3	TTR1	TTR2	TTR3
		TTR4	TTR5	TTR6	TTR7	TTR8	XAMP
1426XA	-16.580	AFAR	SIG	TT5			
2460XA	-7.710	CCL					
0100XA	-5.100	CD					

2460XA  
2460XA

-5.420  
0.000

GR  
NEU

Created by : RAL, v4.8.008

Plotted by : PlotMgr, v5.4.504

Company : COLORADO INTERSTATE GAS

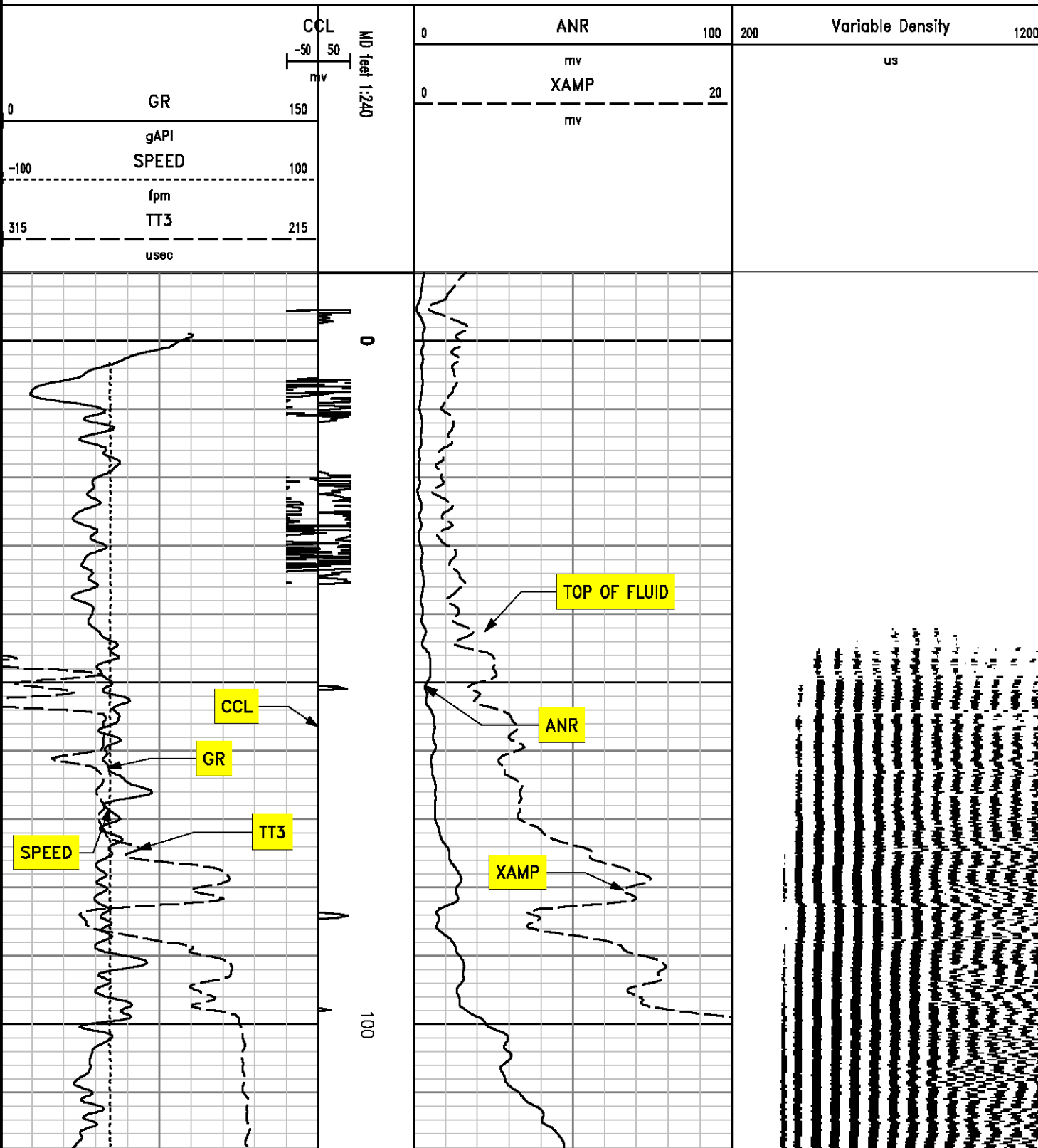
Well : FLANK #10

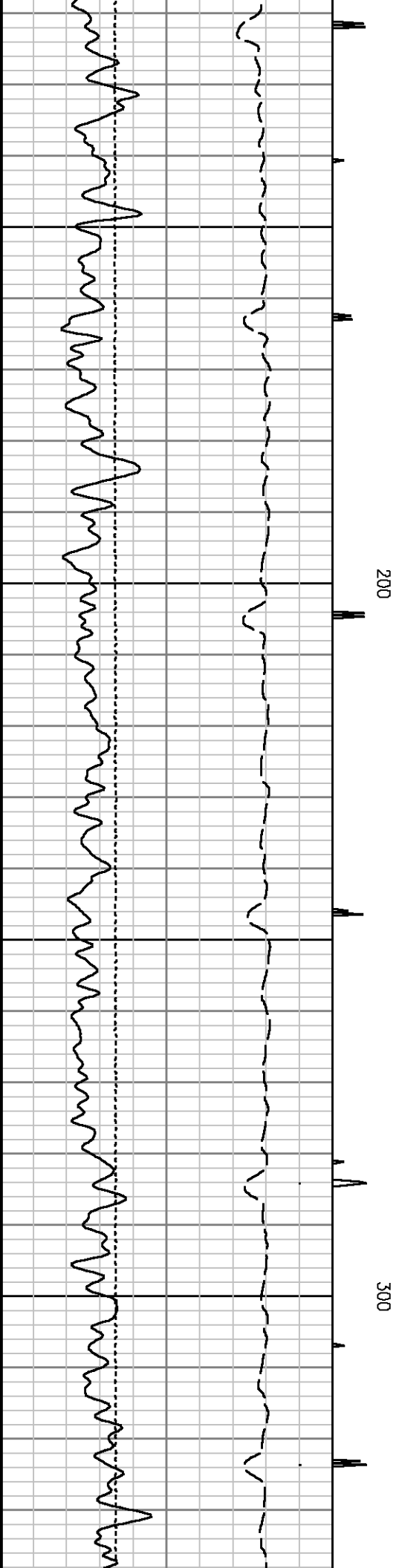
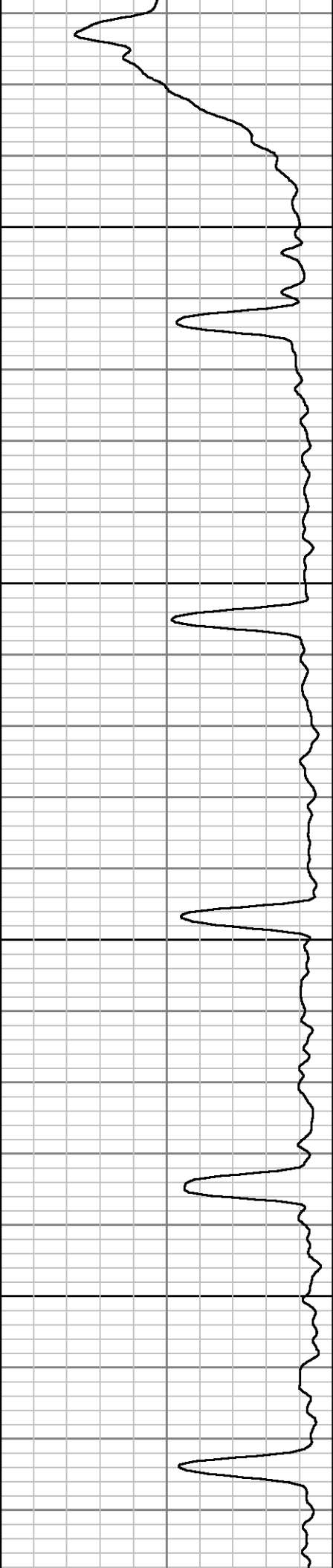
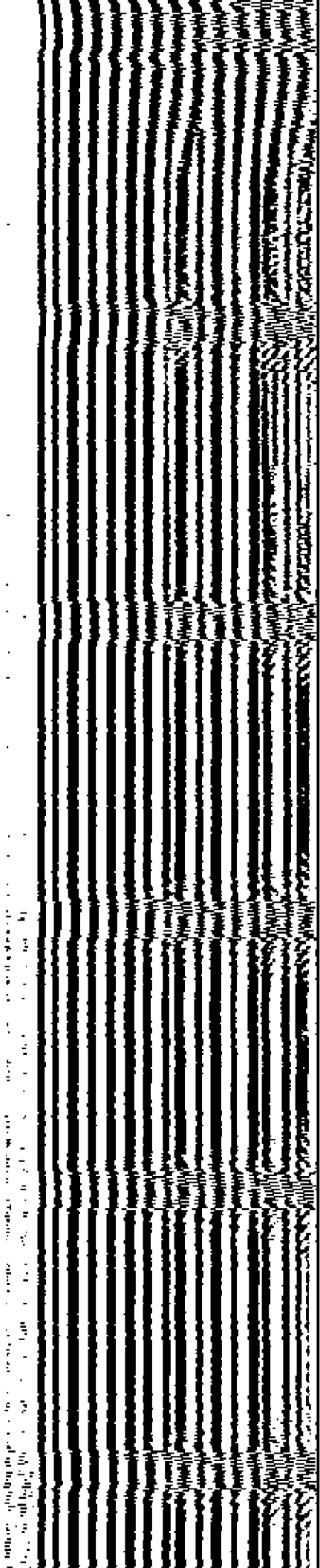
File Name : c:\welldata\cb1562\main.xtf

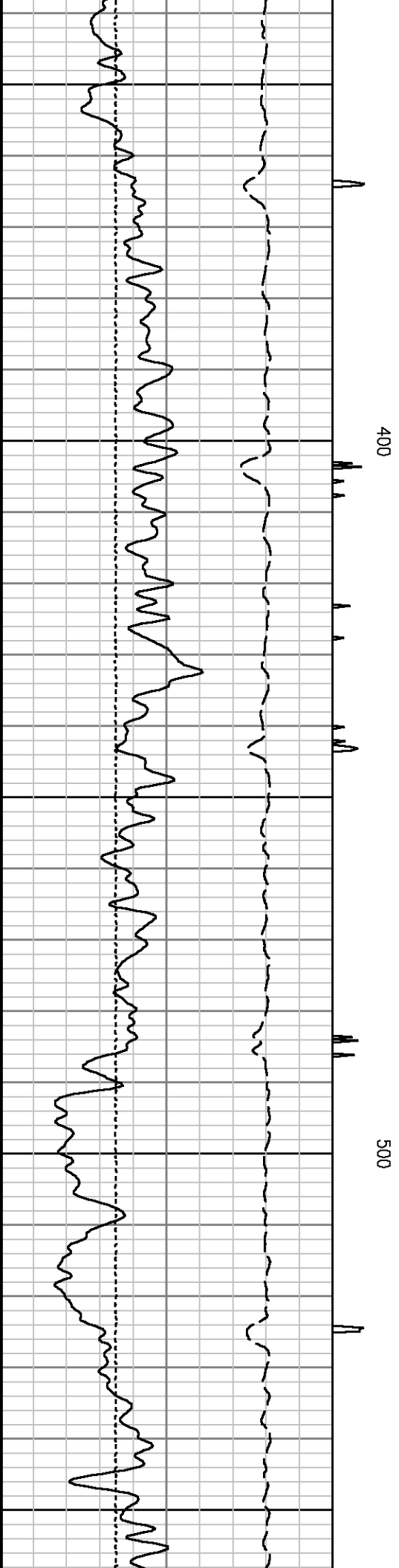
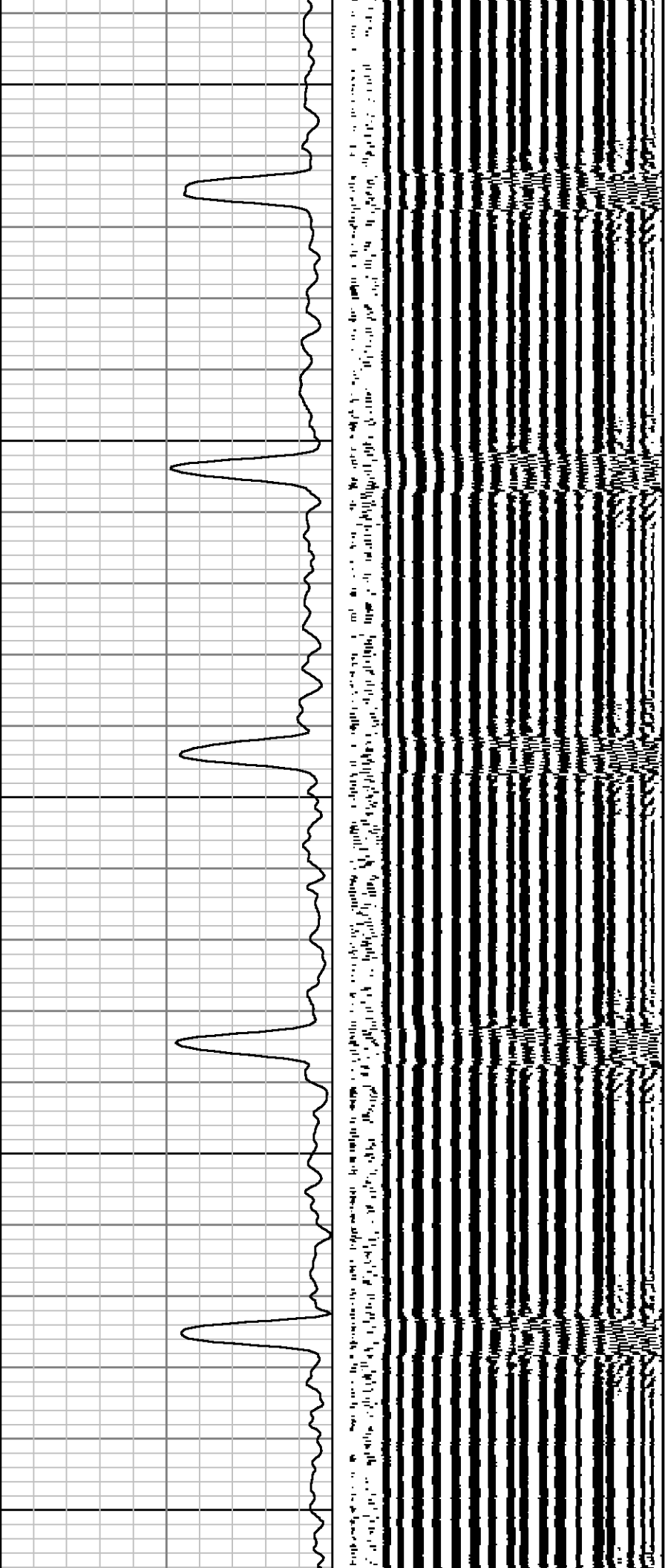
Mode : PlotMgr 5.4.504

Interval : -10.00 - 4562.00 feet UP

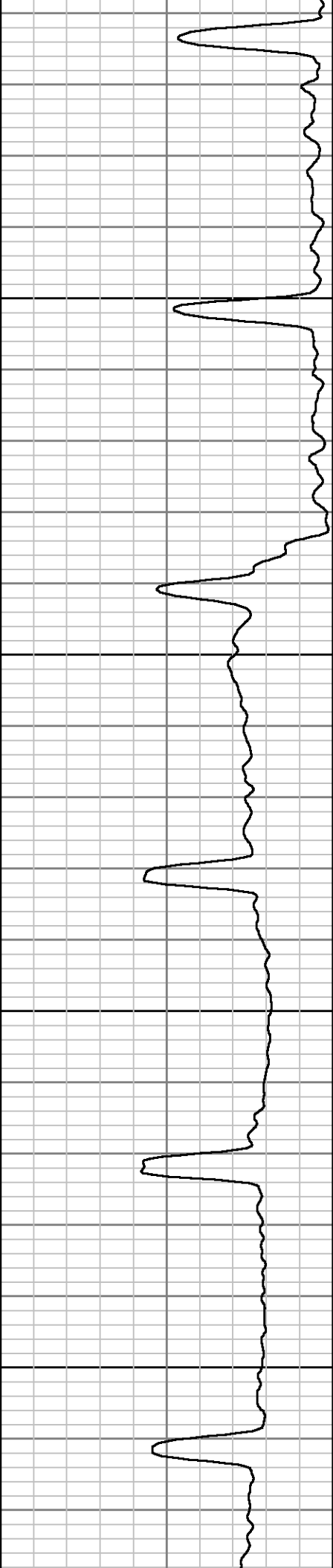
Created : 1/29/2011 9:00:12 AM





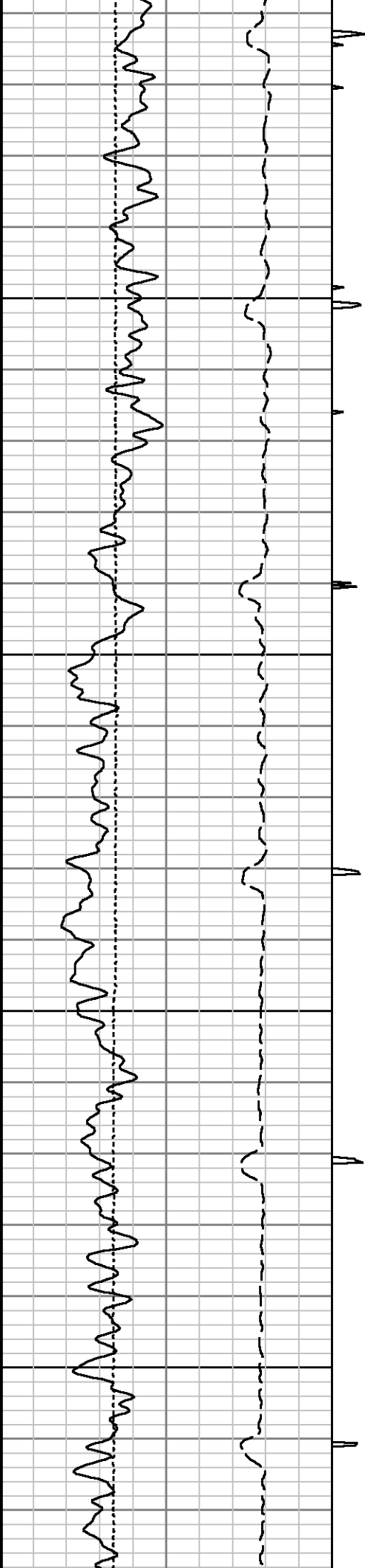


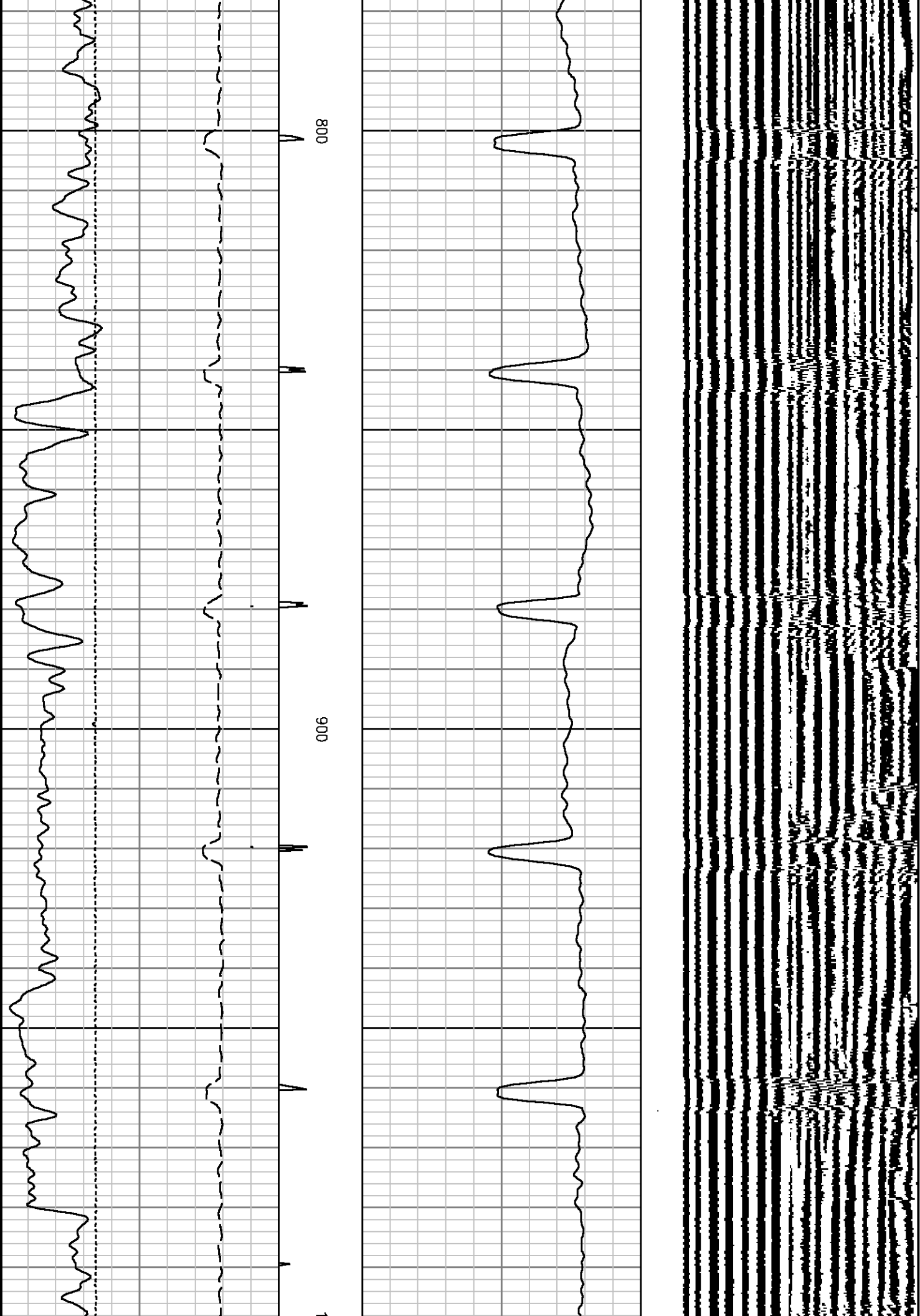
1000 900 800 700 600 500 400 300 200 100 0

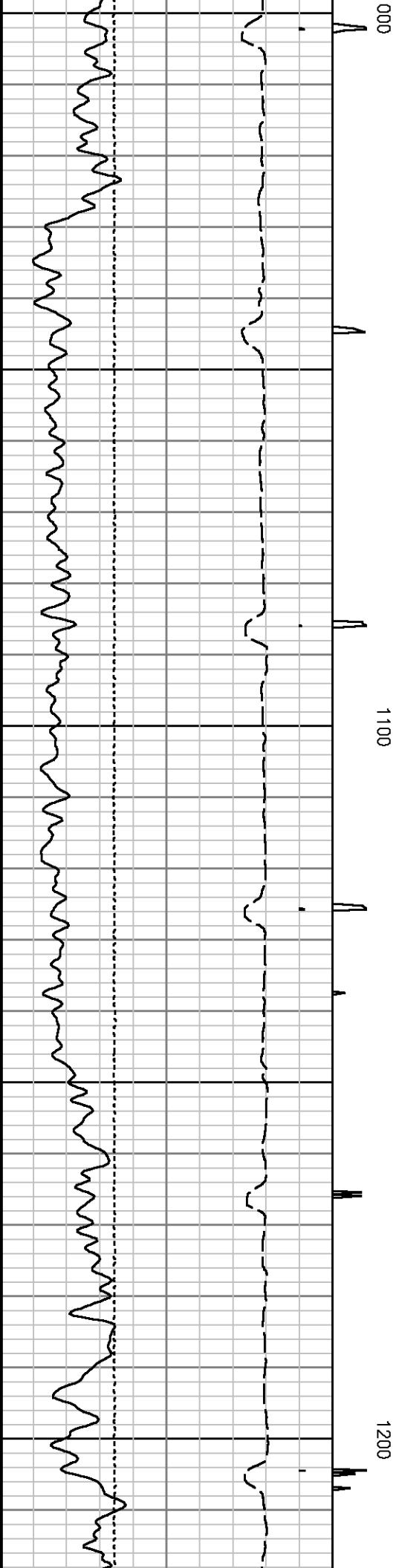
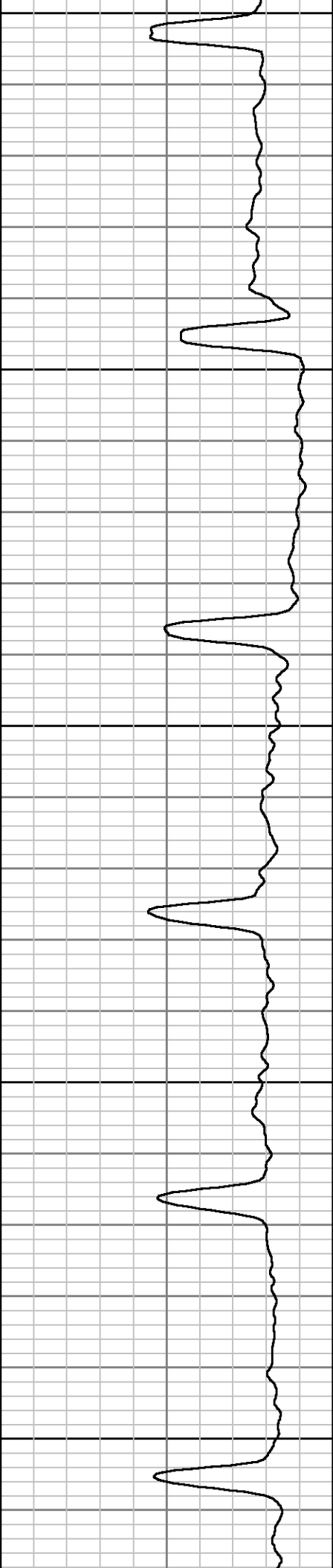
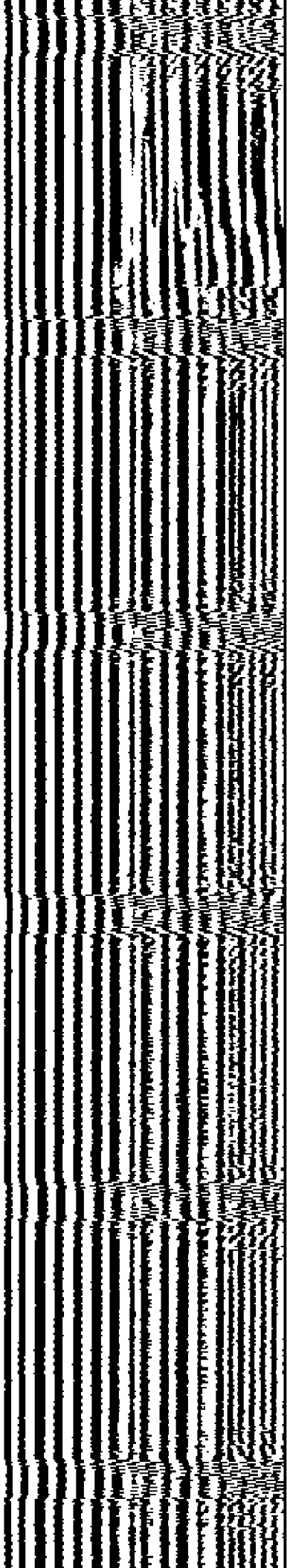


600

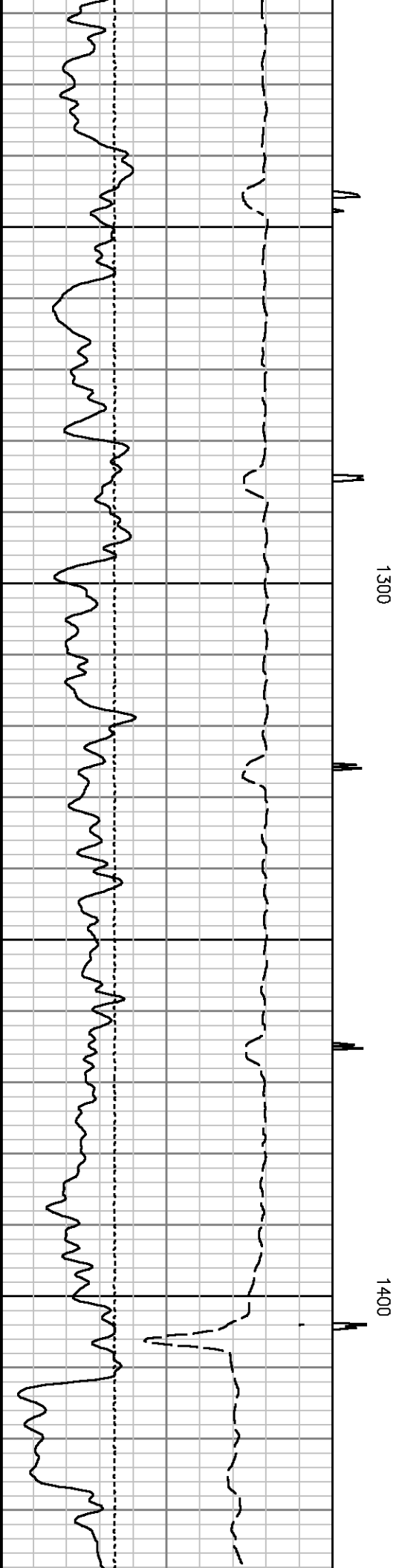
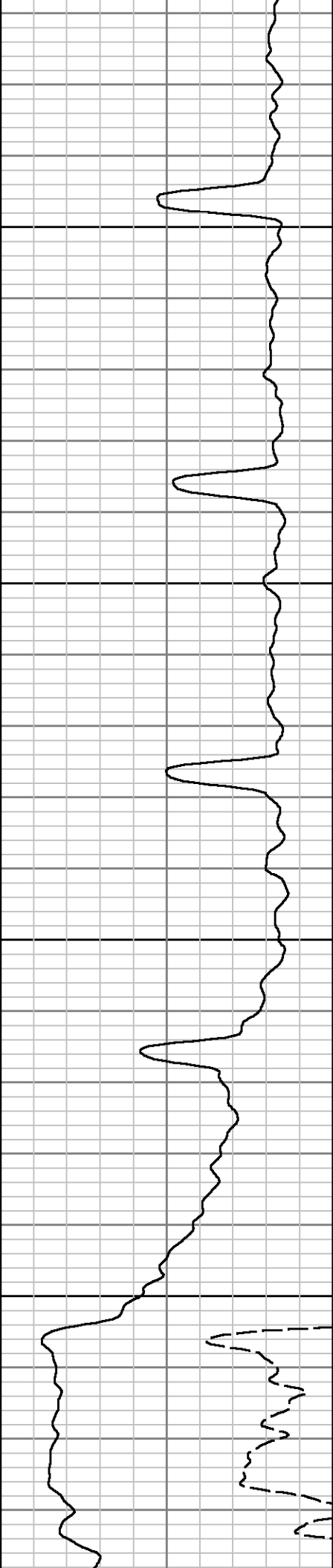
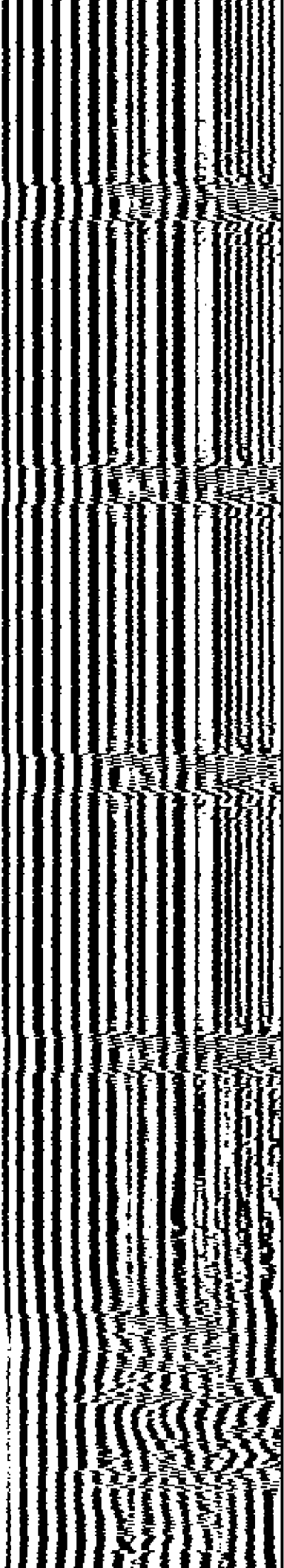
700

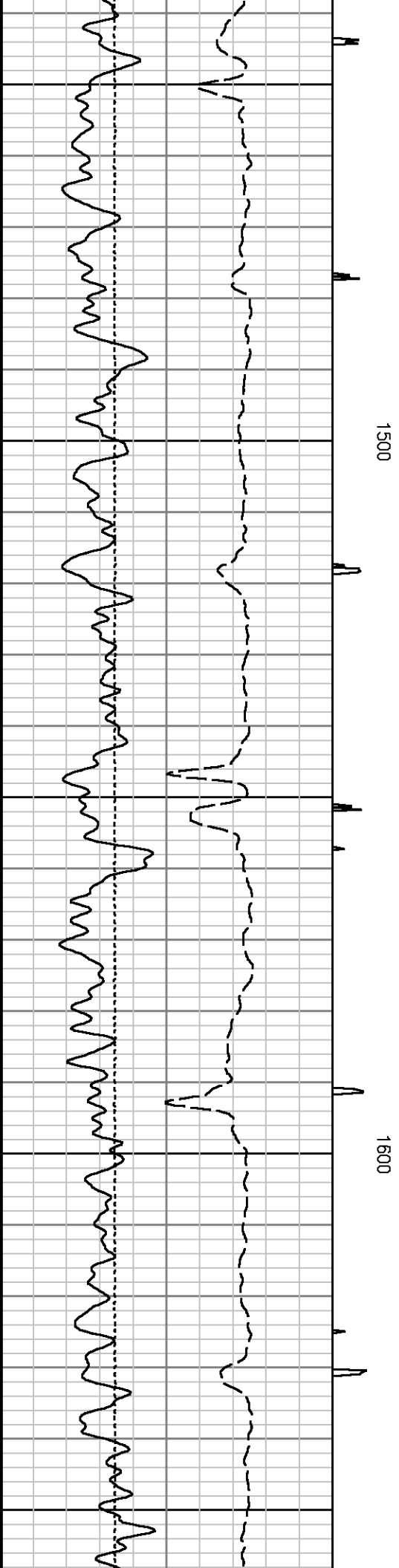
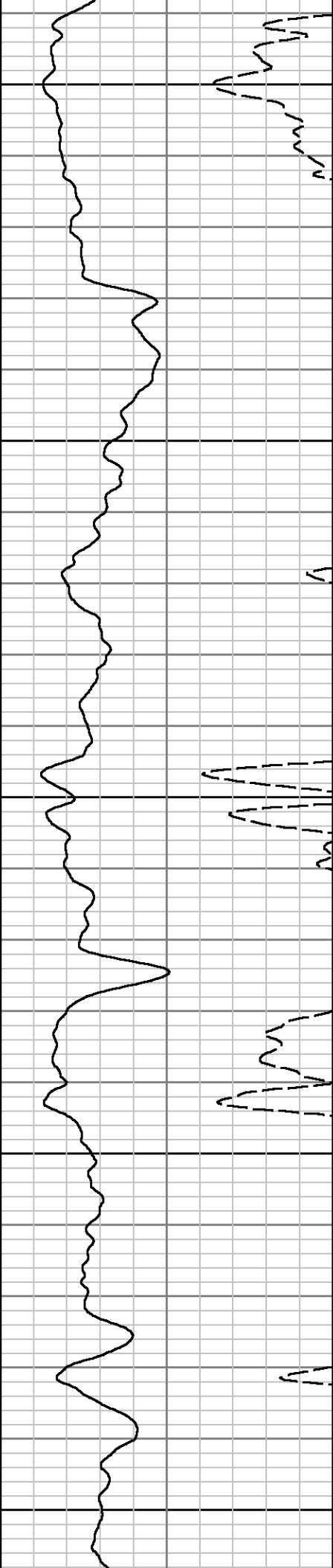
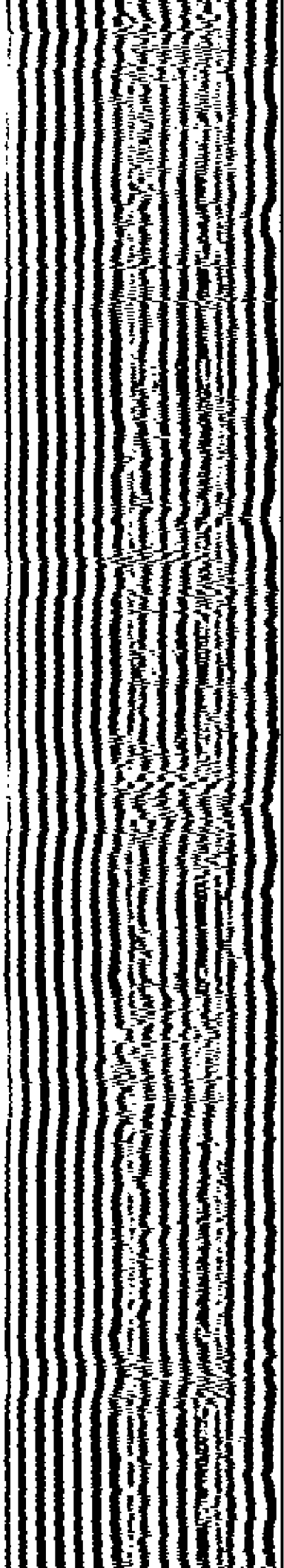


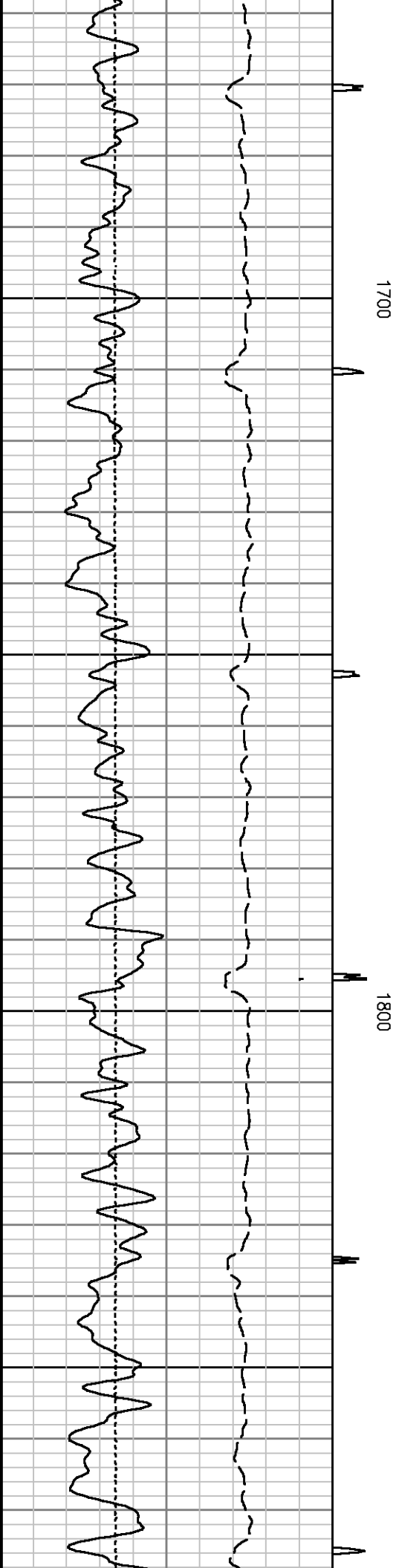
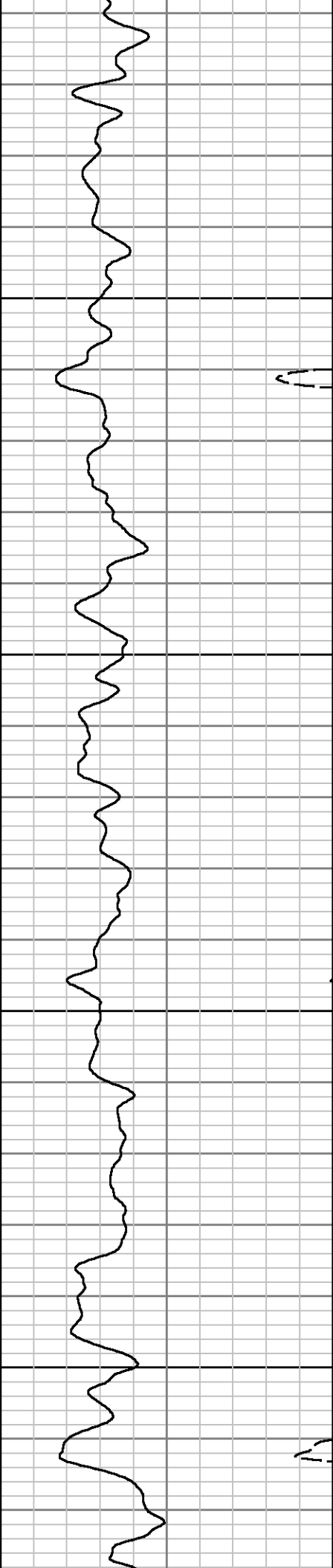
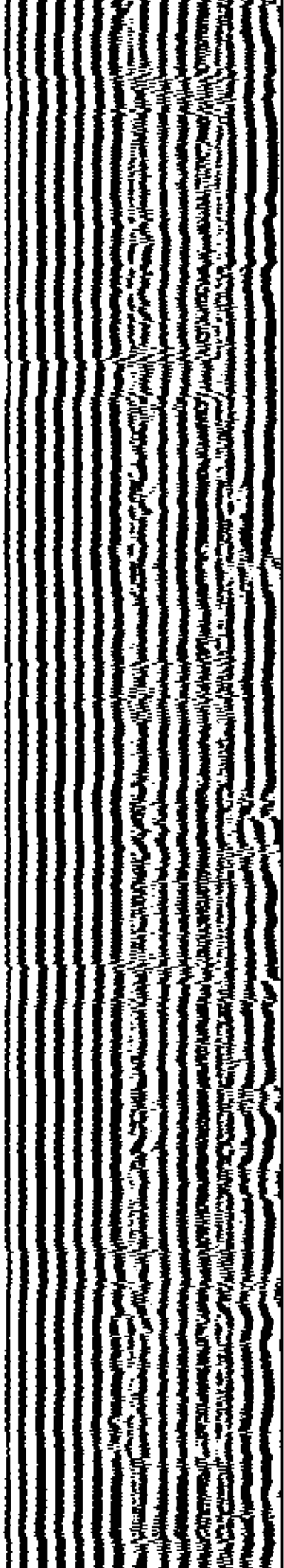


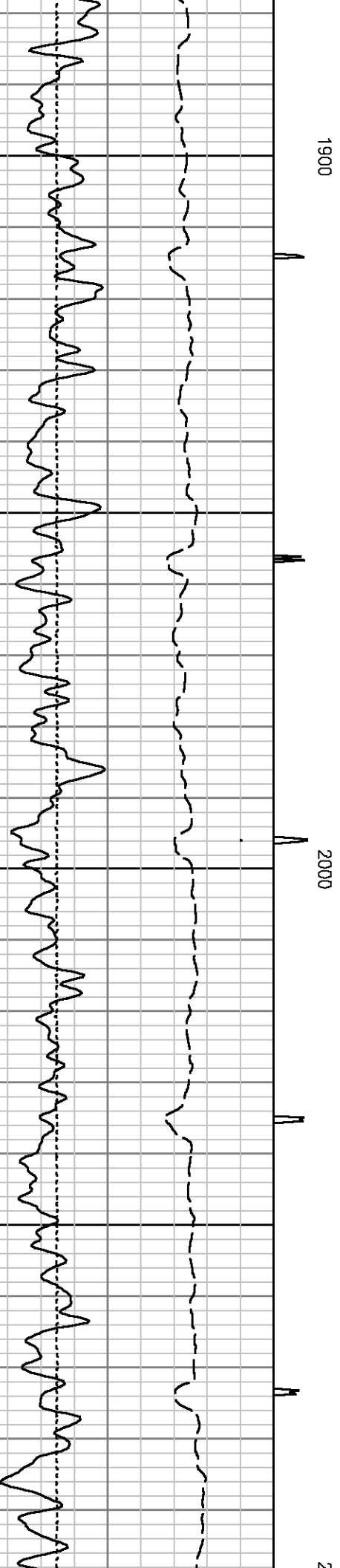
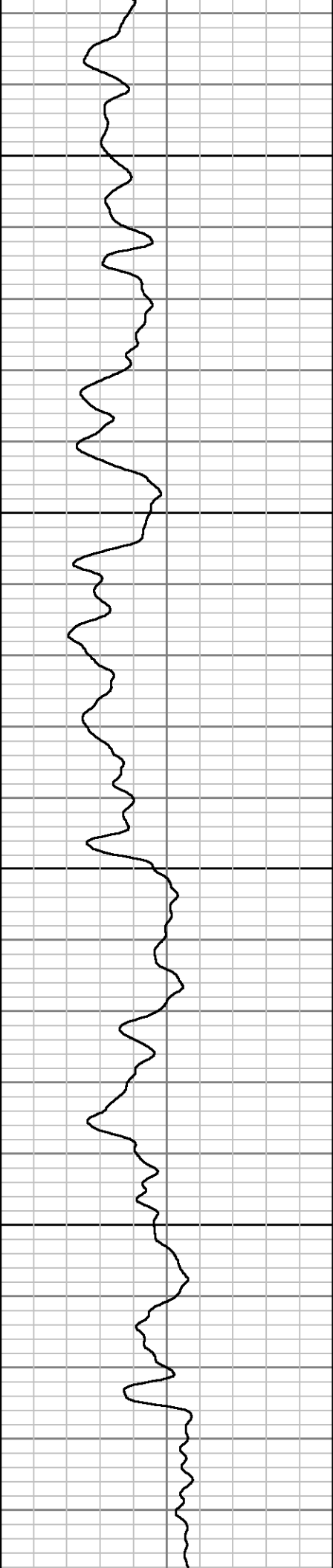
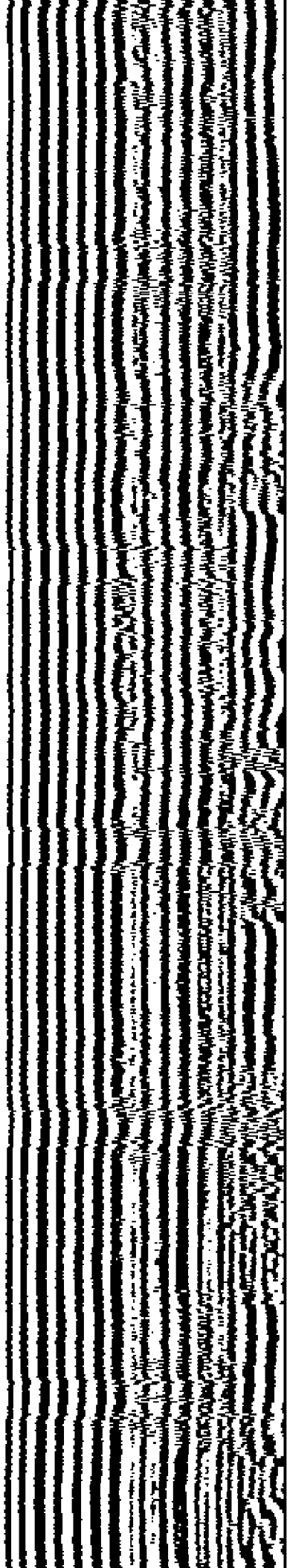


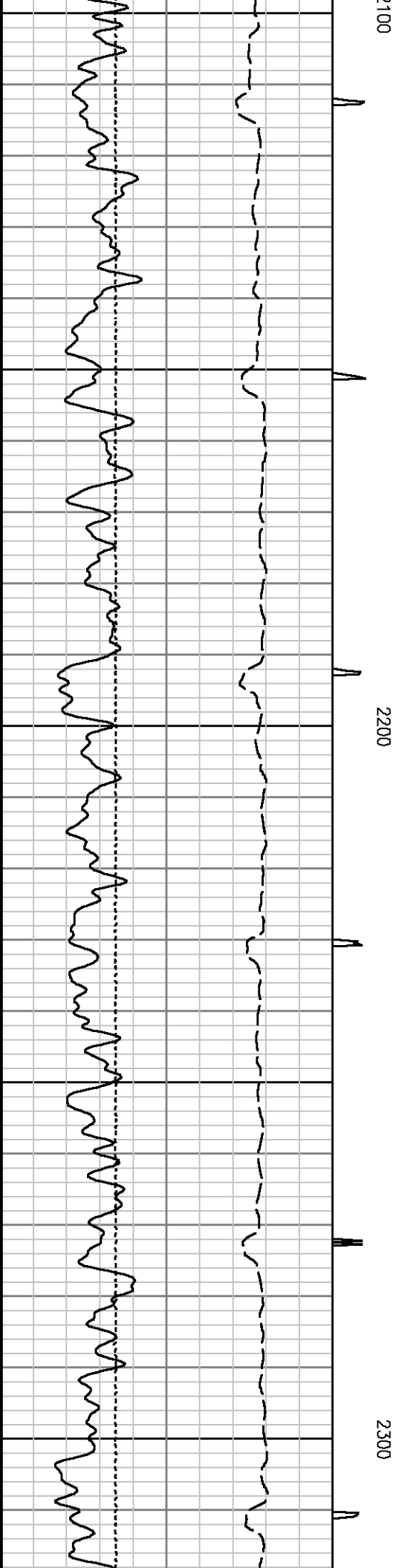
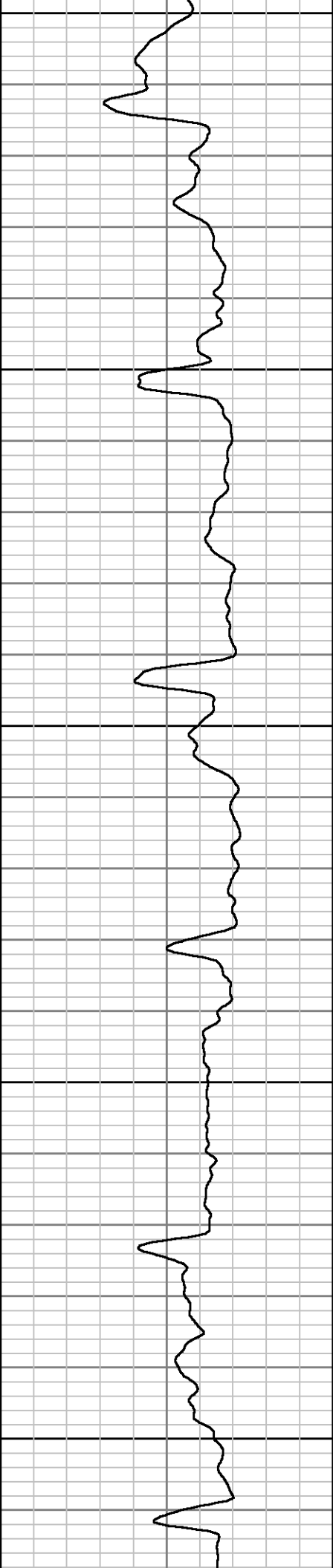
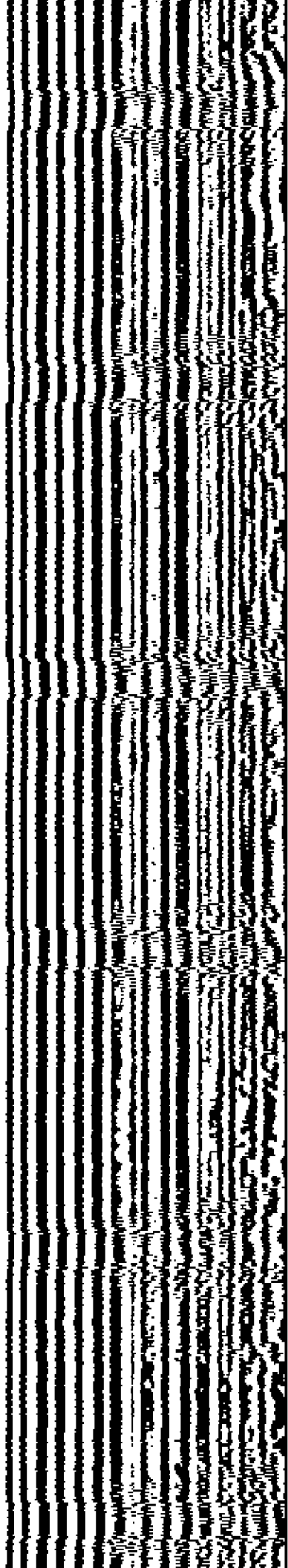


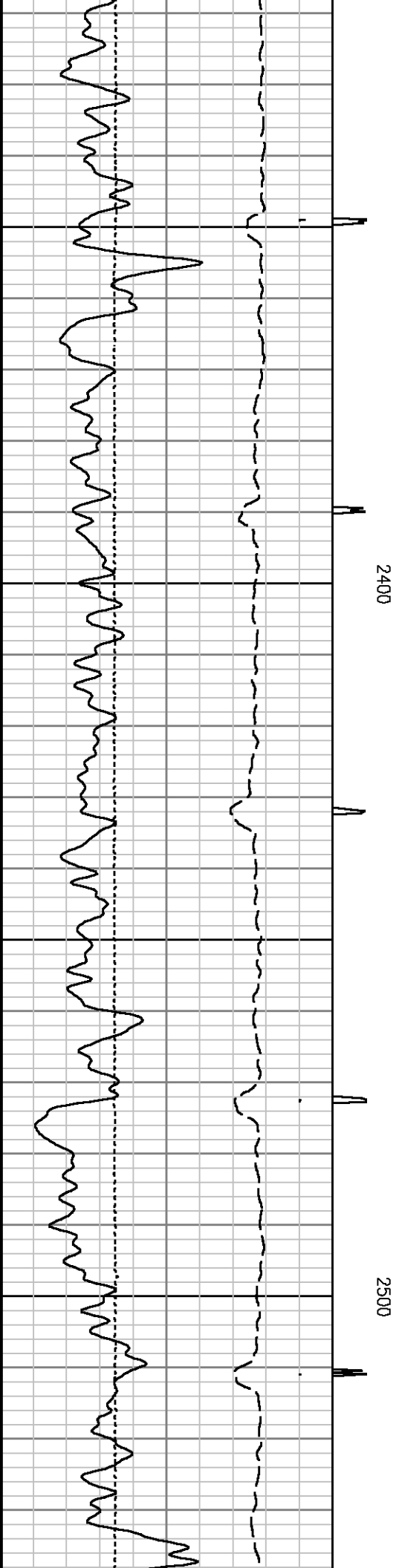
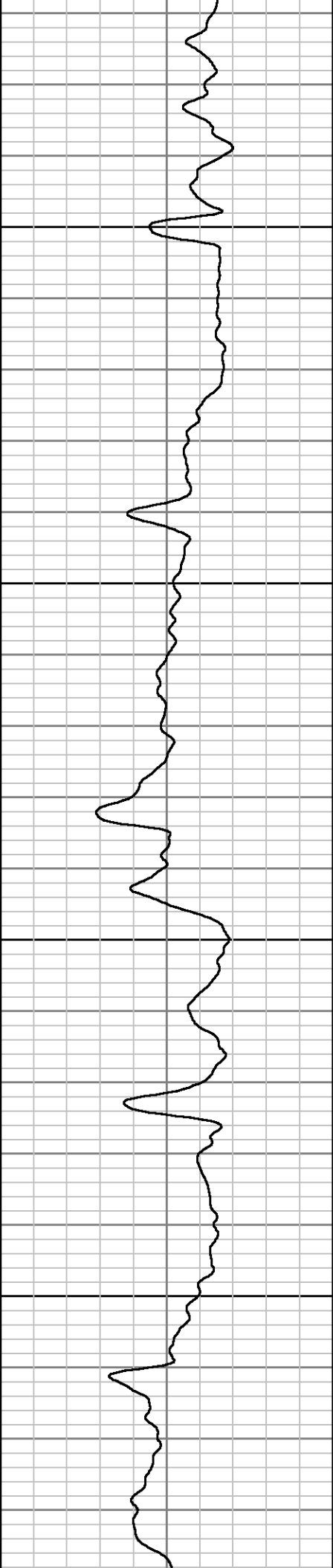
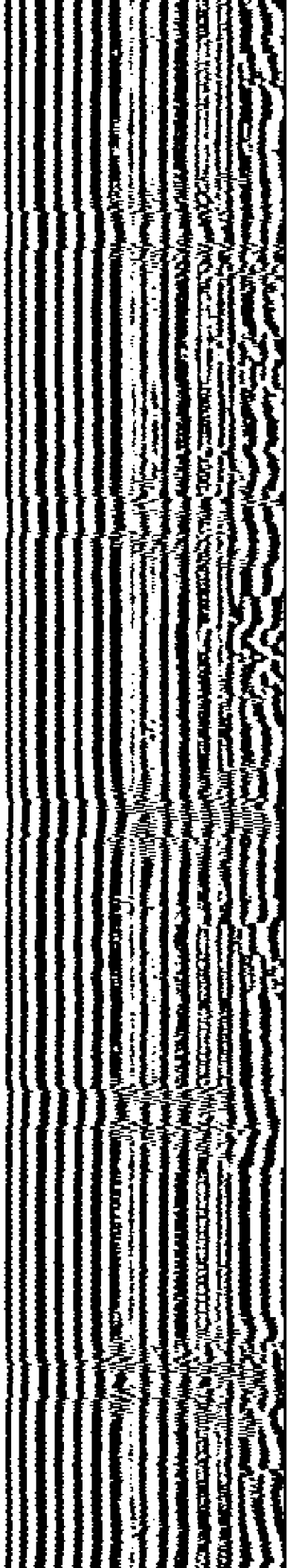


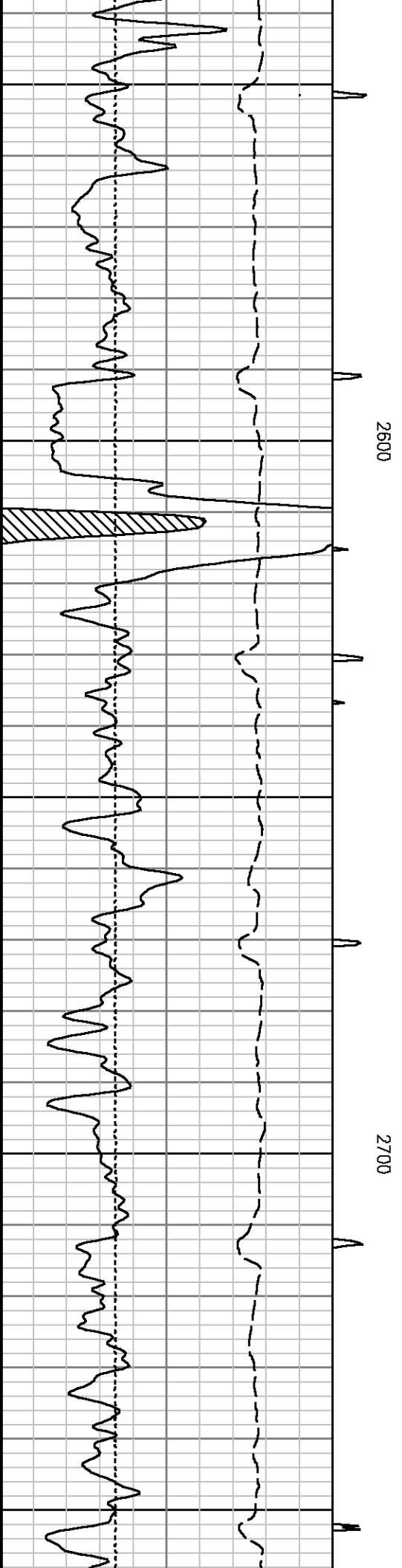
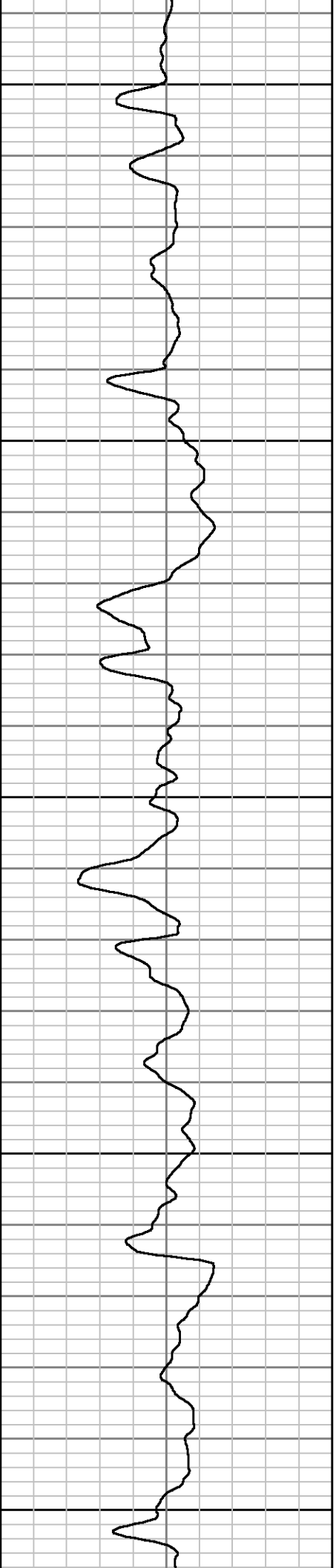
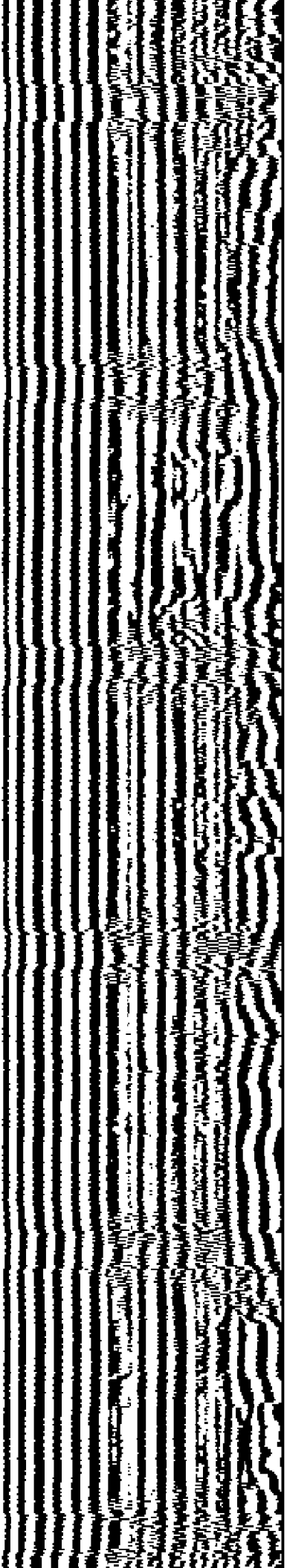


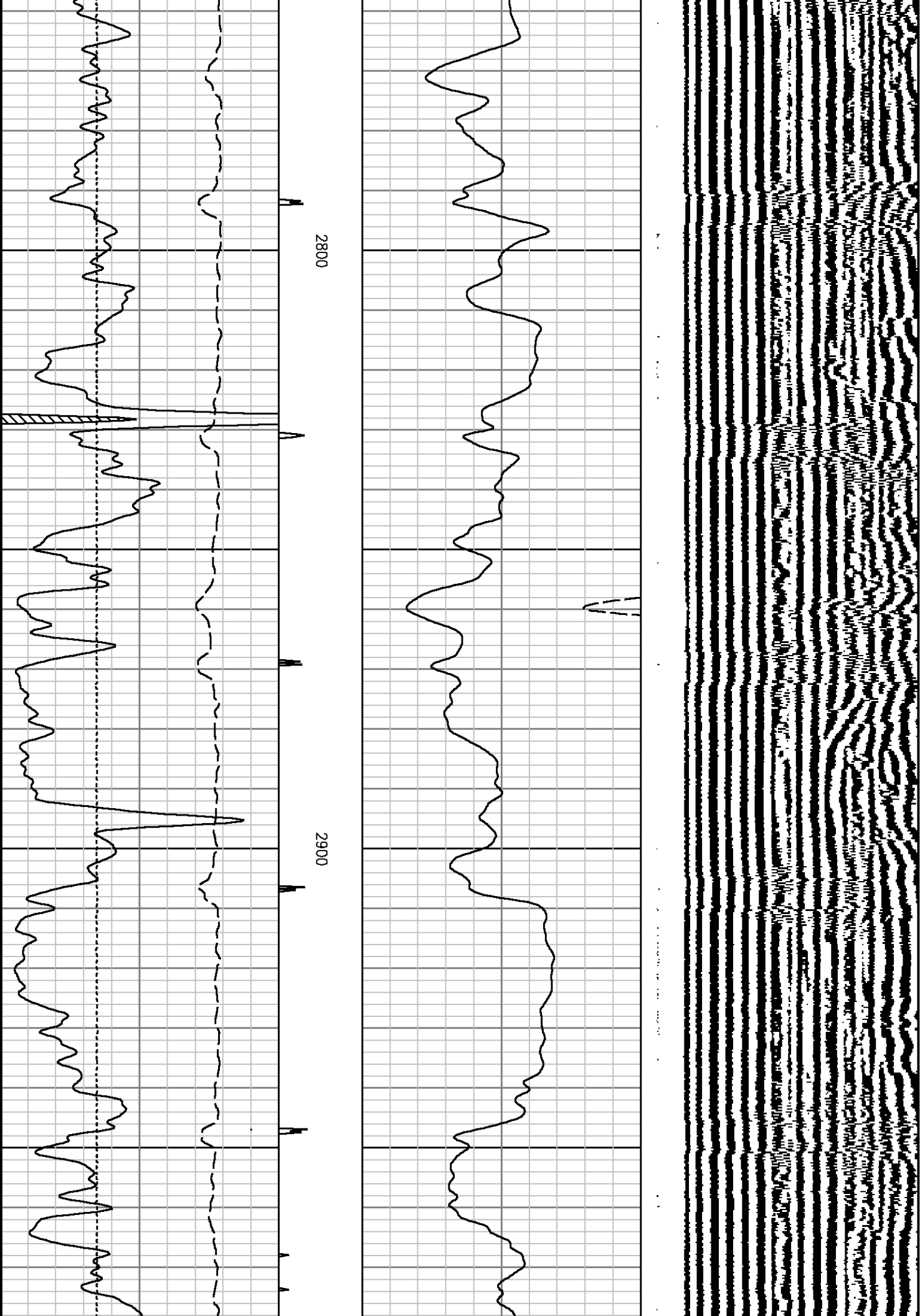




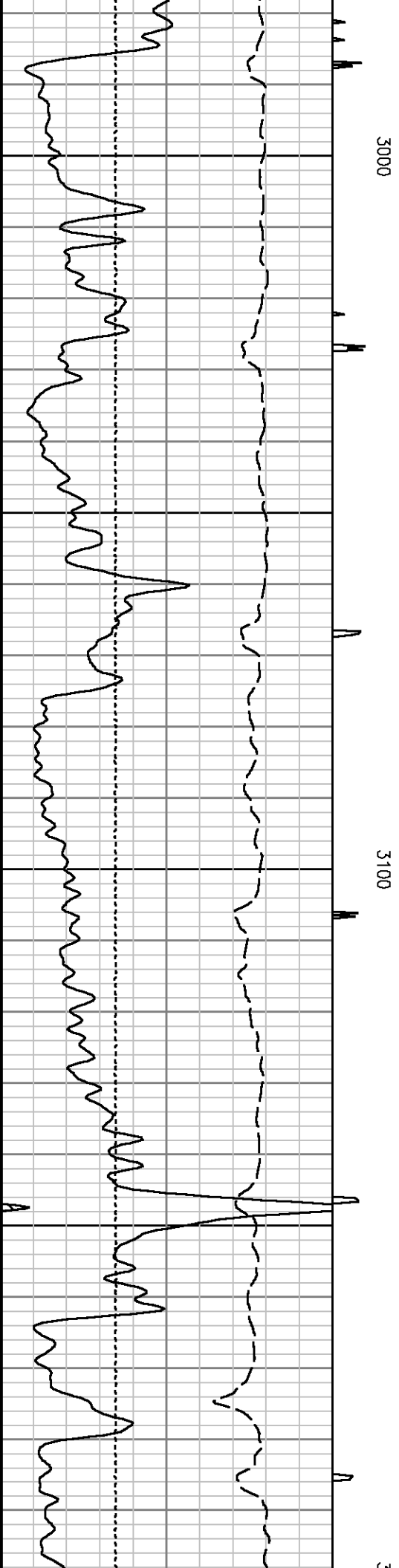
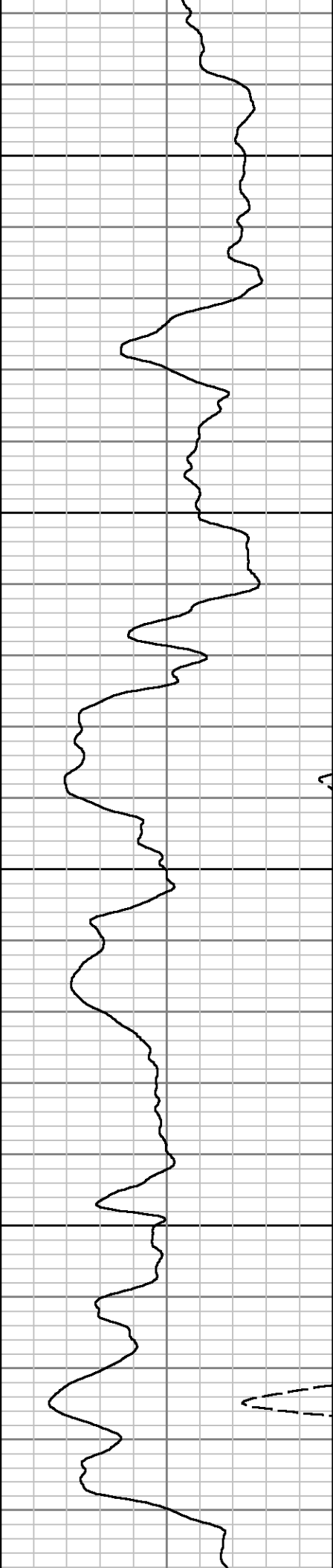
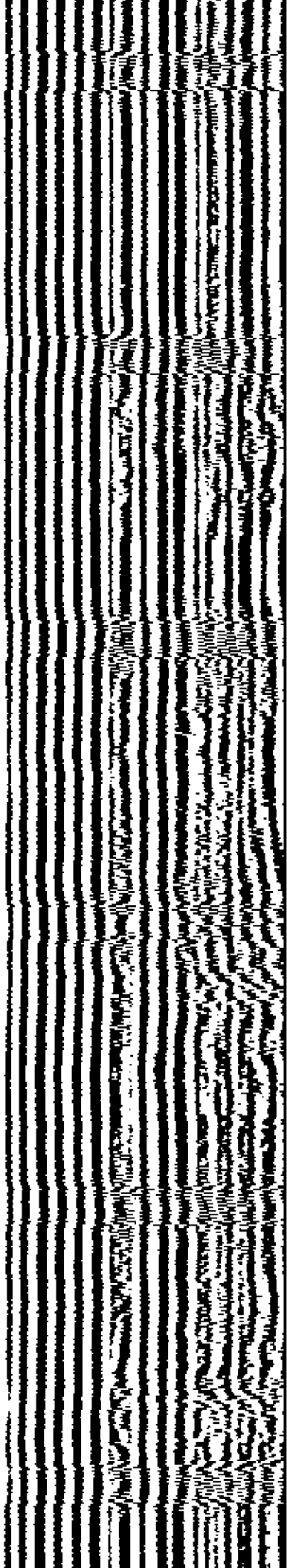


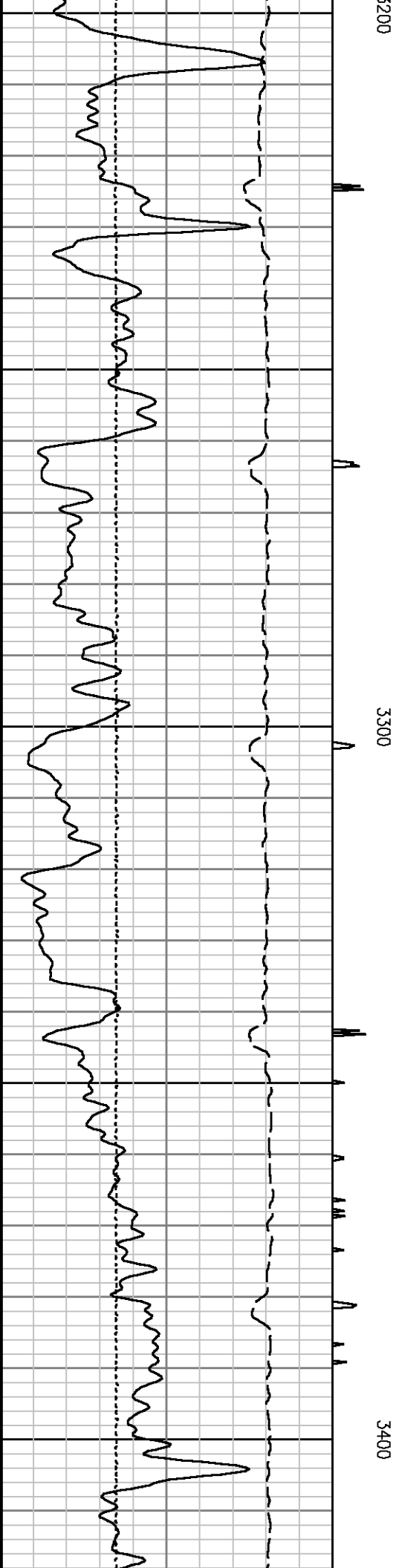
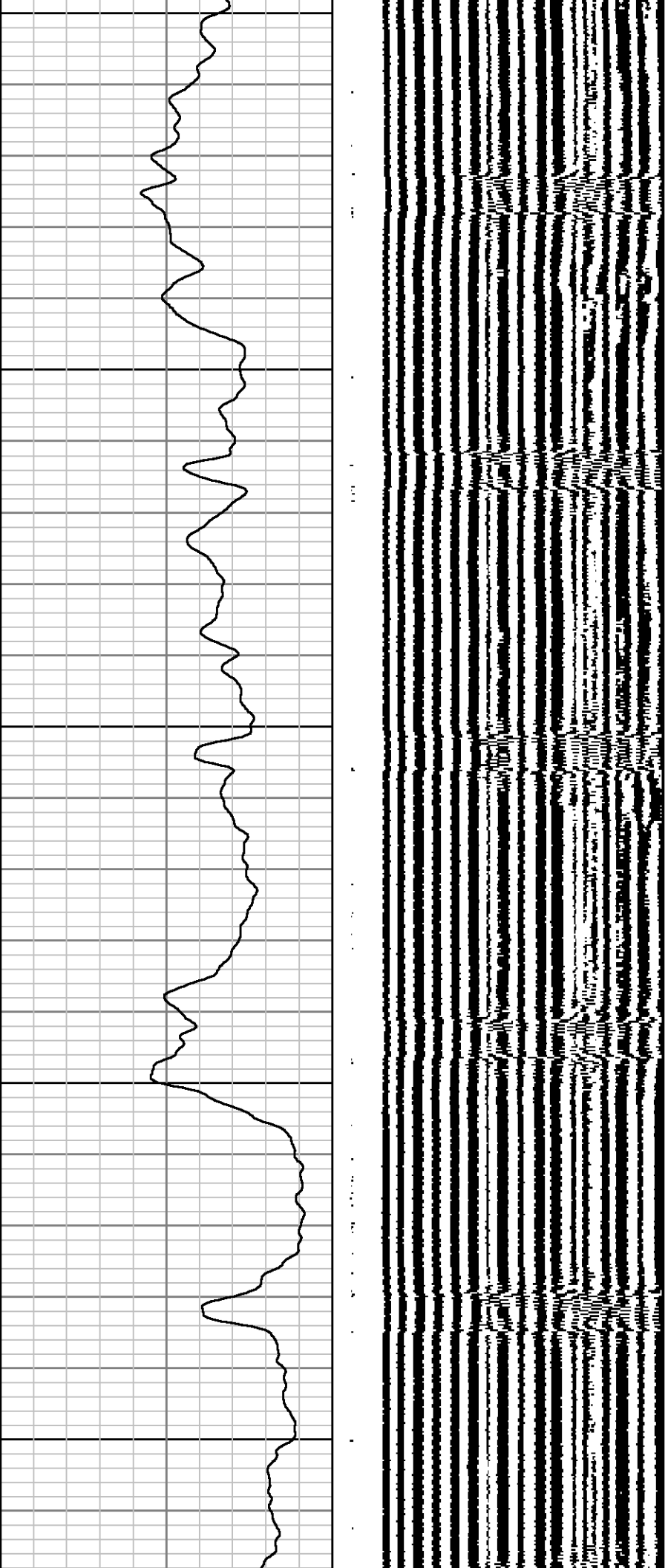


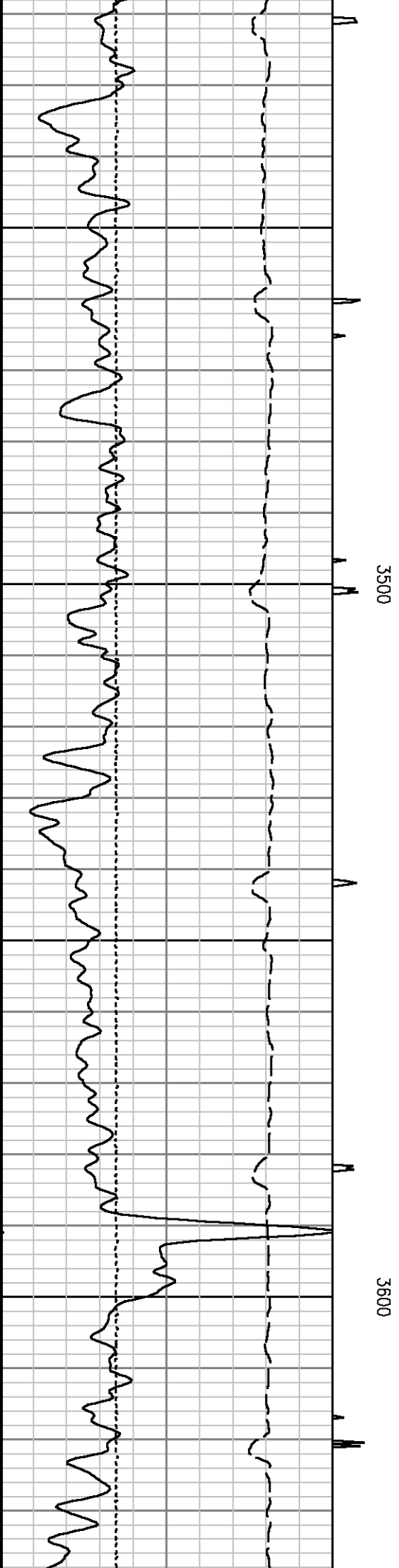
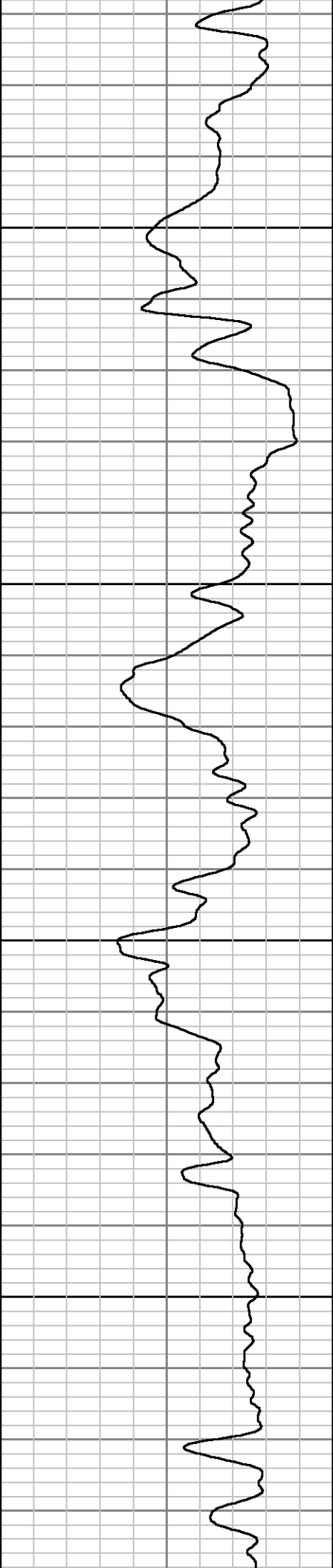
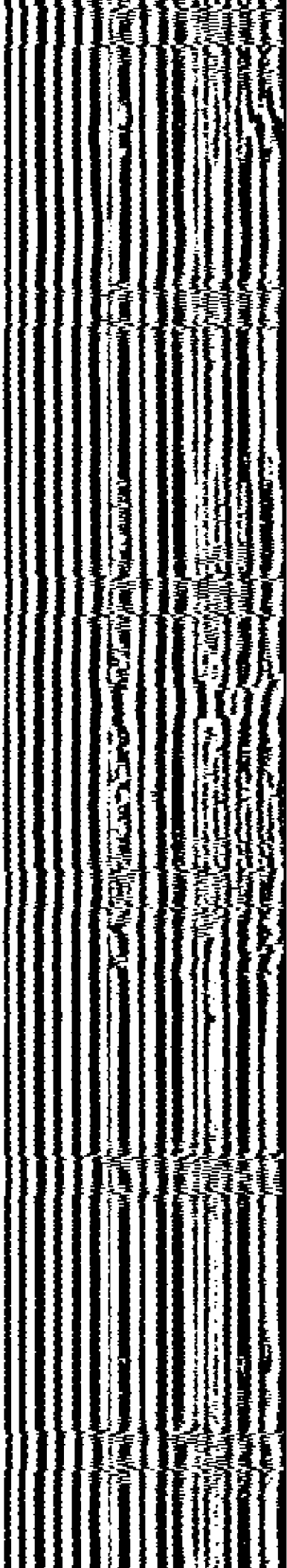


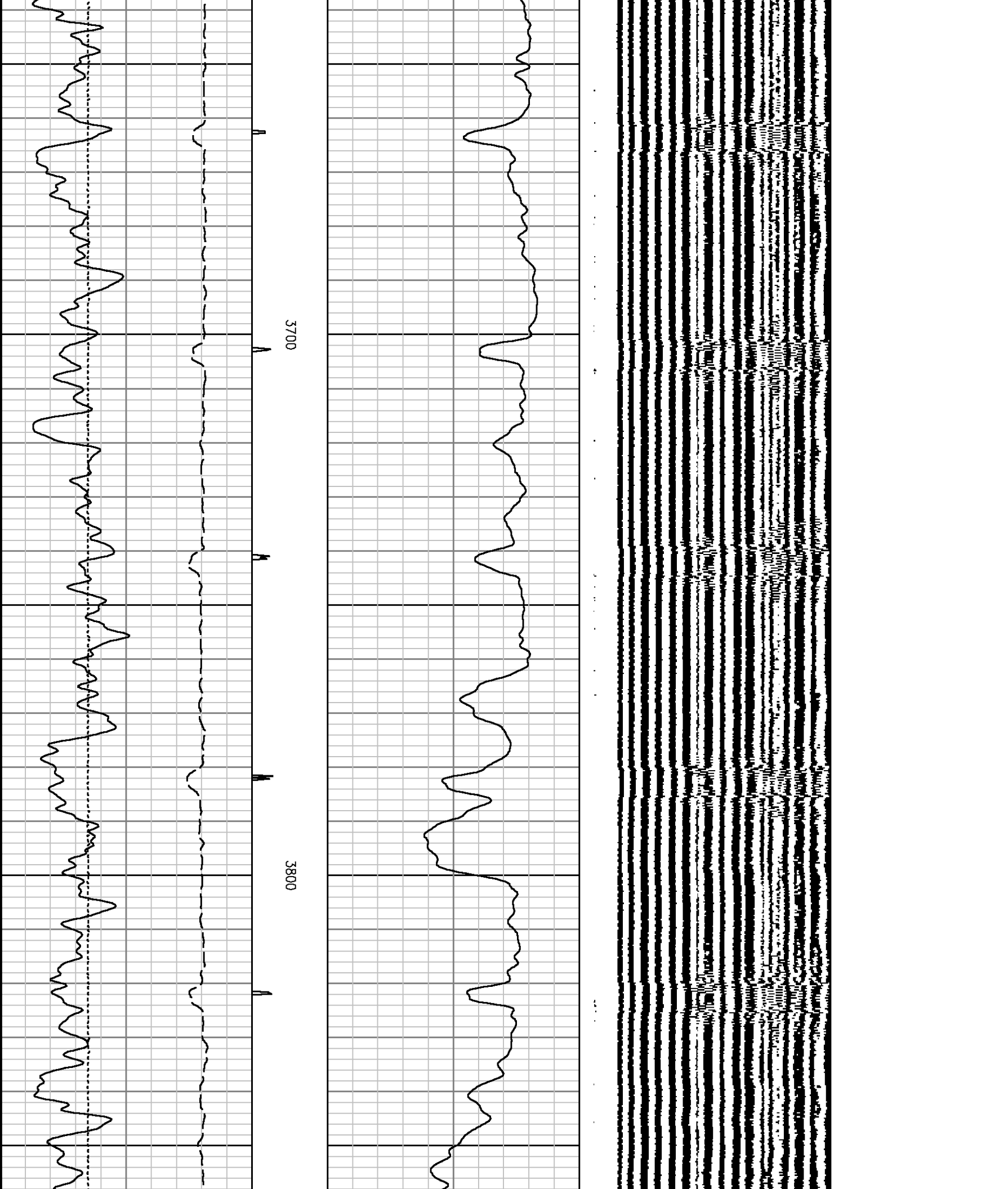


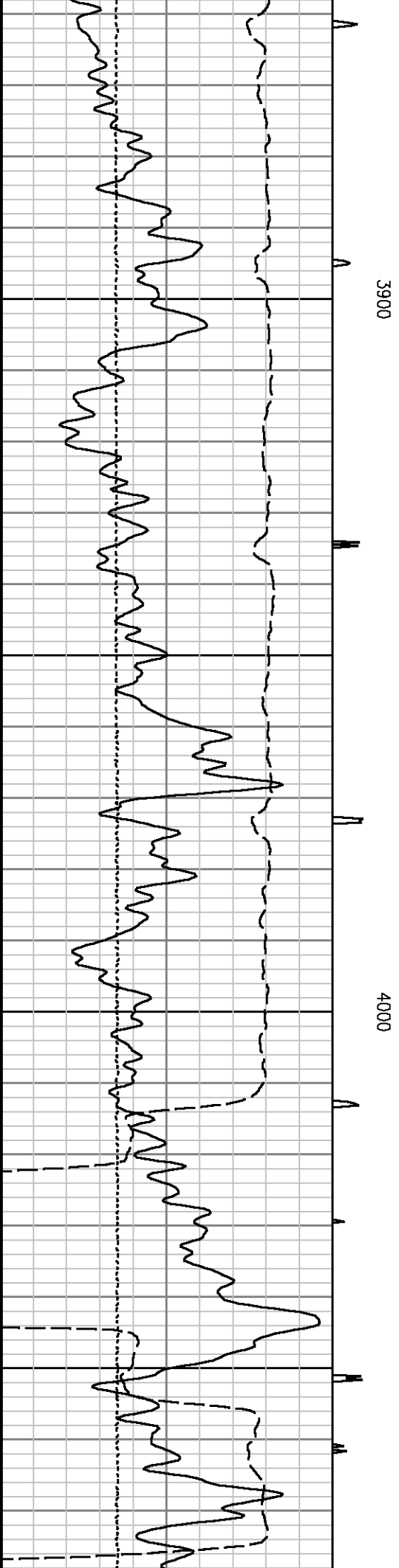
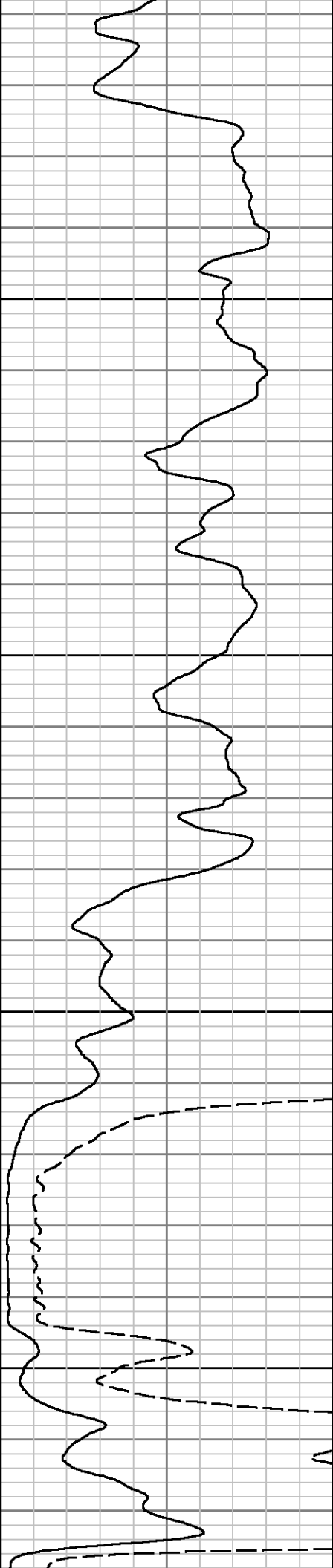
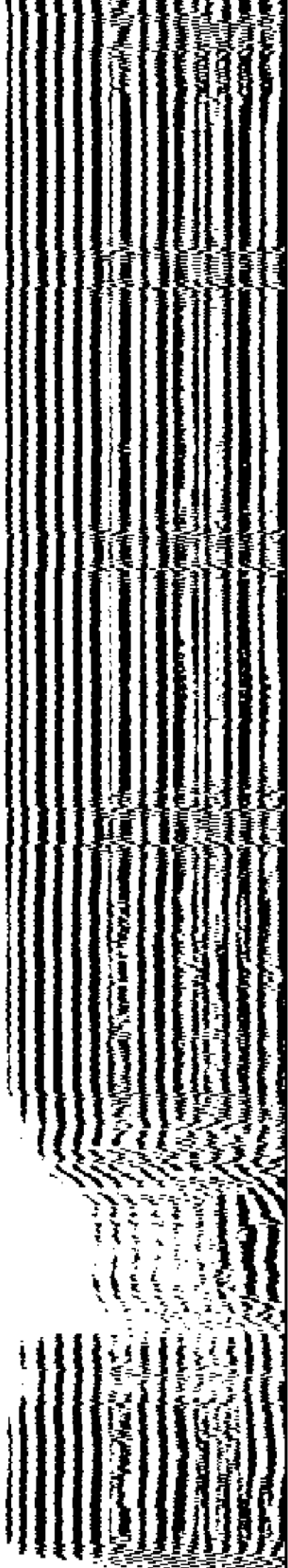


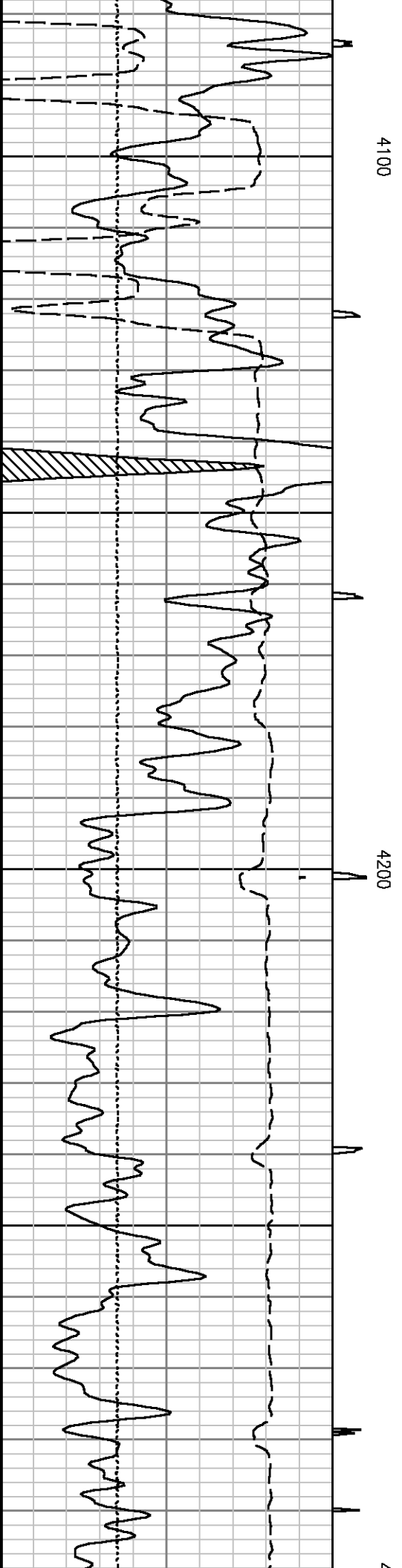
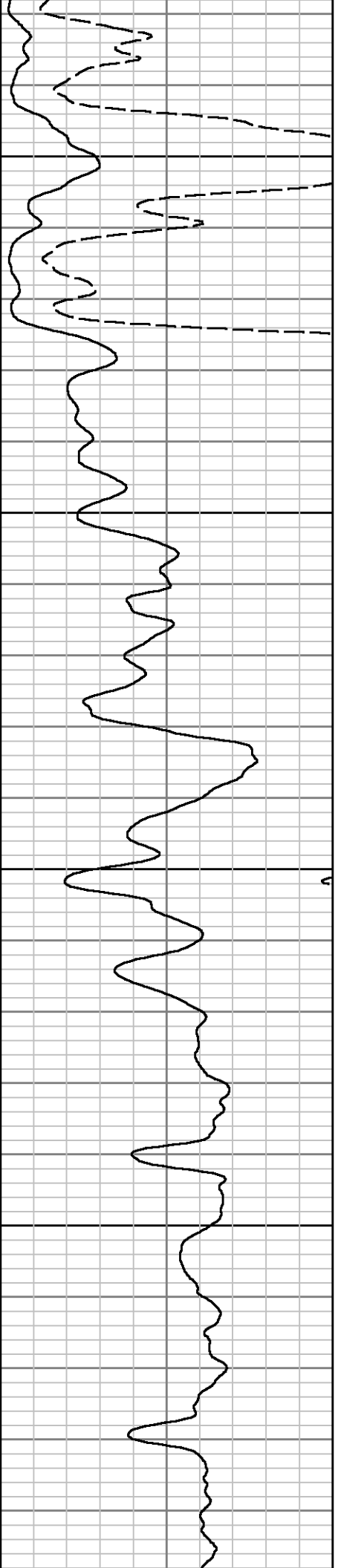
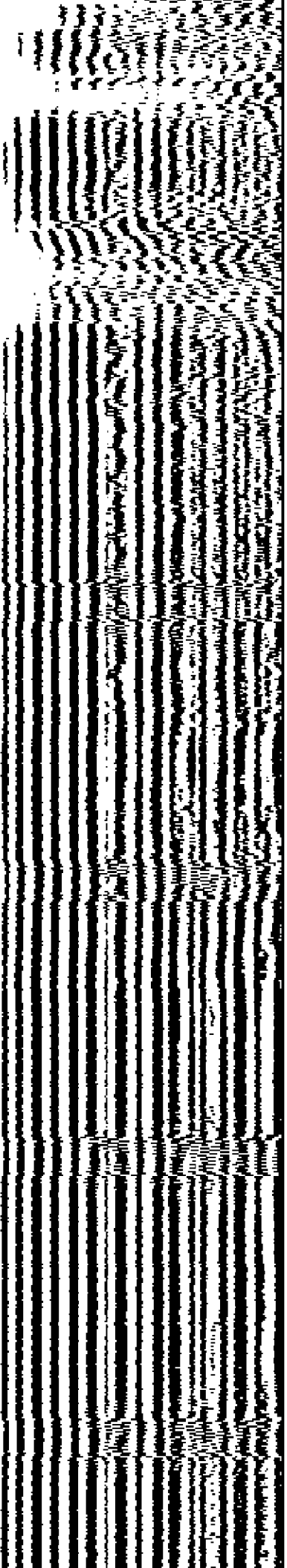


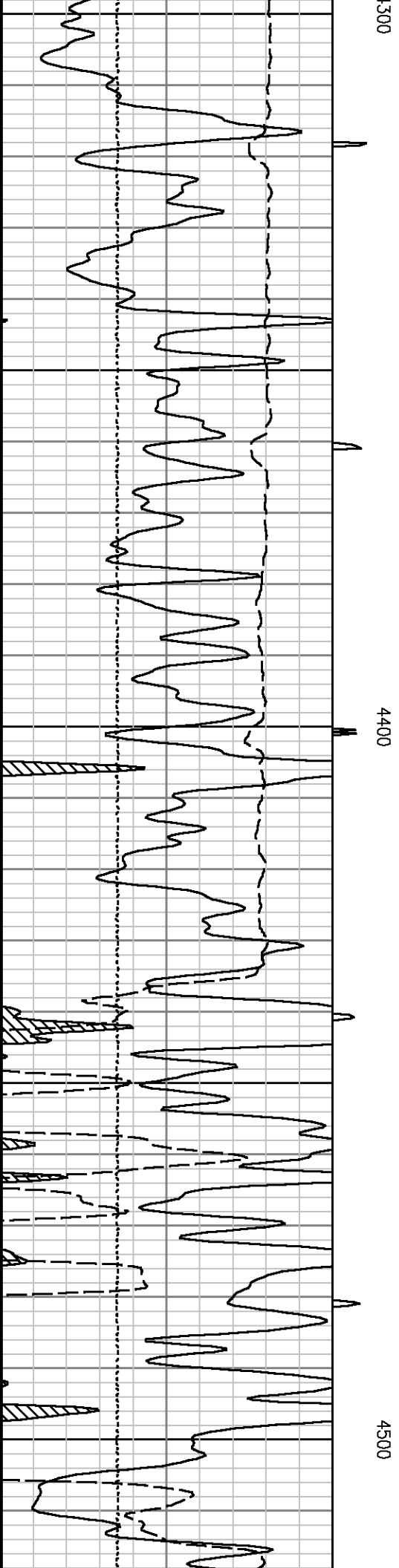
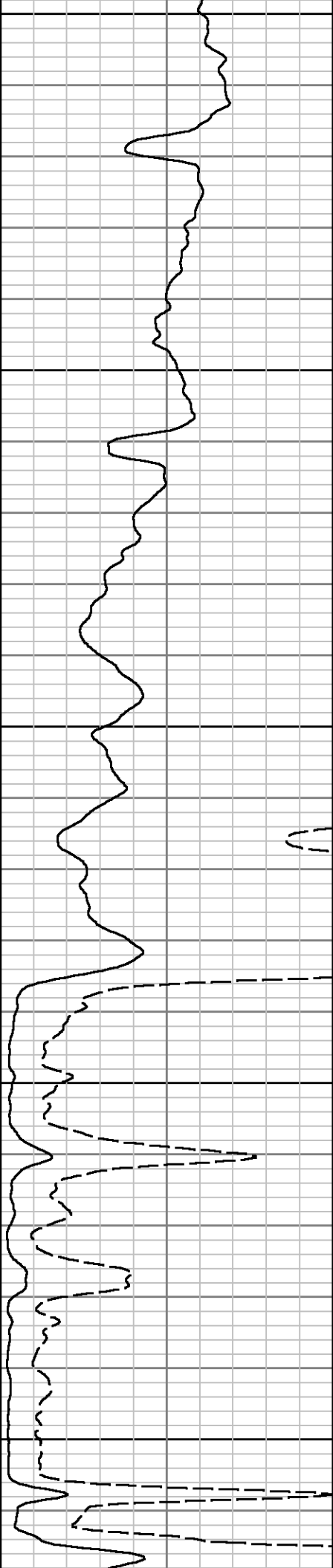
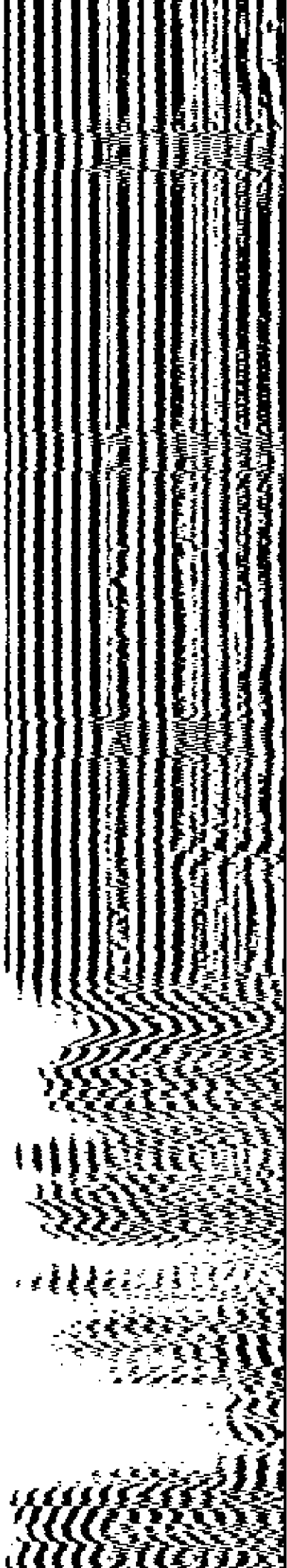


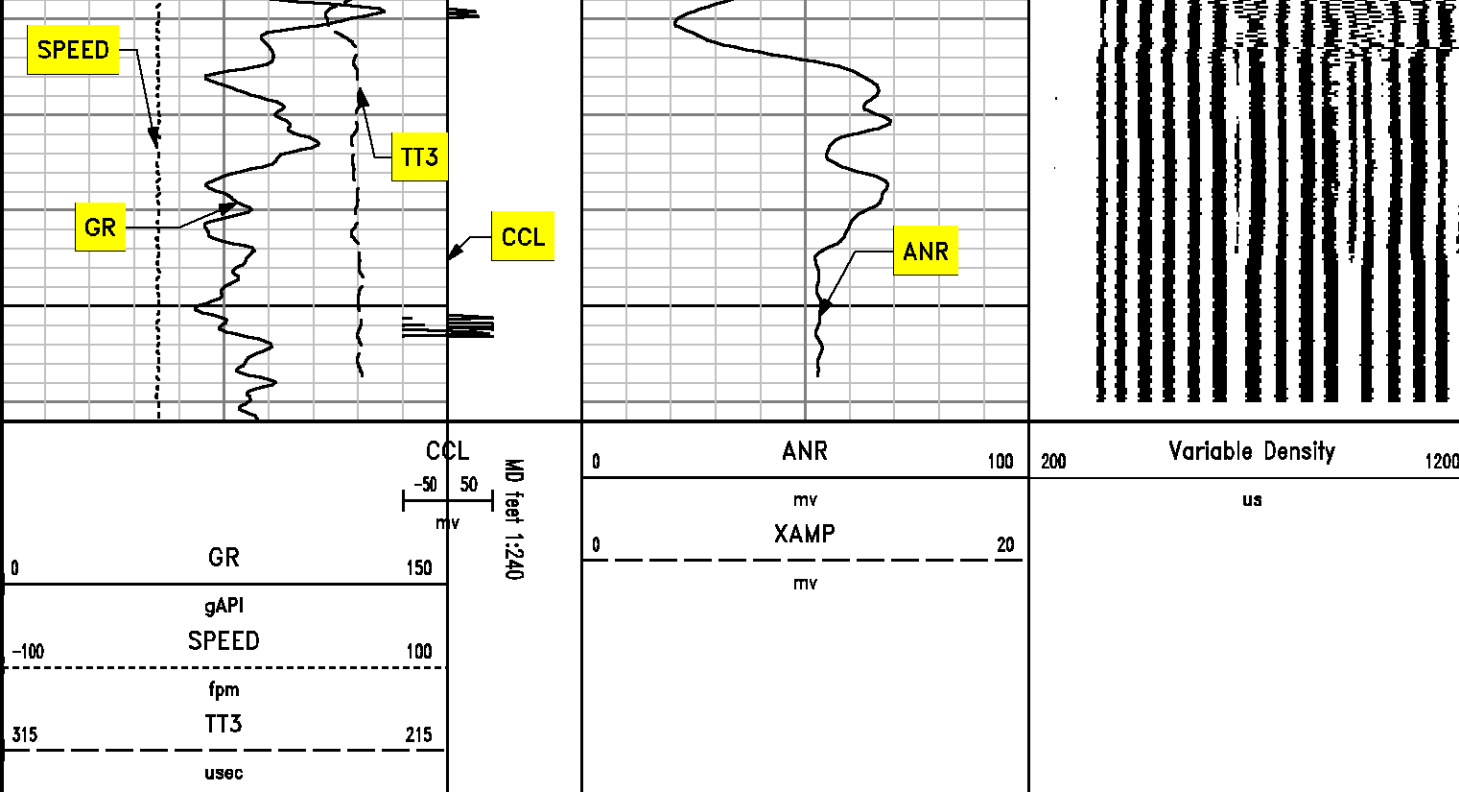












*REPEAT SECTION  
RECORDED AT 0 PSI*

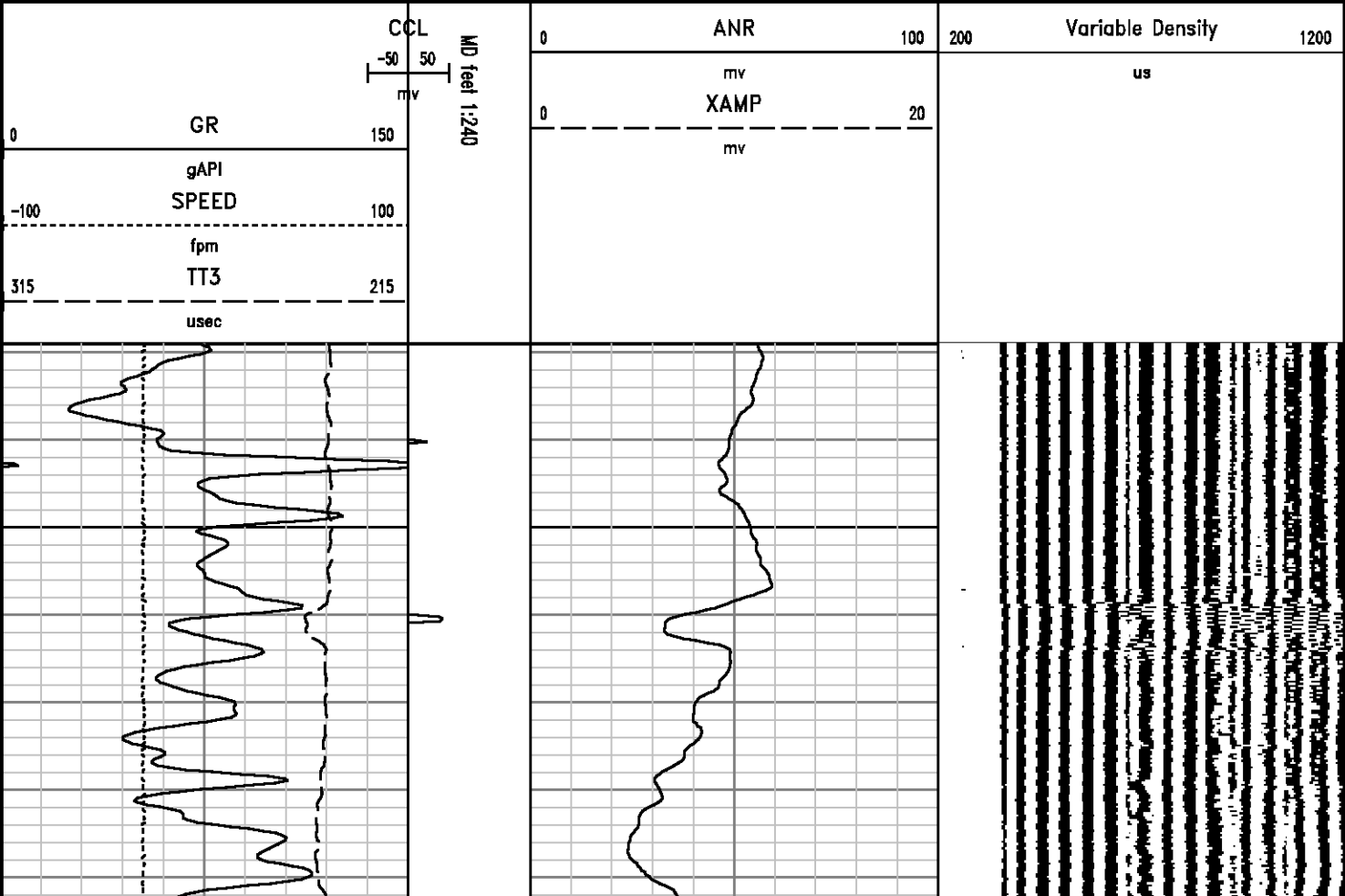
MEASUREMENT TYPE	PARAMETER	VALUE	UNITS	TOP	BOTTOM
RAL	Amp Gate Start Far	341.065	usec	4328.988	4579.000
RAL	Amp Gate Start Near	227.065	usec	4328.988	4579.000
RAL	Amp Gate Start Radial	227.065	usec	4328.988	4579.000
RAL	Amp Gate Width Far	30.000	usec	4328.988	4579.000
RAL	Amp Gate Width Near	30.000	usec	4328.988	4579.000
RAL	Amp Gate Width Radial	30.000	usec	4328.988	4579.000
RAL	casing od	5.500	inches	4328.988	4579.000
RAL	casing wt	14.000	lbm/ft	4328.988	4579.000
RAL	FB Start Far	328.592	usec	4328.988	4579.000
RAL	FB Start Near	216.266	usec	4328.988	4579.000
RAL	FB Start Radial	212.780	usec	4328.988	4579.000
RAL	FB Thresh Far	15.000	mv	4328.988	4579.000
RAL	FB Thresh Near	15.000	mv	4328.988	4579.000
RAL	FB Thresh Radial	15.000	mv	4328.988	4579.000
RAL	Fluid Travel Time	200.000	usec/ft	4328.988	4578.988

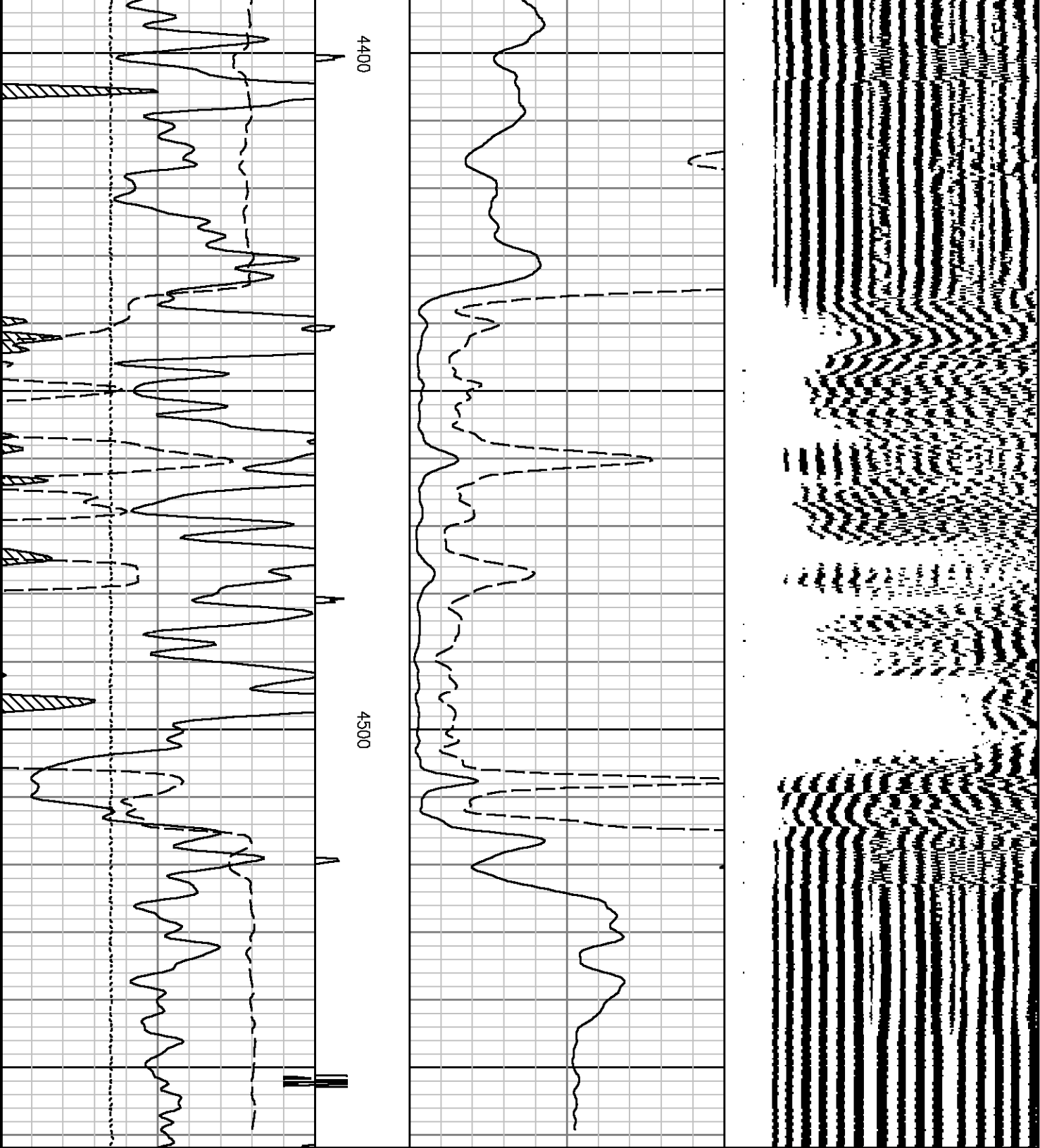


DEPTH OFFSETS  
(for Acquired Curves)

SERIES	DEPTH OFFSET	ACQUIRED CURVES							
1426XA	-17.580	ACAL	ANR	AR1	AR2	AR3	AR4		
		AR5	AR6	AR7	AR8	CHV	FPR2		
		FPR3	FPR5	TT3	TTR1	TTR2	TTR3		
		TTR4	TTR5	TTR6	TTR7	TTR8	XAMP		
1426XA	-16.580	AFAR	SIG	TT5					
2460XA	-7.710	CCL							
2460XA	-5.420	GR							
2460XA	0.000	NEU							

Created by : RAL, v4.8.008  
Plotted by : PlotMgr, v5.4.504  
Company : COLORADO INTERSTATE GAS  
Well : FLANK #10  
File Name : c:\welldata\cb1562\repeat.xtf  
Mode : PlotMgr 5.4.504  
Interval : 4329.00 - 4562.00 feet UP  
Created : 1/29/2011 8:48:46 AM





		CCL	0	ANR	100	200	Variable Density	1200
		-50 50		mv		us		
		mv						
0	GR	150	0	XAMP	20			
			mv					

# CALIBRATION SUMMARY

## GAMMA RAY

Calibration File: C:\case\calver\GR\1037642161.cal

### CALIBRATION SUMMARY

DATE/TIME PERFORMED: Fri Jan 28 13:28:24 2011 TOOL SERIES: 2460XA ASSET: 10376421 SEQ: 61

Calibrator #	Background [cps]	Calibrator On [cps]	Multiplicative	Background [api]	Calibrator On [api]	Differential [api]
S2K I-352N	40.62	151.33	1.355	55.03	205.03	150.00

Verification File: C:\case\calver\GR\1037642161.VP

### PRIMARY LOG VERIFICATION

DATE/TIME PERFORMED: Fri Jan 28 13:29:47 2011 TOOL SERIES: 2460XA ASSET: 10376421 SEQ: 61

Calibrator #	Background [cps]	Calibrator On [cps]	Multiplicative	Background [api]	Calibrator On [api]	Differential [api]
S2K I-352N	40.80	151.78	1.355	55.28	205.63	150.36

## RALSHP

Shop Calibration: C:\case\calver\RALSHP\1037623862\_shp.cal

### SHOP CALIBRATION SUMMARY

DATE/TIME PERFORMED: Sat Jan 29 07:53:43 2011 TOOL SERIES: 1426XA ASSET: 10376238 SEQ: 62

Tool Delay [usec]	-50.00	Tank OD In	5.50	Tank Wt lbm/ft	15.50	Tank ID In	4.95
----------------------	--------	---------------	------	-------------------	-------	---------------	------

RECEIVER	Travel Time [usec]	Amp. Gate Start [usec]	Amp. Gate Width [usec]	Zero Gate Start [usec]	Zero Gate Width [usec]	Zero Amp. [mV]	Amp Ref. [mV]	Shop Factor
CAL Pulse	212	181	30	139	25	0.367	100.00	1.02
3 Ft. Receiver	208	179	30	130	25	0.980	100.00	1.07
5 Ft. Receiver	334	285	30	243	25	0.922	150.00	1.31
Radial #1	219	177	30	126	25	1.603	100.00	1.05
Radial #2	216	177	30	126	25	2.407	100.00	1.06
Radial #3	217	177	30	126	25	3.263	100.00	1.08
Radial #4	215	177	30	126	25	1.697	100.00	1.09
Radial #5	212	177	30	126	25	-0.205	100.00	1.07
Radial #6	212	177	30	126	25	-1.477	100.00	1.05
Radial #7	217	177	30	126	25	-0.535	100.00	1.05
Radial #8	208	177	30	126	25	0.025	100.00	1.04

# RALFLD

Wellsite Calibration: C:\case\calver\RALFLD\1037623862 fld.cal

## WELLSITE CALIBRATION SUMMARY

DATE/TIME PERFORMED: Sat Jan 29 07:54:42 2011 TOOL SERIES: 1426XA ASSET: 10376238 SEQ: 62

Tool Delay [usec] -50.00 Casing OD in 5.50 Casing Wt lbm/ft 15.50 Casing ID in 4.95

RECEIVER	Zero Gate Start [usec]	Zero Gate Width [usec]	Zero Amp. [mV]	Full Amp. [mV]	Wellsite Factor	Amp. Ref [mV]
CAL Pulse	139	25	-0.068	0.000	1.00	100.000
3 Ft. Receiver	226	30	-1.412			
5 Ft. Receiver	340	30	3.608			
Radial #1	226	30	-0.524			
Radial #2	226	30	-2.509			
Radial #3	226	30	-1.278			
Radial #4	226	30	-4.910			
Radial #5	226	30	-3.364			
Radial #6	226	30	0.465			
Radial #7	226	30	3.558			
Radial #8	226	30	0.523			



Company COLORADO INTERSTATE GAS  
Well FLANK #10  
Field FLANK  
County BACA State COLORADO

File No: 551562  
API No: 05-009-05055

Location

Elevations

KB N/A  
DF N/A  
GL 3751 ft

SEC 8 TWP 34S RGE 42W

CASE

Baker Atlas