

# **BILL BARRETT CORPORATION**

**WELD COUNTY, COLORADO**

**SEC 25 T5N R62W 6th P.M.**

**ANSCHUTZ STATE #5-62-25-0108XBH - Slot AS**

**5-62-25-0108XBH**

**27 December, 2013**

**Survey: FINAL SURVEYS**





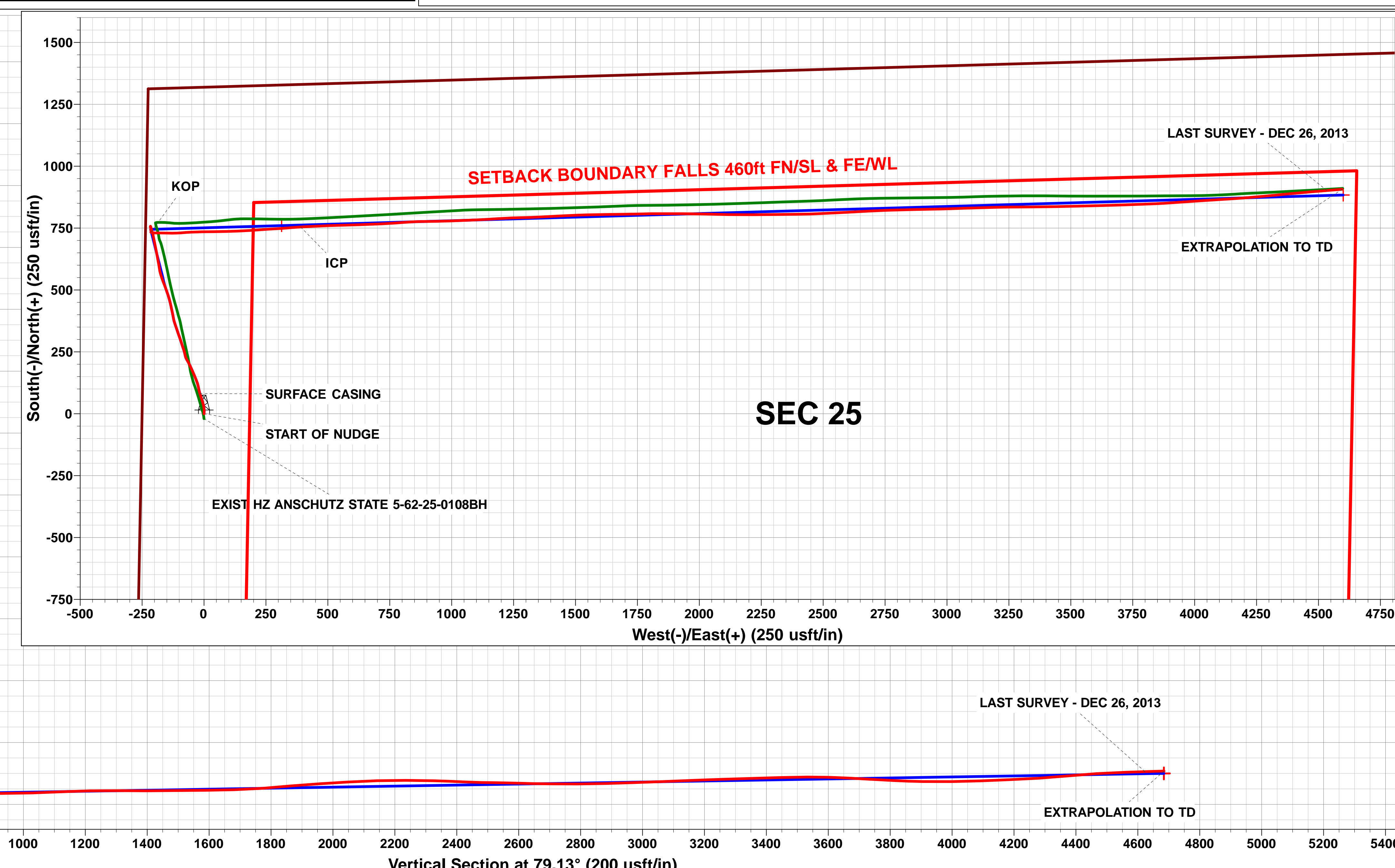
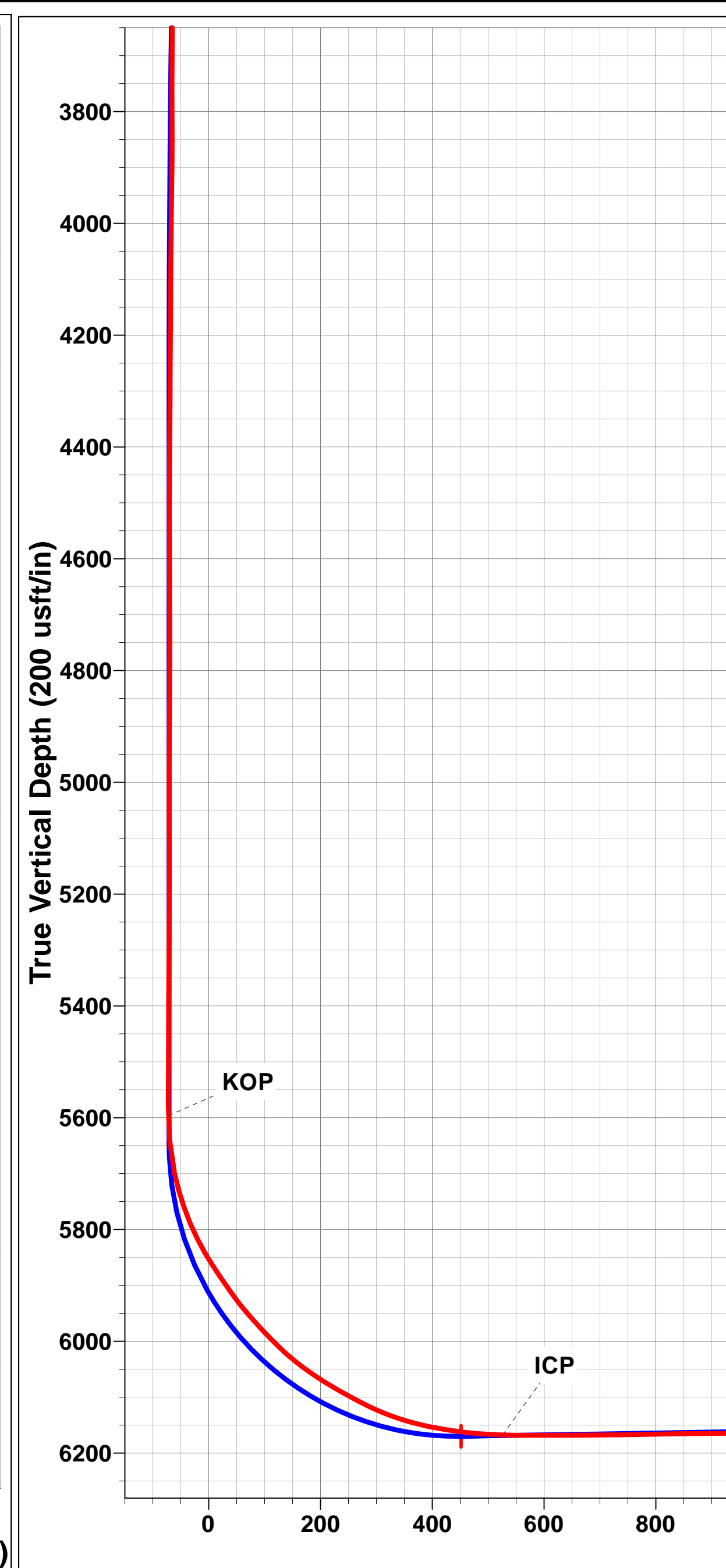
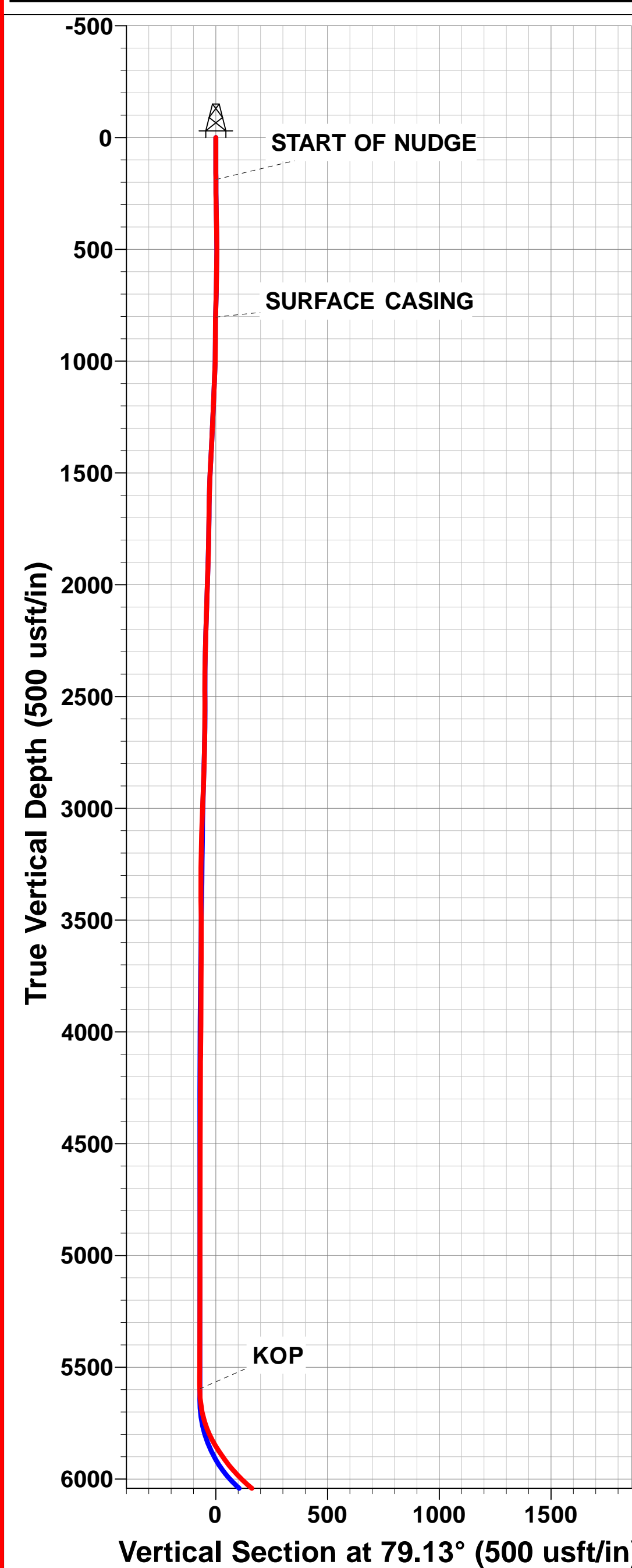
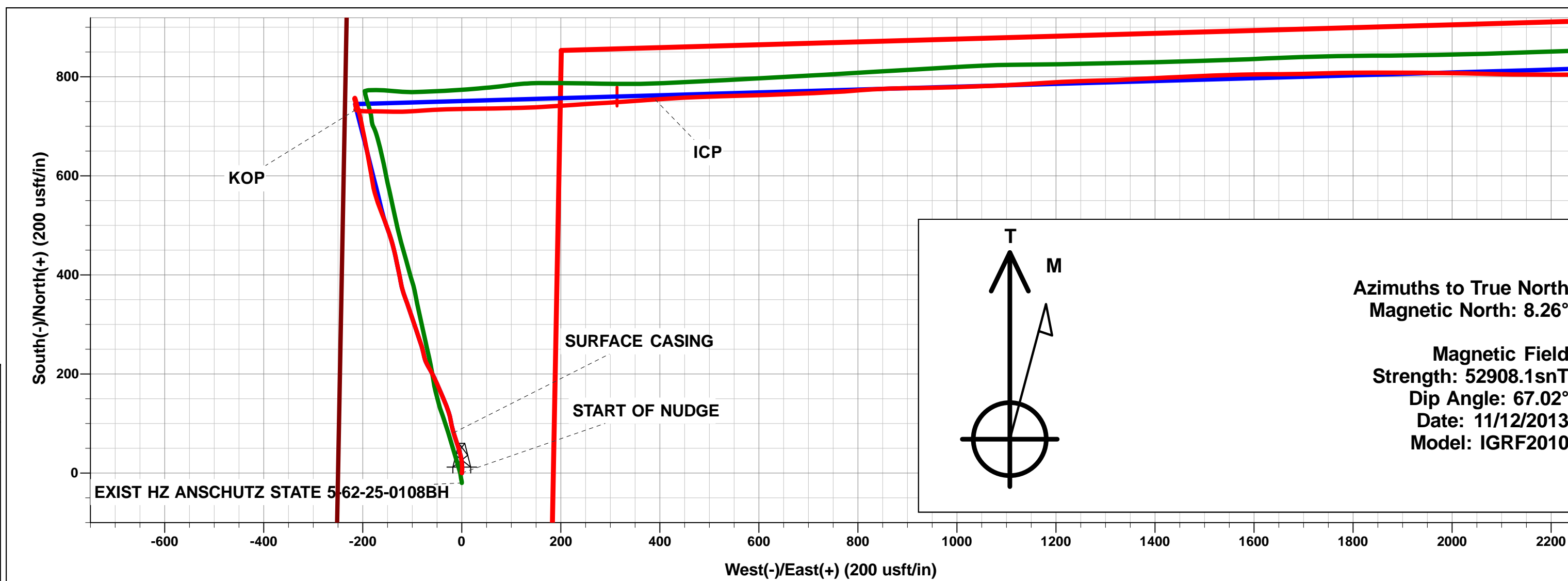
Project: WELD COUNTY, COLORADO  
Site: SEC 25 T5N R62W 6th P.M.  
Well: ANSCHUTZ STATE #5-62-25-0108XBH  
Wellbore: JOB # 2009-244  
Design: FINAL SURVEYS

#### ANNOTATIONS

TVD	MD	Inc	Azi	+N/-S	+E/-W	VSect	Departure	Annotation
188.0	188.0	1.59	2.58	0.5	0.5	0.6	1.3	START OF NUDGE
803.4	810.0	11.88	343.18	81.5	-16.3	-0.6	84.6	SURFACE CASING
5596.5	5678.0	1.64	117.78	733.3	-214.3	-72.1	820.0	KOP
6167.8	6595.0	88.13	86.18	754.3	390.5	525.8	1425.5	ICP
6094.3	10746.0	91.70	85.20	902.0	4534.4	4623.1	5573.4	LAST SURVEY - DEC 26, 2013
6092.4	10808.0	91.70	85.20	907.2	4596.2	4684.8	5635.4	EXTRAPOLATION TO TD

#### WELLBORE TARGET DETAILS (LAT/LONG)

Name	TVD	+N/-S	+E/-W	Latitude	Longitude
BHL (P4)- AS #5-62-25-0108XBH	6100.0	883.7	4600.2	40° 22' 38.807 N	104° 15' 48.459 W
LP (P4) - AS #5-62-25-0108XBH	6170.0	760.2	313.7	40° 22' 37.591 N	104° 16' 43.846 W



## Survey Report



<b>Company:</b>	BILL BARRETT CORPORATION	<b>Local Co-ordinate Reference:</b>	Well ANSCHUTZ STATE #5-62-25-0108XBH - Slot AS
<b>Project:</b>	WELD COUNTY, COLORADO	<b>TVD Reference:</b>	KB-EST @ 4598.0usft
<b>Site:</b>	SEC 25 T5N R62W 6th P.M.	<b>MD Reference:</b>	KB-EST @ 4598.0usft
<b>Well:</b>	ANSCHUTZ STATE #5-62-25-0108XBH	<b>North Reference:</b>	True
<b>Wellbore:</b>	JOB # 2009-244	<b>Survey Calculation Method:</b>	Minimum Curvature
<b>Design:</b>	FINAL SURVEYS	<b>Database:</b>	EDM 5000.1 Single User Db

<b>Project</b>	WELD COUNTY, COLORADO		
<b>Map System:</b>	US State Plane 1983	<b>System Datum:</b>	Mean Sea Level
<b>Geo Datum:</b>	North American Datum 1983		
<b>Map Zone:</b>	Colorado Northern Zone		Using geodetic scale factor

<b>Site</b>	SEC 25 T5N R62W 6th P.M.		
<b>Site Position:</b>		<b>Northing:</b>	1,381,779.29 usft
<b>From:</b>	Lat/Long	<b>Easting:</b>	3,339,905.18 usft
<b>Position Uncertainty:</b>	0.0 usft	<b>Slot Radius:</b>	13-3/16"
		<b>Latitude:</b>	40° 22' 29.881 N
		<b>Longitude:</b>	104° 16' 47.899 W
		<b>Grid Convergence:</b>	0.79 °

<b>Well</b>	ANSCHUTZ STATE #5-62-25-0108XBH - Slot AS 5-62-25-0108XBH		
<b>Well Position</b>	<b>+N/-S</b>	0.0 usft	<b>Northing:</b> 1,381,799.29 usft
	<b>+E/-W</b>	0.0 usft	<b>Easting:</b> 3,339,904.90 usft
<b>Position Uncertainty</b>	0.0 usft	<b>Wellhead Elevation:</b>	usft
		<b>Latitude:</b>	40° 22' 30.079 N
		<b>Longitude:</b>	104° 16' 47.899 W
		<b>Ground Level:</b>	4,581.0 usft

<b>Wellbore</b>	JOB # 2009-244		
-----------------	----------------	--	--

Magnetics	Model Name	Sample Date	Declination (°)	Dip Angle (°)	Field Strength (nT)
	IGRF2010	11/12/2013	8.26	67.02	52,908

<b>Design</b>	FINAL SURVEYS		
---------------	---------------	--	--

<b>Audit Notes:</b>				
<b>Version:</b>	1.0	<b>Phase:</b>	ACTUAL	<b>Tie On Depth:</b> 0.0
<b>Vertical Section:</b>	<b>Depth From (TVD) (usft)</b>	<b>+N/-S (usft)</b>	<b>+E/-W (usft)</b>	<b>Direction (°)</b>
	0.0	0.0	0.0	79.13

<b>Survey Program</b>	<b>Date</b>	27/12/2013		
From (usft)	To (usft)	Survey (Wellbore)	Tool Name	Description
139.0	10,808.0	FINAL SURVEYS (JOB # 2009-244)	MWD	MWD - Standard

Measured Depth (usft)	Inclination (°)	Azimuth (°)	Vertical Depth (usft)	Subsea Depth (usft)	+N/-S (usft)	+E/-W (usft)	Vertical Section (usft)	Dogleg Rate (°/100usft)	Build Rate (°/100usft)	Turn Rate (°/100usft)
0.0	0.00	0.00	0.0	4,598.0	0.0	0.0	0.0	0.00	0.00	0.00
139.0	0.30	112.60	139.0	4,459.0	-0.1	0.3	0.3	0.22	0.22	0.00
<b>START OF NUDGE</b>										
188.0	1.59	2.58	188.0	4,410.0	0.5	0.5	0.6	3.49	2.62	-224.53
200.0	2.00	0.60	200.0	4,398.0	0.9	0.5	0.6	3.49	3.46	-16.49
259.0	2.50	357.70	258.9	4,339.1	3.2	0.5	1.0	0.87	0.85	-4.92
320.0	4.60	5.60	319.8	4,278.2	6.9	0.6	1.9	3.53	3.44	12.95
382.0	6.20	359.30	381.5	4,216.5	12.8	0.8	3.2	2.75	2.58	-10.16
442.0	7.80	353.80	441.1	4,156.9	20.1	0.4	4.1	2.89	2.67	-9.17
503.0	8.50	350.60	501.5	4,096.5	28.6	-0.8	4.6	1.37	1.15	-5.25
563.0	9.20	345.50	560.8	4,037.2	37.6	-2.7	4.4	1.75	1.17	-8.50
625.0	9.90	341.70	621.9	3,976.1	47.5	-5.7	3.4	1.52	1.13	-6.13
686.0	10.60	343.00	681.9	3,916.1	57.8	-8.9	2.1	1.21	1.15	2.13
747.0	11.80	342.40	741.8	3,856.2	69.1	-12.5	0.8	1.98	1.97	-0.98
<b>SURFACE CASING</b>										
810.0	11.88	343.18	803.4	3,794.6	81.5	-16.3	-0.6	0.28	0.12	1.24
828.0	11.90	343.40	821.0	3,777.0	85.0	-17.4	-1.0	0.28	0.13	1.23

# Survey Report



<b>Company:</b>	BILL BARRETT CORPORATION	<b>Local Co-ordinate Reference:</b>	Well ANSCHUTZ STATE #5-62-25-0108XBH - Slot AS
<b>Project:</b>	WELD COUNTY, COLORADO	<b>TVD Reference:</b>	KB-EST @ 4598.0usft
<b>Site:</b>	SEC 25 T5N R62W 6th P.M.	<b>MD Reference:</b>	KB-EST @ 4598.0usft
<b>Well:</b>	ANSCHUTZ STATE #5-62-25-0108XBH	<b>North Reference:</b>	True
<b>Wellbore:</b>	JOB # 2009-244	<b>Survey Calculation Method:</b>	Minimum Curvature
<b>Design:</b>	FINAL SURVEYS	<b>Database:</b>	EDM 5000.1 Single User Db

Survey										
Measured Depth (usft)	Inclination (°)	Azimuth (°)	Vertical Depth (usft)	Subsea Depth (usft)	+N/-S (usft)	+E/-W (usft)	Vertical Section (usft)	Dogleg Rate (°/100usft)	Build Rate (°/100usft)	Turn Rate (°/100usft)
922.0	12.40	350.40	912.9	3,685.1	104.3	-21.8	-1.8	1.65	0.53	7.45
1,015.0	12.60	341.70	1,003.7	3,594.3	123.8	-26.7	-2.8	2.03	0.22	-9.35
1,109.0	11.90	337.10	1,095.6	3,502.4	142.4	-33.7	-6.2	1.28	-0.74	-4.89
1,203.0	11.30	337.10	1,187.7	3,410.3	159.8	-41.0	-10.1	0.64	-0.64	0.00
1,296.0	11.30	336.00	1,278.9	3,319.1	176.6	-48.3	-14.1	0.23	0.00	-1.18
1,390.0	10.80	335.60	1,371.1	3,226.9	193.0	-55.6	-18.2	0.54	-0.53	-0.43
1,484.0	10.00	329.30	1,463.6	3,134.4	208.0	-63.5	-23.1	1.48	-0.85	-6.70
1,578.0	9.00	332.70	1,556.3	3,041.7	221.6	-71.0	-27.9	1.22	-1.06	3.62
1,672.0	8.80	349.10	1,649.2	2,948.8	235.2	-75.7	-30.0	2.70	-0.21	17.45
1,766.0	10.10	344.70	1,741.9	2,856.1	250.2	-79.3	-30.6	1.58	1.38	-4.68
1,861.0	11.60	340.60	1,835.2	2,762.8	267.2	-84.6	-32.7	1.77	1.58	-4.32
1,955.0	12.80	342.40	1,927.1	2,670.9	286.1	-90.9	-35.3	1.34	1.28	1.91
2,049.0	12.30	340.00	2,018.8	2,579.2	305.4	-97.5	-38.1	0.77	-0.53	-2.55
2,143.0	12.70	342.10	2,110.6	2,487.4	324.6	-104.1	-41.0	0.64	0.43	2.23
2,237.0	12.00	340.90	2,202.4	2,395.6	343.7	-110.5	-43.6	0.79	-0.74	-1.28
2,332.0	13.60	340.60	2,295.1	2,302.9	363.6	-117.4	-46.7	1.69	1.68	-0.32
2,426.0	12.40	350.20	2,386.7	2,211.3	384.0	-122.8	-48.2	2.62	-1.28	10.21
2,520.0	13.70	348.10	2,478.3	2,119.7	404.8	-126.8	-48.2	1.47	1.38	-2.23
2,615.0	12.60	347.90	2,570.8	2,027.2	425.9	-131.3	-48.6	1.16	-1.16	-0.21
2,709.0	13.60	347.30	2,662.3	1,935.7	446.7	-135.9	-49.2	1.07	1.06	-0.64
2,803.0	13.40	343.60	2,753.7	1,844.3	468.0	-141.4	-50.6	0.94	-0.21	-3.94
2,897.0	12.20	339.80	2,845.4	1,752.6	487.7	-147.9	-53.2	1.56	-1.28	-4.04
2,991.0	13.40	340.40	2,937.0	1,661.0	507.3	-155.0	-56.5	1.28	1.28	0.64
3,085.0	12.30	337.90	3,028.7	1,569.3	526.9	-162.4	-60.1	1.31	-1.17	-2.66
3,180.0	12.50	341.50	3,121.5	1,476.5	546.0	-169.5	-63.4	0.84	0.21	3.79
3,274.0	12.50	344.00	3,213.2	1,384.8	565.4	-175.5	-65.7	0.58	0.00	2.66
3,368.0	13.00	351.30	3,304.9	1,293.1	585.6	-179.9	-66.2	1.79	0.53	7.77
3,462.0	13.40	349.80	3,396.5	1,201.5	606.8	-183.4	-65.7	0.56	0.43	-1.60
3,557.0	13.80	350.30	3,488.8	1,109.2	628.8	-187.3	-65.3	0.44	0.42	0.53
3,651.0	13.90	349.30	3,580.1	1,017.9	651.0	-191.3	-65.0	0.28	0.11	-1.06
3,745.0	13.00	347.60	3,671.5	926.5	672.4	-195.6	-65.3	1.05	-0.96	-1.81
3,839.0	12.60	348.80	3,763.1	834.9	692.8	-199.9	-65.6	0.51	-0.43	1.28
3,933.0	11.20	349.80	3,855.1	742.9	711.8	-203.5	-65.6	1.51	-1.49	1.06
4,026.0	9.70	343.60	3,946.6	651.4	728.2	-207.3	-66.2	2.01	-1.61	-6.67
4,121.0	7.00	344.30	4,040.6	557.4	741.5	-211.1	-67.5	2.84	-2.84	0.74
4,214.0	4.80	346.50	4,133.1	464.9	750.7	-213.6	-68.1	2.38	-2.37	2.37
4,308.0	2.20	338.50	4,226.9	371.1	756.2	-215.2	-68.6	2.81	-2.77	-8.51
4,402.0	0.40	194.60	4,320.9	277.1	757.6	-215.9	-69.1	2.70	-1.91	-153.09
4,496.0	1.00	223.80	4,414.8	183.2	756.7	-216.6	-69.9	0.72	0.64	31.06
4,591.0	1.60	162.50	4,509.8	88.2	754.8	-216.7	-70.5	1.50	0.63	-64.53
4,685.0	1.20	155.30	4,603.8	-5.8	752.7	-215.9	-70.1	0.46	-0.43	-7.66
4,779.0	1.20	156.40	4,697.8	-99.8	750.9	-215.1	-69.6	0.02	0.00	1.17
4,872.0	2.20	181.80	4,790.7	-192.7	748.2	-214.8	-69.8	1.32	1.08	27.31
4,966.0	1.70	176.10	4,884.7	-286.7	745.0	-214.8	-70.4	0.57	-0.53	-6.06
5,061.0	1.60	177.40	4,979.6	-381.6	742.3	-214.6	-70.7	0.11	-0.11	1.37
5,155.0	1.60	163.20	5,073.6	-475.6	739.7	-214.2	-70.8	0.42	0.00	-15.11
5,248.0	1.50	164.80	5,166.6	-568.6	737.3	-213.5	-70.5	0.12	-0.11	1.72
5,342.0	0.50	230.70	5,260.6	-662.6	735.8	-213.5	-70.8	1.46	-1.06	70.11
5,437.0	0.30	223.10	5,355.6	-757.6	735.4	-214.0	-71.4	0.22	-0.21	-8.00
5,531.0	0.50	183.10	5,449.6	-851.6	734.8	-214.1	-71.7	0.35	0.21	-42.55
5,593.0	0.70	200.90	5,511.6	-913.6	734.2	-214.3	-71.9	0.44	0.32	28.71
5,625.0	0.70	194.00	5,543.6	-945.6	733.8	-214.4	-72.1	0.26	0.00	-21.56
5,657.0	0.50	212.60	5,575.5	-977.5	733.5	-214.5	-72.3	0.86	-0.62	58.12
<b>KOP</b>										
5,678.0	1.64	117.78	5,596.5	-998.5	733.3	-214.3	-72.1	8.35	5.42	-451.54
5,720.0	5.10	106.50	5,638.5	-1,040.5	732.5	-212.0	-70.0	8.35	8.24	-26.85
5,782.0	12.40	96.30	5,699.7	-1,101.7	731.0	-202.7	-61.2	11.99	11.77	-16.45
5,814.0	16.40	91.80	5,730.7	-1,132.7	730.4	-194.8	-53.5	12.97	12.50	-14.06

# Survey Report



<b>Company:</b>	BILL BARRETT CORPORATION	<b>Local Co-ordinate Reference:</b>	Well ANSCHUTZ STATE #5-62-25-0108XBH - Slot AS
<b>Project:</b>	WELD COUNTY, COLORADO	<b>TVD Reference:</b>	KB-EST @ 4598.0usft
<b>Site:</b>	SEC 25 T5N R62W 6th P.M.	<b>MD Reference:</b>	KB-EST @ 4598.0usft
<b>Well:</b>	ANSCHUTZ STATE #5-62-25-0108XBH	<b>North Reference:</b>	True
<b>Wellbore:</b>	JOB # 2009-244	<b>Survey Calculation Method:</b>	Minimum Curvature
<b>Design:</b>	FINAL SURVEYS	<b>Database:</b>	EDM 5000.1 Single User Db

Survey										
Measured Depth (usft)	Inclination (°)	Azimuth (°)	Vertical Depth (usft)	Subsea Depth (usft)	+N/-S (usft)	+E/-W (usft)	Vertical Section (usft)	Dogleg Rate (°/100usft)	Build Rate (°/100usft)	Turn Rate (°/100usft)
5,845.0	19.40	89.70	5,760.2	-1,162.2	730.3	-185.3	-44.2	9.90	9.68	-6.77
5,876.0	23.60	90.70	5,789.0	-1,191.0	730.3	-173.9	-33.0	13.60	13.55	3.23
5,907.0	26.70	90.50	5,817.1	-1,219.1	730.1	-160.7	-20.1	10.00	10.00	-0.65
5,938.0	31.10	92.00	5,844.2	-1,246.2	729.8	-145.8	-5.5	14.38	14.19	4.84
5,969.0	34.00	90.00	5,870.3	-1,272.3	729.5	-129.1	10.9	9.98	9.35	-6.45
6,001.0	34.90	87.40	5,896.7	-1,298.7	729.9	-111.0	28.7	5.39	2.81	-8.12
6,032.0	36.40	86.30	5,921.9	-1,323.9	730.9	-93.0	46.6	5.26	4.84	-3.55
6,063.0	41.00	85.70	5,946.1	-1,348.1	732.3	-73.6	65.8	14.89	14.84	-1.94
6,095.0	42.20	87.40	5,970.0	-1,372.0	733.6	-52.4	86.9	5.15	3.75	5.31
6,126.0	44.60	87.80	5,992.6	-1,394.6	734.4	-31.1	108.0	7.79	7.74	1.29
6,158.0	47.30	89.20	6,014.8	-1,416.8	735.0	-8.2	130.7	9.00	8.44	4.37
6,189.0	51.20	89.20	6,035.0	-1,437.0	735.4	15.3	153.8	12.58	12.58	0.00
6,221.0	55.30	89.30	6,054.2	-1,456.2	735.7	41.0	179.0	12.81	12.81	0.31
6,252.0	58.40	88.90	6,071.1	-1,473.1	736.1	66.9	204.6	10.06	10.00	-1.29
6,284.0	60.50	88.70	6,087.4	-1,489.4	736.7	94.5	231.7	6.58	6.56	-0.62
6,315.0	62.00	88.00	6,102.3	-1,504.3	737.5	121.6	258.6	5.23	4.84	-2.26
6,346.0	64.50	87.40	6,116.3	-1,518.3	738.6	149.3	285.9	8.25	8.06	-1.94
6,378.0	68.30	86.30	6,129.1	-1,531.1	740.2	178.6	315.0	12.29	11.87	-3.44
6,409.0	72.20	86.00	6,139.5	-1,541.5	742.2	207.7	343.9	12.61	12.58	-0.97
6,440.0	76.30	86.60	6,148.0	-1,550.0	744.1	237.4	373.5	13.36	13.23	1.94
6,471.0	79.30	86.10	6,154.5	-1,556.5	746.0	267.7	403.6	9.80	9.68	-1.61
6,502.0	81.50	86.60	6,159.7	-1,561.7	748.0	298.2	433.9	7.27	7.10	1.61
6,533.0	83.50	86.20	6,163.7	-1,565.7	749.9	328.8	464.4	6.58	6.45	-1.29
6,542.0	85.10	85.60	6,164.6	-1,566.6	750.5	337.8	473.3	18.98	17.78	-6.67
<b>ICP</b>										
<b>6,595.0</b>	<b>88.13</b>	<b>86.18</b>	<b>6,167.8</b>	<b>-1,569.8</b>	<b>754.3</b>	<b>390.5</b>	<b>525.8</b>	<b>5.82</b>	<b>5.71</b>	<b>1.10</b>
6,633.0	90.30	86.60	6,168.3	-1,570.3	756.7	428.5	563.5	5.82	5.71	1.10
6,728.0	90.00	88.50	6,168.0	-1,570.0	760.8	523.4	657.5	2.02	-0.32	2.00
6,822.0	91.00	88.20	6,167.2	-1,569.2	763.5	617.3	750.3	1.11	1.06	-0.32
6,916.0	91.10	87.40	6,165.5	-1,567.5	767.1	711.2	843.2	0.86	0.11	-0.85
7,009.0	89.80	85.50	6,164.7	-1,566.7	772.8	804.0	935.4	2.48	-1.40	-2.04
7,104.0	92.10	89.50	6,163.2	-1,565.2	777.0	898.9	1,029.4	4.86	2.42	4.21
7,198.0	92.40	88.20	6,159.5	-1,561.5	778.9	992.8	1,121.9	1.42	0.32	-1.38
7,292.0	91.40	87.30	6,156.4	-1,558.4	782.6	1,086.7	1,214.8	1.43	-1.06	-0.96
7,386.0	89.10	86.20	6,156.0	-1,558.0	787.9	1,180.5	1,308.0	2.71	-2.45	-1.17
7,480.0	90.50	88.70	6,156.3	-1,558.3	792.1	1,274.4	1,401.0	3.05	1.49	2.66
7,574.0	90.40	87.00	6,155.5	-1,557.5	795.6	1,368.4	1,493.9	1.81	-0.11	-1.81
7,668.0	90.70	87.30	6,154.6	-1,556.6	800.3	1,462.2	1,587.0	0.45	0.32	0.32
7,763.0	91.40	88.40	6,152.9	-1,554.9	803.8	1,557.2	1,680.8	1.37	0.74	1.16
7,857.0	94.50	89.70	6,148.1	-1,550.1	805.4	1,651.0	1,773.3	3.58	3.30	1.38
7,951.0	94.90	88.20	6,140.4	-1,542.4	807.1	1,744.7	1,865.6	1.65	0.43	-1.60
8,045.0	93.40	90.20	6,133.6	-1,535.6	808.4	1,838.4	1,957.9	2.66	-1.60	2.13
8,139.0	93.40	90.00	6,128.0	-1,530.0	808.3	1,932.2	2,050.0	0.21	0.00	-0.21
8,234.0	91.80	91.70	6,123.7	-1,525.7	806.8	2,027.1	2,142.9	2.46	-1.68	1.79
8,328.0	89.60	90.90	6,122.5	-1,524.5	804.7	2,121.1	2,234.8	2.49	-2.34	-0.85
8,422.0	88.70	89.70	6,123.9	-1,525.9	804.2	2,215.1	2,327.0	1.60	-0.96	-1.28
8,516.0	87.30	89.60	6,127.2	-1,529.2	804.8	2,309.0	2,419.4	1.49	-1.49	-0.11
8,610.0	89.30	88.90	6,130.0	-1,532.0	806.0	2,403.0	2,511.9	2.25	2.13	-0.74
8,704.0	88.30	87.40	6,132.0	-1,534.0	809.1	2,496.9	2,604.7	1.92	-1.06	-1.60
8,799.0	89.40	87.10	6,133.9	-1,535.9	813.6	2,591.8	2,698.7	1.20	1.16	-0.32
8,892.0	90.20	86.80	6,134.2	-1,536.2	818.6	2,684.6	2,790.8	0.92	0.86	-0.32
8,986.0	91.70	88.30	6,132.6	-1,534.6	822.6	2,778.5	2,883.8	2.26	1.60	1.60
9,080.0	91.80	88.60	6,129.8	-1,531.8	825.1	2,872.4	2,976.5	0.34	0.11	0.32
9,174.0	92.30	88.90	6,126.4	-1,528.4	827.2	2,966.4	3,069.1	0.62	0.53	0.32
9,268.0	92.50	87.90	6,122.5	-1,524.5	829.8	3,060.2	3,161.8	1.08	0.21	-1.06
9,362.0	91.70	88.20	6,119.0	-1,521.0	833.0	3,154.1	3,254.6	0.91	-0.85	0.32
9,456.0	91.50	89.60	6,116.4	-1,518.4	834.8	3,248.1	3,347.2	1.50	-0.21	1.49
9,551.0	91.90	89.40	6,113.6	-1,515.6	835.6	3,343.0	3,440.6	0.47	0.42	-0.21

# Survey Report



<b>Company:</b>	BILL BARRETT CORPORATION	<b>Local Co-ordinate Reference:</b>	Well ANSCHUTZ STATE #5-62-25-0108XBH - Slot AS
<b>Project:</b>	WELD COUNTY, COLORADO	<b>TVD Reference:</b>	KB-EST @ 4598.0usft
<b>Site:</b>	SEC 25 T5N R62W 6th P.M.	<b>MD Reference:</b>	KB-EST @ 4598.0usft
<b>Well:</b>	ANSCHUTZ STATE #5-62-25-0108XBH	<b>North Reference:</b>	True
<b>Wellbore:</b>	JOB # 2009-244	<b>Survey Calculation Method:</b>	Minimum Curvature
<b>Design:</b>	FINAL SURVEYS	<b>Database:</b>	EDM 5000.1 Single User Db

Survey										
Measured Depth (usft)	Inclination (°)	Azimuth (°)	Vertical Depth (usft)	Subsea Depth (usft)	+N/-S (usft)	+E/-W (usft)	Vertical Section (usft)	Dogleg Rate (°/100usft)	Build Rate (°/100usft)	Turn Rate (°/100usft)
9,645.0	90.10	89.00	6,111.9	-1,513.9	836.9	3,437.0	3,533.2	1.96	-1.91	-0.43
9,740.0	88.00	88.70	6,113.5	-1,515.5	838.8	3,531.9	3,626.8	2.23	-2.21	-0.32
9,834.0	86.50	88.60	6,118.0	-1,520.0	841.1	3,625.8	3,719.4	1.60	-1.60	-0.11
9,928.0	87.30	87.90	6,123.1	-1,525.1	843.9	3,719.6	3,812.0	1.13	0.85	-0.74
10,022.0	88.80	87.90	6,126.3	-1,528.3	847.4	3,813.5	3,904.9	1.60	1.60	0.00
10,117.0	90.90	86.00	6,126.6	-1,528.6	852.4	3,908.4	3,999.0	2.98	2.21	-2.00
10,211.0	92.20	86.00	6,124.0	-1,526.0	859.0	4,002.1	4,092.3	1.38	1.38	0.00
10,304.0	92.30	86.70	6,120.4	-1,522.4	864.9	4,094.8	4,184.5	0.76	0.11	0.75
10,399.0	93.30	85.70	6,115.7	-1,517.7	871.2	4,189.5	4,278.6	1.49	1.05	-1.05
10,493.0	95.70	84.60	6,108.3	-1,510.3	879.1	4,282.9	4,371.8	2.81	2.55	-1.17
10,588.0	93.20	84.60	6,101.0	-1,503.0	888.0	4,377.2	4,466.1	2.63	-2.63	0.00
10,680.0	92.30	85.00	6,096.6	-1,498.6	896.3	4,468.7	4,557.5	1.07	-0.98	0.43
LAST SURVEY - DEC 26, 2013										
10,746.0	91.70	85.20	6,094.3	-1,496.3	902.0	4,534.4	4,623.1	0.96	-0.91	0.30
EXTRAPOLATION TO TD										
10,808.0	91.70	85.20	6,092.4	-1,494.4	907.2	4,596.2	4,684.8	0.00	0.00	0.00



# Survey Report



<b>Company:</b>	BILL BARRETT CORPORATION	<b>Local Co-ordinate Reference:</b>	Well ANSCHUTZ STATE #5-62-25-0108XBH - Slot AS
<b>Project:</b>	WELD COUNTY, COLORADO	<b>TVD Reference:</b>	KB-EST @ 4598.0usft
<b>Site:</b>	SEC 25 T5N R62W 6th P.M.	<b>MD Reference:</b>	KB-EST @ 4598.0usft
<b>Well:</b>	ANSCHUTZ STATE #5-62-25-0108XBH	<b>North Reference:</b>	True
<b>Wellbore:</b>	JOB # 2009-244	<b>Survey Calculation Method:</b>	Minimum Curvature
<b>Design:</b>	FINAL SURVEYS	<b>Database:</b>	EDM 5000.1 Single User Db

Targets									
Target Name	- hit/miss target	Dip Angle	Dip Dir.	TVD	+N/-S	+E/-W	Northing	Easting	
- Shape		(°)	(°)	(usft)	(usft)	(usft)	(usft)	(usft)	Latitude Longitude
BHL (P4)- AS #5-62-2		0.00	0.00	6,100.0	883.7	4,600.2	1,382,746.17	3,344,492.35	40° 22' 38.807 N 104° 15' 48.459 W
- survey misses target center by 25.0usft at 10808.0usft MD (6092.4 TVD, 907.2 N, 4596.2 E)									
- Point									
LP - AS #5-62-25-108		0.00	0.00	6,095.0	758.8	289.0	1,382,561.96	3,340,183.43	40° 22' 37.577 N 104° 16' 44.165 W
- survey misses target center by 63.5usft at 6482.9usft MD (6156.6 TVD, 746.8 N, 279.3 E)									
- Point									
KOP		0.00	0.00	5,639.2	743.5	-240.1	1,382,539.39	3,339,654.61	40° 22' 37.426 N 104° 16' 51.002 W
- survey misses target center by 30.2usft at 5719.0usft MD (5637.4 TVD, 732.5 N, -212.1 E)									
- Point									
BHL *NEW*- AS #5-6-		0.00	0.00	6,025.0	859.5	4,600.2	1,382,721.96	3,344,492.69	40° 22' 38.568 N 104° 15' 48.459 W
- survey misses target center by 82.7usft at 10808.0usft MD (6092.4 TVD, 907.2 N, 4596.2 E)									
- Point									
BHL (P3)- AS #5-62-2		0.00	0.00	6,100.0	883.7	4,600.2	1,382,746.17	3,344,492.35	40° 22' 38.807 N 104° 15' 48.459 W
- survey misses target center by 25.0usft at 10808.0usft MD (6092.4 TVD, 907.2 N, 4596.2 E)									
- Point									
BHL (P2)- AS #5-62-2		0.00	0.00	6,090.0	883.7	4,600.2	1,382,746.17	3,344,492.35	40° 22' 38.807 N 104° 15' 48.459 W
- survey misses target center by 23.9usft at 10808.0usft MD (6092.4 TVD, 907.2 N, 4596.2 E)									
- Point									
LP (P4) - AS #5-62-2		0.00	0.00	6,170.0	760.2	313.7	1,382,563.70	3,340,208.10	40° 22' 37.591 N 104° 16' 43.846 W
- survey misses target center by 13.8usft at 6519.5usft MD (6162.1 TVD, 749.0 N, 315.4 E)									
- Point									
LP (P2) - AS #5-62-2		0.00	0.00	6,160.0	758.8	289.0	1,382,561.96	3,340,183.43	40° 22' 37.577 N 104° 16' 44.165 W
- survey misses target center by 11.5usft at 6493.7usft MD (6158.4 TVD, 747.5 N, 290.0 E)									
- Point									
LP (P3) - AS #5-62-2		0.00	0.00	6,170.0	758.8	289.0	1,382,561.96	3,340,183.43	40° 22' 37.577 N 104° 16' 44.165 W
- survey misses target center by 16.2usft at 6495.4usft MD (6158.7 TVD, 747.6 N, 291.6 E)									
- Point									

Survey Annotations				
Measured Depth	Vertical Depth	Local Coordinates		Comment
(usft)	(usft)	+N/-S (usft)	+E/-W (usft)	
188.0	188.0	0.5	0.5	START OF NUDGE
810.0	803.4	81.5	-16.3	SURFACE CASING
5,678.0	5,596.5	733.3	-214.3	KOP
6,595.0	6,167.8	754.3	390.5	ICP
10,746.0	6,094.3	902.0	4,534.4	LAST SURVEY - DEC 26, 2013
10,808.0	6,092.4	907.2	4,596.2	EXTRAPOLATION TO TD

Checked By: \_\_\_\_\_ Approved By: \_\_\_\_\_ Date: \_\_\_\_\_