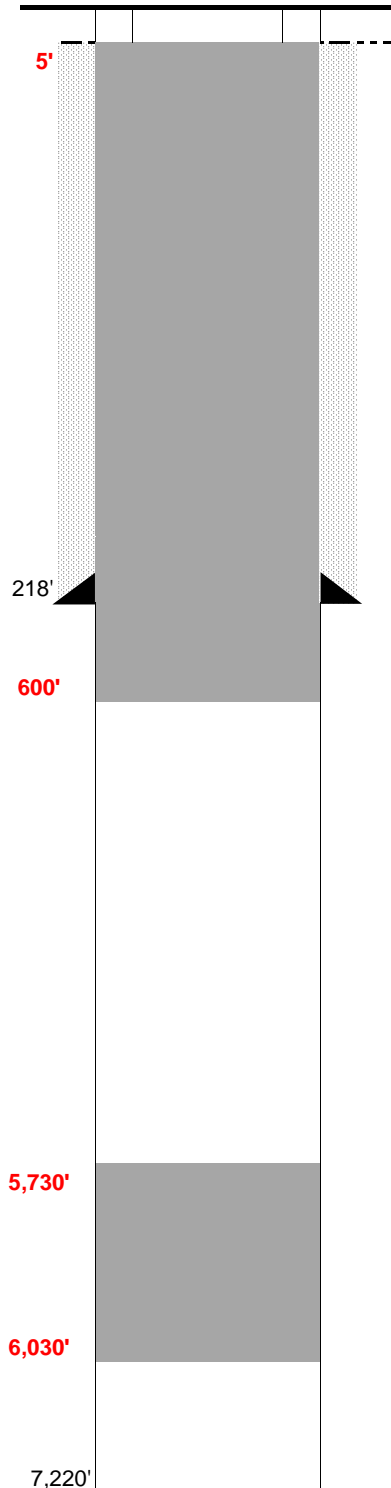


**WELL NAME:** State-Husky #1  
**OPERATOR:** Bennett Petroleum Corp.  
**COMP ZONE:** Dry Hole  
**LOCATION:** 9N 60W S36 NW NE

**COUNTY:** Weld  
**STATE:** Colorado  
**API :** 05-123-33402

**SPUD:** 6/28/75  
**P&A:** 7/9/75  
**GL:** 4,886'



**SURFACE CASING**

DEPTH: 218' SIZE: 8.625" GRADE: J-55 WT (#/ft): 24.0  
CEMENT: 200 sx of Class G + 3% CaCl2  
COMMENTS: \_\_\_\_\_

**PRODUCTION CASING**

DEPTH: \_\_\_\_\_ SIZE: \_\_\_\_\_ GRADE: \_\_\_\_\_ WT (#/ft): \_\_\_\_\_  
CEMENT: \_\_\_\_\_ TOC: \_\_\_\_\_  
COMMENTS: \_\_\_\_\_

PERFS: \_\_\_\_\_ - \_\_\_\_\_ PROD ZONE 1: \_\_\_\_\_  
PERFS: \_\_\_\_\_ - \_\_\_\_\_ ZONE 2: \_\_\_\_\_  
PERFS: \_\_\_\_\_ - \_\_\_\_\_ ZONE 3: \_\_\_\_\_

**PREVIOUS PLUGS**

RECOVERED: \_\_\_\_\_ SIZE: \_\_\_\_\_  
CMT 1: 218' - 168' COMMENT: 15 sx Cement  
CMT 2: 30' - 0' COMMENT: 10 sx Cement

**PROPOSED:** Plug #1: 6,030' to 5,730' (300' at top of Niobrara)  
Plug #2: 600' to surface (Isolate FW Sands)

**FORMATIONS:**

NIOBRARA: 6,030'  
FORT HAYS 6,326'  
CODELL \_\_\_\_\_  
D SAND 6,780'  
D SILT 6,846'  
J SAND 6,865'