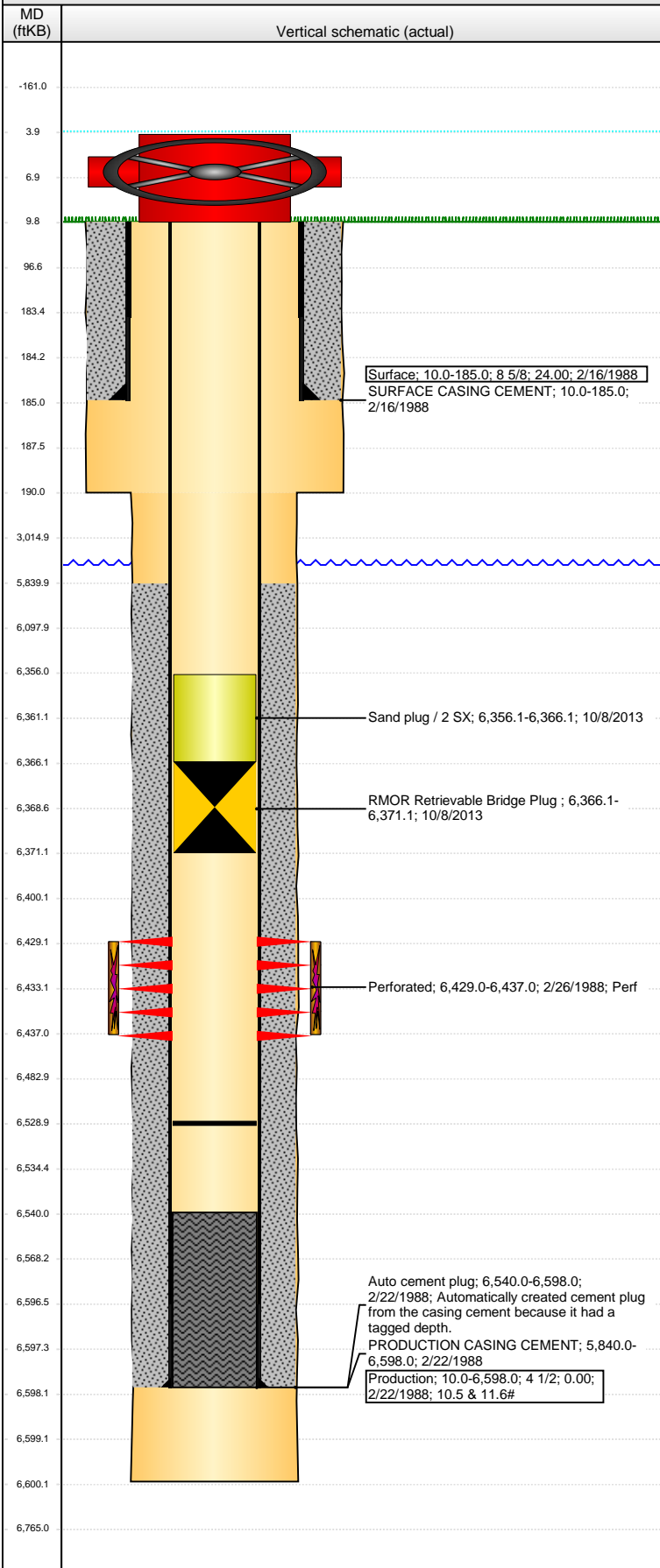


**Well Name: LILLI UNIT 12-07**

VERTICAL - ORIGINAL HOLE, 3/5/2014 8:03:56 AM



## Well Header

API	Business Unit	District	Well Config
05-123-13850	WATTENBERG	25	VERTICAL
Original KB Elevation (ft)	KB - GL / MSL (ftKB)	Spud Date	P & A Date
4,749.00	10.00	2/16/1988	

## Comment

PRODUCTION CASING STRING HAS 75 JNTS 11.6#, 82 JNTS 10.5#. HIC AT +/- 1419'.

## Directions To Well

HIWAY 14 & WCR 129, NORTH 5.2 MILES, WEST 3.3 MILES, SOUTH 0.5 MILE AND WEST 0.4 MILE INTO.

## Congressional Location

Quarter 1	Quarter 2	Quarter 3	Quarter 4	Section	Township	Twnshp N...	Range	Rng E/W Dir
		NW	SW	7	8	N	58	W

## Bottom Hole Location

North-South Distance (ft)	From N or S Line	East-West Distance (ft)	From E or W Line

## Plug Back Total Depths

Date	Depth (ftKB)	Method	Com
2/24/1988	6,540.0	CASED HOLE LOG	CBL DEPTH LOGGER
10/8/2013	6,528.7	TAG	TBG TALLY MEASUREMENT.

## Wellbore Sections

Section Des	Size (in)	Act Top, MD (ftKB)	Act Btm, MD (ftKB)
SURFACE	12 1/4	10.0	190.0
PRODUCTION	7 7/8	190.0	6,600.0

## Zone Statuses

Zone Name	Status Date	Status	Job
D SAND	3/5/1988	PR	DRILLING/COMPLETION - ORIGINAL, 2/16/1988 06:00

## Casing Strings

### Surface, 185.0ftKB

Casing Description	Run Date	OD (in)	Wt/Len (l...	Grade	Top, MD (ft...	MD (ftKB)
Surface	2/16/1988	8 5/8	24.00		10.0	185.0

### Production, 6,598.0ftKB

Casing Description	Run Date	OD (in)	Wt/Len (l...	Grade	Top, MD (ft...	MD (ftKB)
Production	2/22/1988	4 1/2			10.0	6,598.0

## Cement

Description	Top Depth (ftKB)	Bottom Depth (ftKB)
SURFACE CASING CEMENT	10.0	185.0
PRODUCTION CASING CEMENT	5,840.0	6,598.0

## Tubing Components

Item Des	OD (in)	Wt (lb/ft)	Grade	Jts	Len (ft)	Btm (ftKB)	Btm (TVD) (ftKB)

## Perforation Data

Zone	Bnch/St g	Entered Shot Total	Top (ftKB)	Btm (ftKB)	Date
D SAND, ORIGINAL HOLE		17	6,429.00	6,437.00	2/26/1988

## Stimulations & Treatments

Date	Zone	Primary Job Type
2/29/1988	D SAND, ORIGINAL HOLE	DRILLING/COMPLETION - ORIGINAL
Technical Result	Tech Result Details	Tech Result Note

## Comment

1,500 Gal 2% KCL

Date	Zone	Primary Job Type
3/1/1988	D SAND, ORIGINAL HOLE	DRILLING/COMPLETION - ORIGINAL
Technical Result	Tech Result Details	Tech Result Note

## Comment

50,000# Sand

## Other In Hole

Run Date	Des	OD (in)	Top (ftKB)	Btm (ftKB)
10/8/2013	RMOR Retrieval Bridge Plug	3.99	6,366.1	6,371.1
10/8/2013	Sand plug / 2 SX	3.99	6,356.1	6,366.1

## Logs

Date	Type	Top, MD (ftKB)	Btm, MD (ftKB)
2/21/1988	COMPENSATED DENSITY	5,600.0	6,598.0
2/21/1988	GAMMA RAY	5,600.0	6,598.0
2/21/1988	INDUCTION	185.0	6,598.0

**Well Name: LILLI UNIT 12-07**

VERTICAL - ORIGINAL HOLE, 3/5/2014 8:03:58 AM

## Logs

