

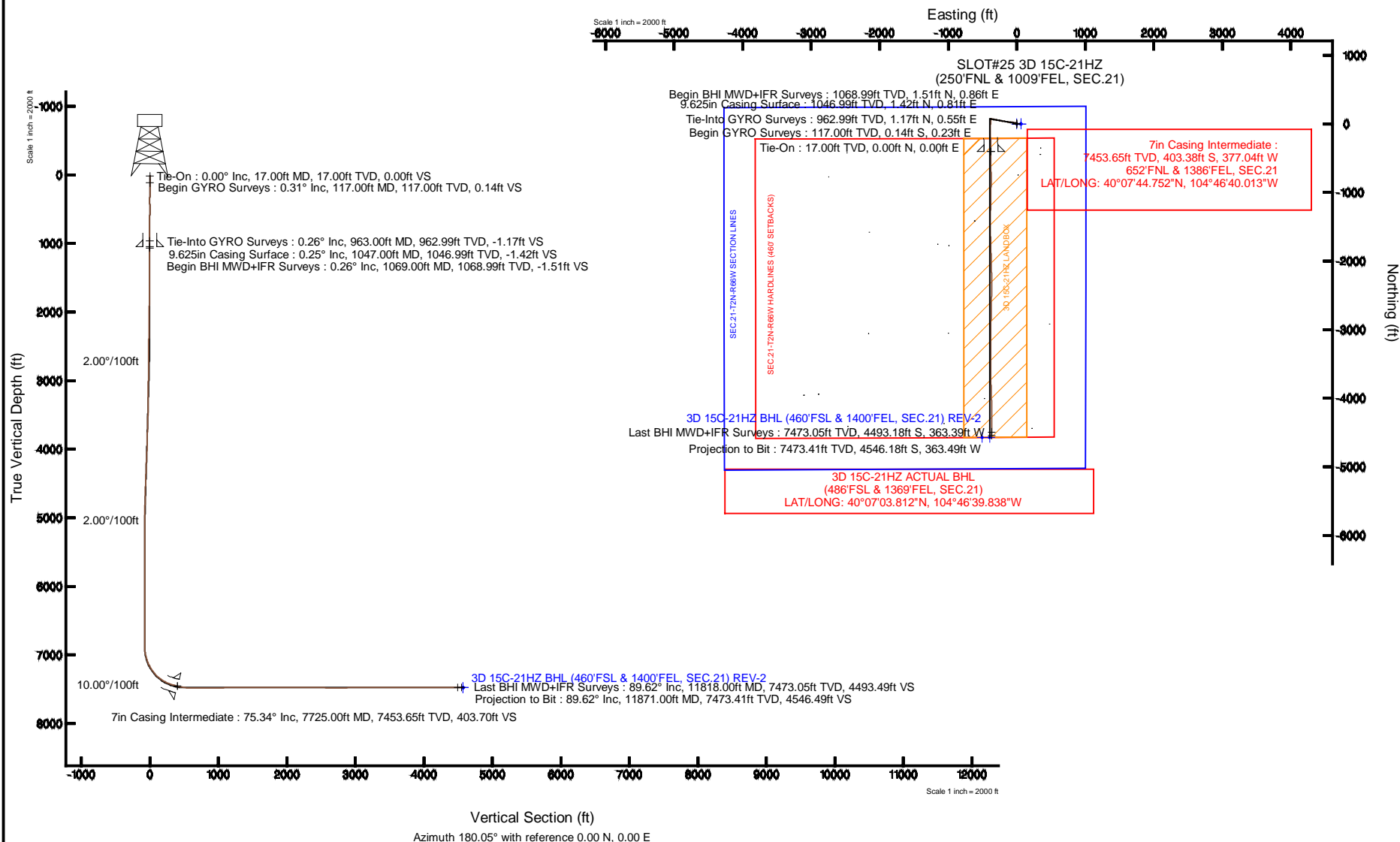
KERR-MCGEE OIL & GAS ONSHORE LP

Location: COLORADO Slot: SLOT#25 3D 15C-21HZ (250'FNL & 1009'FEL, SEC.21)
 Field: WELD COUNTY (KERR MCGEE) Well: 3D 15C-21HZ
 Facility: SEC.21-T2N-R66W Wellbore: 3D 15C-21HZ PWB



Plot reference wellpath is 3D 15C-21HZ (REV-B.0) PWP

True vertical depths are referenced to XTREME 8 (17KB) (RKB)	Grid System: NAD83 / Lambert Colorado SP, Northern Zone (501), US feet
Measured depths are referenced to XTREME 8 (17KB) (RKB)	North Reference: True north
XTREME 8 (17KB) (RKB) to Mean Sea Level: 5006 feet	Scale: True distance
Mean Sea Level to Mud line (At Slot: SLOT#25 3D 15C-21HZ (250'FNL & 1009'FEL, SEC.21): 0 feet	Depths are in feet
Coordinates are in feet referenced to Slot	Created by: precain on 04/Feb/2014



Actual Wellpath Report

3D 15C-21HZ AWP

Page 1 of 6

REFERENCE WELLPATH IDENTIFICATION

Operator	KERR-MCGEE OIL & GAS ONSHORE LP	Slot	SLOT#25 3D 15C-21HZ (250'FNL & 1009'FEL, SEC.21)
Area	COLORADO	Well	3D 15C-21HZ
Field	WELD COUNTY (KERR MCGEE)	Wellbore	3D 15C-21HZ AWB
Facility	SEC.21-T2N-R66W		

REPORT SETUP INFORMATION

Projection System	NAD83 / Lambert Colorado SP, Northern Zone (501), US feet	Software System	WellArchitect® 4.0.0
North Reference	True	User	Precain
Scale	0.999959	Report Generated	04/Feb/2014 at 16:01
Convergence at slot	n/a	Database/Source file	WellArchitectDB/3D_15C-21HZ_AWB.xml

WELLPATH LOCATION

	Local coordinates		Grid coordinates		Geographic coordinates	
	North[ft]	East[ft]	Easting[US ft]	Northing[US ft]	Latitude	Longitude
Slot Location	350.54	-349.23	3202320.61	1291102.90	40°07'48.738"N	104°46'35.159"W
Facility Reference Pt			3202672.68	1290755.25	40°07'45.274"N	104°46'30.663"W
Field Reference Pt			3197771.84	1268891.29	40°04'09.600"N	104°47'36.000"W

WELLPATH DATUM

Calculation method	Minimum curvature	XTREME 8 (17'KB) (RKB) to Facility Vertical Datum	5006.00ft
Horizontal Reference Pt	Slot	XTREME 8 (17'KB) (RKB) to Mean Sea Level	5006.00ft
Vertical Reference Pt	XTREME 8 (17'KB) (RKB)	XTREME 8 (17'KB) (RKB) to Mud Line at Slot (SLOT#25 3D 15C-21HZ (250'FNL & 1009'FEL, SEC.21))	5006.00ft
MD Reference Pt	XTREME 8 (17'KB) (RKB)	Section Origin	N 0.00, E 0.00 ft
Field Vertical Reference	Mean Sea Level	Section Azimuth	180.05°

Actual Wellpath Report

3D 15C-21HZ AWP

Page 2 of 6

REFERENCE WELLPATH IDENTIFICATION

Operator	KERR-MCGEE OIL & GAS ONSHORE LP	Slot	SLOT#25 3D 15C-21HZ (250'FNL & 1009'FEL, SEC.21)
Area	COLORADO	Well	3D 15C-21HZ
Field	WELD COUNTY (KERR MCGEE)	Wellbore	3D 15C-21HZ AWB
Facility	SEC.21-T2N-R66W		

WELLPATH DATA (133 stations) † = interpolated/extrapolated station

MD [ft]	Inclination [°]	Azimuth [°]	TVD [ft]	Vert Sect [ft]	North [ft]	East [ft]	Latitude	Longitude	DLS [°/100ft]	Comments
0.00†	0.000	120.530	0.00	0.00	0.00	0.00	40°07'48.738"N	104°46'35.159"W	0.00	
17.00	0.000	120.530	17.00	0.00	0.00	0.00	40°07'48.738"N	104°46'35.159"W	0.00	Tie-On
117.00	0.310	120.530	117.00	0.14	-0.14	0.23	40°07'48.737"N	104°46'35.156"W	0.31	Begin GYRO Surveys
217.00	0.280	43.740	217.00	0.10	-0.10	0.63	40°07'48.737"N	104°46'35.151"W	0.37	
317.00	0.300	314.060	317.00	-0.26	0.26	0.62	40°07'48.741"N	104°46'35.151"W	0.41	
417.00	0.200	153.790	417.00	-0.29	0.29	0.50	40°07'48.741"N	104°46'35.153"W	0.49	
517.00	0.260	98.410	517.00	-0.10	0.10	0.81	40°07'48.739"N	104°46'35.149"W	0.22	
617.00	0.490	351.900	617.00	-0.49	0.49	0.97	40°07'48.743"N	104°46'35.147"W	0.62	
717.00	0.400	312.810	716.99	-1.15	1.15	0.65	40°07'48.749"N	104°46'35.151"W	0.31	
817.00	0.200	225.420	816.99	-1.26	1.26	0.27	40°07'48.750"N	104°46'35.155"W	0.44	
917.00	0.240	93.130	916.99	-1.13	1.13	0.36	40°07'48.749"N	104°46'35.154"W	0.40	
963.00	0.260	60.960	962.99	-1.17	1.17	0.55	40°07'48.750"N	104°46'35.152"W	0.30	Tie-Into GYRO Surveys
1069.00	0.260	26.170	1068.99	-1.51	1.51	0.86	40°07'48.753"N	104°46'35.148"W	0.15	Begin BHI MWD+IFR Surveys
1161.00	0.330	341.000	1160.99	-1.94	1.94	0.87	40°07'48.757"N	104°46'35.148"W	0.26	
1345.00	0.350	37.770	1344.99	-2.89	2.89	1.04	40°07'48.767"N	104°46'35.146"W	0.18	
1619.00	0.610	31.510	1618.98	-4.80	4.79	2.31	40°07'48.785"N	104°46'35.129"W	0.10	
1803.00	0.490	8.440	1802.97	-6.41	6.41	2.94	40°07'48.801"N	104°46'35.121"W	0.14	
2077.00	0.600	21.550	2076.96	-8.90	8.90	3.64	40°07'48.826"N	104°46'35.112"W	0.06	
2260.00	1.170	0.080	2259.93	-11.66	11.66	4.00	40°07'48.853"N	104°46'35.108"W	0.36	
2351.00	1.580	315.460	2350.91	-13.49	13.48	3.12	40°07'48.871"N	104°46'35.119"W	1.22	
2443.00	2.270	292.450	2442.86	-15.08	15.08	0.54	40°07'48.887"N	104°46'35.152"W	1.11	
2535.00	3.470	280.120	2534.74	-16.26	16.27	-3.88	40°07'48.899"N	104°46'35.209"W	1.46	
2626.00	3.480	294.550	2625.58	-17.89	17.90	-9.11	40°07'48.915"N	104°46'35.276"W	0.96	
2717.00	3.830	280.840	2716.39	-19.61	19.62	-14.60	40°07'48.932"N	104°46'35.347"W	1.03	
2803.00	4.480	271.080	2802.17	-20.20	20.22	-20.78	40°07'48.938"N	104°46'35.427"W	1.11	
2888.00	5.460	273.630	2886.85	-20.52	20.54	-28.14	40°07'48.941"N	104°46'35.521"W	1.18	
2973.00	7.240	273.430	2971.32	-21.09	21.12	-37.52	40°07'48.947"N	104°46'35.642"W	2.09	
3058.00	8.400	271.750	3055.53	-21.59	21.63	-49.07	40°07'48.952"N	104°46'35.791"W	1.39	
3144.00	9.510	272.910	3140.48	-22.13	22.18	-62.45	40°07'48.957"N	104°46'35.963"W	1.31	
3229.00	10.870	274.190	3224.14	-23.06	23.12	-77.45	40°07'48.966"N	104°46'36.156"W	1.62	
3314.00	10.620	272.810	3307.65	-24.01	24.09	-93.27	40°07'48.976"N	104°46'36.360"W	0.42	
3400.00	11.080	275.850	3392.11	-25.23	25.32	-109.41	40°07'48.988"N	104°46'36.568"W	0.85	
3485.00	11.020	278.880	3475.54	-27.30	27.41	-125.56	40°07'49.009"N	104°46'36.775"W	0.69	
3571.00	8.220	279.790	3560.32	-29.60	29.72	-139.74	40°07'49.032"N	104°46'36.958"W	3.26	
3656.00	8.760	283.060	3644.39	-32.09	32.22	-152.03	40°07'49.056"N	104°46'37.116"W	0.85	
3741.00	9.300	279.930	3728.33	-34.73	34.87	-165.10	40°07'49.083"N	104°46'37.285"W	0.86	
3826.00	10.510	272.970	3812.07	-36.30	36.45	-179.61	40°07'49.098"N	104°46'37.471"W	2.00	
3911.00	11.330	276.760	3895.53	-37.67	37.84	-195.65	40°07'49.112"N	104°46'37.678"W	1.28	
3997.00	9.940	284.070	3980.05	-40.46	40.64	-211.24	40°07'49.140"N	104°46'37.878"W	2.25	
4082.00	11.170	282.700	4063.61	-44.04	44.23	-226.38	40°07'49.175"N	104°46'38.074"W	1.48	
4167.00	11.850	283.210	4146.90	-47.83	48.03	-242.91	40°07'49.213"N	104°46'38.286"W	0.81	
4252.00	13.140	278.430	4229.89	-51.22	51.45	-260.97	40°07'49.246"N	104°46'38.519"W	1.94	
4337.00	12.390	278.890	4312.79	-54.03	54.27	-279.53	40°07'49.274"N	104°46'38.758"W	0.89	
4422.00	11.780	285.890	4395.91	-57.80	58.06	-296.89	40°07'49.312"N	104°46'38.981"W	1.87	
4507.00	10.060	280.350	4479.37	-61.50	61.77	-312.54	40°07'49.348"N	104°46'39.183"W	2.37	

Actual Wellpath Report

3D 15C-21HZ AWP

Page 3 of 6

REFERENCE WELLPATH IDENTIFICATION

Operator	KERR-MCGEE OIL & GAS ONSHORE LP	Slot	SLOT#25 3D 15C-21HZ (250'FNL & 1009'FEL, SEC.21)
Area	COLORADO	Well	3D 15C-21HZ
Field	WELD COUNTY (KERR MCGEE)	Wellbore	3D 15C-21HZ AWB
Facility	SEC.21-T2N-R66W		

WELLPATH DATA (133 stations) † = interpolated/extrapolated station

MD [ft]	Inclination [°]	Azimuth [°]	TVD [ft]	Vert Sect [ft]	North [ft]	East [ft]	Latitude	Longitude	DLS [°/100ft]	Comments
4592.00	10.550	278.030	4563.00	-63.91	64.19	-327.55	40°07'49.372"N	104°46'39.376"W	0.76	
4677.00	8.930	278.890	4646.77	-66.00	66.29	-341.77	40°07'49.393"N	104°46'39.559"W	1.91	
4762.00	7.990	280.710	4730.85	-68.11	68.41	-354.10	40°07'49.414"N	104°46'39.718"W	1.15	
4848.00	7.330	283.470	4816.08	-70.49	70.80	-365.30	40°07'49.438"N	104°46'39.862"W	0.88	
4933.00	5.790	277.250	4900.52	-72.28	72.60	-374.83	40°07'49.455"N	104°46'39.985"W	1.99	
5018.00	3.510	272.630	4985.24	-72.94	73.26	-381.68	40°07'49.462"N	104°46'40.073"W	2.72	
5103.00	2.030	260.380	5070.13	-72.80	73.13	-385.77	40°07'49.461"N	104°46'40.125"W	1.87	
5188.00	0.400	337.250	5155.11	-72.82	73.15	-387.37	40°07'49.461"N	104°46'40.146"W	2.33	
5359.00	0.940	5.270	5326.10	-74.77	75.10	-387.47	40°07'49.480"N	104°46'40.147"W	0.36	
5529.00	0.710	92.300	5496.09	-76.12	76.45	-386.29	40°07'49.493"N	104°46'40.132"W	0.68	
5785.00	0.970	102.550	5752.06	-75.59	75.91	-382.59	40°07'49.488"N	104°46'40.085"W	0.12	
6040.00	1.090	106.550	6007.02	-74.43	74.75	-378.16	40°07'49.477"N	104°46'40.027"W	0.05	
6211.00	1.020	79.560	6177.99	-74.24	74.57	-375.10	40°07'49.475"N	104°46'39.988"W	0.29	
6467.00	0.280	23.880	6433.98	-75.23	75.55	-372.61	40°07'49.485"N	104°46'39.956"W	0.35	
6552.00	0.590	333.860	6518.98	-75.81	76.13	-372.72	40°07'49.490"N	104°46'39.957"W	0.54	
6637.00	1.340	302.100	6603.96	-76.73	77.05	-373.75	40°07'49.499"N	104°46'39.971"W	1.05	
6723.00	0.670	252.370	6689.95	-77.12	77.44	-375.08	40°07'49.503"N	104°46'39.988"W	1.21	
6808.00	0.870	271.340	6774.94	-76.98	77.30	-376.20	40°07'49.502"N	104°46'40.002"W	0.38	
6936.00	2.930	201.250	6902.88	-73.95	74.27	-378.36	40°07'49.472"N	104°46'40.030"W	2.15	
6978.00	6.570	189.730	6944.73	-70.58	70.90	-379.15	40°07'49.439"N	104°46'40.040"W	8.92	
7021.00	11.210	182.420	6987.20	-63.98	64.30	-379.75	40°07'49.373"N	104°46'40.048"W	11.08	
7064.00	15.290	185.100	7029.05	-54.15	54.47	-380.43	40°07'49.276"N	104°46'40.057"W	9.59	
7106.00	18.680	183.710	7069.21	-41.91	42.24	-381.35	40°07'49.155"N	104°46'40.069"W	8.13	
7149.00	22.400	181.760	7109.47	-26.85	27.17	-382.05	40°07'49.007"N	104°46'40.078"W	8.80	
7192.00	26.270	181.860	7148.64	-9.14	9.47	-382.61	40°07'48.832"N	104°46'40.085"W	9.00	
7234.00	30.590	182.050	7185.57	10.84	-10.51	-383.30	40°07'48.634"N	104°46'40.094"W	10.29	
7320.00	38.670	182.310	7256.27	59.64	-59.31	-385.17	40°07'48.152"N	104°46'40.118"W	9.40	
7362.00	43.240	181.840	7287.98	87.14	-86.81	-386.16	40°07'47.880"N	104°46'40.130"W	10.91	
7405.00	48.040	180.680	7318.04	117.87	-117.54	-386.82	40°07'47.576"N	104°46'40.139"W	11.33	
7447.00	53.340	177.890	7344.64	150.34	-150.01	-386.38	40°07'47.256"N	104°46'40.133"W	13.62	
7490.00	58.160	175.760	7368.84	185.82	-185.49	-384.40	40°07'46.905"N	104°46'40.108"W	11.93	
7533.00	62.240	175.880	7390.20	223.02	-222.69	-381.68	40°07'46.537"N	104°46'40.073"W	9.49	
7575.00	67.400	176.900	7408.06	260.94	-260.61	-379.29	40°07'46.163"N	104°46'40.042"W	12.48	
7618.00	71.620	178.880	7423.11	301.18	-300.86	-377.82	40°07'45.765"N	104°46'40.023"W	10.72	
7660.00	72.850	179.350	7435.93	341.17	-340.85	-377.20	40°07'45.370"N	104°46'40.015"W	3.12	
7686.00	74.010	180.110	7443.34	366.09	-365.77	-377.09	40°07'45.123"N	104°46'40.014"W	5.27	
7725.00†	75.336	179.743	7453.65	403.70	-403.38	-377.04	40°07'44.752"N	104°46'40.013"W	3.52	7" Casing Point
7736.00	75.710	179.640	7456.40	414.35	-414.03	-376.98	40°07'44.646"N	104°46'40.012"W	3.52	
7779.00	78.260	180.240	7466.09	456.24	-455.92	-376.94	40°07'44.233"N	104°46'40.012"W	6.08	
7821.00	82.430	180.170	7473.13	497.64	-497.32	-377.09	40°07'43.823"N	104°46'40.014"W	9.93	
7864.00	86.270	179.680	7477.36	540.42	-540.10	-377.03	40°07'43.401"N	104°46'40.013"W	9.00	
7907.00	88.600	179.700	7479.28	583.37	-583.05	-376.80	40°07'42.976"N	104°46'40.010"W	5.42	
7949.00	90.340	179.810	7479.67	625.37	-625.05	-376.62	40°07'42.561"N	104°46'40.007"W	4.15	
8035.00	90.770	179.160	7478.84	711.36	-711.04	-375.84	40°07'41.711"N	104°46'39.998"W	0.91	
8120.00	90.000	179.990	7478.27	796.36	-796.03	-375.21	40°07'40.871"N	104°46'39.989"W	1.33	

Actual Wellpath Report

3D 15C-21HZ AWP

Page 4 of 6

REFERENCE WELLPATH IDENTIFICATION

Operator	KERR-MCGEE OIL & GAS ONSHORE LP	Slot	SLOT#25 3D 15C-21HZ (250'FNL & 1009'FEL, SEC.21)
Area	COLORADO	Well	3D 15C-21HZ
Field	WELD COUNTY (KERR MCGEE)	Wellbore	3D 15C-21HZ AWB
Facility	SEC.21-T2N-R66W		

WELLPATH DATA (133 stations)

MD [ft]	Inclination [°]	Azimuth [°]	TVD [ft]	Vert Sect [ft]	North [ft]	East [ft]	Latitude	Longitude	DLS [°/100ft]	Comments
8205.00	89.720	180.550	7478.48	881.35	-881.03	-375.61	40°07'40.032"N	104°46'39.995"W	0.74	
8290.00	90.580	180.830	7478.25	966.35	-966.03	-376.64	40°07'39.192"N	104°46'40.008"W	1.06	
8376.00	90.830	181.550	7477.20	1052.32	-1052.00	-378.42	40°07'38.342"N	104°46'40.031"W	0.89	
8461.00	89.930	180.880	7476.63	1137.30	-1136.98	-380.23	40°07'37.502"N	104°46'40.054"W	1.32	
8546.00	90.580	181.670	7476.25	1222.28	-1221.95	-382.12	40°07'36.662"N	104°46'40.078"W	1.20	
8632.00	90.300	181.660	7475.59	1308.24	-1307.92	-384.62	40°07'35.813"N	104°46'40.110"W	0.33	
8717.00	90.300	180.560	7475.15	1393.23	-1392.90	-386.26	40°07'34.973"N	104°46'40.132"W	1.29	
8802.00	89.500	180.010	7475.30	1478.23	-1477.90	-386.69	40°07'34.133"N	104°46'40.137"W	1.14	
8887.00	89.360	177.900	7476.14	1563.20	-1562.87	-385.14	40°07'33.294"N	104°46'40.117"W	2.49	
8972.00	90.240	178.990	7476.44	1648.16	-1647.84	-382.83	40°07'32.454"N	104°46'40.087"W	1.65	
9057.00	90.270	178.180	7476.06	1733.14	-1732.81	-380.73	40°07'31.614"N	104°46'40.060"W	0.95	
9143.00	90.180	178.280	7475.72	1819.09	-1818.77	-378.07	40°07'30.765"N	104°46'40.026"W	0.16	
9228.00	89.840	177.930	7475.71	1904.04	-1903.72	-375.26	40°07'29.925"N	104°46'39.990"W	0.57	
9313.00	90.210	178.490	7475.67	1989.00	-1988.68	-372.61	40°07'29.086"N	104°46'39.956"W	0.79	
9399.00	90.400	179.520	7475.21	2074.98	-2074.66	-371.11	40°07'28.236"N	104°46'39.936"W	1.22	
9482.00	89.280	177.820	7475.45	2157.95	-2157.64	-369.19	40°07'27.416"N	104°46'39.912"W	2.45	
9567.00	89.690	179.470	7476.21	2242.92	-2242.61	-367.18	40°07'26.576"N	104°46'39.886"W	2.00	
9653.00	90.580	180.670	7476.01	2328.92	-2328.60	-367.28	40°07'25.726"N	104°46'39.887"W	1.74	
9738.00	89.810	179.780	7475.72	2413.92	-2413.60	-367.62	40°07'24.887"N	104°46'39.891"W	1.38	
9823.00	89.690	181.500	7476.09	2498.91	-2498.59	-368.57	40°07'24.047"N	104°46'39.903"W	2.03	
9908.00	89.010	180.220	7477.05	2583.89	-2583.58	-369.84	40°07'23.207"N	104°46'39.920"W	1.71	
9993.00	89.960	181.270	7477.82	2668.88	-2668.56	-370.95	40°07'22.367"N	104°46'39.934"W	1.67	
10079.00	90.120	181.660	7477.76	2754.85	-2754.53	-373.15	40°07'21.517"N	104°46'39.962"W	0.49	
10164.00	90.730	181.560	7477.13	2839.82	-2839.50	-375.53	40°07'20.678"N	104°46'39.993"W	0.73	
10249.00	89.840	180.340	7476.70	2924.80	-2924.48	-376.94	40°07'19.838"N	104°46'40.011"W	1.78	
10334.00	90.950	180.320	7476.12	3009.80	-3009.48	-377.43	40°07'18.998"N	104°46'40.018"W	1.31	
10420.00	90.870	180.420	7474.75	3095.79	-3095.47	-377.99	40°07'18.148"N	104°46'40.025"W	0.15	
10505.00	90.580	180.120	7473.68	3180.78	-3180.46	-378.39	40°07'17.308"N	104°46'40.030"W	0.49	
10590.00	90.430	180.260	7472.93	3265.78	-3265.45	-378.67	40°07'16.468"N	104°46'40.033"W	0.24	
10675.00	90.430	180.450	7472.29	3350.77	-3350.45	-379.20	40°07'15.628"N	104°46'40.040"W	0.22	
10761.00	90.430	180.440	7471.64	3436.77	-3436.44	-379.87	40°07'14.779"N	104°46'40.049"W	0.01	
10931.00	89.690	179.180	7471.47	3606.76	-3606.44	-379.30	40°07'13.099"N	104°46'40.041"W	0.86	
11016.00	89.690	179.210	7471.93	3691.75	-3691.43	-378.11	40°07'12.259"N	104°46'40.026"W	0.04	
11187.00	89.560	178.360	7473.04	3862.70	-3862.39	-374.48	40°07'10.569"N	104°46'39.979"W	0.50	
11272.00	88.920	178.220	7474.17	3947.66	-3947.34	-371.95	40°07'09.730"N	104°46'39.947"W	0.77	
11357.00	90.150	177.770	7474.86	4032.60	-4032.28	-368.97	40°07'08.891"N	104°46'39.908"W	1.54	
11443.00	90.740	178.300	7474.19	4118.54	-4118.23	-366.02	40°07'08.041"N	104°46'39.870"W	0.92	
11528.00	90.370	179.660	7473.37	4203.52	-4203.21	-364.51	40°07'07.201"N	104°46'39.851"W	1.66	
11613.00	90.670	179.890	7472.60	4288.52	-4288.21	-364.18	40°07'06.361"N	104°46'39.847"W	0.44	
11698.00	90.270	180.560	7471.90	4373.51	-4373.20	-364.51	40°07'05.522"N	104°46'39.851"W	0.92	
11783.00	88.820	178.500	7472.58	4458.50	-4458.19	-363.81	40°07'04.682"N	104°46'39.842"W	2.96	
11818.00	89.620	180.110	7473.05	4493.49	-4493.18	-363.39	40°07'04.336"N	104°46'39.836"W	5.14	Last BHI MWD+IFR Surveys
11871.00	89.620	180.110	7473.41	4546.49	-4546.18	-363.49	40°07'03.812"N	104°46'39.838"W	0.00	Projection to Bit

Actual Wellpath Report

3D 15C-21HZ AWP

Page 5 of 6

REFERENCE WELLPATH IDENTIFICATION			
Operator	KERR-MCGEE OIL & GAS ONSHORE LP	Slot	SLOT#25 3D 15C-21HZ (250'FNL & 1009'FEL, SEC.21)
Area	COLORADO	Well	3D 15C-21HZ
Field	WELD COUNTY (KERR MCGEE)	Wellbore	3D 15C-21HZ AWB
Facility	SEC.21-T2N-R66W		

HOLE & CASING SECTIONS - Ref Wellbore: 3D 15C-21HZ AWB Ref Wellpath: 3D 15C-21HZ AWP									
String/Diameter	Start MD [ft]	End MD [ft]	Interval [ft]	Start TVD [ft]	End TVD [ft]	Start N/S [ft]	Start E/W [ft]	End N/S [ft]	End E/W [ft]
13.5in Open Hole	17.00	1057.00	1040.00	17.00	1056.99	0.00	0.00	1.46	0.84
9.625in Casing Surface	17.00	1047.00	1030.00	17.00	1046.99	0.00	0.00	1.42	0.81
8.75in Open Hole	1057.00	7735.00	6678.00	1056.99	7456.16	1.46	0.84	-413.06	-376.99
7in Casing Intermediate	17.00	7725.00	7708.00	17.00	7453.65	0.00	0.00	-403.38	-377.04
6.125in Open Hole	7735.00	11871.00	4136.00	7456.16	7473.41	-413.06	-376.99	-4546.18	-363.49

TARGETS									
Name	MD [ft]	TVD [ft]	North [ft]	East [ft]	Grid East [US ft]	Grid North [US ft]	Latitude	Longitude	Shape
3D 15C-21HZ LANDBOX		0.00	0.00	0.00	3202320.61	1291102.90	40°07'48.738"N	104°46'35.159"W	polygon
SEC.21-T2N-R66W HARDLINES (460' SETBACKS)		0.00	0.40	60.12	3202380.72	1291103.80	40°07'48.742"N	104°46'34.385"W	polygon
SEC.21-T2N-R66W SECTION LINES		0.00	0.40	60.12	3202380.72	1291103.80	40°07'48.742"N	104°46'34.385"W	polygon
3D 15C-21HZ BHL (460'FSL & 1400'FEL, SEC.21) REV-2		7476.00	-4572.26	-395.57	3201962.38	1286527.76	40°07'03.554"N	104°46'40.251"W	point
3D 15C-21HZ BHL ON PLAT (460'FSL & 1510'FEL, SEC.21) REV-1		7476.00	-4572.26	-505.37	3201852.58	1286526.87	40°07'03.554"N	104°46'41.664"W	point

WELLPATH COMPOSITION - Ref Wellbore: 3D 15C-21HZ AWB Ref Wellpath: 3D 15C-21HZ AWP				
Start MD [ft]	End MD [ft]	Positional Uncertainty Model	Log Name/Comment	Wellbore
17.00	963.00	Generic gyro - continuous (Standard)	MS ENERGY SERVICES GYRO SURVEYS <117-963>	3D 15C-21HZ AWB
963.00	7686.00	NaviTrak (MAGCORR,IFR)	BHI MWD+IFR SURVEYS 8 3/4" HOLE <1069-7686>	3D 15C-21HZ AWB
7686.00	11818.00	NaviTrak (MAGCORR,IFR)	BHI MWD+IFR SURVEYS 6 1/8" HOLE <7736-11818>	3D 15C-21HZ AWB
11818.00	11871.00	Blind Drilling (std)	Projection to bit	3D 15C-21HZ AWB

Actual Wellpath Report

3D 15C-21HZ AWP

Page 6 of 6

REFERENCE WELLPATH IDENTIFICATION			
Operator	KERR-MCGEE OIL & GAS ONSHORE LP	Slot	SLOT#25 3D 15C-21HZ (250'FNL & 1009'FEL, SEC.21)
Area	COLORADO	Well	3D 15C-21HZ
Field	WELD COUNTY (KERR MCGEE)	Wellbore	3D 15C-21HZ AWB
Facility	SEC.21-T2N-R66W		

WELLPATH COMMENTS				
MD [ft]	Inclination [°]	Azimuth [°]	TVD [ft]	Comment
17.00	0.000	120.530	17.00	Tie-On
117.00	0.310	120.530	117.00	Begin GYRO Surveys
963.00	0.260	60.960	962.99	Tie-Into GYRO Surveys
1069.00	0.260	26.170	1068.99	Begin BHI MWD+IFR Surveys
7725.00	75.336	179.743	7453.65	7" Casing Point
11818.00	89.620	180.110	7473.05	Last BHI MWD+IFR Surveys
11871.00	89.620	180.110	7473.41	Projection to Bit