



Scale: 5" / 100'
Measured Depth Log

Well Name 051233810000 3D 15C-21HZ

Location SEC 21 T2N R66W

State CO

County WELD

Country USA

Rig Number XTREME8

API Number 051233810000

AFE # 2086752

Region WATTENBERG

Field WELD

Spud Date 12/13/2013

Drilling Completed 12/18/2013

Surface Coordinates 250' FNL, 1009' FEL

Bottom Hole Coordinates 460' FSL, 1400' FEL

Ground Elevation 0

K.B. Elevation 5006'

Logged Interval 6936' To 11871'

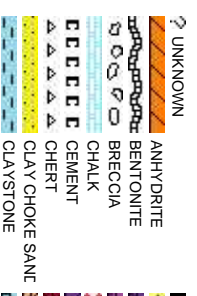
Total Depth 11871'

Formation CODELL

Type of Drilling Fluid FW LSND

Company Anadarko Petro
Address 1099 18th, Suite

Name Josh Garrett
Company Anadarko
Address 1099 18th, Suite



Operator

leum Company

1800 Denver, CO 80202

Geologist

1800 Denver, CO 80202

Rock Types

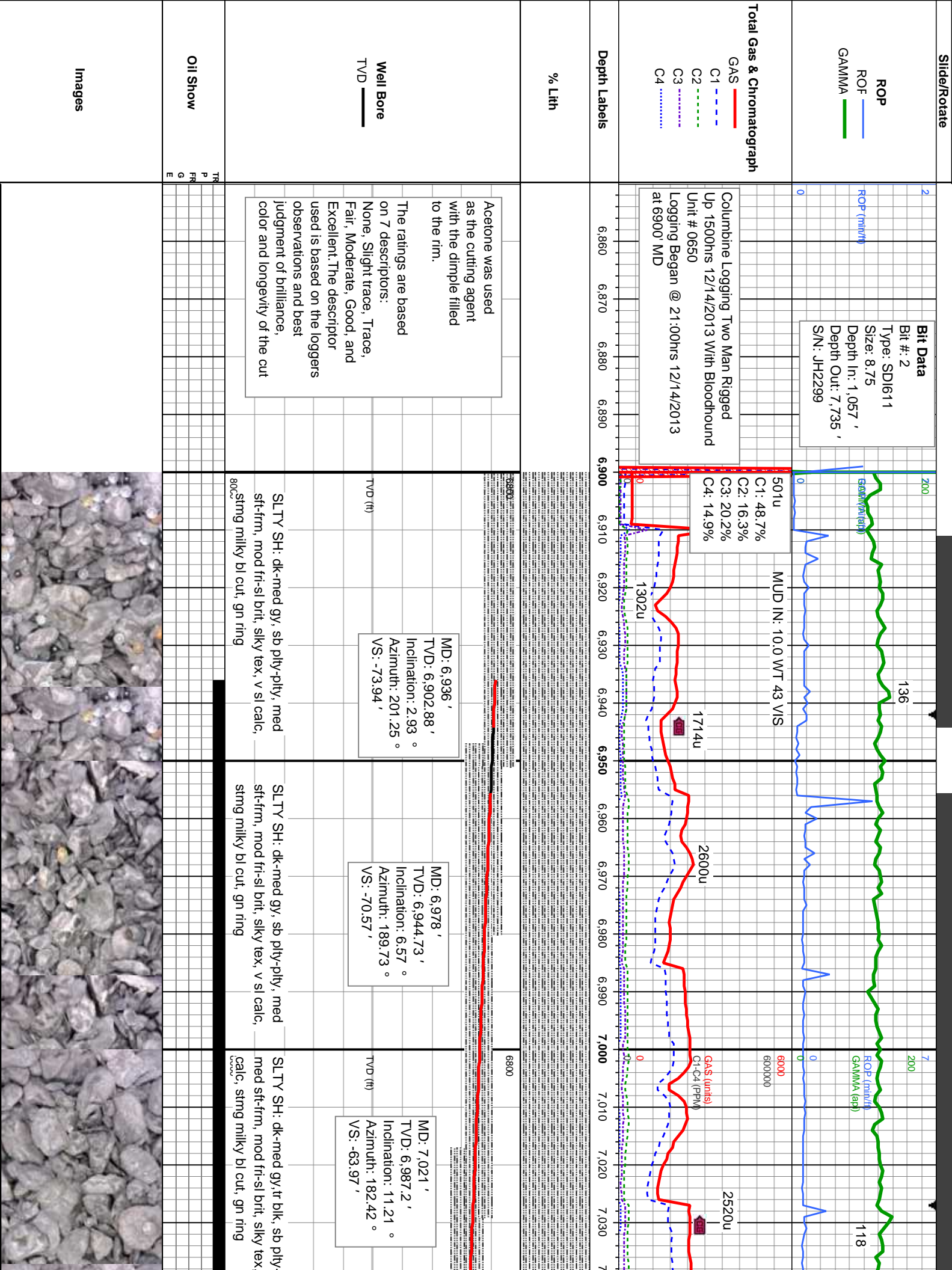
| | | |
|----------------------|------------------|-----------------|
| CONGLOMERATE | MARLSTONE | SHALY SANDSTONE |
| DOLOMITE | METAMORPHIC | SHALY SILTSTONE |
| DOLOMITIC LIMESTONE | NO SAMPLE | SILTY SHALE |
| GRANITE | SALT | SILTSTONE |
| GYPSUM | SANDSTONE | TILL |
| IGNEOUS | SALT-PEPPER SANI | TUFF |
| SIDERITE or LIMONITE | SHALE | WELDED TUFF |
| LIMESTONE | SHALE COLORED | |
| | SHALE GRAY | |

Accessories

| | | | |
|----------------|----------------------|--------------------------|-----------------------|
| Fossils | GASTROPOD | ARGILLITE GRAIN | HEAVY MINERAL |
| INOCERAMUS | B BENTONITE | K KAOLIN | ANHYDRITE STRINGER |
| ALGAE | O OOLITE | BIT BITUMENOUS SUBSTANCE | B BENTONITE STRINGER |
| AMPHIPORA | O OSTRACOD | B BRECCIA FRAGMENTS | COAL STRINGER |
| BELEMNITE | P PELECYPOD | C CALCAREOUS | DOLOMITE STRINGER |
| BIOCLASTIC | P PELLET | C CARBONACEOUS FLAKES | G GYPSUM STRINGER |
| BRACHIOPOD | P PISOLITE | CHT CHERT | LIMESTONE STRINGER |
| BRYOZOA | P PLANT REMAINS | CHT CHERT | MARLSTONE (CALC) STRG |
| CEPHALOPOD | S PLANT SPORES | C COAL - THIN BEDS | MARLSTONE (DOL) STRG |
| CORAL | S SCAPHOPOD | D DOLOMITIC | SANDSTONE STRINGER |
| CRINOID | S STROMATOPOROID | F FELDSPAR | SHALE STRINGER |
| ECHINOID | F FERRUGINOUS PELLET | F FERRUGINOUS | S SILTY |
| FISH | Minerals | T TUFFACEOUS | |
| FORAMINIFERA | A ANHYDRITIC | G GLAUCONITE | |
| F FOSSIL | A ARGILLACEOUS | G GYPSIFEROUS | Stringer |

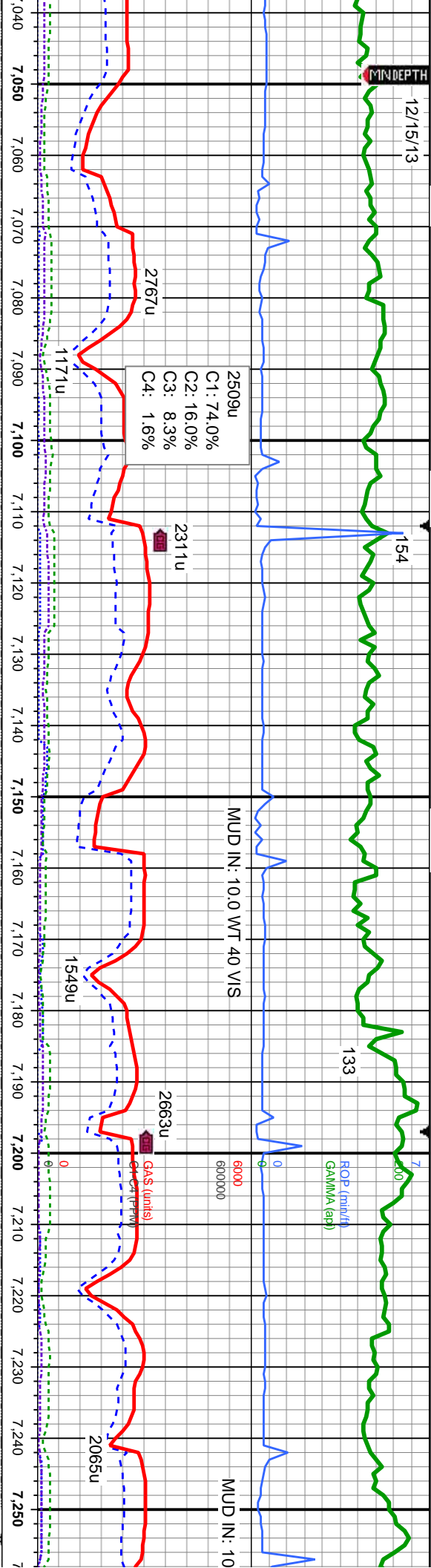
Other Symbols

| | | | | |
|---------------------|-------------------------|-------------------------|------------------------|-----------------|
| Oil Show | P PINPOINT | DST INTERVAL | WIRELINE TESTED - LEFT | E EARTHY |
| V VUGGY | FAULT | WIRELINE TESTED - RT | F FINELY XLN | |
| D DEAD | FORMATION TOP | DRILL STEM TEST | G GRAINSTONE | |
| E EVEN | GAS SHOW | MN DEPTH | L LITHOGRAPHIC | |
| Q QUESTIONABLE | BIT | OIL SHOW | M MICRO XLN | |
| S SPOTTED STAINING | C CONNECTION (UP) | MN DEPTH UP | M MUDSTONE | |
| C CONNECTION (DOWN) | MN DEPTH (DOWN) | A ANGULAR | P PACKSTONE | |
| Porosity | C CONNECTION GAS | N NORMAL FAULT | R ROUNDED | W WACKESTONE |
| E EARTHY | C CONNECTION GAS (LEFT) | O OVERTURNED STRATA | S SUBANG | |
| F FENESTRAL | T TRIP GAS | R REVERSE FAULT | S SUBRND | |
| F FRACTURE | T TRIP GAS (LEFT) | C CASING | | Textures |
| I INTERCRYSTALLINE | D DOWN TIME GAS | S SIDEWALL CORE (LEFT) | | P POOR |
| I INTERCRYSTALLINE | D DOWN TIME GAS (LEFT) | S SIDEWALL CORE (RIGHT) | | M MODERATE |
| M MOLDIC | C CORE - LOST | S SLIDE | | W WELL |
| O ORGANIC | C CORE - RECOVERED | S SURVEY | | C CRYPTOXLN |



12/15/13

MINDEPTH



MD: 7,064 '
TVD: 7,029.05 '
Inclination: 15.29 °
Azimuth: 185.1 °
VS: -54.14 '

SLTY SH: dk-med gy, sb pty-pty, med
sft-firm, mod fri-sl brt, silky tex, v sl calc,
stimg milky bl cut, gn ring

MD: 7,106 '
TVD: 7,069.21 '
Inclination: 18.68 °
Azimuth: 183.71 °
VS: -41.91 '

SLTY SH: dk-med gy, sb pty-pty, med
sft-firm, mod fri-sl brt, silky tex, v sl calc,
fast stimg milky bl cut, bl ring

MD: 7,149 '
TVD: 7,109.47 '
Inclination: 22.4 °
Azimuth: 181.76 °
VS: -26.84 '

SLTY SH: dk-med gy, sb pty-pty, med
sft-firm, mod fri-sl brt, silky tex, v sl calc,
fast stimg milky bl cut, bl ring

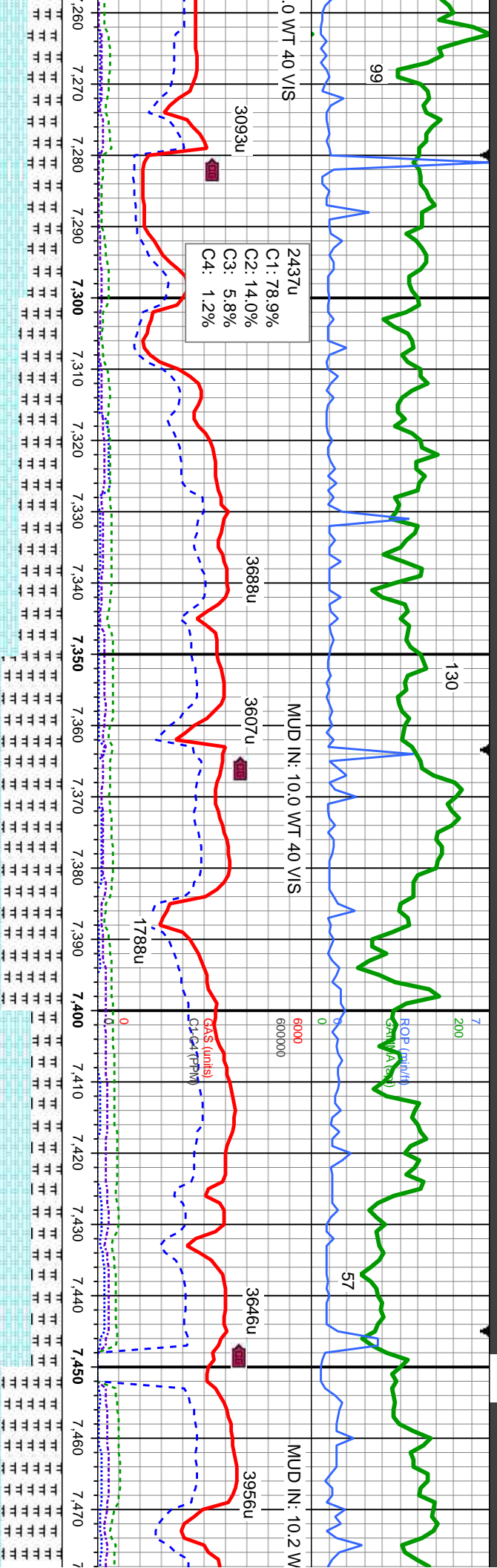
MD: 7,192 '
TVD: 7,148.64 '
Inclination: 26.27 °
Azimuth: 181.86 °
VS: -9.13 '

SLTY SH: dk-med gy, sb pty-pty, med
sft-firm, mod fri-sl brt, silky tex, v sl calc,
fast stimg milky bl cut, bl ring

MD: 7,234 '
TVD: 7,185.57 '
Inclination: 30.59 °
Azimuth: 182.05 °
VS: 10.85 '

SLTY SH: dk-med gy, sb pty-pty, med
sft-firm, mod fri-sl brt, silky tex, v sl calc,
fast stimg milky bl cut, bl ring





Niobrara A:
7,268' MD
7,214' TVD

Niobrara B:
7,303' MD
7,243' TVD

MD: 7,320 '
TVD: 7,256.27 '
Inclination: 38.67 °
Azimuth: 182.31 °
VS: 59.65 '

MD: 7,362 '
TVD: 7,287.98 '
Inclination: 43.24 °
Azimuth: 181.84 °
VS: 87.15 '

Niobrara C:
7,394' MD
7,311' TVD

CHK:lt-med gy, occ dk gy, sb blk, sft, mot-
rthy-wxy tex, v calc; MRLST: med-dk gy, sb
blk, med sft-firm, mot-sily tex, calc, fast
stimg milky bl cut, bri bl ring

MRLST: med-dk gy, sb bl
mot-sily tex, calc CHK:lt-
sb blk, sft, mot-rthy-wxy
stimg milky bl cut, bri bl ring

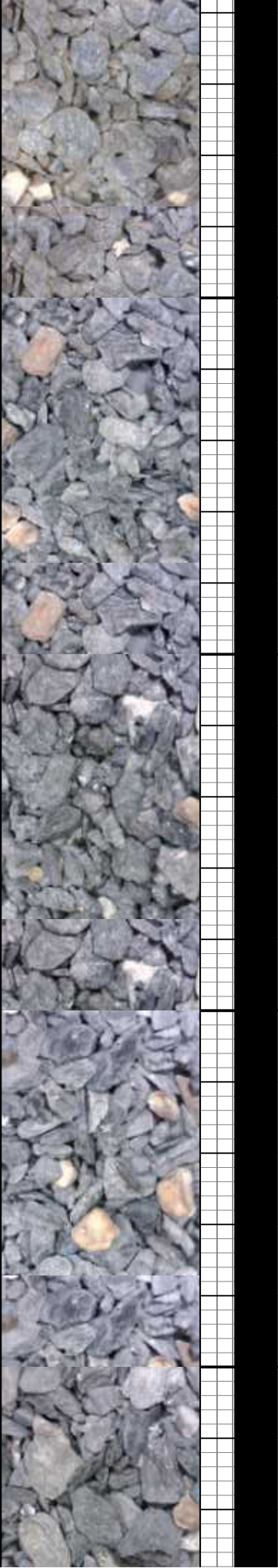
SH: dk-med gy, sb ply-pty, mod
mod fri-sl brit, sily tex; CHK:lt-med
dk gy, sb blk, sft, mot-rthy-wxy tex,
MRLST: med-dk gy, sb blk, med
mot-sily tex, calc, tr pyr, scat bent,
stimg milky bl cut, bri bl ring

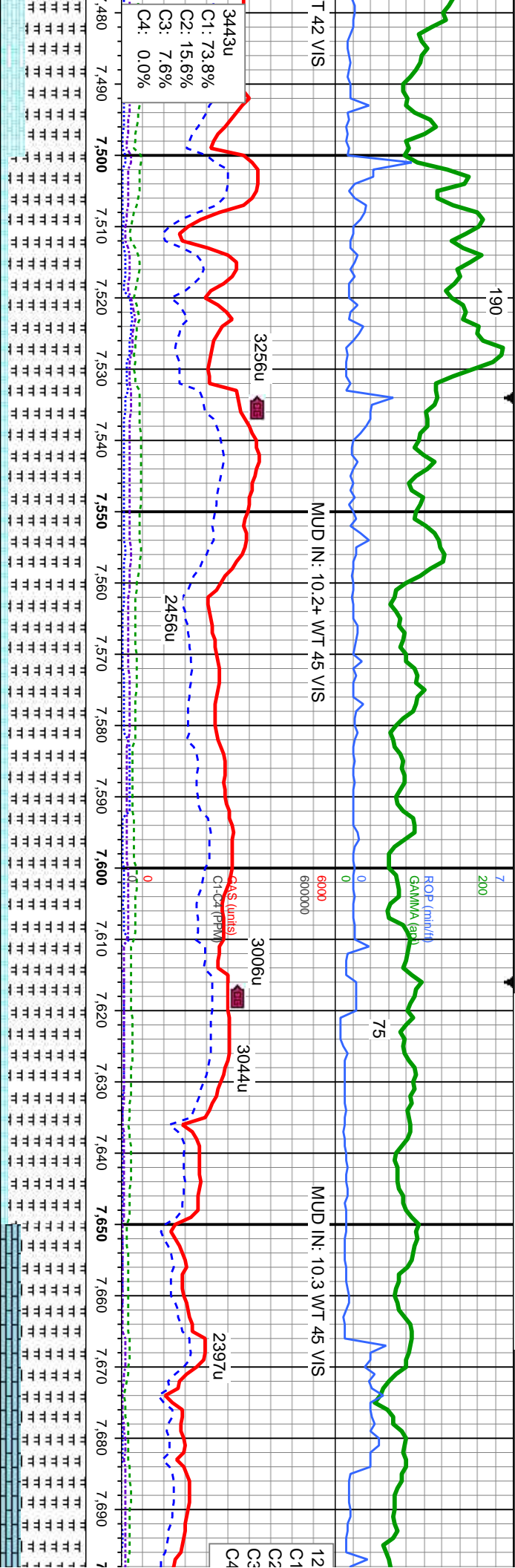
CHK:lt-med gy, occ dk gy, sb blk, sft, mot-
rthy-wxy tex, v calc; MRLST: med-dk gy, sb
blk, med sft-firm, mot-sily tex, calc, v tr pyr,
fast stimg milky bl cut, bri bl ring

MRLST: med-dk gy, sb blk, med sft-firm,
mot-sily tex, calc CHK:lt-med gy, occ dk gy,
sb blk, sft, mot-rthy-wxy tex, v calc, mod
bent, fast stimg milky bl cut, bri bl ring

MD: 7,405 '
TVD: 7,318.04 '
Inclination: 48.04 °
Azimuth: 180.68 °
VS: 117.88 '

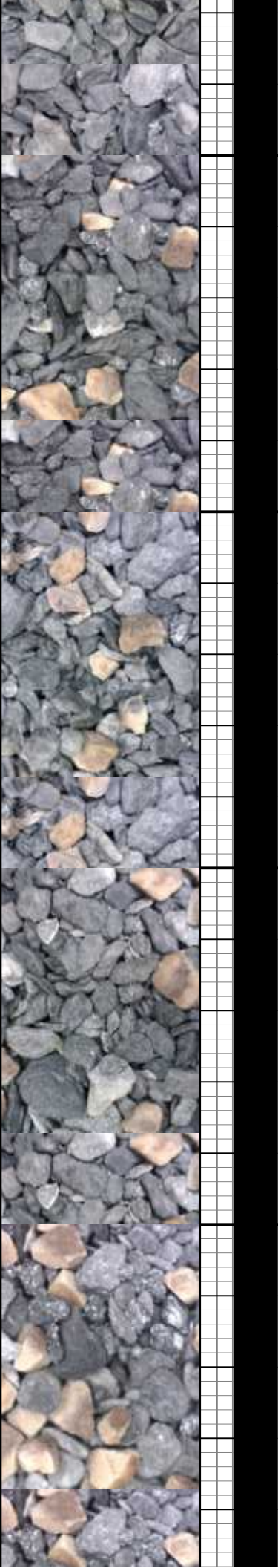
MD: 7,447 '
TVD: 7,344.64 '
Inclination: 53.34 °
Azimuth: 177.89 °
VS: 150.35 '





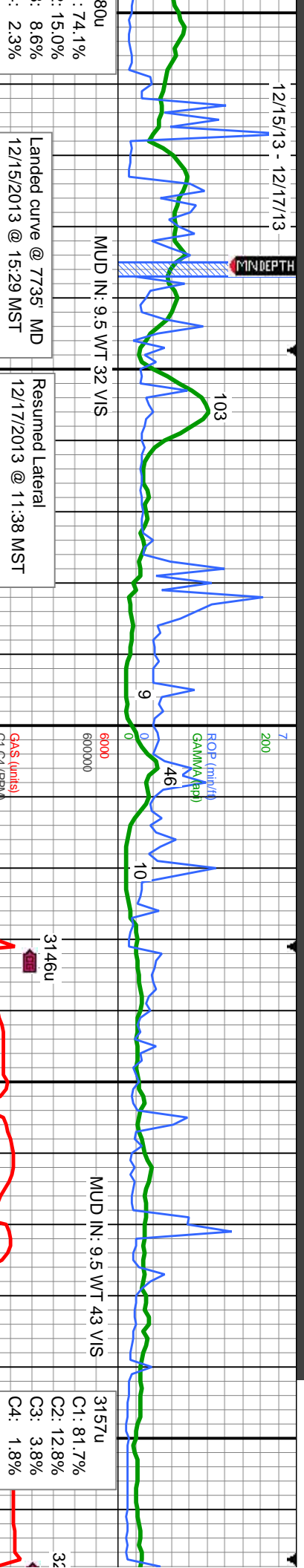
| | | | | |
|---|--|---|--|---|
| Ky, med sft-frm, med gy, occ dk gy, tex, v calc, fast | MRLST: med-dk gy, sb blk, med sft-frm, mot-sily tex, calc CHK:lt-med gy, occ dk gy, sb blk, sft, mot-rthy-wxy tex, v calc, fast stmg milky bl cut, bri bl ring | MRLST: med-dk gy, sb blk, med sft-frm, mot-sily tex, calc; LS: wh-lt tan, offwht-crm, v sft-sft, sb ply-sb blk, v calc CHK:lt-med gy, occ dk gy, sb blk, sft, mot-rthy-wxy tex, v calc, fast stmg milky bl cut, bri bl ring | 680 LS: wh-lt tan, offwht-crm, v sft-sft, sb ply-sb blk, v calc; MRLST: med-dk gy, sb blk, med sft-frm, mot-sily tex, calc, tr chk, tr bent, fast stmg milky bl cut, bri bl ring | MRLST: med-dk gy, sb blk, med sft-frm, mot-sily tex, calc; LS: wh-lt tan, offwht-crm, v sft-sft, sb ply-sb blk, some chk, fast stmg milky bl cut, bri bl ring |
| | | | | |

| | | | | | |
|---|--|---|---|---|--|
| MD: 7,490 ' TVD: 7,368.83 ' Inclination: 58.16 ° Azimuth: 175.76 ° VS: 185.83 ' | MD: 7,533 ' TVD: 7,390.2 ' Inclination: 62.24 ° Azimuth: 175.88 ° VS: 223.03 ' | MD: 7,575 ' TVD: 7,408.06 ' Inclination: 67.4 ° Azimuth: 176.9 ° VS: 260.95 ' | MD: 7,618 ' TVD: 7,423.11 ' Inclination: 71.62 ° Azimuth: 178.88 ° VS: 301.19 ' | MD: 7,660 ' TVD: 7,435.93 ' Inclination: 72.85 ° Azimuth: 179.35 ° VS: 341.18 ' | MD: 7,686 ' TVD: 7,443.34 ' Inclination: 74.01 ° Azimuth: 180.11 ° VS: 366.1 ' |
|---|--|---|---|---|--|



12/15/13 - 12/17/13

MINDEPTH



LS: wh- lt tan, offwht-crm, v sft-sft, sb
pfty-sb blkly, v calc; MRLST: med-dk gy,
sb blkly, med sft-firm, mot- silty tex, calc,
fast stmg milky bl cut, bri bl ring

Ft. Hays
7,760' MD
7,462' TVD

MD: 7,779' TVD: 7,466.08'
Inclination: 78.26°
Azimuth: 180.24°
VS: 456.25'

MD: 7,821' TVD: 7,473.13'
Inclination: 82.43°
Azimuth: 180.17°
VS: 497.65'

MD: 7,864' TVD: 7,477.36'
Inclination: 86.27°
Azimuth: 179.68°
VS: 540.43'

MD: 7,907' TVD: 7,479.28'
Inclination: 88.6°
Azimuth: 179.7°
VS: 583.38'

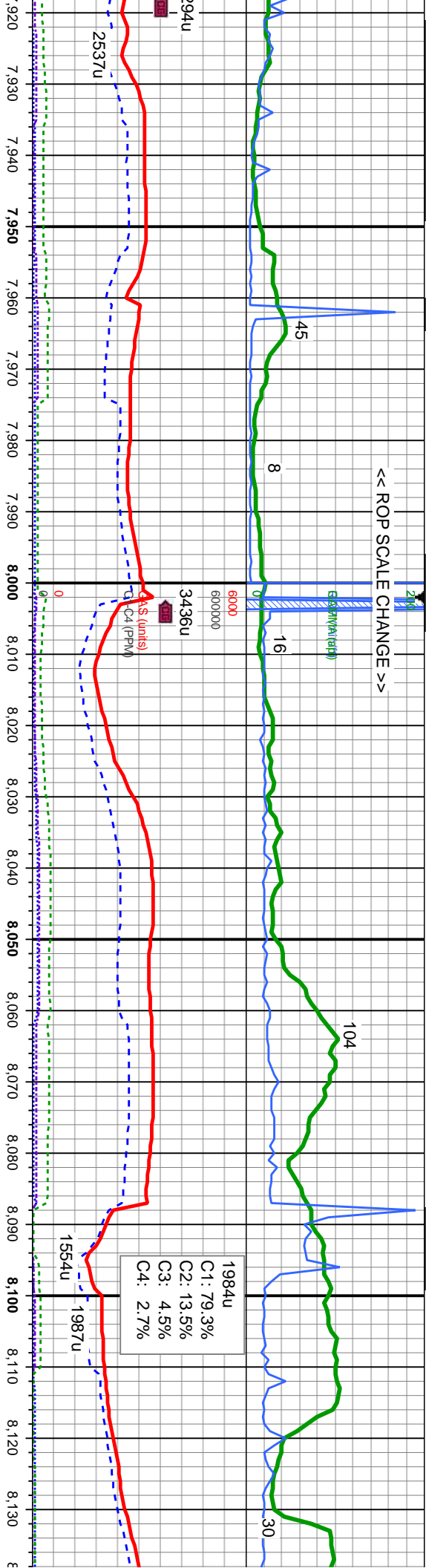
MD: 7,736' TVD: 7,456.4'
Inclination: 75.71°
Azimuth: 179.64°
VS: 414.36'

LS: wh- lt tan, offwht-crm, v sft-sft,
pfty-sb pfty, v calc; MRLST: med-dk gy,
sb blkly, med sft-firm, mot- silty tex, calc,
slow stmg milky bl cut, bl ring

LS: wh- lt tan, offwht-crm, v sft-sft, pfty, occ
sb pfty, v calc; MRLST: med-dk gy, sb blkly,
med sft-firm, mot- silty tex, calc, slow stmg
milky bl cut, bl ring



<< ROP SCALE CHANGE >>



MD: 7,949 '
TVD: 7,479.67 '
Inclination: 90.34 °
Azimuth: 179.81 °
VS: 625.38 '

MD: 8,035 '
TVD: 7,478.84 '
Inclination: 90.77 °
Azimuth: 179.16 °
VS: 711.37 '

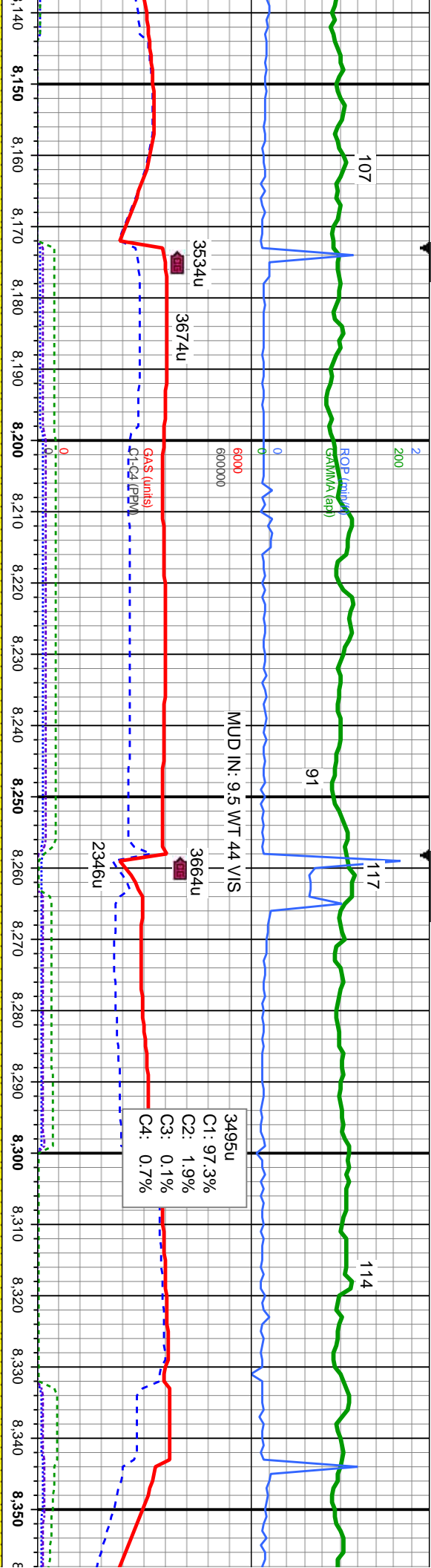
MD: 8,120 '
TVD: 7,478.27 '
Inclination: 90 °
Azimuth: 179.99 °
VS: 796.36 '

LS: wh- lt tan, offwh-orm, v sft-sft, pty, occ sb
pty, v calc, tr mrst, slow strng milky bl cut, bl
ring

LS: wh- lt tan, tr tan, offwh-orm, v sft-sft,
pty, occ sb pty, v calc, tr mrst, slow strng
milky bl cut, bl ring

SS: med -
calc, LS: w
pty-pty, c
ring





DELL
31' MD
8' TVD

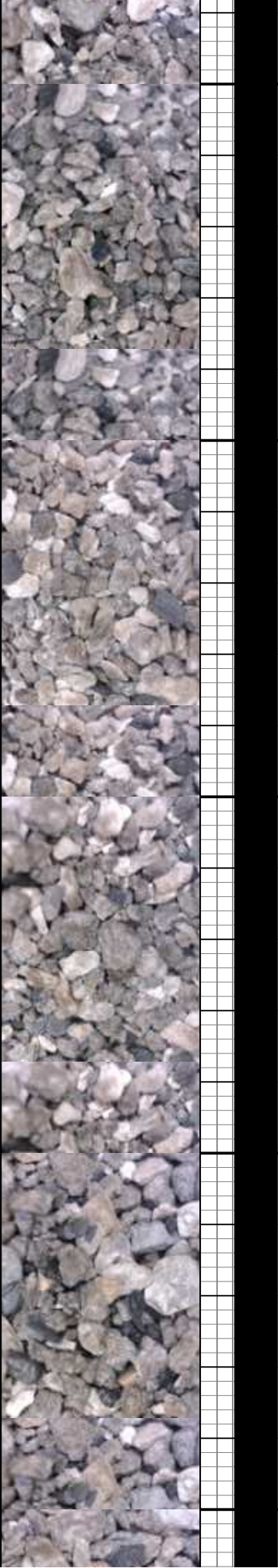
MD: 8,205 '
TVD: 7,478.48 '
Inclination: 89.72 °
Azimuth: 180.55 °
VS: 881.36 '

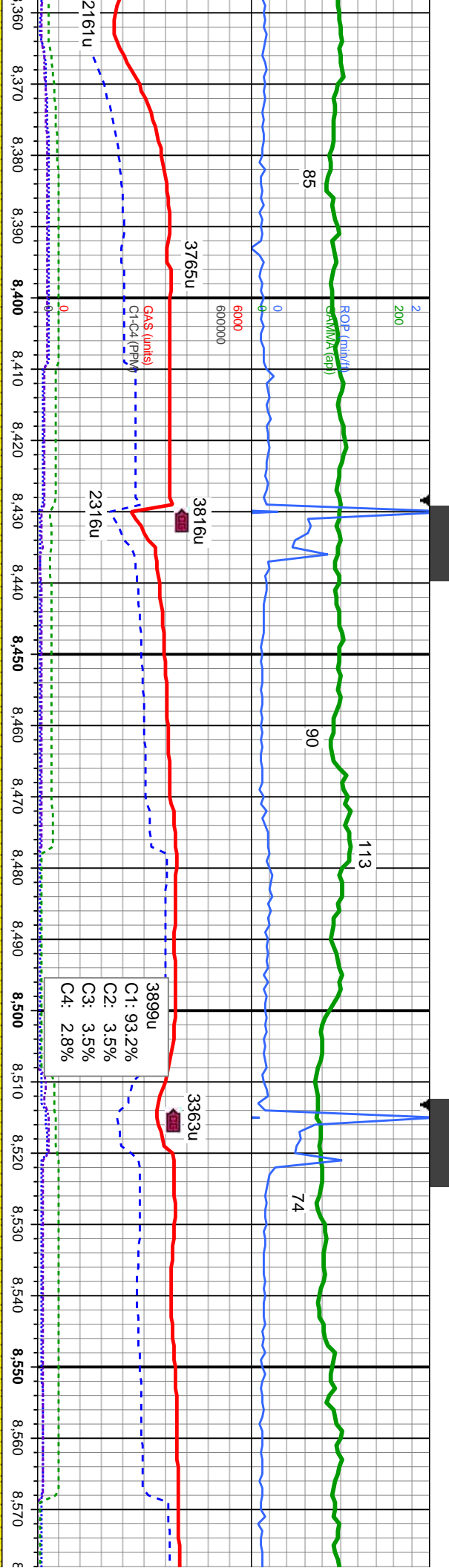
MD: 8,290 '
TVD: 7,478.25 '
Inclination: 90.58 °
Azimuth: 180.83 °
VS: 966.36 '

dk gy, hd, wrd, med-f gr, non - sl
h-ilty, offwht-crm, v sft-sft, sb
alc, slow string milky bl cut, bri bl

SS: med -dk gy, hd, wrd, med-f gr, non - sl calc;
LS: wh-ilty, offwht-crm, v sft-sft, sb pily-pily,
calc, slow string milky bl cut, bri bl ring

SS: med -dk gy, hd, wrd, med-f gr, non - sl calc;
calc; LS: wh-ilty, offwht-crm, v
pily-pily, calc, slow string milky





MD: 8,376 '
TVD: 7,477.2 '
Inclination: 90.83 °
Azimuth: 181.55 °
VS: 1,052.33 '

MD: 8,461 '
TVD: 7,476.63 '
Inclination: 89.93 °
Azimuth: 180.88 °
VS: 1,137.31 '

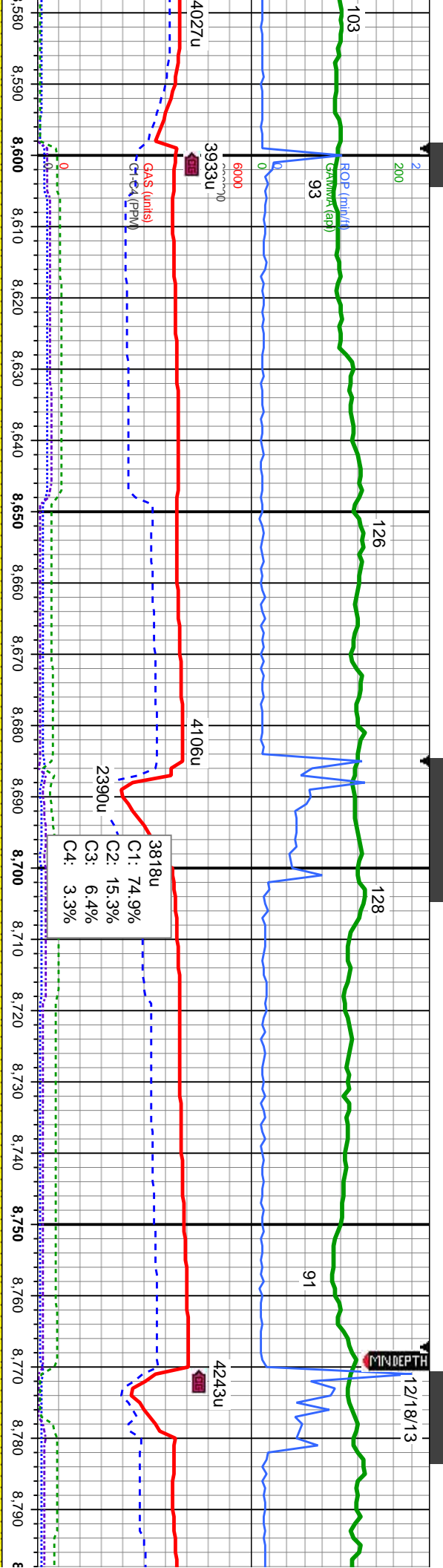
MD: 8,546 '
TVD: 7,476.25 '
Inclination: 90.58 °
Azimuth: 181.67 °
VS: 1,222.29 '

| Depth (ft) | VS (ft) | Log Description |
|---------------|---------|--|
| 8,360 - 8,400 | 8000 | vf gr, non - sl / sft-sft, sb bl cut, bri bl ring |
| 8,400 - 8,450 | | SS: med -dk gy, hd, wrd, med-vf gr, non - sl calc; LS: wh-ltgy, offwht-crm, v sft-sft, sb plty-plty, calc, slow string milky bl cut, bri bl ring |
| 8,450 - 8,500 | | |
| 8,500 - 8,550 | | SS: med -dk gy, hd, wrd, med-vf gr, non - sl calc; LS: wh-ltgy, offwht-crm, v sft-sft, sb plty-plty, calc, slow string milky bl cut, bri bl ring |
| 8,550 - 8,570 | | |



12/18/13

MINDEPTH



MD: 8,632 '
TVD: 7,475.59 '
Inclination: 90.3 °
Azimuth: 181.66 °
VS: 1,308.25 '

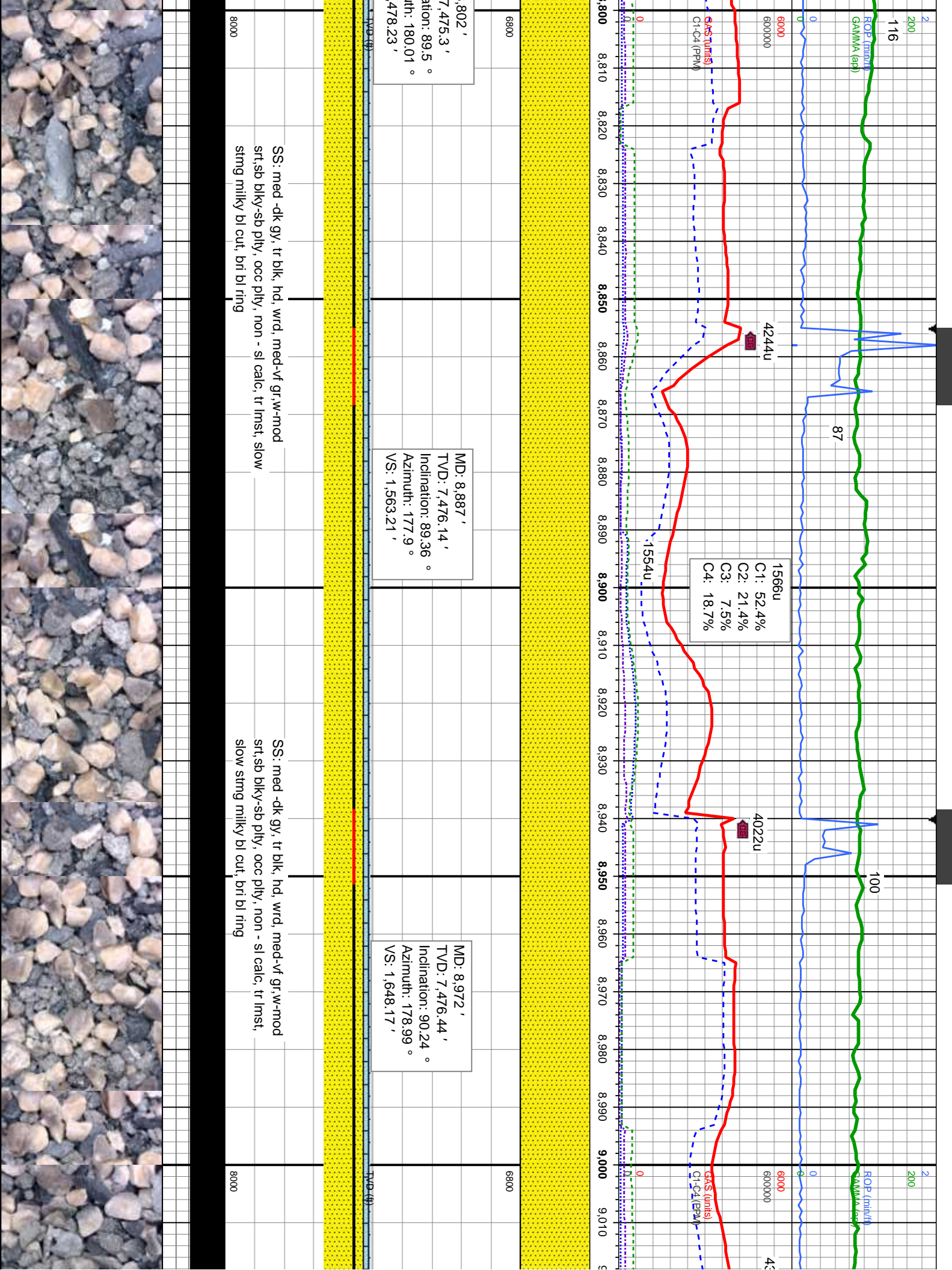
MD: 8,717 '
TVD: 7,475.15 '
Inclination: 90.3 °
Azimuth: 180.56 °
VS: 1,393.24 '

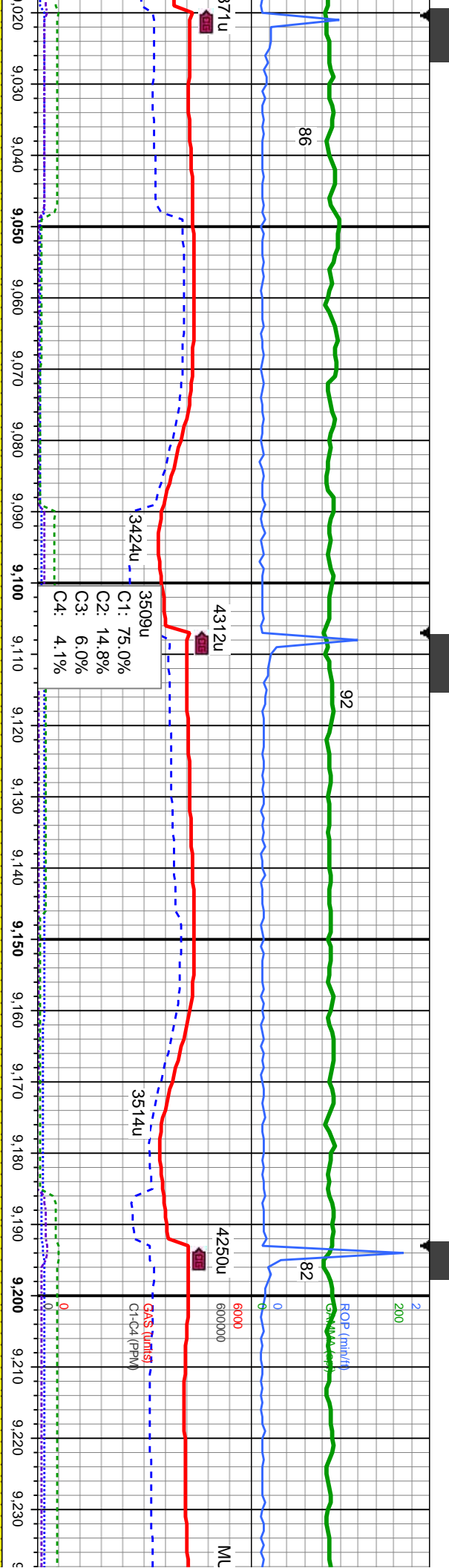
MD: 8
TVD:
Incline:
Azimu
VS: 1

SS: med -dk gy, tr blk, hd, wrd, med-vf gr, w
srt, sb blk-y-sb pty, occ pty, non - sl calc, tr
lmst, slow string milky bl cut, bri bl ring

SS: med -dk gy, tr blk, hd, wrd, med-vf
gr, w-mod srt, sb blk-y-sb pty, occ pty, non - sl
calc, tr lmst, slow string milky bl cut, bri bl ring







MD: 9,057 '
TVD: 7,476.06 '
Inclination: 9,027 °
Azimuth: 178.18 °
VS: 1733.15 '

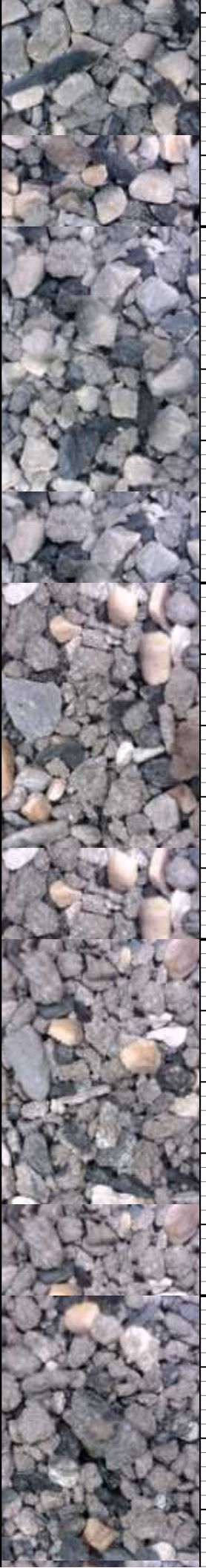
MD: 9,143 '
TVD: 7,475.72 '
Inclination: 90.18 °
Azimuth: 178.28 °
VS: 1819.10 '

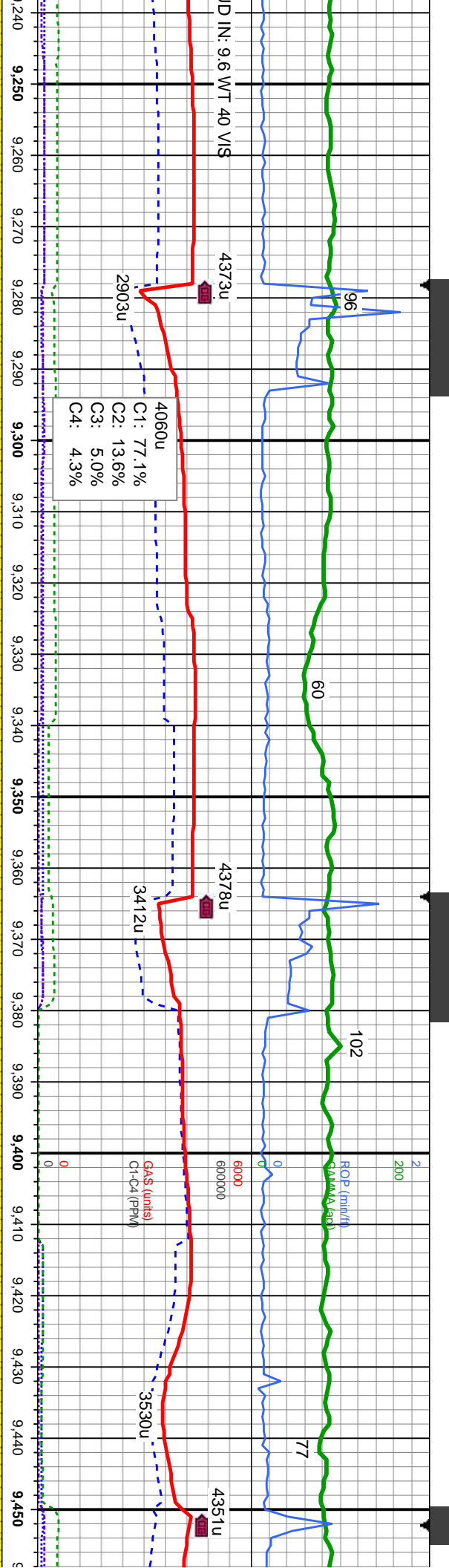
MD: 9,228 '
TVD: 7,475.71 '
Inclination: 89.84 °
Azimuth: 177.93 °
VS: 1904.05 '

SS: med -dk gy, tr blk, hd, wrd, med-vf gr, w-mod
srt, sb blk-y-sb pty, occ pty, non - sl calc, tr lmsl,
slow stmg milky bl cut, bri bl ring

SS: med -dk gy, tr blk, hd, wrd, med-vf gr, w-mod
srt, sb blk-y-sb pty, occ pty, non - sl calc, tr lmsl,
slow stmg milky bl cut, bri bl ring

SS: med -dk gy, tr blk, hd, wrd, med-vf gr, w-mod
srt, sb blk-y-sb pty, occ pty, non - sl calc, tr lmsl,
slow stmg milky bl cut, bri bl ring





MD: 9,313 '
TVD: 7,475.67 '
Inclination: 90.21 °
Azimuth: 178.49 °
VS: 1989.01 '

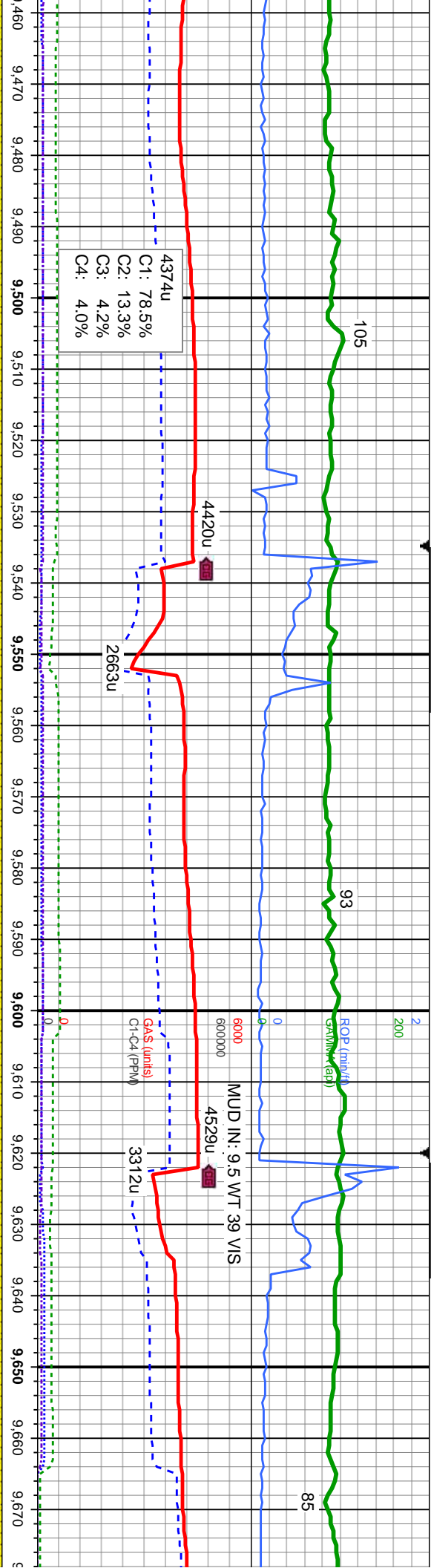
MD: 9,399 '
TVD: 7,475.21 '
Inclination: 90.4 °
Azimuth: 179.52 °
VS: 2074.99 '

tr blk, hd, wrd, med-vf gr, w-mod
occ pily, non - sl calc, tr lmsl,
bl cut, bri bl ring

SS: med -dk gy, tr blk, hd, wrd, med-vf gr, w-mod
srt, sb blk, sb pily, occ pily, non - sl calc, slow
stng milky bl cut, bri bl ring

SS: med -dk gy, tr blk, hd, wrd,
srt, sb blk, sb pily, occ pily, non
stng milky bl cut, bri bl ring





MD: 9,482 '
TVD: 7,475.11 '
Inclination: 89.28 °
Azimuth: 177.82 °
VS: 2157.96 '

MD: 9,567 '
TVD: 7,476.21 '
Inclination: 89.69 °
Azimuth: 179.47 °
VS: 2242.93 '

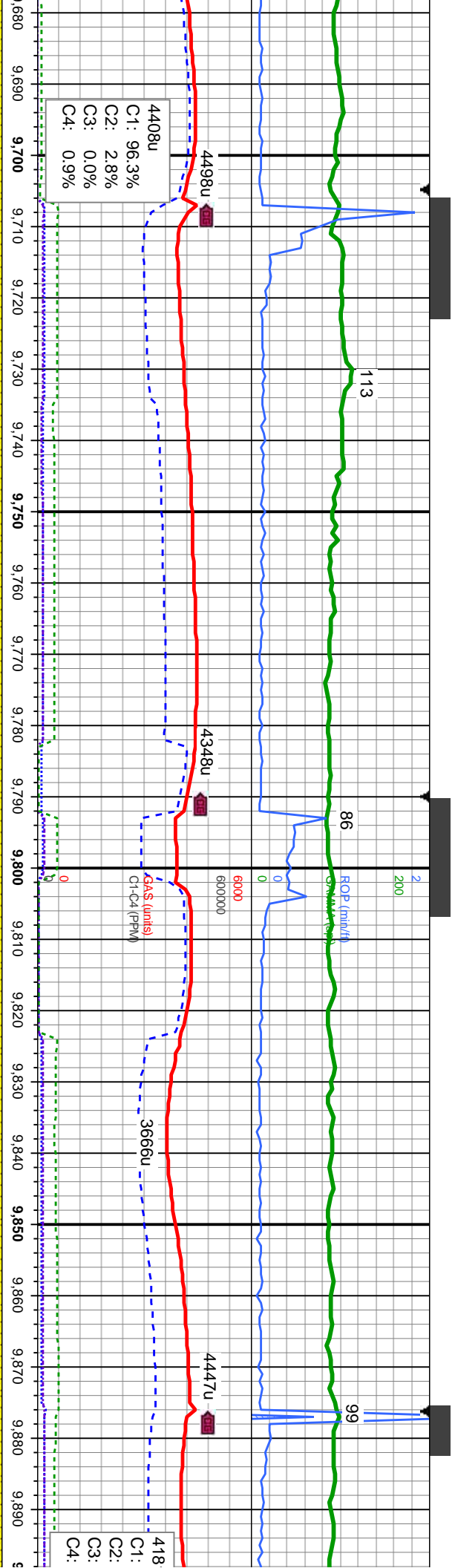
MD: 9,653 '
TVD: 7,476.01 '
Inclination: 90.58 °
Azimuth: 180.67 °
VS: 2328.93 '

med-vf gr, w-mod
- sl calc, slow

SS: med -dk gy, tr blk, hd, wrd, med-vf gr, w-mod
srt, sb blk, sb pty, occ pty, non - sl calc, slow
stmg milky bl cut, bri bl ring

SS: med -dk gy, tr blk, hd, wrd, med-vf gr, w-mod
srt, sb blk, sb pty, occ pty, non - sl calc, slow
stmg milky bl cut, bri bl ring





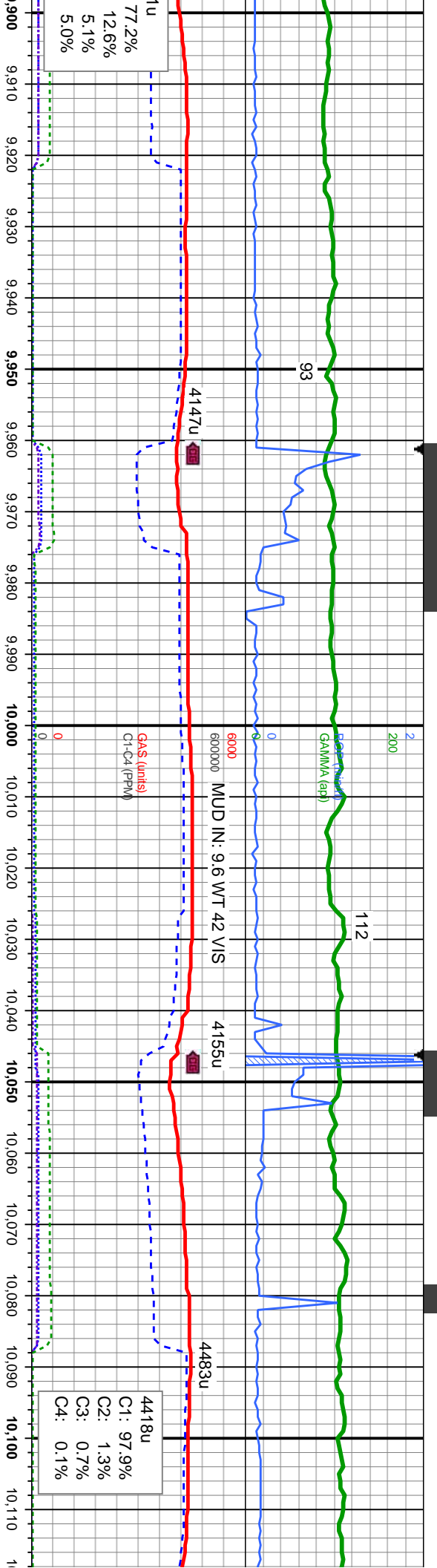
MD: 9,738 '
TVD: 7,475.72 '
Inclination: 89.81 °
Azimuth: 179.78 °
VS: 2413.92 '

MD: 9,823 '
TVD: 7,476.09 '
Inclination: 89.69 °
Azimuth: 181.5 °
VS: 2498.92 '

SS: med -dk gy, tr blk, hd, wrd, med-vf gr, w-mod
srt, sb blk-y-sb pty, occ pty, non - sl calc, slow stmg
milky bl cut, bri bl ring

SS: med -dk gy, tr blk, hd, wrd, med-vf gr, w-mod
srt, sb blk-y-sb pty, occ pty, non - sl calc, slow
stmg milky bl cut, bri bl ring





4418u
C1: 97.9%
C2: 1.3%
C3: 0.7%
C4: 0.1%

ID: 9,908 '
VD: 7,477.05 '
Inclination: 89.01 °
Azimuth: 180.22 °
S: 2583.90 '

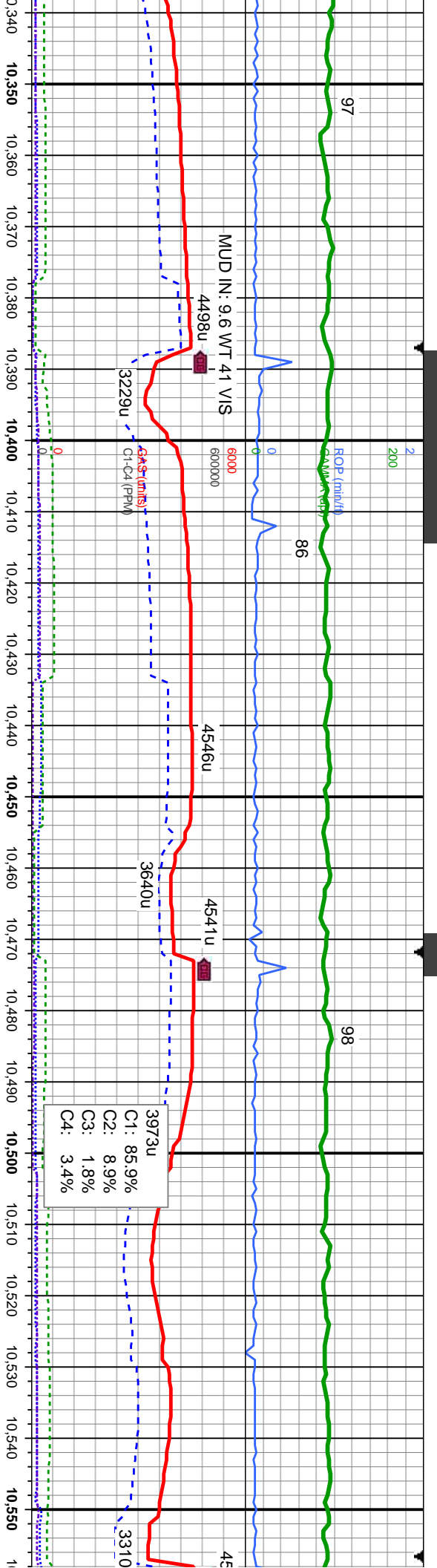
MD: 9,993 '
TVD: 7,477.82 '
Inclination: 89.96 °
Azimuth: 181.27 °
VS: 2668.89 '

MD: 10,079 '
TVD: 7,477.76 '
Inclination: 90.12 °
Azimuth: 181.66 °
VS: 2754.86 '

SS: med -dk gy, tr blk, hd, wrd, med-vf gr,w-mod srt, sb
biky-sb pily, occ pily, non - sl calc, slow stmg milky bl
cut, bri bl ring

SS: med -dk gy, tr blk, hd, wrd, med-vf gr,w-mod
srt, sb biky-sb pily, occ pily, non - sl calc, slow
stmg milky bl cut, bri bl ring





95 °
32 °

MD: 10,420 '
TVD: 7,474.75 '
Inclination: 90.87 °
Azimuth: 180.42 °
VS: 3,095.8 '

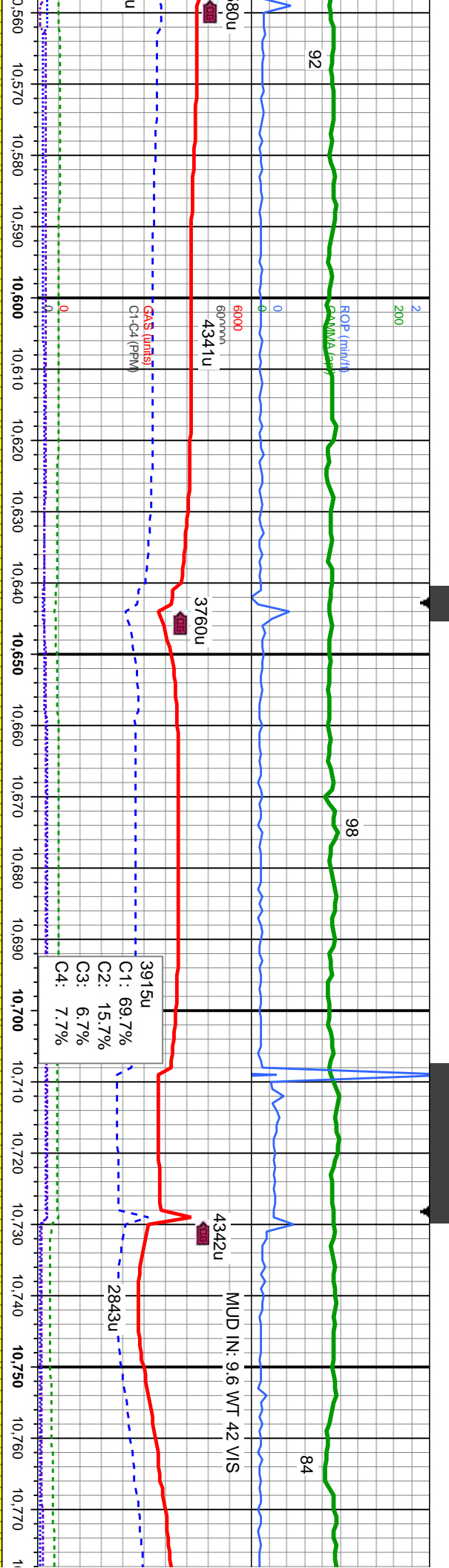
MD: 10,505 '
TVD: 7,473.46 '
Inclination: 90.58 °
Azimuth: 180.12 °
VS: 3180.79 '

tr blk, hd, wrd, med-vf gr,w-mod
ty, occ ply, non - sl calc, slow stmg
bl ring

SS: med -dk gy, tr blk, hd, wrd, med-vf gr,w-mod
srt,sb blkty-sb ply, occ ply, non - sl calc, slow stmg
milky bl cut, bri bl ring

SS: med -dk gy, tr blk, hd, wrd, med-vf gr,w-mod
srt,sb blkty-sb ply, occ ply, non - sl calc, slow stmg
milky bl cut, bri bl ring



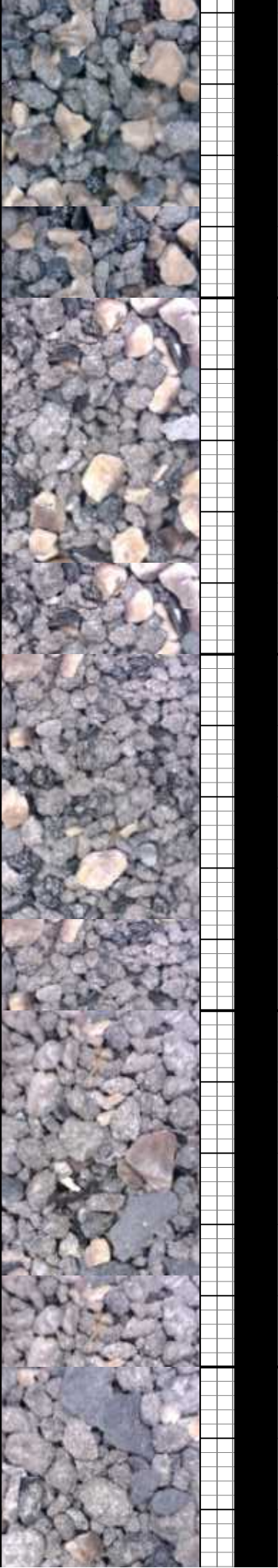


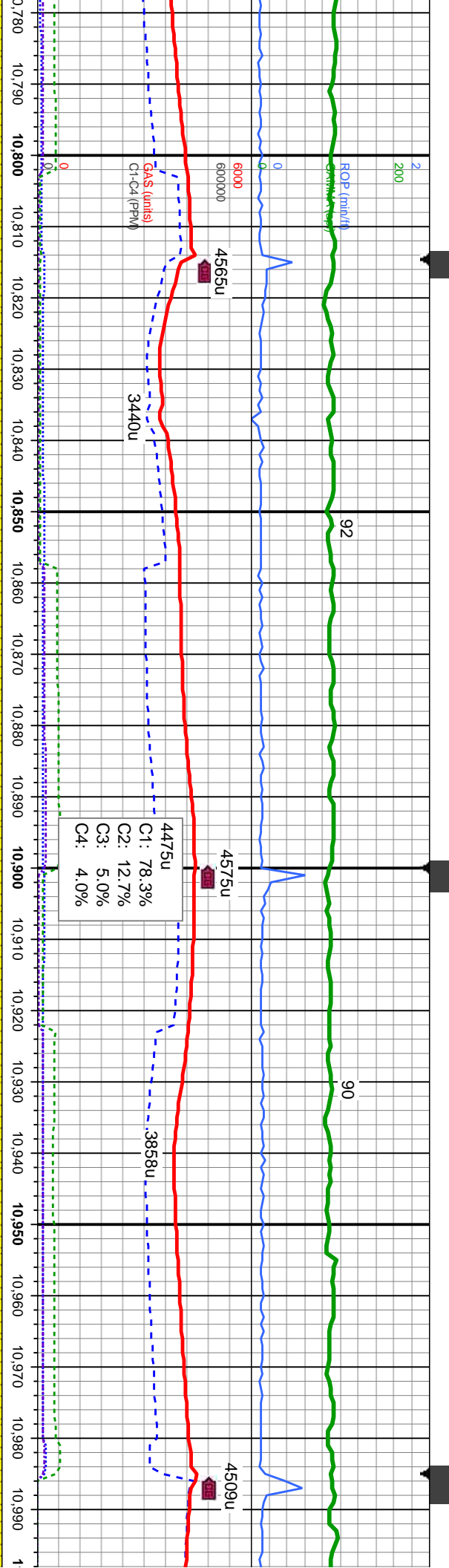
MD: 10,590 '
TVD: 7,472.96 '
Inclination: 90.39 °
Azimuth: 180.83 °
VS: 3265.77 '

MD: 10,675 '
TVD: 7,472.29 '
Inclination: 90.43 °
Azimuth: 180.45 °
VS: 3,350.78 '

MD: 10,761 '
TVD: 7,471.64 '
Inclination: 90.43 °
Azimuth: 180.44 °
VS: 3,436.78 '

med-vf gr,w-mud
sl calc, slow string
SS: med -dk gy, tr blk, hd, wrd, med-vf gr,w-mud
srt, sb blk-y-sb pty, occ pty, non - sl calc, slow string
milky bl cut, bri bl ring
SS: med -dk gy, tr blk, hd, wrd, med-vf gr,w-mud
srt, sb blk-y-sb pty, occ pty, non - sl calc, slow string
milky bl cut, bri bl ring



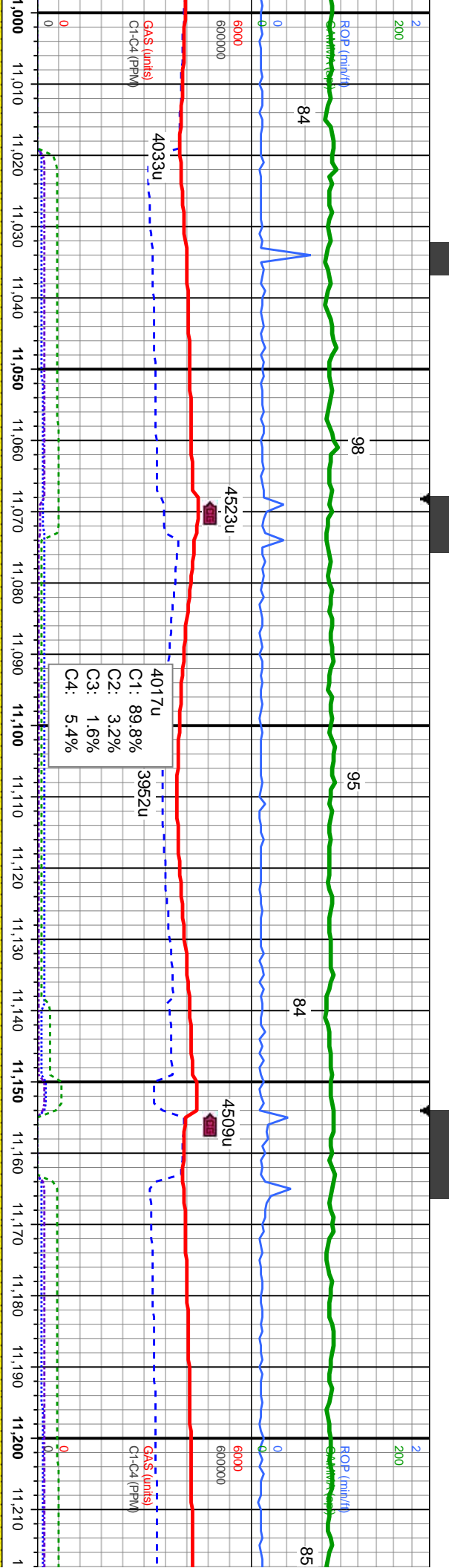


MD: 10,931 '
TVD: 7,471.47 '
Inclination: 89.69 °
Azimuth: 179.18 °
VS: 3,606.77 '

SS: med -dk gy, tr blk, hd, wrd, med-vf gr,w-mod
srt,sb blk-y-sb pfty, occ pfty, non - sl calc, slow
stmg milky bl cut, bri bl ring

SS: med -dk gy, tr blk, hd, wrd, med-vf gr,w-mod
srt,sb blk-y-sb pfty, occ pfty, non - sl calc, slow
stmg milky bl cut, bri bl ring



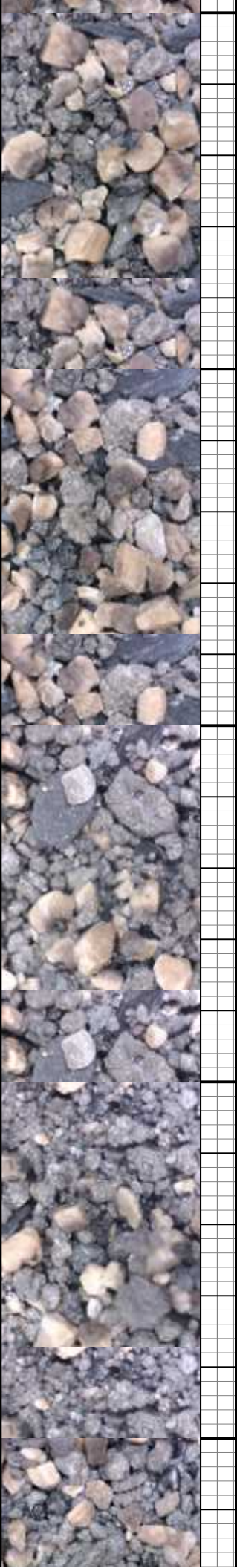


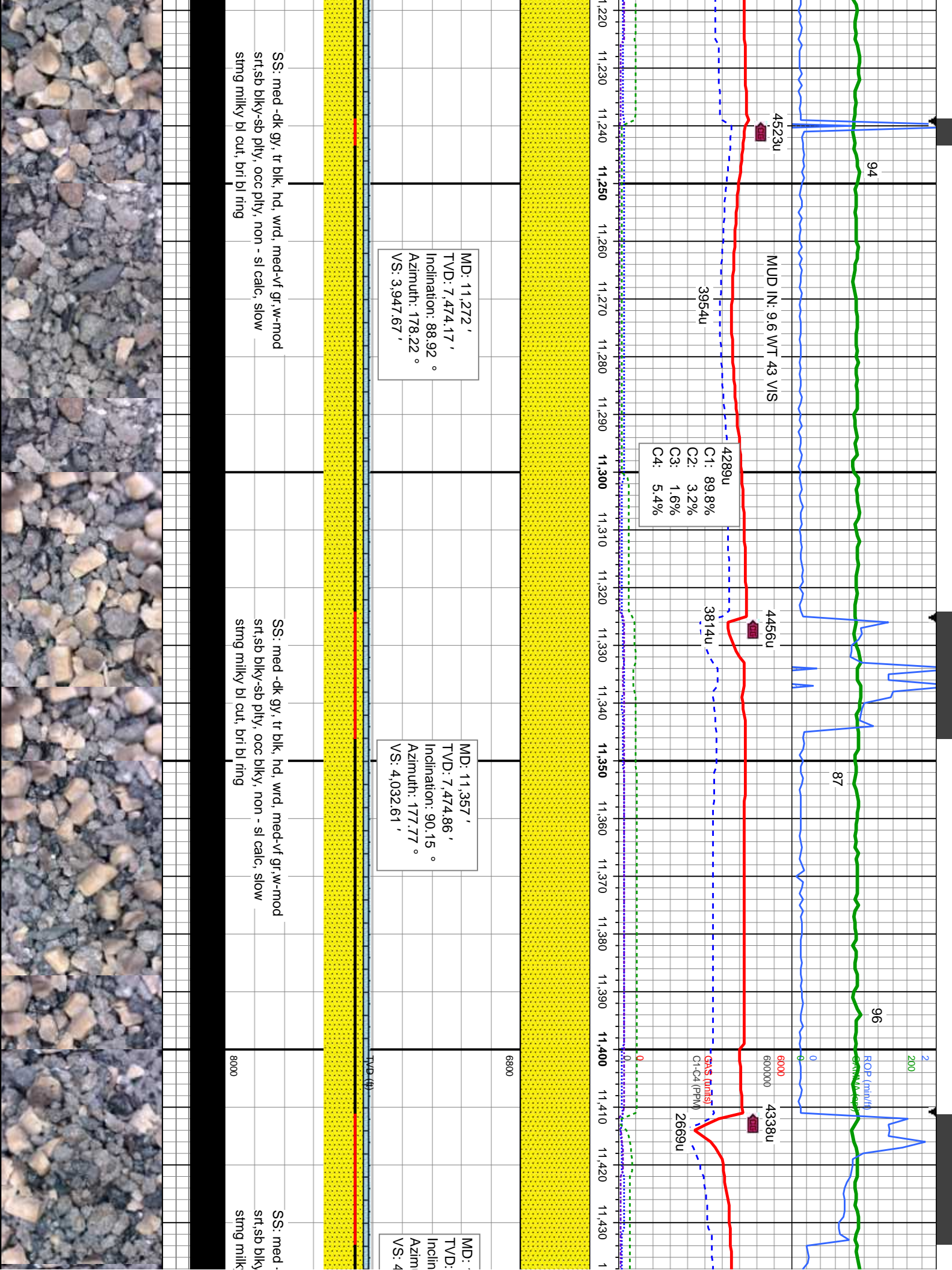
MD: 11,016'
 TVD: 7,471.92'
 Inclination: 89.69°
 Azimuth: 179.21°
 VS: 3,691.76'

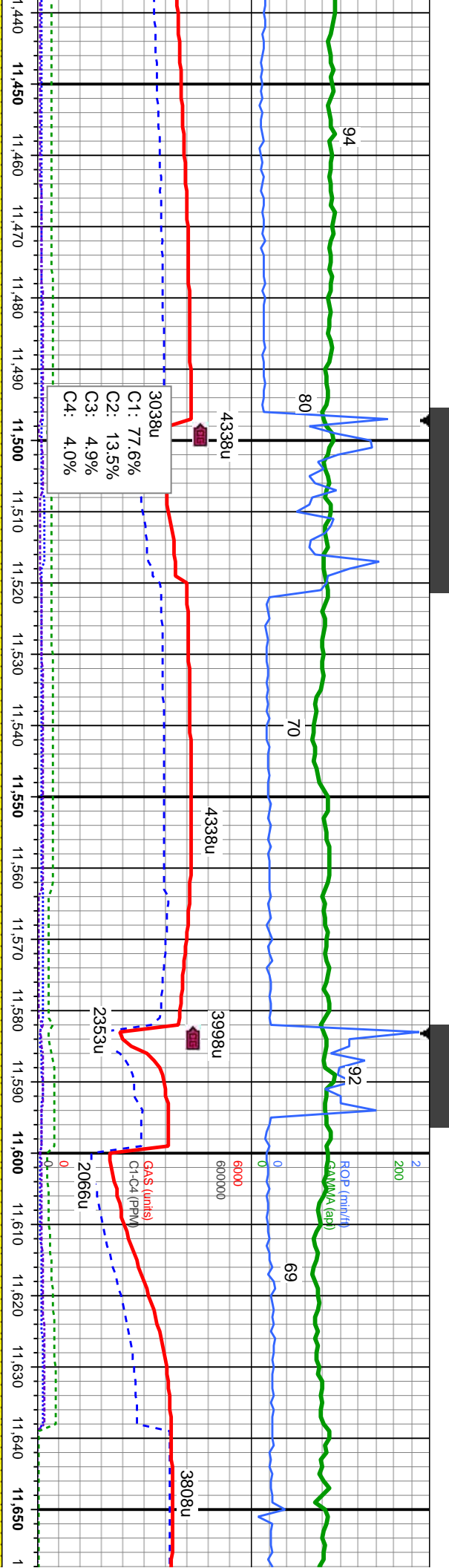
MD: 11,187'
 TVD: 7,473.04'
 Inclination: 89.56°
 Azimuth: 178.36°
 VS: 3,862.71'

SS: med -dk gy, tr blk, hd, wrd, med-vf gr, w-mod
 srt, sb blk, sb pty, occ pty, non - sl calc, slow
 string milky bl cut, brl bl ring

SS: med -dk gy, tr blk, hd, wrd, med-vf gr, w-mod
 srt, sb blk, sb pty, occ pty, non - sl calc, slow
 string milky bl cut, brl bl ring







11,443 '
7,474.19 '
ation: 90.74 °
Azimuth: 178.3 °
, 118.55 '

MD: 11,528 '
TVD: 7,473.37 '
Inclination: 90.37 °
Azimuth: 179.66 °
VS: 4,203.53 '

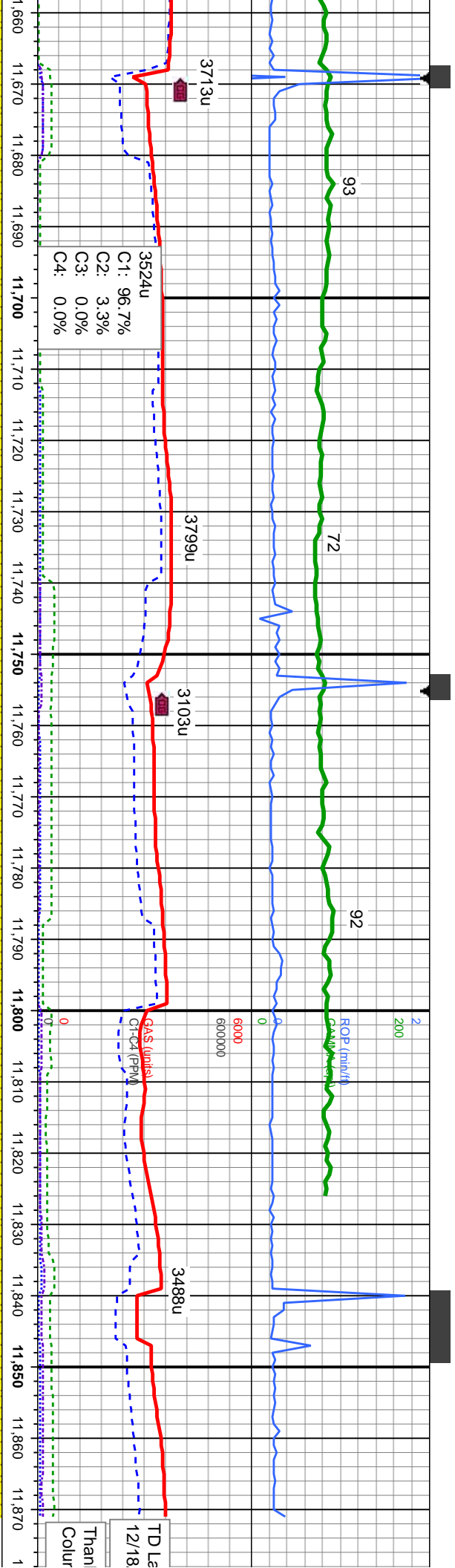
MD: 11,613 '
TVD: 7,472.6 '
Inclination: 90.67 °
Azimuth: 179.89 °
VS: 4,288.52 '

dk gy, tr blk, hd, wrd, med-vf gr,w-mod
-sb ply, occ blk, non - sl calc, slow
y bl cut, bri bl ring

SS: med -dk gy,occ lt gy, tr blk, hd, wrd,
med-vf gr,p-mod srt,sb blk-v-sb ply, occ blk,
non - sl calc, slow stmg milky bl cut, bri bl
ring

SS: lt - med gy,occ dk gy, tr off v
med-vf gr,p-mod srt,sb blk-v-blky
slow stmg milky bl cut, bri bl ring





MD: 11,698 '
TVD: 7,471.9 '
Inclination: 90.27 °
Azimuth: 180.56 °
VS: 4,373.52 '

MD: 11,783 '
TVD: 7,472.58 '
Inclination: 88.82 °
Azimuth: 178.5 °
VS: 4,458.51 '

MD: 11,818 '
TVD: 7,473.05 '
Inclination: 89.62 °
Azimuth: 180.11 °
VS: 4,493.5 '

MD: 11,871 '
TVD: 7,473.5 '
Inclination: 89.62 °
Azimuth: 180.11 °
VS: 4,546.5 '

whit, hd, wrd,
; non - sl calc,

SS: lt - med gy, occ dk gy, hd, wrd, med-vf
gr, p-mod srt, sb blk-y-blky, non - sl calc, slow
stng milky bl cut, bri bl ring

SS: lt - med gy, occ dk gy, tr off wh- crm, hd,
wrd, med-vf gr, p-mod srt, sb blk-y-blky, non
- sl calc, slow stng milky bl cut, bri bl ring



