

**Note:**

The measurement for determining any Designated Setback Location shall be made from the center of the Well or Production Facility nearest any Building Unit to the nearest wall or corner of such Building Unit.

Building - 628'  
 Building Unit - 628'  
 HOBV - > 1 Mile  
 DOAA - N/A  
 Public Road - 807'  
 Above Grnd Util. - 799'  
 Railroad - > 1 Mile  
 Property Line - 329'

Current Surface Land Use :  
 Gas well pad

**Surface: Valley Farms J2**

177' FNL  
 1313' FWL  
 Gnd El= 5541.5  
 Pad El= 5541.5

**NAD83**

Lat: 39.533874843°N  
 Long: 107.620473820°W

**NAD27**

Lat: 39.533894245°N  
 Long: 107.619860206°W

UTM 13 NORTH

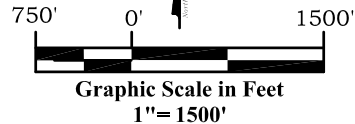
**NAD 1983**

NORTHING

14367764.773

EASTING

901535.589

**Legend**

- ◈ - Field Surveyed Section Corner
- ◈ - Field Surveyed Quarter Corner
- ◉ - Calculated Section Corner Location
- ◈ - Field Surveyed 1/6 Corner

**Notes:**

1. LATITUDE AND LONGITUDE COORDINATES ARE DIFFERENTIALLY CORRECTED AND BASED ON PUBLISHED NGS CONTROL STATION "WDP-5". SYSTEM: UTM ZONE: 13 NORTH DATUM: NAD 1983 (CONUS)
2. ELEVATIONS ARE BASED ON NAVD OF 1929.
3. ALL BOTTOM AND TOP HOLE LOCATIONS ARE MEASURED 90 DEGREES FROM SECTION LINE.
4. USGS QUADRANGLE MAP "SILT".
5. CURRENT SURFACE LAND USE: GAS WELL PAD.
6. PDOP AT THE TIME OF LOCATION OF SURFACE WELL = 2.4

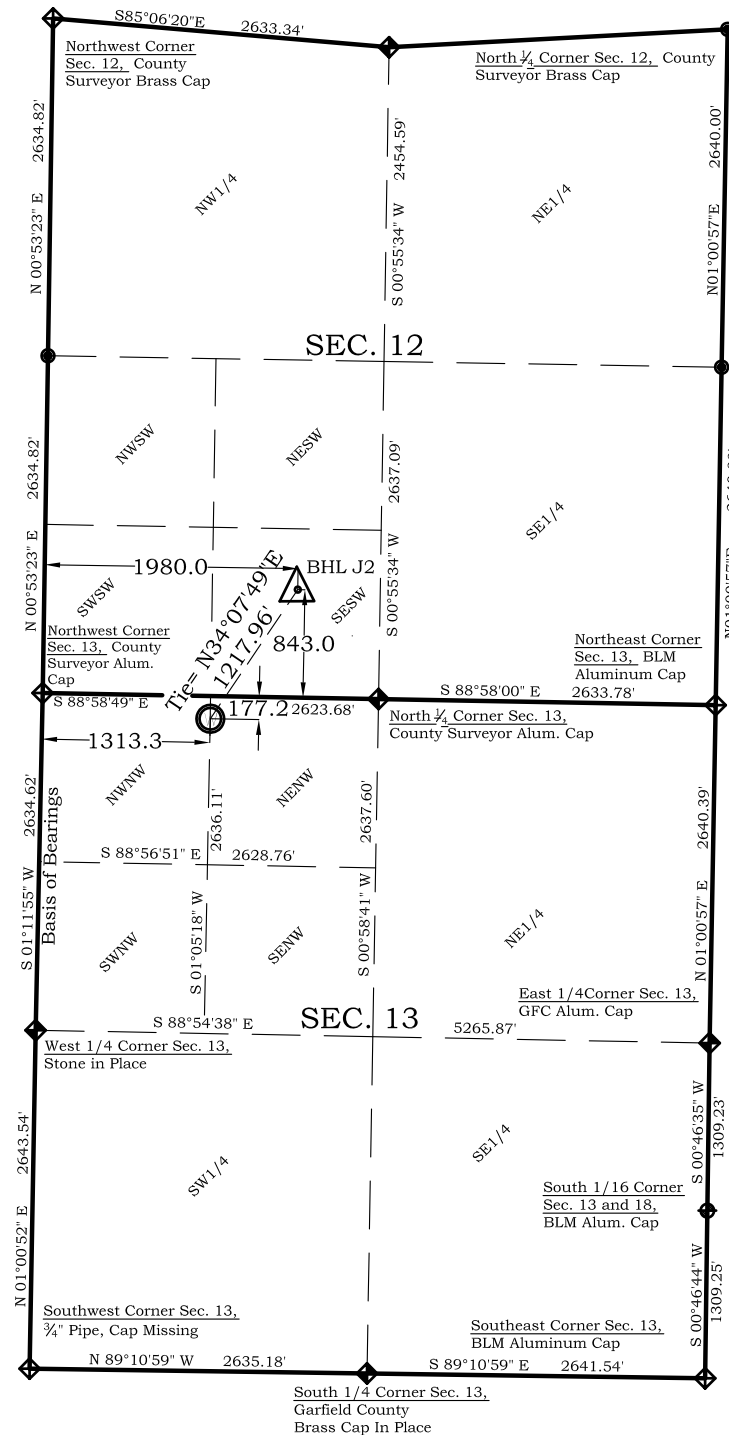
**Prepared For: Ursa Operating Company LLC**  
**Proposed Valley Farms J2 Well Surface Situate in The**  
**NE1/4NW1/4 Section 13, Township 6 South, Range 92 West**  
**of the 6 th. Principal Meridian, County of Garfield, State**  
**of Colorado**



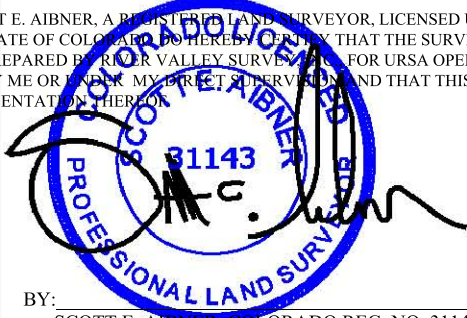
**303.a Form 2**

**Valley Farms J Pad**  
**Valley Farms Well J2**

**Section 13, Township 6 South, Range 92 West**

**SURVEYOR'S CERTIFICATE**

I, SCOTT E. AIBNER, A REGISTERED LAND SURVEYOR, LICENSED UNDER THE LAWS OF THE STATE OF COLORADO DO HEREBY CERTIFY THAT THE SURVEY SHOWN HEREON WAS PREPARED BY RIVER VALLEY SURVEY, INC. FOR Ursa OPERATING COMPANY, LLC, BY ME OR UNDER MY DIRECT SUPERVISION AND THAT THIS PLAT IS A TRUE REPRESENTATION THEREOF.



BY:

SCOTT E. AIBNER, COLORADO REG. NO. 31143



**River Valley Survey, Inc.**  
 110 East 3rd. Street, Suite 213  
 Rifle, Colorado 81650  
 Ph: 970-379-7846

**Project: RVS 06001-36J**

**Field Date: 07-18-13**

**Scale: 1"= 1500'**

**Date: 02-16-14**

**Sheet: 1 of 1**