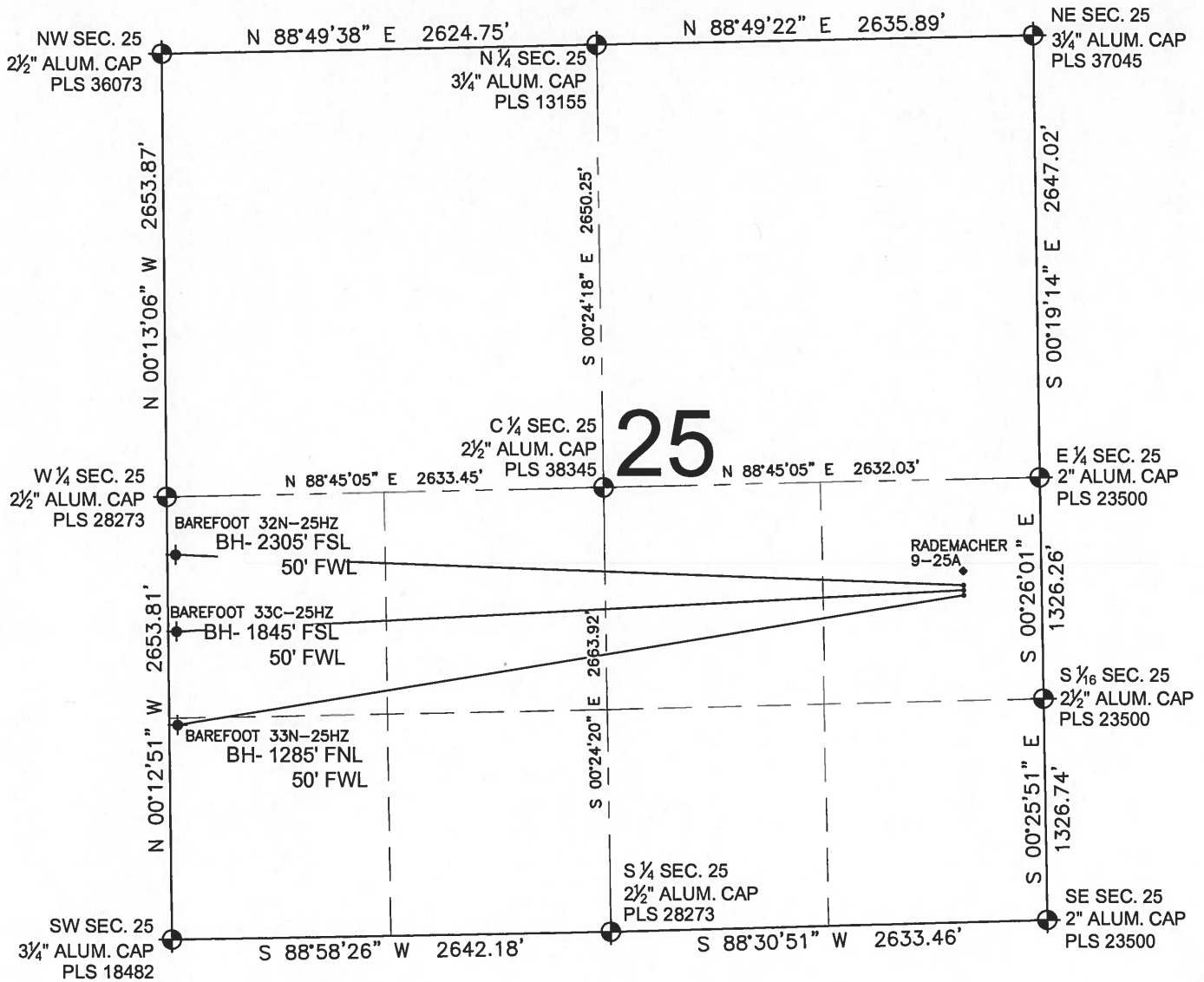


BAREFOOT 32N-25HZ MULTI-WELL PLAN

SECTION 25, TOWNSHIP 3 NORTH, RANGE 68 WEST, 6TH P.M.



LEGEND

- ⊕ = EXISTING MONUMENT
- = PROPOSED WELL
- ⬮ = BOTTOM HOLE
- ◆ = EXISTING WELL
- BH = BOTTOM HOLE

NOTES:

BAREFOOT 32N-25HZ TO BE AT 2019' FSL, 470' FEL.
BOTTOM HOLE AT 2305' FSL & 50' FWL
BAREFOOT 33C-25HZ TO BE AT 1989' FSL, 470' FEL.
BOTTOM HOLE AT 1845' FSL & 50' FWL
BAREFOOT 33N-25HZ TO BE AT 1959' FSL, 470' FEL.
BOTTOM HOLE AT 1285' FSL & 50' FWL
RADEMACHER 9-25A IS 2104' FSL, 470' FEL.

PREPARED BY:



KERR-MCGEE OIL & GAS ONSHORE LP

FIELD DATE:
01-24-14

DRAWING DATE:
01-27-14

SURFACE LOCATION:

NE 1/4, SE 1/4, SEC. 25, T3N, R68W, 6TH P.M.
WELD COUNTY, COLORADO

