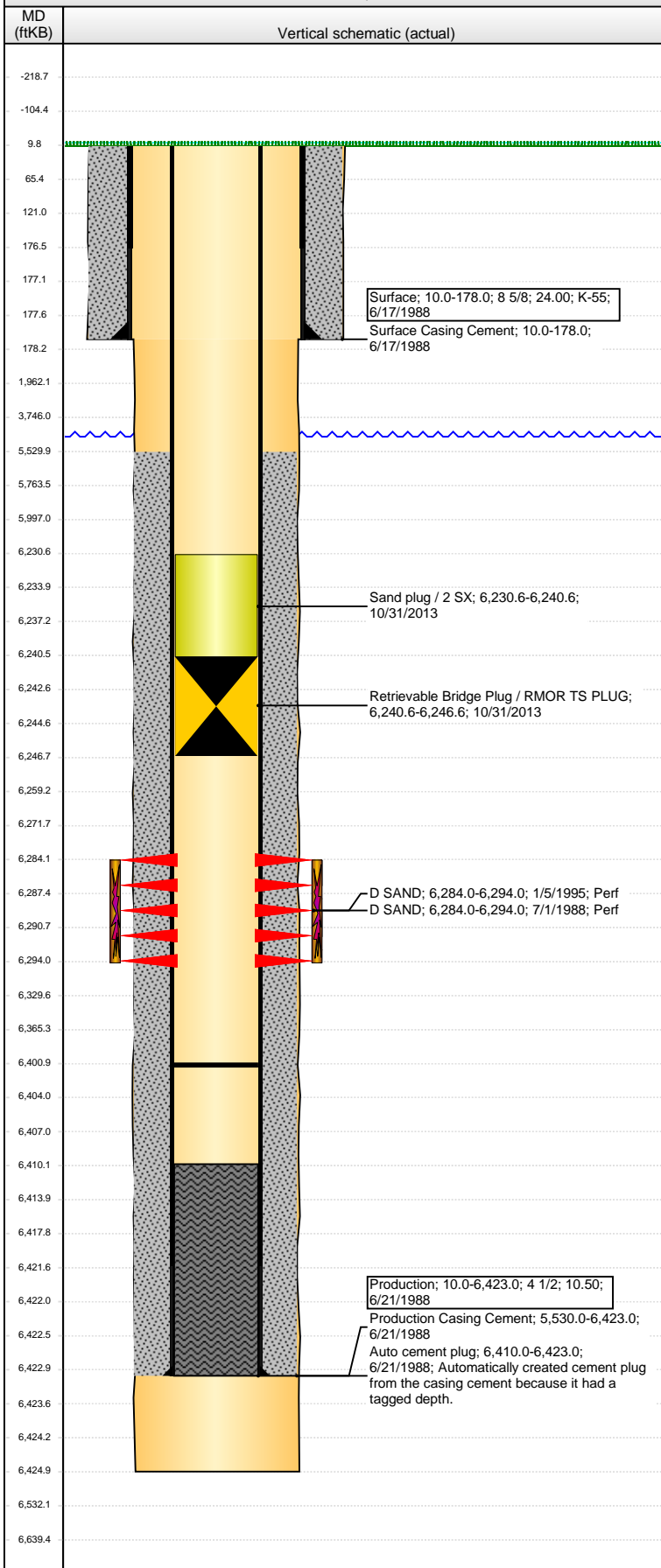


Well Name: LILLI UNIT 16-34

VERTICAL - ORIGINAL HOLE, 3/3/2014 1:55:42 PM



Well Header

API	Business Unit	District	Well Config
05-123-13991	WATTENBERG	25	VERTICAL
Original KB Elevation (ft)	KB - GL / MSL (ftKB)	Spud Date	P & A Date
4,753.00	10.00	6/17/1988	

Comment

IHS 297 WELL IMPORT, VERY LITTLE WELL INFO AVAIL.

Directions To Well

HIWAY 14 AND WCR 129, NORTH 6,7 MILES (TO CR 98), EAST 0.6 MILE, AND NORTH NORTHWEST INTO.

Congressional Location

Quarter 1	Quarter 2	Quarter 3	Quarter 4	Section	Township	Twnshp N...	Range	Rng E/W Dir
		SE	SE	34	9 N		58	W

Bottom Hole Location

North-South Distance (ft)	From N or S Line	East-West Distance (ft)	From E or W Line

Plug Back Total Depths

Date	Depth (ftKB)	Method	Com
6/30/1988	6,401.0	CASED HOLE LOG	DEPTH LOGGER ON CBL

Wellbore Sections

Section Des	Size (in)	Act Top, MD (ftKB)	Act Btm, MD (ftKB)
SURFACE	12 1/4	10.0	178.0
PRODUCTION	7 7/8	178.0	6,425.0

Zone Statuses

Zone Name	Status Date	Status	Job
D SAND	7/1/1988	PR	DRILLING/COMPLETION - ORIGINAL, 6/17/1988 06:00
D SAND	1/9/1995	PR	RECOMPLETION, 12/1/1994 00:00

Casing Strings

Casing Description	Run Date	OD (in)	Wt/Len (l...)	Grade	Top, MD (ft...)	MD (ftKB)
Surface	6/17/1988	8 5/8	24.00	K-55	10.0	178.0

Production, 6,423.0ftKB

Casing Description	Run Date	OD (in)	Wt/Len (l...)	Grade	Top, MD (ft...)	MD (ftKB)
Production	6/21/1988	4 1/2	10.50		10.0	6,423.0

Cement

Description	Top Depth (ftKB)	Bottom Depth (ftKB)
Surface Casing Cement	10.0	178.0
Description	Top Depth (ftKB)	Bottom Depth (ftKB)
Production Casing Cement	5,530.0	6,423.0

Tubing Components

Item Des	OD (in)	Wt (lb/ft)	Grade	Jts	Len (ft)	Btm (ftKB)	Btm (TVD) (ftKB)

Perforation Data

Zone	Bnch/St g	Entered Shot Total	Top (ftKB)	Btm (ftKB)	Date
D SAND, ORIGINAL HOLE		41	6,284.00	6,294.00	7/1/1988
D SAND, ORIGINAL HOLE		40	6,284.00	6,294.00	1/5/1995

Stimulations & Treatments

Date	Zone	Primary Job Type
12/1/1994	D SAND, ORIGINAL HOLE	DRILLING/COMPLETION - ORIGINAL
Technical Result	Tech Result Details	Tech Result Note

Comment

Date	Zone	Primary Job Type
1/9/1995	D SAND, ORIGINAL HOLE	RECOMPLETION
Technical Result	Tech Result Details	Tech Result Note

Comment

Other In Hole

Run Date	Des	OD (in)	Top (ftKB)	Btm (ftKB)
10/31/2013	Retrievable Bridge Plug / RMOR TS PLUG	3.99	6,240.6	6,246.6
10/31/2013	Sand plug / 2 SX	3.99	6,230.6	6,240.6

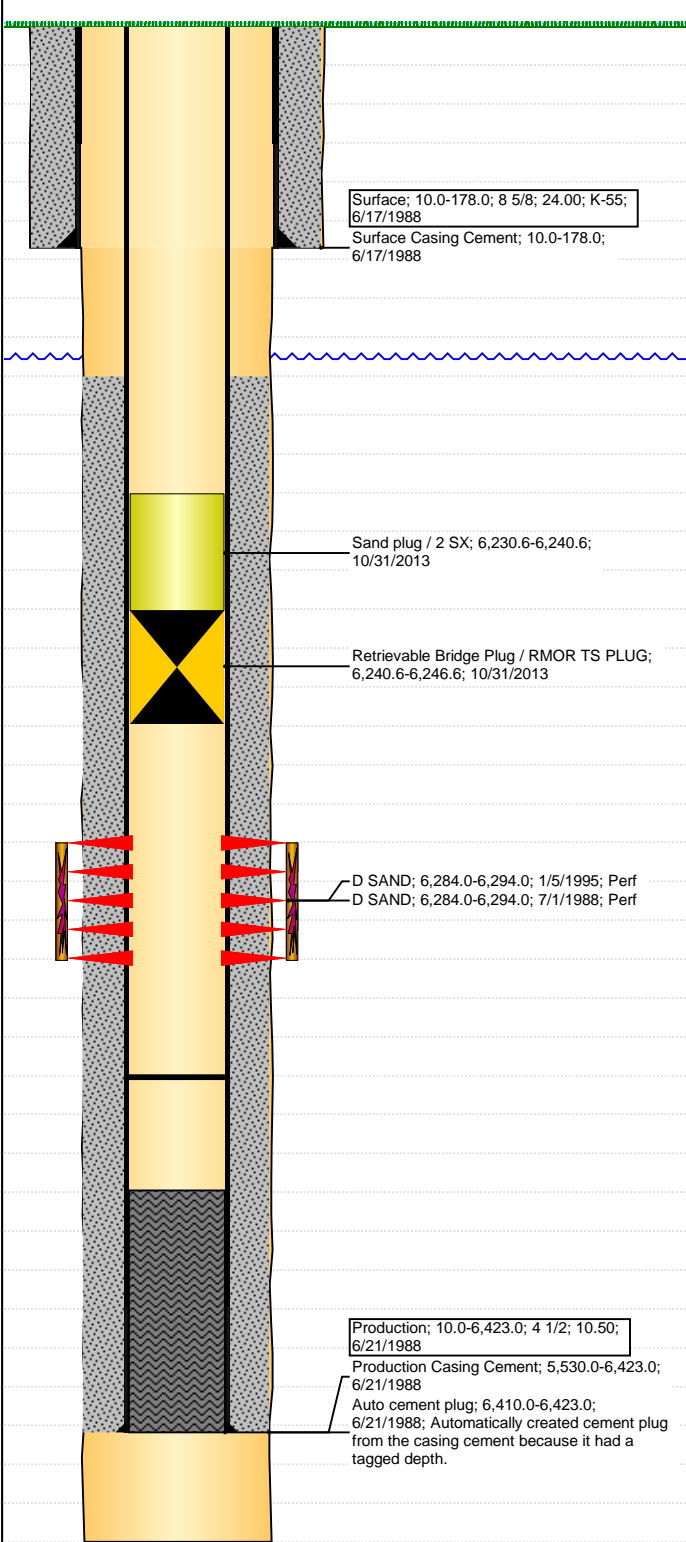
Logs

Date	Type	Top, MD (ftKB)	Btm, MD (ftKB)
6/21/1988	COMPENSATED DENSITY	170.0	6,391.0
6/21/1988	INDUCTION	170.0	6,391.0
6/21/1988	MICROLOG	170.0	6,391.0

Well Name: LILLI UNIT 16-34

VERTICAL - ORIGINAL HOLE, 3/3/2014 1:55:44 PM

Logs

MD (ftKB)	Vertical schematic (actual)	Date	Type	Top, MD (ftKB)	Btm, MD (ftKB)
		6/30/1988	CEMENT BOND	5,120.0	6,401.0
-218.7	 <p>Surface; 10.0-178.0; 8 5/8; 24.00; K-55; 6/17/1988 Surface Casing Cement; 10.0-178.0; 6/17/1988</p> <p>Sand plug / 2 SX; 6,230.6-6,240.6; 10/31/2013</p> <p>Retrievable Bridge Plug / RMOR TS PLUG; 6,240.6-6,246.6; 10/31/2013</p> <p>D SAND; 6,284.0-6,294.0; 1/5/1995; Perf D SAND; 6,284.0-6,294.0; 7/1/1988; Perf</p> <p>Production; 10.0-6,423.0; 4 1/2; 10.50; 6/21/1988 Production Casing Cement; 5,530.0-6,423.0; 6/21/1988 Auto cement plug; 6,410.0-6,423.0; 6/21/1988; Automatically created cement plug from the casing cement because it had a tagged depth.</p>				
-104.4					
9.8					
65.4					
121.0					
176.5					
177.1					
177.6					
178.2					
1,962.1					
3,746.0					
5,529.9					
5,763.5					
5,997.0					
6,230.6					
6,233.9					
6,237.2					
6,240.5					
6,242.6					
6,244.6					
6,246.7					
6,259.2					
6,271.7					
6,284.1					
6,287.4					
6,290.7					
6,294.0					
6,329.6					
6,365.3					
6,400.9					
6,404.0					
6,407.0					
6,410.1					
6,413.9					
6,417.8					
6,421.6					
6,422.0					
6,422.5					
6,422.9					
6,423.6					
6,424.2					
6,424.9					
6,532.1					
6,639.4					