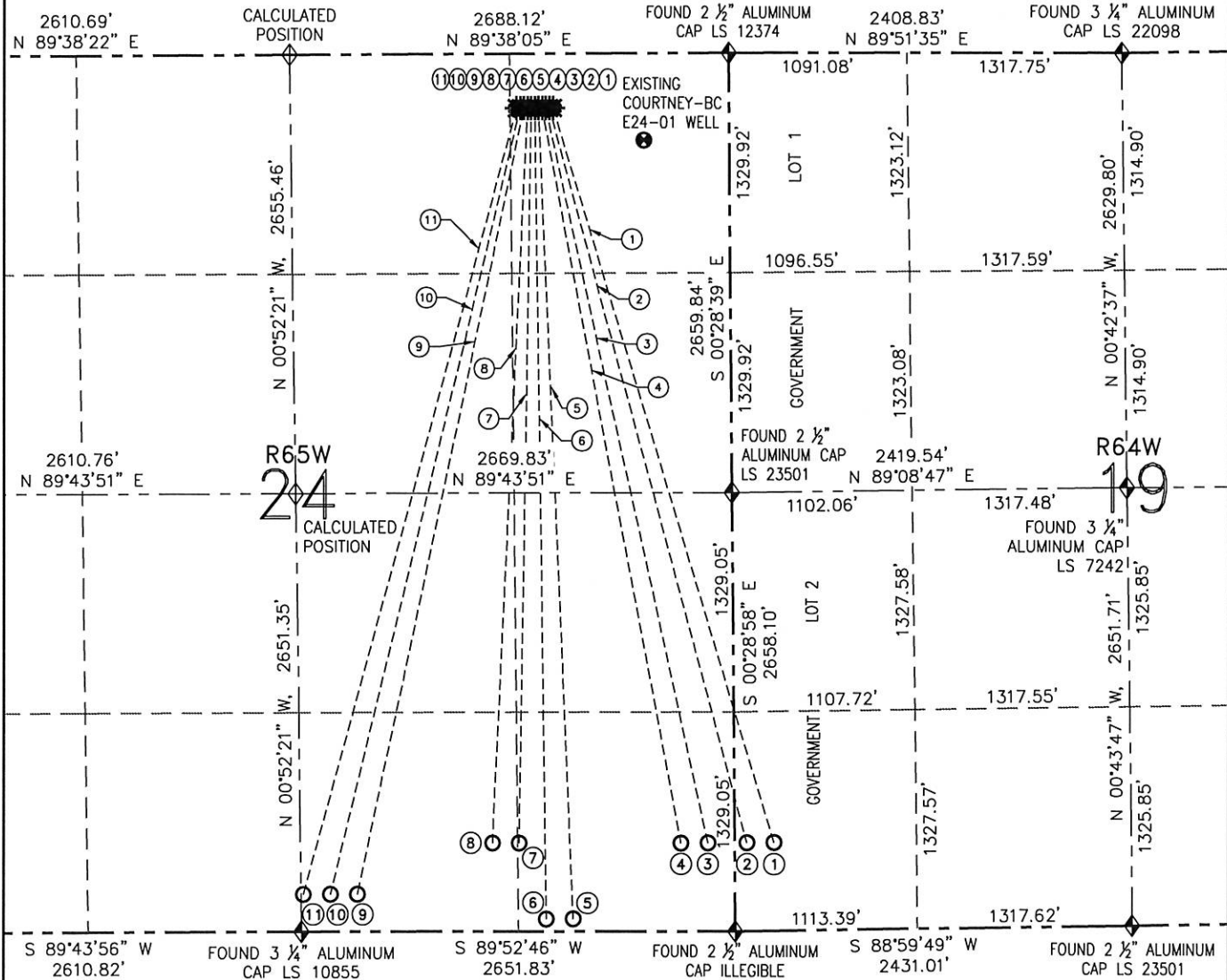


# MULTI-WELL PAD DIRECTIONAL LAYOUT

## MACKINAW A19-79HNA PAD

THIS MAP DOES NOT REPRESENT A BOUNDARY SURVEY

SECTION: 24  
TOWNSHIP: 6 NORTH  
RANGE: 65 WEST



NO.	WELL NAME	FOOTAGES		LATITUDE	LONGITUDE	BORE PATH
1	MACKINAW A19-79HNA	BHL: 535' FSL	BHL: 240' FWL	BHL: N 40.46559°	BHL: W 104.60103°	S 16°57'25\" E 4643.58'
2	MACKINAW A19-79HNC	BHL: 535' FSL	BHL: 75' FWL	BHL: N 40.46559°	BHL: W 104.60162°	S 15°15'07\" E 4606.65'
3	STORIS E24-72-1HN	BHL: 535' FSL	BHL: 165' FEL	BHL: N 40.46559°	BHL: W 104.60249°	S 12°36'23\" E 4555.77'
4	STORIS E24-72-1HC	BHL: 535' FSL	BHL: 330' FEL	BHL: N 40.46559°	BHL: W 104.60308°	S 10°50'44\" E 4526.99'
5	STORIS E24-73-1HNC	BHL: 75' FSL	BHL: 990' FEL	BHL: N 40.46435°	BHL: W 104.60545°	S 02°32'42\" E 4912.26'
6	STORIS E24-73-1HNA	BHL: 75' FSL	BHL: 1155' FEL	BHL: N 40.46435°	BHL: W 104.60605°	S 00°52'58\" E 4908.15'
7	STORIS E24-73HC	BHL: 535' FSL	BHL: 1320' FEL	BHL: N 40.46561°	BHL: W 104.60664°	S 00°54'41\" W 4448.36'
8	STORIS E24-73HN	BHL: 535' FSL	BHL: 1485' FEL	BHL: N 40.46562°	BHL: W 104.60723°	S 02°44'41\" W 4453.09'
9	STORIS E24-75-1HC	BHL: 225' FSL	BHL: 2310' FEL	BHL: N 40.46479°	BHL: W 104.61019°	S 12°01'01\" W 4866.20'
10	STORIS E24-75-1HN	BHL: 225' FSL	BHL: 2475' FEL	BHL: N 40.46479°	BHL: W 104.61079°	S 13°38'50\" W 4898.16'
11	STORIS E24-75HN	BHL: 225' FSL	BHL: 2640' FEL	BHL: N 40.46479°	BHL: W 104.61138°	S 15°15'17\" W 4933.78'



FIELD DATE: 12/18/12  
PLOT DATE: 02/13/14  
DRAWN BY: CJD  
JOB NO.: NE12383  
SHEET NO.: 8 of 20

- LEGEND
- PROPOSED WELL
  - EXISTING WELL
  - BOTTOM HOLE
  - FOUND MONUMENT
  - CALCULATED POSITION

NOTE: BEARINGS ARE GRID BEARINGS OF THE COLORADO STATE PLANE COORDINATE SYSTEM, NORTH ZONE, NAD 83. THE LINEAL DIMENSIONS SHOWN HEREON ARE BASED UPON THE "U.S. SURVEY FOOT".

