



Cathedral Energy Services

135551

5":100' - MD

11/19/2013 12:23:24 PM

Oper. Company: Whiting Petroleum

API/UWI: 05-123-37899

Country: USA

Field: DJ Basin

State / Province: CO

Well: Razor 27I-3413A

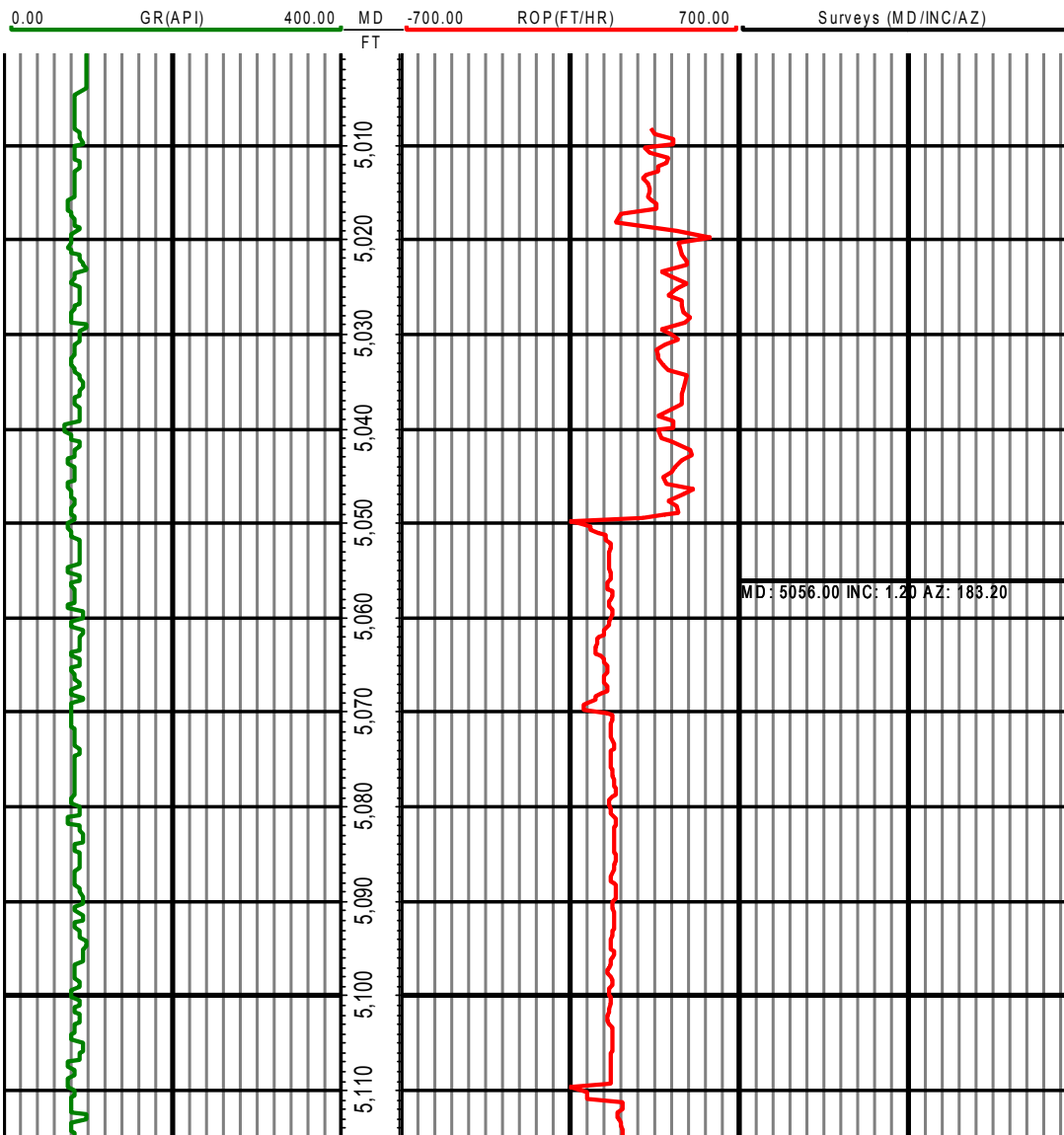
County / Parish: Weld

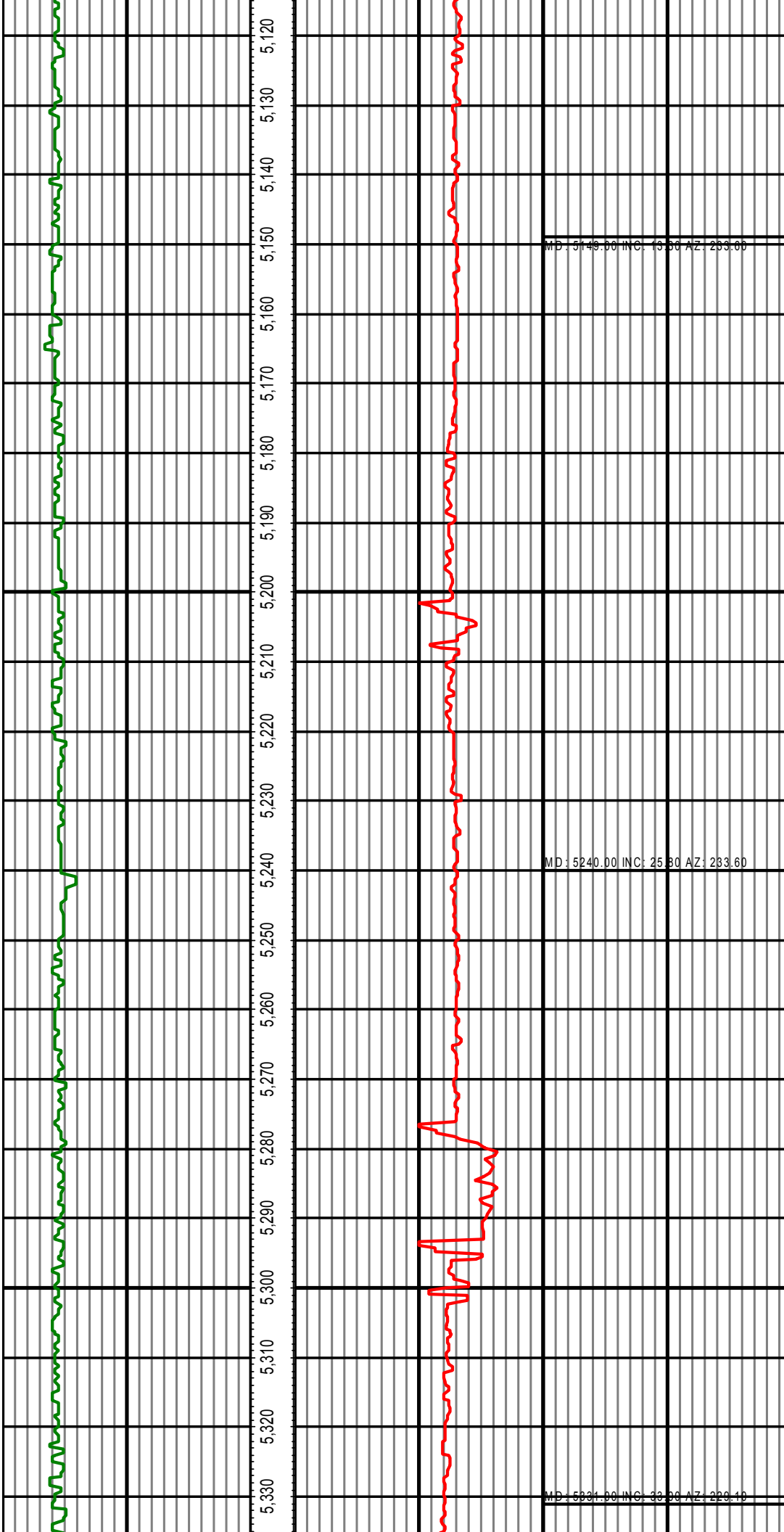
Rig: Cade 23

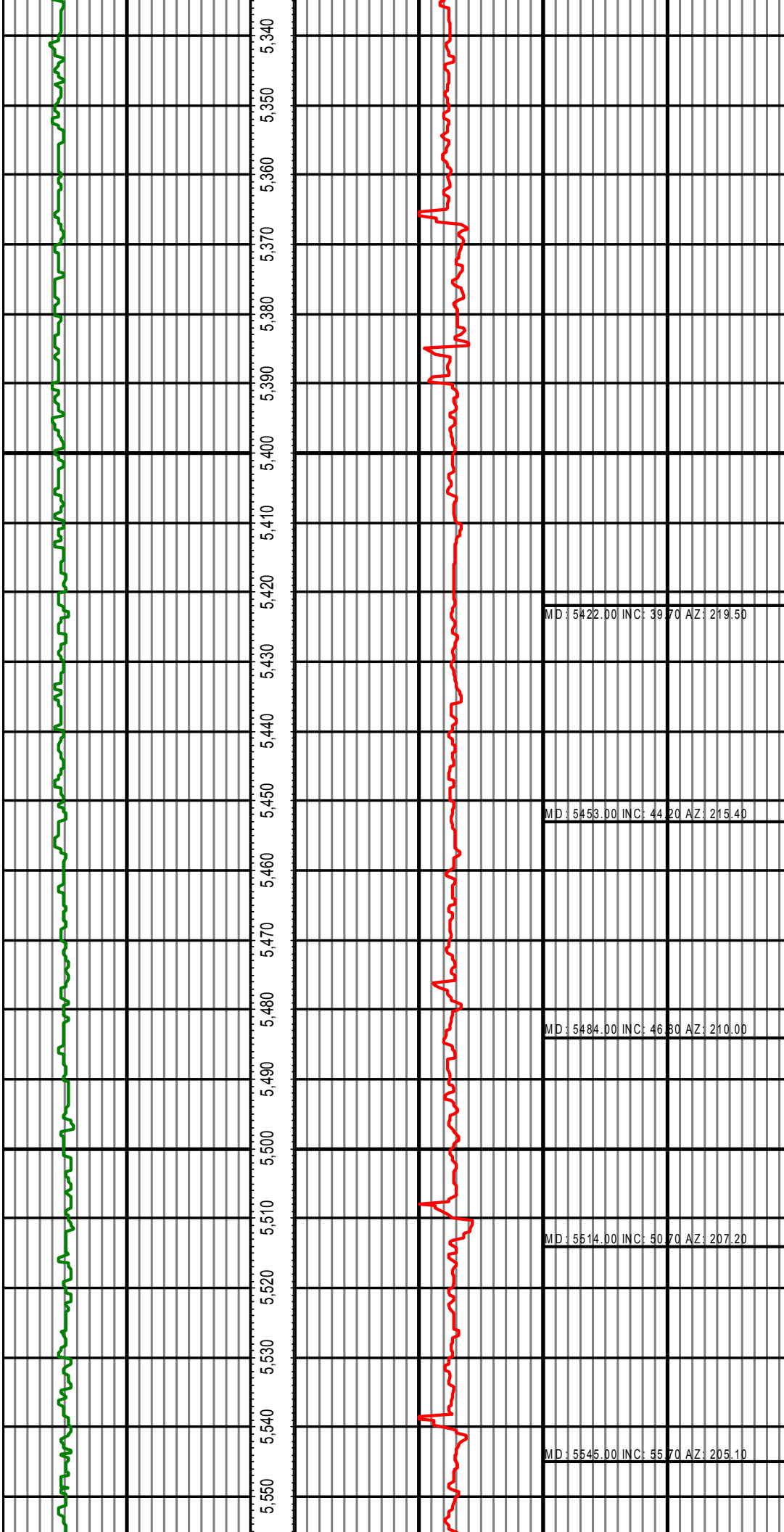
Started: 11/14/2013 12:44 PM

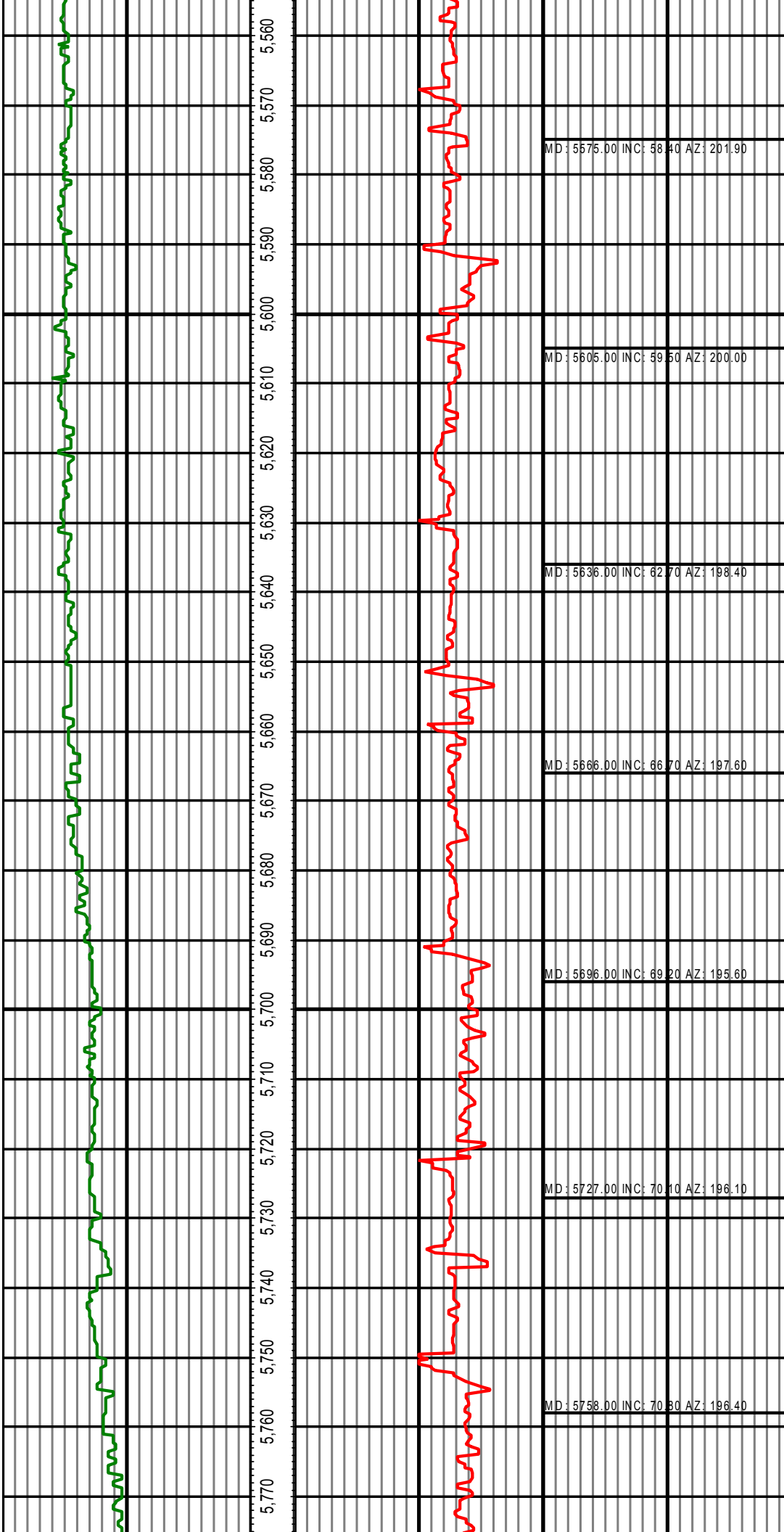
Ended:

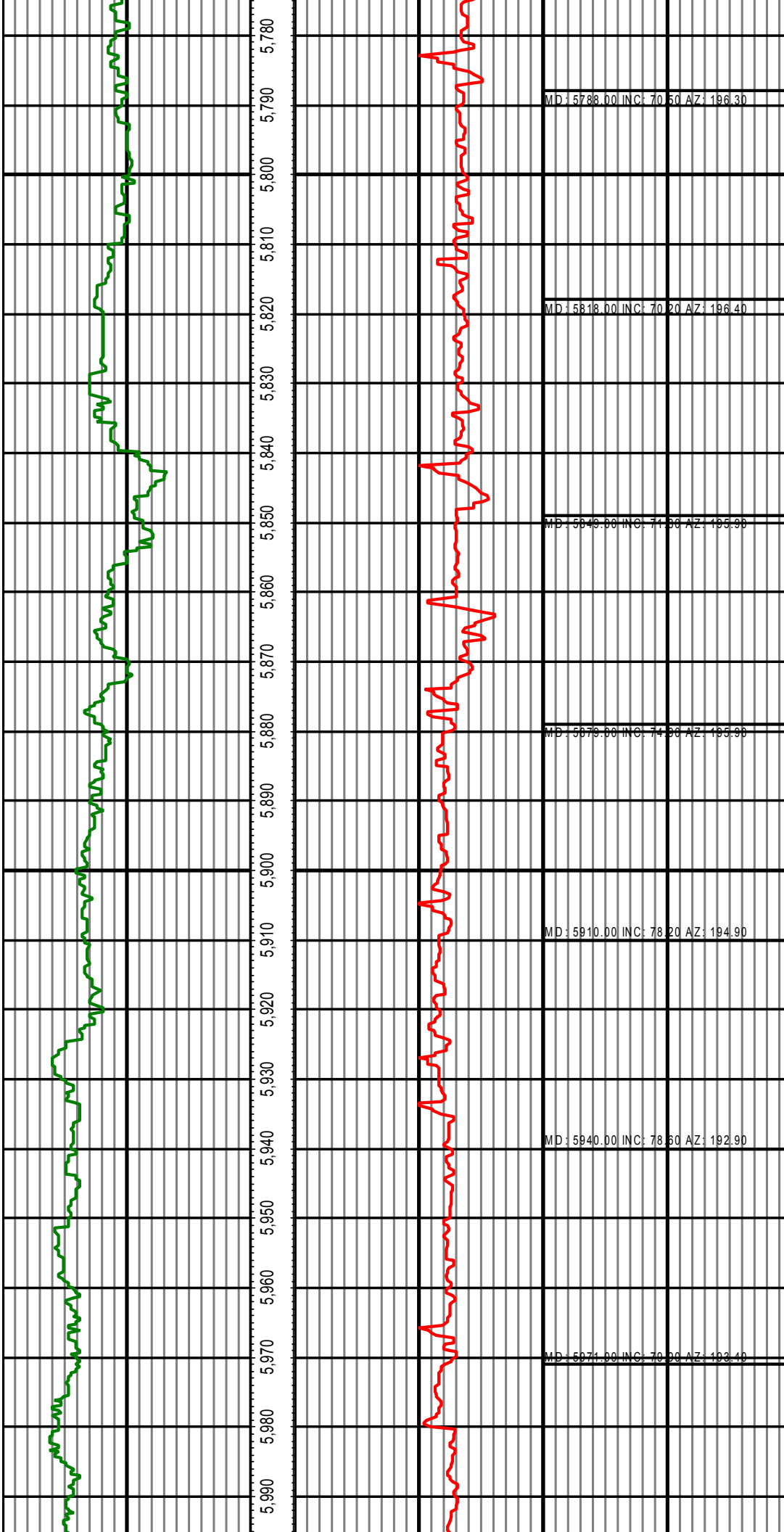
All interpretations are opinions based on inferences from electrical or other measurements and we cannot and do not guarantee the accuracy or correctness of any interpretation, and we shall not except in the case of gross or willful negligence on our part, be liable or responsible for any loss, cost damages or expenses incurred or sustained by anyone resulting from an interpretation made by any of our officers, agents, or employees.

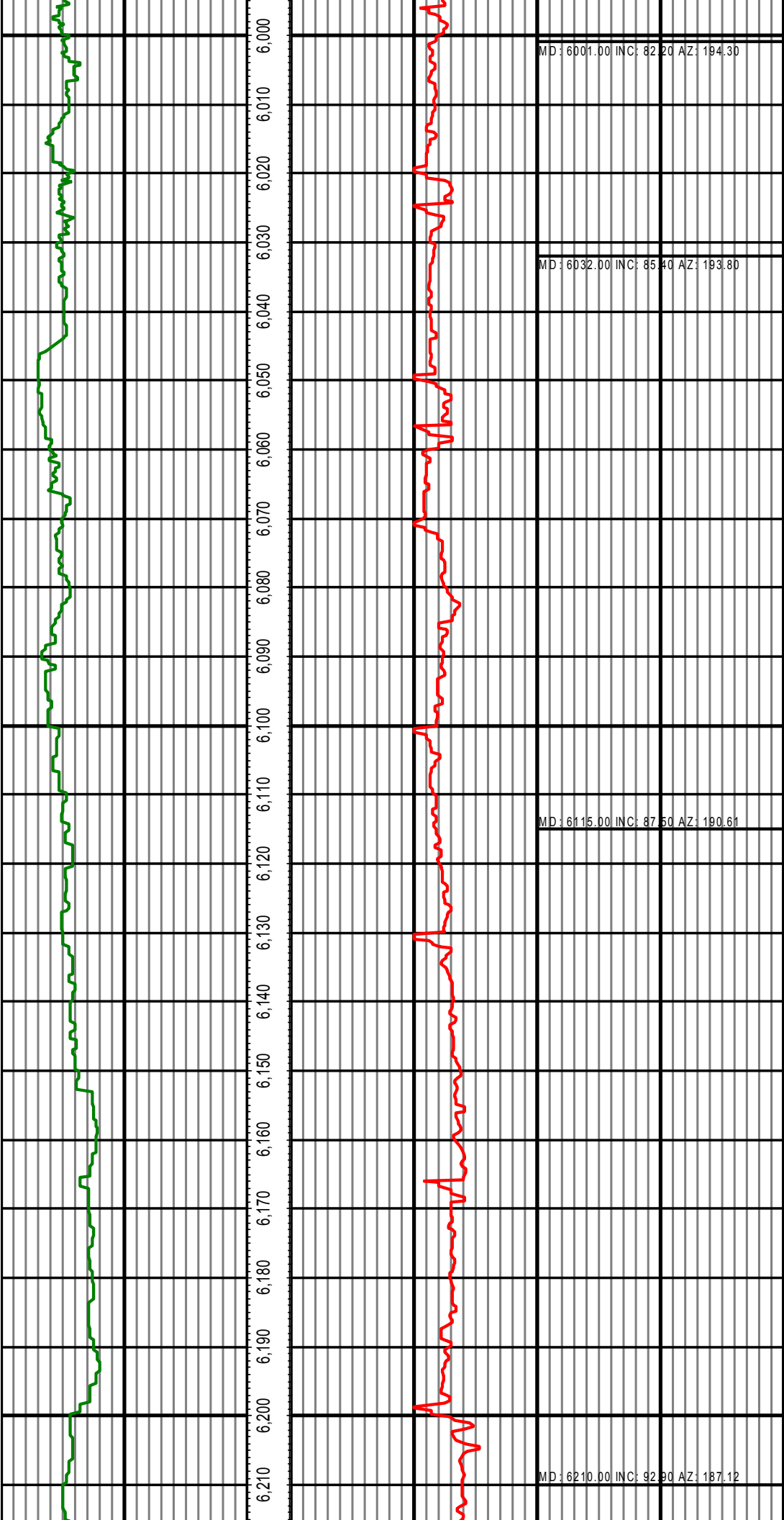


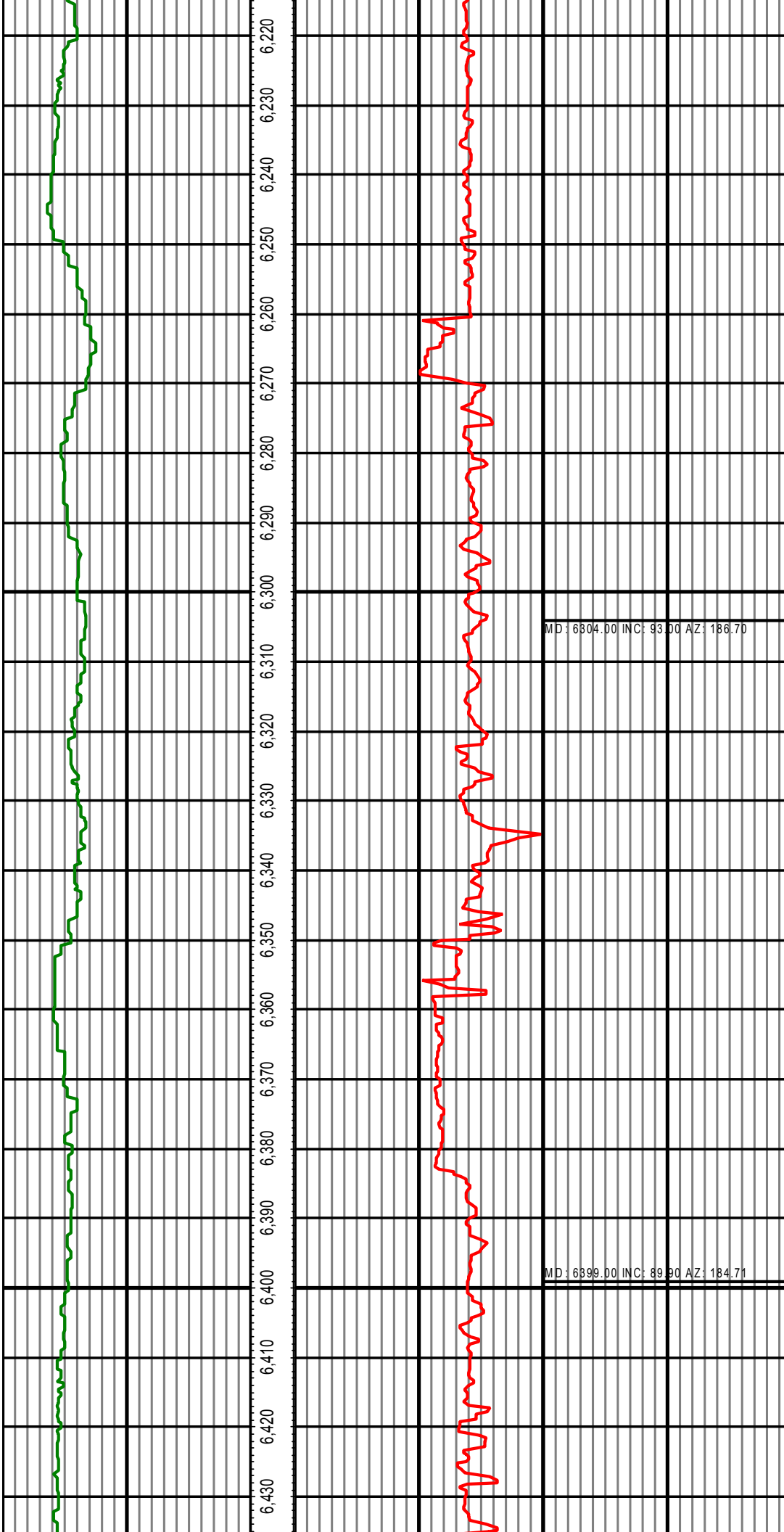


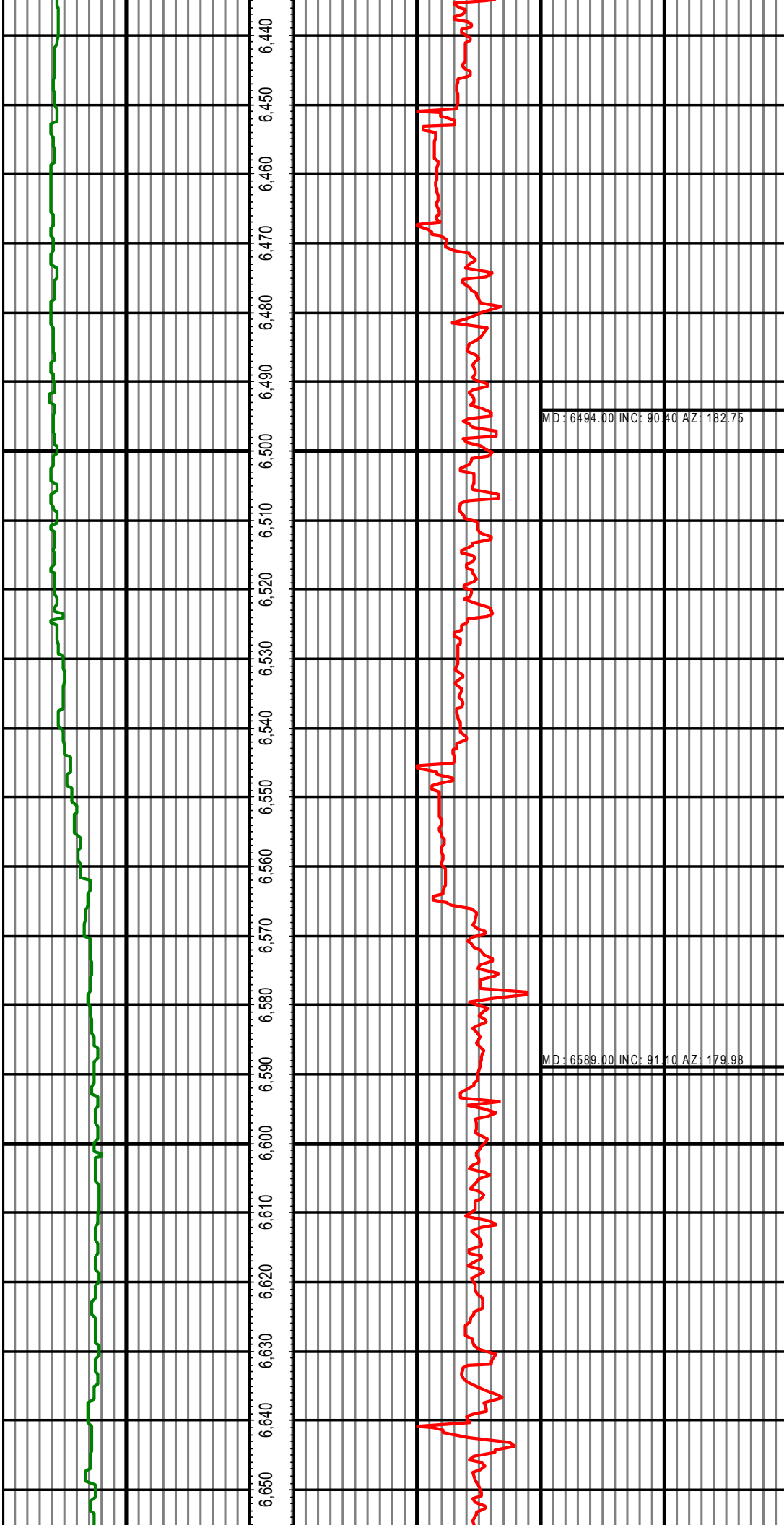


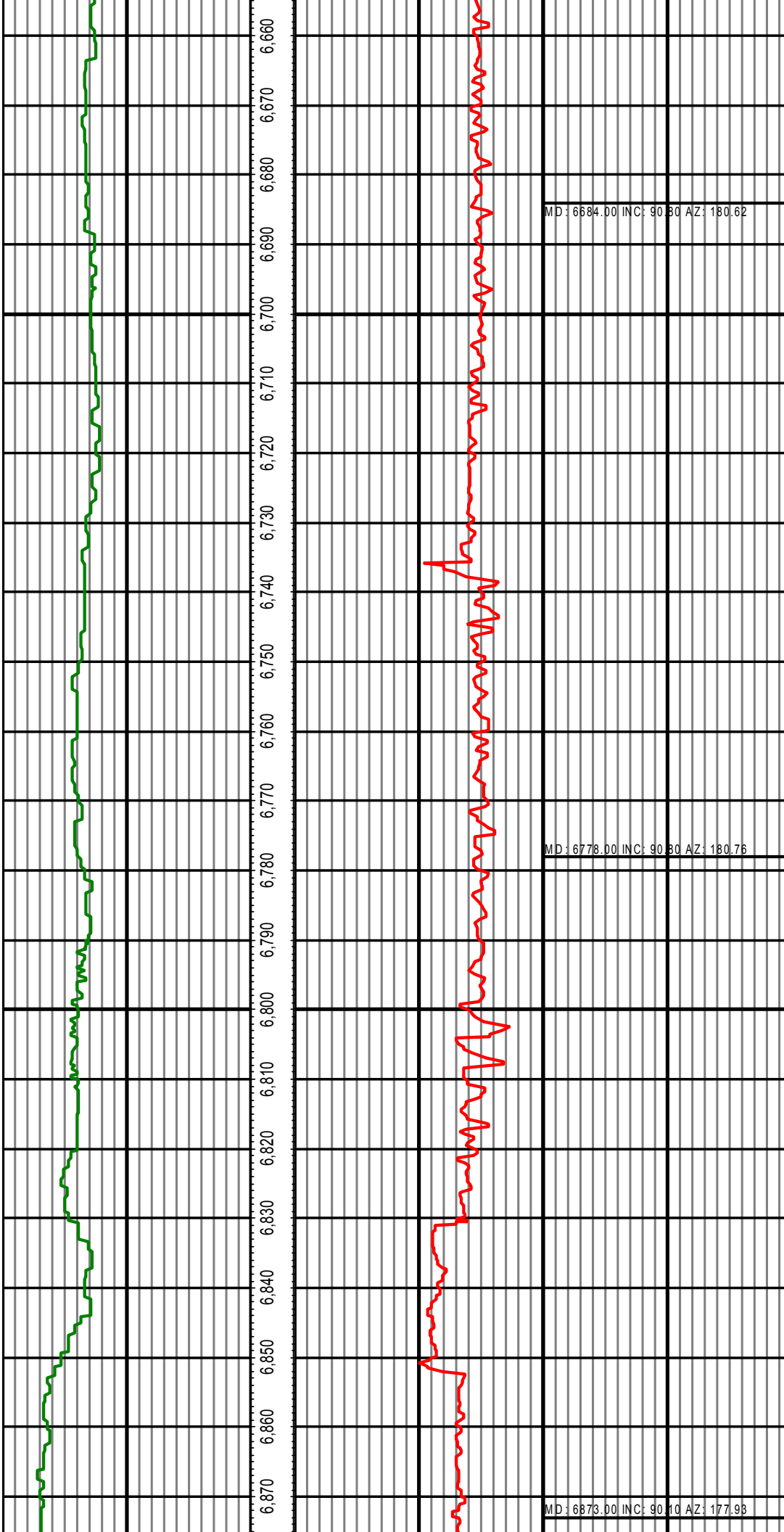


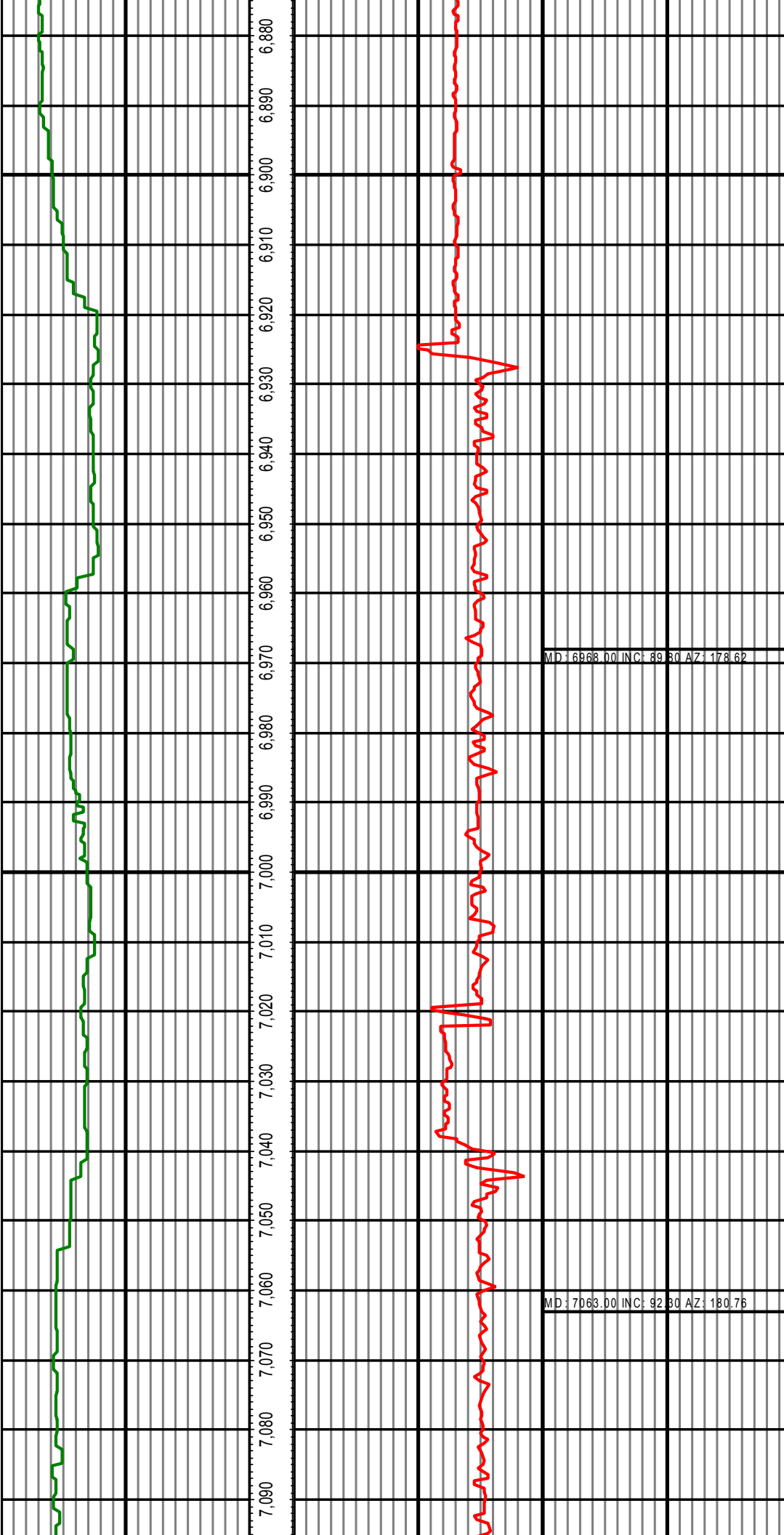


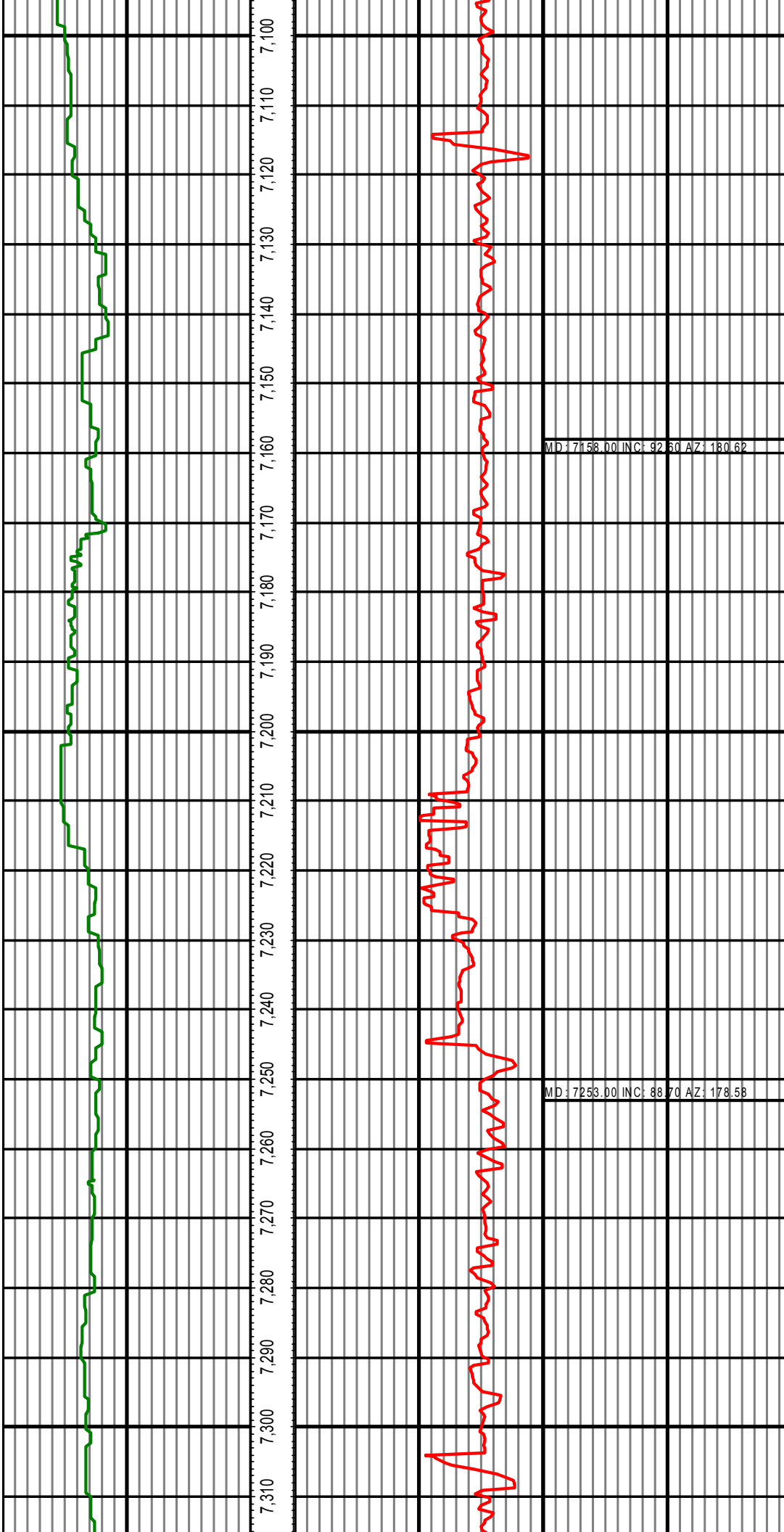


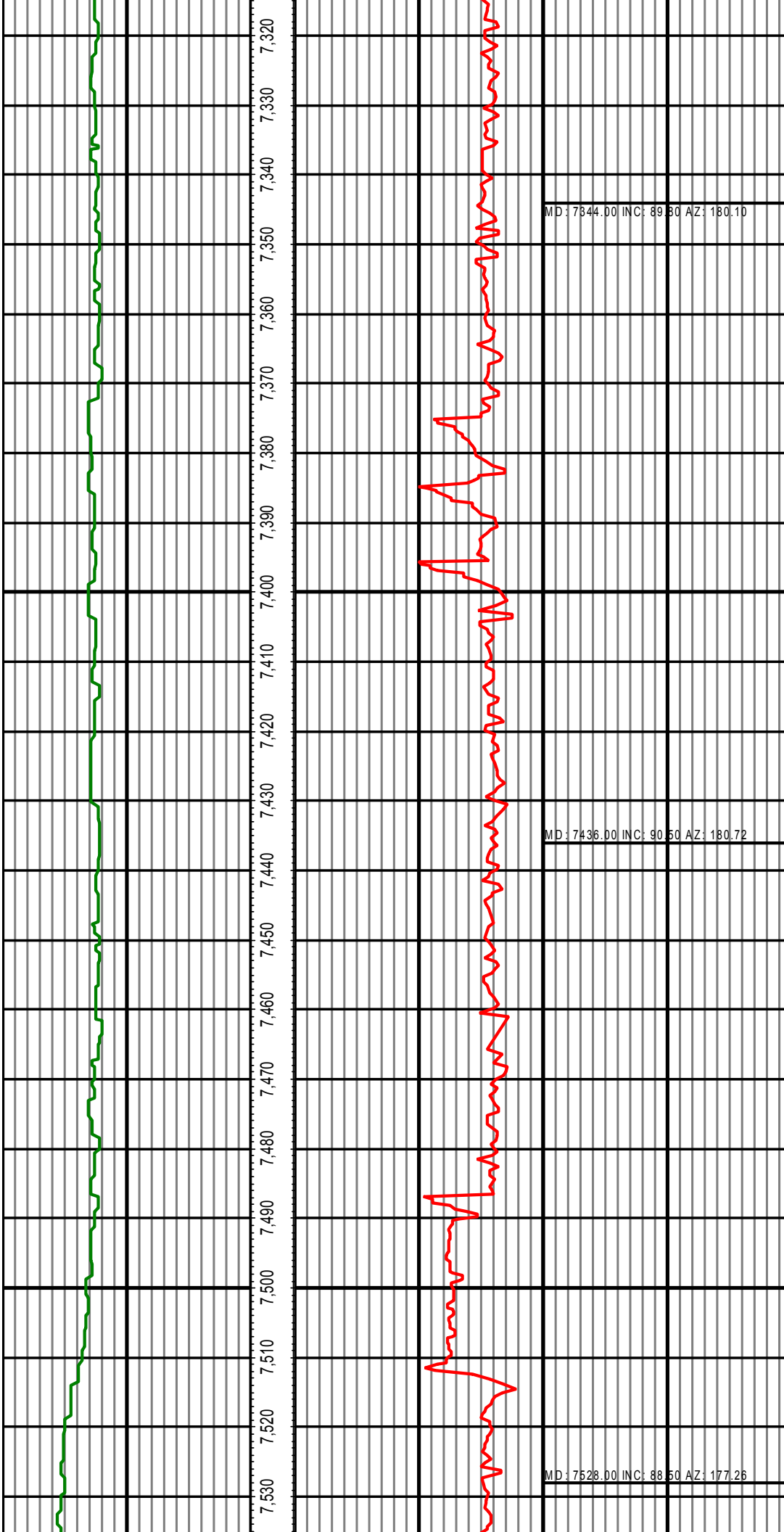


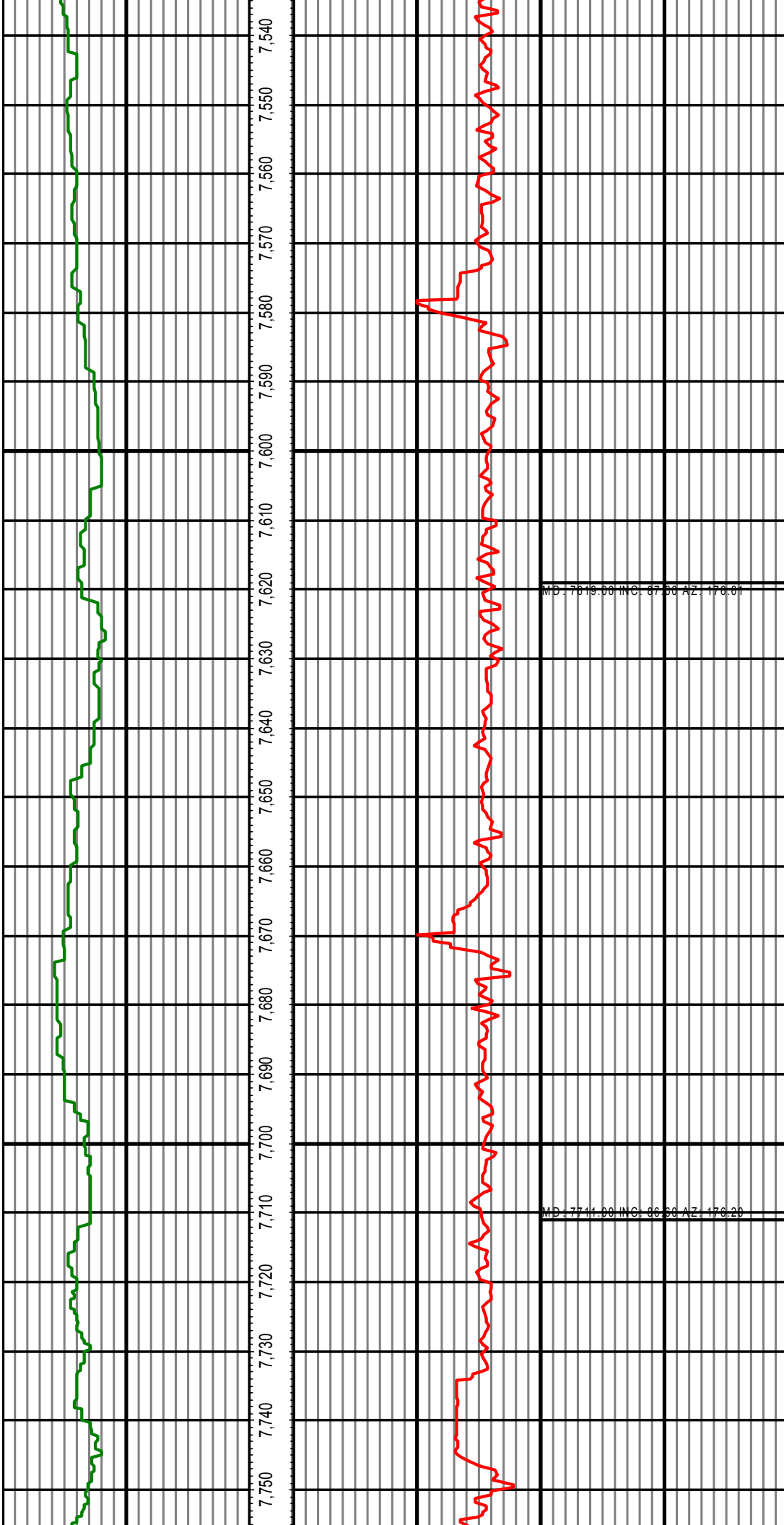


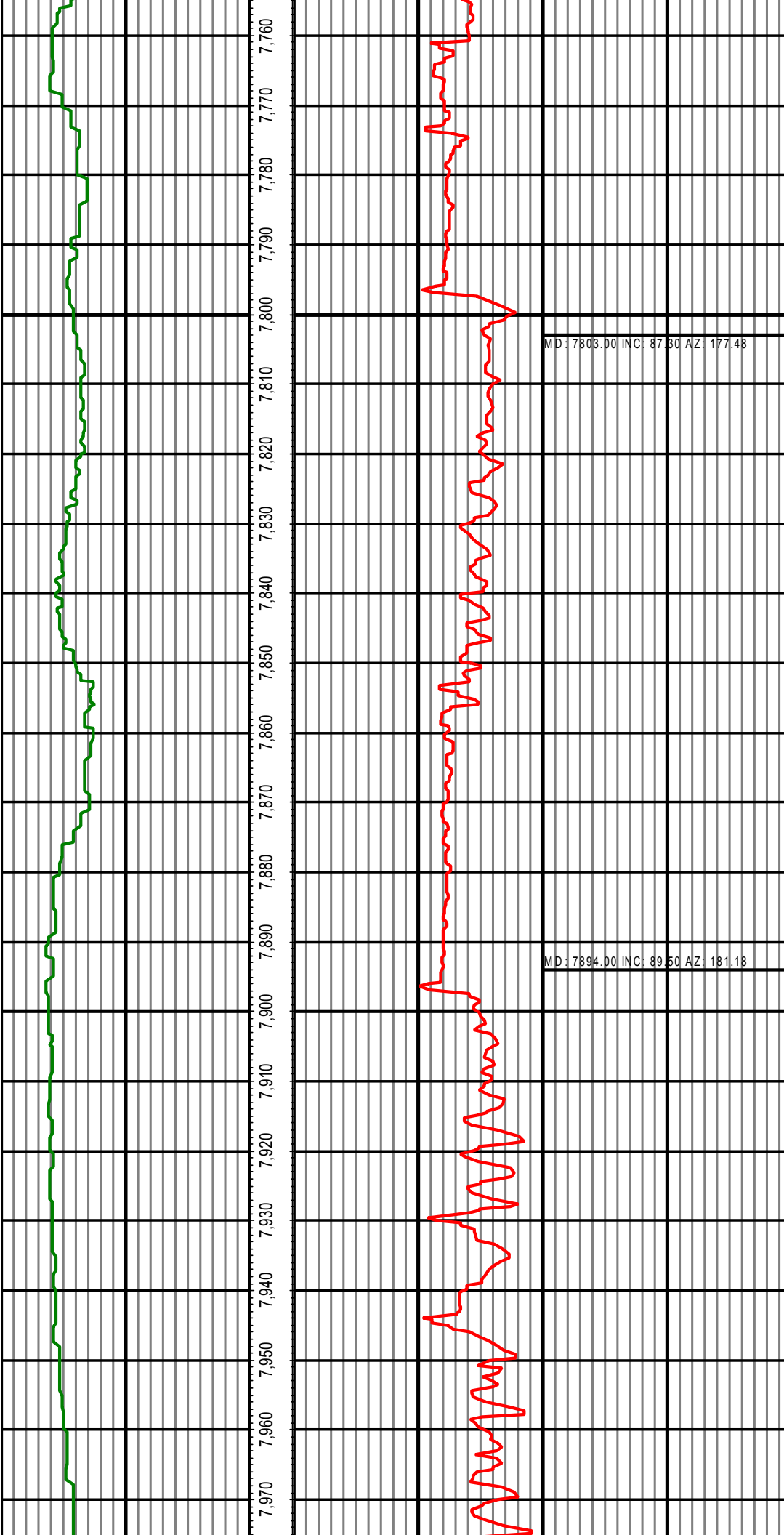








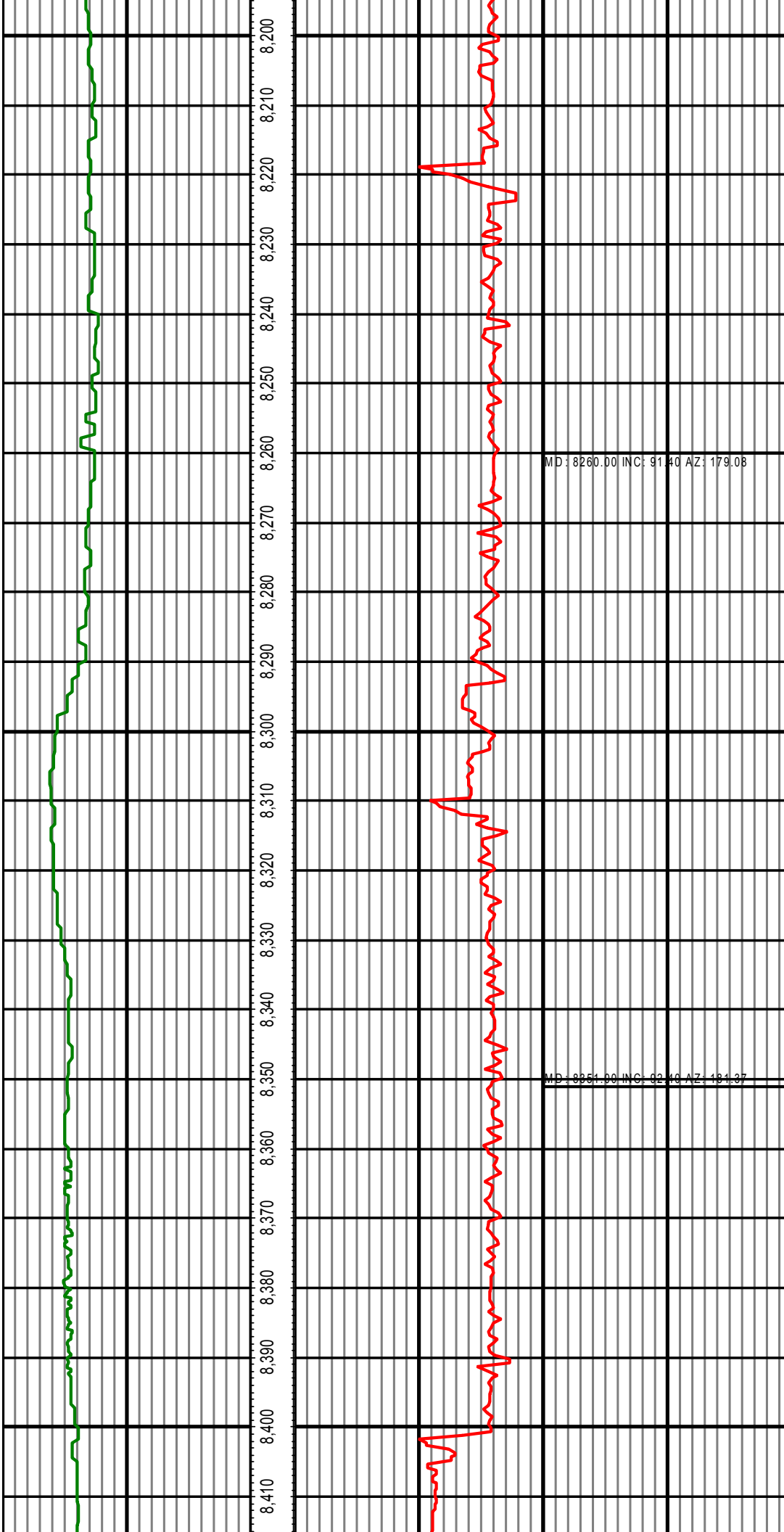


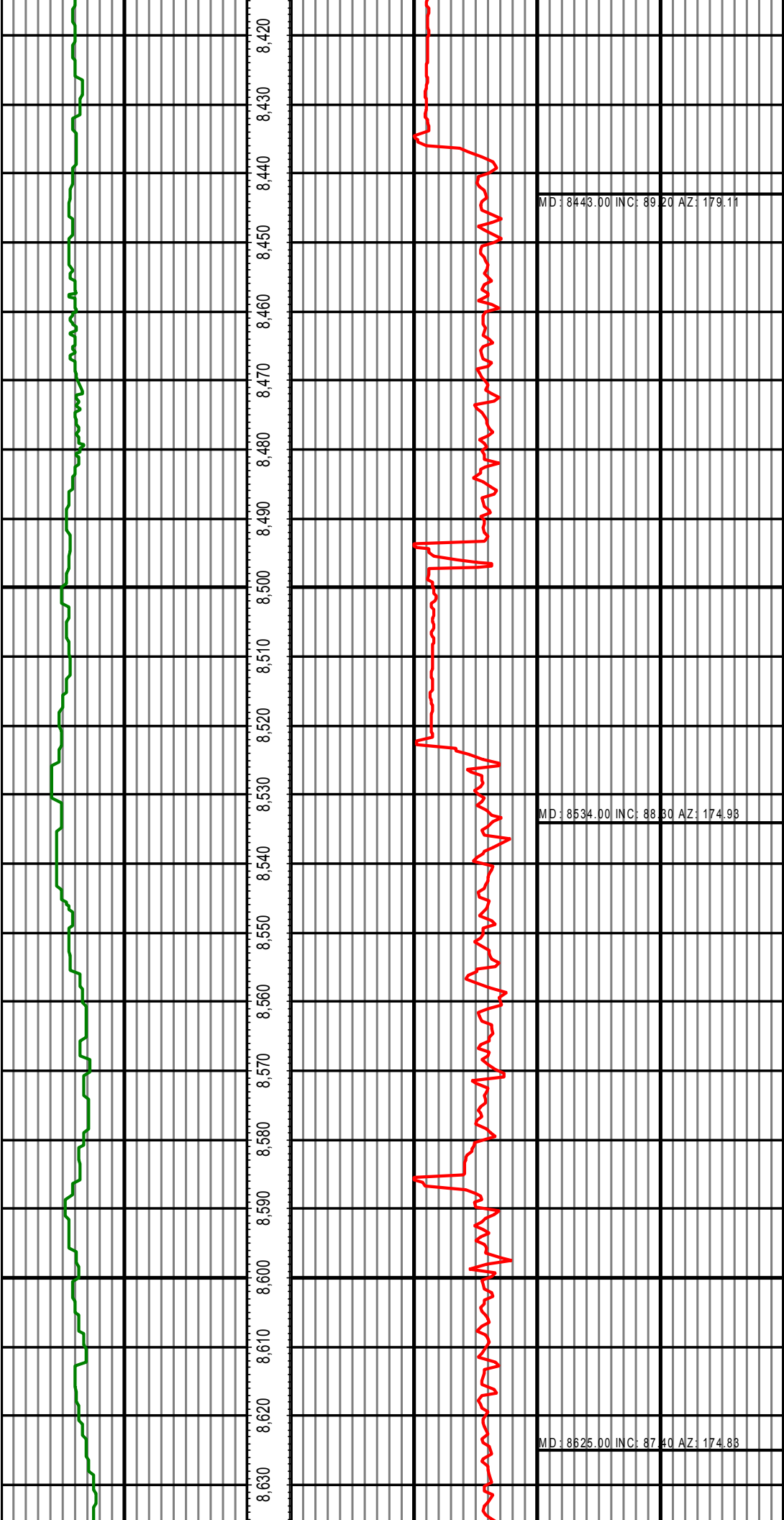


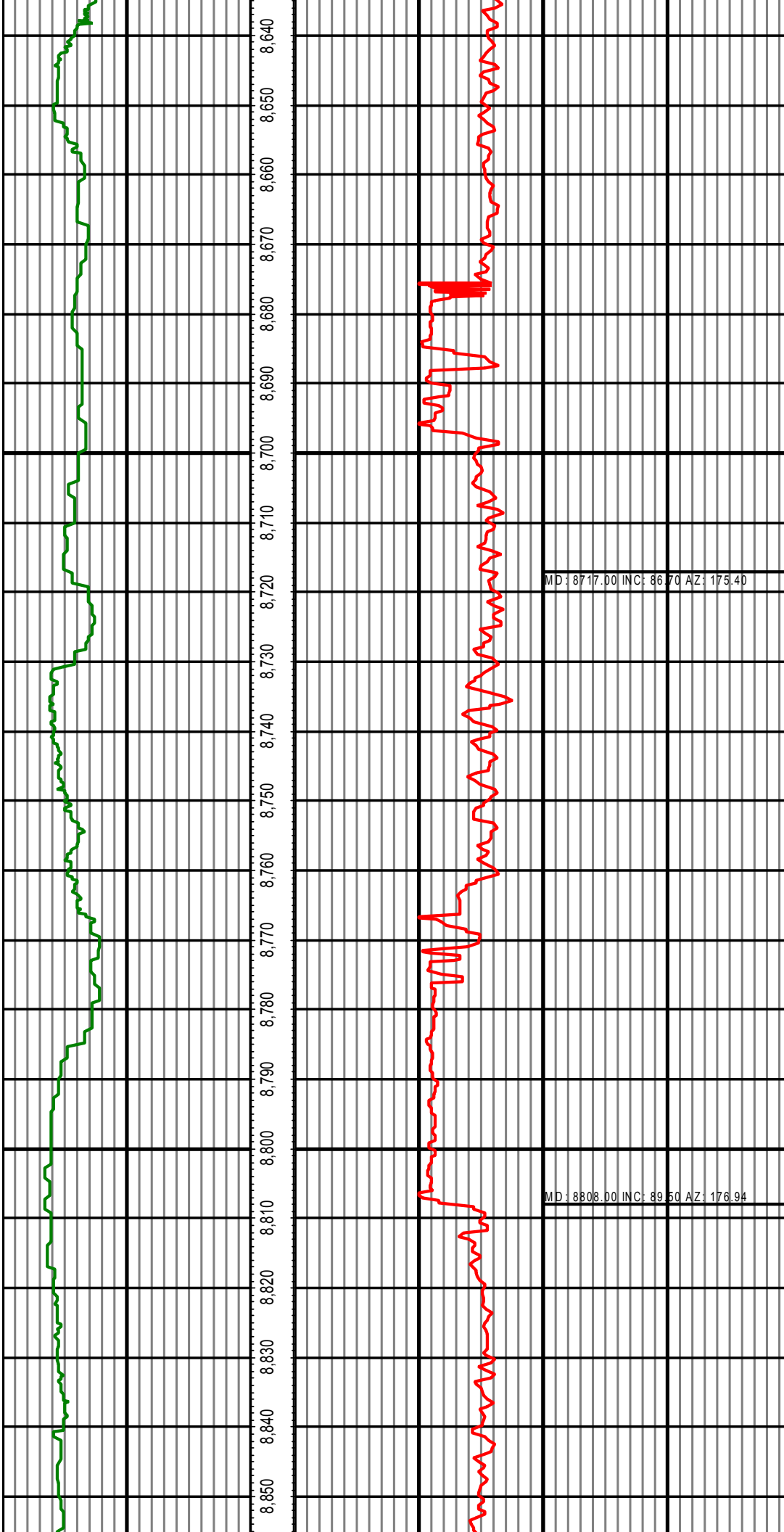
MD: 7985.00 INC: 90.50 AZ: 182.28

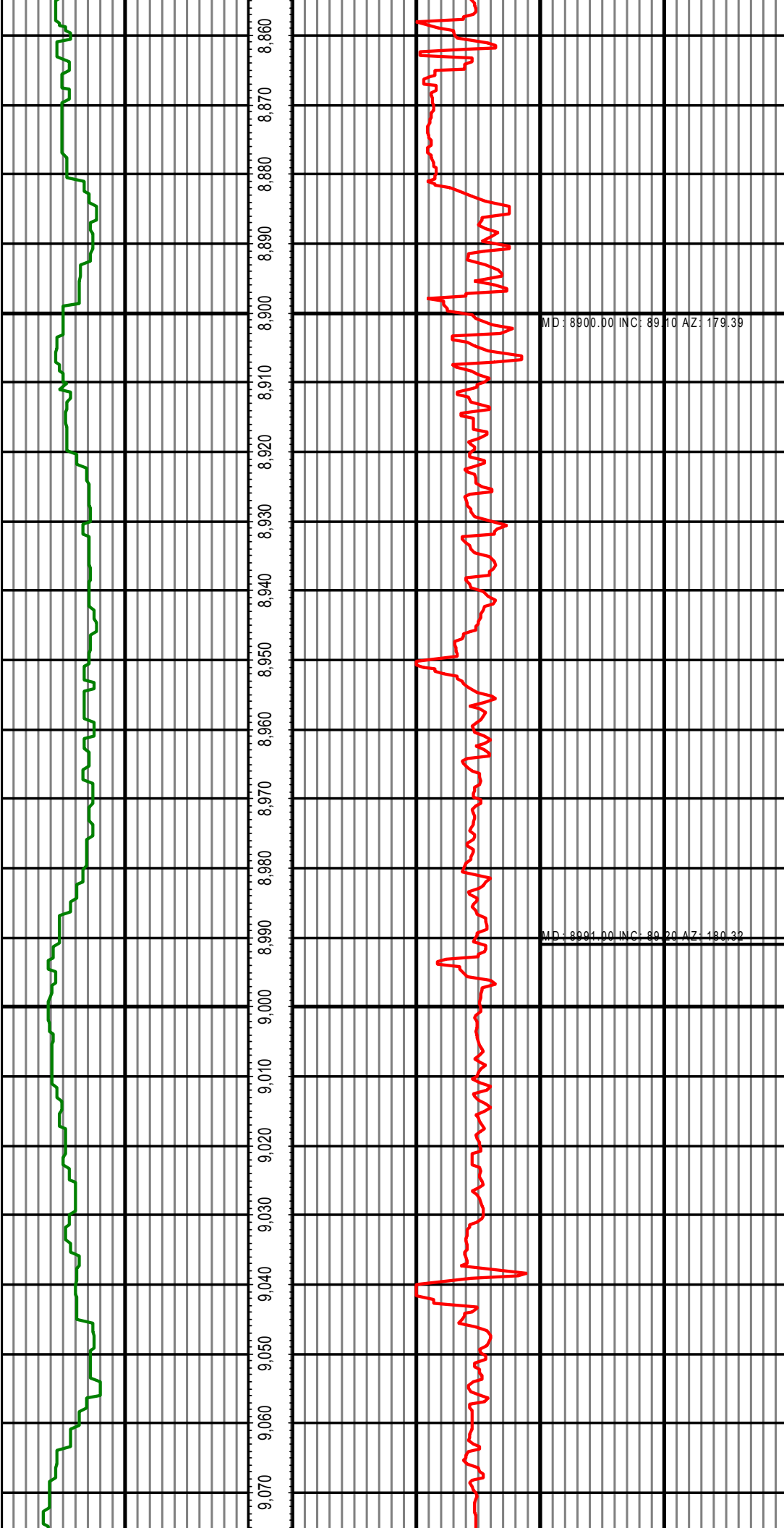
MD: 8076.00 INC: 90.00 AZ: 182.52

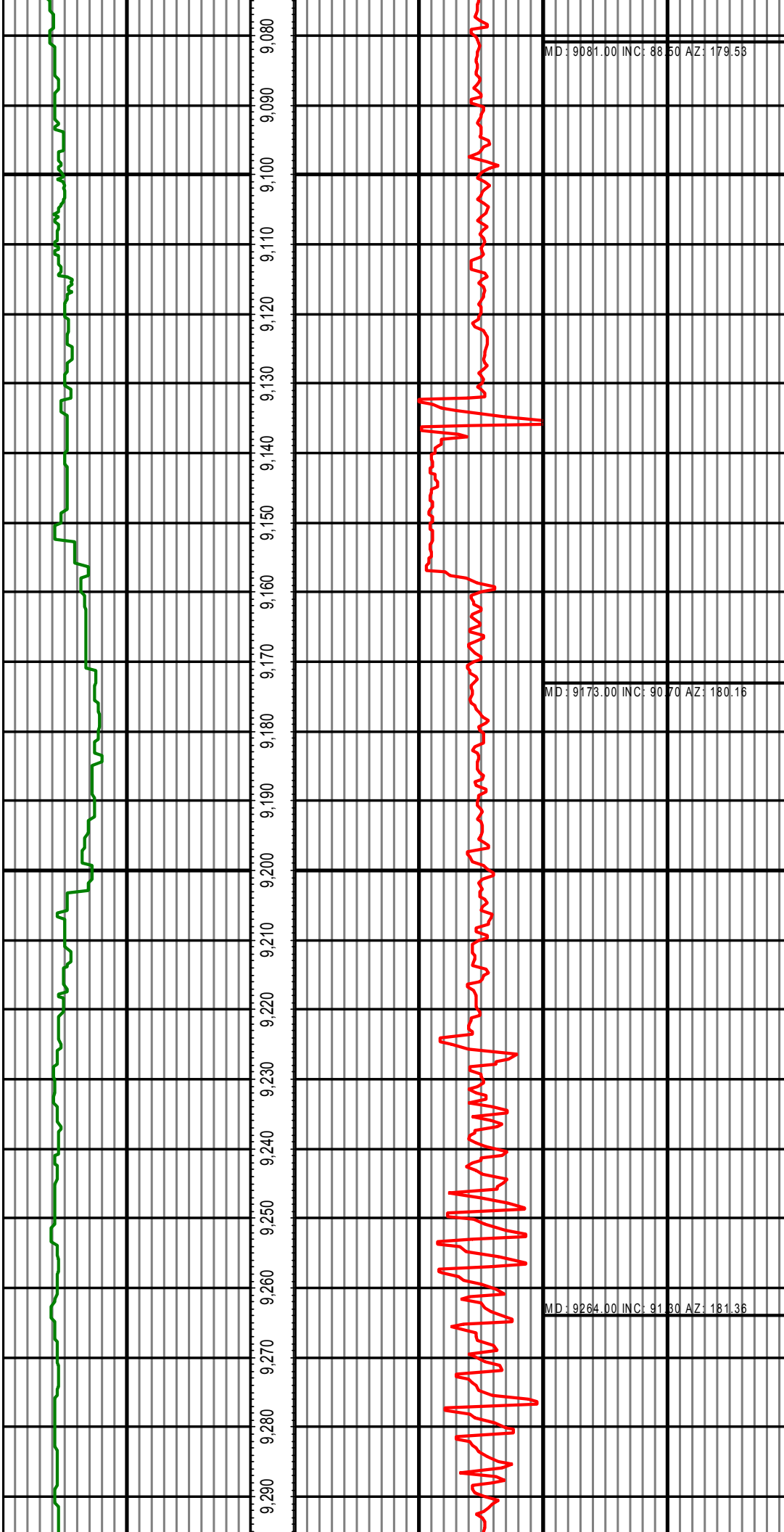
MD: 8168.00 INC: 89.70 AZ: 175.72

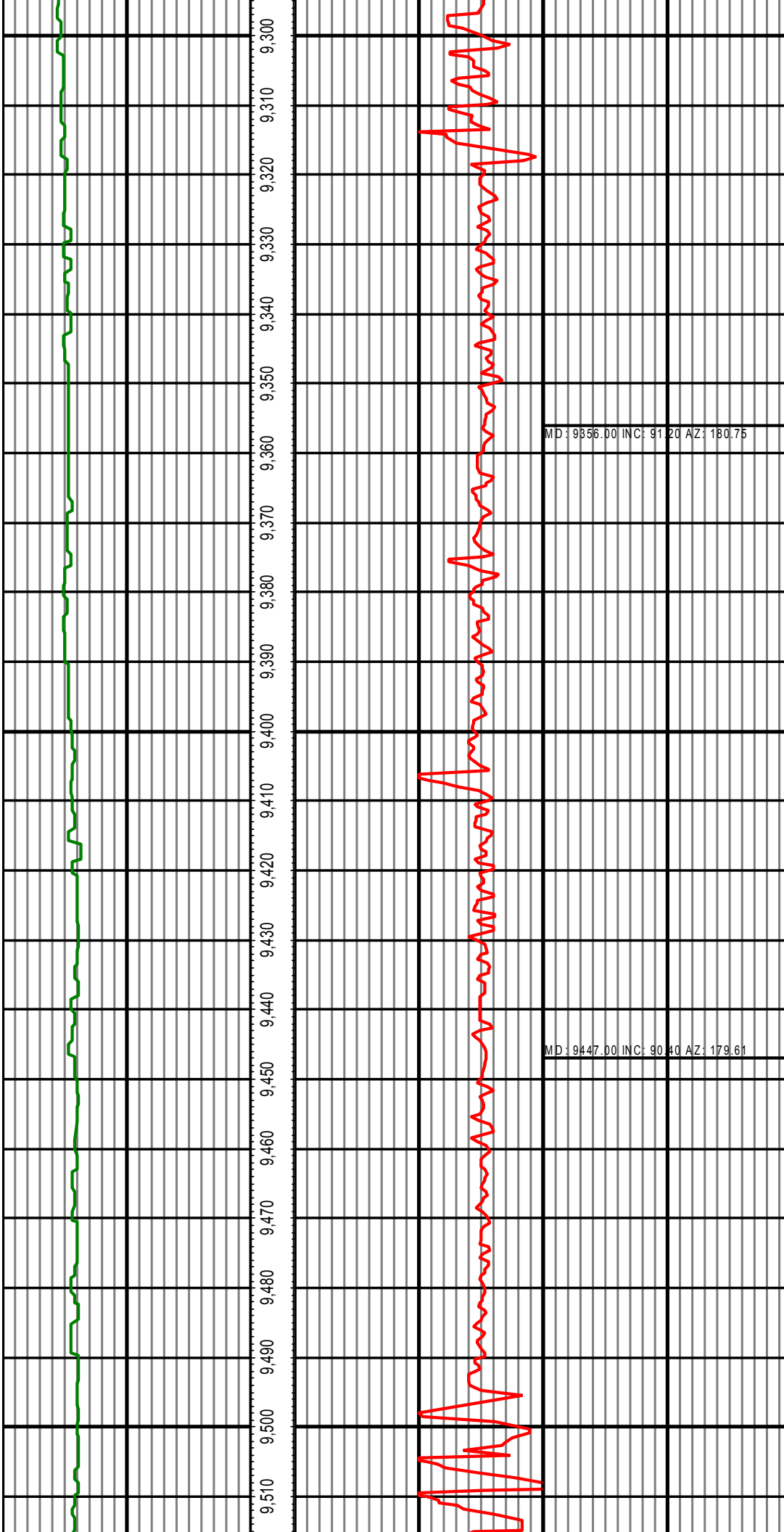


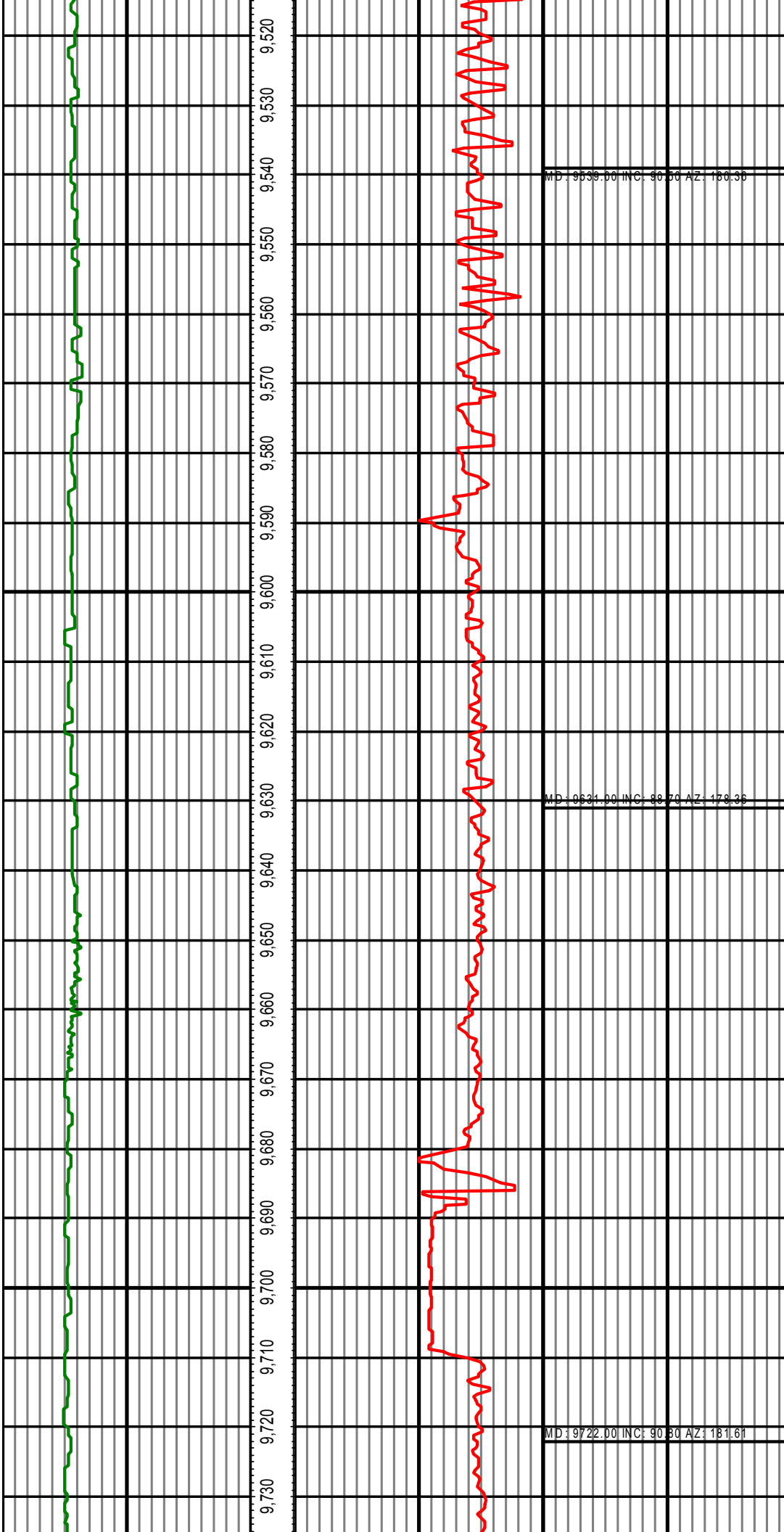


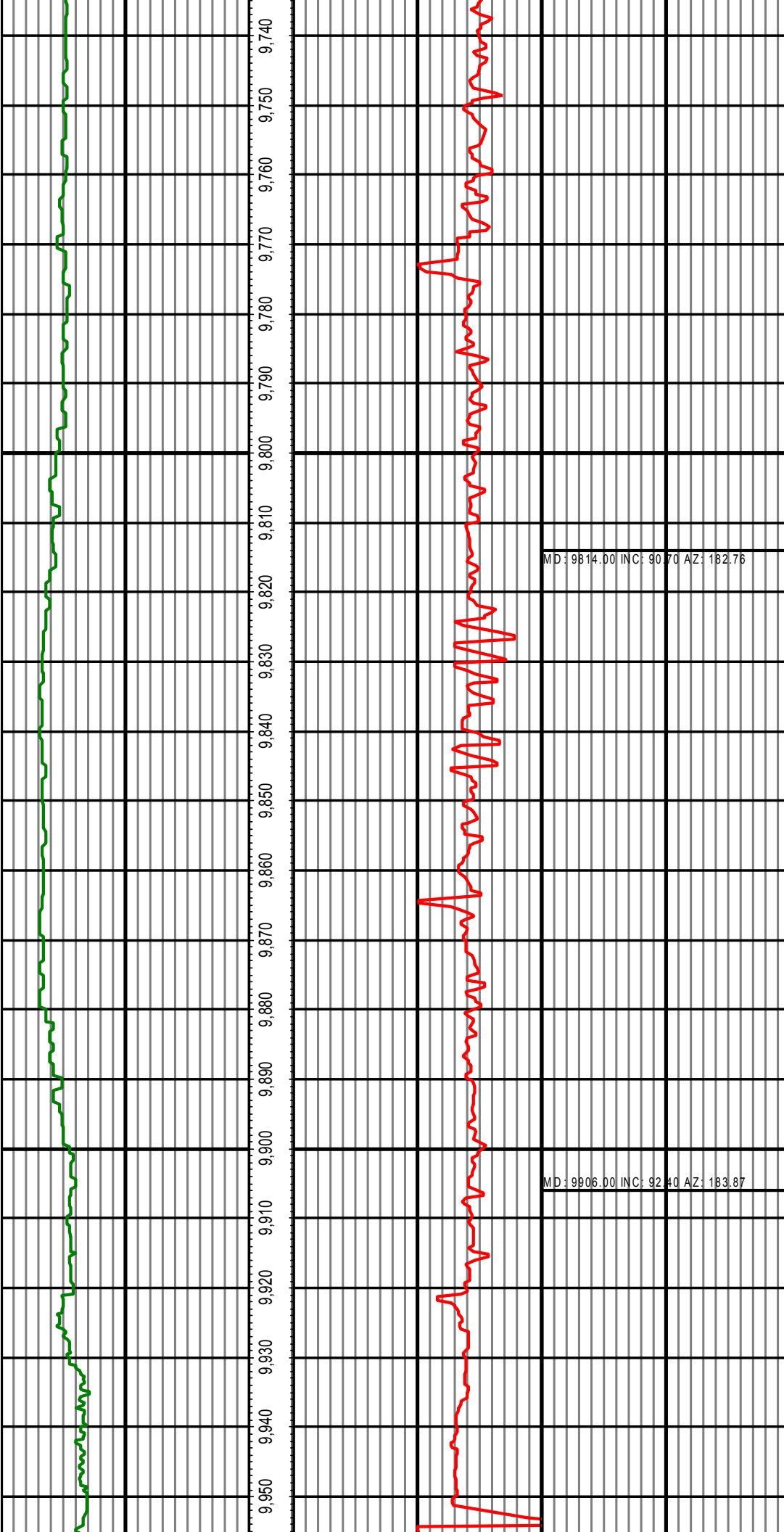


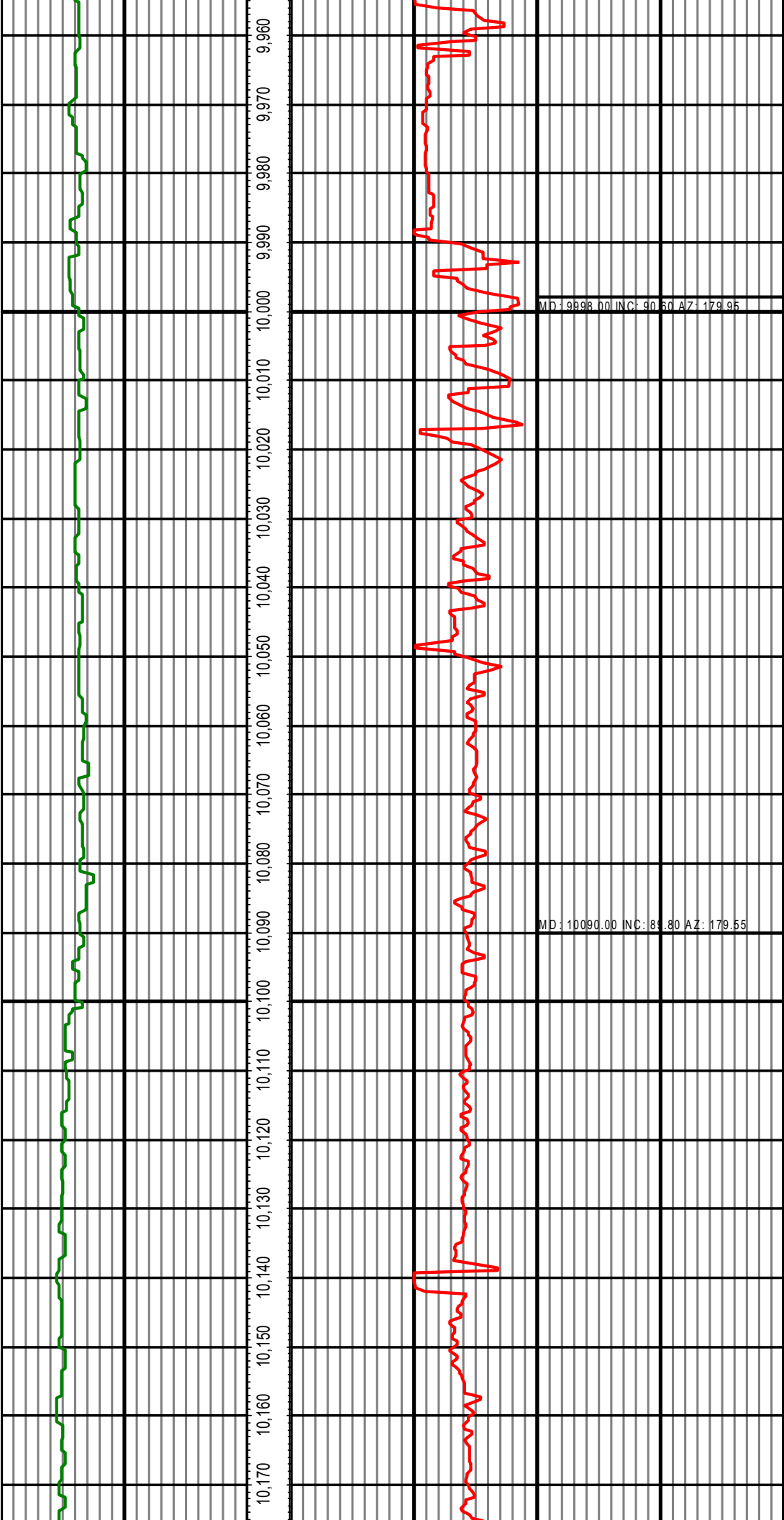


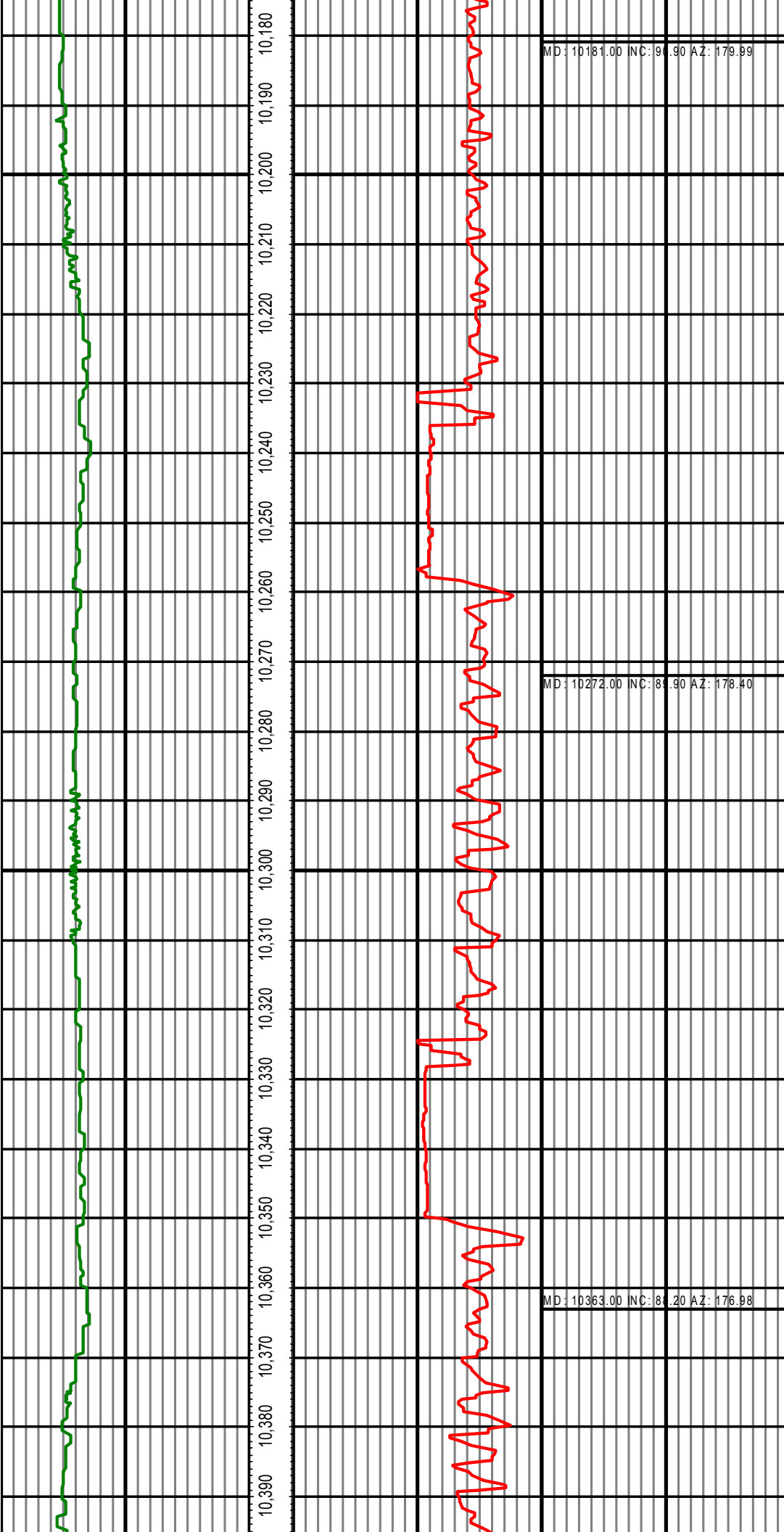


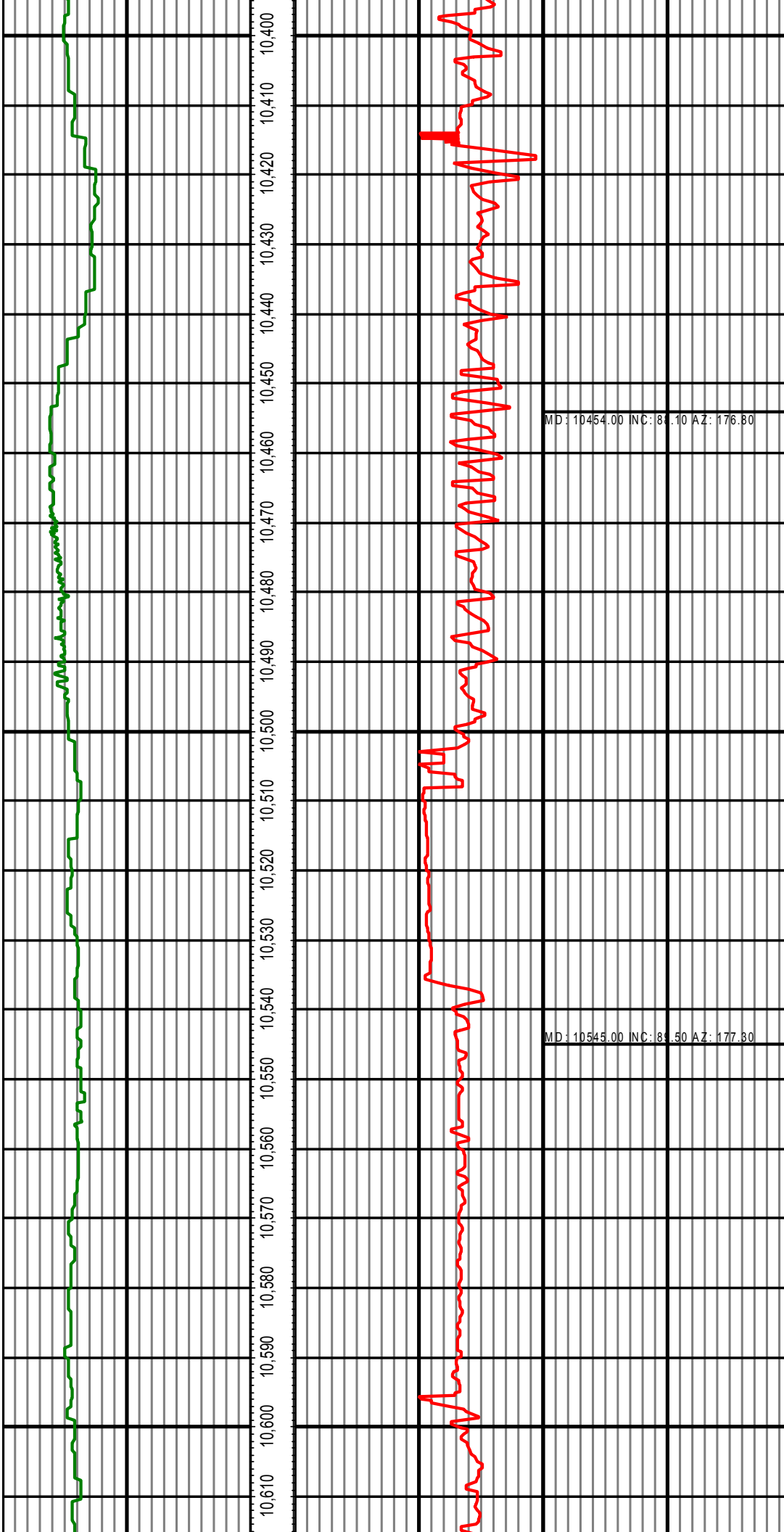


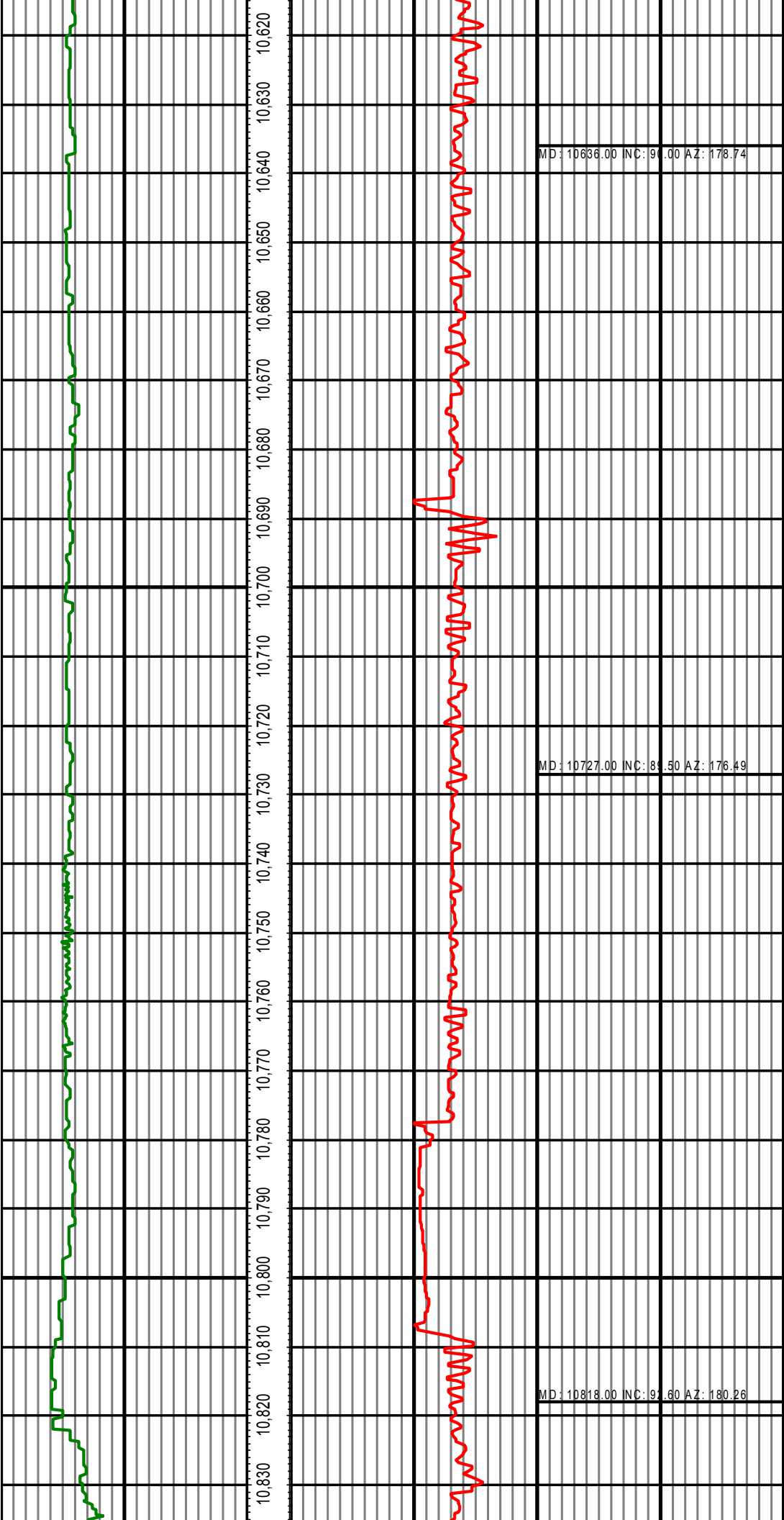


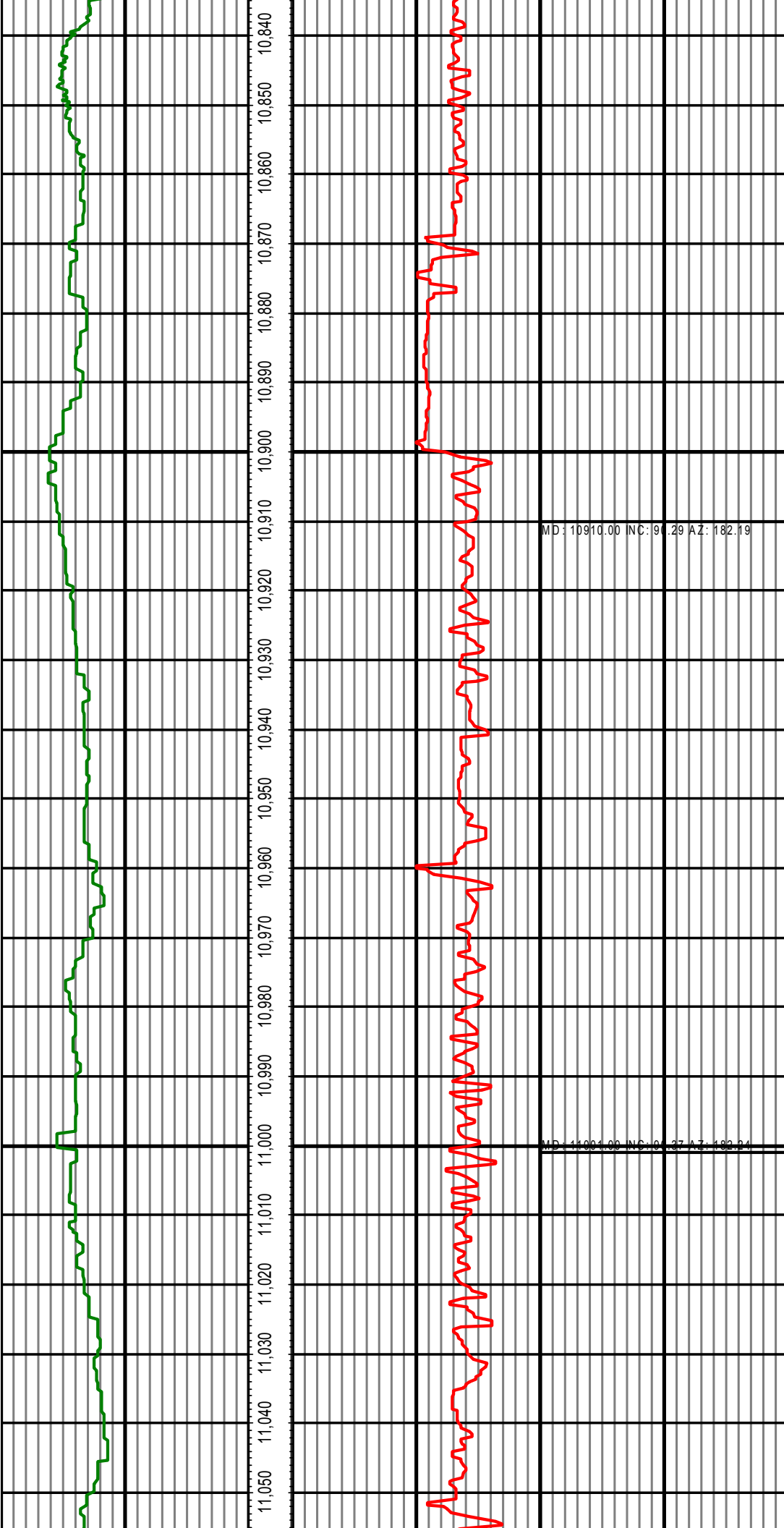


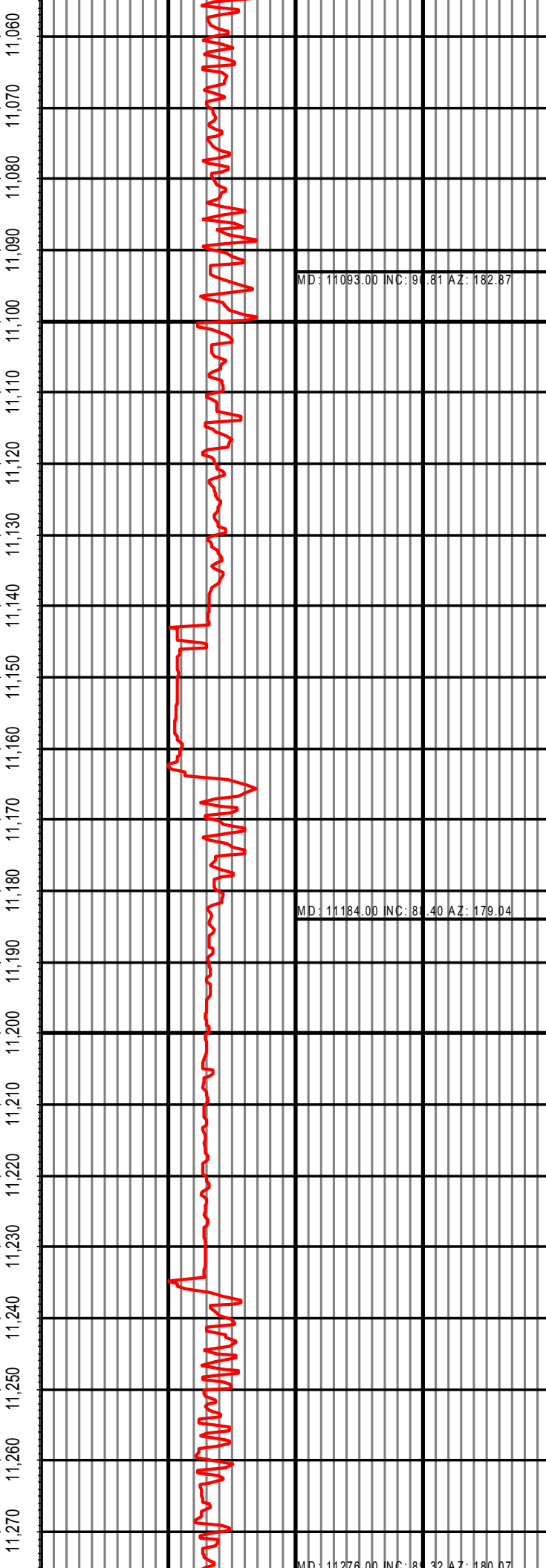
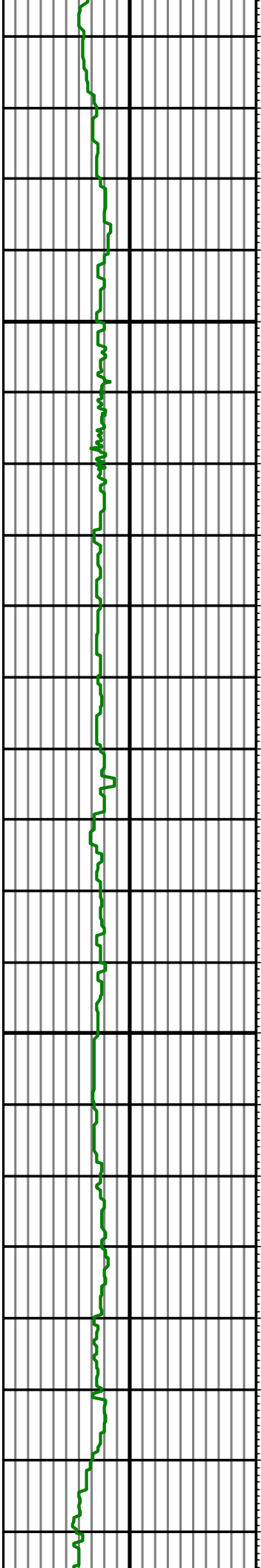








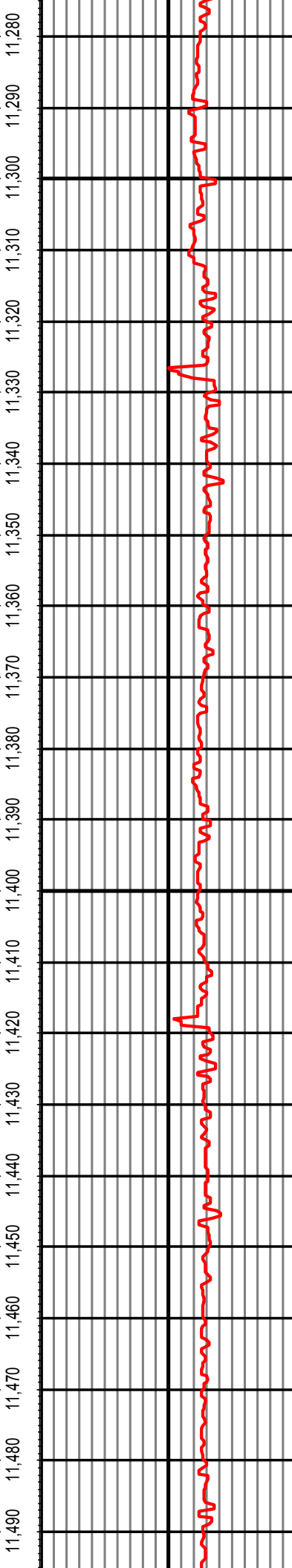
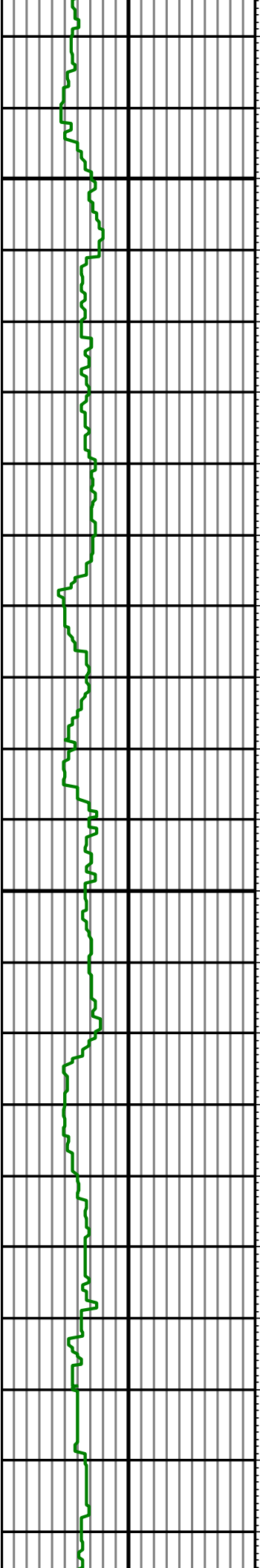




MD: 11093.00 INC: 90.81 AZ: 182.87

MD: 11184.00 INC: 86.40 AZ: 179.04

MD: 11276.00 INC: 86.32 AZ: 180.07



MD: 11276.00	INC: 89.32	AZ: 180.07
MD: 11367.00	INC: 89.41	AZ: 179.99
MD: 11458.00	INC: 89.49	AZ: 180.06

