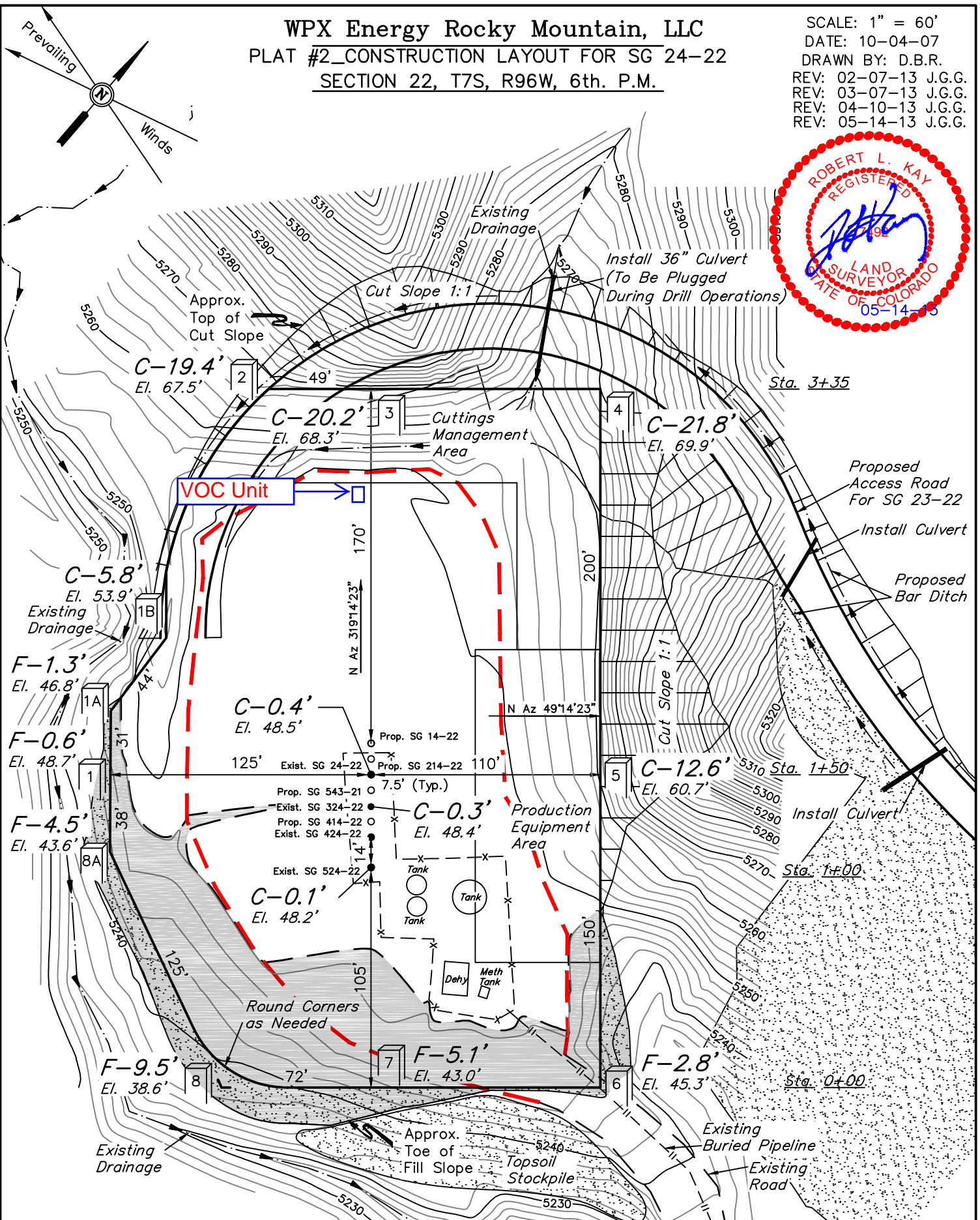
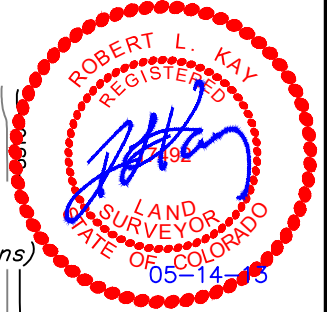


WPX Energy Rocky Mountain, LLC
 PLAT #2_CONSTRUCTION LAYOUT FOR SG 24-22
 SECTION 22, T7S, R96W, 6th. P.M.

SCALE: 1" = 60'
 DATE: 10-04-07
 DRAWN BY: D.B.R.
 REV: 02-07-13 J.G.G.
 REV: 03-07-13 J.G.G.
 REV: 04-10-13 J.G.G.
 REV: 05-14-13 J.G.G.



Note: 2' Contour Intervals
 Elev. Ungraded Ground At 24-22 Loc. Stake = 5248.5'
 FINISHED GRADE ELEV. AT 24-22 LOC. STAKE = 5248.1'

UINTAH ENGINEERING & LAND SURVEYING
 85 So. 200 East * Vernal, Utah 84078 * (435) 789-1017