



RADIAL BOND LOG
GAMMA RAY
CCL

Company		BILL BARRETT CORPORATION					
Well		ANSCHUTZ STATE 5-62-35-6457BH					
Field		WATTENBERG					
County		WELD					
State		COLORADO					
Location:		API # : 05-123-38055					
SHL 600' FSL 600' FEL SE/SE		Other Services					
SEC 35 TWP 5N RGE 62W		Elevation					
Permanent Datum		G.L.					
Log Measured From		K.B. 18'					
Drilling Measured From		K.B. 4598					
		D.F. 4598					
		G.L. 4581					
Date		11-18-2013					
Run Number		ONE					
Depth Driller		10889					
Depth Logger		5807					
Bottom Logged Interval		5804					
Top Log Interval		SURFACE					
Open Hole Size		13.875					
Type Fluid		WATER					
Density / Viscosity		1.0					
Max. Recorded Temp.		200					
Estimated Cement Top		1100'					
Time Well Ready		N/A					
Time Logger on Bottom		N/A					
Equipment Number		4310					
Location		GREELEY CO.					
Recorded By		N. BREHMER					
Witnessed By		J. HARTNETT					
Borehole Record		Tubing Record					
Run Number	Bit	From	To	Size	Weight	From	To
Casing Record	Size		Wgt/Ft	Top		Bottom	
Surface String	9 5/8		36#	0'		855'	
Prot. String							
Production String	7		26	0'		6600'	
Liner	4 1/2		11.6#	5668		10889	

<<< Fold Here >>>

All interpretations are opinions based on inferences from electrical or other measurements and we cannot and do not guarantee the accuracy or correctness of any interpretation, and we shall not, except in the case of gross or willful negligence on our part, be liable or responsible for any loss, costs, damages, or expenses incurred or sustained by anyone resulting from any interpretation made by any of our officers, agents or employees. These interpretations are also subject to our general terms and conditions set out in our current Price Schedule.

Comments

RAN CBL TO VERIFY CEMENT BOND
CORRELATED TO LINER HANGER @5668
1000 PSI ON WELL

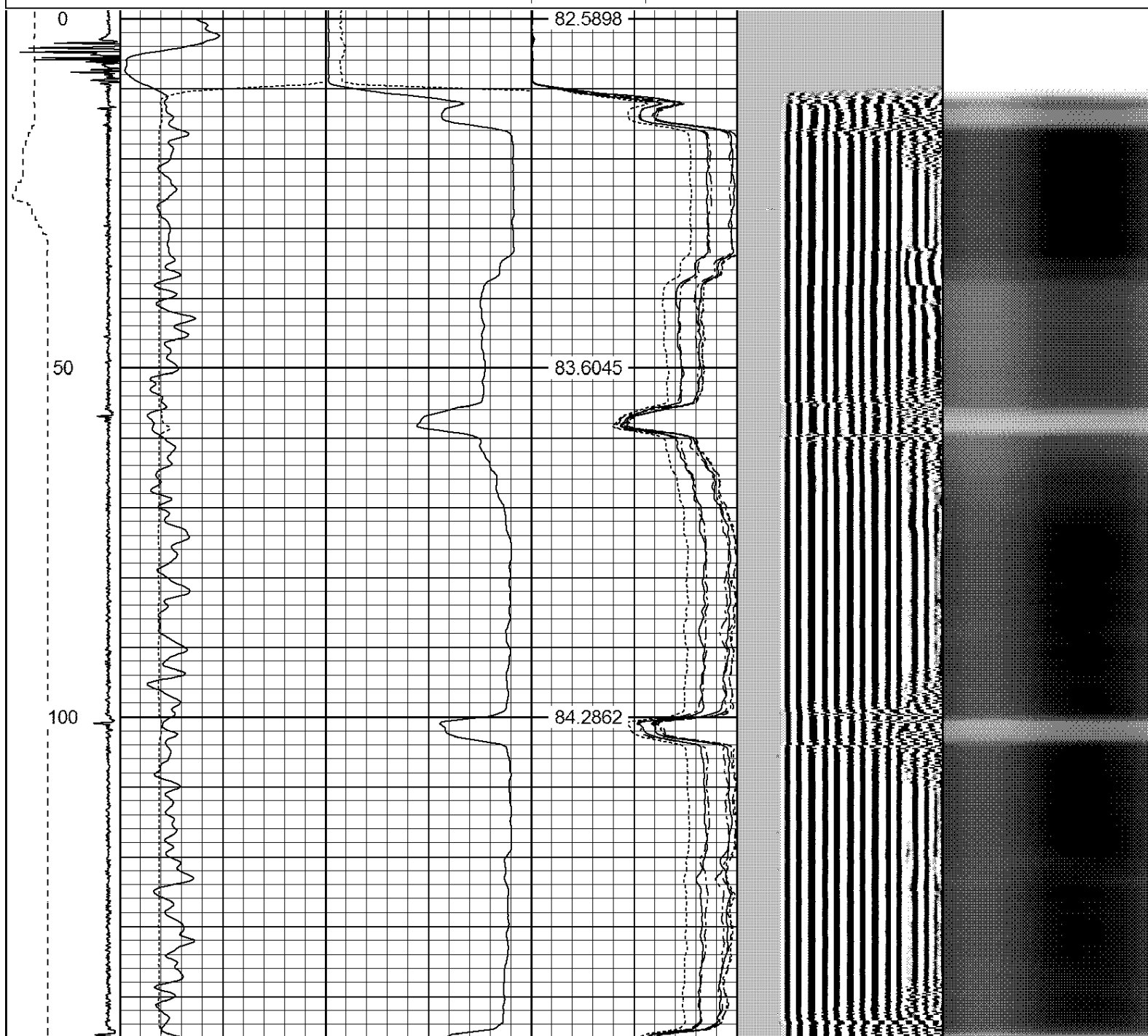
THANK YOU FOR USING WARRIOR ENERGY SERVICES

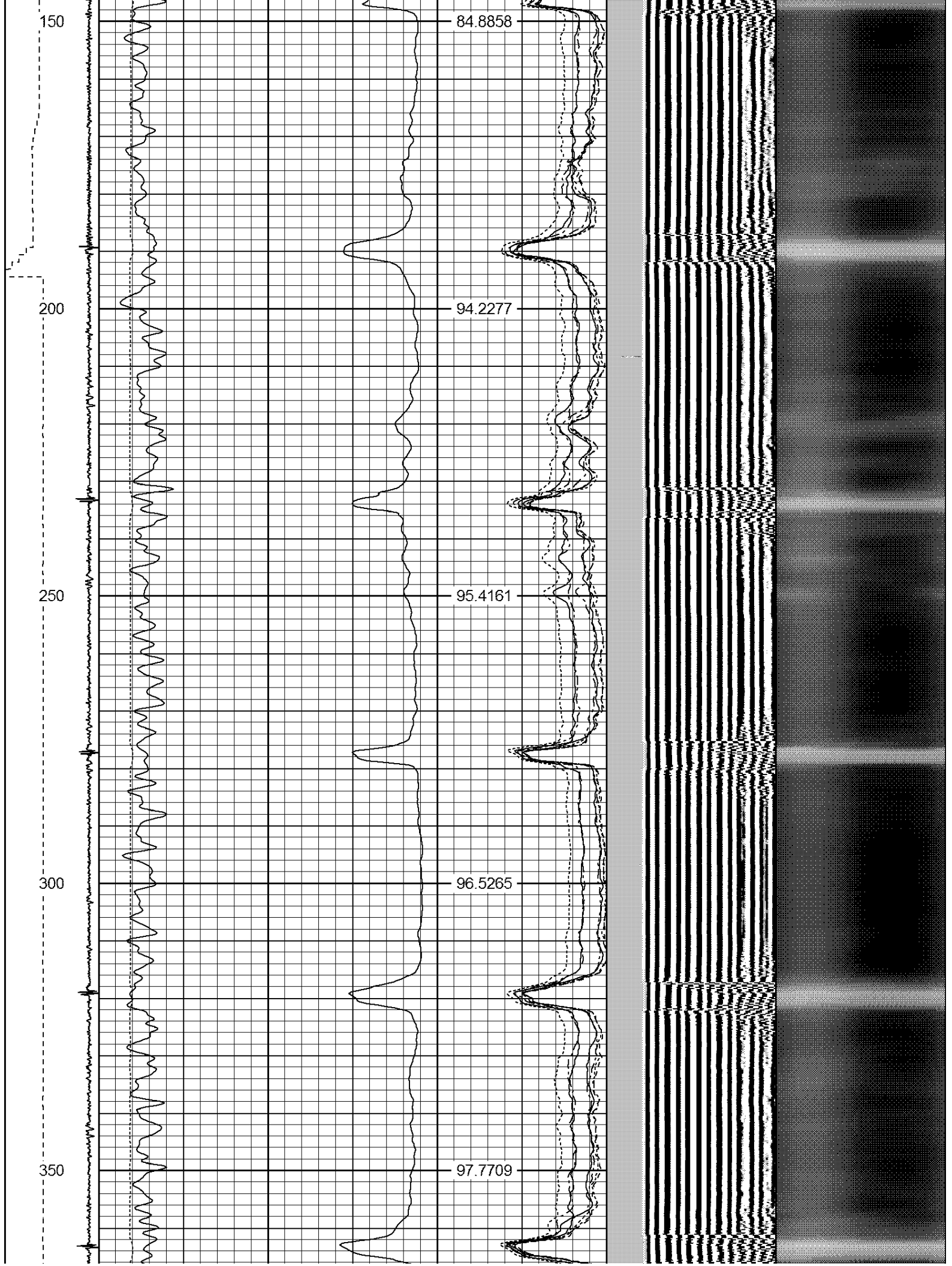
Sensor	Offset (ft)	Schematic	Description	Len (ft)	OD (in)	Wt (lb)

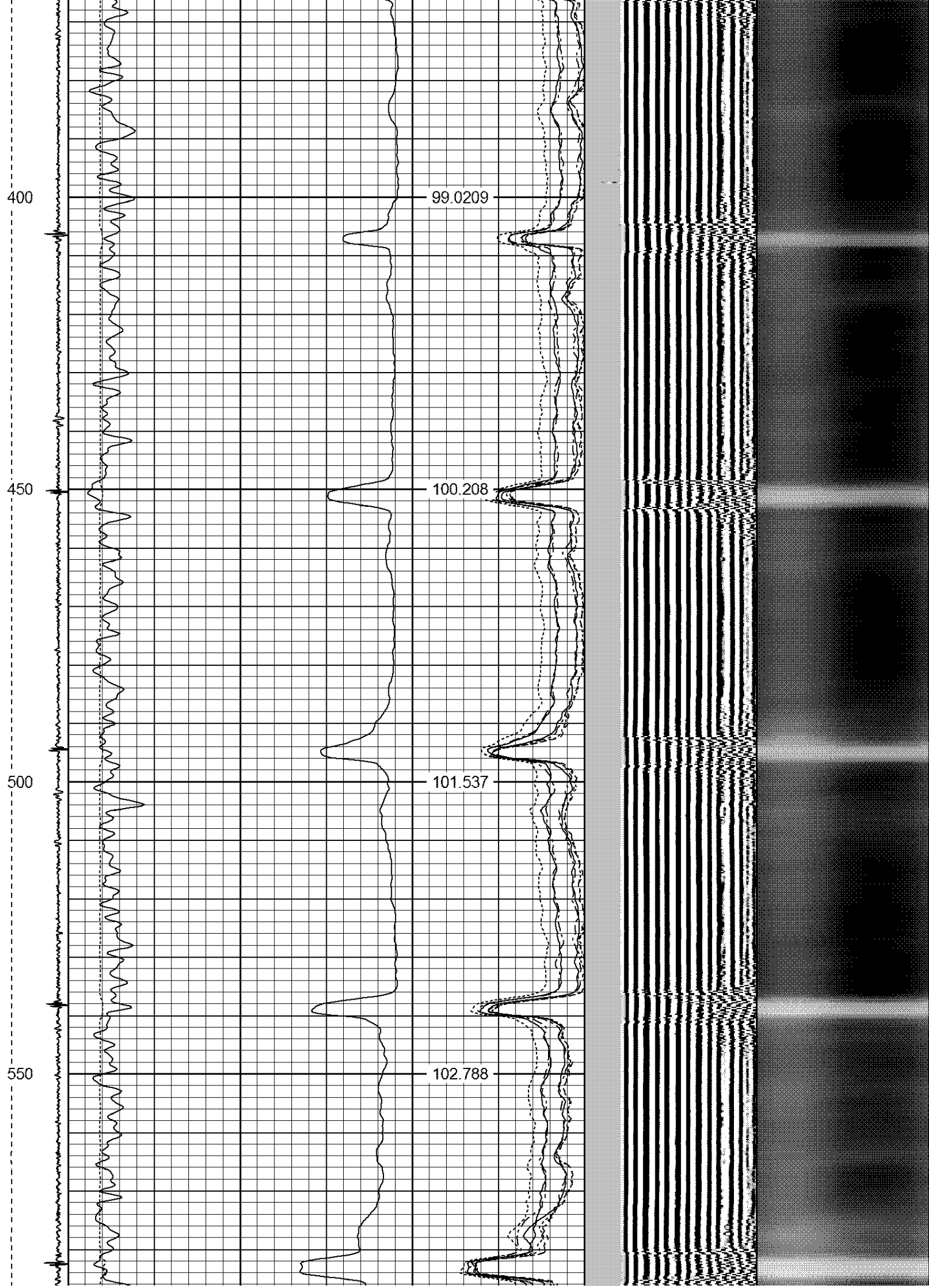

WARRIOR
 ENERGY SERVICES

Database File: anshutz state 5-62-35-6457bh.db
 Dataset Pathname: pass6
 Presentation Format: ips_rbt
 Dataset Creation: Mon Nov 18 11:17:36 2013 by Log 7.0 B1
 Charted by: Depth in Feet scaled 1:240

-9	CCL	1	200	TT (usec)	800	0	AMP (mV)	100	0	AMPS1	100	200	VDL	1200	1	Cement Map	8
LSPD			0	GR (GAPI)	200	0	AMPx5 (mV)	20	0	AMPS2	100				1		100
(ft/min)			200	GR (GAPI)	400				0	AMPS4	100						
0		250							0	AMPS5	100						
									0	AMPS6	100						
									0	AMPS7	100						
									0	AMPS8	100						
										IntTemp							
										(degF)							







600

104.006

650

105.124

700

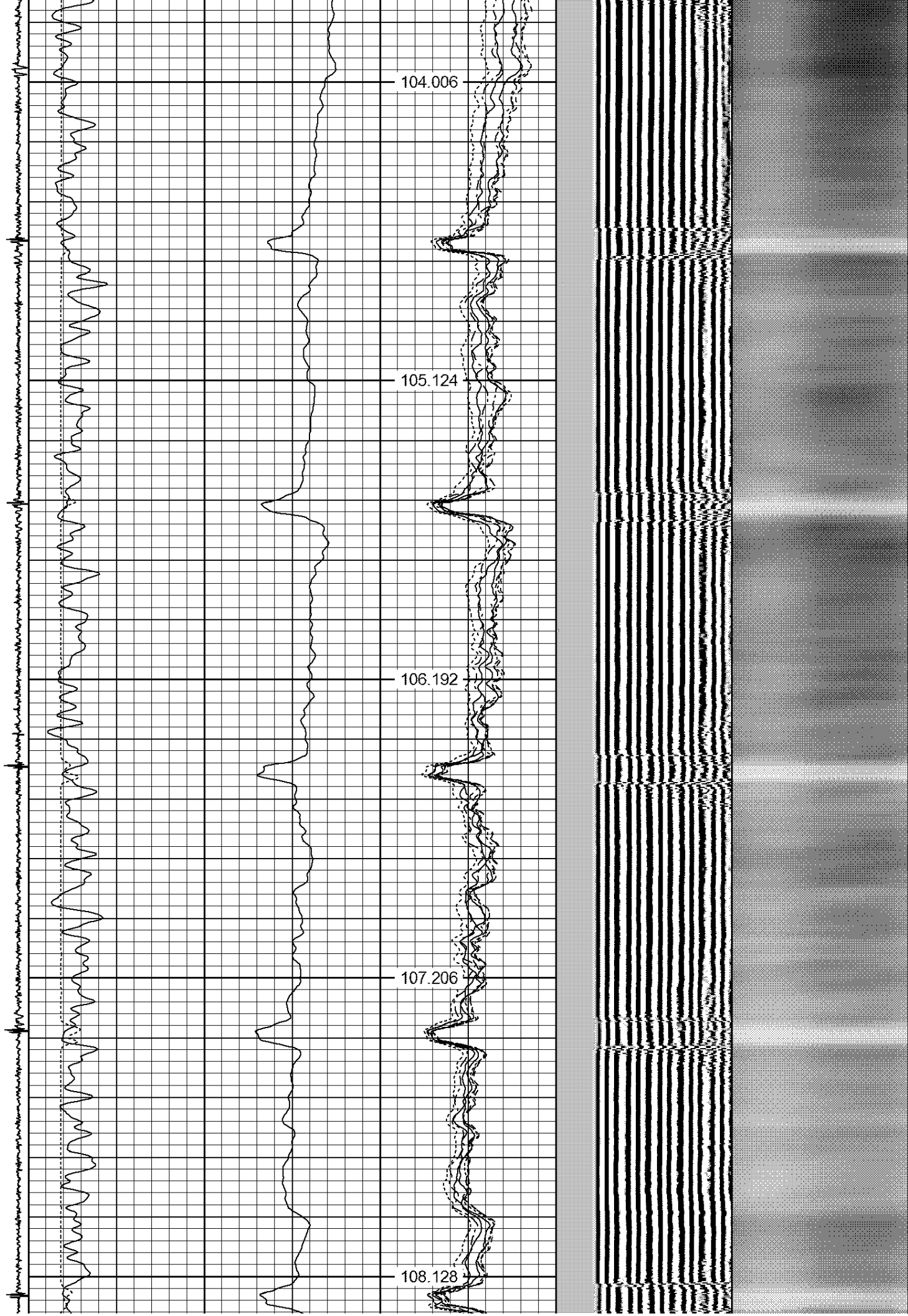
106.192

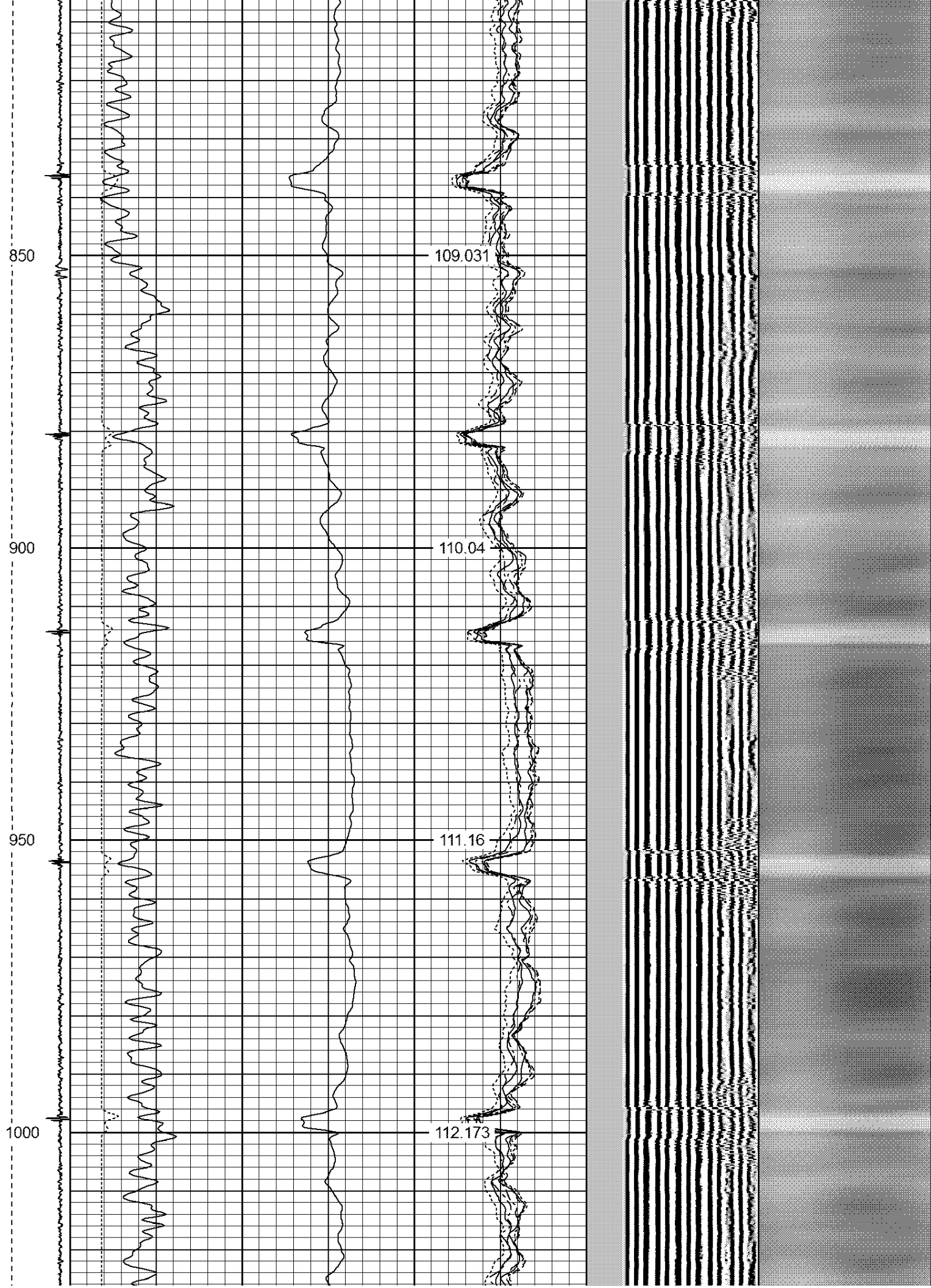
750

107.206

800

108.128





1050

1100

1150

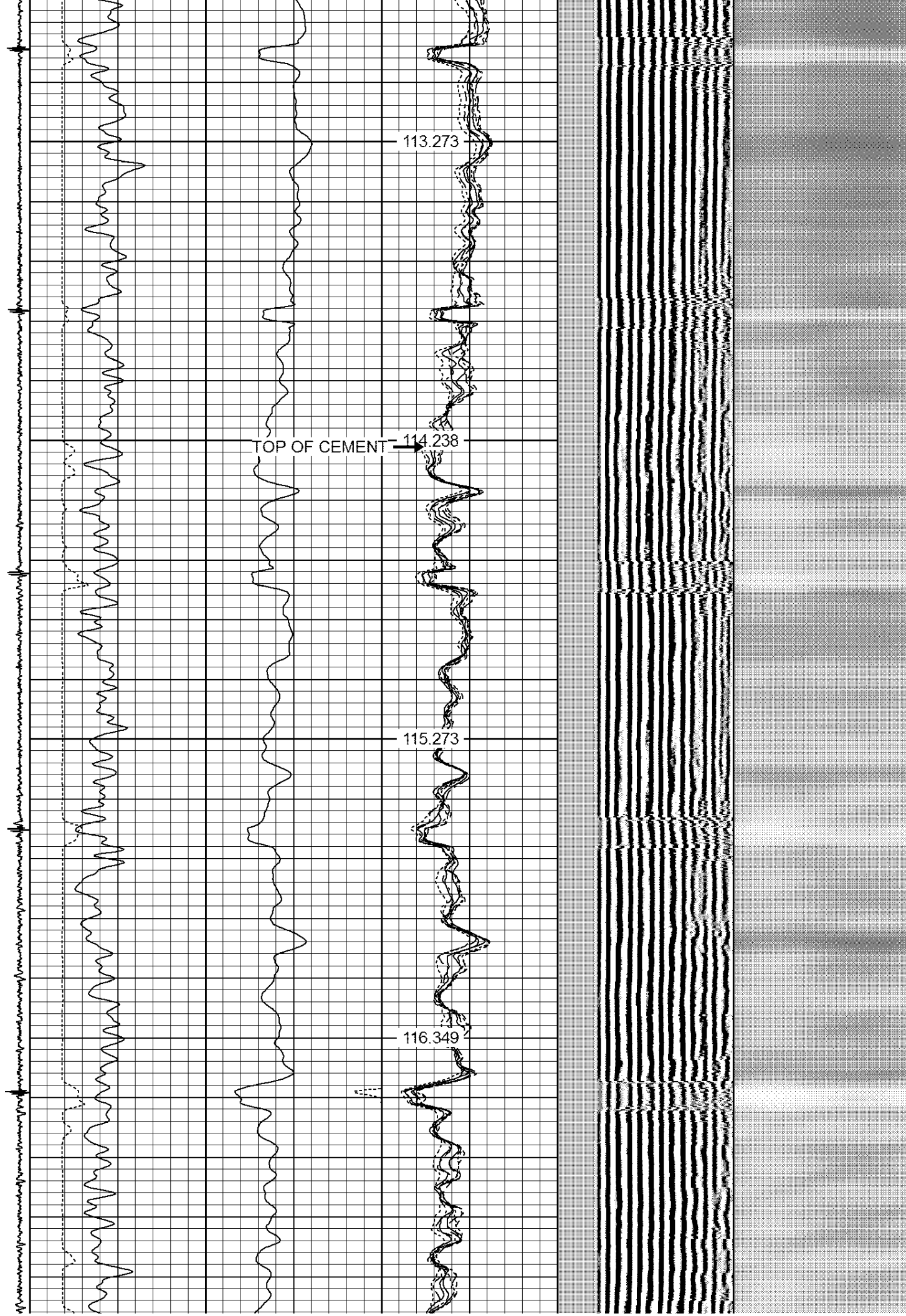
1200

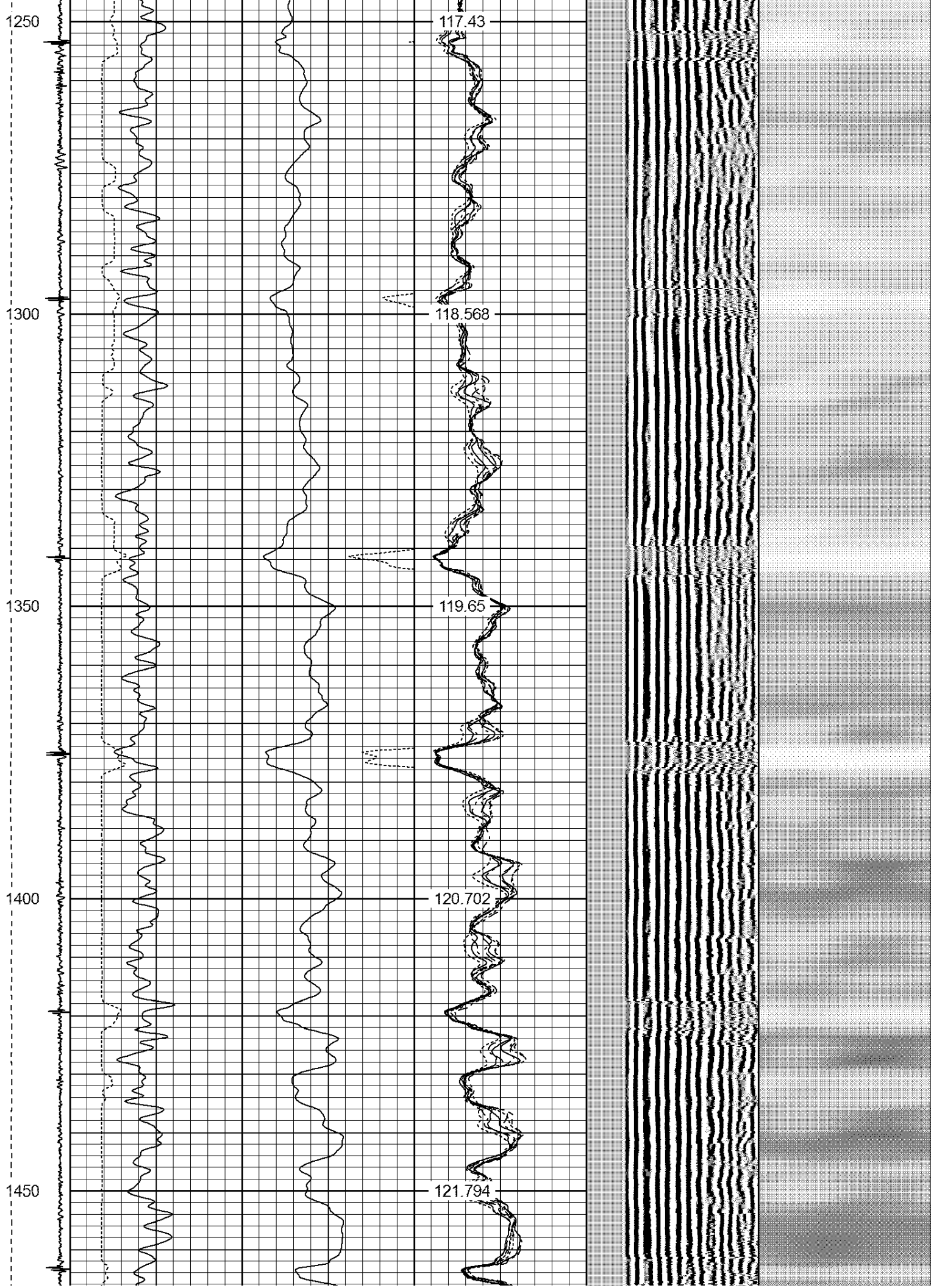
113.273

TOP OF CEMENT → 114.238

115.273

116.349





1500

122.849

1550

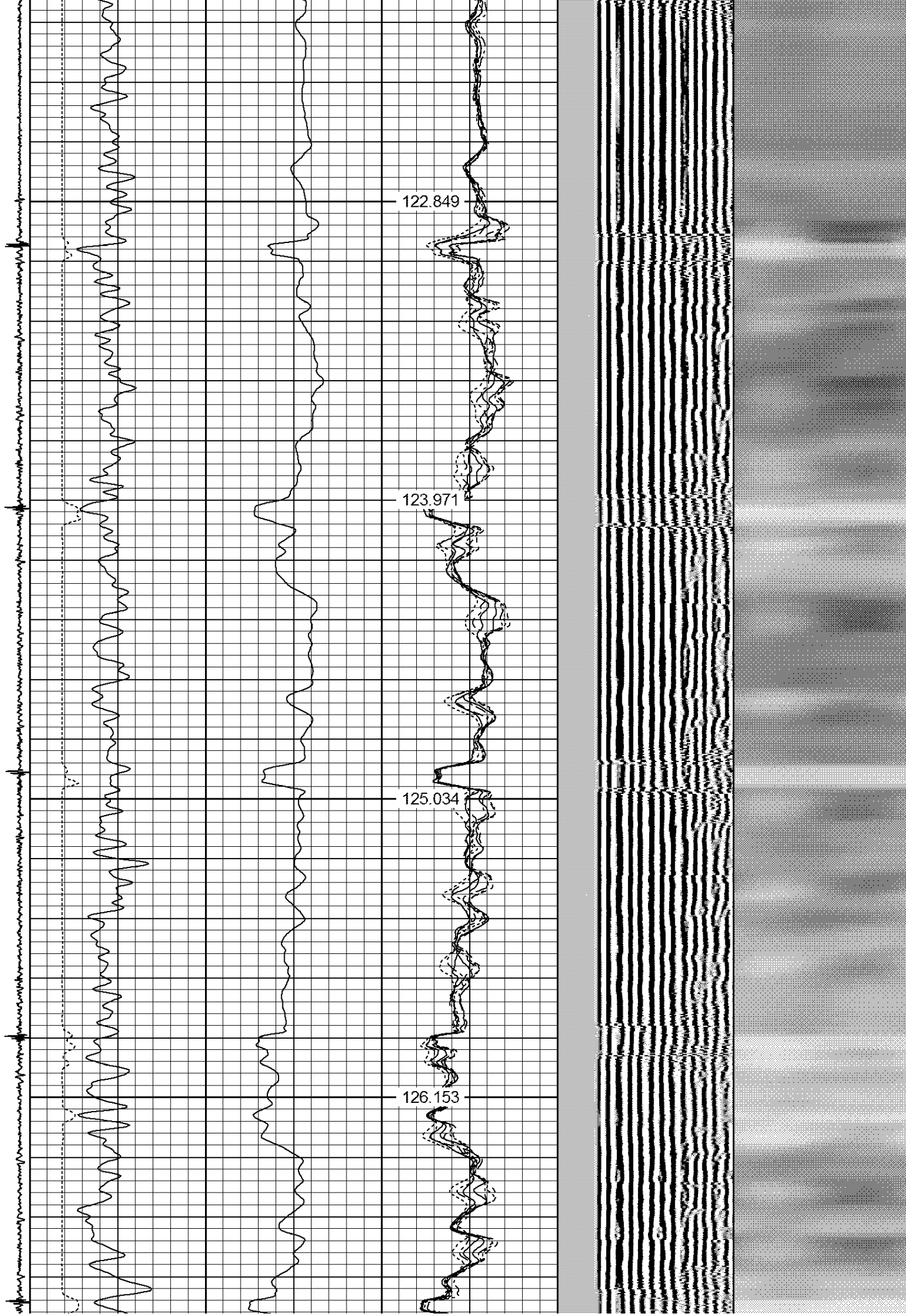
123.971

1600

125.034

1650

126.153



1700

1750

1800

1850

1900

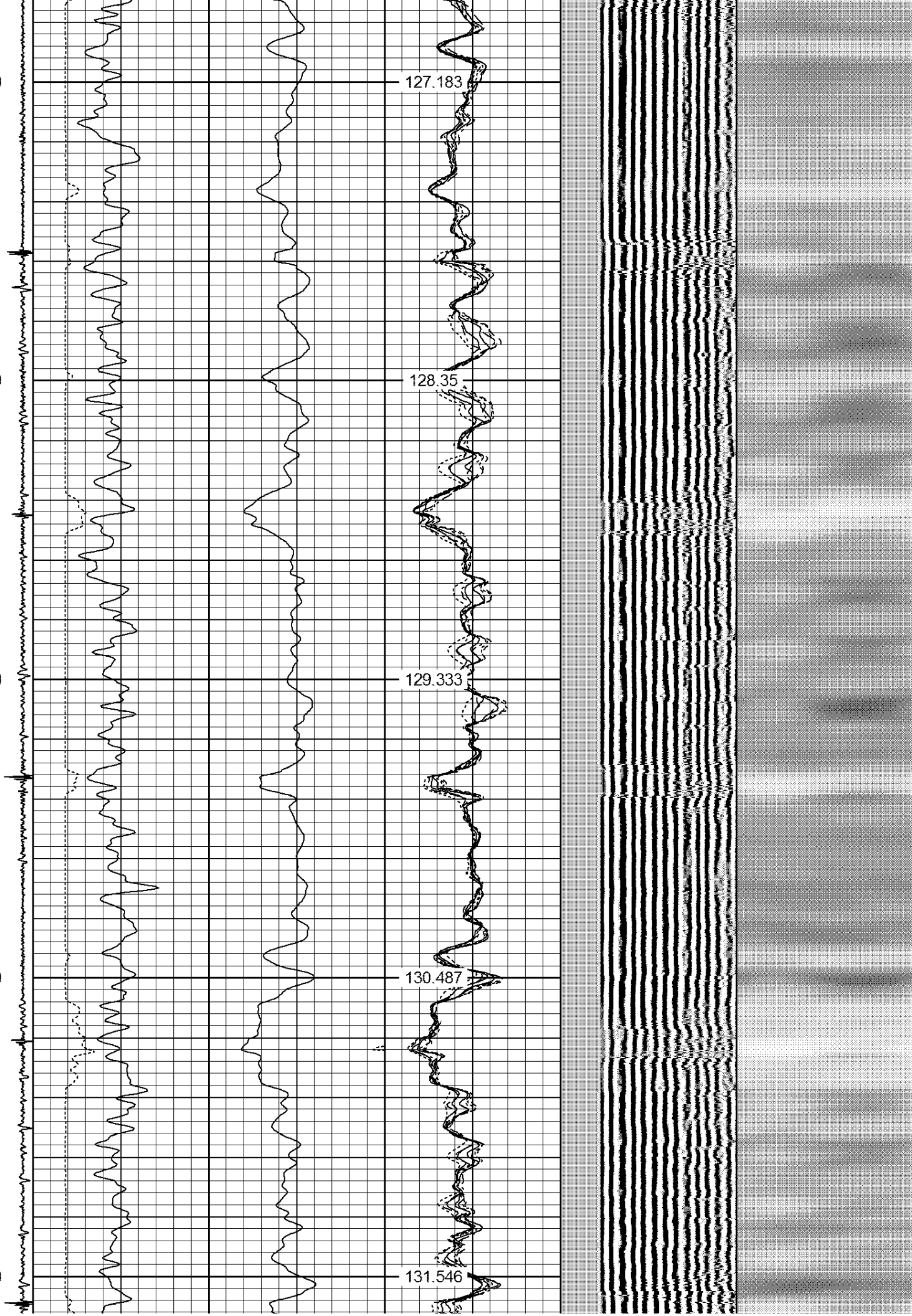
127.183

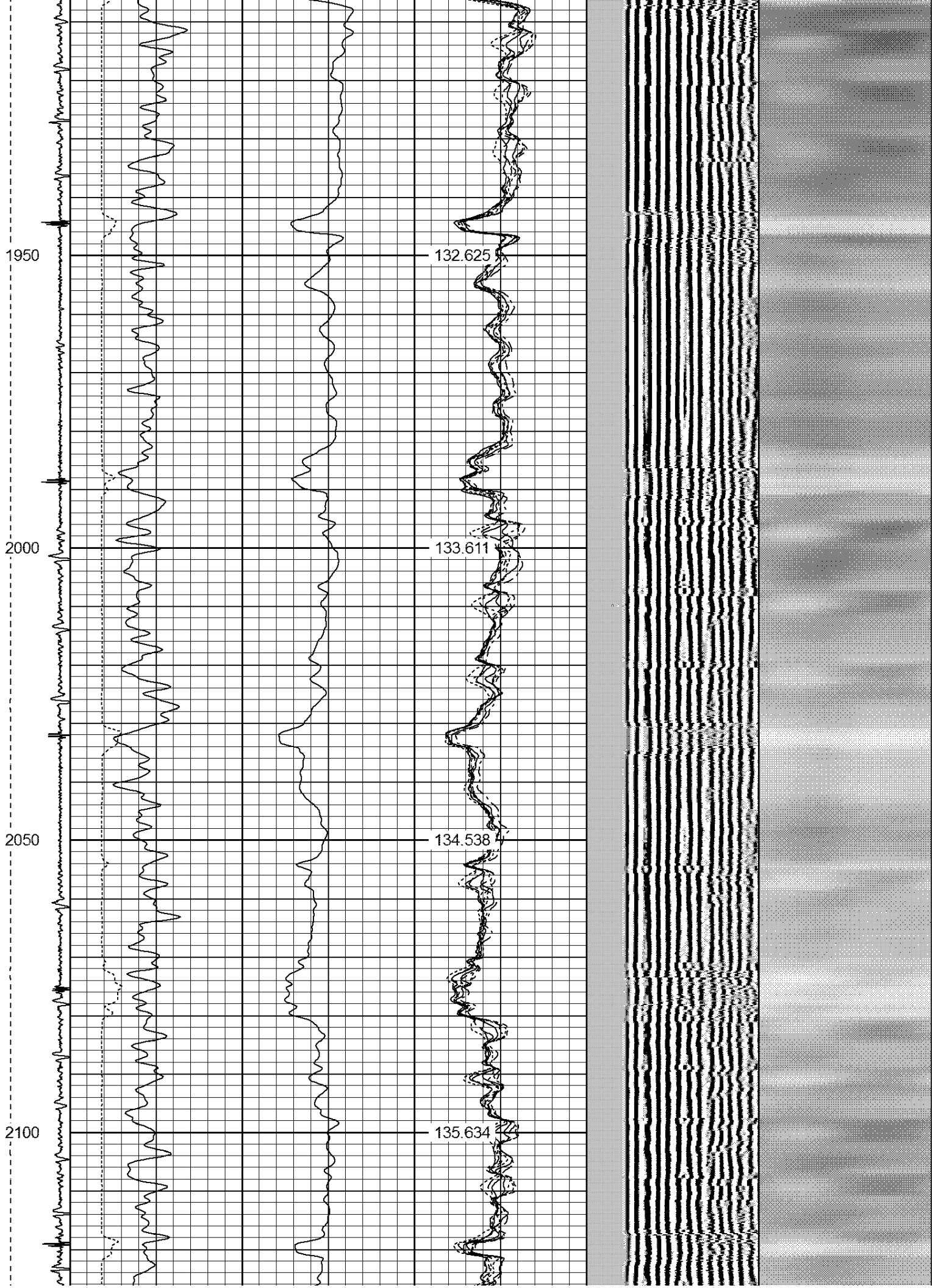
128.35

129.333

130.487

131.546





2150

136.696

2200

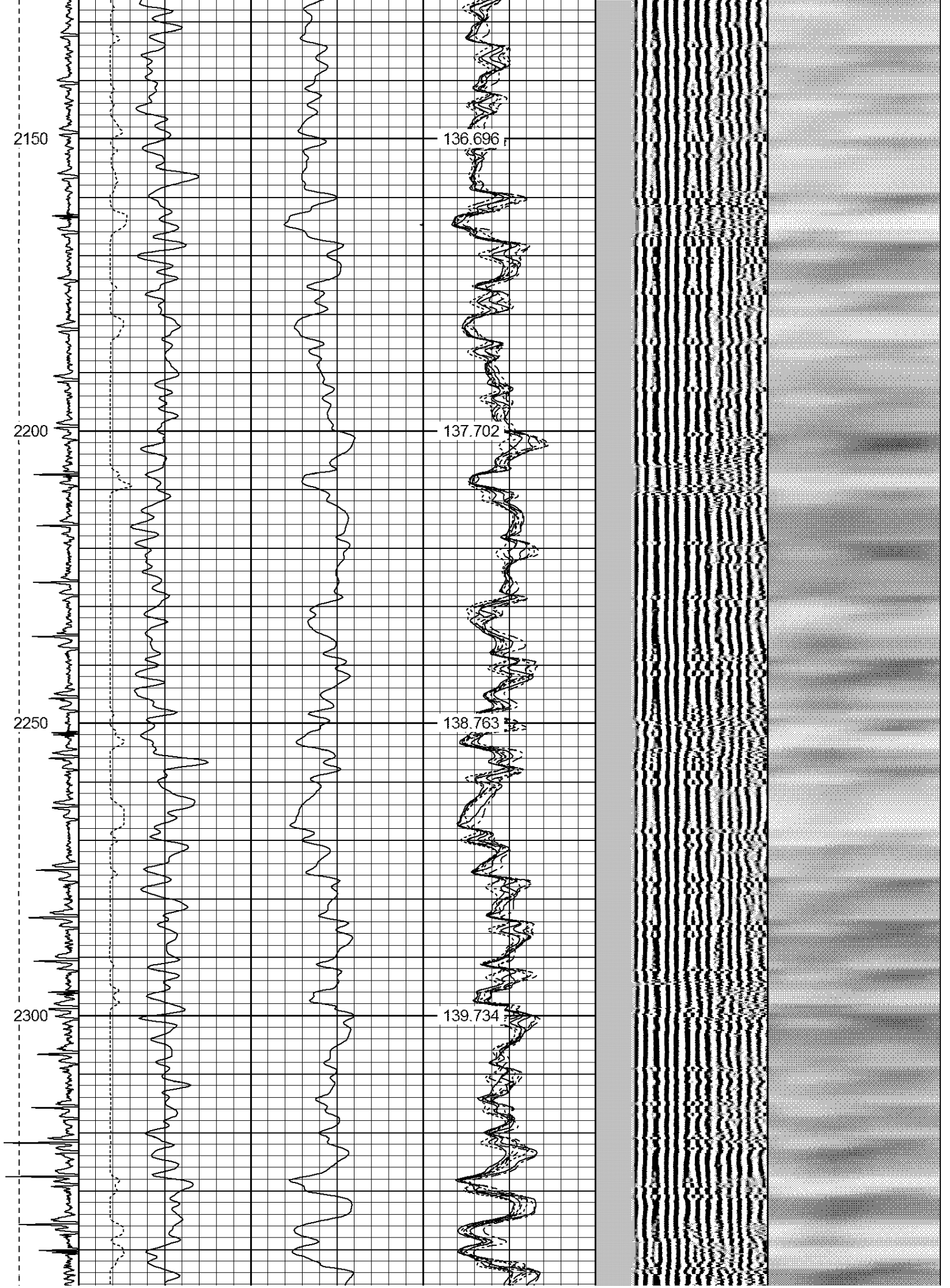
137.702

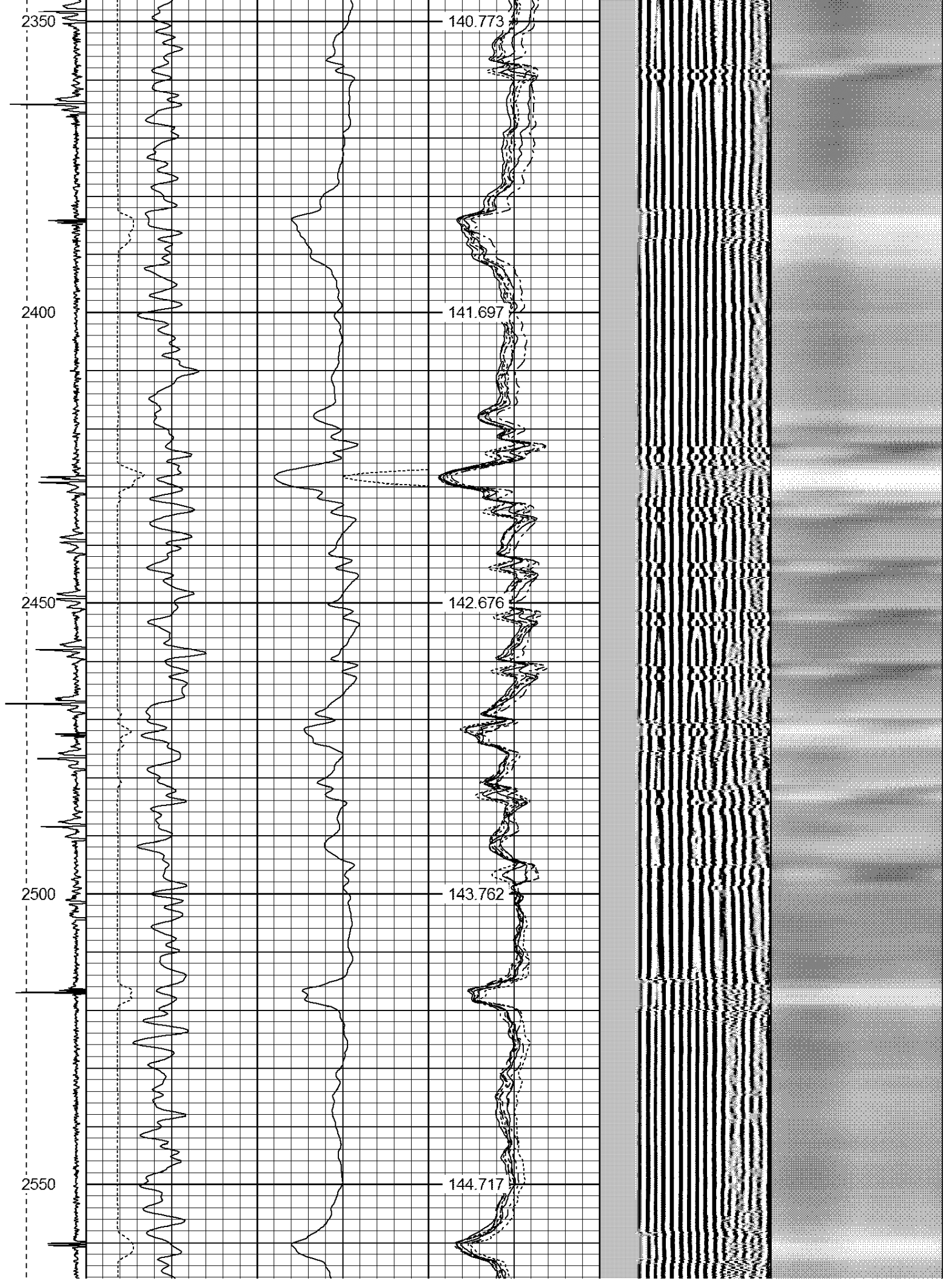
2250

138.763

2300

139.734





2600

145.687

2650

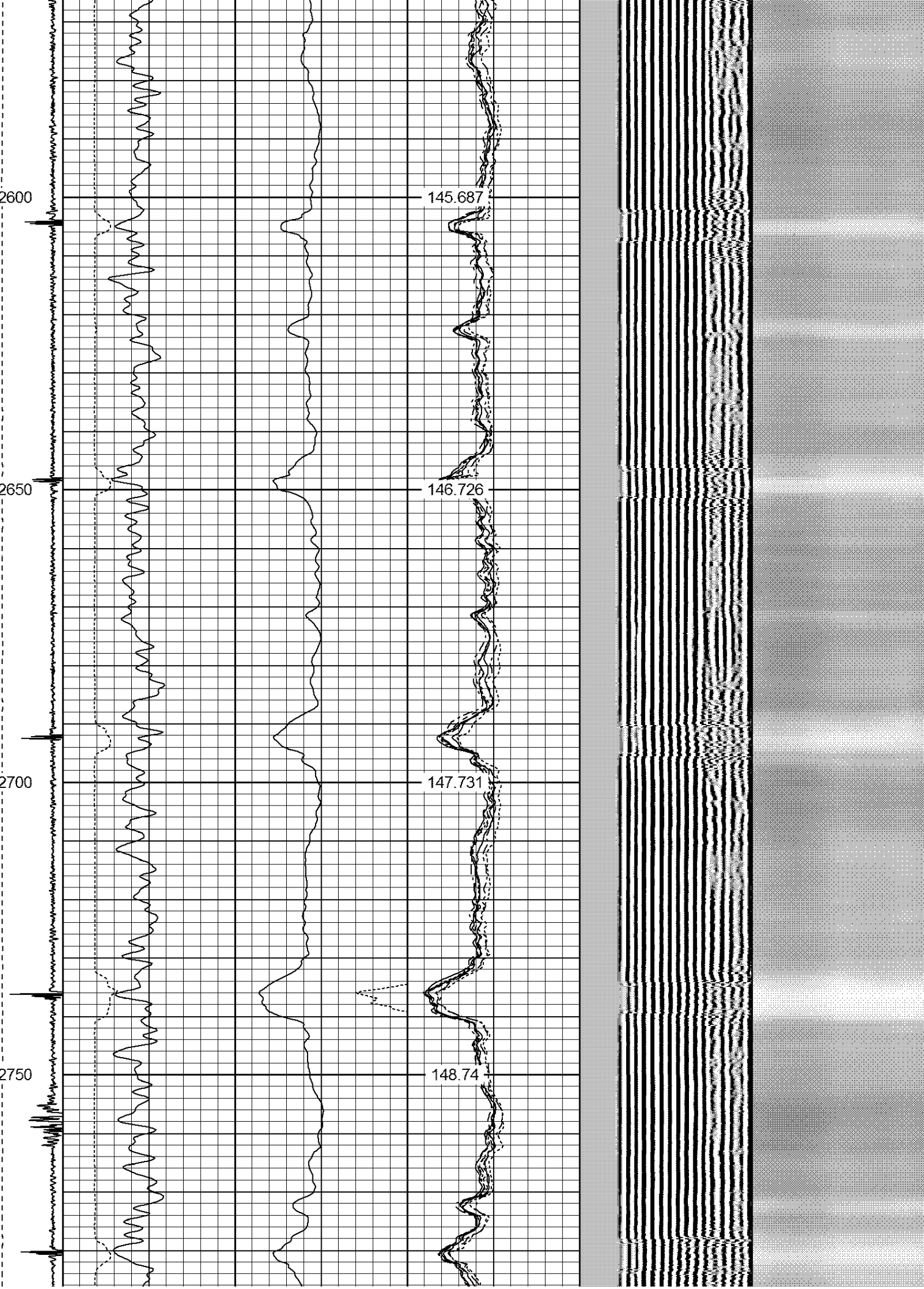
146.726

2700

147.731

2750

148.74



2800

149.719

2850

150.711

2900

151.771

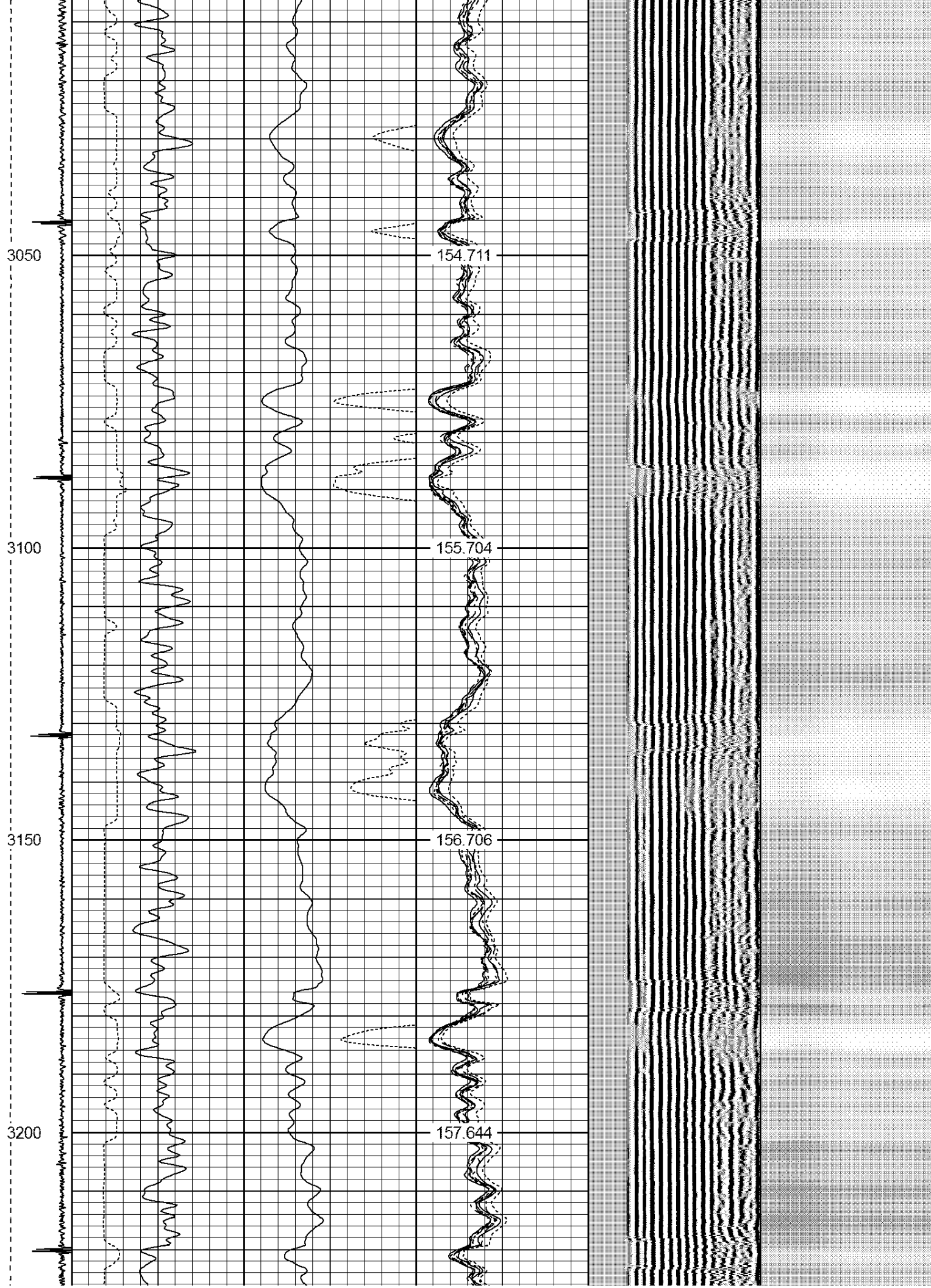
2950

152.698

3000

153.78





3250

158.617

3300

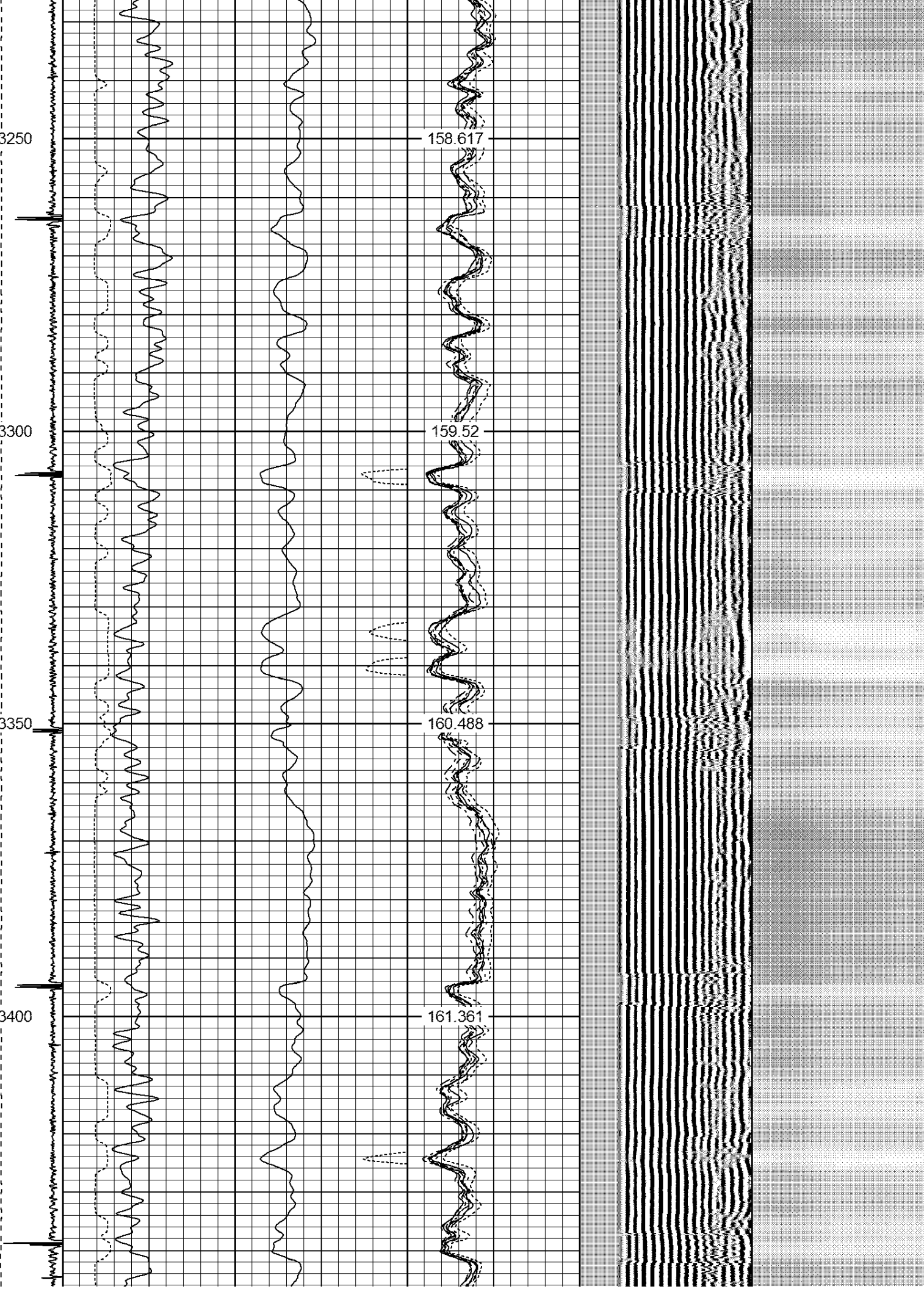
159.52

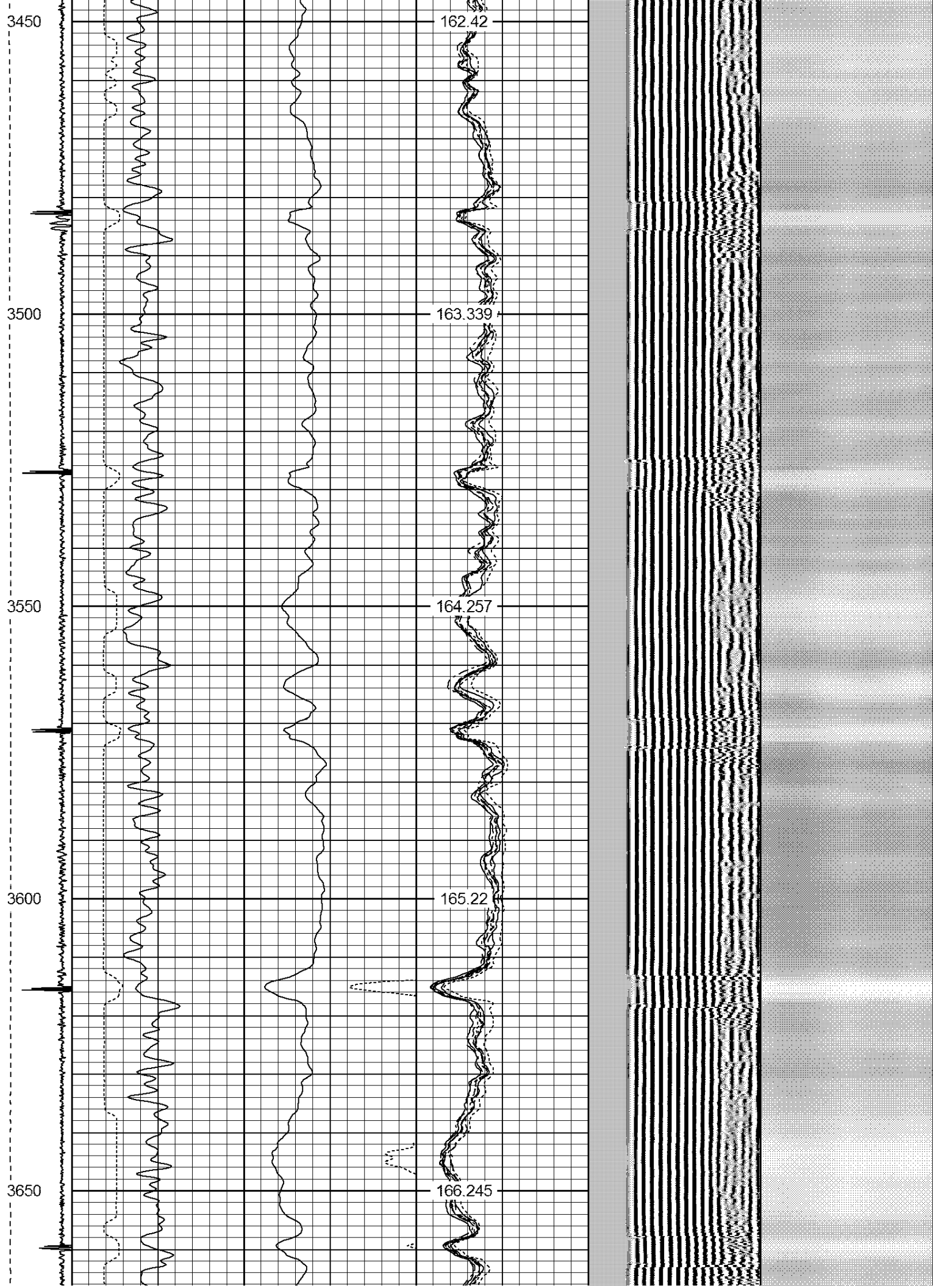
3350

160.488

3400

161.361





3700

167.198

3750

168.205

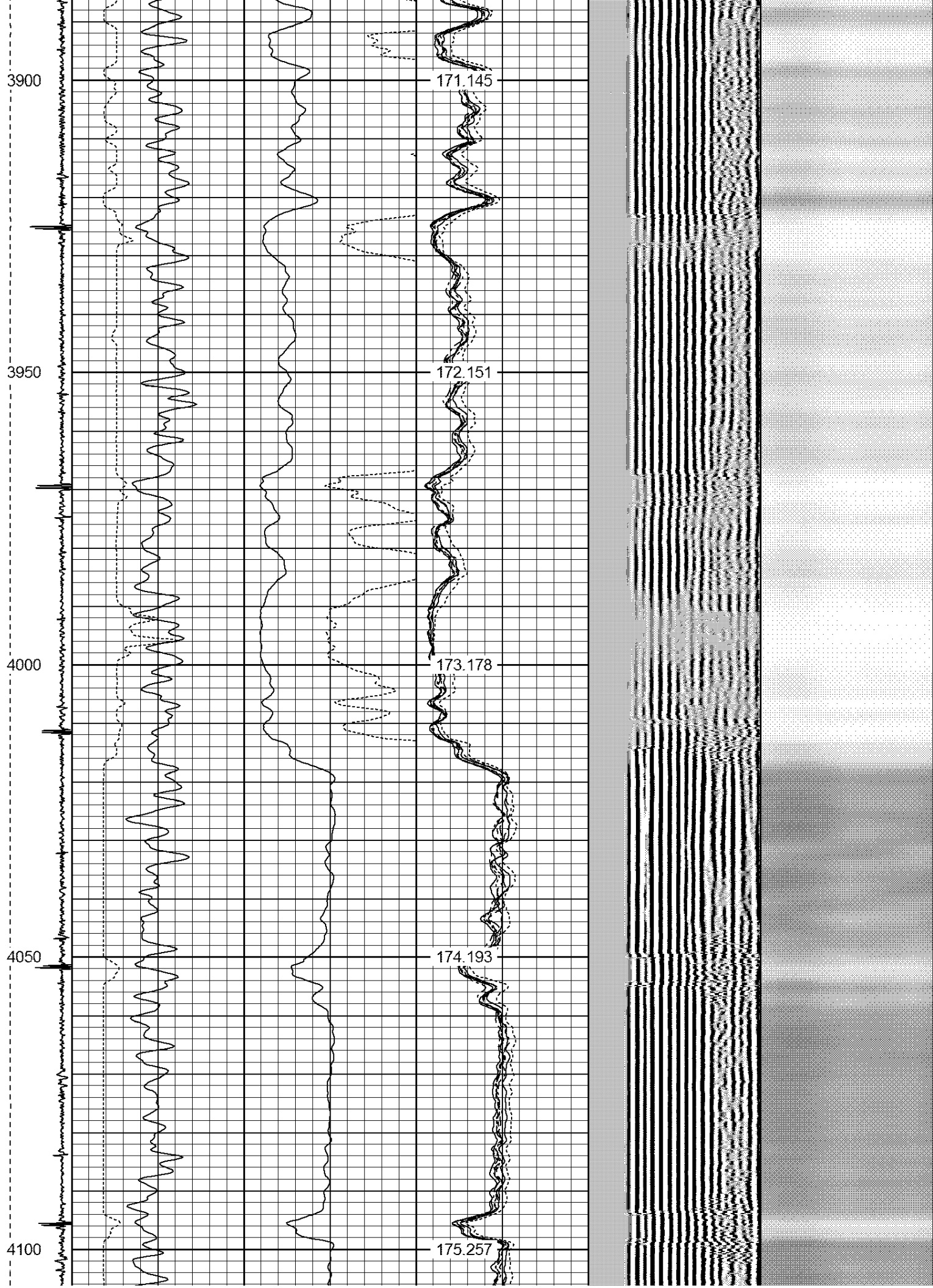
3800

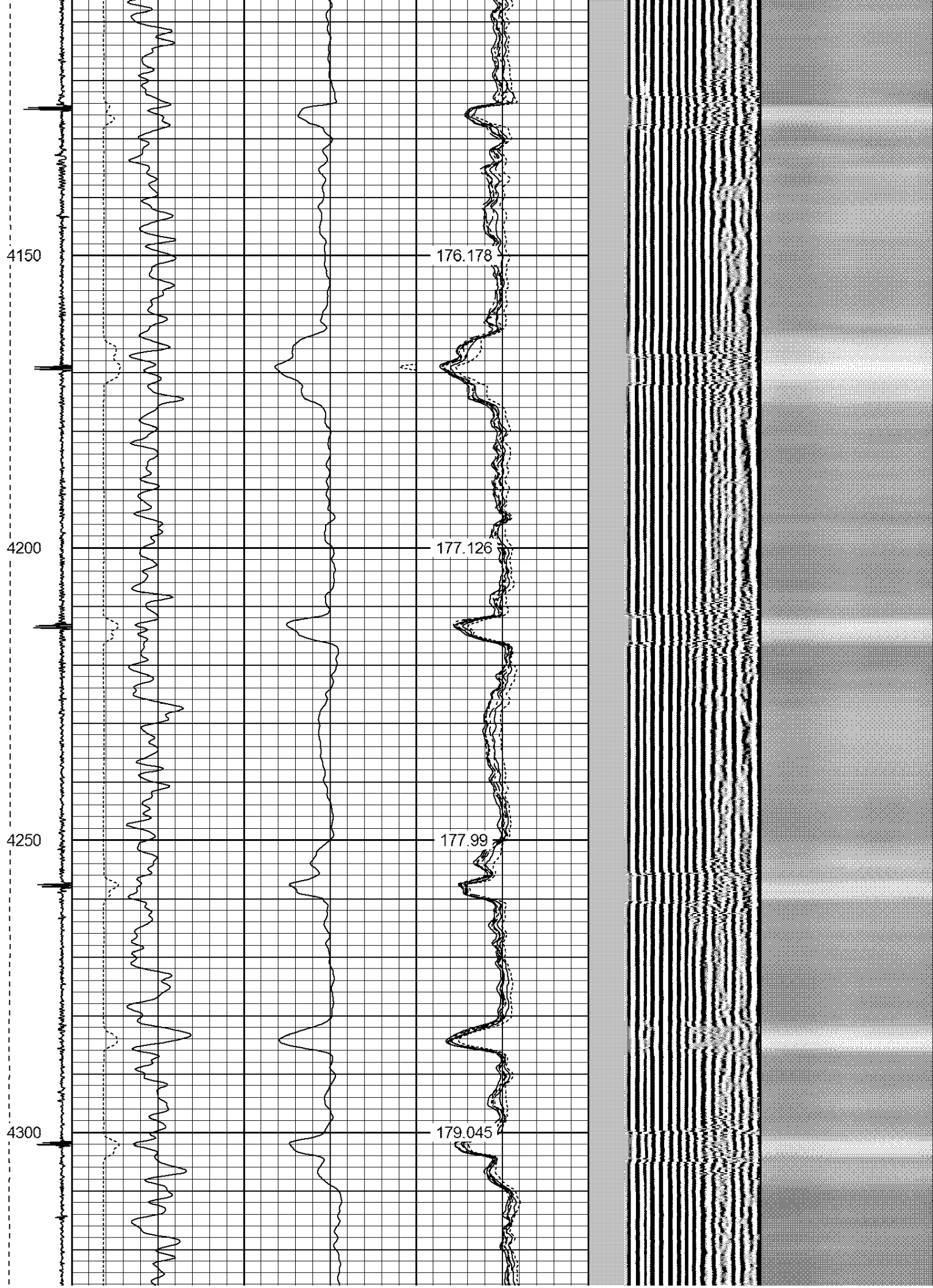
169.179

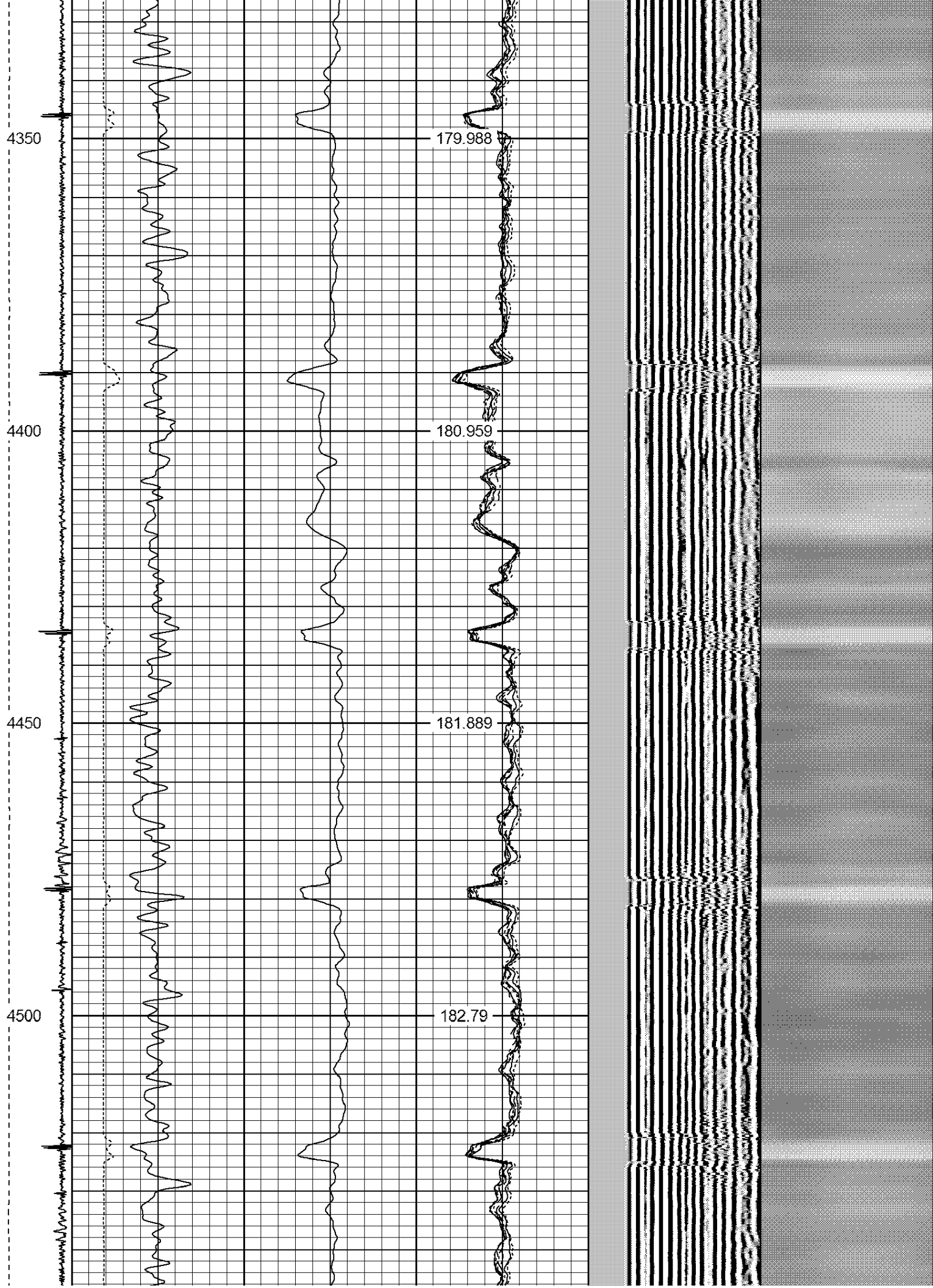
3850

170.225











4800

188.552

4850

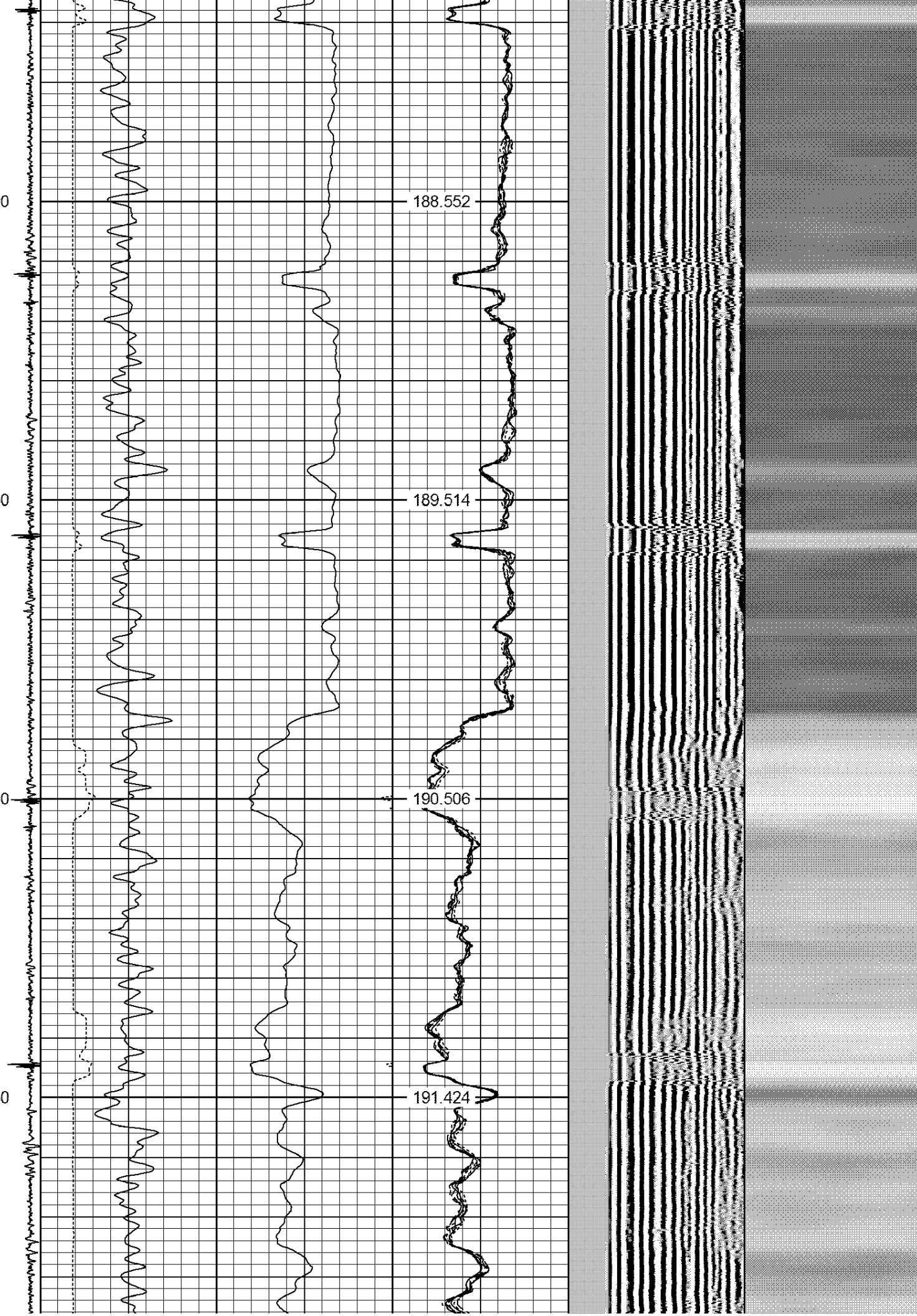
189.514

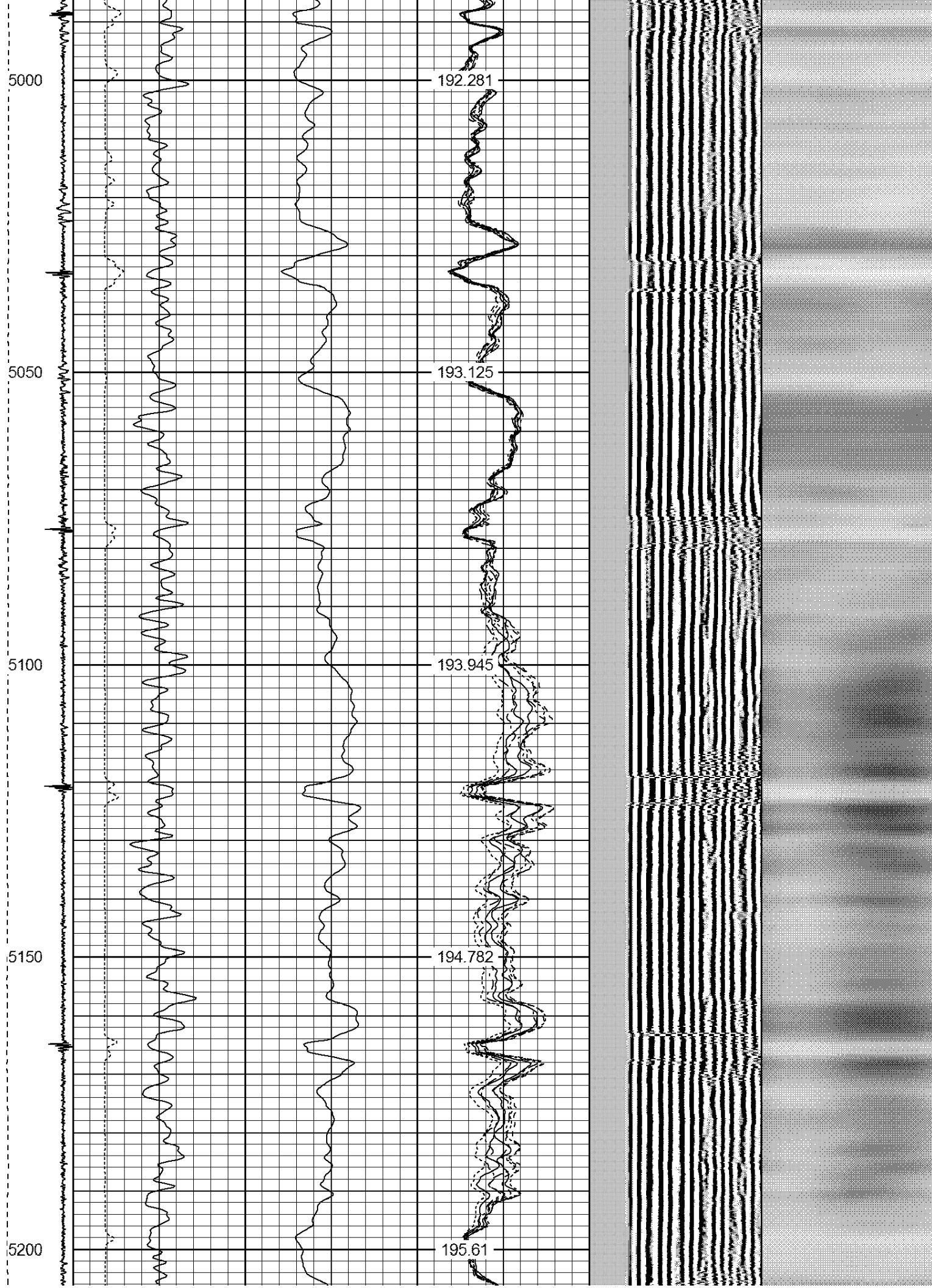
4900

190.506

4950

191.424





5250

196.311

5300

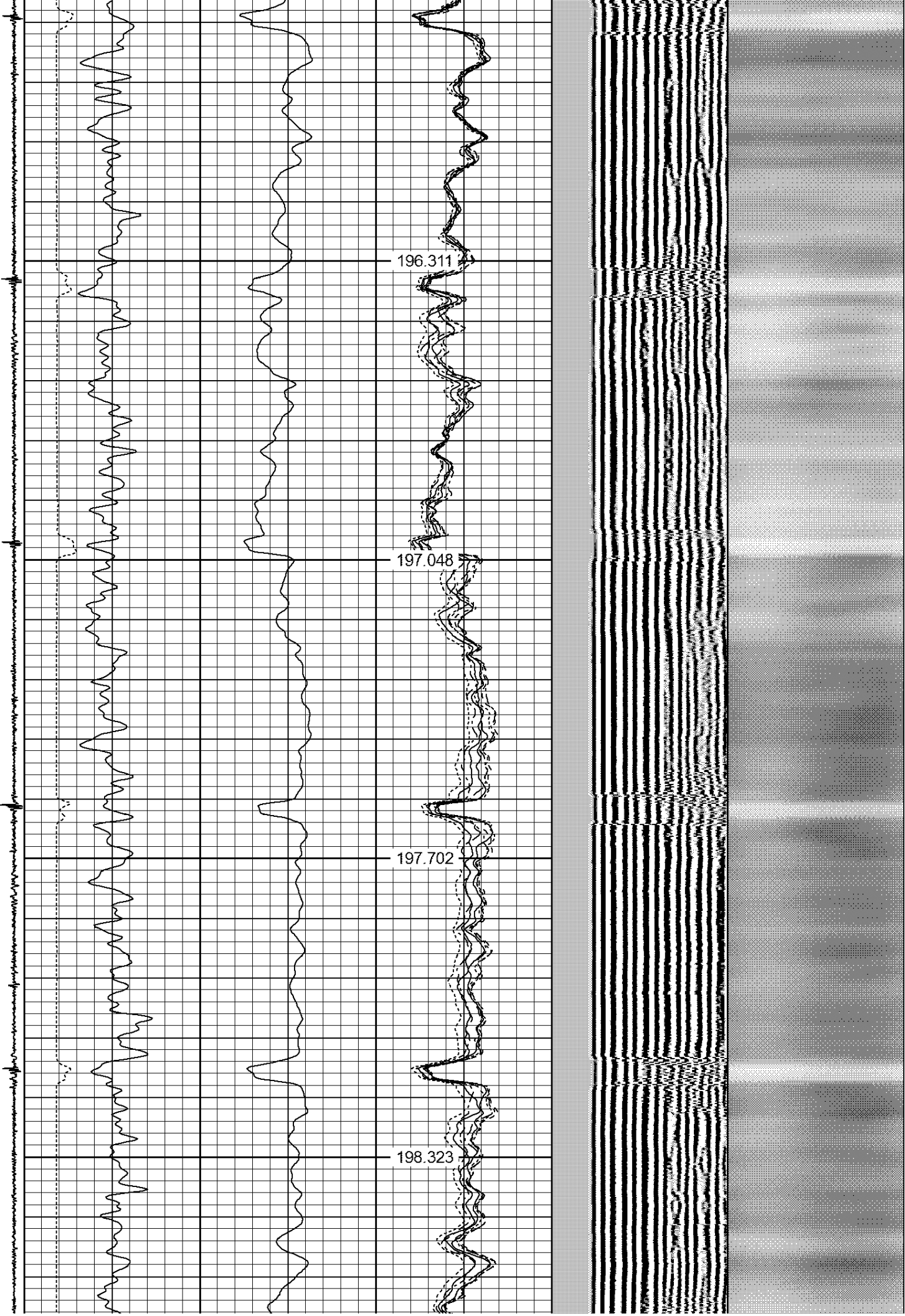
197.048

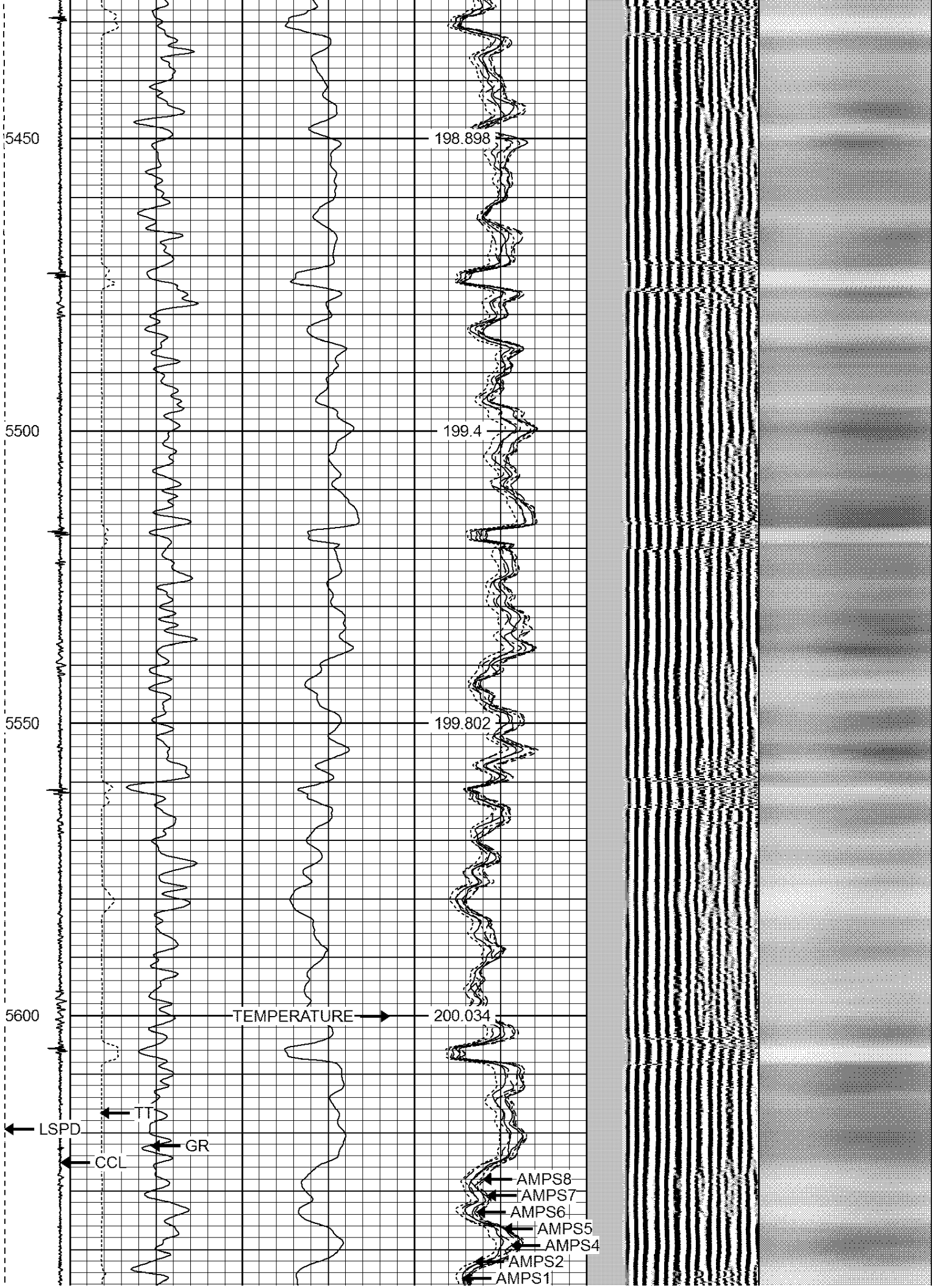
5350

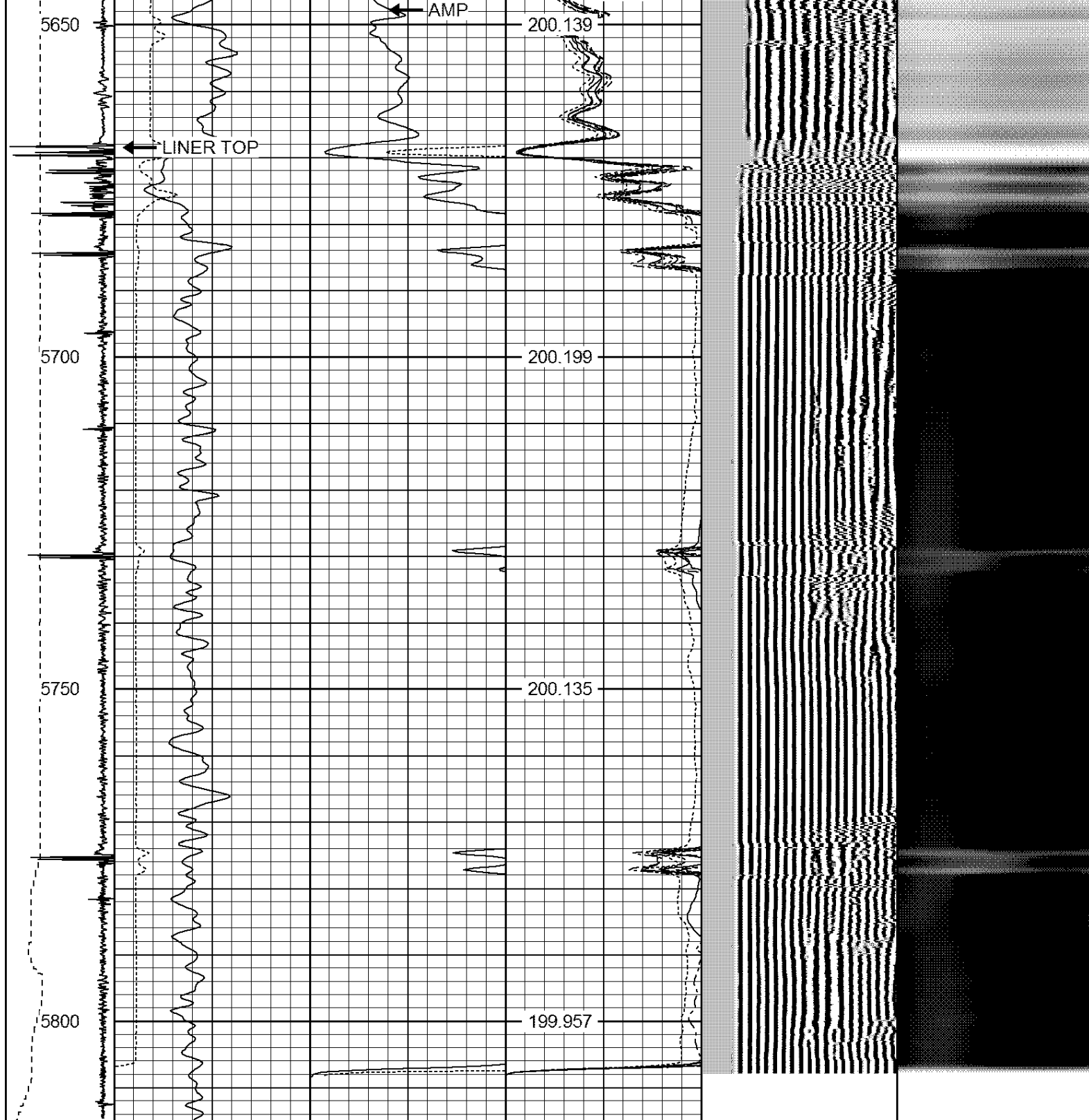
197.702

5400

198.323







-9	CCL	1	200	TT (usec)	800	0	AMP (mV)	100	0	AMPS1	100	200	VDL	1200	1	Cement Map	8
LSPD			0	GR (GAPI)	200	0	AMPx5 (mV)	20	0	AMPS2	100				1		100
(ft/min)			200	GR (GAPI)	400				0	AMPS4	100						
0	250								0	AMPS5	100						
									0	AMPS6	100						
									0	AMPS7	100						
									0	AMPS8	100						
										IntTemp							
										(degF)							



Company	BILL BARRETT CORPORATION
Well	ANSCHUTZ STATE 5-62-35-6457BH
Field	WATTENBERG
County	WELD
State	COLORADO