

## **ANADARKO PETROLEUM CORP - EBUS**

Thomsen 34C-18HZ

Major 42

# **Post Job Summary**

## **Cement Surface Casing**

Date Prepared: 2/25/2014  
Version: 1

Service Supervisor: BULINSKI, MATTHEW

Submitted by: GROVES, COREY

**HALLIBURTON**

# HALLIBURTON

## Wellbore Geometry

---

Job Tubulars					MD		Shoe Joint Length ft
Type	Description	Size in	ID in	Wt lbm/ft	Top ft	Bottom ft	
Casing	9 5/8" Surface Casing	9.63	8.921	36.00	0.00	940.00	43.00
Open Hole Section	13 1/2" Open Hole Section		13.500		0.00	940.00	0.00

# HALLIBURTON

## ***Pumping Schedule***

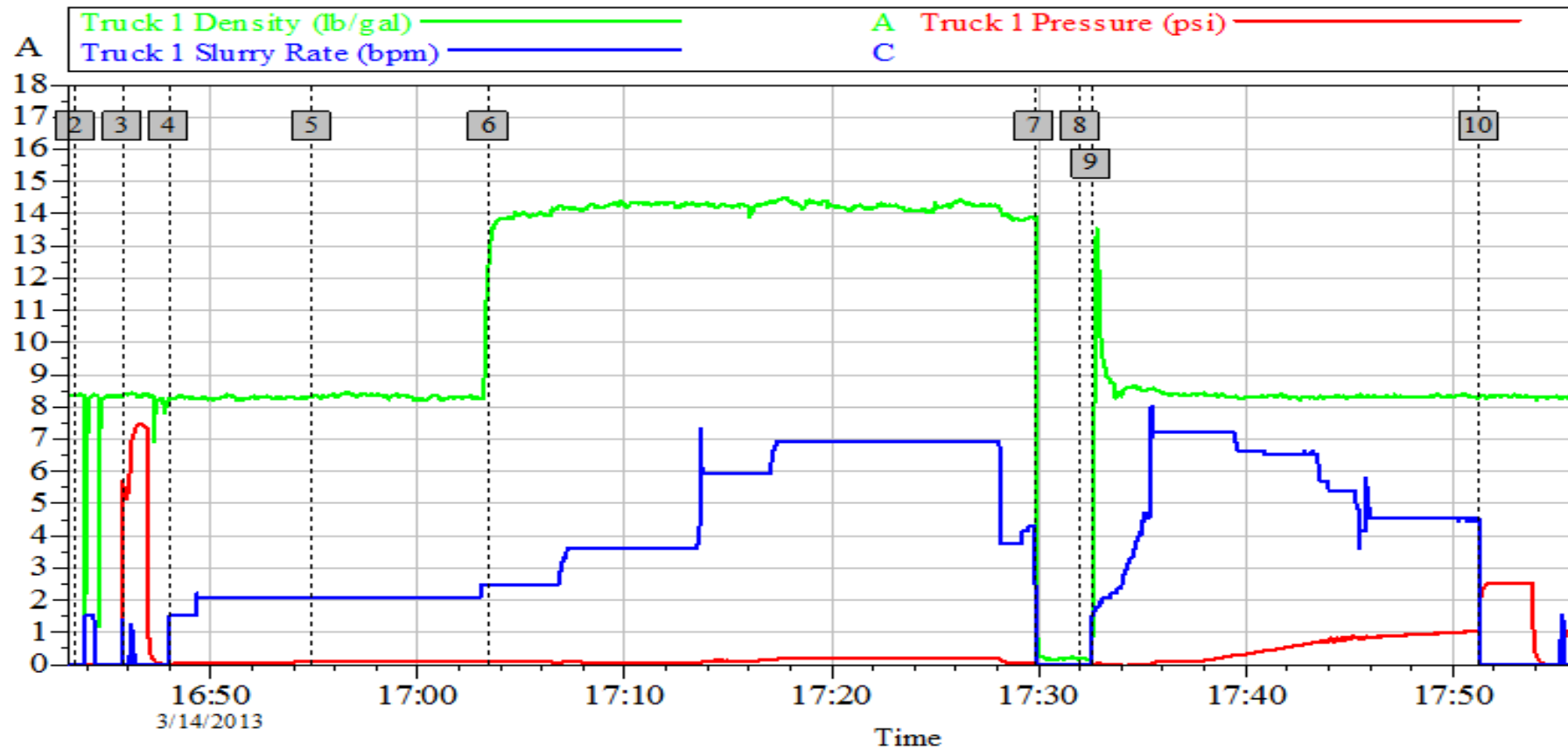
---

Stage /Plug #	Fluid #	Fluid Type	Fluid Name	Surface Density lbm/gal	Avg Rate bbl/min	Surface Volume	Downhole Volume
1	1	Spacer	Fresh Water Spacer	8.33	2.00	10.0 bbl	10.0 bbl
1	2	Spacer	Mud Flush III	8.34	2.00	12.0 bbl	12.0 bbl
1	3	Cement Slurry	SwiftCem B2 Lead	14.20	5.00	350.0 sacks	350.0 sacks
1	4	Spacer	Water Displacement	8.33	5.00	70.0 bbl	70.0 bbl

# HALLIBURTON

## Data Acquisition

### Anadarko Thomsen 34C-18HZ Surface



# HALLIBURTON

## Service Supervisor Reports

---

### Job Log

Date/Time	Chart #	Activity Code	Pump Rate	Cum Vol	Pressure (psig)		Comments
03/14/2013 14:45		Arrive at Location from Service Center					
03/14/2013 14:50		Assessment Of Location Safety Meeting					Hazard Hunt on location before spotting trucks
03/14/2013 16:37		Start Job					
03/14/2013 16:45		Test Lines					2500psi Pressure test lines to rig floor
03/14/2013 16:47		Pump Spacer 1	2	10		27.0	H2O spacer
03/14/2013 16:54		Pump Spacer 2	2	12		25.0	12bbls MudFlush spacer
03/14/2013 17:03		Pump Cement	5	95		30.0	350sks SwiftCem B2, 14.2ppg, 1.53yield, 7.62gal/sk mixed with water from frac tank and # verify by Pressurized mud scales
03/14/2013 17:29		Shutdown					
03/14/2013 17:32		Drop Top Plug					Pre-loaded with company man watching
03/14/2013 17:32		Pump Displacement	5	70		230.0	H2O displacement, good returns throughout
03/14/2013 17:47		Cement Returns to Surface					cmt to surface at 49bbls into... Giving total of 21bbls back to surface
03/14/2013 17:51		Bump Plug	3			253.0	Plug landed at 253psi and brought it up to 867psi and held 3mins
03/14/2013 17:54		Check Floats					Floats Held
03/14/2013 18:03		End Job					



## Cementing Job Summary

## ***The Road to Excellence Starts with Safety***

<b>Sold To #:</b> 300466	<b>Ship To #:</b> 2986613	<b>Quote #:</b>	<b>Sales Order #:</b> 900286770
<b>Customer:</b> ANADARKO PETROLEUM CORP - EBUS		<b>Customer Rep:</b> Major 44, Anadarko	
<b>Well Name:</b> Thomsen		<b>Well #:</b> 34C-18HZ	<b>API/UWI #:</b> 05-123-36866
<b>Field:</b> Wattenberg	<b>City (SAP):</b> HUDSON	<b>County/Parish:</b> Weld	<b>State:</b> Colorado
<b>Lat:</b> N 40.154 deg. OR N 40 deg. 9 min. 13.036 secs.		<b>Long:</b> W 104.714 deg. OR W -105 deg. 17 min. 8.772 secs.	
<b>Job Purpose:</b> Cement Surface Casing			
<b>Well Type:</b> Development Well		<b>Job Type:</b> Cement Surface Casing	
<b>Sales Person:</b> FLING, MATTHEW		<b>Srvs Supervisor:</b> BULINSKI, MATTHEW	<b>MBU ID Emp #:</b> 483865

## Job Personnel

HES Emp Name	Exp Hrs	Emp #	HES Emp Name	Exp Hrs	Emp #	HES Emp Name	Exp Hrs	Emp #
BULINSKI, MATTHEW J	0.0	483865	HOLMES, ANDREW Malcom	0.0	520802	IPSON, TIMOTHY J	0.0	485018

## Equipment

HES Unit #	Distance-1 way	HES Unit #	Distance-1 way	HES Unit #	Distance-1 way	HES Unit #	Distance-1 way
11526488	20 mile	11542778	20 mile	11605598	20 mile		

## Job Hours

Date	On Location Hours	Operating Hours	Date	On Location Hours	Operating Hours	Date	On Location Hours	Operating Hours
TOTAL					Total is the sum of each column separately			

Job					Job Times			
Formation Name						Date	Time	Time Zone
Formation Depth (MD)	Top		Bottom		Called Out	14 - Mar - 2013	12:30	MST
Form Type			BHST		On Location	14 - Mar - 2013	14:45	MST
Job depth MD	940. ft		Job Depth TVD	940. ft	Job Started	14 - Mar - 2013	16:43	MST
Water Depth			Wk Ht Above Floor		Job Completed	14 - Mar - 2013	18:03	MST
Perforation Depth (MD)	From		To		Departed Loc	14 - Mar - 2013	19:30	MST

## Well Data

<i>Description</i>	<b>New / Used</b>	<b>Max pressure psig</b>	<b>Size in</b>	<b>ID in</b>	<b>Weight lbm/ft</b>	<b>Thread</b>	<b>Grade</b>	<b>Top MD ft</b>	<b>Bottom MD ft</b>	<b>Top TVD ft</b>	<b>Bottom TVD ft</b>
13 1/2" Open Hole Section				13.5				.	940.		
9 5/8" Surface Casing	Unknown		9.625	8.921	36.		J-55	.	940.		

## Tools and Accessories

Type	Size	Qty	Make	Depth	Type	Size	Qty	Make	Depth	Type	Size	Qty	Make
Guide Shoe					Packer					Top Plug			
Float Shoe					Bridge Plug					Bottom Plug			
Float Collar					Retainer					SSR plug set			
Insert Float										Plug Container			
Stage Tool										Centralizers			

## Miscellaneous Materials

Gelling Agt	Conc	Surfactant	Conc	Acid Type	Qty	Conc	%
Treatment Fld	Conc	Inhibitor	Conc	Sand Type	Size	Qty	

Summit  
Version:

Tuesday, February 25, 2014 16:49:00

Fluid Data									
Stage/Plug #: 1									
Fluid #	Stage Type	Fluid Name	Qty	Qty uom	Mixing Density lbm/gal	Yield ft <sup>3</sup> /sk	Mix Fluid Gal/sk	Rate bbl/min	Total Mix Fluid Gal/sk
1	Fresh Water Spacer		10.0	bbl	8.33			2.0	
2	Mud Flush III		12.00	bbl	8.34			2.0	
3	SwiftCem B2 Lead	SWIFTCCEM (TM) SYSTEM (452990)	350.0	sacks	14.2	1.53	7.62	5.0	7.62
7.623 Gal		FRESH WATER							
4	Water Displacement		70.0	bbl	8.33			5.0	
Calculated Values		Pressures		Volumes					
Displacement		Shut In: Instant		Lost Returns		Cement Slurry		Pad	
Top Of Cement		5 Min		Cement Returns		Actual Displacement		Treatment	
Frac Gradient		15 Min		Spacers		Load and Breakdown		Total Job	
Rates									
Circulating		Mixing		Displacement		Avg. Job			
Cement Left In Pipe	Amount	43 ft	Reason	Shoe Joint					
Frac Ring # 1 @	ID	Frac ring # 2 @	ID	Frac Ring # 3 @	ID	Frac Ring # 4 @	ID		
The Information Stated Herein Is Correct				Customer Representative Signature					

