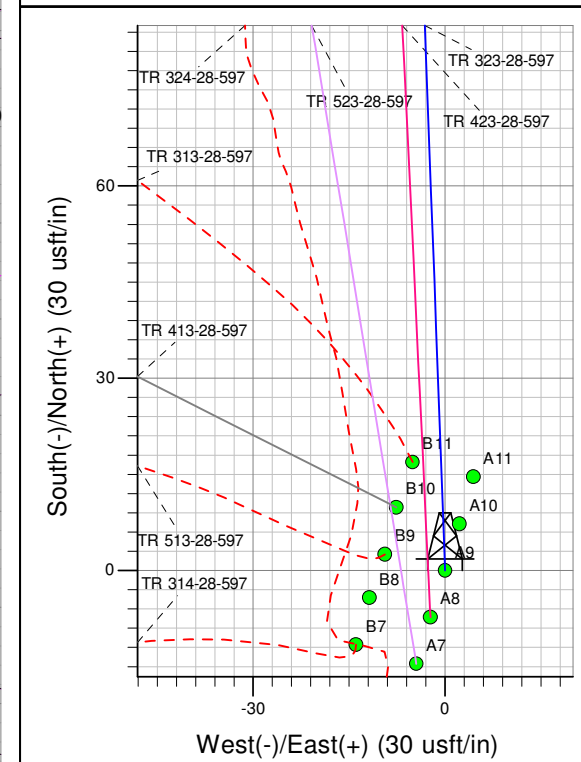
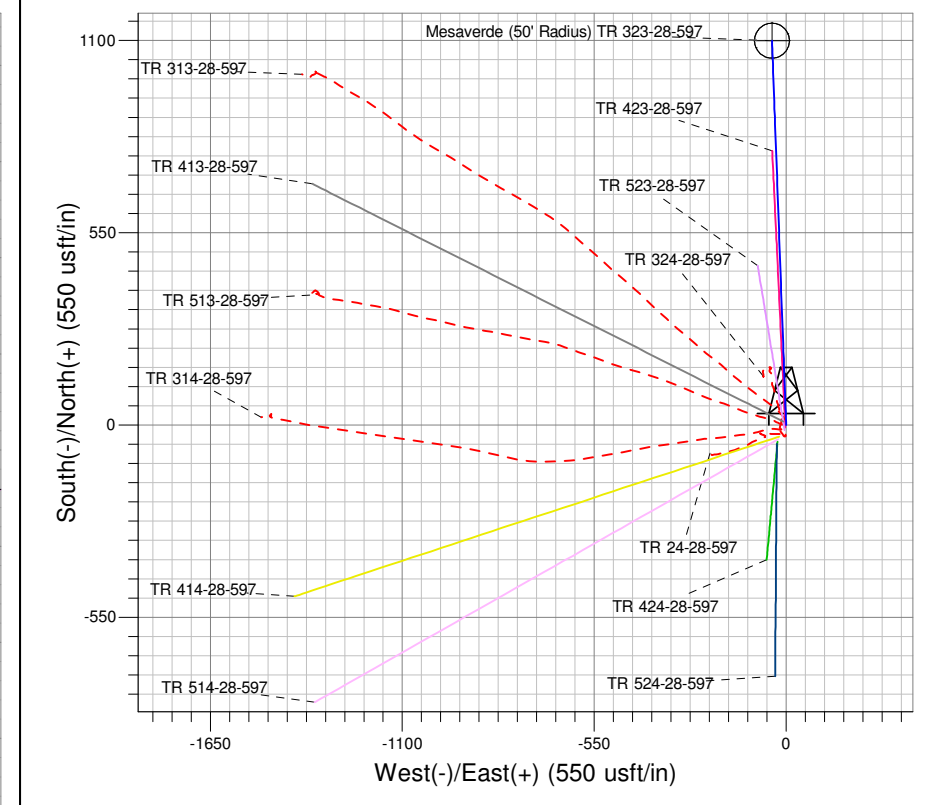
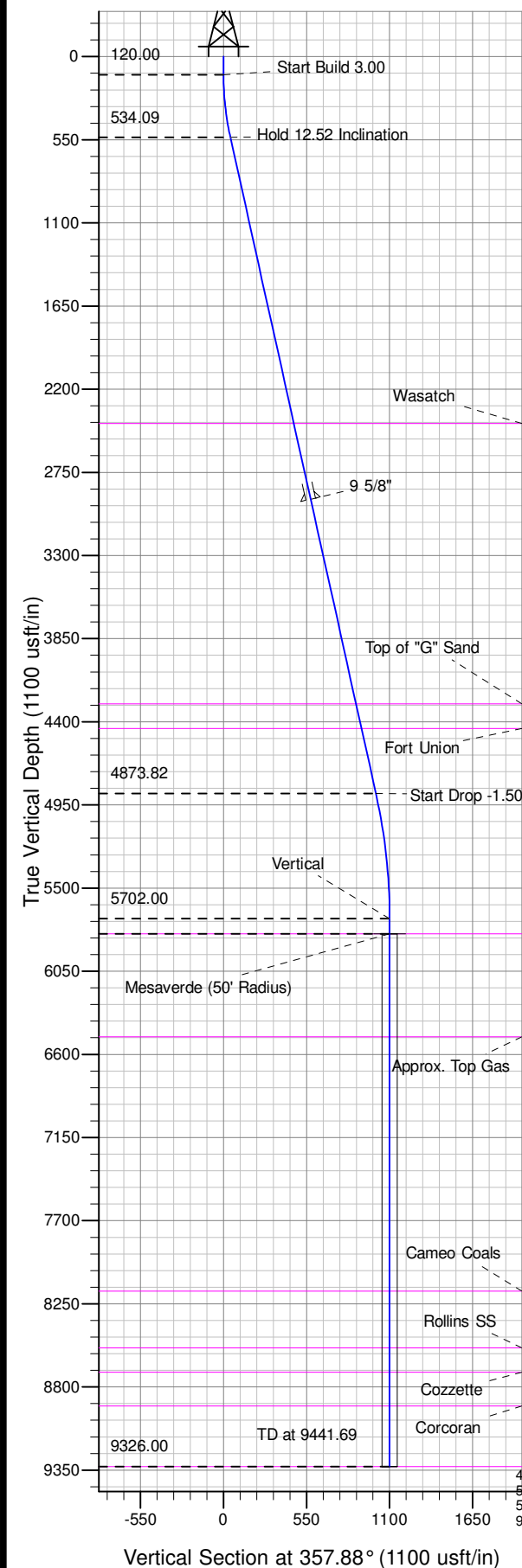




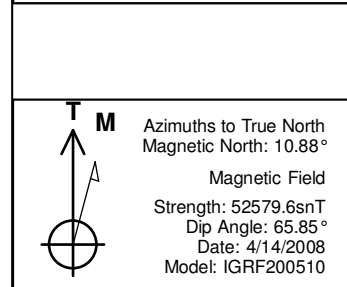
Well Name: TR 323-28-597
Surface Location: TR 24-28-597 Pad
North American Datum 1983 , US State Plane 1983 , Colorado Central Zone
Ground Elevation: 8374.00

+N/-S	+E/-W	Northing	Easting	Latitude	Longitude	Slot
0.00	0.00	1648237.43	2215051.62	39.58016	-108.28529	A9

KELLY BUSHING @ 8400.00usft (Nabors 577 (26' RKB) kjs)



Project: TR 28-05S-097W
Site: TR 24-28-597 Pad
Well: TR 323-28-597
Plan #5 12Aug13 kjs



ANNOTATIONS									
FVD	MD	Inc	Azi	+N/-S	+E/-W	Vsect	Departure	Annotation	
120.00	120.00	0.00	0.00	0.00	0.00	0.00	0.00	Start Build 3.00	
534.09	537.40	12.52	357.88	45.40	-1.68	45.43	45.43	Hold 12.52 Inclination	
4873.82	4982.89	12.52	357.88	1009.59	-37.36	1009.28	1009.28	Start Drop -1.50	
5702.00	5817.69	0.00	0.00	1099.39	-40.72	1100.14	1100.14	Vertical	
5802.00	5917.69	0.00	0.00	1099.39	-40.72	1100.14	1100.14	Mesaverde	
9326.00	9441.69	0.00	0.00	1099.39	-40.72	1100.14	1100.14	TD at 9441.69	