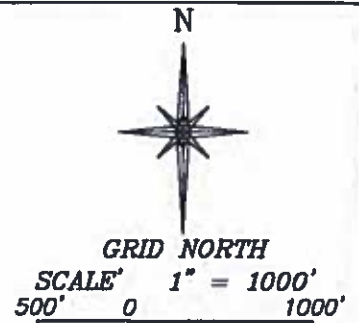
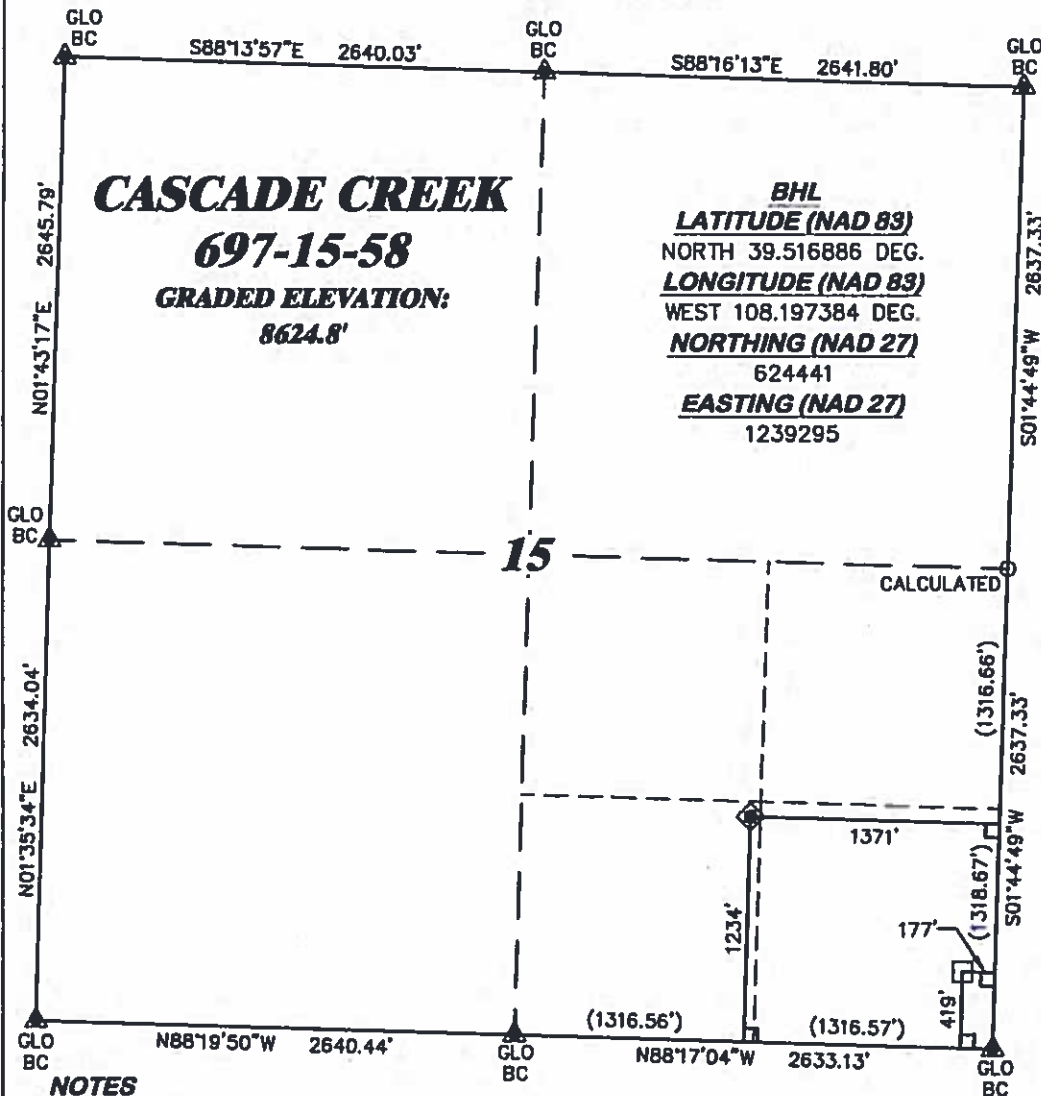


**R. 97 W.**



**T. 6 S.**

**SHL**  
**LATITUDE (NAD 83)**  
NORTH 39.519123 DEG.  
**LONGITUDE (NAD 83)**  
WEST 108.201617 DEG.  
**NORTHING (NAD 27)**  
625291.34  
**EASTING (NAD 27)**  
1238125.29

**BASIS OF BEARING/DATUM**  
SPCS CO CENTRAL NAD 27  
BASED ON GPS OBSERVATIONS  
AND OPUS SOLUTION ON DRG  
CONTROL POINT "WILLIAMS"  
HAVING A POSITION OF:  
NAD83(2011)  
LAT 39° 31' 35.18" NORTH  
LONG 108° 12' 16.79" WEST  
NAVD88 ELEVATION: 8618.08'

THE SOUTH LINE OF THE SE $\frac{1}{4}$   
OF SECTION 15, MONUMENTED  
BY GLO BC'S AND BEARING  
N 88°17'04" W.

**LEGEND**

- ◆ WELL LOCATION
- APPROX. BHL
- L DENOTES 90° TIE
- ▲ PREVIOUSLY FOUND MONUMENT
- CALCULATED CORNER

**NOTES**

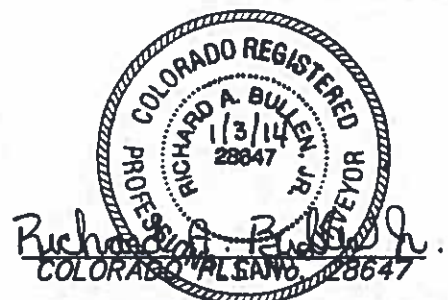
1. GPS OPERATOR RICHARD BULLEN OBSERVED A PDOP OF 1.2.
2. ALL GPS OBSERVATIONS ARE IN COMPLIANCE WITH COGCC RULE No.215.
3. EXISTING IMPROVEMENTS WITHIN 500' OF LOCATION. SEE EXHIBIT 2D.
4. SURROUNDING SURFACE USE IS NATIVE BRUSH, NON CROP RANGELAND.

**SURVEYOR'S STATEMENT**

I, RICHARD A. BULLEN JR., AN EMPLOYEE AND AGENT ON BEHALF OF D.R. GRIFFIN & ASSOCIATES, INC. STATE THE PLAT HEREON IS A CORRECT REPRESENTATION OF A SURVEY MADE UNDER MY SUPERVISION ON THE 18th DAY OF DECEMBER, 2013 OF THE SHOWN CASCADE CREEK 697-15-58 AND THAT THE LOCATION HAS BEEN STAKED ON THE GROUND.

Notice: In accordance with Colorado State Law, any legal action based upon any defect in this survey plat must commence within three (3) years after first discovery of such defect. In no event, may any action based upon any defect in this survey plat be commenced more than ten (10) years from the date of certification shown hereon.

**CC 697-15-54 PAD**



**PLAT OF DRILLING LOCATION IN  
SWSE, SECTION 15, FOR  
OXY USA WTP LP**

**1234' F/SL, & 1371' F/EL, SECTION 15,  
T. 6 S., R. 97 W., 6TH P.M.,  
GARFIELD COUNTY, COLORADO**



**RIFFIN & ASSOCIATES, INC.**  
1414 ELK ST., ROCK SPRINGS, WY 82901

(307) 962-6028

**DRAWN: 9/24/2013 - TCM**

**SCALE: 1" = 1000'**

**REVISED: .-. .**

**DRG JOB No. 20159**

**EXHIBIT 1**