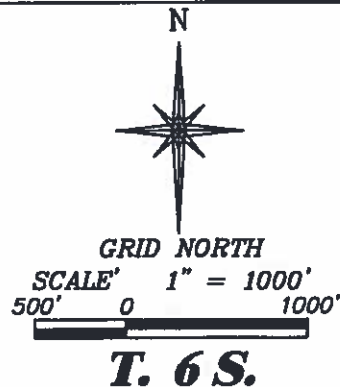
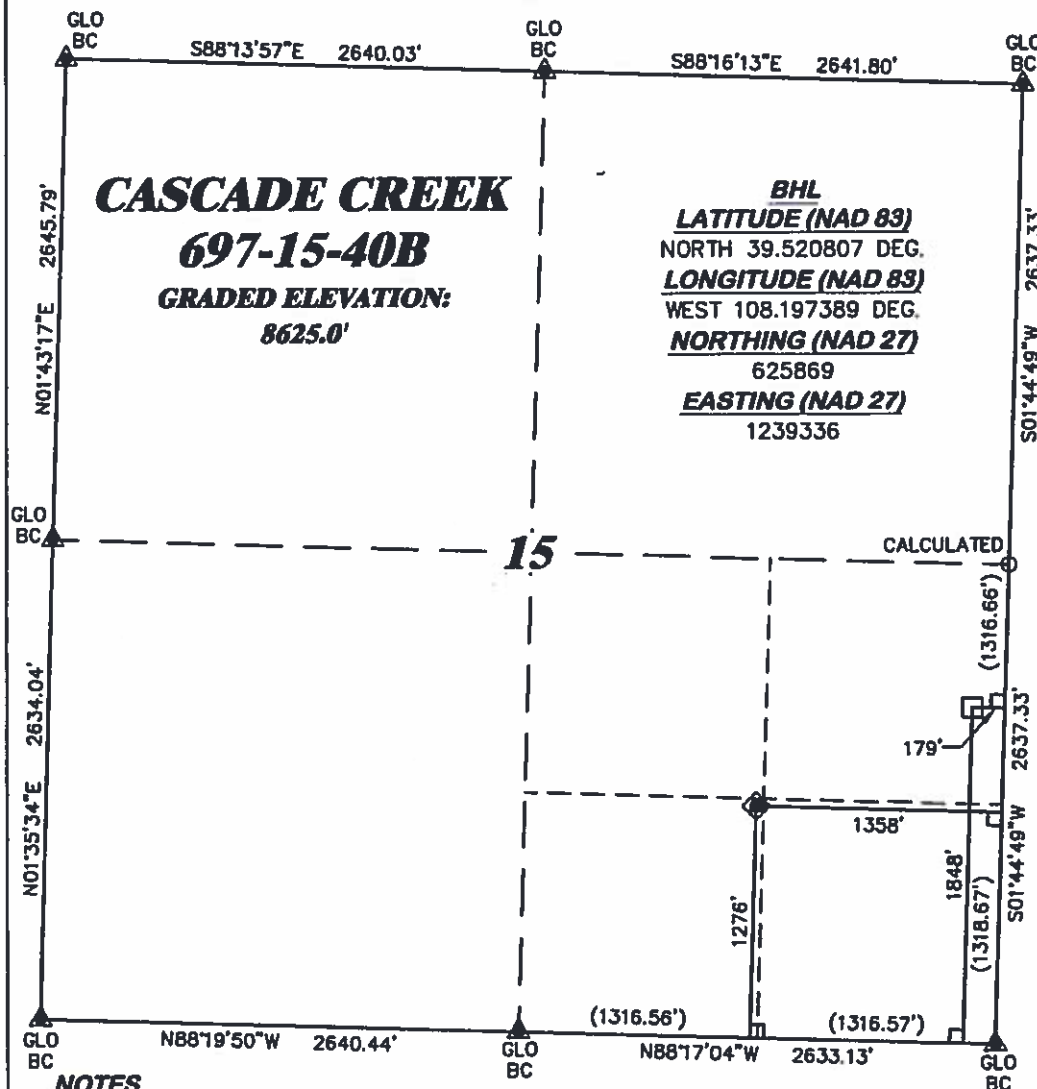


R. 97 W.



T. 6 S.

SHL
LATITUDE (NAD 83)
NORTH 39.519240 DEG.
LONGITUDE (NAD 83)
WEST 108.201569 DEG.
NORTHING (NAD 27)
625333.53
EASTING (NAD 27)
1238140.37

BASIS OF BEARING/DATUM
SPCS CO CENTRAL NAD 27
BASED ON GPS OBSERVATIONS
AND OPUS SOLUTION ON DRG
CONTROL POINT "WILLIAMS"
HAVING A POSITION OF:
NAD83(2011)
LAT 39° 31' 35.18" NORTH
LONG 108° 12' 16.79" WEST
NAVD88 ELEVATION: 8618.08'

THE SOUTH LINE OF THE SE¼
OF SECTION 15, MONUMENTED
BY GLO BC'S AND BEARING
N 88°17'04" W.

NOTES

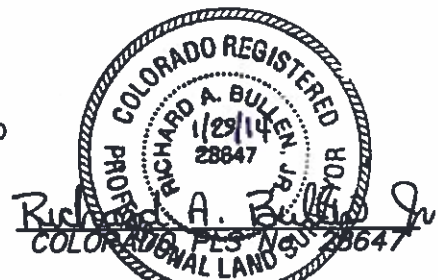
1. GPS OPERATOR RICHARD BULLEN OBSERVED A PDOP OF 1.1.
2. ALL GPS OBSERVATIONS ARE IN COMPLIANCE WITH COGCC RULE No.215.
3. EXISTING IMPROVEMENTS WITHIN 500' OF LOCATION. SEE EXHIBIT 2D.
4. SURROUNDING SURFACE USE IS NATIVE BRUSH, NON CROP RANGELAND.

SURVEYOR'S STATEMENT

I, RICHARD A. BULLEN JR., AN EMPLOYEE AND AGENT ON BEHALF OF D.R. GRIFFIN & ASSOCIATES, INC. STATE THE PLAT HEREON IS A CORRECT REPRESENTATION OF A SURVEY MADE UNDER MY SUPERVISION ON THE 18th DAY OF DECEMBER, 2013 OF THE SHOWN CASCADE CREEK 697-15-40B AND THAT THE LOCATION HAS BEEN STAKED ON THE GROUND.

Notice: In accordance with Colorado State Law, any legal action based upon any defect in this survey plat must commence within three (3) years after first discovery of such defect. In no event, may any action based upon any defect in this survey plat be commenced more than ten (10) years from the date of certification shown hereon.

CC 697-15-54 PAD



LEGEND

- ◆ WELL LOCATION
- APPROX. BHL
- L DENOTES 90° TIE
- ▲ PREVIOUSLY FOUND MONUMENT
- CALCULATED CORNER



DR GRIFFIN & ASSOCIATES, INC.

(307) 382-8028

1414 ELK ST., ROCK SPRINGS, WY 82901

DRAWN: 9/24/2013 - TCM

SCALE: 1" = 1000'

REVISED: 1/29/2014 - TCM

DRG JOB No. 20158

REVISED BHL

EXHIBIT 1

**PLAT OF DRILLING LOCATION IN
SWSE, SECTION 15, FOR
OXY USA WTP LP**

**1276' F/SL, & 1358' F/EL, SECTION 15,
T. 6 S., R. 97 W., 6TH P.M.,
GARFIELD COUNTY, COLORADO**