

ENGINEERING CALCS

Nasik

Cascade Creek 697-15-54

Cascade Creek 697-15-38

CC 697-15-38

Plan: CC 697-15-38Plan v1

Standard Planning Report - Geographic

12 February, 2014

Oxy
Planning Report - Geographic

Database:	HOPSPP	Local Co-ordinate Reference:	Well Cascade Creek 697-15-38
Company:	ENGINEERING CALCS	TVD Reference:	WELL @ 8625.00ft (Original Well Elev)
Project:	Nasik	MD Reference:	WELL @ 8625.00ft (Original Well Elev)
Site:	Cascade Creek 697-15-54	North Reference:	True
Well:	Cascade Creek 697-15-38	Survey Calculation Method:	Minimum Curvature
Wellbore:	CC 697-15-38		
Design:	CC 697-15-38Plan v1		

Project	Nasik, Planning		
Map System:	US State Plane 1927 (Exact solution)	System Datum:	Mean Sea Level
Geo Datum:	NAD 1927 (NADCON CONUS)		
Map Zone:	Colorado Central 502		

Site	Cascade Creek 697-15-54, 16-54		
Site Position:	Northing:	625,361.65 ft	Latitude: 39° 31' 9.611 N
From: Map	Easting:	1,238,150.52 ft	Longitude: 108° 12' 3.264 W
Position Uncertainty: 0.00 ft	Slot Radius:	13.200 in	Grid Convergence: -1.70 °

Well	Cascade Creek 697-15-38		
Well Position	+N/-S	0.00 ft	Northing: 625,361.65 ft
	+E/-W	0.00 ft	Easting: 1,238,136.28 ft
Position Uncertainty	0.00 ft	Wellhead Elevation:	Latitude: 39° 31' 9.607 N
			Longitude: 108° 12' 3.446 W
			Ground Level: 8,640.00 ft

Wellbore	CC 697-15-38				
Magnetics	Model Name	Sample Date	Declination (°)	Dip Angle (°)	Field Strength (nT)
	IGRF2010	1/8/2014	10.11	65.65	51,956

Design	CC 697-15-38Plan v1				
Audit Notes:					
Version:	Phase:	PROTOTYPE	Tie On Depth:	0.00	
Vertical Section:	Depth From (TVD) (ft)	+N/-S (ft)	+E/-W (ft)	Direction (°)	
	0.00	0.00	0.00	326.75	

Plan Sections										
Measured Depth (ft)	Inclination (°)	Azimuth (°)	Vertical Depth (ft)	+N/-S (ft)	+E/-W (ft)	Dogleg Rate (°/100ft)	Build Rate (°/100ft)	Turn Rate (°/100ft)	TFO (°)	Target
0.00	0.00	0.00	0.00	0.00	0.00	0.00	0.00	0.00	0.00	
600.00	0.00	0.00	600.00	0.00	0.00	0.00	0.00	0.00	0.00	
1,350.00	15.00	326.75	1,341.46	81.63	-53.52	2.00	2.00	0.00	326.75	
4,718.45	15.00	326.75	4,595.13	810.72	-531.54	0.00	0.00	0.00	0.00	
5,468.45	0.00	0.00	5,336.60	892.35	-585.07	2.00	-2.00	0.00	180.00	
9,325.85	0.00	0.00	9,194.00	892.35	-585.07	0.00	0.00	0.00	0.00	BHL 697-15-38

Oxy
Planning Report - Geographic

Database:	HOPSP	Local Co-ordinate Reference:	Well Cascade Creek 697-15-38
Company:	ENGINEERING CALCS	TVD Reference:	WELL @ 8625.00ft (Original Well Elev)
Project:	Nasik	MD Reference:	WELL @ 8625.00ft (Original Well Elev)
Site:	Cascade Creek 697-15-54	North Reference:	True
Well:	Cascade Creek 697-15-38	Survey Calculation Method:	Minimum Curvature
Wellbore:	CC 697-15-38		
Design:	CC 697-15-38Plan v1		

Planned Survey										
Measured			Vertical			Map	Map			
Depth	Inclination	Azimuth	Depth	+N/-S	+E/-W	Northing	Easting	Latitude	Longitude	
(ft)	(°)	(°)	(ft)	(ft)	(ft)	(ft)	(ft)			
0.00	0.00	0.00	0.00	0.00	0.00	625,361.65	1,238,136.28	39° 31' 9.607 N	108° 12' 3.446 W	
90.00	0.00	0.00	90.00	0.00	0.00	625,361.65	1,238,136.28	39° 31' 9.607 N	108° 12' 3.446 W	
16"										
100.00	0.00	0.00	100.00	0.00	0.00	625,361.65	1,238,136.28	39° 31' 9.607 N	108° 12' 3.446 W	
200.00	0.00	0.00	200.00	0.00	0.00	625,361.65	1,238,136.28	39° 31' 9.607 N	108° 12' 3.446 W	
300.00	0.00	0.00	300.00	0.00	0.00	625,361.65	1,238,136.28	39° 31' 9.607 N	108° 12' 3.446 W	
400.00	0.00	0.00	400.00	0.00	0.00	625,361.65	1,238,136.28	39° 31' 9.607 N	108° 12' 3.446 W	
500.00	0.00	0.00	500.00	0.00	0.00	625,361.65	1,238,136.28	39° 31' 9.607 N	108° 12' 3.446 W	
600.00	0.00	0.00	600.00	0.00	0.00	625,361.65	1,238,136.28	39° 31' 9.607 N	108° 12' 3.446 W	
700.00	2.00	326.75	699.98	1.46	-0.96	625,363.14	1,238,135.36	39° 31' 9.621 N	108° 12' 3.458 W	
800.00	4.00	326.75	799.84	5.84	-3.83	625,367.60	1,238,132.63	39° 31' 9.664 N	108° 12' 3.494 W	
900.00	6.00	326.75	899.45	13.12	-8.60	625,375.03	1,238,128.07	39° 31' 9.736 N	108° 12' 3.555 W	
1,000.00	8.00	326.75	998.70	23.32	-15.29	625,385.41	1,238,121.69	39° 31' 9.837 N	108° 12' 3.641 W	
1,100.00	10.00	326.75	1,097.47	36.40	-23.86	625,398.74	1,238,113.51	39° 31' 9.966 N	108° 12' 3.750 W	
1,200.00	12.00	326.75	1,195.62	52.35	-34.33	625,415.00	1,238,103.52	39° 31' 10.124 N	108° 12' 3.884 W	
1,300.00	14.00	326.75	1,293.06	71.16	-46.66	625,434.17	1,238,091.76	39° 31' 10.310 N	108° 12' 4.041 W	
1,350.00	15.00	326.75	1,341.46	81.63	-53.52	625,444.84	1,238,085.21	39° 31' 10.413 N	108° 12' 4.129 W	
1,400.00	15.00	326.75	1,389.76	92.46	-60.62	625,455.87	1,238,078.43	39° 31' 10.520 N	108° 12' 4.219 W	
1,500.00	15.00	326.75	1,486.35	114.10	-74.81	625,477.93	1,238,064.89	39° 31' 10.734 N	108° 12' 4.400 W	
1,600.00	15.00	326.75	1,582.94	135.75	-89.00	625,499.98	1,238,051.35	39° 31' 10.948 N	108° 12' 4.581 W	
1,700.00	15.00	326.75	1,679.54	157.39	-103.19	625,522.04	1,238,037.81	39° 31' 11.162 N	108° 12' 4.762 W	
1,800.00	15.00	326.75	1,776.13	179.03	-117.38	625,544.10	1,238,024.27	39° 31' 11.376 N	108° 12' 4.943 W	
1,900.00	15.00	326.75	1,872.72	200.68	-131.57	625,566.16	1,238,010.73	39° 31' 11.590 N	108° 12' 5.125 W	
2,000.00	15.00	326.75	1,969.31	222.32	-145.76	625,588.21	1,237,997.19	39° 31' 11.804 N	108° 12' 5.306 W	
2,100.00	15.00	326.75	2,065.91	243.97	-159.96	625,610.27	1,237,983.64	39° 31' 12.018 N	108° 12' 5.487 W	
2,200.00	15.00	326.75	2,162.50	265.61	-174.15	625,632.33	1,237,970.10	39° 31' 12.232 N	108° 12' 5.668 W	
2,300.00	15.00	326.75	2,259.09	287.26	-188.34	625,654.38	1,237,956.56	39° 31' 12.446 N	108° 12' 5.849 W	
2,400.00	15.00	326.75	2,355.68	308.90	-202.53	625,676.44	1,237,943.02	39° 31' 12.660 N	108° 12' 6.030 W	
2,500.00	15.00	326.75	2,452.28	330.55	-216.72	625,698.50	1,237,929.48	39° 31' 12.874 N	108° 12' 6.211 W	
2,600.00	15.00	326.75	2,548.87	352.19	-230.91	625,720.55	1,237,915.94	39° 31' 13.088 N	108° 12' 6.392 W	
2,700.00	15.00	326.75	2,645.46	373.83	-245.10	625,742.61	1,237,902.40	39° 31' 13.301 N	108° 12' 6.573 W	
2,800.00	15.00	326.75	2,742.05	395.48	-259.29	625,764.67	1,237,888.85	39° 31' 13.515 N	108° 12' 6.754 W	
2,900.00	15.00	326.75	2,838.65	417.12	-273.48	625,786.72	1,237,875.31	39° 31' 13.729 N	108° 12' 6.936 W	
3,000.00	15.00	326.75	2,935.24	438.77	-287.68	625,808.78	1,237,861.77	39° 31' 13.943 N	108° 12' 7.117 W	
9 5/8"										
3,100.00	15.00	326.75	3,031.83	460.41	-301.87	625,830.84	1,237,848.23	39° 31' 14.157 N	108° 12' 7.298 W	
3,200.00	15.00	326.75	3,128.42	482.06	-316.06	625,852.89	1,237,834.69	39° 31' 14.371 N	108° 12' 7.479 W	
3,300.00	15.00	326.75	3,225.02	503.70	-330.25	625,874.95	1,237,821.15	39° 31' 14.585 N	108° 12' 7.660 W	
3,400.00	15.00	326.75	3,321.61	525.35	-344.44	625,897.01	1,237,807.61	39° 31' 14.799 N	108° 12' 7.841 W	
3,500.00	15.00	326.75	3,418.20	546.99	-358.63	625,919.06	1,237,794.07	39° 31' 15.013 N	108° 12' 8.022 W	
3,600.00	15.00	326.75	3,514.80	568.64	-372.82	625,941.12	1,237,780.52	39° 31' 15.227 N	108° 12' 8.203 W	
3,700.00	15.00	326.75	3,611.39	590.28	-387.01	625,963.18	1,237,766.98	39° 31' 15.441 N	108° 12' 8.384 W	
3,800.00	15.00	326.75	3,707.98	611.92	-401.20	625,985.23	1,237,753.44	39° 31' 15.655 N	108° 12' 8.565 W	
3,900.00	15.00	326.75	3,804.57	633.57	-415.40	626,007.29	1,237,739.90	39° 31' 15.869 N	108° 12' 8.746 W	
4,000.00	15.00	326.75	3,901.17	655.21	-429.59	626,029.35	1,237,726.36	39° 31' 16.082 N	108° 12' 8.928 W	
4,100.00	15.00	326.75	3,997.76	676.86	-443.78	626,051.41	1,237,712.82	39° 31' 16.296 N	108° 12' 9.109 W	
4,200.00	15.00	326.75	4,094.35	698.50	-457.97	626,073.46	1,237,699.28	39° 31' 16.510 N	108° 12' 9.290 W	
4,300.00	15.00	326.75	4,190.94	720.15	-472.16	626,095.52	1,237,685.73	39° 31' 16.724 N	108° 12' 9.471 W	
4,400.00	15.00	326.75	4,287.54	741.79	-486.35	626,117.58	1,237,672.19	39° 31' 16.938 N	108° 12' 9.652 W	
4,500.00	15.00	326.75	4,384.13	763.44	-500.54	626,139.63	1,237,658.65	39° 31' 17.152 N	108° 12' 9.833 W	
4,600.00	15.00	326.75	4,480.72	785.08	-514.73	626,161.69	1,237,645.11	39° 31' 17.366 N	108° 12' 10.014 W	
4,700.00	15.00	326.75	4,577.31	806.73	-528.92	626,183.75	1,237,631.57	39° 31' 17.580 N	108° 12' 10.195 W	
4,718.45	15.00	326.75	4,595.13	810.72	-531.54	626,187.82	1,237,629.07	39° 31' 17.619 N	108° 12' 10.229 W	
4,800.00	13.37	326.75	4,674.20	827.43	-542.50	626,204.85	1,237,618.61	39° 31' 17.785 N	108° 12' 10.369 W	

Oxy
Planning Report - Geographic

Database:	HOPSPP	Local Co-ordinate Reference:	Well Cascade Creek 697-15-38
Company:	ENGINEERING CALCS	TVD Reference:	WELL @ 8625.00ft (Original Well Elev)
Project:	Nasik	MD Reference:	WELL @ 8625.00ft (Original Well Elev)
Site:	Cascade Creek 697-15-54	North Reference:	True
Well:	Cascade Creek 697-15-38	Survey Calculation Method:	Minimum Curvature
Wellbore:	CC 697-15-38		
Design:	CC 697-15-38Plan v1		

Planned Survey										
Measured			Vertical			Map		Map		
Depth (ft)	Inclination (°)	Azimuth (°)	Depth (ft)	+N/-S (ft)	+E/-W (ft)	Northing (ft)	Easting (ft)	Latitude	Longitude	
4,900.00	11.37	326.75	4,771.87	845.34	-554.24	626,223.10	1,237,607.41	39° 31' 17.962 N	108° 12' 10.518 W	
4,939.86	10.57	326.75	4,811.00	851.69	-558.40	626,229.56	1,237,603.44	39° 31' 18.024 N	108° 12' 10.571 W	
Fort Union										
5,000.00	9.37	326.75	4,870.23	860.39	-564.11	626,238.44	1,237,597.99	39° 31' 18.110 N	108° 12' 10.644 W	
5,100.00	7.37	326.75	4,969.16	872.57	-572.09	626,250.84	1,237,590.38	39° 31' 18.231 N	108° 12' 10.746 W	
5,200.00	5.37	326.75	5,068.54	881.84	-578.17	626,260.29	1,237,584.57	39° 31' 18.322 N	108° 12' 10.824 W	
5,300.00	3.37	326.75	5,168.24	888.21	-582.35	626,266.78	1,237,580.59	39° 31' 18.385 N	108° 12' 10.877 W	
5,400.00	1.37	326.75	5,268.15	891.67	-584.62	626,270.31	1,237,578.43	39° 31' 18.419 N	108° 12' 10.906 W	
5,468.45	0.00	0.00	5,336.60	892.35	-585.07	626,271.00	1,237,578.00	39° 31' 18.426 N	108° 12' 10.912 W	
5,500.00	0.00	0.00	5,368.15	892.35	-585.07	626,271.00	1,237,578.00	39° 31' 18.426 N	108° 12' 10.912 W	
5,600.00	0.00	0.00	5,468.15	892.35	-585.07	626,271.00	1,237,578.00	39° 31' 18.426 N	108° 12' 10.912 W	
5,700.00	0.00	0.00	5,568.15	892.35	-585.07	626,271.00	1,237,578.00	39° 31' 18.426 N	108° 12' 10.912 W	
5,800.00	0.00	0.00	5,668.15	892.35	-585.07	626,271.00	1,237,578.00	39° 31' 18.426 N	108° 12' 10.912 W	
5,900.00	0.00	0.00	5,768.15	892.35	-585.07	626,271.00	1,237,578.00	39° 31' 18.426 N	108° 12' 10.912 W	
6,000.00	0.00	0.00	5,868.15	892.35	-585.07	626,271.00	1,237,578.00	39° 31' 18.426 N	108° 12' 10.912 W	
6,100.00	0.00	0.00	5,968.15	892.35	-585.07	626,271.00	1,237,578.00	39° 31' 18.426 N	108° 12' 10.912 W	
6,200.00	0.00	0.00	6,068.15	892.35	-585.07	626,271.00	1,237,578.00	39° 31' 18.426 N	108° 12' 10.912 W	
6,205.85	0.00	0.00	6,074.00	892.35	-585.07	626,271.00	1,237,578.00	39° 31' 18.426 N	108° 12' 10.912 W	
Mesaverde Group Top										
6,300.00	0.00	0.00	6,168.15	892.35	-585.07	626,271.00	1,237,578.00	39° 31' 18.426 N	108° 12' 10.912 W	
6,400.00	0.00	0.00	6,268.15	892.35	-585.07	626,271.00	1,237,578.00	39° 31' 18.426 N	108° 12' 10.912 W	
6,430.85	0.00	0.00	6,299.00	892.35	-585.07	626,271.00	1,237,578.00	39° 31' 18.426 N	108° 12' 10.912 W	
Williams Fork ("base Ohio Creek")										
6,500.00	0.00	0.00	6,368.15	892.35	-585.07	626,271.00	1,237,578.00	39° 31' 18.426 N	108° 12' 10.912 W	
6,600.00	0.00	0.00	6,468.15	892.35	-585.07	626,271.00	1,237,578.00	39° 31' 18.426 N	108° 12' 10.912 W	
6,700.00	0.00	0.00	6,568.15	892.35	-585.07	626,271.00	1,237,578.00	39° 31' 18.426 N	108° 12' 10.912 W	
6,800.00	0.00	0.00	6,668.15	892.35	-585.07	626,271.00	1,237,578.00	39° 31' 18.426 N	108° 12' 10.912 W	
6,900.00	0.00	0.00	6,768.15	892.35	-585.07	626,271.00	1,237,578.00	39° 31' 18.426 N	108° 12' 10.912 W	
6,957.85	0.00	0.00	6,826.00	892.35	-585.07	626,271.00	1,237,578.00	39° 31' 18.426 N	108° 12' 10.912 W	
Williams Fork Shale Marker										
7,000.00	0.00	0.00	6,868.15	892.35	-585.07	626,271.00	1,237,578.00	39° 31' 18.426 N	108° 12' 10.912 W	
7,100.00	0.00	0.00	6,968.15	892.35	-585.07	626,271.00	1,237,578.00	39° 31' 18.426 N	108° 12' 10.912 W	
7,200.00	0.00	0.00	7,068.15	892.35	-585.07	626,271.00	1,237,578.00	39° 31' 18.426 N	108° 12' 10.912 W	
7,300.00	0.00	0.00	7,168.15	892.35	-585.07	626,271.00	1,237,578.00	39° 31' 18.426 N	108° 12' 10.912 W	
7,400.00	0.00	0.00	7,268.15	892.35	-585.07	626,271.00	1,237,578.00	39° 31' 18.426 N	108° 12' 10.912 W	
7,409.85	0.00	0.00	7,278.00	892.35	-585.07	626,271.00	1,237,578.00	39° 31' 18.426 N	108° 12' 10.912 W	
Continuous Top of Gas										
7,500.00	0.00	0.00	7,368.15	892.35	-585.07	626,271.00	1,237,578.00	39° 31' 18.426 N	108° 12' 10.912 W	
7,600.00	0.00	0.00	7,468.15	892.35	-585.07	626,271.00	1,237,578.00	39° 31' 18.426 N	108° 12' 10.912 W	
7,700.00	0.00	0.00	7,568.15	892.35	-585.07	626,271.00	1,237,578.00	39° 31' 18.426 N	108° 12' 10.912 W	
7,800.00	0.00	0.00	7,668.15	892.35	-585.07	626,271.00	1,237,578.00	39° 31' 18.426 N	108° 12' 10.912 W	
7,900.00	0.00	0.00	7,768.15	892.35	-585.07	626,271.00	1,237,578.00	39° 31' 18.426 N	108° 12' 10.912 W	
8,000.00	0.00	0.00	7,868.15	892.35	-585.07	626,271.00	1,237,578.00	39° 31' 18.426 N	108° 12' 10.912 W	
8,100.00	0.00	0.00	7,968.15	892.35	-585.07	626,271.00	1,237,578.00	39° 31' 18.426 N	108° 12' 10.912 W	
8,200.00	0.00	0.00	8,068.15	892.35	-585.07	626,271.00	1,237,578.00	39° 31' 18.426 N	108° 12' 10.912 W	
8,300.00	0.00	0.00	8,168.15	892.35	-585.07	626,271.00	1,237,578.00	39° 31' 18.426 N	108° 12' 10.912 W	
8,400.00	0.00	0.00	8,268.15	892.35	-585.07	626,271.00	1,237,578.00	39° 31' 18.426 N	108° 12' 10.912 W	
8,500.00	0.00	0.00	8,368.15	892.35	-585.07	626,271.00	1,237,578.00	39° 31' 18.426 N	108° 12' 10.912 W	
8,600.00	0.00	0.00	8,468.15	892.35	-585.07	626,271.00	1,237,578.00	39° 31' 18.426 N	108° 12' 10.912 W	
8,700.00	0.00	0.00	8,568.15	892.35	-585.07	626,271.00	1,237,578.00	39° 31' 18.426 N	108° 12' 10.912 W	
8,724.85	0.00	0.00	8,593.00	892.35	-585.07	626,271.00	1,237,578.00	39° 31' 18.426 N	108° 12' 10.912 W	
Cameo Coal										
8,800.00	0.00	0.00	8,668.15	892.35	-585.07	626,271.00	1,237,578.00	39° 31' 18.426 N	108° 12' 10.912 W	
8,900.00	0.00	0.00	8,768.15	892.35	-585.07	626,271.00	1,237,578.00	39° 31' 18.426 N	108° 12' 10.912 W	

Oxy
Planning Report - Geographic

Database:	HOPSPP	Local Co-ordinate Reference:	Well Cascade Creek 697-15-38
Company:	ENGINEERING CALCS	TVD Reference:	WELL @ 8625.00ft (Original Well Elev)
Project:	Nasik	MD Reference:	WELL @ 8625.00ft (Original Well Elev)
Site:	Cascade Creek 697-15-54	North Reference:	True
Well:	Cascade Creek 697-15-38	Survey Calculation Method:	Minimum Curvature
Wellbore:	CC 697-15-38		
Design:	CC 697-15-38Plan v1		

Planned Survey									
Measured Depth (ft)	Inclination (°)	Azimuth (°)	Vertical Depth (ft)	+N/-S (ft)	+E/-W (ft)	Map Northing (ft)	Map Easting (ft)	Latitude	Longitude
9,000.00	0.00	0.00	8,868.15	892.35	-585.07	626,271.00	1,237,578.00	39° 31' 18.426 N	108° 12' 10.912 W
9,100.00	0.00	0.00	8,968.15	892.35	-585.07	626,271.00	1,237,578.00	39° 31' 18.426 N	108° 12' 10.912 W
9,125.85	0.00	0.00	8,994.00	892.35	-585.07	626,271.00	1,237,578.00	39° 31' 18.426 N	108° 12' 10.912 W
Rollins									
9,200.00	0.00	0.00	9,068.15	892.35	-585.07	626,271.00	1,237,578.00	39° 31' 18.426 N	108° 12' 10.912 W
9,300.00	0.00	0.00	9,168.15	892.35	-585.07	626,271.00	1,237,578.00	39° 31' 18.426 N	108° 12' 10.912 W
9,325.00	0.00	0.00	9,193.15	892.35	-585.07	626,271.00	1,237,578.00	39° 31' 18.426 N	108° 12' 10.912 W
TD									
9,325.85	0.00	0.00	9,194.00	892.35	-585.07	626,271.00	1,237,578.00	39° 31' 18.426 N	108° 12' 10.912 W

Design Targets									
Target Name	Dip Angle (°)	Dip Dir. (°)	TVD (ft)	+N/-S (ft)	+E/-W (ft)	Northing (ft)	Easting (ft)	Latitude	Longitude
- hit/miss target									
- Shape									
Srf 697-15-38	0.00	358.30	0.00	0.42	14.23	625,361.65	1,238,150.52	39° 31' 9.611 N	108° 12' 3.264 W
- plan misses target center by 14.24ft at 0.00ft MD (0.00 TVD, 0.00 N, 0.00 E)									
- Point									
BHL 697-15-38	0.00	358.30	9,194.00	892.35	-585.07	626,271.00	1,237,578.00	39° 31' 18.426 N	108° 12' 10.912 W
- plan hits target center									
- Circle (radius 100.00)									

Casing Points					
Measured Depth (ft)	Vertical Depth (ft)	Name	Casing Diameter (in)	Hole Diameter (in)	
90.00	90.00	16"	20.000	26.000	
3,000.00	2,935.24	9 5/8"	9.625	12.250	
9,325.85	9,194.00	4 1/2"	4.500	8.750	

Formations					
Measured Depth (ft)	Vertical Depth (ft)	Name	Lithology	Dip (°)	Dip Direction (°)
4,939.86	4,811.00	Fort Union		0.00	
6,205.85	6,074.00	Mesaverde Group Top			
6,430.85	6,299.00	Williams Fork ("base Ohio Creek")			
6,957.85	6,826.00	Williams Fork Shale Marker			
7,409.85	7,278.00	Continuous Top of Gas			
8,724.85	8,593.00	Cameo Coal			
9,125.85	8,994.00	Rollins			
9,325.00	9,193.15	TD		0.00	

ENGINEERING CALCS

Nasik

Cascade Creek 697-15-54

Cascade Creek 697-15-38

CC 697-15-38

Plan: CC 697-15-38Plan v1

Standard Planning Report

12 February, 2014

Oxy

Planning Report

Database:	HOPSPP	Local Co-ordinate Reference:	Well Cascade Creek 697-15-38
Company:	ENGINEERING CALCS	TVD Reference:	WELL @ 8625.00ft (Original Well Elev)
Project:	Nasik	MD Reference:	WELL @ 8625.00ft (Original Well Elev)
Site:	Cascade Creek 697-15-54	North Reference:	True
Well:	Cascade Creek 697-15-38	Survey Calculation Method:	Minimum Curvature
Wellbore:	CC 697-15-38		
Design:	CC 697-15-38Plan v1		

Project	Nasik, Planning		
Map System:	US State Plane 1927 (Exact solution)	System Datum:	Mean Sea Level
Geo Datum:	NAD 1927 (NADCON CONUS)		
Map Zone:	Colorado Central 502		

Site	Cascade Creek 697-15-54, 16-54		
Site Position:		Northing:	625,361.65 ft
From:	Map	Easting:	1,238,150.52 ft
Position Uncertainty:	0.00 ft	Slot Radius:	13.200 in
		Latitude:	39° 31' 9.611 N
		Longitude:	108° 12' 3.264 W
		Grid Convergence:	-1.70 °

Well	Cascade Creek 697-15-38		
Well Position	+N/-S	-0.42 ft	Northing: 625,361.65 ft
	+E/-W	-14.23 ft	Easting: 1,238,136.28 ft
Position Uncertainty	0.00 ft	Wellhead Elevation:	Latitude: 39° 31' 9.607 N
			Longitude: 108° 12' 3.446 W
			Ground Level: 8,640.00 ft

Wellbore	CC 697-15-38				
Magnetics	Model Name	Sample Date	Declination (°)	Dip Angle (°)	Field Strength (nT)
	IGRF2010	1/8/2014	10.11	65.65	51,956

Design	CC 697-15-38Plan v1			
Audit Notes:				
Version:	Phase:	PROTOTYPE	Tie On Depth:	0.00
Vertical Section:	Depth From (TVD) (ft)	+N/-S (ft)	+E/-W (ft)	Direction (°)
	0.00	0.00	0.00	326.75

Plan Sections										
Measured Depth (ft)	Inclination (°)	Azimuth (°)	Vertical Depth (ft)	+N/-S (ft)	+E/-W (ft)	Dogleg Rate (°/100ft)	Build Rate (°/100ft)	Turn Rate (°/100ft)	TFO (°)	Target
0.00	0.00	0.00	0.00	0.00	0.00	0.00	0.00	0.00	0.00	
600.00	0.00	0.00	600.00	0.00	0.00	0.00	0.00	0.00	0.00	
1,350.00	15.00	326.75	1,341.46	81.63	-53.52	2.00	2.00	0.00	326.75	
4,718.45	15.00	326.75	4,595.13	810.72	-531.54	0.00	0.00	0.00	0.00	
5,468.45	0.00	0.00	5,336.60	892.35	-585.07	2.00	-2.00	0.00	180.00	
9,325.85	0.00	0.00	9,194.00	892.35	-585.07	0.00	0.00	0.00	0.00	BHL 697-15-38

Oxy Planning Report

Database:	HOPSPP	Local Co-ordinate Reference:	Well Cascade Creek 697-15-38
Company:	ENGINEERING CALCS	TVD Reference:	WELL @ 8625.00ft (Original Well Elev)
Project:	Nasik	MD Reference:	WELL @ 8625.00ft (Original Well Elev)
Site:	Cascade Creek 697-15-54	North Reference:	True
Well:	Cascade Creek 697-15-38	Survey Calculation Method:	Minimum Curvature
Wellbore:	CC 697-15-38		
Design:	CC 697-15-38Plan v1		

Planned Survey									
Measured Depth (ft)	Inclination (°)	Azimuth (°)	Vertical Depth (ft)	+N/-S (ft)	+E/-W (ft)	Vertical Section (ft)	Dogleg Rate (°/100ft)	Build Rate (°/100ft)	Turn Rate (°/100ft)
0.00	0.00	0.00	0.00	0.00	0.00	0.00	0.00	0.00	0.00
90.00	0.00	0.00	90.00	0.00	0.00	0.00	0.00	0.00	0.00
16"									
100.00	0.00	0.00	100.00	0.00	0.00	0.00	0.00	0.00	0.00
200.00	0.00	0.00	200.00	0.00	0.00	0.00	0.00	0.00	0.00
300.00	0.00	0.00	300.00	0.00	0.00	0.00	0.00	0.00	0.00
400.00	0.00	0.00	400.00	0.00	0.00	0.00	0.00	0.00	0.00
500.00	0.00	0.00	500.00	0.00	0.00	0.00	0.00	0.00	0.00
600.00	0.00	0.00	600.00	0.00	0.00	0.00	0.00	0.00	0.00
700.00	2.00	326.75	699.98	1.46	-0.96	1.75	2.00	2.00	0.00
800.00	4.00	326.75	799.84	5.84	-3.83	6.98	2.00	2.00	0.00
900.00	6.00	326.75	899.45	13.12	-8.60	15.69	2.00	2.00	0.00
1,000.00	8.00	326.75	998.70	23.32	-15.29	27.88	2.00	2.00	0.00
1,100.00	10.00	326.75	1,097.47	36.40	-23.86	43.52	2.00	2.00	0.00
1,200.00	12.00	326.75	1,195.62	52.35	-34.33	62.60	2.00	2.00	0.00
1,300.00	14.00	326.75	1,293.06	71.16	-46.66	85.10	2.00	2.00	0.00
1,350.00	15.00	326.75	1,341.46	81.63	-53.52	97.62	2.00	2.00	0.00
1,400.00	15.00	326.75	1,389.76	92.46	-60.62	110.56	0.00	0.00	0.00
1,500.00	15.00	326.75	1,486.35	114.10	-74.81	136.44	0.00	0.00	0.00
1,600.00	15.00	326.75	1,582.94	135.75	-89.00	162.32	0.00	0.00	0.00
1,700.00	15.00	326.75	1,679.54	157.39	-103.19	188.20	0.00	0.00	0.00
1,800.00	15.00	326.75	1,776.13	179.03	-117.38	214.08	0.00	0.00	0.00
1,900.00	15.00	326.75	1,872.72	200.68	-131.57	239.97	0.00	0.00	0.00
2,000.00	15.00	326.75	1,969.31	222.32	-145.76	265.85	0.00	0.00	0.00
2,100.00	15.00	326.75	2,065.91	243.97	-159.96	291.73	0.00	0.00	0.00
2,200.00	15.00	326.75	2,162.50	265.61	-174.15	317.61	0.00	0.00	0.00
2,300.00	15.00	326.75	2,259.09	287.26	-188.34	343.49	0.00	0.00	0.00
2,400.00	15.00	326.75	2,355.68	308.90	-202.53	369.38	0.00	0.00	0.00
2,500.00	15.00	326.75	2,452.28	330.55	-216.72	395.26	0.00	0.00	0.00
2,600.00	15.00	326.75	2,548.87	352.19	-230.91	421.14	0.00	0.00	0.00
2,700.00	15.00	326.75	2,645.46	373.83	-245.10	447.02	0.00	0.00	0.00
2,800.00	15.00	326.75	2,742.05	395.48	-259.29	472.90	0.00	0.00	0.00
2,900.00	15.00	326.75	2,838.65	417.12	-273.48	498.78	0.00	0.00	0.00
3,000.00	15.00	326.75	2,935.24	438.77	-287.68	524.67	0.00	0.00	0.00
9 5/8"									
3,100.00	15.00	326.75	3,031.83	460.41	-301.87	550.55	0.00	0.00	0.00
3,200.00	15.00	326.75	3,128.42	482.06	-316.06	576.43	0.00	0.00	0.00
3,300.00	15.00	326.75	3,225.02	503.70	-330.25	602.31	0.00	0.00	0.00
3,400.00	15.00	326.75	3,321.61	525.35	-344.44	628.19	0.00	0.00	0.00
3,500.00	15.00	326.75	3,418.20	546.99	-358.63	654.08	0.00	0.00	0.00
3,600.00	15.00	326.75	3,514.80	568.64	-372.82	679.96	0.00	0.00	0.00
3,700.00	15.00	326.75	3,611.39	590.28	-387.01	705.84	0.00	0.00	0.00
3,800.00	15.00	326.75	3,707.98	611.92	-401.20	731.72	0.00	0.00	0.00
3,900.00	15.00	326.75	3,804.57	633.57	-415.40	757.60	0.00	0.00	0.00
4,000.00	15.00	326.75	3,901.17	655.21	-429.59	783.49	0.00	0.00	0.00
4,100.00	15.00	326.75	3,997.76	676.86	-443.78	809.37	0.00	0.00	0.00
4,200.00	15.00	326.75	4,094.35	698.50	-457.97	835.25	0.00	0.00	0.00
4,300.00	15.00	326.75	4,190.94	720.15	-472.16	861.13	0.00	0.00	0.00
4,400.00	15.00	326.75	4,287.54	741.79	-486.35	887.01	0.00	0.00	0.00
4,500.00	15.00	326.75	4,384.13	763.44	-500.54	912.90	0.00	0.00	0.00
4,600.00	15.00	326.75	4,480.72	785.08	-514.73	938.78	0.00	0.00	0.00
4,700.00	15.00	326.75	4,577.31	806.73	-528.92	964.66	0.00	0.00	0.00
4,718.45	15.00	326.75	4,595.13	810.72	-531.54	969.43	0.00	0.00	0.00
4,800.00	13.37	326.75	4,674.20	827.43	-542.50	989.42	2.00	-2.00	0.00

Oxy

Planning Report

Database:	HOPSP	Local Co-ordinate Reference:	Well Cascade Creek 697-15-38
Company:	ENGINEERING CALCS	TVD Reference:	WELL @ 8625.00ft (Original Well Elev)
Project:	Nasik	MD Reference:	WELL @ 8625.00ft (Original Well Elev)
Site:	Cascade Creek 697-15-54	North Reference:	True
Well:	Cascade Creek 697-15-38	Survey Calculation Method:	Minimum Curvature
Wellbore:	CC 697-15-38		
Design:	CC 697-15-38Plan v1		

Planned Survey									
Measured Depth (ft)	Inclination (°)	Azimuth (°)	Vertical Depth (ft)	+N/-S (ft)	+E/-W (ft)	Vertical Section (ft)	Dogleg Rate (°/100ft)	Build Rate (°/100ft)	Turn Rate (°/100ft)
4,900.00	11.37	326.75	4,771.87	845.34	-554.24	1,010.84	2.00	-2.00	0.00
4,939.86	10.57	326.75	4,811.00	851.69	-558.40	1,018.42	2.00	-2.00	0.00
Fort Union									
5,000.00	9.37	326.75	4,870.23	860.39	-564.11	1,028.83	2.00	-2.00	0.00
5,100.00	7.37	326.75	4,969.16	872.57	-572.09	1,043.39	2.00	-2.00	0.00
5,200.00	5.37	326.75	5,068.54	881.84	-578.17	1,054.48	2.00	-2.00	0.00
5,300.00	3.37	326.75	5,168.24	888.21	-582.35	1,062.10	2.00	-2.00	0.00
5,400.00	1.37	326.75	5,268.15	891.67	-584.62	1,066.23	2.00	-2.00	0.00
5,468.45	0.00	0.00	5,336.60	892.35	-585.07	1,067.05	2.00	-2.00	0.00
5,500.00	0.00	0.00	5,368.15	892.35	-585.07	1,067.05	0.00	0.00	0.00
5,600.00	0.00	0.00	5,468.15	892.35	-585.07	1,067.05	0.00	0.00	0.00
5,700.00	0.00	0.00	5,568.15	892.35	-585.07	1,067.05	0.00	0.00	0.00
5,800.00	0.00	0.00	5,668.15	892.35	-585.07	1,067.05	0.00	0.00	0.00
5,900.00	0.00	0.00	5,768.15	892.35	-585.07	1,067.05	0.00	0.00	0.00
6,000.00	0.00	0.00	5,868.15	892.35	-585.07	1,067.05	0.00	0.00	0.00
6,100.00	0.00	0.00	5,968.15	892.35	-585.07	1,067.05	0.00	0.00	0.00
6,200.00	0.00	0.00	6,068.15	892.35	-585.07	1,067.05	0.00	0.00	0.00
6,205.85	0.00	0.00	6,074.00	892.35	-585.07	1,067.05	0.00	0.00	0.00
Mesaverde Group Top									
6,300.00	0.00	0.00	6,168.15	892.35	-585.07	1,067.05	0.00	0.00	0.00
6,400.00	0.00	0.00	6,268.15	892.35	-585.07	1,067.05	0.00	0.00	0.00
6,430.85	0.00	0.00	6,299.00	892.35	-585.07	1,067.05	0.00	0.00	0.00
Williams Fork ("base Ohio Creek")									
6,500.00	0.00	0.00	6,368.15	892.35	-585.07	1,067.05	0.00	0.00	0.00
6,600.00	0.00	0.00	6,468.15	892.35	-585.07	1,067.05	0.00	0.00	0.00
6,700.00	0.00	0.00	6,568.15	892.35	-585.07	1,067.05	0.00	0.00	0.00
6,800.00	0.00	0.00	6,668.15	892.35	-585.07	1,067.05	0.00	0.00	0.00
6,900.00	0.00	0.00	6,768.15	892.35	-585.07	1,067.05	0.00	0.00	0.00
6,957.85	0.00	0.00	6,826.00	892.35	-585.07	1,067.05	0.00	0.00	0.00
Williams Fork Shale Marker									
7,000.00	0.00	0.00	6,868.15	892.35	-585.07	1,067.05	0.00	0.00	0.00
7,100.00	0.00	0.00	6,968.15	892.35	-585.07	1,067.05	0.00	0.00	0.00
7,200.00	0.00	0.00	7,068.15	892.35	-585.07	1,067.05	0.00	0.00	0.00
7,300.00	0.00	0.00	7,168.15	892.35	-585.07	1,067.05	0.00	0.00	0.00
7,400.00	0.00	0.00	7,268.15	892.35	-585.07	1,067.05	0.00	0.00	0.00
7,409.85	0.00	0.00	7,278.00	892.35	-585.07	1,067.05	0.00	0.00	0.00
Continuous Top of Gas									
7,500.00	0.00	0.00	7,368.15	892.35	-585.07	1,067.05	0.00	0.00	0.00
7,600.00	0.00	0.00	7,468.15	892.35	-585.07	1,067.05	0.00	0.00	0.00
7,700.00	0.00	0.00	7,568.15	892.35	-585.07	1,067.05	0.00	0.00	0.00
7,800.00	0.00	0.00	7,668.15	892.35	-585.07	1,067.05	0.00	0.00	0.00
7,900.00	0.00	0.00	7,768.15	892.35	-585.07	1,067.05	0.00	0.00	0.00
8,000.00	0.00	0.00	7,868.15	892.35	-585.07	1,067.05	0.00	0.00	0.00
8,100.00	0.00	0.00	7,968.15	892.35	-585.07	1,067.05	0.00	0.00	0.00
8,200.00	0.00	0.00	8,068.15	892.35	-585.07	1,067.05	0.00	0.00	0.00
8,300.00	0.00	0.00	8,168.15	892.35	-585.07	1,067.05	0.00	0.00	0.00
8,400.00	0.00	0.00	8,268.15	892.35	-585.07	1,067.05	0.00	0.00	0.00
8,500.00	0.00	0.00	8,368.15	892.35	-585.07	1,067.05	0.00	0.00	0.00
8,600.00	0.00	0.00	8,468.15	892.35	-585.07	1,067.05	0.00	0.00	0.00
8,700.00	0.00	0.00	8,568.15	892.35	-585.07	1,067.05	0.00	0.00	0.00
8,724.85	0.00	0.00	8,593.00	892.35	-585.07	1,067.05	0.00	0.00	0.00
Cameo Coal									
8,800.00	0.00	0.00	8,668.15	892.35	-585.07	1,067.05	0.00	0.00	0.00

Oxy Planning Report

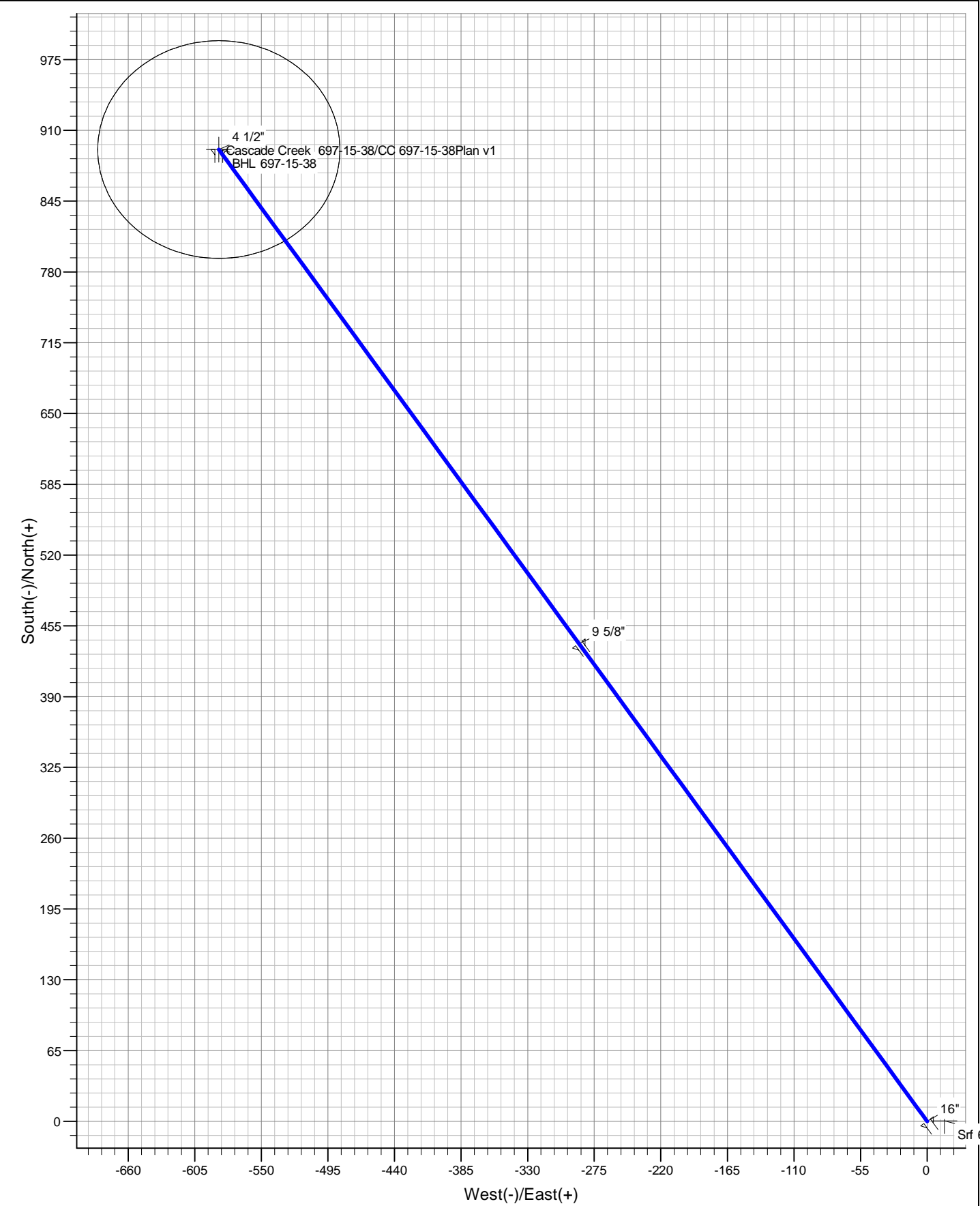
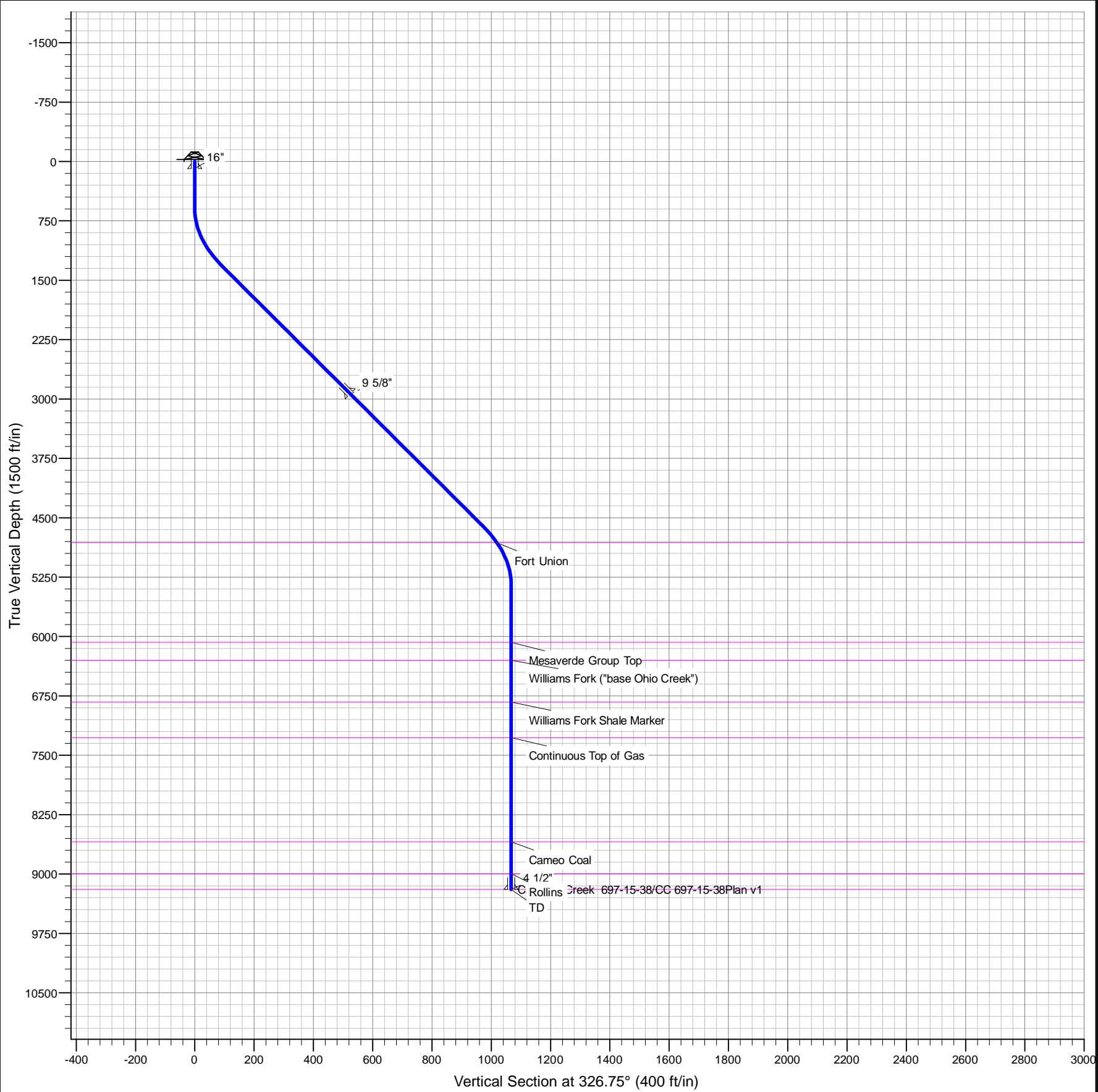
Database:	HOPSPP	Local Co-ordinate Reference:	Well Cascade Creek 697-15-38
Company:	ENGINEERING CALCS	TVD Reference:	WELL @ 8625.00ft (Original Well Elev)
Project:	Nasik	MD Reference:	WELL @ 8625.00ft (Original Well Elev)
Site:	Cascade Creek 697-15-54	North Reference:	True
Well:	Cascade Creek 697-15-38	Survey Calculation Method:	Minimum Curvature
Wellbore:	CC 697-15-38		
Design:	CC 697-15-38Plan v1		

Planned Survey									
Measured Depth (ft)	Inclination (°)	Azimuth (°)	Vertical Depth (ft)	+N/-S (ft)	+E/-W (ft)	Vertical Section (ft)	Dogleg Rate (°/100ft)	Build Rate (°/100ft)	Turn Rate (°/100ft)
8,900.00	0.00	0.00	8,768.15	892.35	-585.07	1,067.05	0.00	0.00	0.00
9,000.00	0.00	0.00	8,868.15	892.35	-585.07	1,067.05	0.00	0.00	0.00
9,100.00	0.00	0.00	8,968.15	892.35	-585.07	1,067.05	0.00	0.00	0.00
9,125.85	0.00	0.00	8,994.00	892.35	-585.07	1,067.05	0.00	0.00	0.00
Rollins									
9,200.00	0.00	0.00	9,068.15	892.35	-585.07	1,067.05	0.00	0.00	0.00
9,300.00	0.00	0.00	9,168.15	892.35	-585.07	1,067.05	0.00	0.00	0.00
9,325.00	0.00	0.00	9,193.15	892.35	-585.07	1,067.05	0.00	0.00	0.00
TD									
9,325.85	0.00	0.00	9,194.00	892.35	-585.07	1,067.05	0.00	0.00	0.00

Design Targets									
Target Name - hit/miss target - Shape	Dip Angle (°)	Dip Dir. (°)	TVD (ft)	+N/-S (ft)	+E/-W (ft)	Northing (ft)	Easting (ft)	Latitude	Longitude
Srf 697-15-38 - plan misses target center by 14.24ft at 0.00ft MD (0.00 TVD, 0.00 N, 0.00 E) - Point	0.00	358.30	0.00	0.42	14.23	625,361.65	1,238,150.52	39° 31' 9.611 N	108° 12' 3.264 W
BHL 697-15-38 - plan hits target center - Circle (radius 100.00)	0.00	358.30	9,194.00	892.35	-585.07	626,271.00	1,237,578.00	39° 31' 18.426 N	108° 12' 10.912 W

Casing Points					
Measured Depth (ft)	Vertical Depth (ft)	Name	Casing Diameter (in)	Hole Diameter (in)	
90.00	90.00	16"	20.000	26.000	
3,000.00	2,935.24	9 5/8"	9.625	12.250	
9,325.85	9,194.00	4 1/2"	4.500	8.750	

Formations					
Measured Depth (ft)	Vertical Depth (ft)	Name	Lithology	Dip (°)	Dip Direction (°)
4,939.86	4,811.00	Fort Union		0.00	
6,205.85	6,074.00	Mesaverde Group Top			
6,430.85	6,299.00	Williams Fork ("base Ohio Creek")			
6,957.85	6,826.00	Williams Fork Shale Marker			
7,409.85	7,278.00	Continuous Top of Gas			
8,724.85	8,593.00	Cameo Coal			
9,125.85	8,994.00	Rollins			
9,325.00	9,193.15	TD		0.00	



Plan: CC 697-15-38Plan v1 (Cascade Creek 697-15-38/CC 697-15-38)		
Created By: Oxy	Date: 11:20, February 12 2014	Name: Srf 697-15-38
Checked: _____	Date: _____	BHL 697-15-38
Reviewed: _____	Date: _____	
Approved: _____	Date: _____	

	DESIGN TARGET DETAILS								
	TVD	+N/-S	+E/-W	Northing	Easting	Latitude	Longitude	Shape	
7-15-380.00	0.42	14.23	625361.65	1238150.52	39° 31' 9.611 N	108° 12' 3.264 W	Point		
- plan misses target center by 14.24ft at 0.00ft MD (0.00 TVD, 0.00 N, 0.00 E)									
697-15-380.00	892.35	-585.07	626271.00	1237578.00	39° 31' 18.426 N	108° 12' 10.912 W	Circle (Radius: 100.00)		
- plan hits target center									

T

M

Azimuths to True North

Magnetic North: 10.12°

Magnetic Field

Strength: 51956.0snT

Dip Angle: 65.65°

Date: 1/8/2014

Model: IGRF2010

