

Conoco Phillips Company

Arapahoe County, Colorado

Sec. 11-T4S-R65W

Prosper Farms 4-65 11-12 1H

Plan B

Plan: Rev B0

Sperry Drilling Services

Proposal Report

03 February, 2014

Well Coordinates: 1,689,671.94 N, 3,242,040.78 E (39° 43' 25.70" N, 104° 38' 22.24" W)

Ground Level: 5,654.20 usft

Local Coordinate Origin:

Viewing Datum:

TVDs to System:

North Reference:

Unit System:

Geodetic Scale Factor Applied

Version: 5000.1 Build: 70

Centered on Well Prosper Farms 4-65 11-12 1H

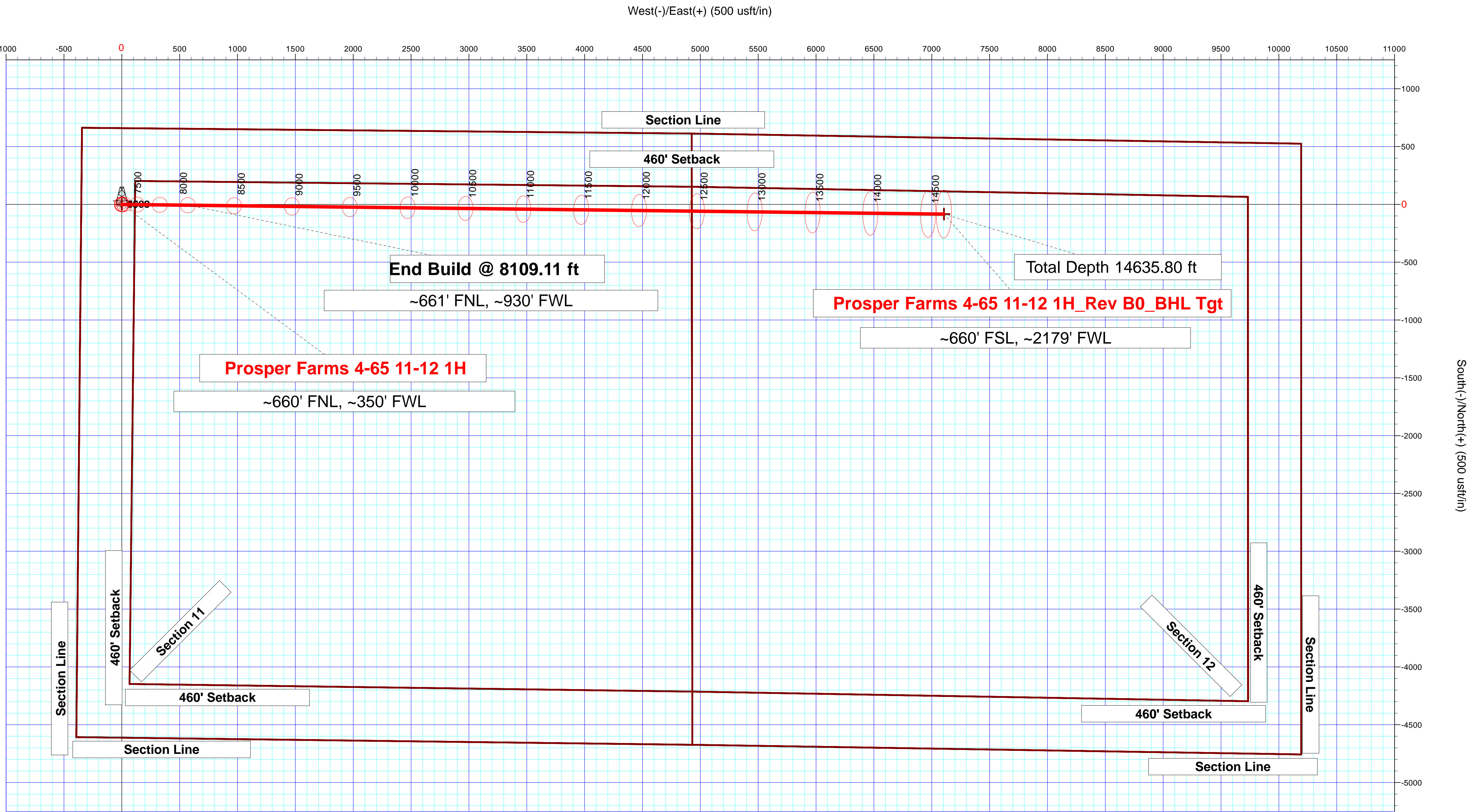
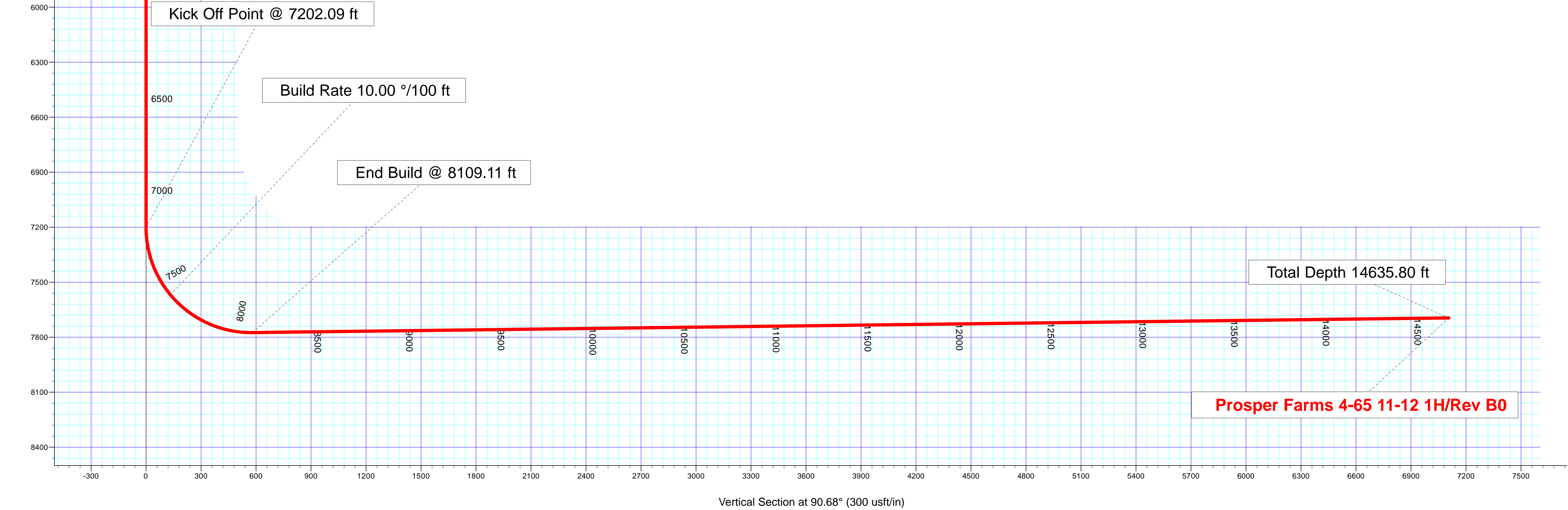
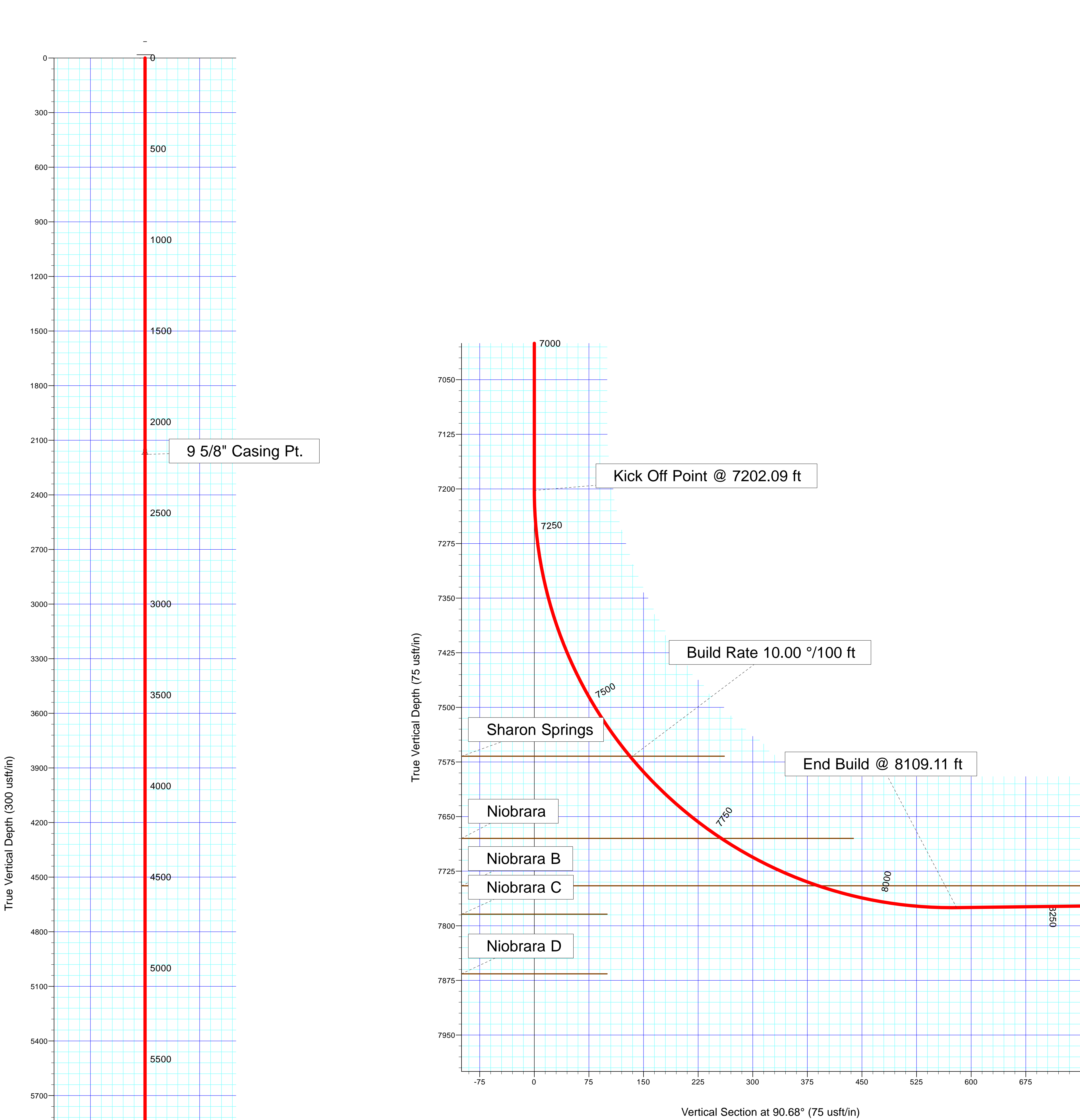
KB 24 ft @ 5678.20usft (H & P 280)

N

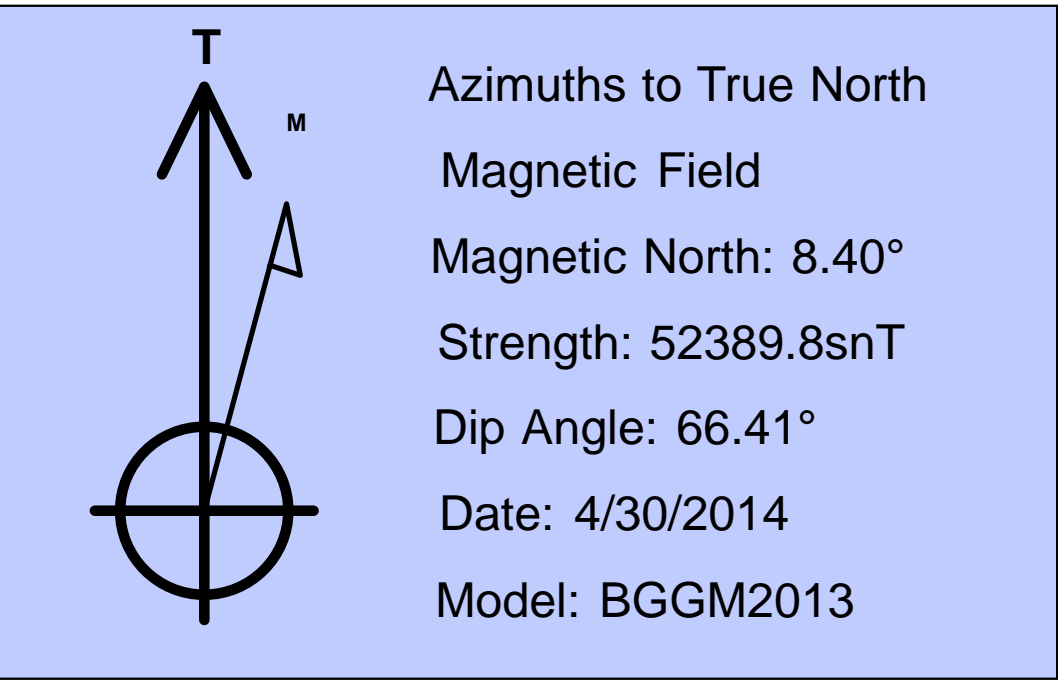
True

API - US Survey Feet - Custom

HALLIBURTON



SECTION DETAILS										
Sec	MD	Inc	Azi	TVD	+N/-S	+E/-W	Dleg	TFace	VSec	Target
1	0.00	0.00	0.00	0.00			0.00	0.00	0.00	
2	7202.09	0.00	0.00	7202.09			0.00	0.00	0.00	
3	8109.11	90.70	90.68	7775.00	-6.86	579.94	10.00	90.68	579.98	
4	14635.80	90.70	90.68	7695.00	-84.00	7105.68	0.00	0.00	7106.18	Prosper Farms 4-65 11-12 1H_Rev B0_BHL Tgt



Plan: Rev B0 (Prosper Farms 4-65 11-12 1H/Plan B)	
Created By: Kansa B. Becker	Date: 14:12, February 03 2014
Checked: _____	Date: _____
Reviewed: _____	Date: _____
Approved: _____	Date: _____

Plan Report for Prosper Farms 4-65 11-12 1H - Rev B0

Measured Depth (usft)	Inclination (°)	Azimuth (°)	Vertical Depth (usft)	+N/-S (usft)	+E/-W (usft)	Vertical Section (usft)	Dogleg Rate (°/100usft)	Build Rate (°/100usft)	Turn Rate (°/100usft)	Toolface Azimuth (°)
0.00	0.00	0.00	0.00	0.00	0.00	0.00	0.00	0.00	0.00	0.00
100.00	0.00	0.00	100.00	0.00	0.00	0.00	0.00	0.00	0.00	0.00
200.00	0.00	0.00	200.00	0.00	0.00	0.00	0.00	0.00	0.00	0.00
300.00	0.00	0.00	300.00	0.00	0.00	0.00	0.00	0.00	0.00	0.00
400.00	0.00	0.00	400.00	0.00	0.00	0.00	0.00	0.00	0.00	0.00
500.00	0.00	0.00	500.00	0.00	0.00	0.00	0.00	0.00	0.00	0.00
600.00	0.00	0.00	600.00	0.00	0.00	0.00	0.00	0.00	0.00	0.00
700.00	0.00	0.00	700.00	0.00	0.00	0.00	0.00	0.00	0.00	0.00
800.00	0.00	0.00	800.00	0.00	0.00	0.00	0.00	0.00	0.00	0.00
900.00	0.00	0.00	900.00	0.00	0.00	0.00	0.00	0.00	0.00	0.00
1,000.00	0.00	0.00	1,000.00	0.00	0.00	0.00	0.00	0.00	0.00	0.00
1,100.00	0.00	0.00	1,100.00	0.00	0.00	0.00	0.00	0.00	0.00	0.00
1,200.00	0.00	0.00	1,200.00	0.00	0.00	0.00	0.00	0.00	0.00	0.00
1,300.00	0.00	0.00	1,300.00	0.00	0.00	0.00	0.00	0.00	0.00	0.00
1,400.00	0.00	0.00	1,400.00	0.00	0.00	0.00	0.00	0.00	0.00	0.00
1,500.00	0.00	0.00	1,500.00	0.00	0.00	0.00	0.00	0.00	0.00	0.00
1,600.00	0.00	0.00	1,600.00	0.00	0.00	0.00	0.00	0.00	0.00	0.00
1,700.00	0.00	0.00	1,700.00	0.00	0.00	0.00	0.00	0.00	0.00	0.00
1,748.00	0.00	0.00	1,748.00	0.00	0.00	0.00	0.00	0.00	0.00	0.00
Fox Hills										
1,800.00	0.00	0.00	1,800.00	0.00	0.00	0.00	0.00	0.00	0.00	0.00
1,900.00	0.00	0.00	1,900.00	0.00	0.00	0.00	0.00	0.00	0.00	0.00
1,978.00	0.00	0.00	1,978.00	0.00	0.00	0.00	0.00	0.00	0.00	0.00
Pierre Shale										
2,000.00	0.00	0.00	2,000.00	0.00	0.00	0.00	0.00	0.00	0.00	0.00
2,100.00	0.00	0.00	2,100.00	0.00	0.00	0.00	0.00	0.00	0.00	0.00
2,178.00	0.00	0.00	2,178.00	0.00	0.00	0.00	0.00	0.00	0.00	0.00
Surface Casing - 9 5/8" Casing Pt.										
2,200.00	0.00	0.00	2,200.00	0.00	0.00	0.00	0.00	0.00	0.00	0.00
2,300.00	0.00	0.00	2,300.00	0.00	0.00	0.00	0.00	0.00	0.00	0.00
2,400.00	0.00	0.00	2,400.00	0.00	0.00	0.00	0.00	0.00	0.00	0.00
2,500.00	0.00	0.00	2,500.00	0.00	0.00	0.00	0.00	0.00	0.00	0.00
2,600.00	0.00	0.00	2,600.00	0.00	0.00	0.00	0.00	0.00	0.00	0.00
2,700.00	0.00	0.00	2,700.00	0.00	0.00	0.00	0.00	0.00	0.00	0.00
2,800.00	0.00	0.00	2,800.00	0.00	0.00	0.00	0.00	0.00	0.00	0.00
2,900.00	0.00	0.00	2,900.00	0.00	0.00	0.00	0.00	0.00	0.00	0.00
3,000.00	0.00	0.00	3,000.00	0.00	0.00	0.00	0.00	0.00	0.00	0.00
3,100.00	0.00	0.00	3,100.00	0.00	0.00	0.00	0.00	0.00	0.00	0.00
3,200.00	0.00	0.00	3,200.00	0.00	0.00	0.00	0.00	0.00	0.00	0.00
3,300.00	0.00	0.00	3,300.00	0.00	0.00	0.00	0.00	0.00	0.00	0.00
3,400.00	0.00	0.00	3,400.00	0.00	0.00	0.00	0.00	0.00	0.00	0.00
3,500.00	0.00	0.00	3,500.00	0.00	0.00	0.00	0.00	0.00	0.00	0.00
3,600.00	0.00	0.00	3,600.00	0.00	0.00	0.00	0.00	0.00	0.00	0.00
3,700.00	0.00	0.00	3,700.00	0.00	0.00	0.00	0.00	0.00	0.00	0.00
3,800.00	0.00	0.00	3,800.00	0.00	0.00	0.00	0.00	0.00	0.00	0.00
3,900.00	0.00	0.00	3,900.00	0.00	0.00	0.00	0.00	0.00	0.00	0.00
4,000.00	0.00	0.00	4,000.00	0.00	0.00	0.00	0.00	0.00	0.00	0.00
4,100.00	0.00	0.00	4,100.00	0.00	0.00	0.00	0.00	0.00	0.00	0.00
4,200.00	0.00	0.00	4,200.00	0.00	0.00	0.00	0.00	0.00	0.00	0.00
4,300.00	0.00	0.00	4,300.00	0.00	0.00	0.00	0.00	0.00	0.00	0.00
4,400.00	0.00	0.00	4,400.00	0.00	0.00	0.00	0.00	0.00	0.00	0.00
4,500.00	0.00	0.00	4,500.00	0.00	0.00	0.00	0.00	0.00	0.00	0.00
4,600.00	0.00	0.00	4,600.00	0.00	0.00	0.00	0.00	0.00	0.00	0.00
4,700.00	0.00	0.00	4,700.00	0.00	0.00	0.00	0.00	0.00	0.00	0.00
4,800.00	0.00	0.00	4,800.00	0.00	0.00	0.00	0.00	0.00	0.00	0.00
4,900.00	0.00	0.00	4,900.00	0.00	0.00	0.00	0.00	0.00	0.00	0.00
5,000.00	0.00	0.00	5,000.00	0.00	0.00	0.00	0.00	0.00	0.00	0.00
5,100.00	0.00	0.00	5,100.00	0.00	0.00	0.00	0.00	0.00	0.00	0.00

Plan Report for Prosper Farms 4-65 11-12 1H - Rev B0

Measured Depth (usft)	Inclination (°)	Azimuth (°)	Vertical Depth (usft)	+N/-S (usft)	+E/-W (usft)	Vertical Section (usft)	Dogleg Rate (°/100usft)	Build Rate (°/100usft)	Turn Rate (°/100usft)	Toolface Azimuth (°)
5,200.00	0.00	0.00	5,200.00	0.00	0.00	0.00	0.00	0.00	0.00	0.00
5,300.00	0.00	0.00	5,300.00	0.00	0.00	0.00	0.00	0.00	0.00	0.00
5,400.00	0.00	0.00	5,400.00	0.00	0.00	0.00	0.00	0.00	0.00	0.00
5,500.00	0.00	0.00	5,500.00	0.00	0.00	0.00	0.00	0.00	0.00	0.00
5,600.00	0.00	0.00	5,600.00	0.00	0.00	0.00	0.00	0.00	0.00	0.00
5,700.00	0.00	0.00	5,700.00	0.00	0.00	0.00	0.00	0.00	0.00	0.00
5,800.00	0.00	0.00	5,800.00	0.00	0.00	0.00	0.00	0.00	0.00	0.00
5,900.00	0.00	0.00	5,900.00	0.00	0.00	0.00	0.00	0.00	0.00	0.00
6,000.00	0.00	0.00	6,000.00	0.00	0.00	0.00	0.00	0.00	0.00	0.00
6,100.00	0.00	0.00	6,100.00	0.00	0.00	0.00	0.00	0.00	0.00	0.00
6,200.00	0.00	0.00	6,200.00	0.00	0.00	0.00	0.00	0.00	0.00	0.00
6,300.00	0.00	0.00	6,300.00	0.00	0.00	0.00	0.00	0.00	0.00	0.00
6,400.00	0.00	0.00	6,400.00	0.00	0.00	0.00	0.00	0.00	0.00	0.00
6,500.00	0.00	0.00	6,500.00	0.00	0.00	0.00	0.00	0.00	0.00	0.00
6,600.00	0.00	0.00	6,600.00	0.00	0.00	0.00	0.00	0.00	0.00	0.00
6,700.00	0.00	0.00	6,700.00	0.00	0.00	0.00	0.00	0.00	0.00	0.00
6,800.00	0.00	0.00	6,800.00	0.00	0.00	0.00	0.00	0.00	0.00	0.00
6,900.00	0.00	0.00	6,900.00	0.00	0.00	0.00	0.00	0.00	0.00	0.00
7,000.00	0.00	0.00	7,000.00	0.00	0.00	0.00	0.00	0.00	0.00	0.00
7,100.00	0.00	0.00	7,100.00	0.00	0.00	0.00	0.00	0.00	0.00	0.00
7,200.00	0.00	0.00	7,200.00	0.00	0.00	0.00	0.00	0.00	0.00	0.00
7,202.09	0.00	0.00	7,202.09	0.00	0.00	0.00	0.00	0.00	0.00	0.00
Kick Off Point @ 7202.09 ft										
7,300.00	9.79	90.68	7,299.52	-0.10	8.34	8.35	10.00	10.00	0.00	90.68
7,400.00	19.79	90.68	7,396.09	-0.40	33.84	33.84	10.00	10.00	0.00	0.00
7,500.00	29.79	90.68	7,486.76	-0.90	75.71	75.72	10.00	10.00	0.00	0.00
7,597.69	39.56	90.68	7,567.00	-1.55	131.22	131.23	10.00	10.00	0.00	0.00
Sharon Springs										
7,600.00	39.79	90.68	7,568.78	-1.57	132.70	132.71	10.00	10.00	0.00	0.00
Build Rate 10.00 °/100 ft										
7,700.00	49.79	90.68	7,639.65	-2.40	203.05	203.07	10.00	10.00	0.00	0.00
7,767.32	56.52	90.68	7,680.00	-3.04	256.90	256.92	10.00	10.00	0.00	0.00
Niobrara										
7,800.00	59.79	90.68	7,697.24	-3.36	284.65	284.67	10.00	10.00	0.00	0.00
7,900.00	69.79	90.68	7,739.78	-4.43	375.01	375.03	10.00	10.00	0.00	0.00
7,915.71	71.36	90.68	7,745.00	-4.61	389.82	389.85	10.00	10.00	0.00	0.00
Niobrara B										
8,000.00	79.79	90.68	7,765.98	-5.57	471.37	471.41	10.00	10.00	0.00	0.00
8,100.00	89.79	90.68	7,775.04	-6.75	570.83	570.87	10.00	10.00	0.00	0.00
8,109.11	90.70	90.68	7,775.00	-6.86	579.94	579.98	10.00	10.00	0.00	0.00
End Build @ 8109.11 ft										
8,200.00	90.70	90.68	7,773.89	-7.93	670.81	670.86	0.00	0.00	0.00	180.00
8,300.00	90.70	90.68	7,772.66	-9.11	770.80	770.85	0.00	0.00	0.00	0.00
8,400.00	90.70	90.68	7,771.44	-10.29	870.78	870.85	0.00	0.00	0.00	0.00
8,500.00	90.70	90.68	7,770.21	-11.48	970.77	970.84	0.00	0.00	0.00	0.00
8,600.00	90.70	90.68	7,768.99	-12.66	1,070.76	1,070.83	0.00	0.00	0.00	0.00
8,700.00	90.70	90.68	7,767.76	-13.84	1,170.74	1,170.82	0.00	0.00	0.00	0.00
8,800.00	90.70	90.68	7,766.54	-15.02	1,270.73	1,270.82	0.00	0.00	0.00	0.00
8,900.00	90.70	90.68	7,765.31	-16.20	1,370.71	1,370.81	0.00	0.00	0.00	0.00
9,000.00	90.70	90.68	7,764.08	-17.38	1,470.70	1,470.80	0.00	0.00	0.00	0.00
9,100.00	90.70	90.68	7,762.86	-18.57	1,570.68	1,570.79	0.00	0.00	0.00	0.00
9,200.00	90.70	90.68	7,761.63	-19.75	1,670.67	1,670.79	0.00	0.00	0.00	0.00
9,300.00	90.70	90.68	7,760.41	-20.93	1,770.65	1,770.78	0.00	0.00	0.00	0.00
9,400.00	90.70	90.68	7,759.18	-22.11	1,870.64	1,870.77	0.00	0.00	0.00	0.00
9,500.00	90.70	90.68	7,757.96	-23.29	1,970.63	1,970.76	0.00	0.00	0.00	0.00
9,600.00	90.70	90.68	7,756.73	-24.48	2,070.61	2,070.76	0.00	0.00	0.00	0.00
9,700.00	90.70	90.68	7,755.50	-25.66	2,170.60	2,170.75	0.00	0.00	0.00	0.00
9,800.00	90.70	90.68	7,754.28	-26.84	2,270.58	2,270.74	0.00	0.00	0.00	0.00
9,900.00	90.70	90.68	7,753.05	-28.02	2,370.57	2,370.73	0.00	0.00	0.00	0.00

Plan Report for Prosper Farms 4-65 11-12 1H - Rev B0

Measured Depth (usft)	Inclination (°)	Azimuth (°)	Vertical Depth (usft)	+N/-S (usft)	+E/-W (usft)	Vertical Section (usft)	Dogleg Rate (°/100usft)	Build Rate (°/100usft)	Turn Rate (°/100usft)	Toolface Azimuth (°)
10,000.00	90.70	90.68	7,751.83	-29.20	2,470.55	2,470.73	0.00	0.00	0.00	0.00
10,100.00	90.70	90.68	7,750.60	-30.39	2,570.54	2,570.72	0.00	0.00	0.00	0.00
10,200.00	90.70	90.68	7,749.37	-31.57	2,670.52	2,670.71	0.00	0.00	0.00	0.00
10,300.00	90.70	90.68	7,748.15	-32.75	2,770.51	2,770.70	0.00	0.00	0.00	0.00
10,400.00	90.70	90.68	7,746.92	-33.93	2,870.49	2,870.70	0.00	0.00	0.00	0.00
10,500.00	90.70	90.68	7,745.70	-35.11	2,970.48	2,970.69	0.00	0.00	0.00	0.00
10,600.00	90.70	90.68	7,744.47	-36.30	3,070.47	3,070.68	0.00	0.00	0.00	0.00
10,700.00	90.70	90.68	7,743.25	-37.48	3,170.45	3,170.67	0.00	0.00	0.00	0.00
10,800.00	90.70	90.68	7,742.02	-38.66	3,270.44	3,270.67	0.00	0.00	0.00	0.00
10,900.00	90.70	90.68	7,740.79	-39.84	3,370.42	3,370.66	0.00	0.00	0.00	0.00
11,000.00	90.70	90.68	7,739.57	-41.02	3,470.41	3,470.65	0.00	0.00	0.00	0.00
11,100.00	90.70	90.68	7,738.34	-42.21	3,570.39	3,570.64	0.00	0.00	0.00	0.00
11,200.00	90.70	90.68	7,737.12	-43.39	3,670.38	3,670.64	0.00	0.00	0.00	0.00
11,300.00	90.70	90.68	7,735.89	-44.57	3,770.36	3,770.63	0.00	0.00	0.00	0.00
11,400.00	90.70	90.68	7,734.66	-45.75	3,870.35	3,870.62	0.00	0.00	0.00	0.00
11,500.00	90.70	90.68	7,733.44	-46.93	3,970.34	3,970.61	0.00	0.00	0.00	0.00
11,600.00	90.70	90.68	7,732.21	-48.11	4,070.32	4,070.61	0.00	0.00	0.00	0.00
11,700.00	90.70	90.68	7,730.99	-49.30	4,170.31	4,170.60	0.00	0.00	0.00	0.00
11,800.00	90.70	90.68	7,729.76	-50.48	4,270.29	4,270.59	0.00	0.00	0.00	0.00
11,900.00	90.70	90.68	7,728.54	-51.66	4,370.28	4,370.58	0.00	0.00	0.00	0.00
12,000.00	90.70	90.68	7,727.31	-52.84	4,470.26	4,470.58	0.00	0.00	0.00	0.00
12,100.00	90.70	90.68	7,726.08	-54.02	4,570.25	4,570.57	0.00	0.00	0.00	0.00
12,200.00	90.70	90.68	7,724.86	-55.21	4,670.23	4,670.56	0.00	0.00	0.00	0.00
12,300.00	90.70	90.68	7,723.63	-56.39	4,770.22	4,770.55	0.00	0.00	0.00	0.00
12,400.00	90.70	90.68	7,722.41	-57.57	4,870.20	4,870.55	0.00	0.00	0.00	0.00
12,500.00	90.70	90.68	7,721.18	-58.75	4,970.19	4,970.54	0.00	0.00	0.00	0.00
12,600.00	90.70	90.68	7,719.96	-59.93	5,070.18	5,070.53	0.00	0.00	0.00	0.00
12,700.00	90.70	90.68	7,718.73	-61.12	5,170.16	5,170.52	0.00	0.00	0.00	0.00
12,800.00	90.70	90.68	7,717.50	-62.30	5,270.15	5,270.52	0.00	0.00	0.00	0.00
12,900.00	90.70	90.68	7,716.28	-63.48	5,370.13	5,370.51	0.00	0.00	0.00	0.00
13,000.00	90.70	90.68	7,715.05	-64.66	5,470.12	5,470.50	0.00	0.00	0.00	0.00
13,100.00	90.70	90.68	7,713.83	-65.84	5,570.10	5,570.49	0.00	0.00	0.00	0.00
13,200.00	90.70	90.68	7,712.60	-67.03	5,670.09	5,670.49	0.00	0.00	0.00	0.00
13,300.00	90.70	90.68	7,711.37	-68.21	5,770.07	5,770.48	0.00	0.00	0.00	0.00
13,400.00	90.70	90.68	7,710.15	-69.39	5,870.06	5,870.47	0.00	0.00	0.00	0.00
13,500.00	90.70	90.68	7,708.92	-70.57	5,970.05	5,970.46	0.00	0.00	0.00	0.00
13,600.00	90.70	90.68	7,707.70	-71.75	6,070.03	6,070.46	0.00	0.00	0.00	0.00
13,700.00	90.70	90.68	7,706.47	-72.93	6,170.02	6,170.45	0.00	0.00	0.00	0.00
13,800.00	90.70	90.68	7,705.25	-74.12	6,270.00	6,270.44	0.00	0.00	0.00	0.00
13,900.00	90.70	90.68	7,704.02	-75.30	6,369.99	6,370.43	0.00	0.00	0.00	0.00
14,000.00	90.70	90.68	7,702.79	-76.48	6,469.97	6,470.43	0.00	0.00	0.00	0.00
14,100.00	90.70	90.68	7,701.57	-77.66	6,569.96	6,570.42	0.00	0.00	0.00	0.00
14,200.00	90.70	90.68	7,700.34	-78.84	6,669.94	6,670.41	0.00	0.00	0.00	0.00
14,300.00	90.70	90.68	7,699.12	-80.03	6,769.93	6,770.40	0.00	0.00	0.00	0.00
14,400.00	90.70	90.68	7,697.89	-81.21	6,869.92	6,870.39	0.00	0.00	0.00	0.00
14,500.00	90.70	90.68	7,696.66	-82.39	6,969.90	6,970.39	0.00	0.00	0.00	0.00
14,600.00	90.70	90.68	7,695.44	-83.57	7,069.89	7,070.38	0.00	0.00	0.00	0.00
14,635.80	90.70	90.68	7,695.00	-84.00	7,105.68	7,106.18	0.00	0.00	0.00	0.00
Total Depth 14635.80 ft										

Plan Report for Prosper Farms 4-65 11-12 1H - Rev B0

Plan Annotations

Measured Depth (usft)	Vertical Depth (usft)	Local Coordinates		Comment
		+N/-S (usft)	+E/-W (usft)	
7,202.09	7,202.09	0.00	0.00	Kick Off Point @ 7202.09 ft
7,600.00	7,568.78	-1.57	132.70	Build Rate 10.00 °/100 ft
8,109.11	7,775.00	-6.86	579.94	End Build @ 8109.11 ft
14,635.80	7,695.00	-84.00	7,105.68	Total Depth 14635.80 ft

Vertical Section Information

Angle Type	Target	Azimuth (°)	Origin Type	Origin +N/-S (usft)	Origin +E/-W (usft)	Start TVD (usft)
Target	Prosper Farms 4-65 11-12 1H_Rev B0_BHL Tgt	90.68	Slot	0.00	0.00	0.00

Survey tool program

From (usft)	To (usft)	Survey/Plan	Survey Tool
0.00	2,178.00	Rev B0	Assumed Vertical - 30 Inclinometer
2,178.00	14,635.80	Rev B0	MWD

Casing Details

Measured Depth (usft)	Vertical Depth (usft)	Name	Casing Diameter (")	Hole Diameter (")
2,178.00	2,178.00	9 5/8" Casing Pt.	9-5/8	13-1/2

Formation Details

Measured Depth (usft)	Vertical Depth (usft)	Name	Lithology	Dip (°)	Dip Direction (°)
1,748.00	1,748.00	Fox Hills			
1,978.00	1,978.00	Pierre Shale			
2,178.00	2,178.00	Surface Casing			
7,597.69	7,567.00	Sharon Springs			
7,767.32	7,680.00	Niobrara			
7,915.71	7,745.00	Niobrara B			

Targets associated with this wellbore

Target Name	TVD (usft)	+N/-S (usft)	+E/-W (usft)	Shape
Prosper Farms 4-65 11-12 1H_SL	0.20	0.00	0.00	Polygon
Prosper Farms 4-65 11-12 1H_SB	0.20	0.00	0.00	Polygon
Prosper Farms 4-65 11-12 1H_Rev B0_BHL Tg	7,695.00	-84.00	7,105.68	Point

Plan Report for Prosper Farms 4-65 11-12 1H - Rev B0

Directional Difficulty Index

Average Dogleg over Survey:	0.62 °/100usft	Maximum Dogleg over Survey:	10.00 °/100usft at 8,109.11 usft
Net Tortousity applicable to Plans:	0.62 °/100usft	Directional Difficulty Index:	6.329

Audit Info

**North Reference Sheet for Sec. 11-T4S-R65W - Prosper Farms 4-65 11-12 1H - Plan
B**

All data is in US Feet unless otherwise stated. Directions and Coordinates are relative to True North Reference .
Vertical Depths are relative to KB 24 ft @ 5678.20usft (H & P 280). Northing and Easting are relative to Prosper Farms 4-65 11-12 1H
Coordinate System is US State Plane 1983, Colorado Central Zone using datum North American Datum 1983, ellipsoid GRS 1980
Projection method is Lambert Conformal Conic (2 parallel)
Central Meridian is -105.50°, Longitude Origin:0° 0' 0.000 E°, Latitude Origin:39° 45' 0.000 N°
False Easting: 3,000,000.00usft, False Northing: 1,000,000.00usft, Scale Reduction: 0.99999492

Grid Coordinates of Well: 1,689,671.94 usft N, 3,242,040.78 usft E
Geographical Coordinates of Well: 39° 43' 25.70" N, 104° 38' 22.24" W
Grid Convergence at Surface is: 0.54°

Based upon Minimum Curvature type calculations, at a Measured Depth of 14,635.80usft
the Bottom Hole Displacement is 7,106.18usft in the Direction of 90.68° (True).
Magnetic Convergence at surface is: -7.86° (30 April 2014, , BGGM2013)

