

WELL LOCATION PLAT  
T4S, R65W, 6th P.M.

ConocoPhillips Company

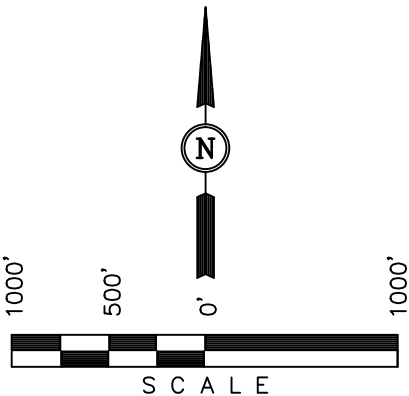
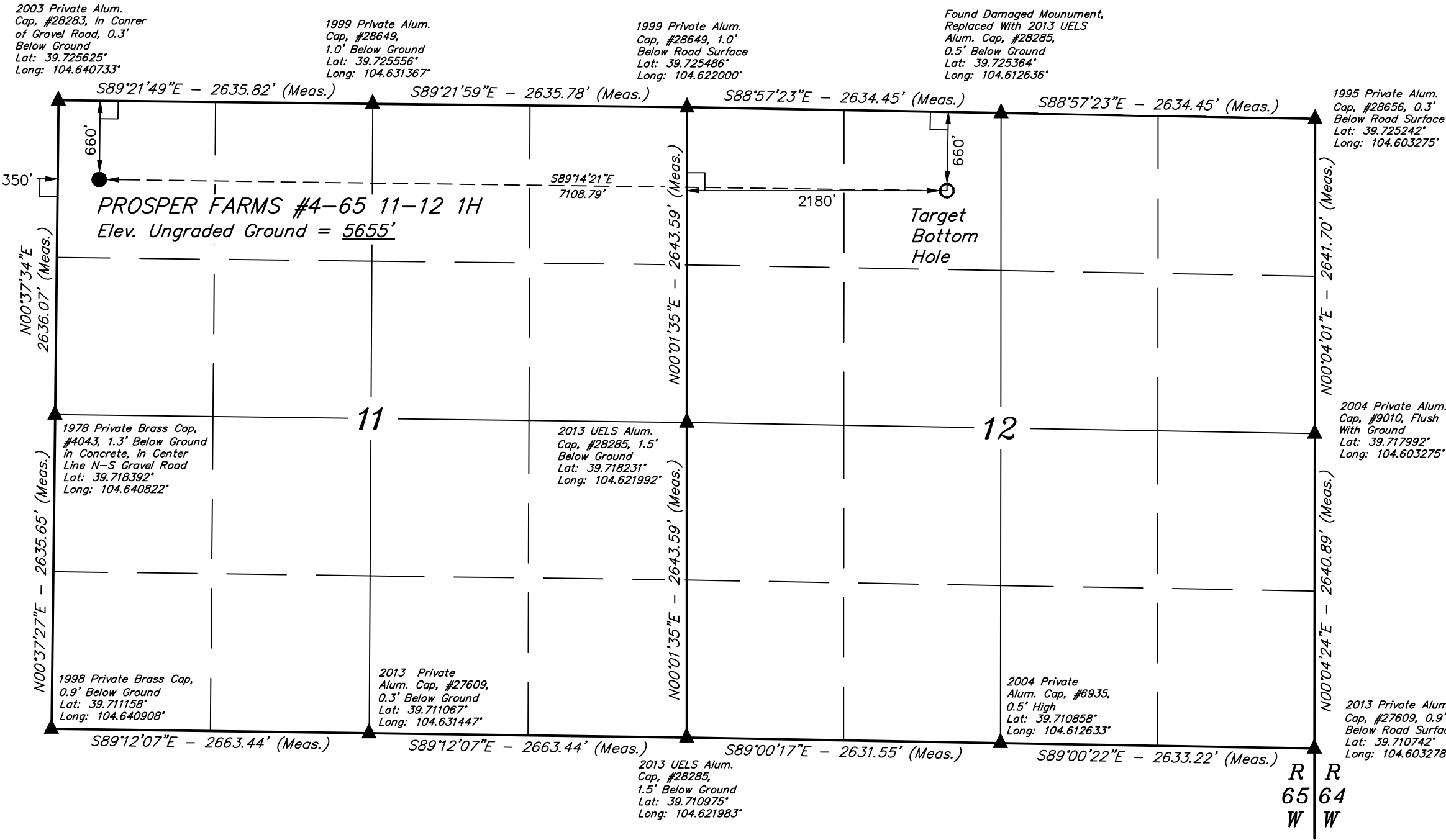
Well location, PROSPER FARMS #4-65 11-12 1H,  
located as shown in the NW 1/4 NW 1/4 of  
Section 11, T4S, R65W, 6th P.M., Arapahoe  
County, Colorado.

BASIS OF ELEVATION

BENCHMARK 374 LOCATED ON THE SECTION LINE BETWEEN  
SECTIONS 12 & 13, T5S, R64W, 6th. P.M., TAKEN FROM 1988  
PUBLISHED DATUM BY THE UNITED STATES DEPARTMENT OF  
THE INTERIOR, GEOLOGICAL SURVEY AS BEING 6054.61 FEET.

BASIS OF BEARINGS

BASIS OF BEARINGS IS A G.P.S. OBSERVATION.



CERTIFICATE  
THIS IS TO CERTIFY THAT THE ABOVE PLAT WAS PREPARED FROM  
FIELD NOTES OF ACTUAL SURVEYS MADE BY ME OR UNDER MY  
SUPERVISION AND THAT THE SAME ARE TRUE AND CORRECT TO THE  
BEST OF MY KNOWLEDGE AND BELIEF.  
[Signature]  
REGISTERED LAND SURVEYOR  
REGISTRATION NO. 28285  
STATE OF COLORADO  
08-19-13

- LEGEND:
- └─┘ = 90° SYMBOL
  - = PROPOSED WELL HEAD.
  - ▲ = SECTION CORNERS LOCATED.
  - = PROPOSED TARGET BOTTOM HOLE.

PDOP = 2.0

NAD 83 (TARGET BOTTOM HOLE)	NAD 83 (SURFACE LOCATION)
LATITUDE = 39°43'24.86" (39.723572)	LATITUDE = 39°43'25.70" (39.723806)
LONGITUDE = 104°36'51.30" (104.614250)	LONGITUDE = 104°38'22.24" (104.639511)
NAD 27 (TARGET BOTTOM HOLE)	NAD 27 (SURFACE LOCATION)
LATITUDE = 39°43'24.91" (39.723586)	LATITUDE = 39°43'25.75" (39.723819)
LONGITUDE = 104°36'49.41" (104.613725)	LONGITUDE = 104°38'20.36" (104.638989)

REVISED: 10-29-13 J.W.

UINTAH ENGINEERING & LAND SURVEYING  
85 SOUTH 200 EAST - VERNAL, UTAH 84078  
(435) 789-1017

SCALE 1" = 1000'	DATE SURVEYED: 08-19-13	DATE DRAWN: 08-21-13
PARTY D.S. K.H. B.D.H.	REFERENCES G.L.O. PLAT	
WEATHER HOT	FILE ConocoPhillips Company	

SECTION BREAKDOWN  
T4S, R65W, 6th P.M.

ConocoPhillips Company

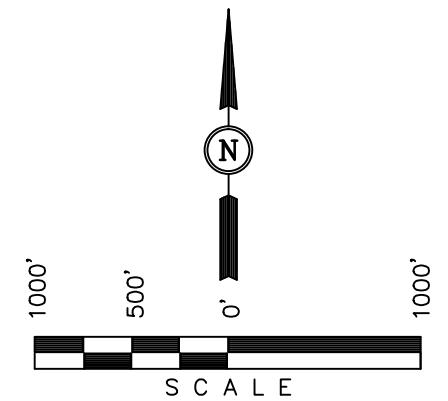
Well location, PROSPER FARMS #4-65 11-12 1H,  
located as shown in the NW 1/4 NW 1/4 of  
Section 11, T4S, R65W, 6th P.M., Arapahoe  
County, Colorado.

## BASIS OF ELEVATION

BENCHMARK 374 LOCATED ON THE SECTION LINE BETWEEN  
SECTIONS 12 & 13, T5S, R64W, 6th. P.M., TAKEN FROM 1988  
PUBLISHED DATUM BY THE UNITED STATES DEPARTMENT OF  
THE INTERIOR, GEOLOGICAL SURVEY AS BEING 6054.61 FEET.

## BASIS OF BEARINGS

BASIS OF BEARINGS IS A G.P.S. OBSERVATION.



CERTIFICATE

AT THE ABOVE PLAT WAS PREPARED FROM  
AL SURVEYS MADE BY ME OR UNDER MY  
T THE SAME ARE TRUE AND CORRECT TO THE  
SE AND BELIEF.

*[Signature]* 28285

REGISTERED LAND SURVEYOR  
REGISTRATION NO. 28285  
STATE OF COLORADO

19-29-13

REVISÉD: 10-29-13 J.W.

UTAH ENGINEERING & LAND SURVEYING  
 85 SOUTH 200 EAST - VERNAL, UTAH 84078  
 (435) 789-1017

0	SCALE 1" = 1000'	DATE SURVEYED: 08-19-13	DATE DRAWN: 08-21-13
0) 1)	PARTY D.S. K.H. B.D.H.	REFERENCES G.L.O. PLAT	
0) (9)	WEATHER HOT	FILE ConocoPhillips Company	

2003 Private Alum.  
Cap, #28283, In Conrer  
of Gravel Road, 0.3'  
Below Ground  
Lat: 39.725625°  
Long: 104.640733°

1999 Private Alum.  
Cap, #28649,  
1.0' Below Ground  
Lat: 39.725556°  
Long: 104.631367°

1999 Private Alum.  
Cap, #28649, 1.0'  
Below Road Surface  
Lat: 39.725486°  
Long: 104.622000°

Found Damaged Mounument,  
Replaced With 2013 UELS  
Alum. Cap, #28285,  
0.5' Below Ground  
Lat: 39.725364°  
Long: 104.612636°

1995 Private Alum.  
Cap, #28656, 0.3'  
Below Road Surface  
Lat: 39.725242°  
Long: 104.603275°





2004 Private Alum.  
Cap, #9010, Flush  
With Ground  
Lat: 39.717992°  
Long: 104.603275°

2013 Private Alum.  
Cap, #27609, 0.9'  
Below Road Surface  
Lat: 39.710742°  
Long: 104.603278°

1998 Private Brass Cap,  
0.9' Below Ground  
Lat: 39.711158°  
Long: 104.640908°

2013 UELS Alum.  
Cap, #28285,  
1.5' Below Ground  
Lat: 39.710975°  
Long: 104.621983°

LEGEND:

 = 90° SYMBOL  
 = PROPOSED WELL HEAD.  
 = SECTION CORNERS LOCATED.  
 = PROPOSED TARGET BOTTOM HOLE.

PDOP = 2.0

<b>NAD 83 (TARGET BOTTOM HOLE)</b>	<b>NAD 83 (SURFACE LOCATION)</b>
LATITUDE = 39°43'24.86" (39.723572)	LATITUDE = 39°43'25.70" (39.723806)
LONGITUDE = 104°36'51.30" (104.614250)	LONGITUDE = 104°38'22.24" (104.639511)
<b>NAD 27 (TARGET BOTTOM HOLE)</b>	<b>NAD 27 (SURFACE LOCATION)</b>
LATITUDE = 39°43'24.91" (39.723586)	LATITUDE = 39°43'25.75" (39.723819)
LONGITUDE = 104°36'49.41" (104.613725)	LONGITUDE = 104°38'20.36" (104.638989)