



Pioneer Energy Services

RADIAL SECTOR BOND LOG WITH GAMMA RAY

<<< Fold Here >>>

All interpretations are opinions based on inferences from electrical or other measurements and Pioneer Wireline Services, LLC cannot and does not guarantee the accuracy or correctness of any interpretation, and Pioneer Wireline Services, LLC will not be liable or responsible for any loss, costs, damages, or expenses incurred or sustained by anyone resulting from any interpretation made by any of our officers, agents or employees.

N/A DENOTES NOT AVAILABLE OR NON-APPLICABLE.
2-204566

CORRECTED TO LINER TOP

WCR 31 & WCR 20 WEST 200', SOUTH INTO

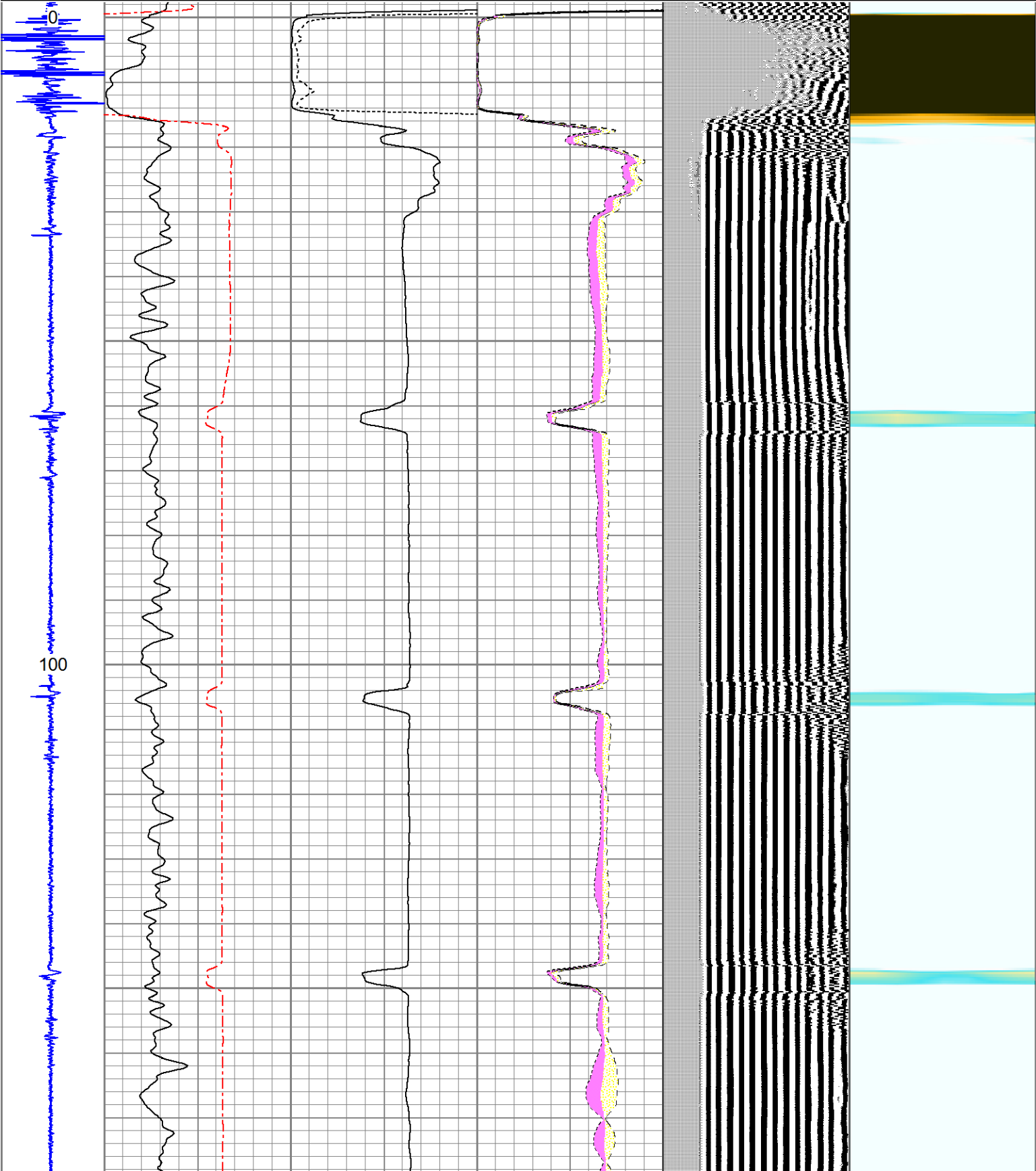
THANK YOU FOR USING PIONEER ENERGY SERVICES

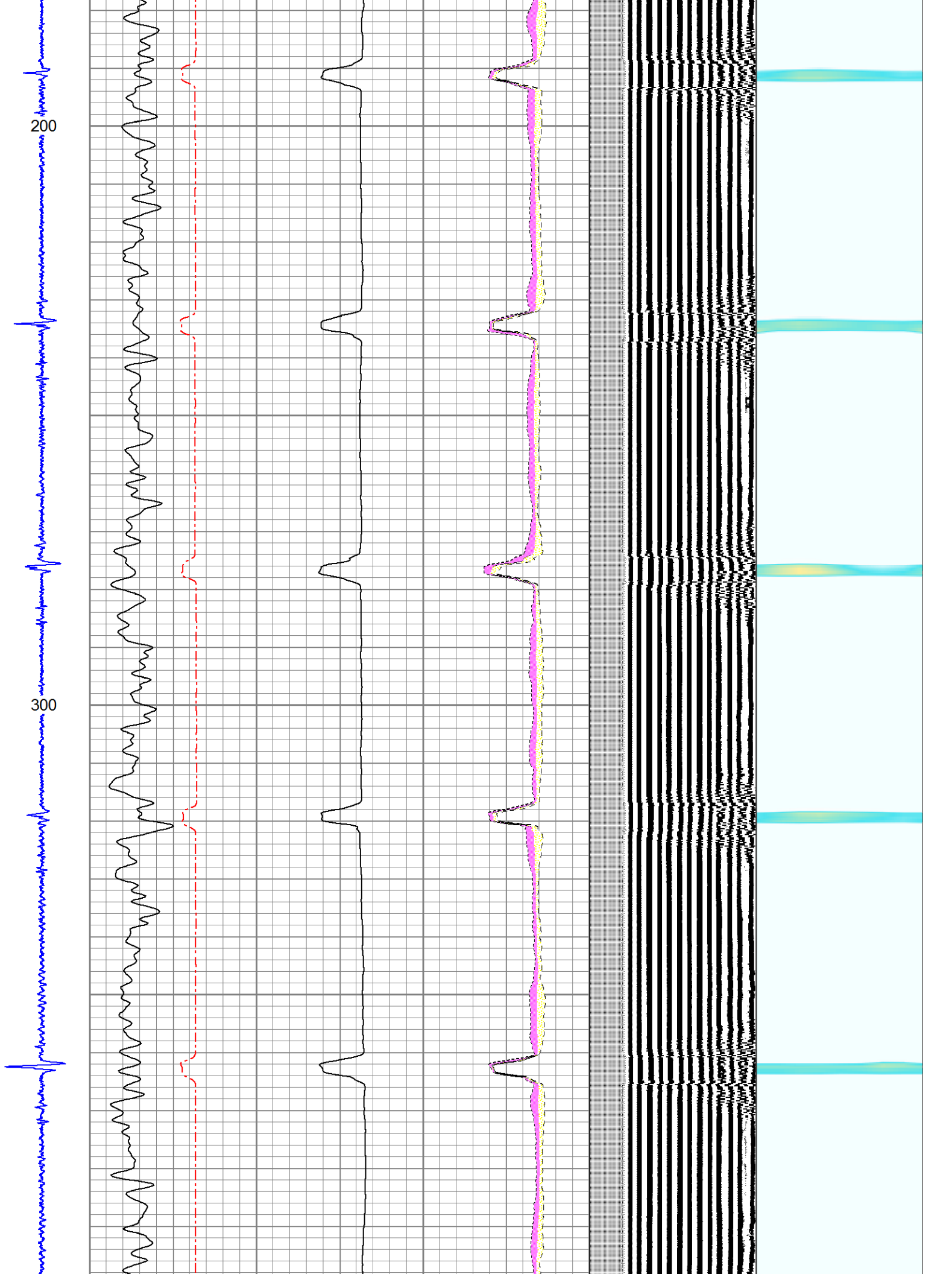
Tool Data - Services	Serial Number
Your Pioneer ENERGY Services Crew Engineer: N. BIVENS Operator: J. HOLLIS Operator: D. BAESSLER Operator: W. BRIGANTE	

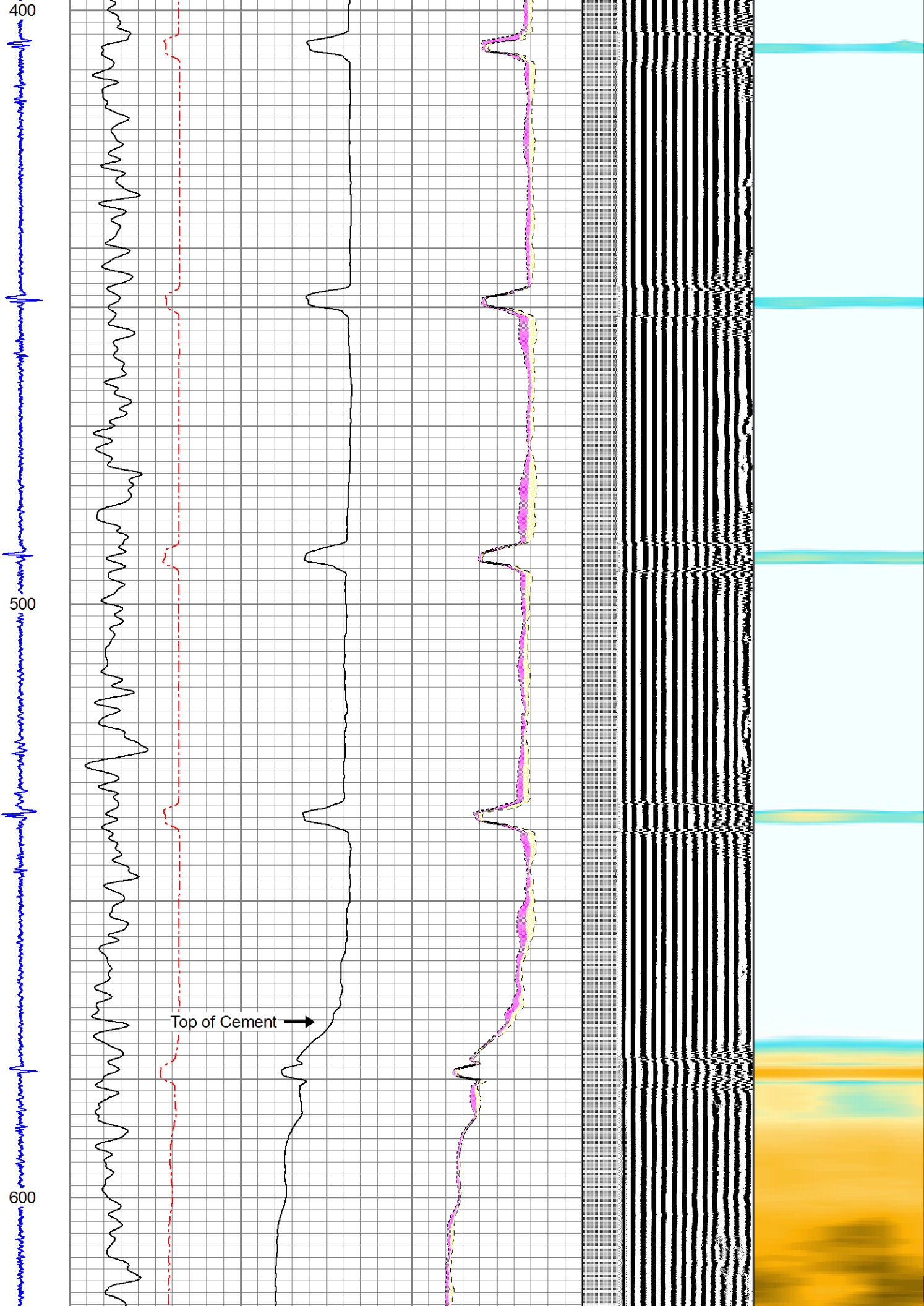
Component	Offset (ft)	Schematic	Description	Len. (ft)	OD (in)	Wt. (lb)
-----------	-------------	-----------	-------------	-----------	---------	----------

Database File: 05123380990000_3d_19n_21hz.db
Dataset Pathname: pass4
Presentation Format: scbl02
Dataset Creation: Sun Feb 16 10:48:03 2014 by Log 7.0 B1
Charted by: Depth in Feet scaled 1:240

-1	CCL	1	0	GR (GAPI)	200	0	AMP (mV)	100	0	AMPAVG	150	200	VDL	1200	1	SECTOR MAP	8
				TT3FT		0	AMPx5 (mV)	20	0	AMPMAX	150				25		85
				362 (usec)	262				0	AMPMIN	150						



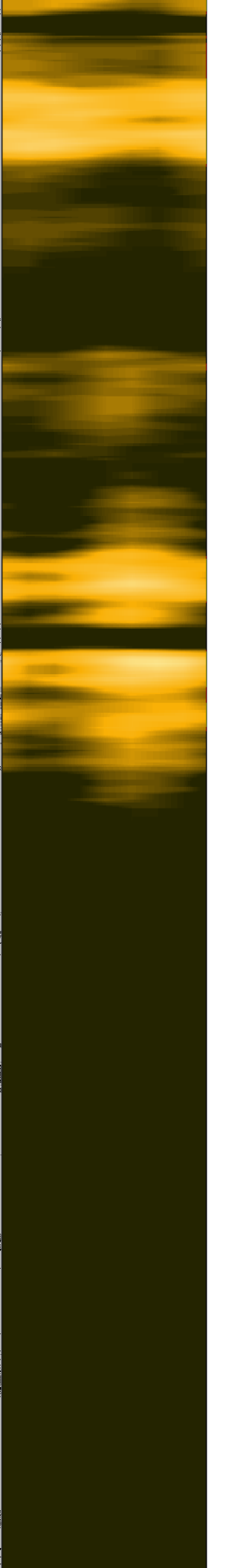
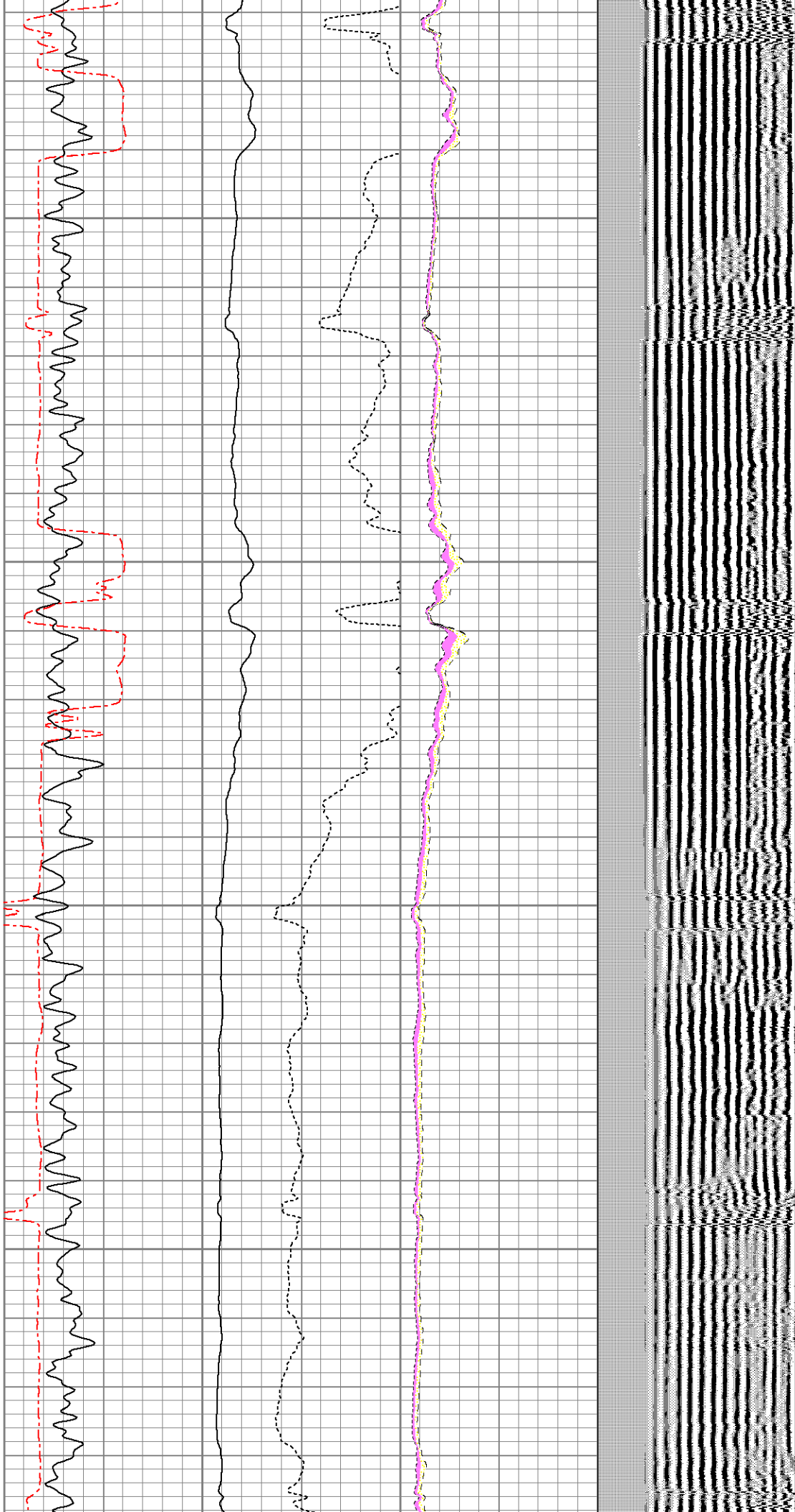


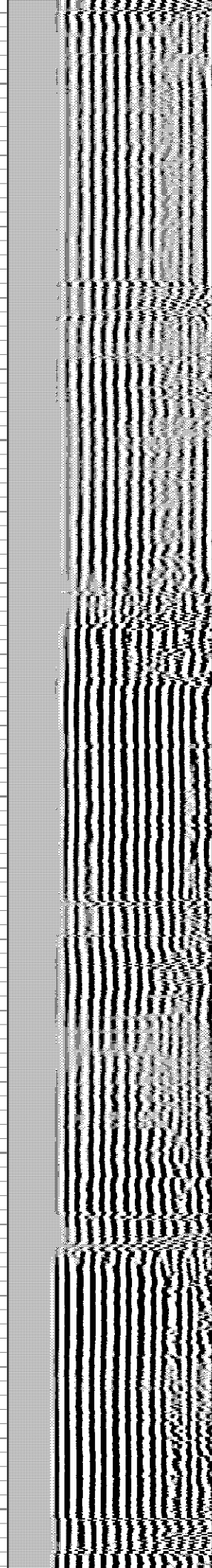
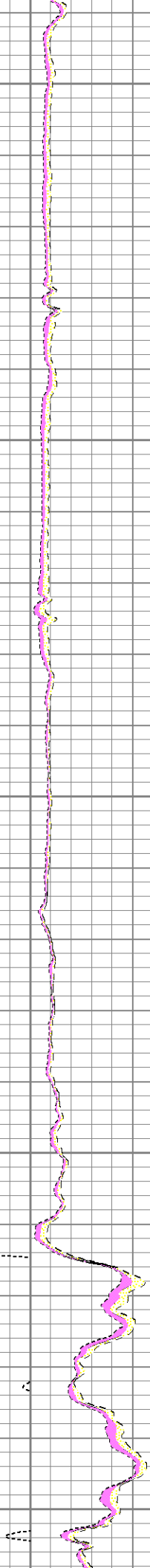
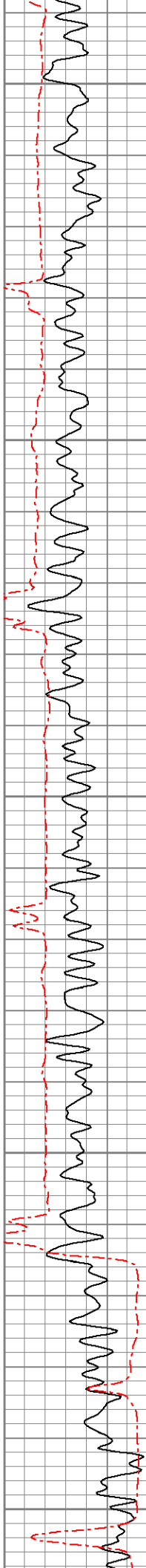




700

800

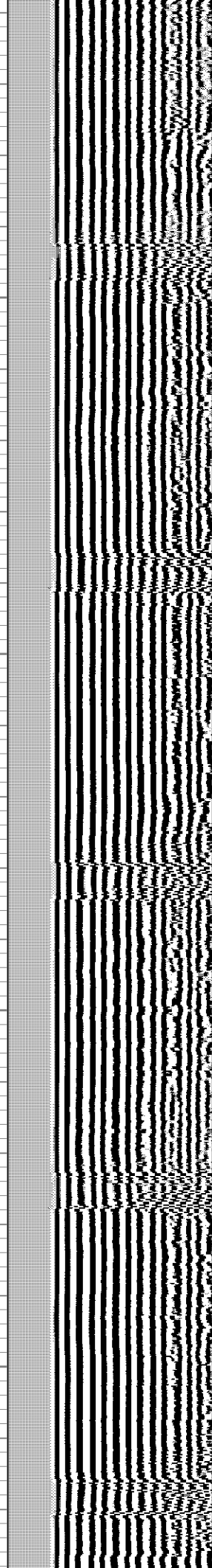
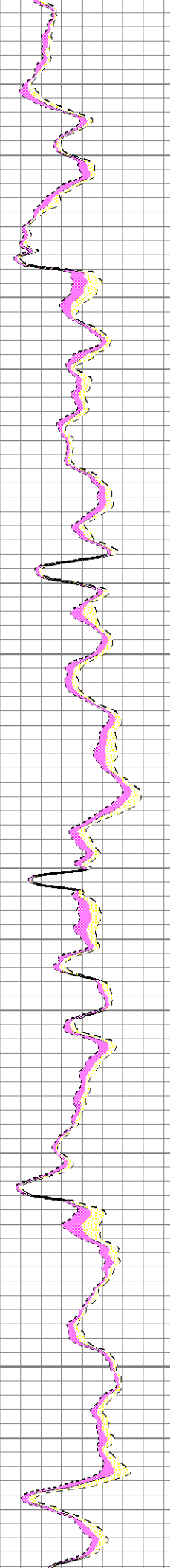
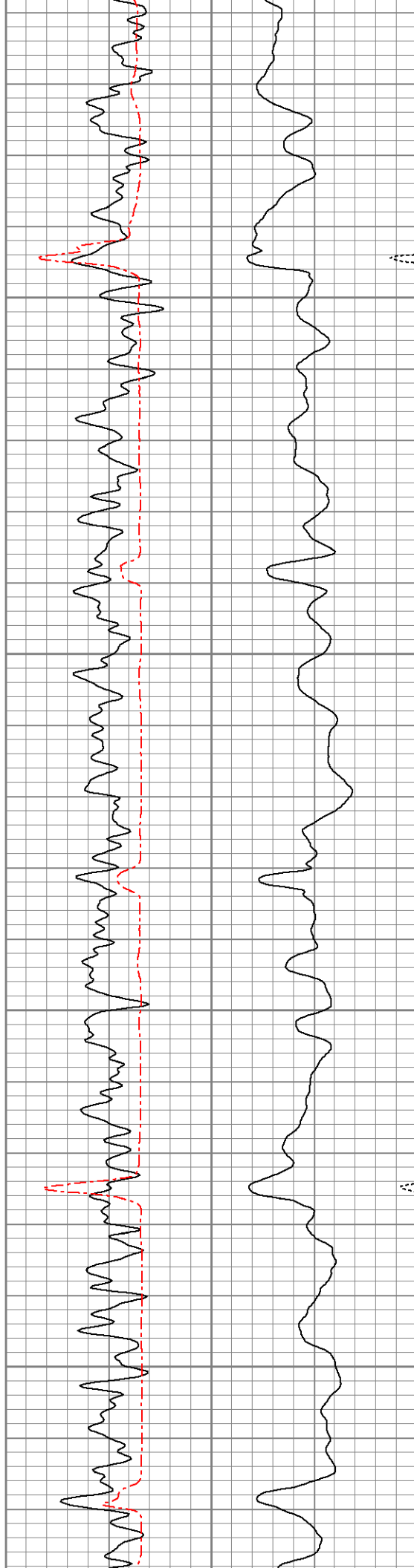


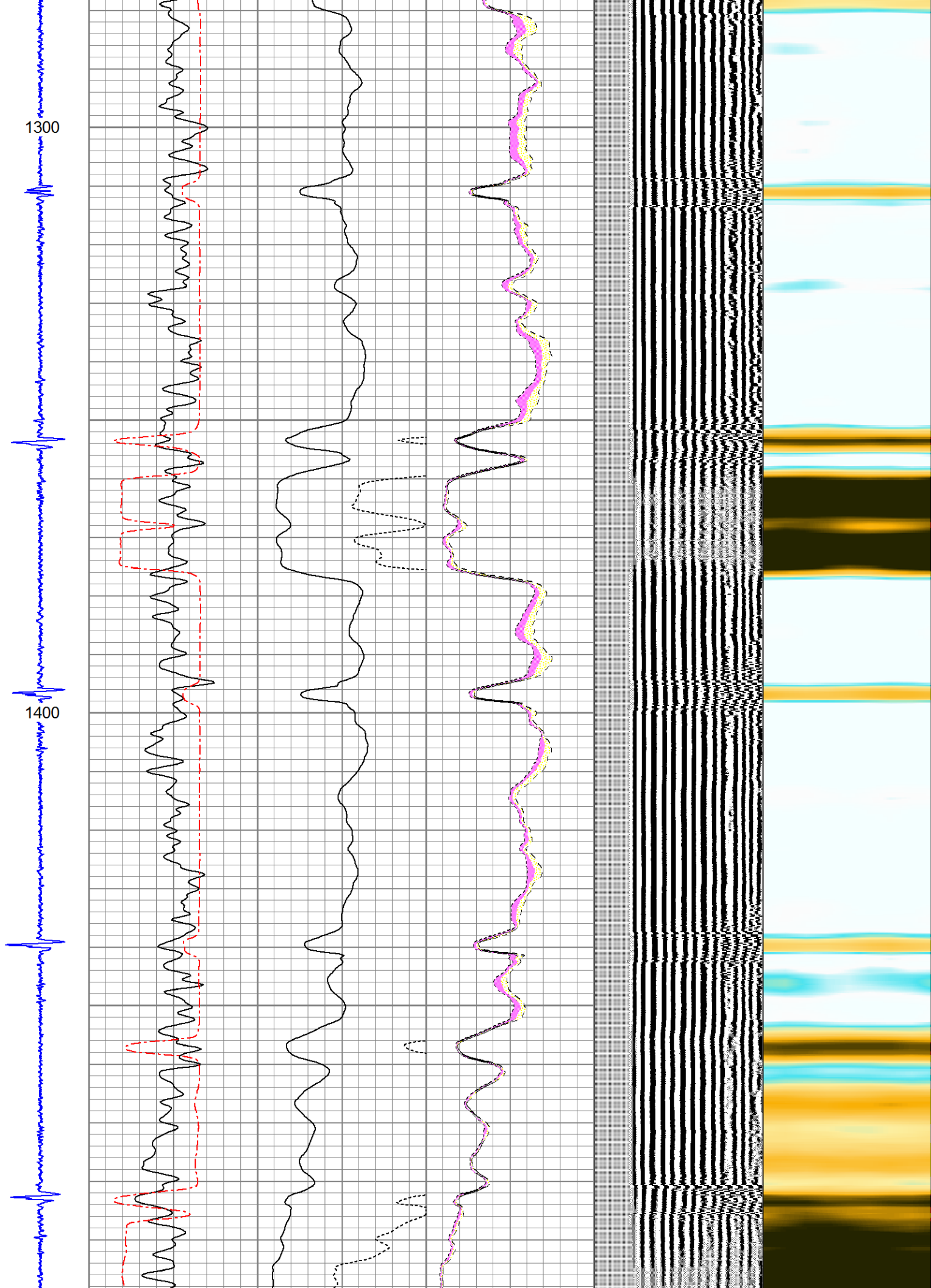


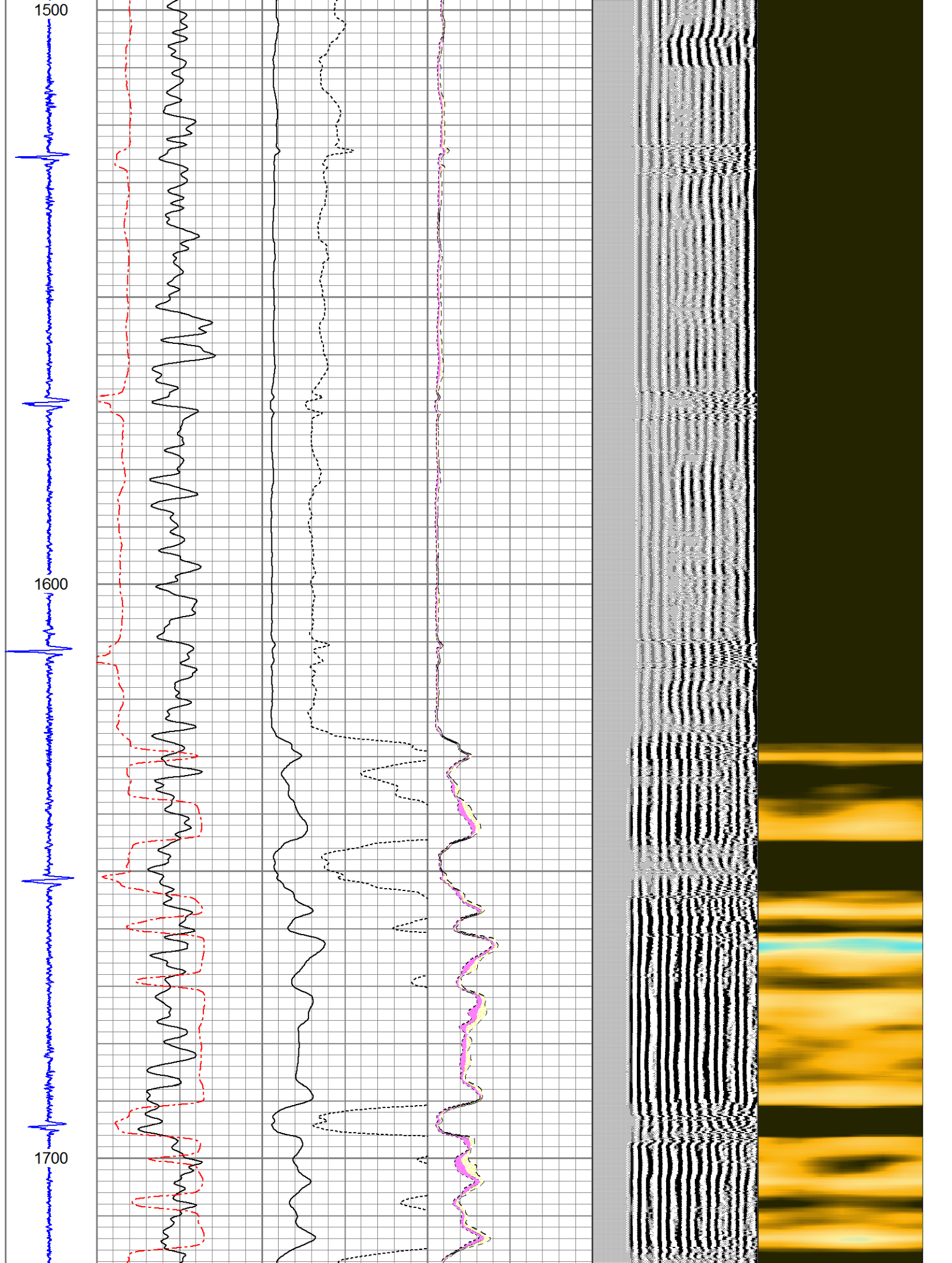


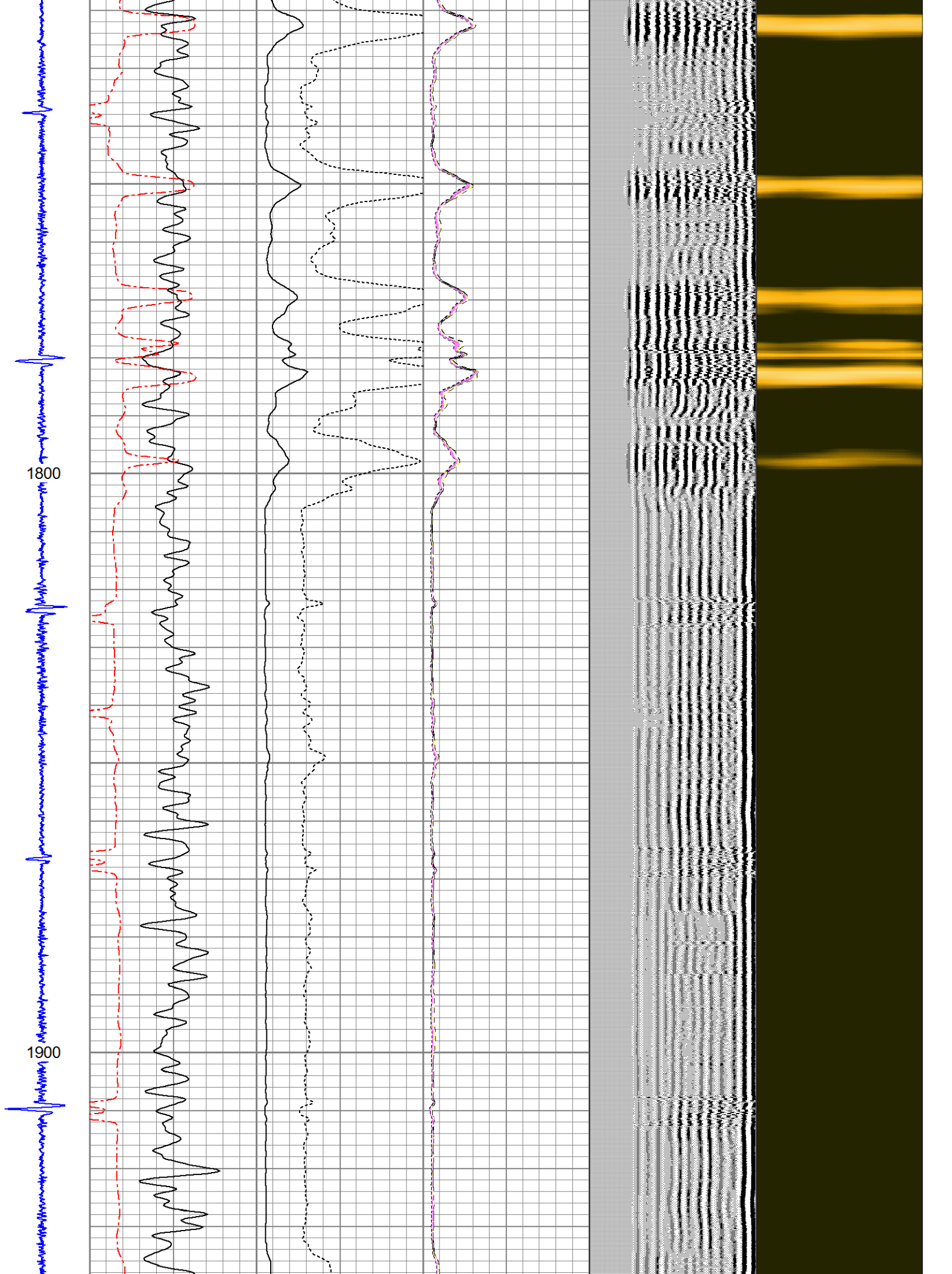
1100

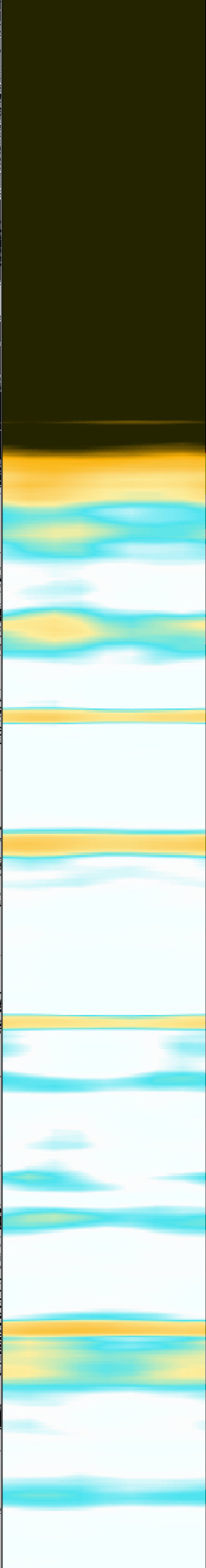
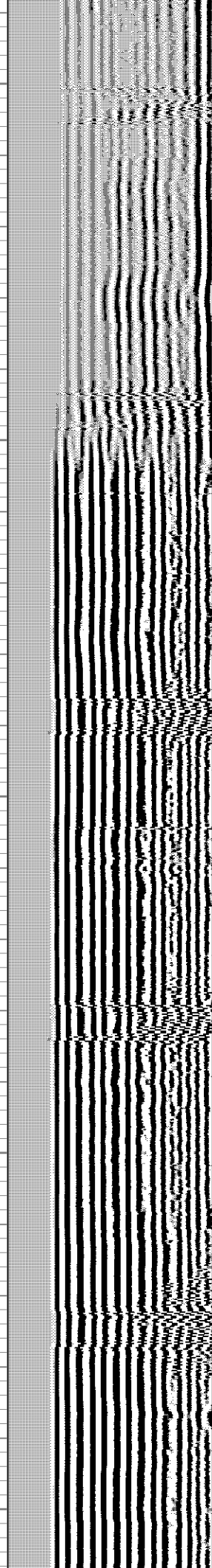
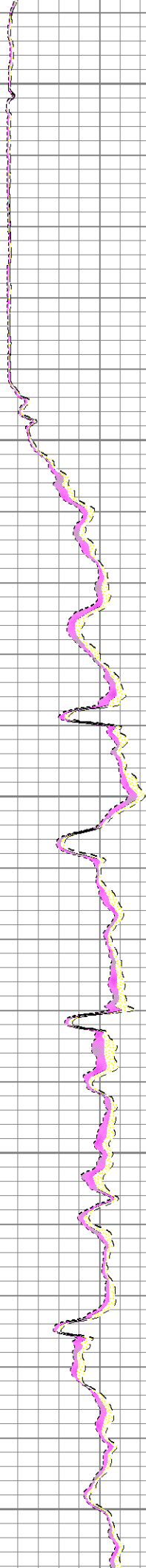
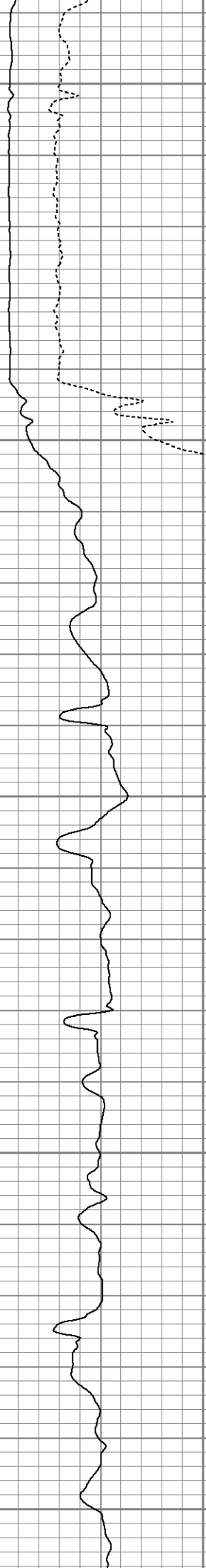
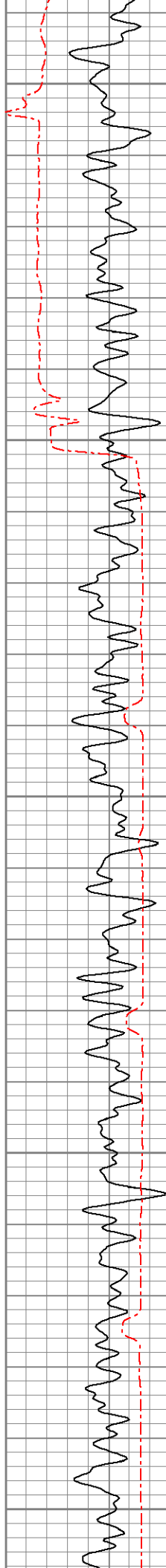
1200







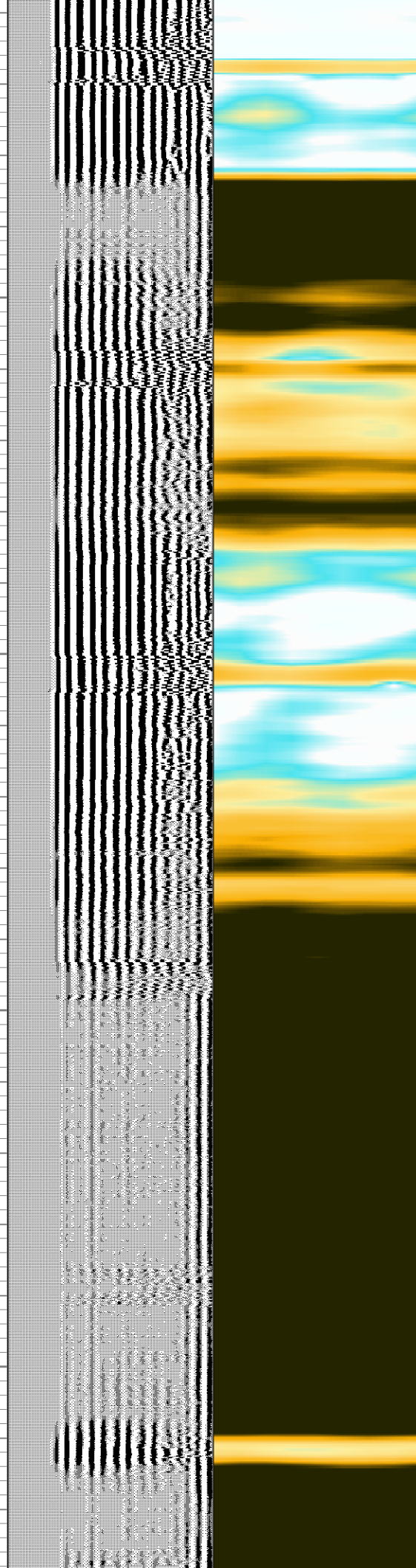
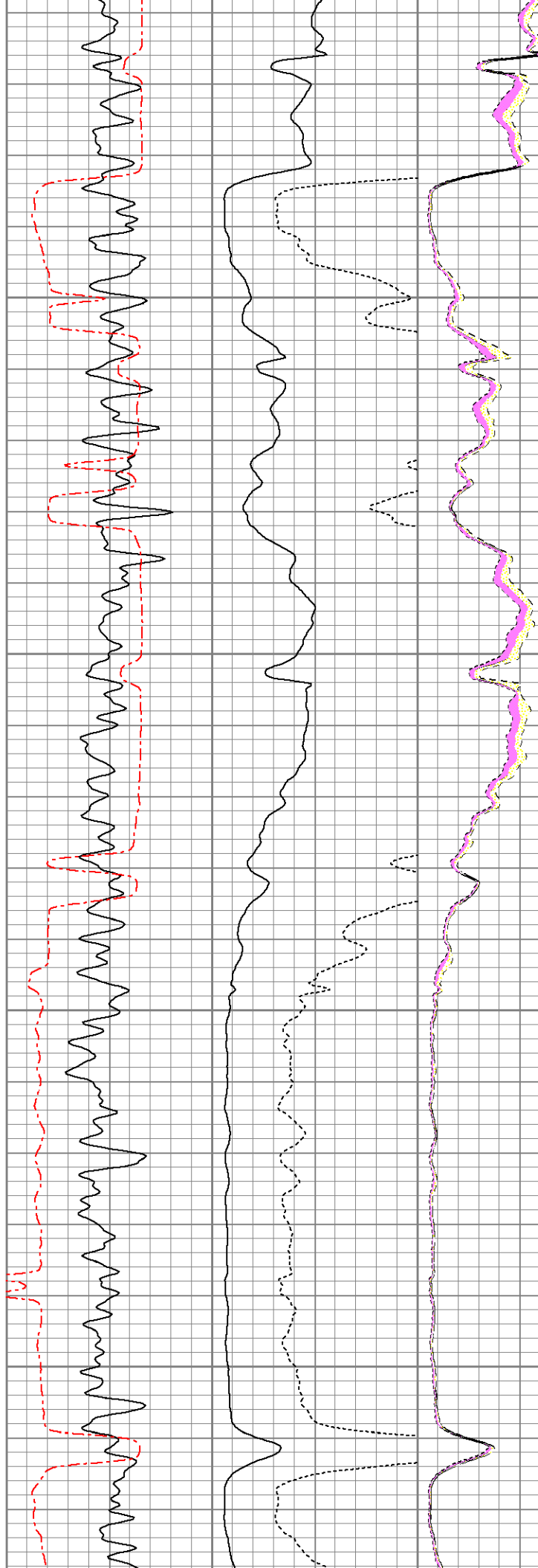


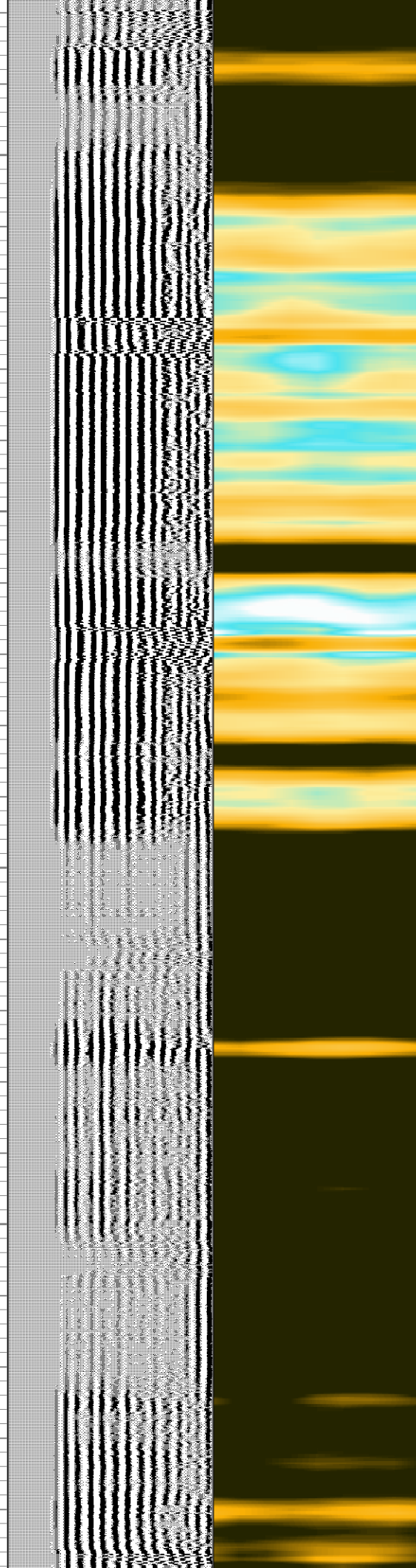
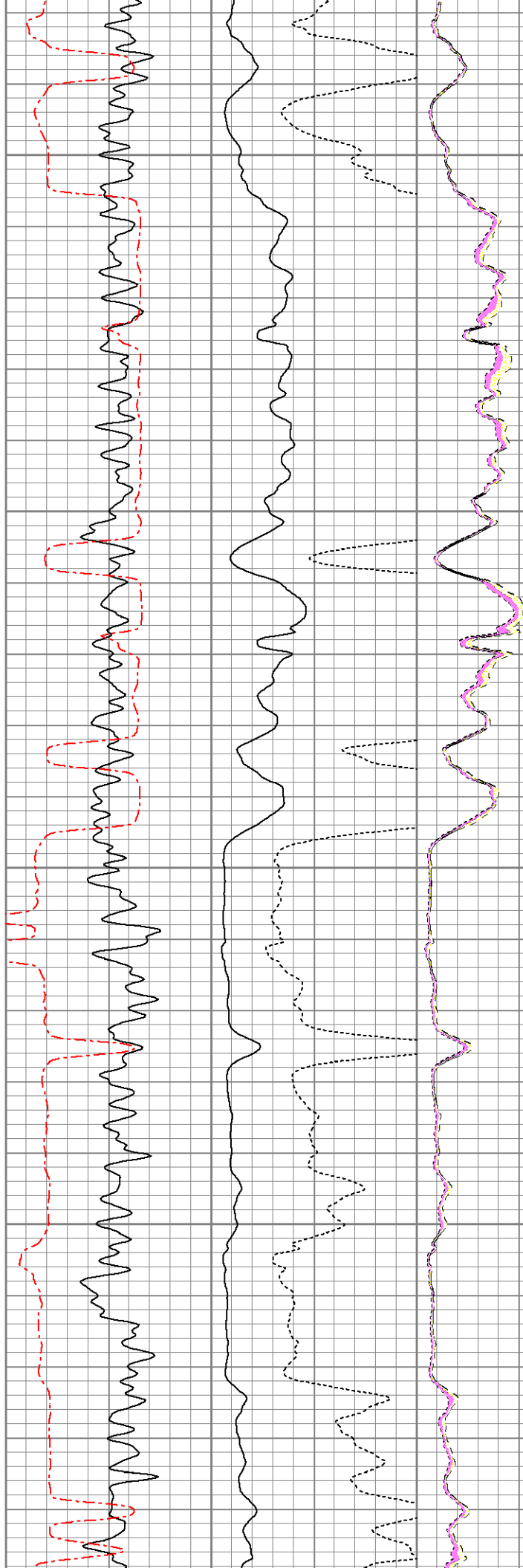
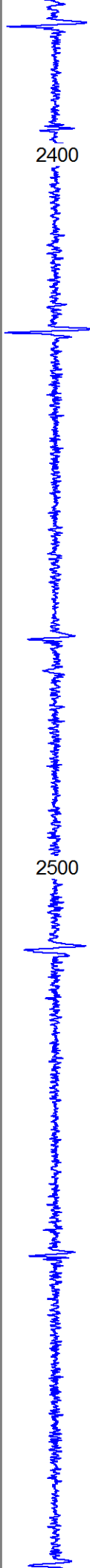




2200

2300

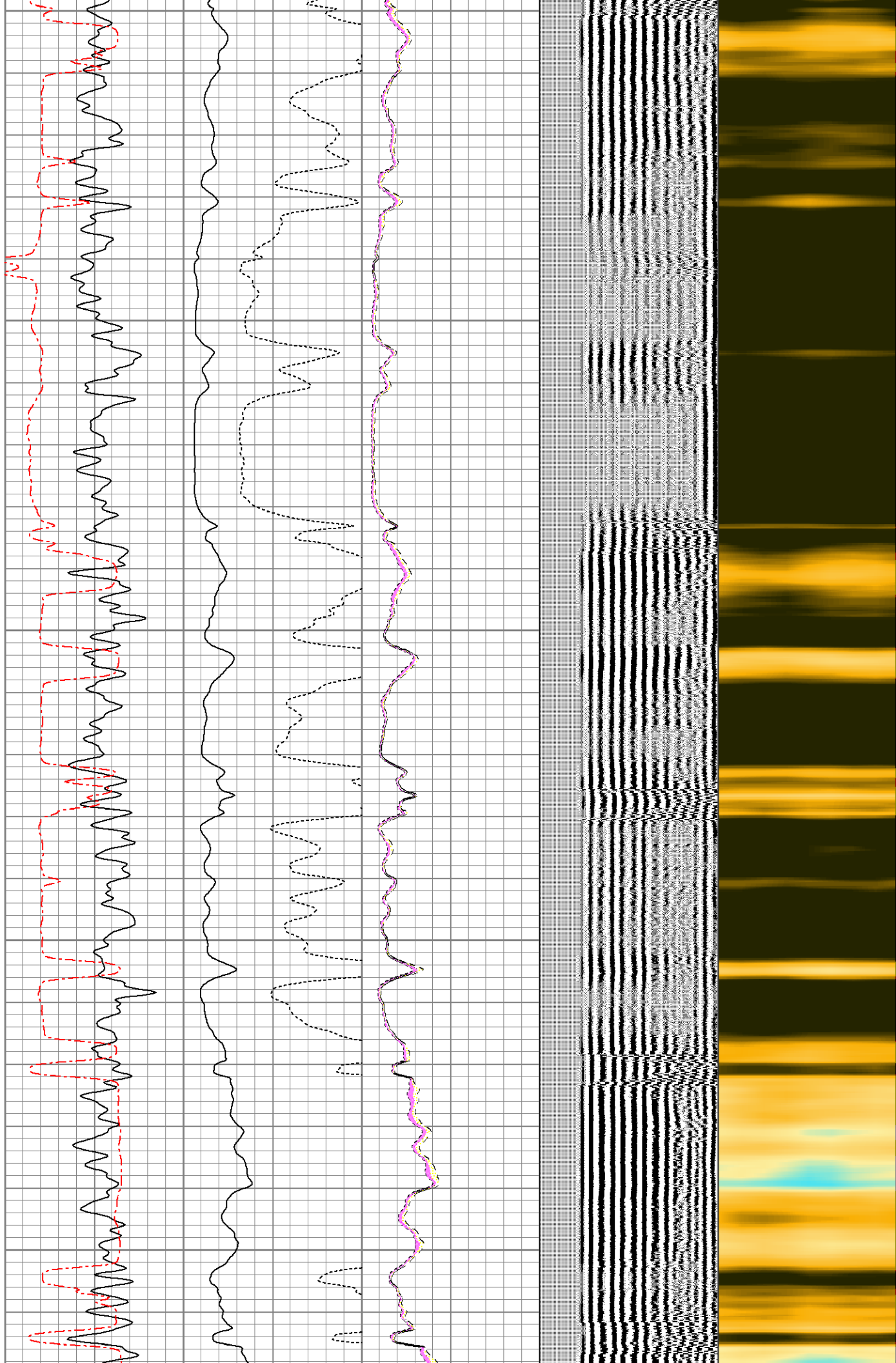


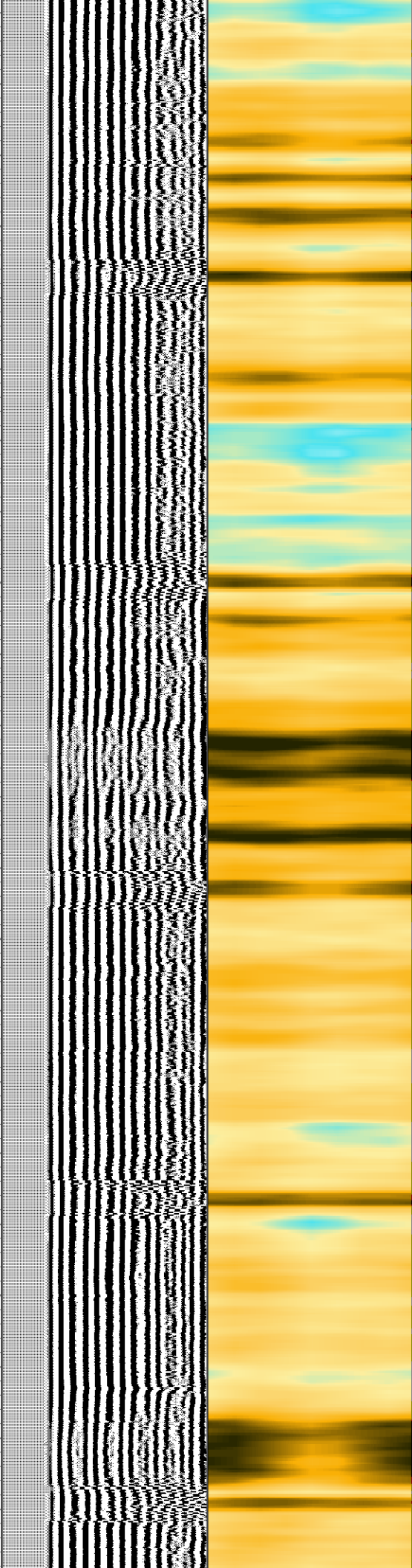
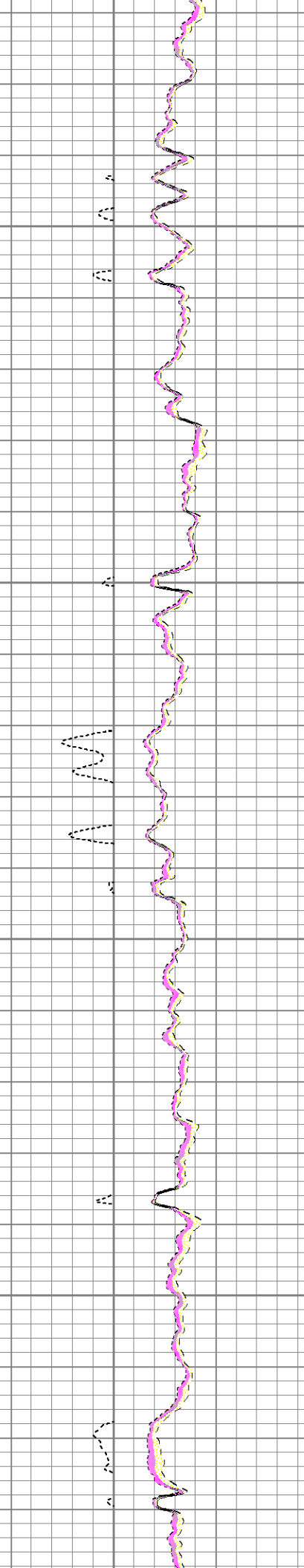


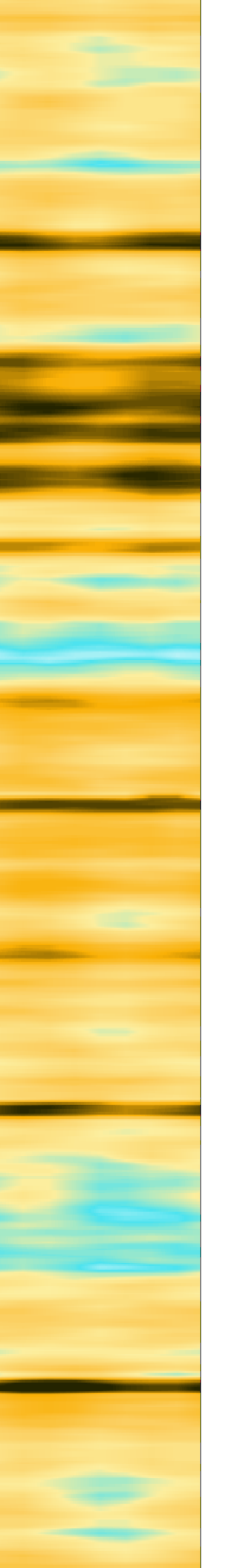
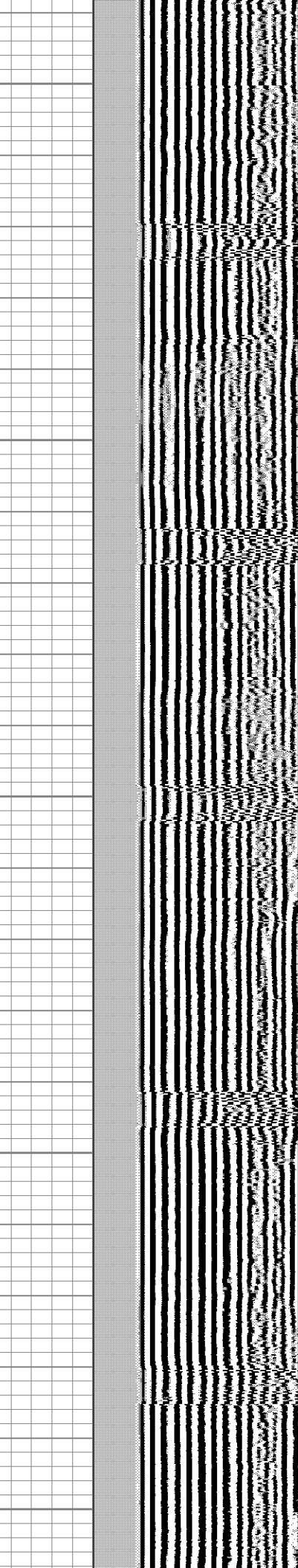
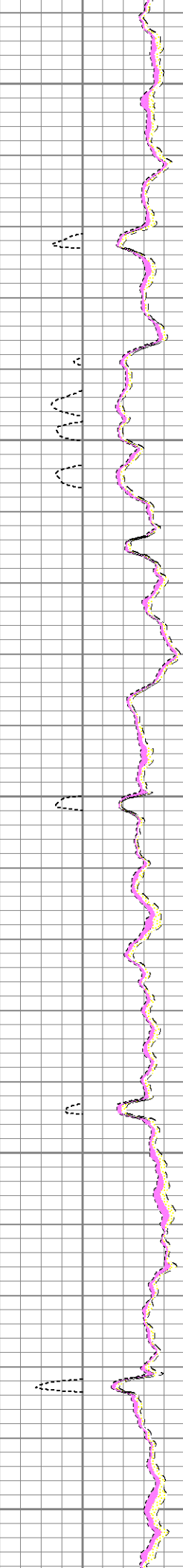
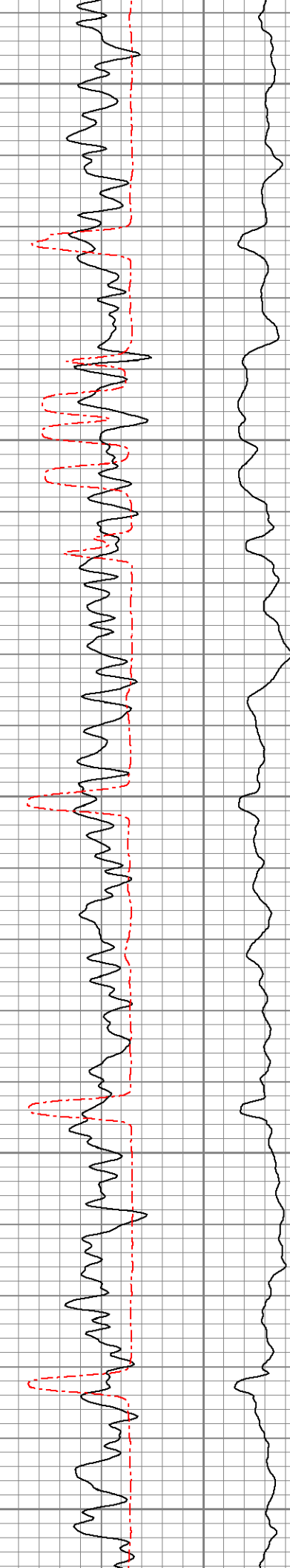
2600

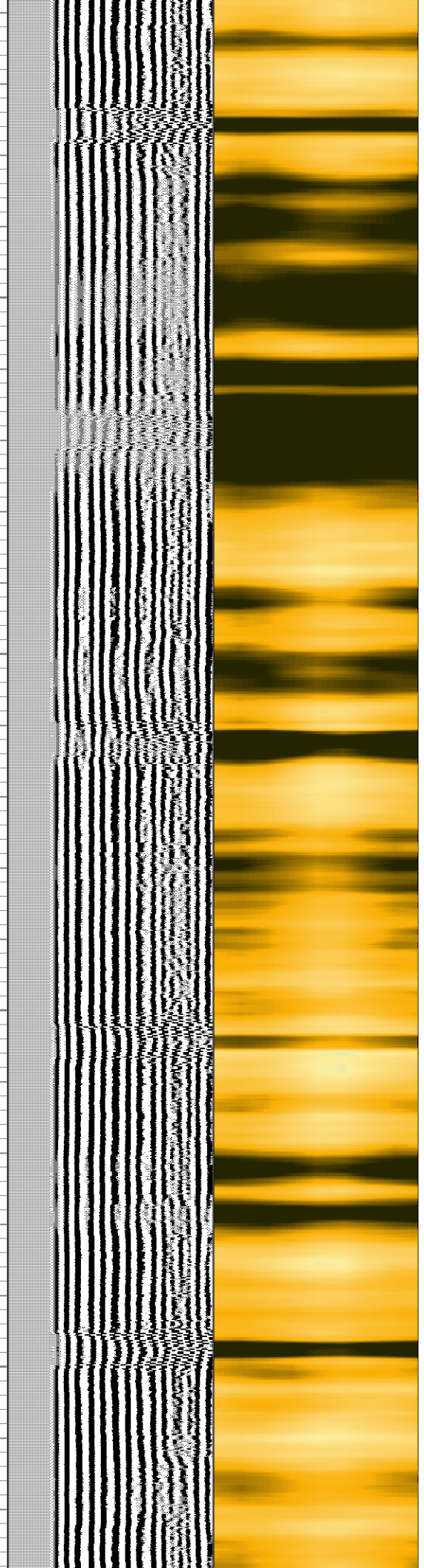
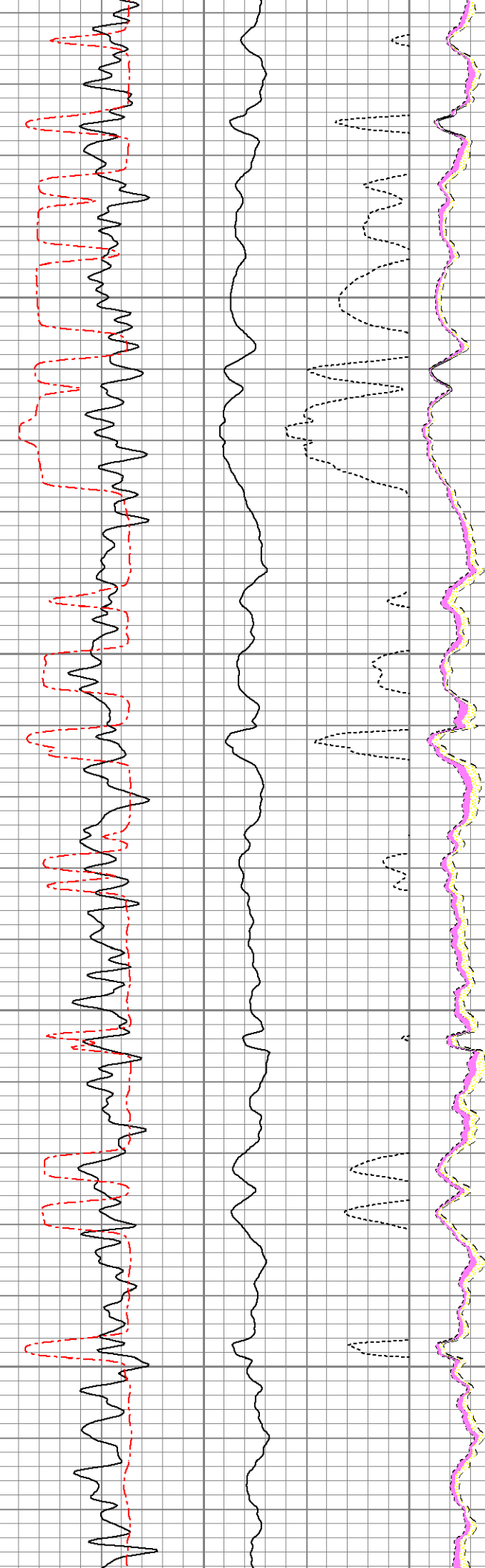
2700

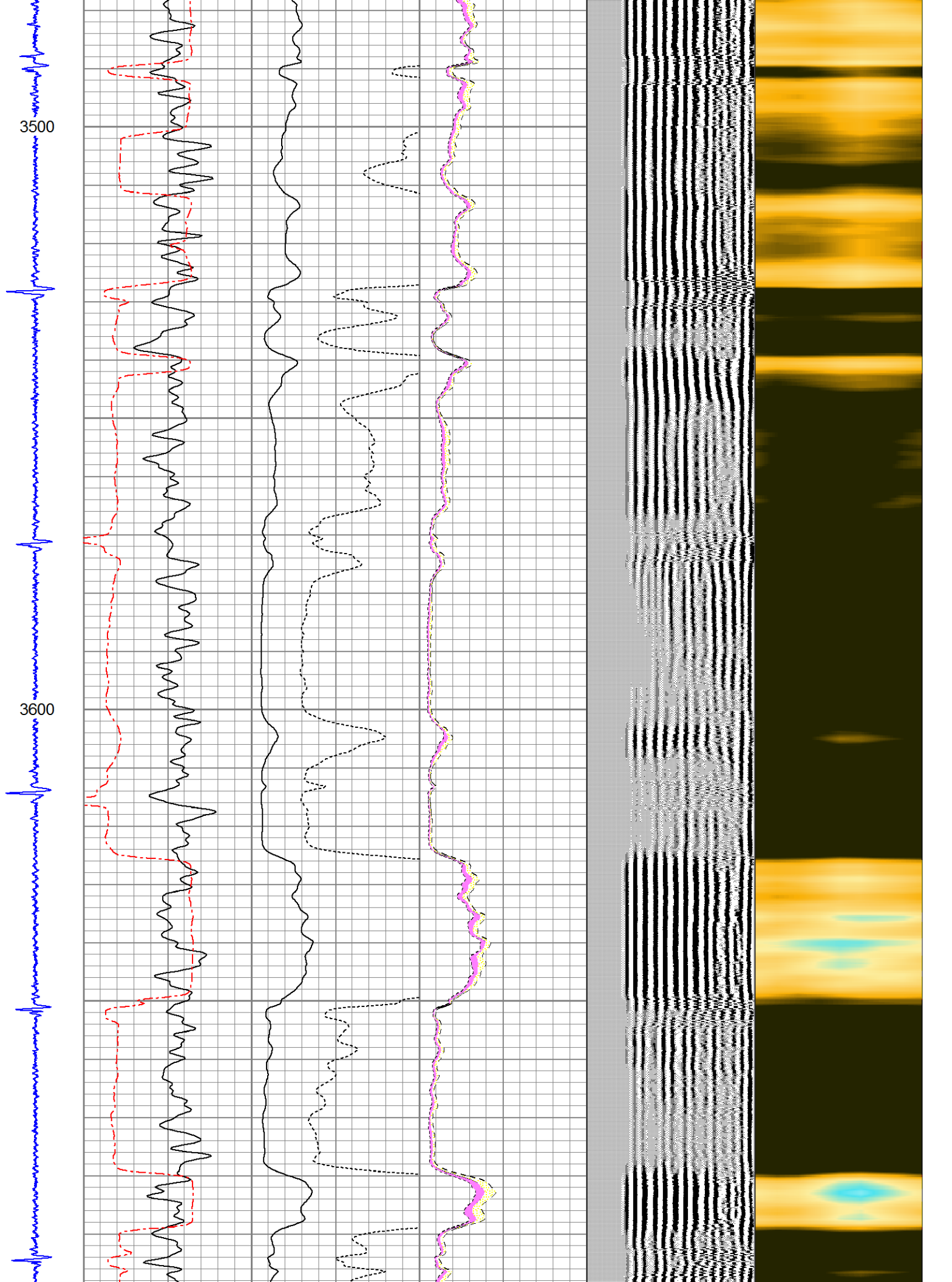
2800

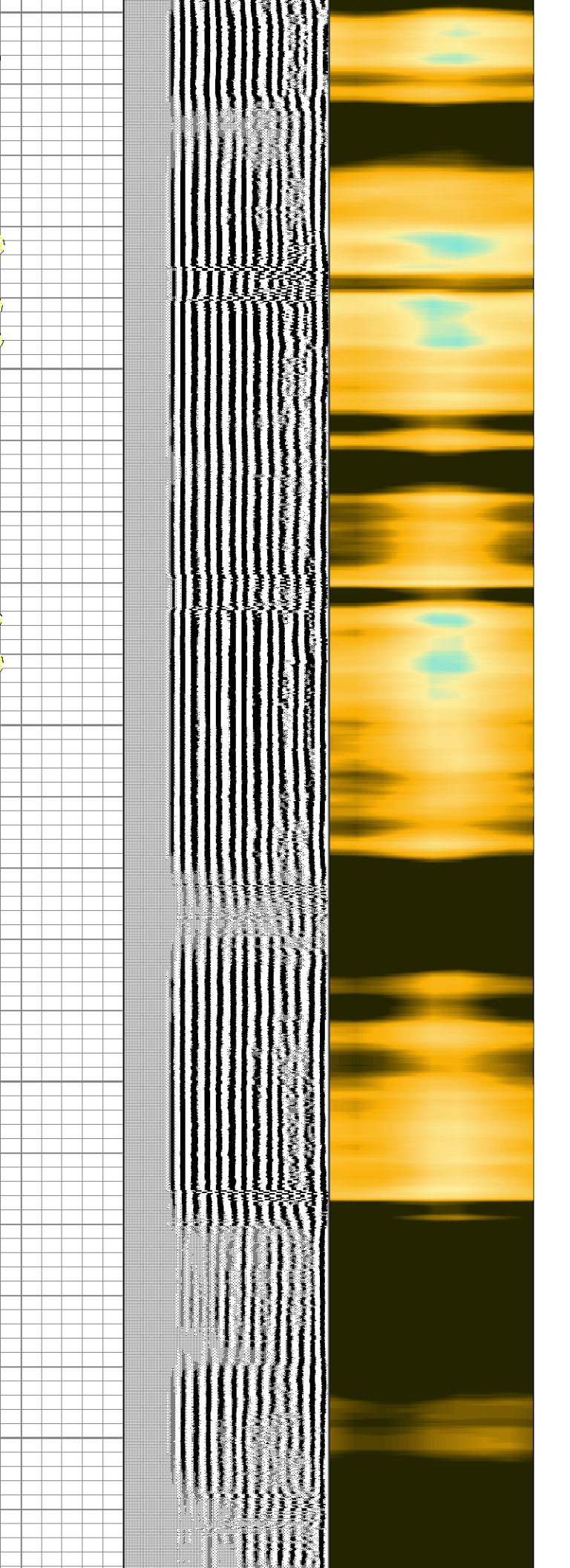
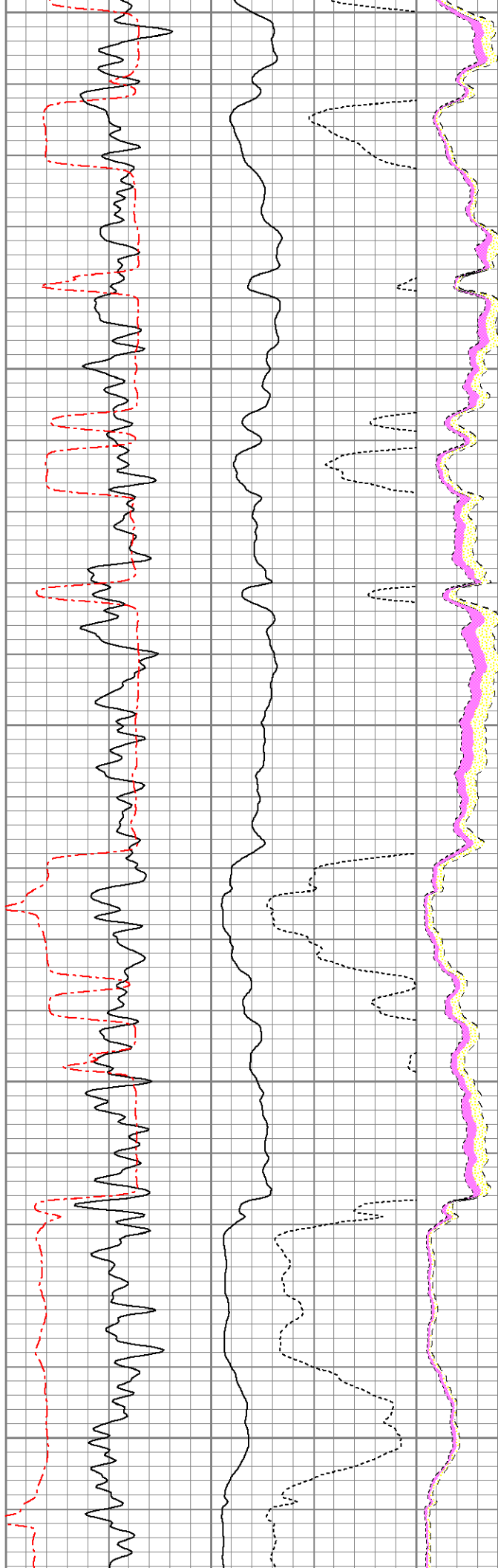


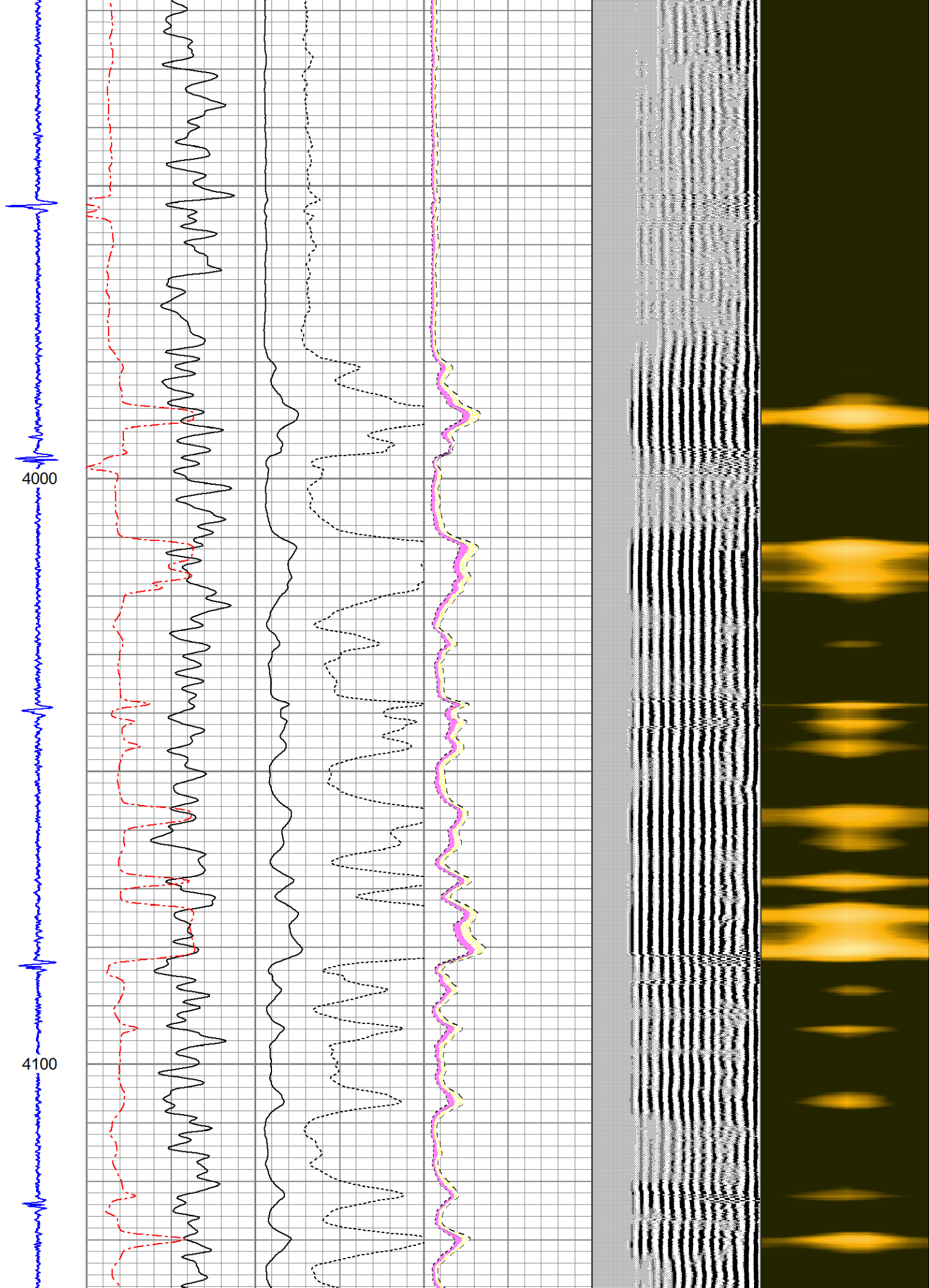


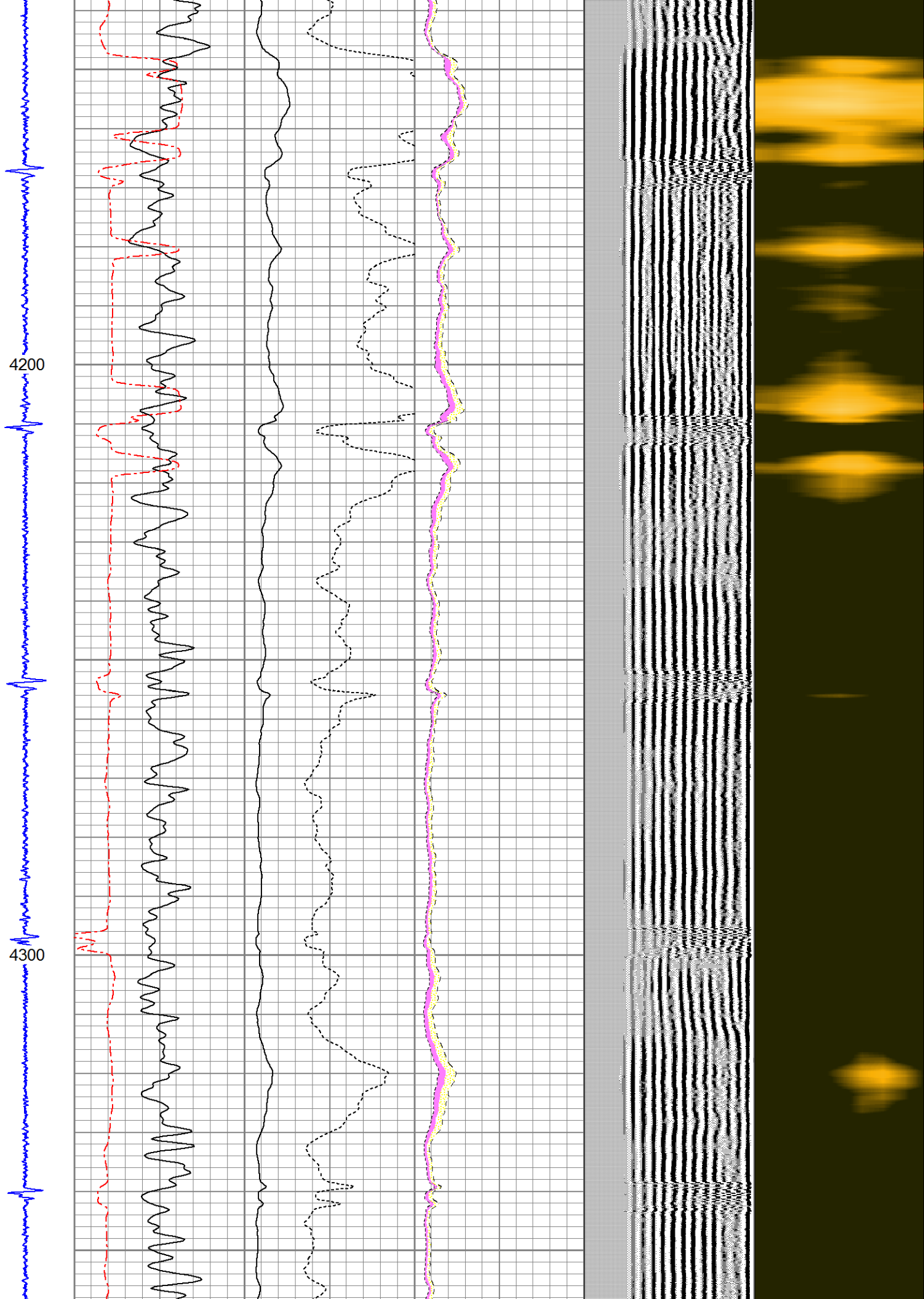


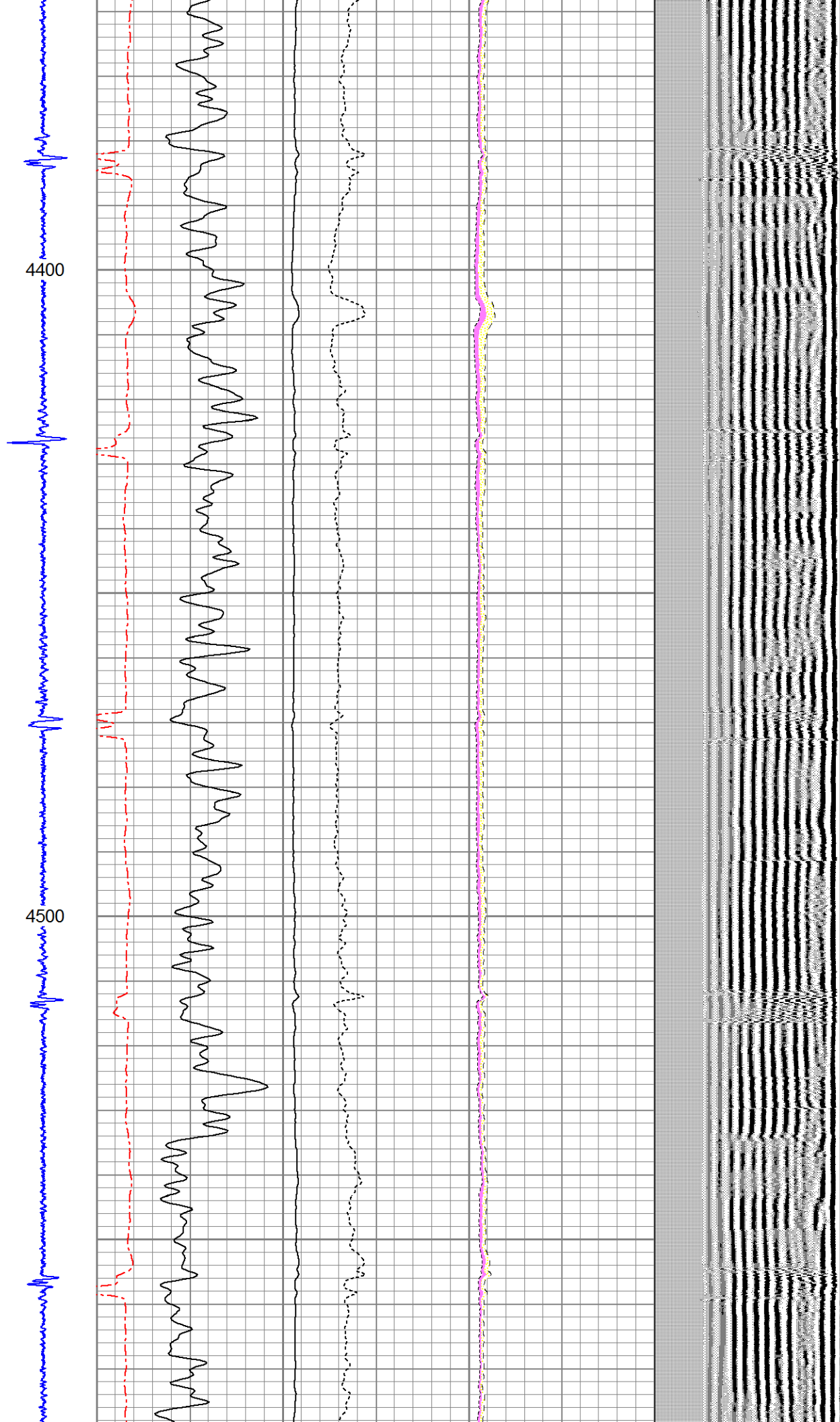


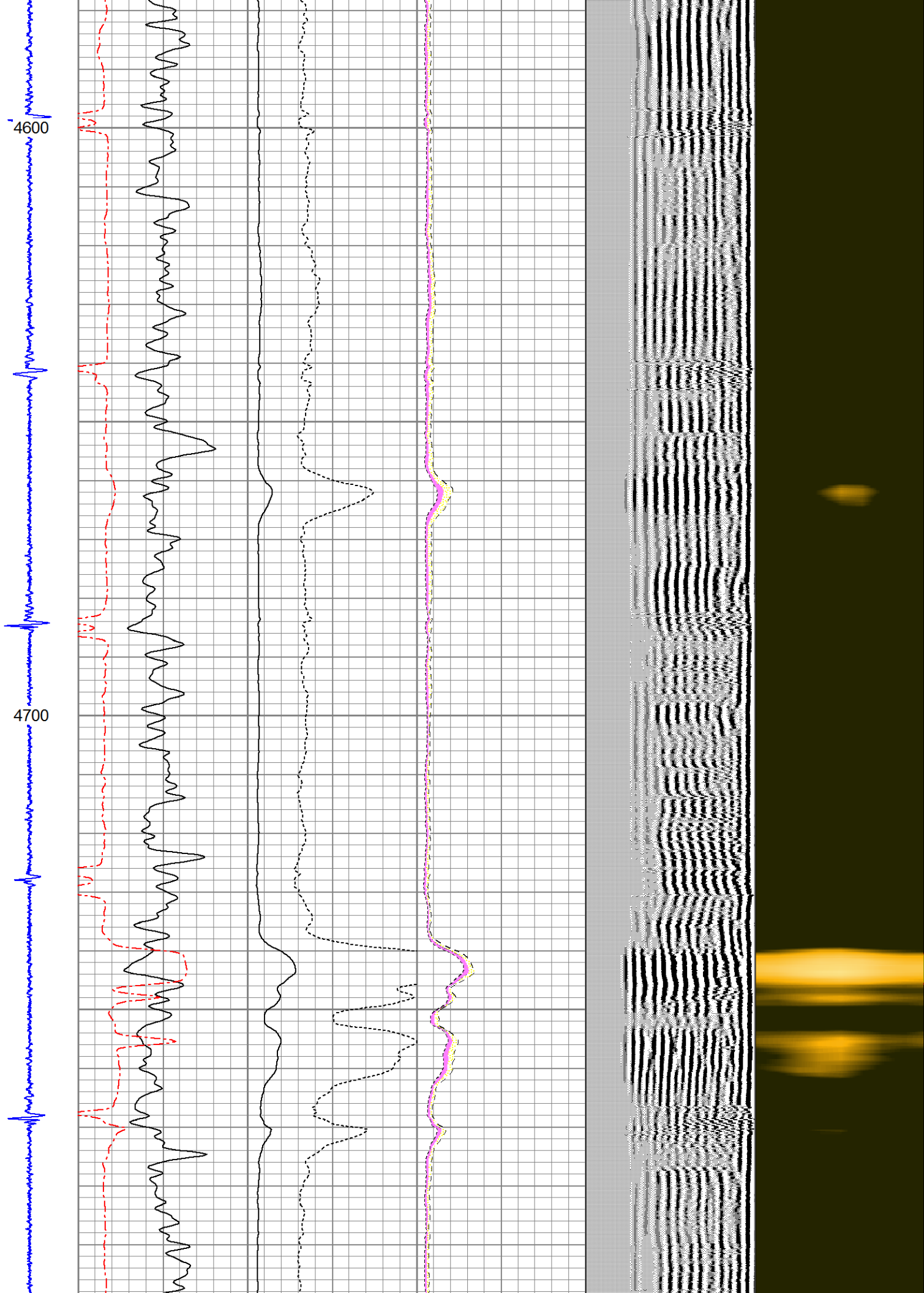


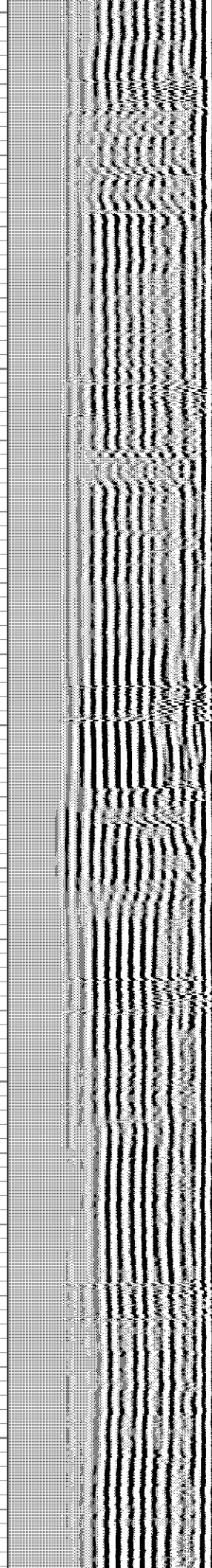
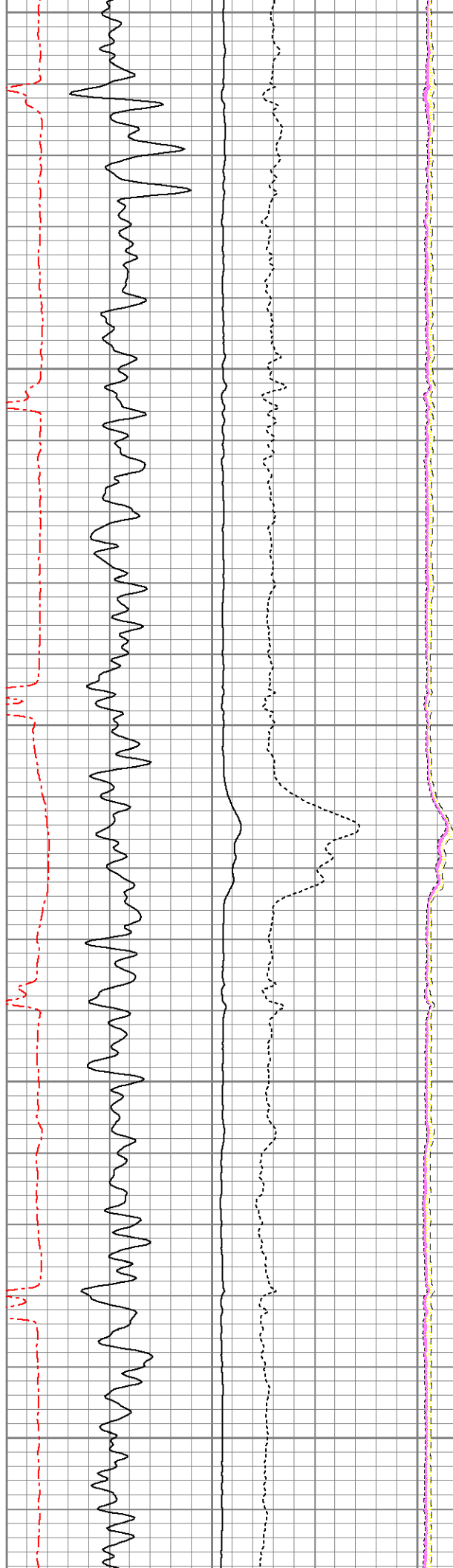


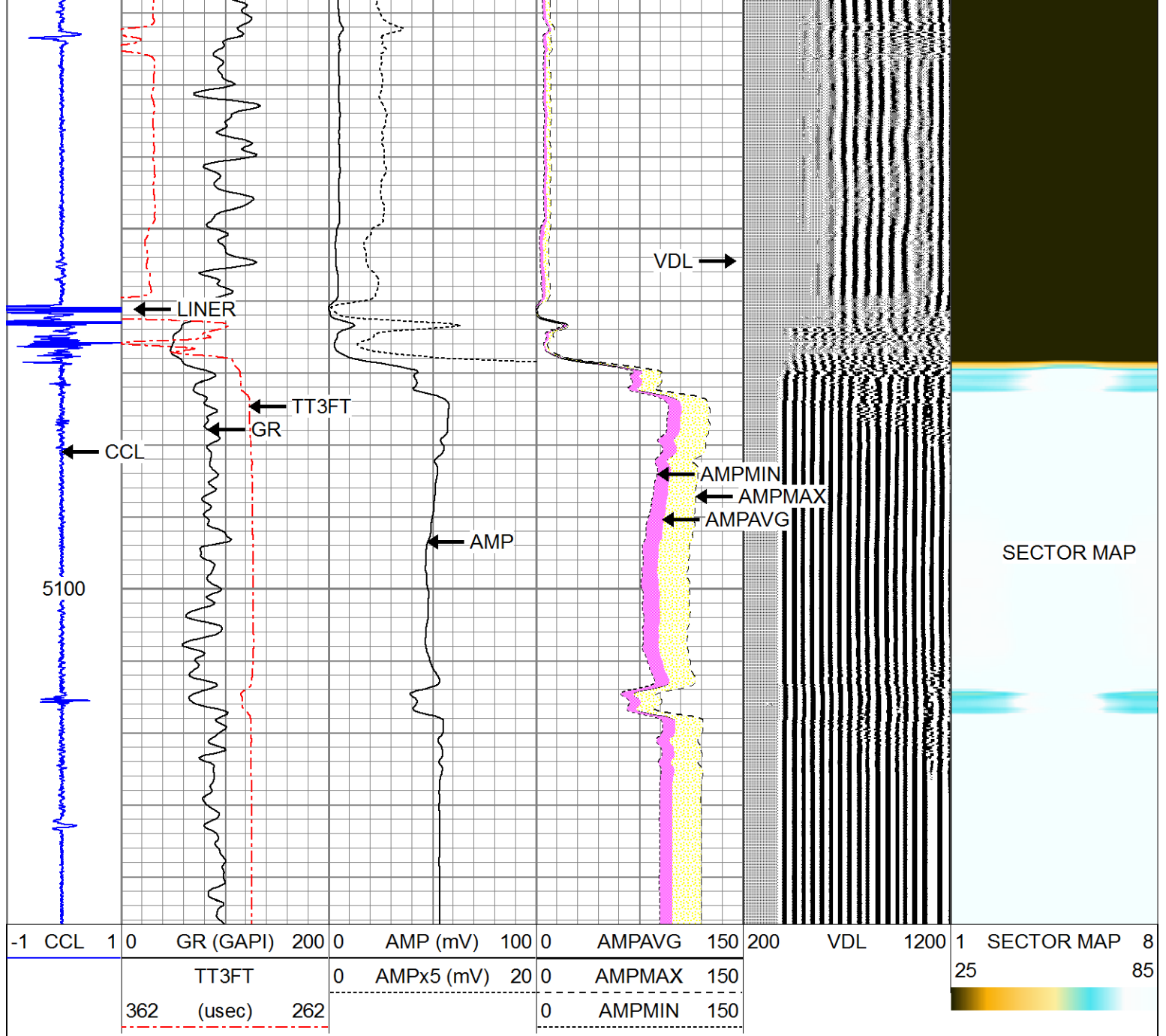












Calibration Report

Database File: 05123380990000_3d_19n_21hz.db
 Dataset Pathname: pass4
 Dataset Creation: Sun Feb 16 10:48:03 2014 by Log 7.0 B1

Gamma Ray Calibration Report

Serial Number:	111211
Tool Model:	Probe
Performed:	Sun Jun 13 14:33:21 1993
Calibrator Value:	1.0 GAPI
Background Reading:	0.0 cps
Calibrator Reading:	1.0 cps
Sensitivity:	1.0000 GAPI/cps

Segmented Cement Bond Log Calibration Report

Serial Number:	Base
Tool Model:	Probe

Tool Model:	Probe	
Calibration Casing Diameter:	7.000	in
Calibration Depth:	262.758	ft

Master Calibration, performed Sun Feb 16 10:22:12 2014:

	Raw (v)		Calibrated (mv)		Results	
	Zero	Cal	Zero	Cal	Gain	Offset
3'	0.012	0.778	0.000	62.165	81.231	-1.006
CAL	1.190	1.190				
5'	0.013	0.370	0.000	62.165	174.063	-2.310
SUM						
S1	0.012	0.721	0.000	100.000	141.110	-1.707
S2	0.012	0.727	0.000	100.000	140.049	-1.745
S3	0.013	0.752	0.000	100.000	135.257	-1.719
S4	0.013	0.784	0.000	100.000	129.653	-1.627
S5	0.012	0.789	0.000	100.000	128.815	-1.607
S6	0.013	0.797	0.000	100.000	127.512	-1.619
S7	0.012	0.778	0.000	100.000	130.648	-1.609
S8	0.013	0.749	0.000	100.000	135.865	-1.708

Internal Reference Calibration, performed Wed Aug 21 12:08:58 2013:

	Raw (v)		Calibrated (v)		Results	
	Zero	Cal	Zero	Cal	Gain	Offset
CAL	0.000	0.000	1.190	1.190	1.000	0.000

Air Zero Calibration, performed Wed Aug 21 11:24:02 2013:

	Raw (v)		Calibrated (v)		Results
	Zero		Zero		Offset
3'	0.000		0.000		0.000
5'	0.000		0.000		0.000
SUM					
S1	0.000		0.000		0.000
S2	0.000		0.000		0.000
S3	0.000		0.000		0.000
S4	0.000		0.000		0.000
S5	0.000		0.000		0.000
S6	0.000		0.000		0.000
S7	0.000		0.000		0.000
S8	0.000		0.000		0.000