

Whiting Oil and Gas Corporation

Weld County, CO

Sec. 25-T10N-R58W

Razor #25B-2550

Plan A

Plan: Rev A0

Sperry Drilling Services

Proposal Report

16 December, 2013

Well Coordinates: 1,544,619.46 N, 3,467,509.65 E (40° 48' 58.10" N, 103° 48' 39.32" W)

Ground Level: 4,756.40 usft

Local Coordinate Origin:

Viewing Datum:

TVDs to System:

North Reference:

Unit System:

Geodetic Scale Factor Applied

Version: 5000.1 Build: 70

Centered on Well Razor #25B-2550

KB 22 ft @ 4778.40usft (Frontier 26)

N

True

API - US Survey Feet - Custom

HALLIBURTON

Project: Weld County, CO
Site: Sec. 25-T10N-R58W
Well: Razor #25B-2550
Wellbore: Plan A
Plan: Rev A0

Whiting Oil and Gas Corporation



SECTION DETAILS										
Sec	MD	Inc	Azi	TVD	+N/-S	+E/-W	Dleg	TFace	VSect	Target
1	0.00	0.00	0.00	0.00	0.00	0.00	0.00	0.00	0.00	
2	500.00	0.00	0.00	500.00	0.00	0.00	0.00	0.00	0.00	
3	700.00	4.00	196.22	699.84	-6.70	-1.95	2.00	196.22	6.83	
4	5170.51	4.00	196.22	5159.46	-306.14	-89.06	0.00	0.00	311.98	
5	5952.33	90.00	196.22	5644.00	-805.05	-234.19	11.00	0.00	820.43	
6	6027.33	90.00	196.22	5644.00	-877.07	-255.14	0.00	0.00	893.82	
7	6567.85	90.00	180.00	5644.00	-1410.40	-331.16	3.00	-90.00	1431.36	
8	9538.60	90.00	180.00	5644.00	-4381.14	-331.39	0.00	0.00	4393.66	Razor 25B-2550 Rev A0 Tgt

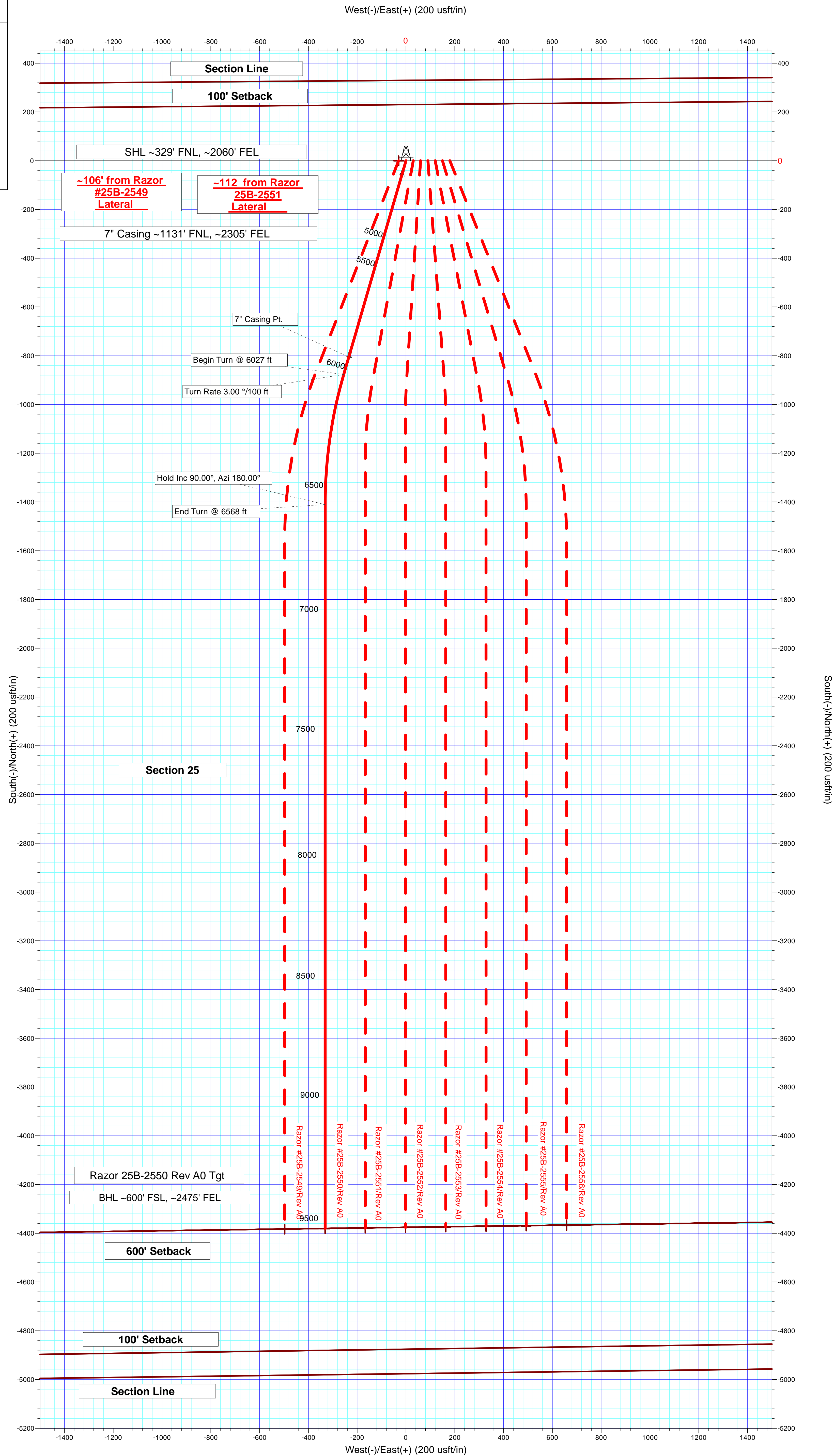
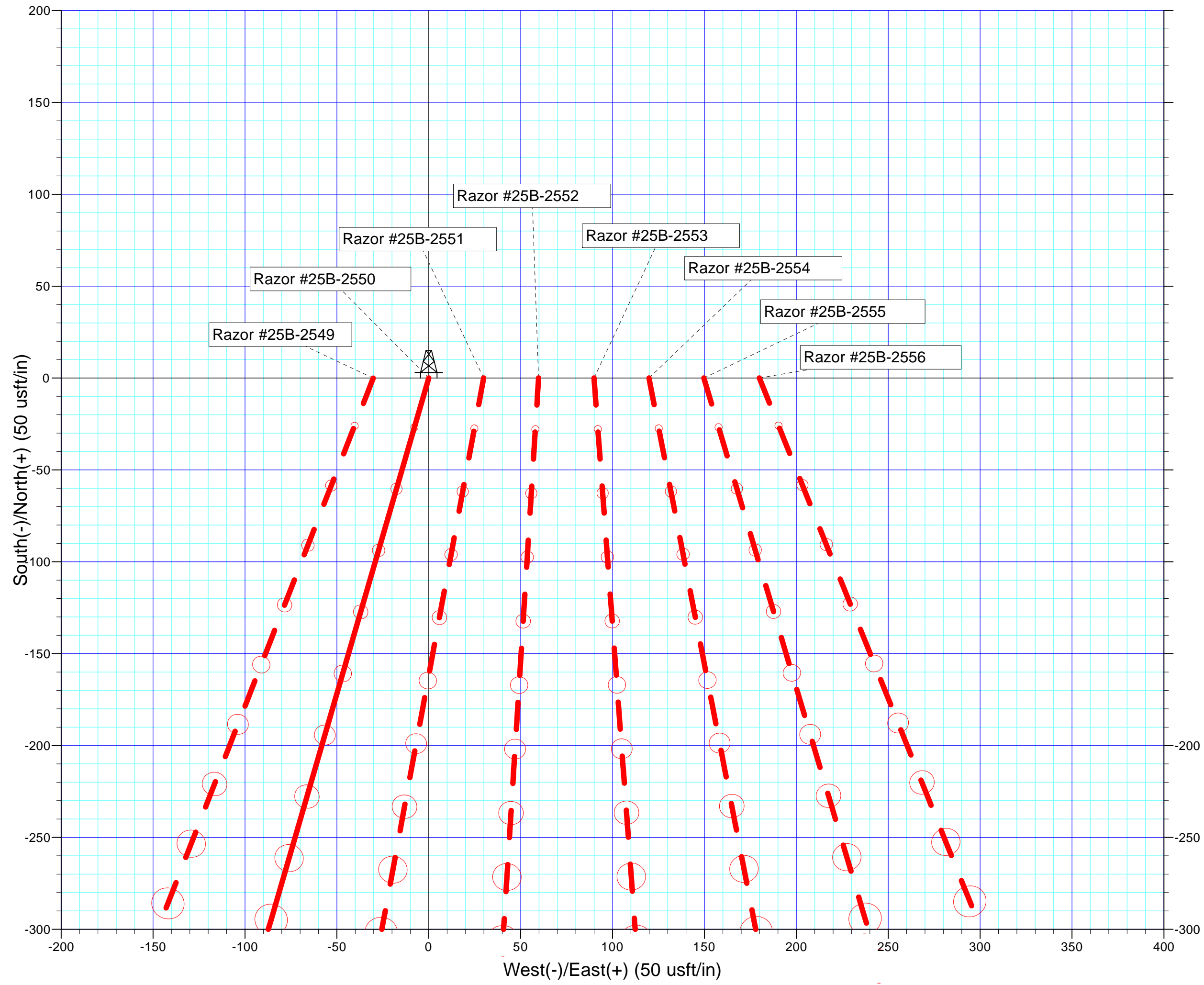
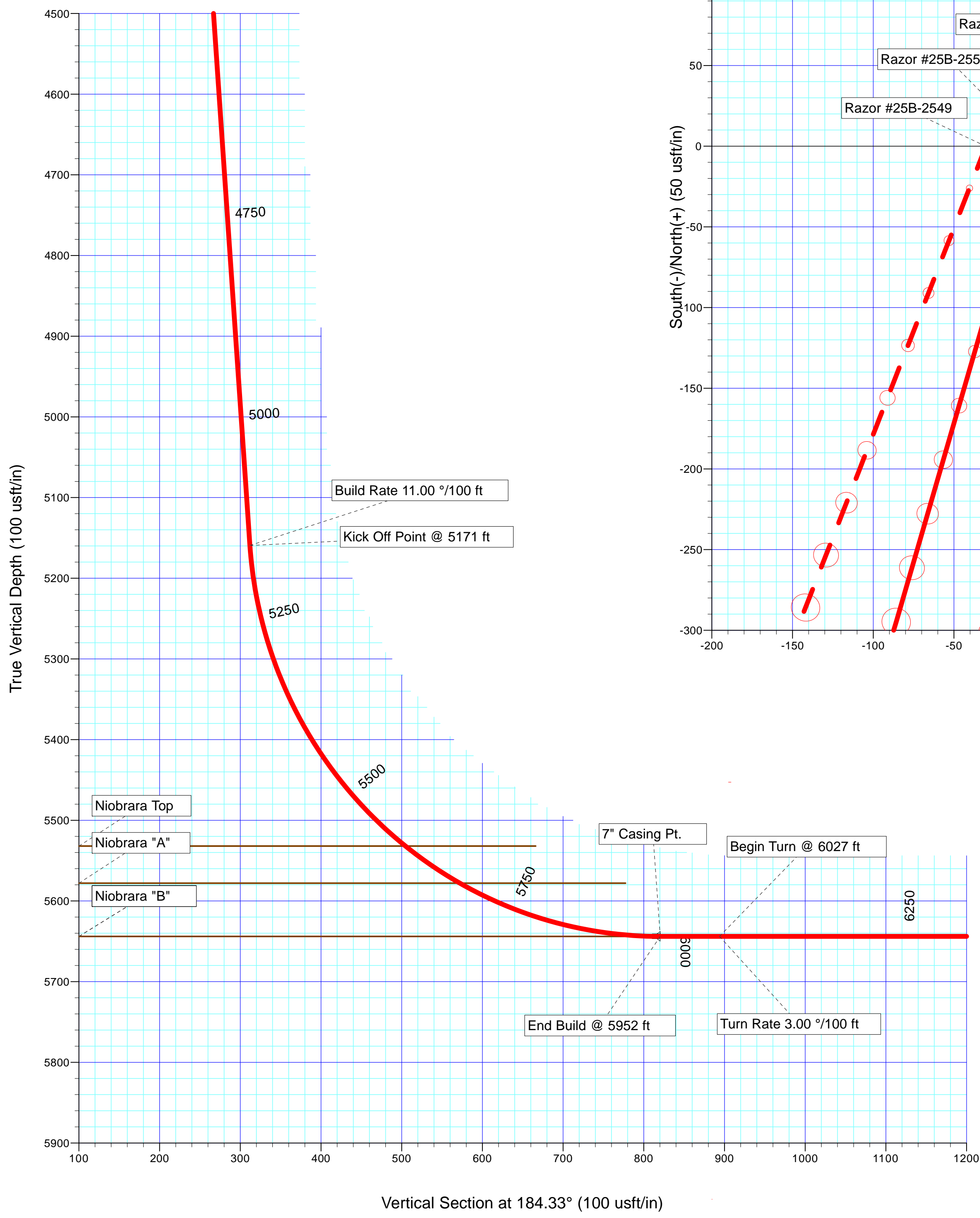
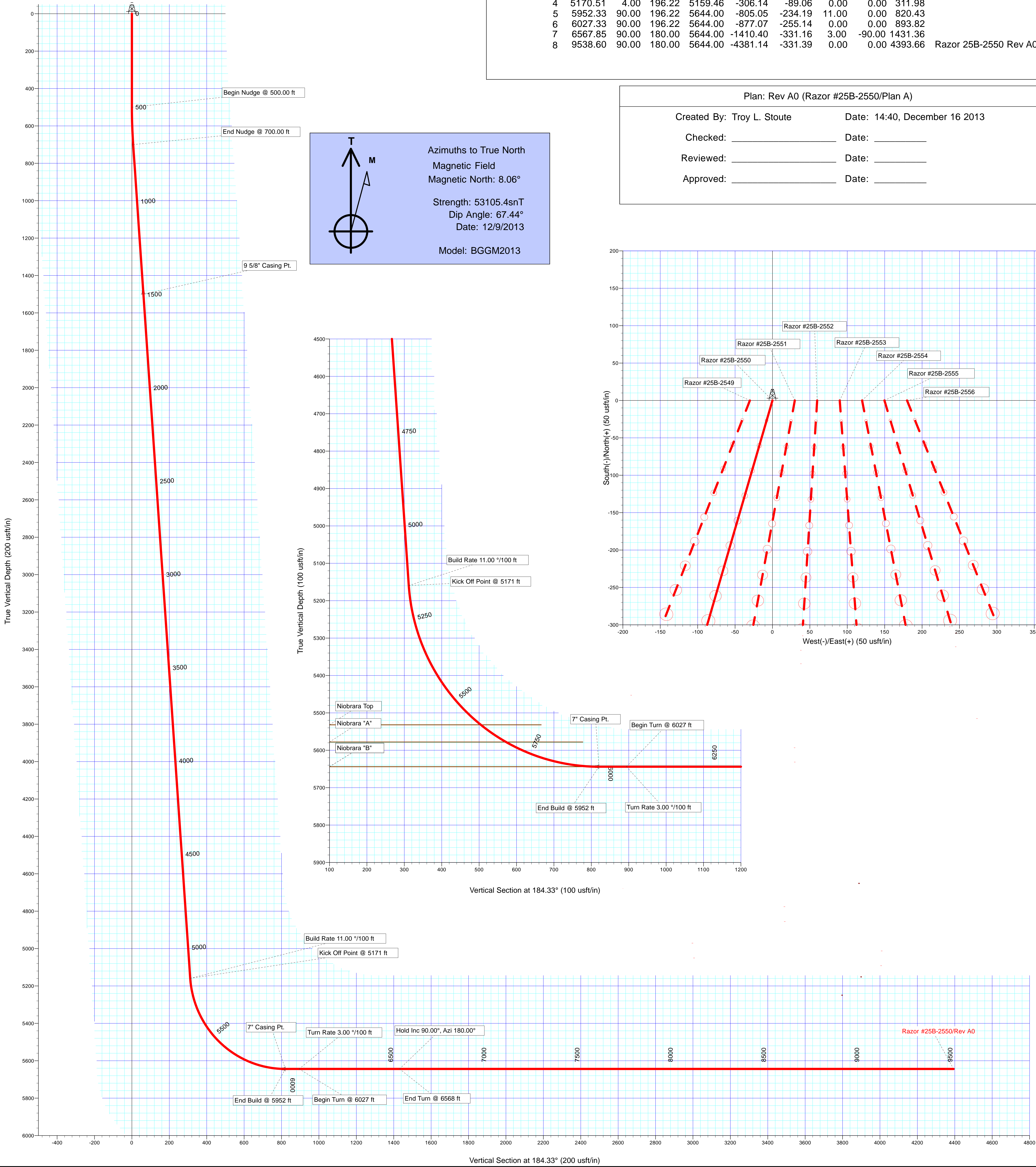
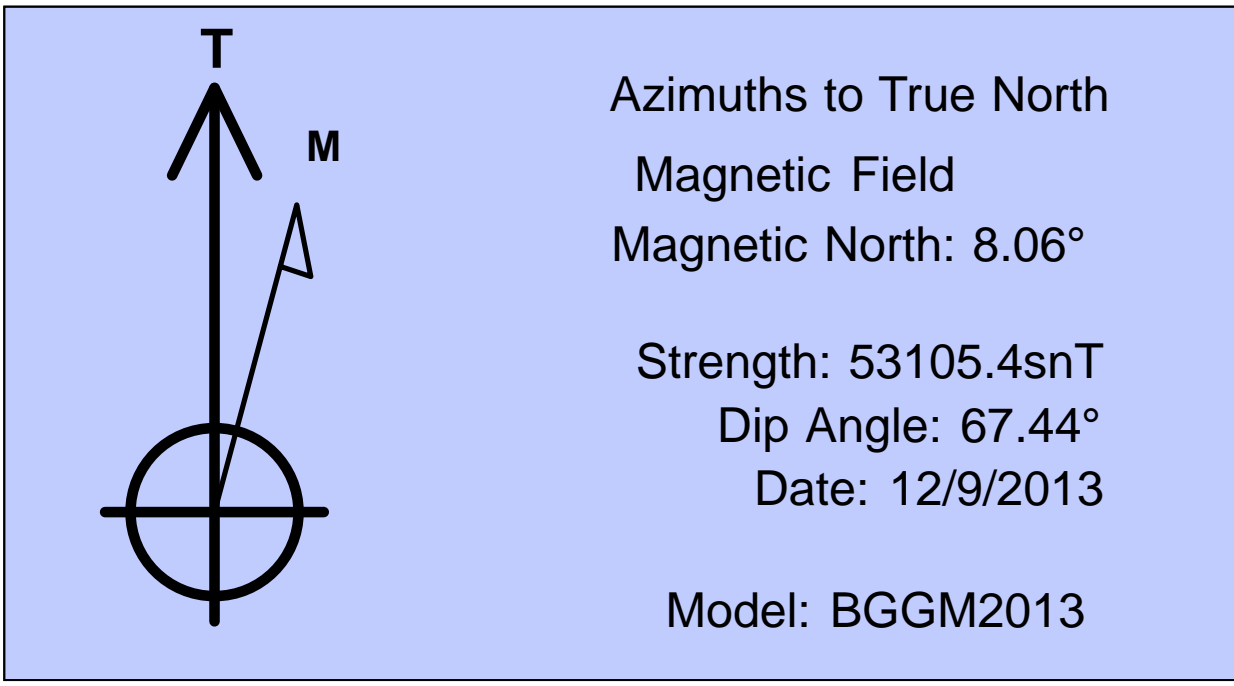
Plan: Rev A0 (Razor #25B-2550/Plan A)

Created By: Troy L. StouteDate: 14:40, December 16 2013

Checked: _____Date: _____

Reviewed: _____Date: _____

Approved: _____Date: _____



Plan Report for Razor #25B-2550 - Rev A0

Measured Depth (usft)	Inclination (°)	Azimuth (°)	Vertical Depth (usft)	+N-S (usft)	+E-W (usft)	Vertical Section (usft)	Dogleg Rate (°/100usft)	Build Rate (°/100usft)	Turn Rate (°/100usft)	Toolface Azimuth (°)
0.00	0.00	0.00	0.00	0.00	0.00	0.00	0.00	0.00	0.00	0.00
100.00	0.00	0.00	100.00	0.00	0.00	0.00	0.00	0.00	0.00	0.00
200.00	0.00	0.00	200.00	0.00	0.00	0.00	0.00	0.00	0.00	0.00
300.00	0.00	0.00	300.00	0.00	0.00	0.00	0.00	0.00	0.00	0.00
400.00	0.00	0.00	400.00	0.00	0.00	0.00	0.00	0.00	0.00	0.00
500.00	0.00	0.00	500.00	0.00	0.00	0.00	0.00	0.00	0.00	0.00
Begin Nudge @ 500.00 ft										
600.00	2.00	196.22	599.98	-1.68	-0.49	1.71	2.00	2.00	0.00	196.22
700.00	4.00	196.22	699.84	-6.70	-1.95	6.83	2.00	2.00	0.00	0.00
End Nudge @ 700.00 ft										
800.00	4.00	196.22	799.59	-13.40	-3.90	13.65	0.00	0.00	0.00	0.00
900.00	4.00	196.22	899.35	-20.10	-5.85	20.48	0.00	0.00	0.00	0.00
1,000.00	4.00	196.22	999.11	-26.79	-7.79	27.31	0.00	0.00	0.00	0.00
1,100.00	4.00	196.22	1,098.86	-33.49	-9.74	34.13	0.00	0.00	0.00	0.00
1,200.00	4.00	196.22	1,198.62	-40.19	-11.69	40.96	0.00	0.00	0.00	0.00
1,300.00	4.00	196.22	1,298.38	-46.89	-13.64	47.78	0.00	0.00	0.00	0.00
1,400.00	4.00	196.22	1,398.13	-53.59	-15.59	54.61	0.00	0.00	0.00	0.00
1,500.00	4.00	196.22	1,497.89	-60.28	-17.54	61.44	0.00	0.00	0.00	0.00
1,502.12	4.00	196.22	1,500.00	-60.43	-17.58	61.58	0.00	0.00	0.00	0.00
9 5/8" Casing Pt.										
1,600.00	4.00	196.22	1,597.65	-66.98	-19.49	68.26	0.00	0.00	0.00	0.00
1,700.00	4.00	196.22	1,697.40	-73.68	-21.43	75.09	0.00	0.00	0.00	0.00
1,800.00	4.00	196.22	1,797.16	-80.38	-23.38	81.91	0.00	0.00	0.00	0.00
1,900.00	4.00	196.22	1,896.91	-87.08	-25.33	88.74	0.00	0.00	0.00	0.00
2,000.00	4.00	196.22	1,996.67	-93.77	-27.28	95.57	0.00	0.00	0.00	0.00
2,100.00	4.00	196.22	2,096.43	-100.47	-29.23	102.39	0.00	0.00	0.00	0.00
2,200.00	4.00	196.22	2,196.18	-107.17	-31.18	109.22	0.00	0.00	0.00	0.00
2,300.00	4.00	196.22	2,295.94	-113.87	-33.12	116.04	0.00	0.00	0.00	0.00
2,400.00	4.00	196.22	2,395.70	-120.57	-35.07	122.87	0.00	0.00	0.00	0.00
2,500.00	4.00	196.22	2,495.45	-127.26	-37.02	129.69	0.00	0.00	0.00	0.00
2,600.00	4.00	196.22	2,595.21	-133.96	-38.97	136.52	0.00	0.00	0.00	0.00
2,700.00	4.00	196.22	2,694.97	-140.66	-40.92	143.35	0.00	0.00	0.00	0.00
2,800.00	4.00	196.22	2,794.72	-147.36	-42.87	150.17	0.00	0.00	0.00	0.00
2,900.00	4.00	196.22	2,894.48	-154.06	-44.82	157.00	0.00	0.00	0.00	0.00
3,000.00	4.00	196.22	2,994.23	-160.75	-46.76	163.82	0.00	0.00	0.00	0.00
3,100.00	4.00	196.22	3,093.99	-167.45	-48.71	170.65	0.00	0.00	0.00	0.00
3,200.00	4.00	196.22	3,193.75	-174.15	-50.66	177.48	0.00	0.00	0.00	0.00
3,300.00	4.00	196.22	3,293.50	-180.85	-52.61	184.30	0.00	0.00	0.00	0.00
3,400.00	4.00	196.22	3,393.26	-187.55	-54.56	191.13	0.00	0.00	0.00	0.00
3,500.00	4.00	196.22	3,493.02	-194.24	-56.51	197.95	0.00	0.00	0.00	0.00
3,600.00	4.00	196.22	3,592.77	-200.94	-58.46	204.78	0.00	0.00	0.00	0.00
3,700.00	4.00	196.22	3,692.53	-207.64	-60.40	211.60	0.00	0.00	0.00	0.00
3,800.00	4.00	196.22	3,792.29	-214.34	-62.35	218.43	0.00	0.00	0.00	0.00
3,900.00	4.00	196.22	3,892.04	-221.04	-64.30	225.26	0.00	0.00	0.00	0.00
4,000.00	4.00	196.22	3,991.80	-227.73	-66.25	232.08	0.00	0.00	0.00	0.00
4,100.00	4.00	196.22	4,091.56	-234.43	-68.20	238.91	0.00	0.00	0.00	0.00
4,200.00	4.00	196.22	4,191.31	-241.13	-70.15	245.73	0.00	0.00	0.00	0.00
4,300.00	4.00	196.22	4,291.07	-247.83	-72.09	252.56	0.00	0.00	0.00	0.00
4,400.00	4.00	196.22	4,390.82	-254.53	-74.04	259.39	0.00	0.00	0.00	0.00
4,500.00	4.00	196.22	4,490.58	-261.22	-75.99	266.21	0.00	0.00	0.00	0.00
4,600.00	4.00	196.22	4,590.34	-267.92	-77.94	273.04	0.00	0.00	0.00	0.00
4,700.00	4.00	196.22	4,690.09	-274.62	-79.89	279.86	0.00	0.00	0.00	0.00
4,800.00	4.00	196.22	4,789.85	-281.32	-81.84	286.69	0.00	0.00	0.00	0.00
4,900.00	4.00	196.22	4,889.61	-288.02	-83.79	293.52	0.00	0.00	0.00	0.00
5,000.00	4.00	196.22	4,989.36	-294.71	-85.73	300.34	0.00	0.00	0.00	0.00
5,100.00	4.00	196.22	5,089.12	-301.41	-87.68	307.17	0.00	0.00	0.00	0.00
5,170.51	4.00	196.22	5,159.46	-306.14	-89.06	311.98	0.00	0.00	0.00	0.00
Build Rate 11.00 °/100 ft - Kick Off Point @ 5171 ft										

Plan Report for Razor #25B-2550 - Rev A0

Measured Depth (usft)	Inclination (°)	Azimuth (°)	Vertical Depth (usft)	+N/-S (usft)	+E/-W (usft)	Vertical Section (usft)	Dogleg Rate (°/100usft)	Build Rate (°/100usft)	Turn Rate (°/100usft)	Toolface Azimuth (°)
5,200.00	7.24	196.22	5,188.80	-308.91	-89.86	314.81	11.00	11.00	0.00	0.00
5,300.00	18.24	196.22	5,286.19	-330.06	-96.02	336.36	11.00	11.00	0.00	0.00
5,400.00	29.24	196.22	5,377.58	-368.66	-107.25	375.70	11.00	11.00	0.00	0.00
5,500.00	40.24	196.22	5,459.63	-423.30	-123.14	431.38	11.00	11.00	0.00	0.00
5,600.00	51.24	196.22	5,529.31	-491.96	-143.11	501.36	11.00	11.00	0.00	0.00
5,604.32	51.72	196.22	5,532.00	-495.21	-144.06	504.67	11.00	11.00	0.00	0.00
Niobrara Top										
5,687.28	60.84	196.22	5,578.00	-561.39	-163.31	572.11	11.00	11.00	0.00	0.00
Niobrara "A"										
5,700.00	62.24	196.22	5,584.06	-572.13	-166.44	583.06	11.00	11.00	0.00	0.00
5,800.00	73.24	196.22	5,621.88	-660.86	-192.25	673.48	11.00	11.00	0.00	0.00
5,900.00	84.24	196.22	5,641.37	-754.89	-219.60	769.30	11.00	11.00	0.00	0.00
5,952.33	90.00	196.22	5,644.00	-805.05	-234.19	820.43	11.00	11.00	0.00	0.00
End Build @ 5952 ft - Niobrara "B" - 7" Casing Pt.										
6,000.00	90.00	196.22	5,644.00	-850.83	-247.51	867.07	0.00	0.00	0.00	0.00
6,027.33	90.00	196.22	5,644.00	-877.07	-255.14	893.81	0.00	0.00	0.00	0.00
Begin Turn @ 6027 ft - Turn Rate 3.00 °/100 ft										
6,100.00	90.00	194.04	5,644.00	-947.22	-274.11	965.19	3.00	0.00	-3.00	-90.00
6,200.00	90.00	191.04	5,644.00	-1,044.82	-295.82	1,064.16	3.00	0.00	-3.00	-90.00
6,300.00	90.00	188.04	5,644.00	-1,143.43	-312.39	1,163.73	3.00	0.00	-3.00	-90.00
6,400.00	90.00	185.04	5,644.00	-1,242.76	-323.78	1,263.64	3.00	0.00	-3.00	-90.00
6,500.00	90.00	182.04	5,644.00	-1,342.56	-329.95	1,363.62	3.00	0.00	-3.00	-90.00
6,567.85	90.00	180.00	5,644.00	-1,410.40	-331.16	1,431.36	3.00	0.00	-3.00	-90.00
Hold Inc 90.00°, Azi 180.00° - End Turn @ 6568 ft										
6,600.00	90.00	180.00	5,644.00	-1,442.55	-331.17	1,463.42	0.00	0.00	0.00	-90.00
6,700.00	90.00	180.00	5,644.00	-1,542.55	-331.17	1,563.13	0.00	0.00	0.00	0.00
6,800.00	90.00	180.00	5,644.00	-1,642.55	-331.18	1,662.85	0.00	0.00	0.00	0.00
6,900.00	90.00	180.00	5,644.00	-1,742.55	-331.19	1,762.56	0.00	0.00	0.00	0.00
7,000.00	90.00	180.00	5,644.00	-1,842.55	-331.20	1,862.28	0.00	0.00	0.00	0.00
7,100.00	90.00	180.00	5,644.00	-1,942.55	-331.20	1,961.99	0.00	0.00	0.00	0.00
7,200.00	90.00	180.00	5,644.00	-2,042.55	-331.21	2,061.71	0.00	0.00	0.00	0.00
7,300.00	90.00	180.00	5,644.00	-2,142.55	-331.22	2,161.43	0.00	0.00	0.00	0.00
7,400.00	90.00	180.00	5,644.00	-2,242.55	-331.23	2,261.14	0.00	0.00	0.00	0.00
7,500.00	90.00	180.00	5,644.00	-2,342.55	-331.23	2,360.86	0.00	0.00	0.00	0.00
7,600.00	90.00	180.00	5,644.00	-2,442.55	-331.24	2,460.57	0.00	0.00	0.00	0.00
7,700.00	90.00	180.00	5,644.00	-2,542.55	-331.25	2,560.29	0.00	0.00	0.00	0.00
7,800.00	90.00	180.00	5,644.00	-2,642.55	-331.26	2,660.00	0.00	0.00	0.00	0.00
7,900.00	90.00	180.00	5,644.00	-2,742.55	-331.26	2,759.72	0.00	0.00	0.00	0.00
8,000.00	90.00	180.00	5,644.00	-2,842.55	-331.27	2,859.44	0.00	0.00	0.00	0.00
8,100.00	90.00	180.00	5,644.00	-2,942.55	-331.28	2,959.15	0.00	0.00	0.00	0.00
8,200.00	90.00	180.00	5,644.00	-3,042.55	-331.29	3,058.87	0.00	0.00	0.00	0.00
8,300.00	90.00	180.00	5,644.00	-3,142.55	-331.29	3,158.58	0.00	0.00	0.00	0.00
8,400.00	90.00	180.00	5,644.00	-3,242.55	-331.30	3,258.30	0.00	0.00	0.00	0.00
8,500.00	90.00	180.00	5,644.00	-3,342.55	-331.31	3,358.01	0.00	0.00	0.00	0.00
8,600.00	90.00	180.00	5,644.00	-3,442.55	-331.32	3,457.73	0.00	0.00	0.00	0.00
8,700.00	90.00	180.00	5,644.00	-3,542.55	-331.32	3,557.45	0.00	0.00	0.00	0.00
8,800.00	90.00	180.00	5,644.00	-3,642.55	-331.33	3,657.16	0.00	0.00	0.00	0.00
8,900.00	90.00	180.00	5,644.00	-3,742.55	-331.34	3,756.88	0.00	0.00	0.00	0.00
9,000.00	90.00	180.00	5,644.00	-3,842.55	-331.35	3,856.59	0.00	0.00	0.00	0.00
9,100.00	90.00	180.00	5,644.00	-3,942.55	-331.35	3,956.31	0.00	0.00	0.00	0.00
9,200.00	90.00	180.00	5,644.00	-4,042.55	-331.36	4,056.02	0.00	0.00	0.00	0.00
9,300.00	90.00	180.00	5,644.00	-4,142.55	-331.37	4,155.74	0.00	0.00	0.00	0.00
9,400.00	90.00	180.00	5,644.00	-4,242.55	-331.38	4,255.46	0.00	0.00	0.00	0.00
9,500.00	90.00	180.00	5,644.00	-4,342.55	-331.38	4,355.17	0.00	0.00	0.00	0.00
9,538.59	90.00	180.00	5,644.00	-4,381.14	-331.39	4,393.65	0.00	0.00	0.00	0.00
Total Depth 9538.6 ft										
9,538.60	90.00	180.00	5,644.00	-4,381.14	-331.39	4,393.66	0.02	0.00	0.00	0.00

Plan Report for Razor #25B-2550 - Rev A0**Plan Annotations**

Measured Depth (usft)	Vertical Depth (usft)	Local Coordinates +N/-S (usft)	+E/-W (usft)	Comment
500.00	500.00	0.00	0.00	Begin Nudge @ 500.00 ft
700.00	699.84	-6.70	-1.95	End Nudge @ 700.00 ft
5,170.51	5,159.46	-306.14	-89.06	Build Rate 11.00 °/100 ft
5,170.51	5,159.46	-306.14	-89.06	Kick Off Point @ 5171 ft
5,952.33	5,644.00	-805.05	-234.19	End Build @ 5952 ft
6,027.33	5,644.00	-877.07	-255.14	Begin Turn @ 6027 ft
6,027.33	5,644.00	-877.07	-255.14	Turn Rate 3.00 °/100 ft
6,567.85	5,644.00	-1,410.40	-331.16	Hold Inc 90.00°, Azi 180.00°
6,567.85	5,644.00	-1,410.40	-331.16	End Turn @ 6568 ft
9,538.59	5,644.00	-4,381.14	-331.39	Total Depth 9538.6 ft

Vertical Section Information

Angle Type	Target	Azimuth (°)	Origin Type	Origin +N/_S (usft)	+E/-W (usft)	Start TVD (usft)
Target	Razor 25B-2550 Rev A0 Tgt	184.33	Slot	0.00	0.00	0.00

Survey tool program

From (usft)	To (usft)	Survey/Plan	Survey Tool
0.00	1,500.00	Rev A0	MWD+IFR1+MS+sag
1,500.00	5,952.33	Rev A0	MWD+IFR1+MS+sag
5,952.33	9,537.91	Rev A0	MWD+IFR1+MS+sag

Casing Details

Measured Depth (usft)	Vertical Depth (usft)	Name	Casing Diameter (")	Hole Diameter (")
1,502.12	1,500.00	9 5/8" Casing Pt.	9-5/8	13-1/2
5,952.33	5,644.00	7" Casing Pt.	7	8-3/4

Formation Details

Measured Depth (usft)	Vertical Depth (usft)	Name	Lithology	Dip (°)	Dip Direction (°)
5,604.32	5,532.00	Niobrara Top		0.00	
5,687.28	5,578.00	Niobrara "A"		0.00	
5,952.33	5,644.00	Niobrara "B"		0.00	

Targets associated with this wellbore

Target Name	TVD (usft)	+N/-S (usft)	+E/-W (usft)	Shape
Razor 25B Section 25 600' Setback	0.00	0.00	-30.17	Polygon
Razor 25B Section 25	0.00	0.01	-30.17	Polygon
Razor 25B Section 25 100' Setback	0.00	0.00	-30.17	Polygon
Razor 25B-2550 Rev A0 Tgt	5,644.00	-4,381.14	-331.39	Point

Plan Report for Razor #25B-2550 - Rev A0

Directional Difficulty Index

Average Dogleg over Survey:	1.11 °/100usft	Maximum Dogleg over Survey:	11.00 °/100usft at 5,952.33 usft
Net Tortousity applicable to Plans:	1.11 °/100usft	Directional Difficulty Index:	5.993

Audit Info

North Reference Sheet for Sec. 25-T10N-R58W - Razor #25B-2550 - Plan A

All data is in US Feet unless otherwise stated. Directions and Coordinates are relative to True North Reference.

Vertical Depths are relative to KB 22 ft @ 4778.40usft (Frontier 26). Northing and Easting are relative to Razor #25B-2550

Coordinate System is US State Plane 1983, Colorado Northern Zone using datum North American Datum 1983, ellipsoid GRS 1980

Projection method is Lambert Conformal Conic (2 parallel)

Central Meridian is -105.50°, Longitude Origin:0° 0' 0.000 E°, Latitude Origin:40° 47' 0.000 N°

False Easting: 3,000,000.00usft, False Northing: 1,000,000.00usft, Scale Reduction: 1.00000549

Grid Coordinates of Well: 1,544,619.46 usft N, 3,467,509.65 usft E

Geographical Coordinates of Well: 40° 48' 58.10" N, 103° 48' 39.32" W

Grid Convergence at Surface is: 1.09°

Based upon Minimum Curvature type calculations, at a Measured Depth of 9,538.60usft
the Bottom Hole Displacement is 4,393.66usft in the Direction of 184.33° (True).

Magnetic Convergence at surface is: -6.97° (9 December 2013, , BGGM2013)

