

Whiting Oil and Gas Corporation

Weld County, CO

Sec. 25-T10N-R58W

Razor #25B-2549

Plan A

Plan: Rev A0

Sperry Drilling Services

Proposal Report

16 December, 2013

Well Coordinates: 1,544,618.88 N, 3,467,479.48 E (40° 48' 58.10" N, 103° 48' 39.71" W)

Ground Level: 4,756.40 usft

Local Coordinate Origin:

Viewing Datum:

TVDs to System:

North Reference:

Unit System:

Geodetic Scale Factor Applied

Version: 5000.1 Build: 70

Centered on Well Razor #25B-2549

KB 22 ft @ 4778.40usft (Frontier 26)

N

True

API - US Survey Feet - Custom

HALLIBURTON

Project: Weld County, CO
Site: Sec. 25-T10N-R58W
Well: Razor #25B-2549
Wellbore: Plan A
Plan: Rev A0

Whiting Oil and Gas Corporation



SECTION DETAILS										
Sec	MD	Inc	Azi	TVD	+N/-S	+E/-W	Dleg	TFace	V Sect	Target
1	0.00	0.00	0.00	0.00	0.00	0.00	0.00	0.00	0.00	
2	500.00	0.00	0.00	500.00	0.00	0.00	0.00	0.00	0.00	
3	700.00	4.00	201.35	699.84	-6.50	-2.54	2.00	201.35	6.73	
4	5295.82	4.00	201.35	5284.46	-305.09	-119.26	0.00	0.00	316.00	
5	6077.64	90.00	201.35	5769.00	-789.03	-308.42	11.00	0.00	817.25	
6	6152.64	90.00	201.35	5769.00	-858.88	-335.73	0.00	0.00	889.60	
7	6864.32	90.00	180.00	5769.00	-1554.21	-466.79	3.00	-90.00	1594.90	
8	9693.43	90.00	180.00	5769.00	-4383.32	-466.77	0.00	0.00	4408.10	Razor 25B-2549 Rev A0 Tgt

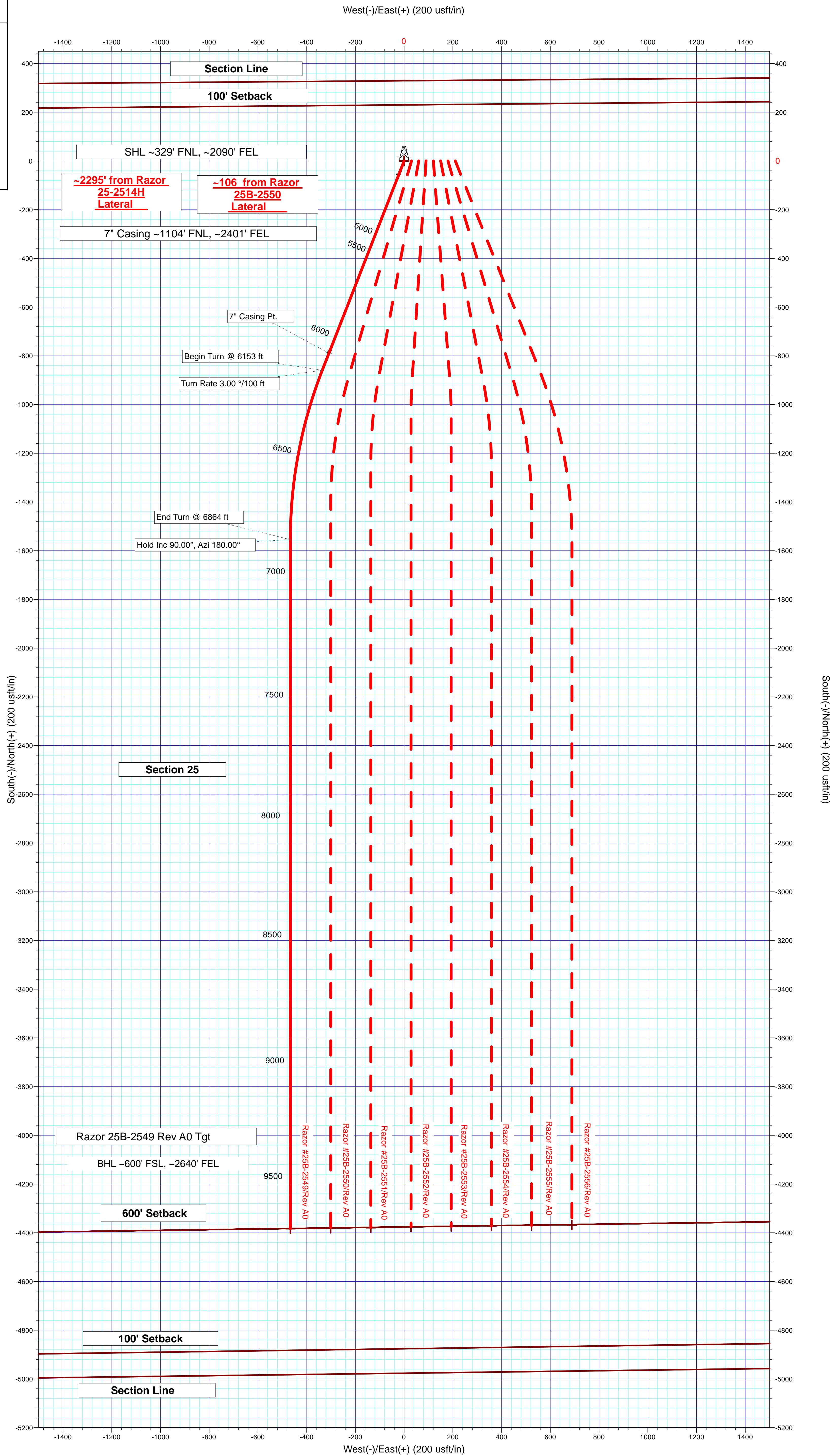
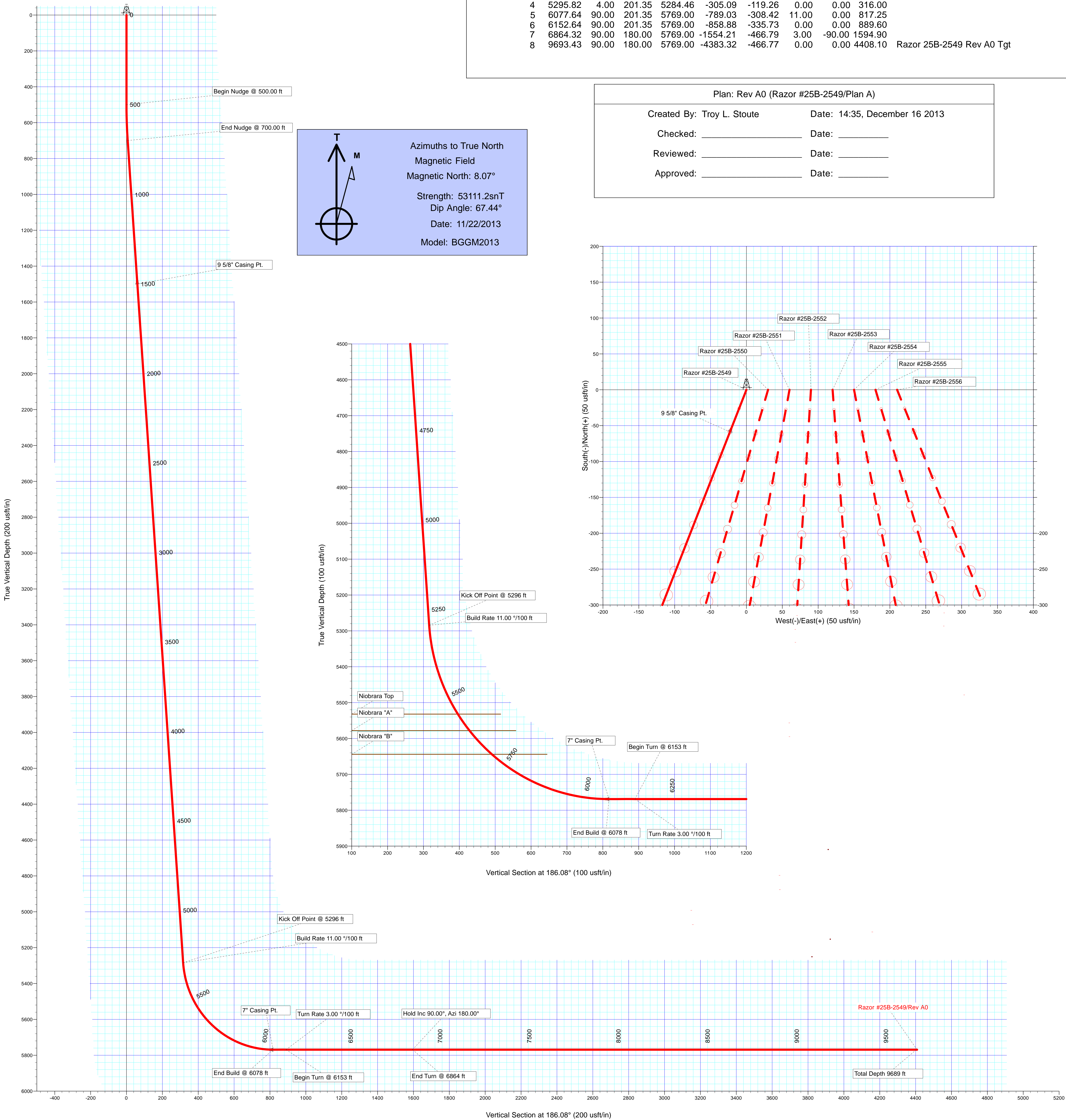
Plan: Rev A0 (Razor #25B-2549/Plan A)

Created By: Troy L. Stoute Date: 14:35, December 16 2013

Checked: _____ Date: _____

Reviewed: _____ Date: _____

Approved: _____ Date: _____



Plan Report for Razor #25B-2549 - Rev A0

Measured Depth (usft)	Inclination (°)	Azimuth (°)	Vertical Depth (usft)	+N/-S (usft)	+E/-W (usft)	Vertical Section (usft)	Dogleg Rate (°/100usft)	Build Rate (°/100usft)	Turn Rate (°/100usft)	Toolface Azimuth (°)
0.00	0.00	0.00	0.00	0.00	0.00	0.00	0.00	0.00	0.00	0.00
100.00	0.00	0.00	100.00	0.00	0.00	0.00	0.00	0.00	0.00	0.00
200.00	0.00	0.00	200.00	0.00	0.00	0.00	0.00	0.00	0.00	0.00
300.00	0.00	0.00	300.00	0.00	0.00	0.00	0.00	0.00	0.00	0.00
400.00	0.00	0.00	400.00	0.00	0.00	0.00	0.00	0.00	0.00	0.00
500.00	0.00	0.00	500.00	0.00	0.00	0.00	0.00	0.00	0.00	0.00
Begin Nudge @ 500.00 ft										
600.00	2.00	201.35	599.98	-1.63	-0.64	1.68	2.00	2.00	0.00	201.35
700.00	4.00	201.35	699.84	-6.50	-2.54	6.73	2.00	2.00	0.00	0.00
End Nudge @ 700.00 ft										
800.00	4.00	201.35	799.59	-13.00	-5.08	13.46	0.00	0.00	0.00	0.00
900.00	4.00	201.35	899.35	-19.49	-7.62	20.19	0.00	0.00	0.00	0.00
1,000.00	4.00	201.35	999.11	-25.99	-10.16	26.92	0.00	0.00	0.00	0.00
1,100.00	4.00	201.35	1,098.86	-32.49	-12.70	33.65	0.00	0.00	0.00	0.00
1,200.00	4.00	201.35	1,198.62	-38.98	-15.24	40.38	0.00	0.00	0.00	0.00
1,300.00	4.00	201.35	1,298.38	-45.48	-17.78	47.11	0.00	0.00	0.00	0.00
1,400.00	4.00	201.35	1,398.13	-51.98	-20.32	53.84	0.00	0.00	0.00	0.00
1,500.00	4.00	201.35	1,497.89	-58.48	-22.86	60.57	0.00	0.00	0.00	0.00
1,502.12	4.00	201.35	1,500.00	-58.61	-22.91	60.71	0.00	0.00	0.00	0.00
9 5/8" Casing Pt.										
1,600.00	4.00	201.35	1,597.65	-64.97	-25.40	67.30	0.00	0.00	0.00	0.00
1,700.00	4.00	201.35	1,697.40	-71.47	-27.94	74.03	0.00	0.00	0.00	0.00
1,800.00	4.00	201.35	1,797.16	-77.97	-30.48	80.75	0.00	0.00	0.00	0.00
1,900.00	4.00	201.35	1,896.91	-84.46	-33.02	87.48	0.00	0.00	0.00	0.00
2,000.00	4.00	201.35	1,996.67	-90.96	-35.56	94.21	0.00	0.00	0.00	0.00
2,100.00	4.00	201.35	2,096.43	-97.46	-38.09	100.94	0.00	0.00	0.00	0.00
2,200.00	4.00	201.35	2,196.18	-103.95	-40.63	107.67	0.00	0.00	0.00	0.00
2,300.00	4.00	201.35	2,295.94	-110.45	-43.17	114.40	0.00	0.00	0.00	0.00
2,400.00	4.00	201.35	2,395.70	-116.95	-45.71	121.13	0.00	0.00	0.00	0.00
2,500.00	4.00	201.35	2,495.45	-123.44	-48.25	127.86	0.00	0.00	0.00	0.00
2,600.00	4.00	201.35	2,595.21	-129.94	-50.79	134.59	0.00	0.00	0.00	0.00
2,700.00	4.00	201.35	2,694.97	-136.44	-53.33	141.32	0.00	0.00	0.00	0.00
2,800.00	4.00	201.35	2,794.72	-142.94	-55.87	148.05	0.00	0.00	0.00	0.00
2,900.00	4.00	201.35	2,894.48	-149.43	-58.41	154.78	0.00	0.00	0.00	0.00
3,000.00	4.00	201.35	2,994.23	-155.93	-60.95	161.51	0.00	0.00	0.00	0.00
3,100.00	4.00	201.35	3,093.99	-162.43	-63.49	168.24	0.00	0.00	0.00	0.00
3,200.00	4.00	201.35	3,193.75	-168.92	-66.03	174.97	0.00	0.00	0.00	0.00
3,300.00	4.00	201.35	3,293.50	-175.42	-68.57	181.69	0.00	0.00	0.00	0.00
3,400.00	4.00	201.35	3,393.26	-181.92	-71.11	188.42	0.00	0.00	0.00	0.00
3,500.00	4.00	201.35	3,493.02	-188.41	-73.65	195.15	0.00	0.00	0.00	0.00
3,600.00	4.00	201.35	3,592.77	-194.91	-76.19	201.88	0.00	0.00	0.00	0.00
3,700.00	4.00	201.35	3,692.53	-201.41	-78.73	208.61	0.00	0.00	0.00	0.00
3,800.00	4.00	201.35	3,792.29	-207.90	-81.27	215.34	0.00	0.00	0.00	0.00
3,900.00	4.00	201.35	3,892.04	-214.40	-83.81	222.07	0.00	0.00	0.00	0.00
4,000.00	4.00	201.35	3,991.80	-220.90	-86.35	228.80	0.00	0.00	0.00	0.00
4,100.00	4.00	201.35	4,091.56	-227.40	-88.89	235.53	0.00	0.00	0.00	0.00
4,200.00	4.00	201.35	4,191.31	-233.89	-91.43	242.26	0.00	0.00	0.00	0.00
4,300.00	4.00	201.35	4,291.07	-240.39	-93.97	248.99	0.00	0.00	0.00	0.00
4,400.00	4.00	201.35	4,390.82	-246.89	-96.51	255.72	0.00	0.00	0.00	0.00
4,500.00	4.00	201.35	4,490.58	-253.38	-99.04	262.45	0.00	0.00	0.00	0.00
4,600.00	4.00	201.35	4,590.34	-259.88	-101.58	269.18	0.00	0.00	0.00	0.00
4,700.00	4.00	201.35	4,690.09	-266.38	-104.12	275.90	0.00	0.00	0.00	0.00
4,800.00	4.00	201.35	4,789.85	-272.87	-106.66	282.63	0.00	0.00	0.00	0.00
4,900.00	4.00	201.35	4,889.61	-279.37	-109.20	289.36	0.00	0.00	0.00	0.00
5,000.00	4.00	201.35	4,989.36	-285.87	-111.74	296.09	0.00	0.00	0.00	0.00
5,100.00	4.00	201.35	5,089.12	-292.36	-114.28	302.82	0.00	0.00	0.00	0.00
5,200.00	4.00	201.35	5,188.88	-298.86	-116.82	309.55	0.00	0.00	0.00	0.00
5,295.82	4.00	201.35	5,284.46	-305.09	-119.26	316.00	0.00	0.00	0.00	0.00

Plan Report for Razor #25B-2549 - Rev A0

Measured Depth (usft)	Inclination (°)	Azimuth (°)	Vertical Depth (usft)	+N-S (usft)	+E-W (usft)	Vertical Section (usft)	Dogleg Rate (°/100usft)	Build Rate (°/100usft)	Turn Rate (°/100usft)	Toolface Azimuth (°)
Kick Off Point @ 5296 ft - Build Rate 11.00 °/100 ft										
5,300.00	4.46	201.35	5,288.63	-305.37	-119.37	316.30	11.01	11.01	0.00	0.00
5,400.00	15.46	201.35	5,386.97	-321.46	-125.65	332.96	11.00	11.00	0.00	0.00
5,500.00	26.46	201.35	5,480.21	-354.72	-138.66	367.41	11.00	11.00	0.00	0.00
5,559.68	33.02	201.35	5,532.00	-382.28	-149.43	395.96	11.00	11.00	0.00	0.00
Niobrara Top										
5,600.00	37.46	201.35	5,564.92	-403.95	-157.90	418.40	11.00	11.00	0.00	0.00
5,616.68	39.29	201.35	5,578.00	-413.59	-161.67	428.39	11.00	11.00	0.00	0.00
Niobrara "A"										
5,700.00	48.46	201.35	5,637.99	-467.32	-182.67	484.04	11.00	11.00	0.00	0.00
5,709.15	49.47	201.35	5,644.00	-473.75	-185.18	490.70	11.00	11.00	0.00	0.00
Niobrara "B"										
5,800.00	59.46	201.35	5,696.74	-542.52	-212.07	561.92	11.00	11.00	0.00	0.00
5,900.00	70.46	201.35	5,739.00	-626.77	-245.00	649.19	11.00	11.00	0.00	0.00
6,000.00	81.46	201.35	5,763.22	-716.99	-280.26	742.64	11.00	11.00	0.00	0.00
6,077.64	90.00	201.35	5,769.00	-789.03	-308.43	817.26	11.00	11.00	0.00	0.00
End Build @ 6078 ft - 7" Casing Pt.										
6,100.00	90.00	201.35	5,769.00	-809.86	-316.57	838.83	0.00	0.00	0.00	0.00
6,152.64	90.00	201.35	5,769.00	-858.89	-335.73	889.61	0.00	0.00	0.00	0.00
Begin Turn @ 6153 ft - Turn Rate 3.00 °/100 ft										
6,200.00	90.00	199.93	5,769.00	-903.21	-352.42	935.45	3.00	0.00	-3.00	-90.00
6,300.00	90.00	196.93	5,769.00	-998.07	-384.03	1,033.12	3.00	0.00	-3.00	-90.00
6,400.00	90.00	193.93	5,769.00	-1,094.45	-410.63	1,131.78	3.00	0.00	-3.00	-90.00
6,500.00	90.00	190.93	5,769.00	-1,192.10	-432.15	1,231.16	3.00	0.00	-3.00	-90.00
6,600.00	90.00	187.93	5,769.00	-1,290.74	-448.54	1,330.97	3.00	0.00	-3.00	-90.00
6,700.00	90.00	184.93	5,769.00	-1,390.10	-459.73	1,430.96	3.00	0.00	-3.00	-90.00
6,800.00	90.00	181.93	5,769.00	-1,489.90	-465.71	1,530.84	3.00	0.00	-3.00	-90.00
6,864.32	90.00	180.00	5,769.00	-1,554.21	-466.79	1,594.90	3.00	0.00	-3.00	-90.00
End Turn @ 6864 ft - Hold Inc 90.00°, Azi 180.00°										
6,900.00	90.00	180.00	5,769.00	-1,589.89	-466.79	1,630.38	0.00	0.00	0.00	-90.00
7,000.00	90.00	180.00	5,769.00	-1,689.89	-466.79	1,729.82	0.00	0.00	0.00	0.00
7,100.00	90.00	180.00	5,769.00	-1,789.89	-466.79	1,829.26	0.00	0.00	0.00	0.00
7,200.00	90.00	180.00	5,769.00	-1,889.89	-466.79	1,928.70	0.00	0.00	0.00	0.00
7,300.00	90.00	180.00	5,769.00	-1,989.89	-466.79	2,028.13	0.00	0.00	0.00	0.00
7,400.00	90.00	180.00	5,769.00	-2,089.89	-466.79	2,127.57	0.00	0.00	0.00	0.00
7,500.00	90.00	180.00	5,769.00	-2,189.89	-466.79	2,227.01	0.00	0.00	0.00	0.00
7,600.00	90.00	180.00	5,769.00	-2,289.89	-466.79	2,326.45	0.00	0.00	0.00	0.00
7,700.00	90.00	180.00	5,769.00	-2,389.89	-466.79	2,425.88	0.00	0.00	0.00	0.00
7,800.00	90.00	180.00	5,769.00	-2,489.89	-466.79	2,525.32	0.00	0.00	0.00	0.00
7,900.00	90.00	180.00	5,769.00	-2,589.89	-466.78	2,624.76	0.00	0.00	0.00	0.00
8,000.00	90.00	180.00	5,769.00	-2,689.89	-466.78	2,724.20	0.00	0.00	0.00	0.00
8,100.00	90.00	180.00	5,769.00	-2,789.89	-466.78	2,823.63	0.00	0.00	0.00	0.00
8,200.00	90.00	180.00	5,769.00	-2,889.89	-466.78	2,923.07	0.00	0.00	0.00	0.00
8,300.00	90.00	180.00	5,769.00	-2,989.89	-466.78	3,022.51	0.00	0.00	0.00	0.00
8,400.00	90.00	180.00	5,769.00	-3,089.89	-466.78	3,121.95	0.00	0.00	0.00	0.00
8,500.00	90.00	180.00	5,769.00	-3,189.89	-466.78	3,221.39	0.00	0.00	0.00	0.00
8,600.00	90.00	180.00	5,769.00	-3,289.89	-466.78	3,320.82	0.00	0.00	0.00	0.00
8,700.00	90.00	180.00	5,769.00	-3,389.89	-466.78	3,420.26	0.00	0.00	0.00	0.00
8,800.00	90.00	180.00	5,769.00	-3,489.89	-466.78	3,519.70	0.00	0.00	0.00	0.00
8,900.00	90.00	180.00	5,769.00	-3,589.89	-466.77	3,619.14	0.00	0.00	0.00	0.00
9,000.00	90.00	180.00	5,769.00	-3,689.89	-466.77	3,718.57	0.00	0.00	0.00	0.00
9,100.00	90.00	180.00	5,769.00	-3,789.89	-466.77	3,818.01	0.00	0.00	0.00	0.00
9,200.00	90.00	180.00	5,769.00	-3,889.89	-466.77	3,917.45	0.00	0.00	0.00	0.00
9,300.00	90.00	180.00	5,769.00	-3,989.89	-466.77	4,016.89	0.00	0.00	0.00	0.00
9,400.00	90.00	180.00	5,769.00	-4,089.89	-466.77	4,116.32	0.00	0.00	0.00	0.00
9,500.00	90.00	180.00	5,769.00	-4,189.89	-466.77	4,215.76	0.00	0.00	0.00	0.00
9,600.00	90.00	180.00	5,769.00	-4,289.89	-466.77	4,315.20	0.00	0.00	0.00	0.00
9,689.36	90.00	180.00	5,769.00	-4,379.25	-466.77	4,404.06	0.00	0.00	0.00	0.00

Plan Report for Razor #25B-2549 - Rev A0

Measured Depth (usft)	Inclination (°)	Azimuth (°)	Vertical Depth (usft)	+N/-S (usft)	+E/-W (usft)	Vertical Section (usft)	Dogleg Rate (°/100usft)	Build Rate (°/100usft)	Turn Rate (°/100usft)	Toolface Azimuth (°)
Total Depth 9689 ft										
9,693.43	90.00	180.00	5,769.00	-4,383.32	-466.77	4,408.10	0.00	0.00	0.00	0.00

Plan Annotations

Measured Depth (usft)	Vertical Depth (usft)	Local Coordinates		Comment
		+N/-S (usft)	+E/-W (usft)	
500.00	500.00	0.00	0.00	Begin Nudge @ 500.00 ft
700.00	699.84	-6.50	-2.54	End Nudge @ 700.00 ft
5,295.82	5,284.46	-305.09	-119.26	Kick Off Point @ 5296 ft
5,295.82	5,284.46	-305.09	-119.26	Build Rate 11.00 °/100 ft
6,077.64	5,769.00	-789.03	-308.43	End Build @ 6078 ft
6,152.64	5,769.00	-858.89	-335.73	Begin Turn @ 6153 ft
6,152.64	5,769.00	-858.89	-335.73	Turn Rate 3.00 °/100 ft
6,864.32	5,769.00	-1,554.21	-466.79	End Turn @ 6864 ft
6,864.32	5,769.00	-1,554.21	-466.79	Hold Inc 90.00°, Azi 180.00°
9,689.36	5,769.00	-4,379.25	-466.77	Total Depth 9689 ft

Vertical Section Information

Angle Type	Target	Azimuth (°)	Origin Type	Origin		Start TVD (usft)
				+N/-S (usft)	+E/-W (usft)	
Target	Razor 25B-2549 Rev A0 Tgt	186.08	Slot	0.00	0.00	0.00

Survey tool program

From (usft)	To (usft)	Survey/Plan	Survey Tool
0.00	1,500.00	Rev A0	MWD+IFR1+MS+sag
1,500.00	6,077.64	Rev A0	MWD+IFR1+MS+sag
6,077.64	9,693.02	Rev A0	MWD+IFR1+MS+sag

Casing Details

Measured Depth (usft)	Vertical Depth (usft)	Name	Casing Diameter (")	Hole Diameter (")
1,502.12	1,500.00	9 5/8" Casing Pt.	9-5/8	13-1/2
6,077.64	5,769.00	7" Casing Pt.	7	8-3/4

Formation Details

Measured Depth (usft)	Vertical Depth (usft)	Name	Lithology	Dip (°)	Dip Direction (°)
5,559.68	5,532.00	Niobrara Top		0.00	
5,616.68	5,578.00	Niobrara "A"		0.00	
5,709.15	5,644.00	Niobrara "B"		0.00	

Plan Report for Razor #25B-2549 - Rev A0

Targets associated with this wellbore

Target Name	TVD (usft)	+N/-S (usft)	+E/-W (usft)	Shape
Razor 25B Section 25 600' Setback	0.00	0.00	0.00	Polygon
Razor 25B Section 25	0.00	0.01	0.00	Polygon
Razor 25B Section 25 100' Setback	0.00	0.00	0.00	Polygon
Razor 25B-2549 Rev A0 Tgt	5,769.00	-4,383.32	-466.77	Point

Directional Difficulty Index

Average Dogleg over Survey:	1.15 °/100usft	Maximum Dogleg over Survey:	11.00 °/100usft at 6,077.64 usft
Net Tortousity applicable to Plans:	1.15 °/100usft	Directional Difficulty Index:	6.055

Audit Info

North Reference Sheet for Sec. 25-T10N-R58W - Razor #25B-2549 - Plan A

All data is in US Feet unless otherwise stated. Directions and Coordinates are relative to True North Reference.

Vertical Depths are relative to KB 22 ft @ 4778.40usft (Frontier 26). Northing and Easting are relative to Razor #25B-2549

Coordinate System is US State Plane 1983, Colorado Northern Zone using datum North American Datum 1983, ellipsoid GRS 1980

Projection method is Lambert Conformal Conic (2 parallel)

Central Meridian is -105.50°, Longitude Origin:0° 0' 0.000 E°, Latitude Origin:40° 47' 0.000 N°

False Easting: 3,000,000.00usft, False Northing: 1,000,000.00usft, Scale Reduction: 1.00000549

Grid Coordinates of Well: 1,544,618.88 usft N, 3,467,479.48 usft E

Geographical Coordinates of Well: 40° 48' 58.10" N, 103° 48' 39.71" W

Grid Convergence at Surface is: 1.09°

Based upon Minimum Curvature type calculations, at a Measured Depth of 9,693.43usft
the Bottom Hole Displacement is 4,408.10usft in the Direction of 186.08° (True).

Magnetic Convergence at surface is: -6.98° (22 November 2013, , BGGM2013)

