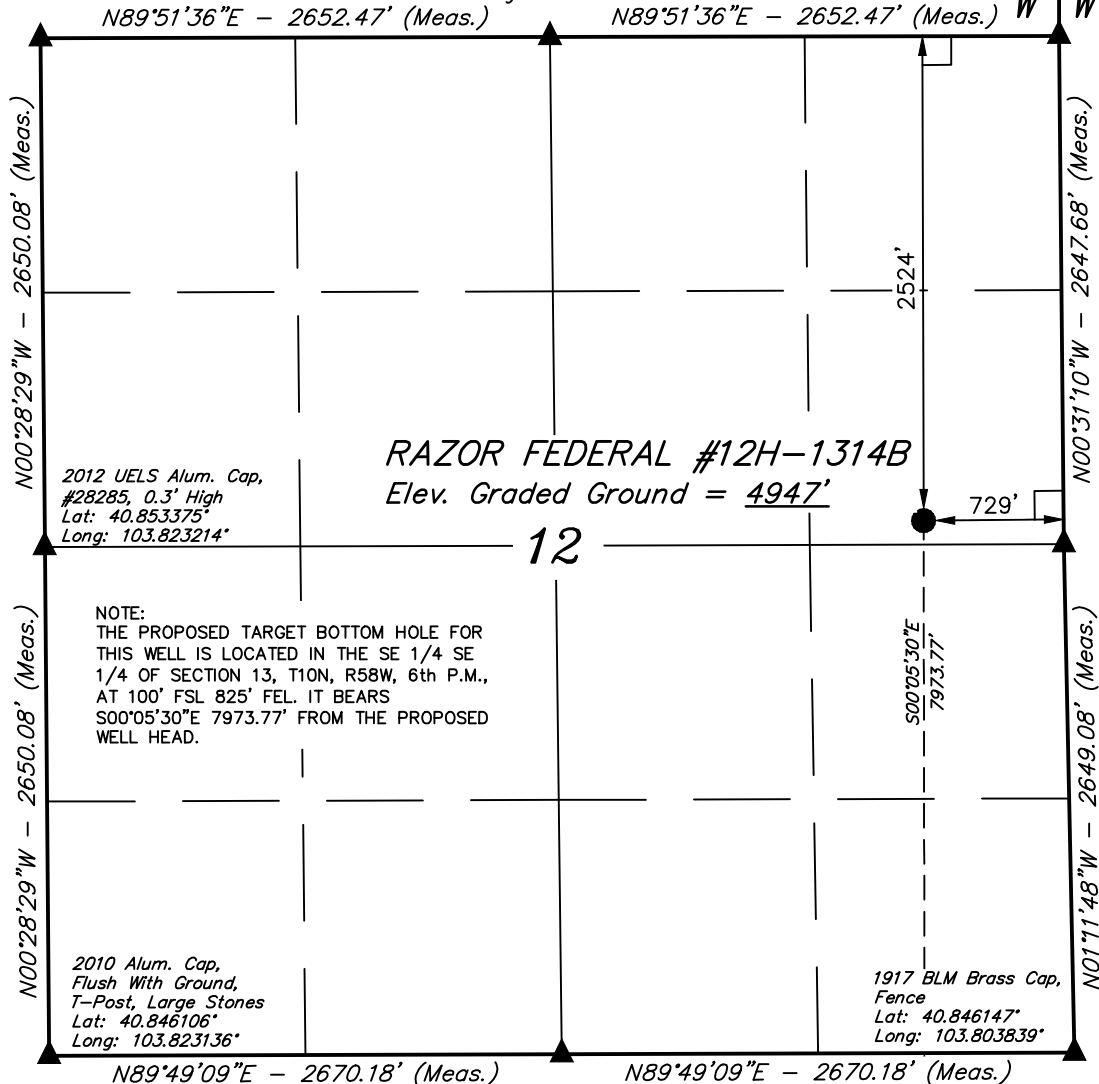


T10N, R58W, 6th P.M.

2012 UELS Alum. Cap,
#28285, 0.3' High
Lat: 40.860647°
Long: 103.823292°

2012 UELS Alum. Cap,
#28285, 0.3' High
Lat: 40.860664°
Long: 103.813706°

2006 Private Alum.
Cap, #24949,
0.6' Below Ground
Lat: 40.860678°
Long: 103.804117°



LEGEND:

- └─┘ = 90° SYMBOL
- = PROPOSED WELL HEAD.
- ▲ = SECTION CORNERS LOCATED.

WHITING OIL & GAS CORP.

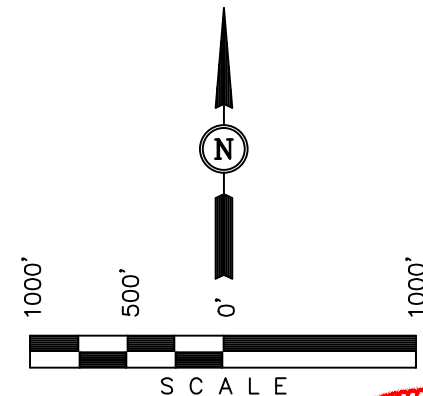
Well location, RAZOR FEDERAL #12H-1314B
(SURFACE LOCATION), located as shown in the SE
1/4 NE 1/4 of Section 12, T10N, R58W, 6th P.M.,
Weld County, Colorado.

BASIS OF ELEVATION

SPOT ELEVATION LOCATED AT THE NORTHEAST CORNER OF
SECTION 15, T9N, R58W, 6th P.M. TAKEN FROM THE
GATEHOOK SPRING, QUADRANGLE, COLORADO, WELD COUNTY,
7.5 MINUTE QUAD (TOPOGRAPHIC MAP) PUBLISHED BY THE
UNITED STATES DEPARTMENT OF THE INTERIOR, GEOLOGICAL
SURVEY. SAID ELEVATION IS MARKED AS BEING 4679 FEET.

BASIS OF BEARINGS

BASIS OF BEARINGS IS A G.P.S. OBSERVATION.



CERTIFICATION

THIS IS TO CERTIFY THAT THE ABOVE PLAT WAS PREPARED FROM
FIELD NOTES OF ACTUAL SURVEYS MADE BY ME OR UNDER MY
SUPERVISION AND THAT THE SAME ARE TRUE AND CORRECT TO THE
BEST OF MY KNOWLEDGE AND BELIEF.

REGISTERED LAND SURVEYOR
REGISTRATION NO. 28285
STATE OF COLORADO

REVISED: 07-12-13

UINTAH ENGINEERING & LAND SURVEYING
85 SOUTH 200 EAST - VERNAL, UTAH 84078
(435) 789-1017

SCALE 1" = 1000'	DATE SURVEYED: 05-10-13	DATE DRAWN: 05-15-13
PARTY J.H. C.M. A.D.	REFERENCES G.L.O. PLAT	
WEATHER WARM	FILE WHITING OIL & GAS CORP.	

NAD 83 (SURFACE LOCATION)
LATITUDE = 40°51'13.50" (40.853750)
LONGITUDE = 103°48'24.02" (103.806672)
NAD 27 (SURFACE LOCATION)
LATITUDE = 40°51'13.55" (40.853764)
LONGITUDE = 103°48'22.22" (103.806172)

2010 Alum. Cap,
Flush With Ground,
T-Post, Large Stones
Lat: 40.846106°
Long: 103.823136°

T10N, R58W, 6th P.M.

2012 UELS Alum. Cap,
#28285, 0.3' High
Lat: 40.846125°
Long: 103.813489°

Surface
Location

R 58
R 57
W W

N89°49'09"E - 2670.18' (Meas.)

N89°49'09"E - 2670.18' (Meas.)

1917 BLM Brass Cap,
Fence
Lat: 40.846147°
Long: 103.803839°

N00°29'00"W - 2702.18' (Meas.)

N00°29'09"W - 2602.93' (Meas.)

2010 UELS Alum. Cap,
0.2' High, Buried Stone
Lat: 40.838689°
Long: 103.823056°

NOTE:
THE PROPOSED TARGET BOTTOM HOLE
BEARS S00°05'30"E 7973.77' FROM THE
PROPOSED WELL HEAD WHICH IS LOCATED IN
THE SE 1/4 NE 1/4 OF SECTION 12, T10N,
R58W, 6th P.M., AT 2524' FNL 729' FEL.

13

S00°05'30"E
7973.77'

N00°34'46"W - 2648.97' (Meas.)

N00°34'39"W - 2650.92' (Meas.)

2012 UELS Alum. Cap,
#28285, 0.1' High
Lat: 40.838878°
Long: 103.803747°

RAZOR FEDERAL #12H-1314B
Target Bottom Hole

Set Stone
Lat: 40.831547°
Long: 103.822978°

2012 UELS Alum. Cap, 2674.52' (Meas.)
#28285, 0.3' High
Lat: 40.831575°
Long: 103.813317°

N89°45'45"E - 2674.52' (Meas.)

N89°45'45"E

2011 UELS Alum. Cap,
0.6' Below Ground
Lat: 40.831603°
Long: 103.803653°

WHITING OIL & GAS CORP.

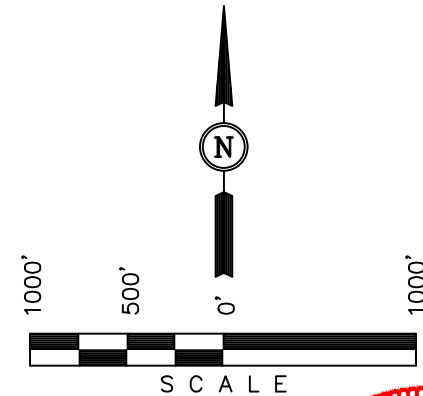
Well location, RAZOR FEDERAL #12H-1314B
(TARGET BOTTOM HOLE), located as shown in the
SE 1/4 SE 1/4 of Section 13, T10N, R58W, 6th
P.M., Weld County, Colorado.

BASIS OF ELEVATION

SPOT ELEVATION LOCATED AT THE NORTHEAST CORNER OF
SECTION 15, T9N, R58W, 6th P.M. TAKEN FROM THE
GATEHOOK SPRING, QUADRANGLE, COLORADO, WELD COUNTY,
7.5 MINUTE QUAD (TOPOGRAPHIC MAP) PUBLISHED BY THE
UNITED STATES DEPARTMENT OF THE INTERIOR, GEOLOGICAL
SURVEY. SAID ELEVATION IS MARKED AS BEING 4679 FEET.

BASIS OF BEARINGS

BASIS OF BEARINGS IS A G.P.S. OBSERVATION.



CERTIFICATION

THIS IS TO CERTIFY THAT THE ABOVE PLAT WAS PREPARED FROM
FIELD NOTES OF ACTUAL SURVEYS MADE BY ME OR UNDER MY
SUPERVISION AND THAT THE SAME ARE TRUE AND CORRECT TO THE
BEST OF MY KNOWLEDGE AND BELIEF.

REGISTERED LAND SURVEYOR
REGISTRATION NO. 28285
STATE OF COLORADO

UINTAH ENGINEERING & LAND SURVEYING
85 SOUTH 200 EAST - VERNAL, UTAH 84078
(435) 789-1017

LEGEND:

- └─┘ = 90° SYMBOL
- = PROPOSED WELL HEAD.
- ▲ = SECTION CORNERS LOCATED.

NAD 83 (TARGET BOTTOM HOLE)	
LATITUDE	= 40°49'54.73" (40.831869)
LONGITUDE	= 103°48'23.90" (103.806639)
NAD 27 (TARGET BOTTOM HOLE)	
LATITUDE	= 40°49'54.78" (40.831883)
LONGITUDE	= 103°48'22.09" (103.806136)

SCALE 1" = 1000'	DATE SURVEYED: 05-10-13	DATE DRAWN: 05-15-13
PARTY J.H. C.M. A.D.	REFERENCES G.L.O. PLAT	
WEATHER WARM	FILE WHITING OIL & GAS CORP.	