

WHITING OIL & GAS CORP.

2012 UELS Alum. Cap,  
#28285, 0.3' High  
Lat: 40.860647°  
Long: 103.823292°

2012 UELS Alum. Cap,  
#28285, 0.3' High  
Lat: 40.860664°  
Long: 103.813706°

2006 Private Alum.  
Cap, #24949,  
0.6' Below Ground  
Lat: 40.860678°  
Long: 103.804117°

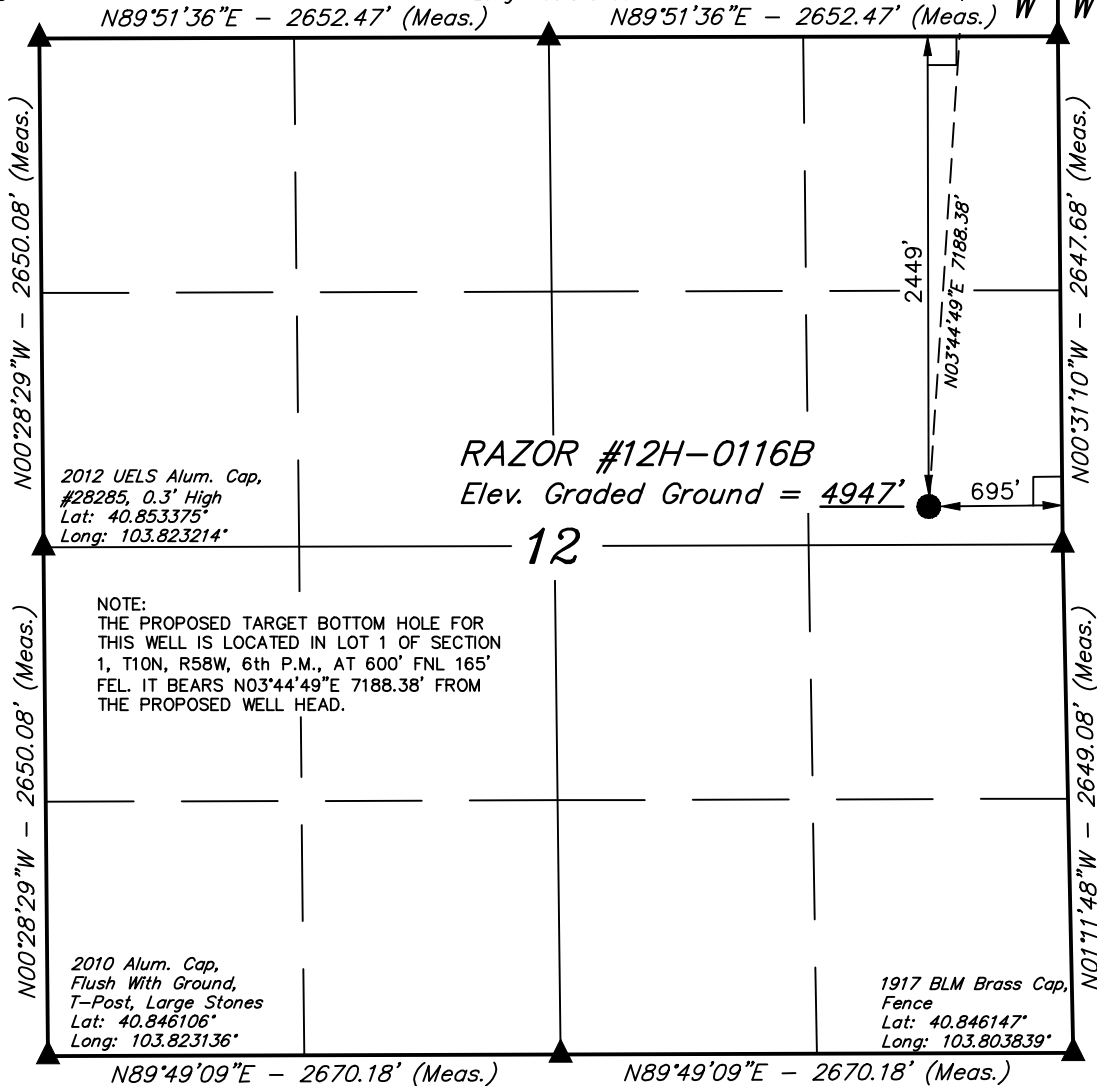
Well location, RAZOR #12H-0116B (SURFACE LOCATION), located as shown in the SE 1/4 NE 1/4 of Section 12, T10N, R58W, 6th P.M., Weld County, Colorado.

## BASIS OF ELEVATION

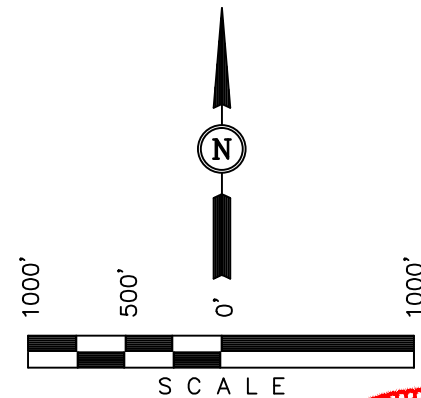
SPOT ELEVATION LOCATED AT THE NORTHEAST CORNER OF SECTION 15, T9N, R58W, 6th P.M. TAKEN FROM THE GATEHOOK SPRING, QUADRANGLE, COLORADO, WELD COUNTY, 7.5 MINUTE QUAD (TOPOGRAPHIC MAP) PUBLISHED BY THE UNITED STATES DEPARTMENT OF THE INTERIOR, GEOLOGICAL SURVEY. SAID ELEVATION IS MARKED AS BEING 4679 FEET.

## BASIS OF BEARINGS

BASIS OF BEARINGS IS A G.P.S. OBSERVATION.



2006 Private Alum.  
Cap, #24949,  
0.6' Below Ground  
Lat: 40.853414°  
Long: 103.804036°



CERTIFICATE

THIS IS TO CERTIFY THAT THE ABOVE PLAT WAS PREPARED FROM  
FIELD NOTES OF ACTUAL SURVEYS MADE BY ME OR UNDER MY  
SUPERVISION AND THAT THE SAME ARE TRUE AND CORRECT TO THE  
BEST OF MY KNOWLEDGE AND BELIEF

REGISTERED LAND SURVEYOR  
REGISTRATION NO. 28285  
STATE OF COLORADO  
05-12-13


REVISÉD: 07-12-13

# UINTAH ENGINEERING & LAND SURVEYING

85 SOUTH 200 EAST - VERNAL, UTAH 84078

(435) 789-1017

LEGEND:

 = 90° SYMBOL

● = PROPOSED WELL HEAD.

▲ = SECTION CORNERS LOCATED.

2012 UELS Alum. Cap,  
#28285, 0.3' High  
Lat: 40.846125°  
Long: 103.813489°

PDOP = 1.3

NAD 83 (SURFACE LOCATION)

LATITUDE = 40°51'14.24" (40.853956)  
LONGITUDE = 103°48'23.59" (103.806553)

NAD 27 (SURFACE LOCATION)
---------------------------

LATITUDE = 40°51'14.29" (40.853969)  
LONGITUDE = 103°48'21.79" (103.806053)

SCALE  
1" = 1000'

PARTY	J.H.	C.M.	A.D.
1) ...			
2) ...			
3) ...			
4) ...			
5) ...			
6) ...			
7) ...			
8) ...			
9) ...			
10) ...			
11) ...			
12) ...			
13) ...			
14) ...			
15) ...			
16) ...			
17) ...			
18) ...			
19) ...			
20) ...			
21) ...			
22) ...			
23) ...			
24) ...			
25) ...			
26) ...			
27) ...			
28) ...			
29) ...			
30) ...			
31) ...			
32) ...			
33) ...			
34) ...			
35) ...			
36) ...			
37) ...			
38) ...			
39) ...			
40) ...			
41) ...			
42) ...			
43) ...			
44) ...			
45) ...			
46) ...			
47) ...			
48) ...			
49) ...			
50) ...			
51) ...			
52) ...			
53) ...			
54) ...			
55) ...			
56) ...			
57) ...			
58) ...			
59) ...			
60) ...			
61) ...			
62) ...			
63) ...			
64) ...			
65) ...			
66) ...			
67) ...			
68) ...			
69) ...			
70) ...			
71) ...			
72) ...			
73) ...			
74) ...			
75) ...			
76) ...			
77) ...			
78) ...			
79) ...			
80) ...			
81) ...			
82) ...			
83) ...			
84) ...			
85) ...			
86) ...			
87) ...			
88) ...			
89) ...			
90) ...			
91) ...			
92) ...			
93) ...			
94) ...			
95) ...			
96) ...			
97) ...			
98) ...			
99) ...			
100) ...			

WEATHER
---------

WARM

DATE SURVEYED:	05-10-13
----------------	----------

REFERENCES	G.L.O. PLAT
------------	-------------

	FILE
--	------

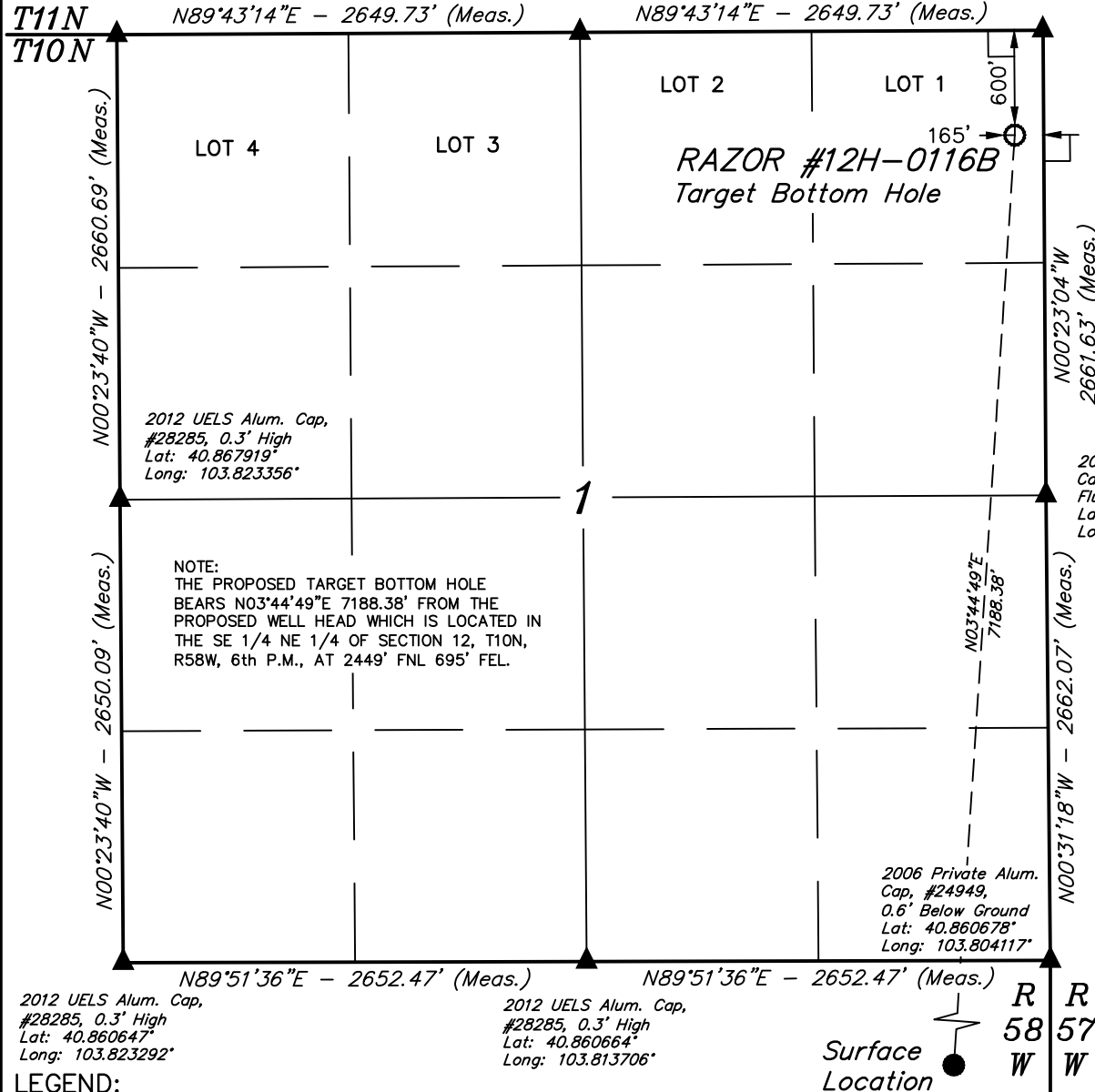
WHITING OIL &amp; GAS CORP.

T10N, R58W, 6th P.M.

2012 UELS Alum. Cap,  
#28285, 0.3' High  
Lat: 40.875219°  
Long: 103.823419°

2012 UELS Alum. Cap,  
#28285, 0.3' High  
Lat: 40.875256°  
Long: 103.813842°

1917 BLM Brass Cap,  
0.5' High, N-W Fence  
Lat: 40.875286°  
Long: 103.804261°



# LEGEND:

- └─┘ = 90° SYMBOL
- = PROPOSED WELL HEAD.
- ▲ = SECTION CORNERS LOCATED.

<b>NAD 83 (TARGET BOTTOM HOLE)</b>
LATITUDE = 40°52'25.10" (40.873639)
LONGITUDE = 103°48'17.44" (103.804844)
<b>NAD 27 (TARGET BOTTOM HOLE)</b>
LATITUDE = 40°52'25.15" (40.873653)
LONGITUDE = 103°48'15.64" (103.804344)

WHITING OIL & GAS CORP.

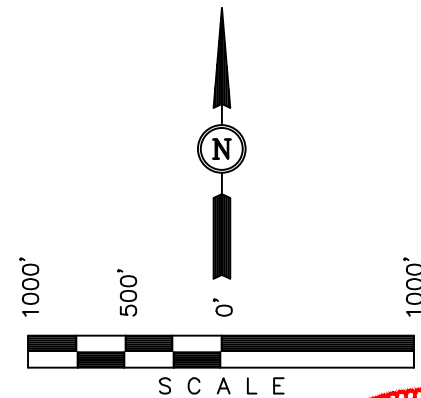
Well location, RAZOR #12H-0116B (TARGET BOTTOM HOLE), located as shown in LOT 1 of Section 1, T10N, R58W, 6th P.M., Weld County, Colorado.

## BASIS OF ELEVATION

SPOT ELEVATION LOCATED AT THE NORTHEAST CORNER OF SECTION 15, T9N, R58W, 6th P.M. TAKEN FROM THE GATEHOOK SPRING, QUADRANGLE, COLORADO, WELD COUNTY, 7.5 MINUTE QUAD (TOPOGRAPHIC MAP) PUBLISHED BY THE UNITED STATES DEPARTMENT OF THE INTERIOR, GEOLOGICAL SURVEY. SAID ELEVATION IS MARKED AS BEING 4679 FEET.

## BASIS OF BEARINGS

BASIS OF BEARINGS IS A G.P.S. OBSERVATION.



## CERTIFICATION

THIS IS TO CERTIFY THAT THE ABOVE PLAT WAS PREPARED FROM FIELD NOTES OF ACTUAL SURVEYS MADE BY ME OR UNDER MY SUPERVISION AND THAT THE SAME ARE TRUE AND CORRECT TO THE BEST OF MY KNOWLEDGE AND BELIEF.

REGISTERED LAND SURVEYOR  
REGISTRATION NO. 28285  
STATE OF COLORADO

REVISED: 07-12-13

**UINTAH ENGINEERING & LAND SURVEYING**  
85 SOUTH 200 EAST - VERNAL, UTAH 84078  
(435) 789-1017

SCALE 1" = 1000'	DATE SURVEYED: 05-10-13	DATE DRAWN: 05-15-13
PARTY J.H. C.M. A.D.	REFERENCES G.L.O. PLAT	
WEATHER WARM	FILE WHITING OIL & GAS CORP.	