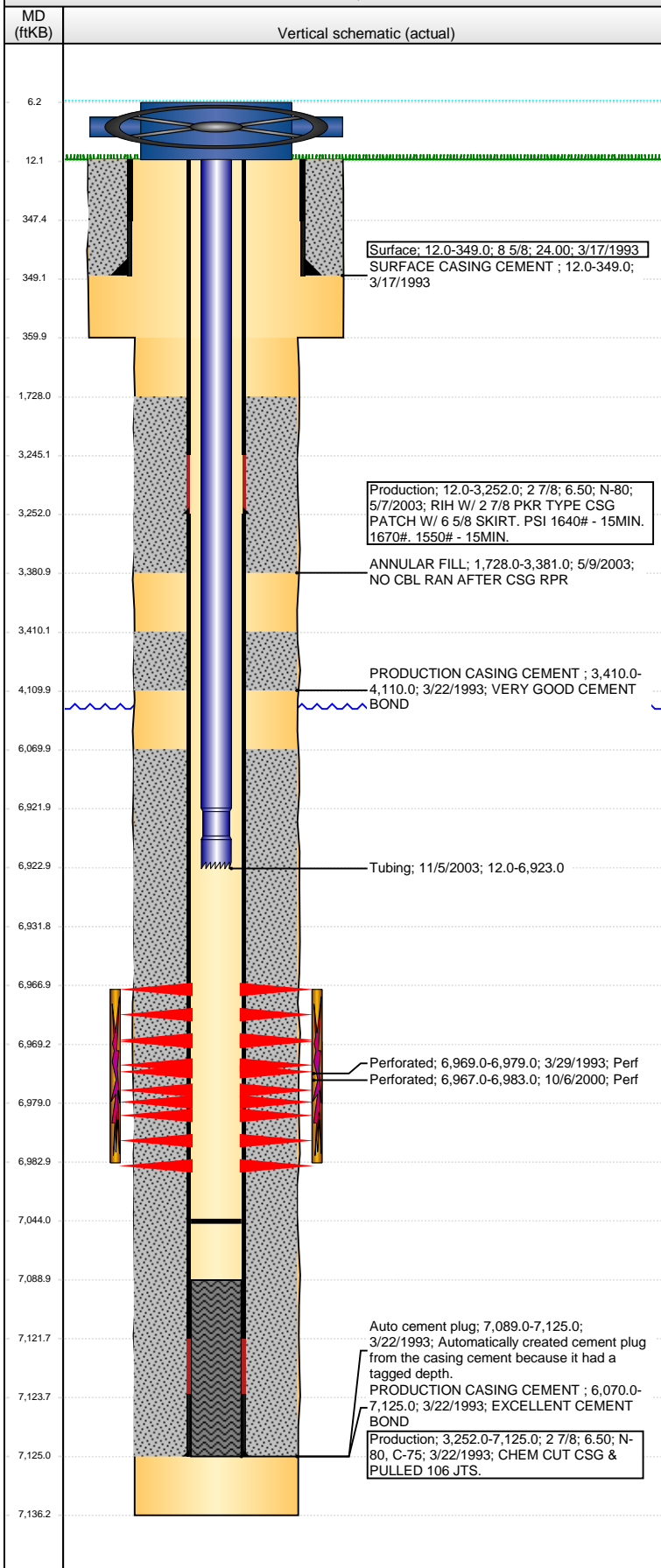


**Well Name: ANDERSON E24-12**

VERTICAL - ORIGINAL HOLE, 2/20/2014 10:09:24 AM



## Well Header

API 05-123-16841	Business Unit WATTENBERG	District 15	Well Config VERTICAL
Original KB Elevation (ft) 4,708.00	KB - GL / MSL (ftKB) 12.00	Spud Date 3/17/1993	P & A Date

**Comment**  
TD DISCREPANCY: DRILLING RPTS STATE 7128', OPEN HOLE LOG HAS 7136'

CSG REPAIR 5/03, CSG PATCH SET @ 3246'

Directions To Well

## Congressional Location

Quarter 1	Quarter 2	Quarter 3	Quarter 4	Section	Township	Twnshp N...	Range	Rng E/W Dir
		NW	SW	24	6	N	65	W

## Bottom Hole Location

North-South Distance (ft)	From N or S Line	East-West Distance (ft)	From E or W Line

## Plug Back Total Depths

Date	Depth (ftKB)	Method	Com
3/22/1993	7,121.0	CASING TALLY	SHOE WITH BAFFLE
3/29/1993	7,089.0	CASED HOLE LOG	DEPTH LOGGER FROM CBL
11/5/2003	7,044.0	TAG	CLEAN OUT & LAND TBG

## Wellbore Sections

Section Des	Size (in)	Act Top, MD (ftKB)	Act Btm, MD (ftKB)
SURFACE	12 1/4	12.0	360.0
PRODUCTION	7 7/8	360.0	7,136.0

## Zone Statuses

Zone Name	Status Date	Status	Job
CODELL	4/27/1993	PR	DRILLING/COMPLETION - ORIGINAL, 3/17/1993 00:00
CODELL	11/7/2003	PR	RE-FRAC, 10/2/2003 00:00

## Casing Strings

### Surface, 349.0ftKB

Casing Description	Run Date	OD (in)	Wt/Len (l...)	Grade	Top, MD (ft...)	MD (ftKB)
Surface	3/17/1993	8 5/8	24.00		12.0	349.0

### Production, 3,252.0ftKB

Casing Description	Run Date	OD (in)	Wt/Len (l...)	Grade	Top, MD (ft...)	MD (ftKB)
Production	5/7/2003	2 7/8	6.50	N-80	12.0	3,252.0

### Production, 7,125.0ftKB

Casing Description	Run Date	OD (in)	Wt/Len (l...)	Grade	Top, MD (ft...)	MD (ftKB)
Production	3/22/1993	2 7/8	6.50	C-75	12.0	7,125.0

## Cement

Description	Top Depth (ftKB)	Bottom Depth (ftKB)
SURFACE CASING CEMENT	12.0	349.0
PRODUCTION CASING CEMENT	3,410.0	4,110.0
PRODUCTION CASING CEMENT	6,070.0	7,125.0
ANNULAR FILL	1,728.0	3,381.0

## Tubing Components

Item Des	OD (in)	Wt (lb/ft)	Grade	Jts	Len (ft)	Btm (ftKB)	Btm (TVD) (ftKB)
Poly-Tubing	1 1/2	2.76	?	217	6,909.80	6,921.8	
Notched collar	1 1/2				1.20	6,923.0	

## Perforation Data

Zone	Bnch/St g	Entered Shot Total	Top (ftKB)	Btm (ftKB)	Date
CODELL, <idrecwellbore>		64	6,967.00	6,983.00	10/6/2000
CODELL, <idrecwellbore>		40	6,969.00	6,979.00	3/29/1993

## Stimulations & Treatments

Date	Zone	Primary Job Type
4/1/1993	CODELL, <idrecwellbore>	DRILLING/COMPLETION - ORIGINAL
Technical Result	Tech Result Details	Tech Result Note

Comment

**Well Name: ANDERSON E24-12**

VERTICAL - ORIGINAL HOLE, 2/20/2014 10:09:26 AM

## Stimulations & Treatments

Date 10/16/2003	Zone CODELL, <idrecwellbore>	Primary Job Type RE-FRAC
Technical Result Failure	Tech Result Details Pressured Out	Tech Result Note FRAC ABORTED DUE TO ANNULAR PRESSURE ISSUES.

Comment  
FRAC ABORTED DUE TO ANNULAR PSI ISSUES

Date 11/3/2003	Zone CODELL, <idrecwellbore>	Primary Job Type RE-FRAC
Technical Result	Tech Result Details	Tech Result Note
Comment		

## Other In Hole

Run Date	Des	OD (in)	Top (ftKB)	Btm (ftKB)

## Logs

Date	Type	Top, MD (ftKB)	Btm, MD (ftKB)
3/22/1993	COMPENSATED DENSITY	3,550.0	7,102.0
3/22/1993	INDUCTION	3,550.0	3,750.0
3/29/1993	CBL/CCL/GR	3,250.0	7,084.0
1/31/2013	GYRO	12.0	6,900.0

