

Location:	COLORADO	Slot:	SLOT#03 PRONGHORN D-X-9HNB (1273'FSL & 260'FWL,SEC.9)
Field:	WELD COUNTY	Well:	PRONGHORN D-X-9HNB
Facility:	SEC.09-T5N-R61W	Wellbore:	PRONGHORN D-X-9HNB PWB

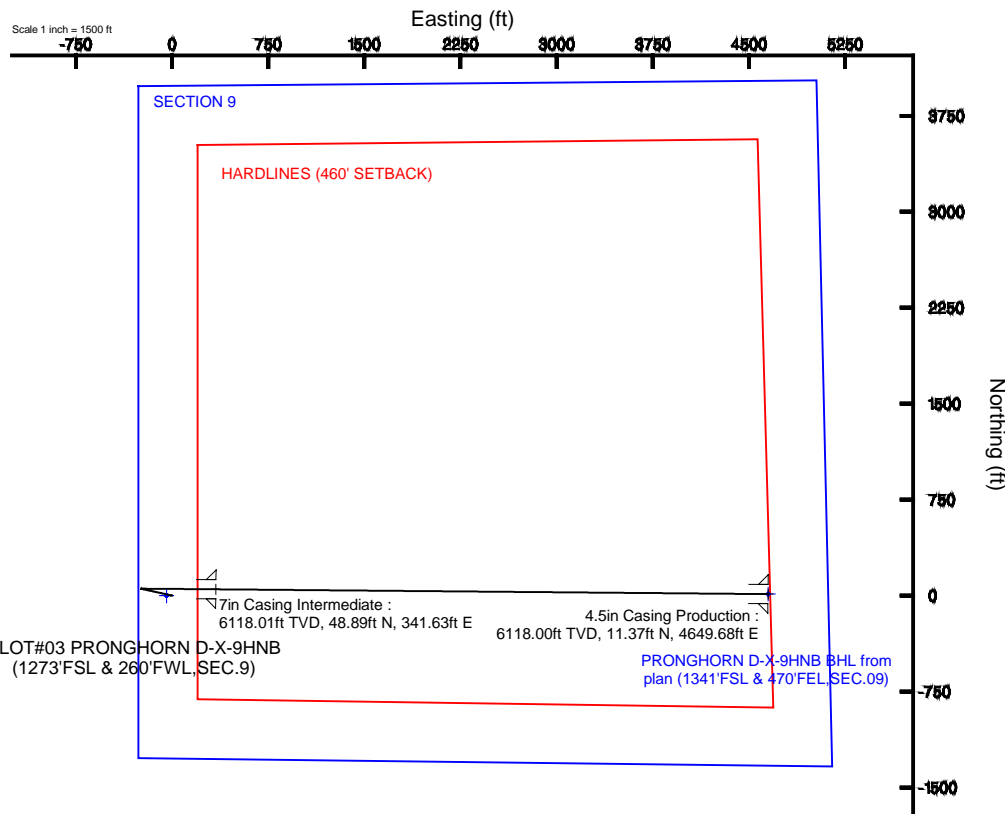
Plot reference wellpath is PRONGHORN D-X-9HNB (REV-A.0) PWP	
True vertical depths are referenced to RIG (RKB)	Grid System: NAD83 / Lambert Colorado SP, Northern Zone (501), US feet
Measured depths are referenced to RIG (RKB)	North Reference: True north
RIG (RKB) to Mean Sea Level: 4654 feet	Scale: True distance
Mean Sea Level to Mud line (At Slot: SLOT#03 PRONGHORN D-X-9HNB (1273FSL & 260FOWL,SEC.9)): 0 feet	Depths are in feet
Coordinates are in feet referenced to Slot	Created by: gsmuelner on 1/27/2014

Facility Name	Grid East (US ft)	Grid North (US ft)	Latitude	Longitude		
SEC.09-TSN-R61W	3355616.206	1395470.987	40°24'42.984"N	104°13'22.368"W		
Slot	Local N (ft)	Local E (ft)	Grid East (US ft)	Grid North (US ft)	Latitude	Longitude
SLOT#03 PRONGHORN D-X-9HNB (1273FSL & 260FWL,SEC.9)	0.00	41.77	3355657.971	1395471.589	40°24'42.984"N	104°13'21.828"W
RIG (RKB) to Mud line (At Slot: SLOT#03 PRONGHORN D-X-9HNB (1273FSL & 260FWL,SEC.9))					4654ft	
Mean Sea Level to Mud line (At Slot: SLOT#03 PRONGHORN D-X-9HNB (1273FSL & 260FWL,SEC.9))					0ft	
RIG (RKB) to Mean Sea Level					4654ft	

Design Comment	MD (ft)	Inc (°)	Az (°)	TVD (ft)	Local N (ft)	Local E (ft)	DLS (°/100ft)	VS (ft)
Tie On	17.00	0.000	282.430	17.00	0.00	0.00	0.00	0.00
End of Tangent	1400.00	0.000	282.430	1400.00	0.00	0.00	0.00	0.00
End of Build	1900.00	10.000	282.430	1897.47	9.37	-42.50	2.00	-42.48
End of Tangent	2843.49	10.000	282.430	2826.62	44.63	-202.50	0.00	-202.39
End of Drop	3343.49	0.000	90.499	3324.09	54.00	-245.00	2.00	-244.87
End of Tangent	5592.60	0.000	90.499	5573.20	54.00	-245.00	0.00	-244.87
End of Build	6228.96	70.000	90.499	6062.66	51.02	97.71	11.00	97.83
End of Tangent	6298.96	70.000	90.499	6086.60	50.44	163.49	0.00	163.61
End of 3D Arc	6480.78	90.000	90.499	6118.01	48.89	341.63	11.00	341.75
End of Tangent	10789.81	90.000	90.499	6118.00	11.37	4650.49	0.00	4650.51

Start MD (ft)	End MD (ft)	Tool	Model	Log Name/Comment	Wellbore
17.00	10789.81	NaviTrak	NaviTrak (Standard)		PRONGHORN D-X-9HNB PWB

MD (ft)	Inc (°)	Az (°)	TVD (ft)	Local N (ft)	Local E (ft)	Grid East (US ft)	Grid North (US ft)	Latitude	Longitude
10789.81	90.000	90.499	6118.00	11.37	4650.49	3360307.63	1385549.94	40°24'43.092"N	104°1'22.1708"W



BGGM (1945.0 to 2015.0) Dip: 67.04° Field: 52838.8 nT  
Magnetic North is 8.25 degrees East of True North (at 1/27/2014)

To correct azimuth from Magnetic to True add 8.25 degrees



# Planned Wellpath Report

PRONGHORN D-X-9HNB (REV-A.0) PWP

Page 1 of 7



## REFERENCE WELLPATH IDENTIFICATION

Operator	BONANZA CREEK OIL COMPANY	Slot	SLOT#03 PRONGHORN D-X-9HNB (1273'FSL & 260'FWL,SEC.9)
Area	COLORADO	Well	PRONGHORN D-X-9HNB
Field	WELD COUNTY	Wellbore	PRONGHORN D-X-9HNB PWB
Facility	SEC.09-T5N-R61W		

## REPORT SETUP INFORMATION

Projection System	NAD83 / Lambert Colorado SP, Northern Zone (501), US feet	Software System	WellArchitect® 4.0.0
North Reference	True	User	Guenaler
Scale	0.999961	Report Generated	1/27/2014 at 5:54:57 PM
Convergence at slot	n/a	Database/Source file	WA_Denver/PRONGHORN_D-X-9HNB_PWB.xml

## WELLPATH LOCATION

	Local coordinates		Grid coordinates		Geographic coordinates	
	North[ft]	East[ft]	Easting[US ft]	Northing[US ft]	Latitude	Longitude
Slot Location	0.00	41.77	3355657.97	1395471.59	40°24'42.984"N	104°13'21.828"W
Facility Reference Pt			3355616.21	1395470.99	40°24'42.984"N	104°13'22.368"W
Field Reference Pt			3327718.19	1377782.99	40°21'52.020"N	104°19'26.040"W

## WELLPATH DATUM

Calculation method	Minimum curvature	RIG (RKB) to Facility Vertical Datum	4654.00ft
Horizontal Reference Pt	Slot	RIG (RKB) to Mean Sea Level	4654.00ft
Vertical Reference Pt	RIG (RKB)	RIG (RKB) to Mud Line at Slot (SLOT#03 PRONGHORN D-X-9HNB (1273'FSL & 260'FWL,SEC.9))	4654.00ft
MD Reference Pt	RIG (RKB)	Section Origin	N 0.00, E 0.00 ft
Field Vertical Reference	Mean Sea Level	Section Azimuth	89.86°



# Planned Wellpath Report

## PRONGHORN D-X-9HNB (REV-A.0) PWP

Page 2 of 7



### REFERENCE WELLPATH IDENTIFICATION

Operator	BONANZA CREEK OIL COMPANY	Slot	SLOT#03 PRONGHORN D-X-9HNB (1273'FSL & 260'FWL,SEC.9)
Area	COLORADO	Well	PRONGHORN D-X-9HNB
Field	WELD COUNTY	Wellbore	PRONGHORN D-X-9HNB PWB
Facility	SEC.09-T5N-R61W		

### WELLPATH DATA (118 stations) † = interpolated/extrapolated station

MD [ft]	Inclination [°]	Azimuth [°]	TVD [ft]	Vert Sect [ft]	North [ft]	East [ft]	Latitude	Longitude	DLS [°/100ft]	Comments
0.00†	0.000	282.430	0.00	0.00	0.00	0.00	40°24'42.984"N	104°13'21.828"W	0.00	
17.00	0.000	282.430	17.00	0.00	0.00	0.00	40°24'42.984"N	104°13'21.828"W	0.00	Tie On
117.00†	0.000	282.430	117.00	0.00	0.00	0.00	40°24'42.984"N	104°13'21.828"W	0.00	
217.00†	0.000	282.430	217.00	0.00	0.00	0.00	40°24'42.984"N	104°13'21.828"W	0.00	
317.00†	0.000	282.430	317.00	0.00	0.00	0.00	40°24'42.984"N	104°13'21.828"W	0.00	
417.00†	0.000	282.430	417.00	0.00	0.00	0.00	40°24'42.984"N	104°13'21.828"W	0.00	
517.00†	0.000	282.430	517.00	0.00	0.00	0.00	40°24'42.984"N	104°13'21.828"W	0.00	
617.00†	0.000	282.430	617.00	0.00	0.00	0.00	40°24'42.984"N	104°13'21.828"W	0.00	
717.00†	0.000	282.430	717.00	0.00	0.00	0.00	40°24'42.984"N	104°13'21.828"W	0.00	
817.00†	0.000	282.430	817.00	0.00	0.00	0.00	40°24'42.984"N	104°13'21.828"W	0.00	
917.00†	0.000	282.430	917.00	0.00	0.00	0.00	40°24'42.984"N	104°13'21.828"W	0.00	
1017.00†	0.000	282.430	1017.00	0.00	0.00	0.00	40°24'42.984"N	104°13'21.828"W	0.00	
1117.00†	0.000	282.430	1117.00	0.00	0.00	0.00	40°24'42.984"N	104°13'21.828"W	0.00	
1217.00†	0.000	282.430	1217.00	0.00	0.00	0.00	40°24'42.984"N	104°13'21.828"W	0.00	
1317.00†	0.000	282.430	1317.00	0.00	0.00	0.00	40°24'42.984"N	104°13'21.828"W	0.00	
1400.00	0.000	282.430	1400.00	0.00	0.00	0.00	40°24'42.984"N	104°13'21.828"W	0.00	End of Tangent
1417.00†	0.340	282.430	1417.00	-0.05	0.01	-0.05	40°24'42.984"N	104°13'21.829"W	2.00	
1517.00†	2.340	282.430	1516.97	-2.33	0.51	-2.33	40°24'42.989"N	104°13'21.858"W	2.00	
1617.00†	4.340	282.430	1616.79	-8.02	1.77	-8.02	40°24'43.001"N	104°13'21.932"W	2.00	
1717.00†	6.340	282.430	1716.35	-17.10	3.77	-17.11	40°24'43.021"N	104°13'22.049"W	2.00	
1817.00†	8.340	282.430	1815.53	-29.57	6.52	-29.59	40°24'43.048"N	104°13'22.210"W	2.00	
1900.00	10.000	282.430	1897.47	-42.48	9.37	-42.50	40°24'43.077"N	104°13'22.377"W	2.00	End of Build
1917.00†	10.000	282.430	1914.21	-45.36	10.00	-45.39	40°24'43.083"N	104°13'22.415"W	0.00	
2017.00†	10.000	282.430	2012.69	-62.31	13.74	-62.34	40°24'43.120"N	104°13'22.634"W	0.00	
2117.00†	10.000	282.430	2111.17	-79.26	17.48	-79.30	40°24'43.157"N	104°13'22.853"W	0.00	
2217.00†	10.000	282.430	2209.65	-96.21	21.22	-96.26	40°24'43.194"N	104°13'23.072"W	0.00	
2317.00†	10.000	282.430	2308.13	-113.16	24.95	-113.22	40°24'43.231"N	104°13'23.292"W	0.00	
2417.00†	10.000	282.430	2406.61	-130.10	28.69	-130.17	40°24'43.268"N	104°13'23.511"W	0.00	
2517.00†	10.000	282.430	2505.09	-147.05	32.43	-147.13	40°24'43.304"N	104°13'23.730"W	0.00	
2617.00†	10.000	282.430	2603.57	-164.00	36.17	-164.09	40°24'43.341"N	104°13'23.949"W	0.00	



# Planned Wellpath Report

## PRONGHORN D-X-9HNB (REV-A.0) PWP

Page 3 of 7



### REFERENCE WELLPATH IDENTIFICATION

Operator	BONANZA CREEK OIL COMPANY	Slot	SLOT#03 PRONGHORN D-X-9HNB (1273'FSL & 260'FWL,SEC.9)
Area	COLORADO	Well	PRONGHORN D-X-9HNB
Field	WELD COUNTY	Wellbore	PRONGHORN D-X-9HNB PWB
Facility	SEC.09-T5N-R61W		

### WELLPATH DATA (118 stations) † = interpolated/extrapolated station

MD [ft]	Inclination [°]	Azimuth [°]	TVD [ft]	Vert Sect [ft]	North [ft]	East [ft]	Latitude	Longitude	DLS [°/100ft]	Comments
2717.00†	10.000	282.430	2702.05	-180.95	39.90	-181.05	40°24'43.378"N	104°13'24.169"W	0.00	
2817.00†	10.000	282.430	2800.53	-197.90	43.64	-198.01	40°24'43.415"N	104°13'24.388"W	0.00	
2843.49	10.000	282.430	2826.62	-202.39	44.63	-202.50	40°24'43.425"N	104°13'24.446"W	0.00	End of Tangent
2917.00†	8.530	282.430	2899.17	-213.94	47.18	-214.05	40°24'43.450"N	104°13'24.595"W	2.00	
3017.00†	6.530	282.430	2998.30	-226.73	50.00	-226.85	40°24'43.478"N	104°13'24.761"W	2.00	
3117.00†	4.530	282.430	3097.83	-236.13	52.07	-236.26	40°24'43.499"N	104°13'24.882"W	2.00	
3217.00†	2.530	282.430	3197.64	-242.14	53.40	-242.27	40°24'43.512"N	104°13'24.960"W	2.00	
3317.00†	0.530	282.430	3297.60	-244.75	53.97	-244.88	40°24'43.517"N	104°13'24.994"W	2.00	
3343.49	0.000	90.499	3324.09	-244.87	54.00	-245.00	40°24'43.518"N	104°13'24.995"W	2.00	End of Drop
3417.00†	0.000	90.499	3397.60	-244.87	54.00	-245.00	40°24'43.518"N	104°13'24.995"W	0.00	
3517.00†	0.000	90.499	3497.60	-244.87	54.00	-245.00	40°24'43.518"N	104°13'24.995"W	0.00	
3617.00†	0.000	90.499	3597.60	-244.87	54.00	-245.00	40°24'43.518"N	104°13'24.995"W	0.00	
3717.00†	0.000	90.499	3697.60	-244.87	54.00	-245.00	40°24'43.518"N	104°13'24.995"W	0.00	
3817.00†	0.000	90.499	3797.60	-244.87	54.00	-245.00	40°24'43.518"N	104°13'24.995"W	0.00	
3917.00†	0.000	90.499	3897.60	-244.87	54.00	-245.00	40°24'43.518"N	104°13'24.995"W	0.00	
4017.00†	0.000	90.499	3997.60	-244.87	54.00	-245.00	40°24'43.518"N	104°13'24.995"W	0.00	
4117.00†	0.000	90.499	4097.60	-244.87	54.00	-245.00	40°24'43.518"N	104°13'24.995"W	0.00	
4217.00†	0.000	90.499	4197.60	-244.87	54.00	-245.00	40°24'43.518"N	104°13'24.995"W	0.00	
4317.00†	0.000	90.499	4297.60	-244.87	54.00	-245.00	40°24'43.518"N	104°13'24.995"W	0.00	
4417.00†	0.000	90.499	4397.60	-244.87	54.00	-245.00	40°24'43.518"N	104°13'24.995"W	0.00	
4517.00†	0.000	90.499	4497.60	-244.87	54.00	-245.00	40°24'43.518"N	104°13'24.995"W	0.00	
4617.00†	0.000	90.499	4597.60	-244.87	54.00	-245.00	40°24'43.518"N	104°13'24.995"W	0.00	
4717.00†	0.000	90.499	4697.60	-244.87	54.00	-245.00	40°24'43.518"N	104°13'24.995"W	0.00	
4817.00†	0.000	90.499	4797.60	-244.87	54.00	-245.00	40°24'43.518"N	104°13'24.995"W	0.00	
4917.00†	0.000	90.499	4897.60	-244.87	54.00	-245.00	40°24'43.518"N	104°13'24.995"W	0.00	
5017.00†	0.000	90.499	4997.60	-244.87	54.00	-245.00	40°24'43.518"N	104°13'24.995"W	0.00	
5117.00†	0.000	90.499	5097.60	-244.87	54.00	-245.00	40°24'43.518"N	104°13'24.995"W	0.00	
5217.00†	0.000	90.499	5197.60	-244.87	54.00	-245.00	40°24'43.518"N	104°13'24.995"W	0.00	
5317.00†	0.000	90.499	5297.60	-244.87	54.00	-245.00	40°24'43.518"N	104°13'24.995"W	0.00	
5417.00†	0.000	90.499	5397.60	-244.87	54.00	-245.00	40°24'43.518"N	104°13'24.995"W	0.00	



# Planned Wellpath Report

## PRONGHORN D-X-9HNB (REV-A.0) PWP

Page 4 of 7



### REFERENCE WELLPATH IDENTIFICATION

Operator	BONANZA CREEK OIL COMPANY	Slot	SLOT#03 PRONGHORN D-X-9HNB (1273'FSL & 260'FWL,SEC.9)
Area	COLORADO	Well	PRONGHORN D-X-9HNB
Field	WELD COUNTY	Wellbore	PRONGHORN D-X-9HNB PWB
Facility	SEC.09-T5N-R61W		

### WELLPATH DATA (118 stations) † = interpolated/extrapolated station

MD [ft]	Inclination [°]	Azimuth [°]	TVD [ft]	Vert Sect [ft]	North [ft]	East [ft]	Latitude	Longitude	DLS [°/100ft]	Comments
5517.00†	0.000	90.499	5497.60	-244.87	54.00	-245.00	40°24'43.518"N	104°13'24.995"W	0.00	
5592.60	0.000	90.499	5573.20	-244.87	54.00	-245.00	40°24'43.518"N	104°13'24.995"W	0.00	End of Tangent
5617.00†	2.684	90.499	5597.59	-244.30	54.00	-244.43	40°24'43.518"N	104°13'24.988"W	11.00	
5717.00†	13.684	90.499	5696.42	-230.08	53.87	-230.22	40°24'43.516"N	104°13'24.804"W	11.00	
5817.00†	24.684	90.499	5790.72	-197.28	53.59	-197.41	40°24'43.514"N	104°13'24.380"W	11.00	
5917.00†	35.684	90.499	5877.03	-147.08	53.15	-147.21	40°24'43.509"N	104°13'23.731"W	11.00	
6017.00†	46.684	90.499	5952.17	-81.34	52.58	-81.46	40°24'43.504"N	104°13'22.881"W	11.00	
6117.00†	57.684	90.499	6013.39	-2.46	51.89	-2.59	40°24'43.497"N	104°13'21.861"W	11.00	
6217.00†	68.684	90.499	6058.43	86.64	51.11	86.52	40°24'43.489"N	104°13'20.710"W	11.00	
6228.96	70.000	90.499	6062.66	97.83	51.02	97.71	40°24'43.488"N	104°13'20.565"W	11.00	End of Build
6298.96	70.000	90.499	6086.60	163.61	50.44	163.49	40°24'43.482"N	104°13'19.715"W	0.00	End of Tangent
6317.00†	71.984	90.499	6092.47	180.66	50.29	180.54	40°24'43.481"N	104°13'19.494"W	11.00	
6417.00†	82.984	90.499	6114.11	278.13	49.44	278.01	40°24'43.473"N	104°13'18.234"W	11.00	
6480.78	90.000	90.499	6118.01	341.75	48.89	341.63	40°24'43.467"N	104°13'17.412"W	11.00	End of 3D Arc
6517.00†	90.000	90.499	6118.01	377.96	48.58	377.84	40°24'43.464"N	104°13'16.943"W	0.00	
6617.00†	90.000	90.499	6118.01	477.96	47.70	477.84	40°24'43.455"N	104°13'15.651"W	0.00	
6717.00†	90.000	90.499	6118.01	577.95	46.83	577.84	40°24'43.447"N	104°13'14.358"W	0.00	
6817.00†	90.000	90.499	6118.01	677.94	45.96	677.83	40°24'43.438"N	104°13'13.065"W	0.00	
6917.00†	90.000	90.499	6118.01	777.94	45.09	777.83	40°24'43.429"N	104°13'11.772"W	0.00	
7017.00†	90.000	90.499	6118.01	877.93	44.22	877.82	40°24'43.421"N	104°13'10.480"W	0.00	
7117.00†	90.000	90.499	6118.01	977.92	43.35	977.82	40°24'43.412"N	104°13'09.187"W	0.00	
7217.00†	90.000	90.499	6118.01	1077.92	42.48	1077.82	40°24'43.404"N	104°13'07.894"W	0.00	
7317.00†	90.000	90.499	6118.01	1177.91	41.61	1177.81	40°24'43.395"N	104°13'06.602"W	0.00	
7417.00†	90.000	90.499	6118.01	1277.91	40.74	1277.81	40°24'43.386"N	104°13'05.309"W	0.00	
7517.00†	90.000	90.499	6118.01	1377.90	39.87	1377.81	40°24'43.378"N	104°13'04.016"W	0.00	
7617.00†	90.000	90.499	6118.01	1477.89	39.00	1477.80	40°24'43.369"N	104°13'02.723"W	0.00	
7717.00†	90.000	90.499	6118.01	1577.89	38.13	1577.80	40°24'43.360"N	104°13'01.431"W	0.00	
7817.00†	90.000	90.499	6118.01	1677.88	37.25	1677.79	40°24'43.352"N	104°13'00.138"W	0.00	
7917.00†	90.000	90.499	6118.01	1777.87	36.38	1777.79	40°24'43.343"N	104°12'58.845"W	0.00	
8017.00†	90.000	90.499	6118.01	1877.87	35.51	1877.79	40°24'43.334"N	104°12'57.553"W	0.00	



# Planned Wellpath Report

## PRONGHORN D-X-9HNB (REV-A.0) PWP

Page 5 of 7



### REFERENCE WELLPATH IDENTIFICATION

Operator	BONANZA CREEK OIL COMPANY	Slot	SLOT#03 PRONGHORN D-X-9HNB (1273'FSL & 260'FWL,SEC.9)
Area	COLORADO	Well	PRONGHORN D-X-9HNB
Field	WELD COUNTY	Wellbore	PRONGHORN D-X-9HNB PWB
Facility	SEC.09-T5N-R61W		

### WELLPATH DATA (118 stations) † = interpolated/extrapolated station

MD [ft]	Inclination [°]	Azimuth [°]	TVD [ft]	Vert Sect [ft]	North [ft]	East [ft]	Latitude	Longitude	DLS [°/100ft]	Comments
8117.00†	90.000	90.499	6118.01	1977.86	34.64	1977.78	40°24'43.326"N	104°12'56.260"W	0.00	
8217.00†	90.000	90.499	6118.01	2077.86	33.77	2077.78	40°24'43.317"N	104°12'54.967"W	0.00	
8317.00†	90.000	90.499	6118.01	2177.85	32.90	2177.78	40°24'43.308"N	104°12'53.674"W	0.00	
8417.00†	90.000	90.499	6118.00	2277.84	32.03	2277.77	40°24'43.299"N	104°12'52.382"W	0.00	
8517.00†	90.000	90.499	6118.00	2377.84	31.16	2377.77	40°24'43.291"N	104°12'51.089"W	0.00	
8617.00†	90.000	90.499	6118.00	2477.83	30.29	2477.76	40°24'43.282"N	104°12'49.796"W	0.00	
8717.00†	90.000	90.499	6118.00	2577.82	29.42	2577.76	40°24'43.273"N	104°12'48.504"W	0.00	
8817.00†	90.000	90.499	6118.00	2677.82	28.55	2677.76	40°24'43.265"N	104°12'47.211"W	0.00	
8917.00†	90.000	90.499	6118.00	2777.81	27.68	2777.75	40°24'43.256"N	104°12'45.918"W	0.00	
9017.00†	90.000	90.499	6118.00	2877.81	26.81	2877.75	40°24'43.247"N	104°12'44.625"W	0.00	
9117.00†	90.000	90.499	6118.00	2977.80	25.93	2977.75	40°24'43.238"N	104°12'43.333"W	0.00	
9217.00†	90.000	90.499	6118.00	3077.79	25.06	3077.74	40°24'43.230"N	104°12'42.040"W	0.00	
9317.00†	90.000	90.499	6118.00	3177.79	24.19	3177.74	40°24'43.221"N	104°12'40.747"W	0.00	
9417.00†	90.000	90.499	6118.00	3277.78	23.32	3277.73	40°24'43.212"N	104°12'39.455"W	0.00	
9517.00†	90.000	90.499	6118.00	3377.77	22.45	3377.73	40°24'43.204"N	104°12'38.162"W	0.00	
9617.00†	90.000	90.499	6118.00	3477.77	21.58	3477.73	40°24'43.195"N	104°12'36.869"W	0.00	
9717.00†	90.000	90.499	6118.00	3577.76	20.71	3577.72	40°24'43.186"N	104°12'35.576"W	0.00	
9817.00†	90.000	90.499	6118.00	3677.76	19.84	3677.72	40°24'43.177"N	104°12'34.284"W	0.00	
9917.00†	90.000	90.499	6118.00	3777.75	18.97	3777.72	40°24'43.169"N	104°12'32.991"W	0.00	
10017.00†	90.000	90.499	6118.00	3877.74	18.10	3877.71	40°24'43.160"N	104°12'31.698"W	0.00	
10117.00†	90.000	90.499	6118.00	3977.74	17.23	3977.71	40°24'43.151"N	104°12'30.406"W	0.00	
10217.00†	90.000	90.499	6118.00	4077.73	16.36	4077.70	40°24'43.142"N	104°12'29.113"W	0.00	
10317.00†	90.000	90.499	6118.00	4177.73	15.48	4177.70	40°24'43.134"N	104°12'27.820"W	0.00	
10417.00†	90.000	90.499	6118.00	4277.72	14.61	4277.70	40°24'43.125"N	104°12'26.527"W	0.00	
10517.00†	90.000	90.499	6118.00	4377.71	13.74	4377.69	40°24'43.116"N	104°12'25.235"W	0.00	
10617.00†	90.000	90.499	6118.00	4477.71	12.87	4477.69	40°24'43.107"N	104°12'23.942"W	0.00	
10717.00†	90.000	90.499	6118.00	4577.70	12.00	4577.68	40°24'43.098"N	104°12'22.649"W	0.00	
10789.81	90.000	90.499	6118.00 <sup>1</sup>	4650.51	11.37	4650.49	40°24'43.092"N	104°12'21.708"W	0.00	End of Tangent



# Planned Wellpath Report

## PRONGHORN D-X-9HNB (REV-A.0) PWP

Page 6 of 7



REFERENCE WELLPATH IDENTIFICATION			
Operator	BONANZA CREEK OIL COMPANY	Slot	SLOT#03 PRONGHORN D-X-9HNB (1273'FSL & 260'FWL,SEC.9)
Area	COLORADO	Well	PRONGHORN D-X-9HNB
Field	WELD COUNTY	Wellbore	PRONGHORN D-X-9HNB PWB
Facility	SEC.09-T5N-R61W		

HOLE & CASING SECTIONS - Ref Wellbore: PRONGHORN D-X-9HNB PWB    Ref Wellpath: PRONGHORN D-X-9HNB (REV-A.0) PWP									
String/Diameter	Start MD [ft]	End MD [ft]	Interval [ft]	Start TVD [ft]	End TVD [ft]	Start N/S [ft]	Start E/W [ft]	End N/S [ft]	End E/W [ft]
7in Casing Intermediate	17.00	6480.78	6463.78	17.00	6118.01	0.00	0.00	48.89	341.63
4.5in Casing Production	17.00	10789.00	10772.00	17.00	6118.00	0.00	0.00	11.37	4649.68

TARGETS									
Name	MD [ft]	TVD [ft]	North [ft]	East [ft]	Grid East [US ft]	Grid North [US ft]	Latitude	Longitude	Shape
PRONGHORN C-W-9HNB SECTION 9		0.00	0.00	-41.77	3355616.21	1395470.99	40°24'42.984"N	104°13'22.368"W	polygon
PRONGHORN C-W-9HNB HARDLINES (460' SETBACK)		6118.00	0.00	-41.77	3355616.21	1395470.99	40°24'42.984"N	104°13'22.368"W	polygon
1) PRONGHORN D-X-9HNB BHL from plan (1341'FSL & 470'FEL,SEC.09)	10789.81	6118.00	11.37	4650.49	3360307.63	1395549.94	40°24'43.092"N	104°12'21.708"W	point

SURVEY PROGRAM - Ref Wellbore: PRONGHORN D-X-9HNB PWB    Ref Wellpath: PRONGHORN D-X-9HNB (REV-A.0) PWP				
Start MD [ft]	End MD [ft]	Positional Uncertainty Model	Log Name/Comment	Wellbore
17.00	10789.81	NaviTrak (Standard)		PRONGHORN D-X-9HNB PWB





**Planned Wellpath Report**  
**PRONGHORN D-X-9HNB (REV-A.0) PWP**  
Page 7 of 7



REFERENCE WELLPATH IDENTIFICATION			
Operator	BONANZA CREEK OIL COMPANY	Slot	SLOT#03 PRONGHORN D-X-9HNB (1273'FSL & 260'FWL,SEC.9)
Area	COLORADO	Well	PRONGHORN D-X-9HNB
Field	WELD COUNTY	Wellbore	PRONGHORN D-X-9HNB PWB
Facility	SEC.09-T5N-R61W		

DESIGN COMMENTS				
MD [ft]	Inclination [°]	Azimuth [°]	TVD [ft]	Comment
17.00	0.000	282.430	17.00	Tie On
1400.00	0.000	282.430	1400.00	End of Tangent
1900.00	10.000	282.430	1897.47	End of Build
2843.49	10.000	282.430	2826.62	End of Tangent
3343.49	0.000	90.499	3324.09	End of Drop
5592.60	0.000	90.499	5573.20	End of Tangent
6228.96	70.000	90.499	6062.66	End of Build
6298.96	70.000	90.499	6086.60	End of Tangent
6480.78	90.000	90.499	6118.01	End of 3D Arc
10789.81	90.000	90.499	6118.00	End of Tangent