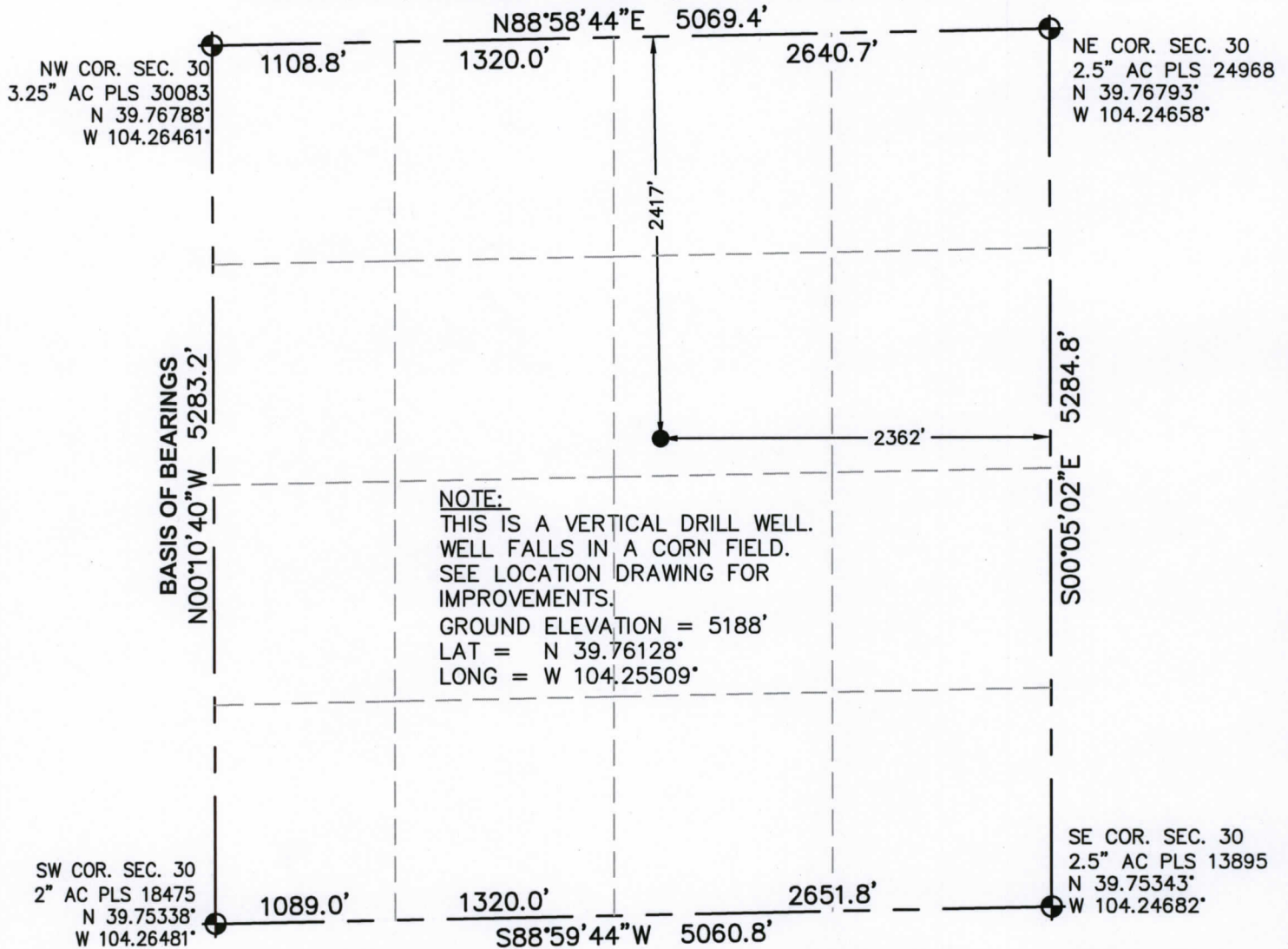


WELL LOCATION CERTIFICATE

SECTION 30, TOWNSHIP 3 SOUTH, RANGE 61 WEST, 6TH P.M.



I HEREBY STATE TO SOUTHWESTERN ENERGY COMPANY THAT THE SURFACE LOCATION OF THE WELL LINNEBUR FLYING SERVICE 3-61 #1-30 IS LOCATED 2417 FEET FROM THE NORTH LINE AND 2362 FEET FROM THE EAST LINE, SECTION 30, T.3S., R.61W., 6TH P.M. FOR AND ON BEHALF OF NV5, INC.



NOTE:

1. DISTANCES TO WELL SHOWN PERPENDICULAR TO SECTION LINES.
2. SHOWN DISTANCES ARE FIELD MEASURED - EXTERIOR SECTION LINES ARE DRAWN TO SCALE (BEST APPROX. OR FOUND MONUMENT).
3. LAT. & LONG. FOR THE SURFACE LOCATION ARE DIFFERENTIALLY CORRECTED USING DGPS WITH A PDOP VALUE OF 1.9.
4. ELEVATION SOURCE = USGS 7.5' QUAD MAP CONTOURS AT NGVD 1929 DATUM.

LEGEND:

- ⊕ = FOUND/SET MONUMENT
- = PROPOSED WELL

0' 500' 1000'
SCALE IN FEET
(1"=1000')

PERRY BASSETT, PLS 30083

THIS IS NOT A MONUMENTED BOUNDARY SURVEY, IT IS ONLY A DRAWING INTENDED TO DEPICT THE WELL LOCATION TO SECTION LINES.

NV5
BEYOND ENGINEERING

8000 S. Chester Street, Suite 200
Centennial, CO 80112
303.220.6400 TEL
303.220.9001 FAX
WWW.NV5.COM

WELL NAME: LINNEBUR FLYING SERVICE 3-61 #1-30

LOCATION: ADAMS, CO; NE 1/4 SEC.30, T3S, R61W, 6TH P.M.

FIELD DATE: 02/12/2014

DRAWING DATE: 02/17/2014

PAGE NUMBER

1

OF 1 PAGE

JOB NUMBER
DVB057400