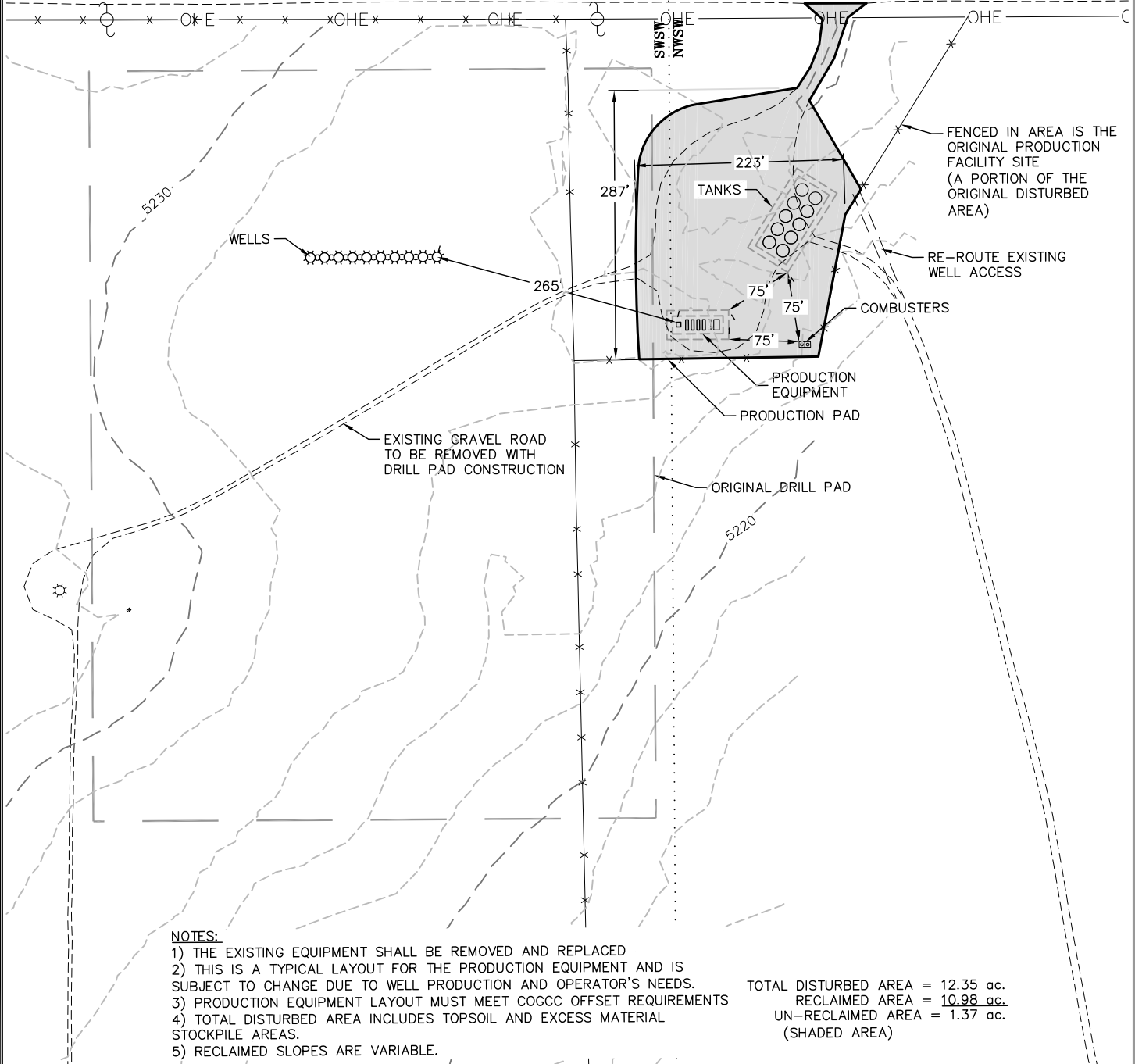




SECTION 35

SECTION 36

PICADILLY RD.



**NOTES:**

- 1) THE EXISTING EQUIPMENT SHALL BE REMOVED AND REPLACED
- 2) THIS IS A TYPICAL LAYOUT FOR THE PRODUCTION EQUIPMENT AND IS SUBJECT TO CHANGE DUE TO WELL PRODUCTION AND OPERATOR'S NEEDS.
- 3) PRODUCTION EQUIPMENT LAYOUT MUST MEET COGCC OFFSET REQUIREMENTS
- 4) TOTAL DISTURBED AREA INCLUDES TOPSOIL AND EXCESS MATERIAL STOCKPILE AREAS.
- 5) RECLAIMED SLOPES ARE VARIABLE.

TOTAL DISTURBED AREA = 12.35 ac.  
RECLAIMED AREA = 10.98 ac.  
UN-RECLAIMED AREA = 1.37 ac.  
(SHADED AREA)



**ECLIPSE**  
Surveying, Inc.

230 MAIN STREET, FORT MORGAN, CO 80701  
(970) 370-2263

REV. DATE: 2/14/14  
SCALE: 1" = 160'  
DATE: 9/18/13  
SHEET: 6 OF 8  
PROJECT: 36-1S-66W S  
DFT: TAB



**Bill Barrett Corporation**

**STATE OF COLORADO 36-1S-66W SOUTH  
RECLAIMED PAD & PRODUCTION  
EQUIPMENT**