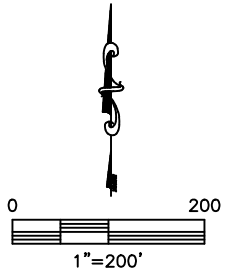
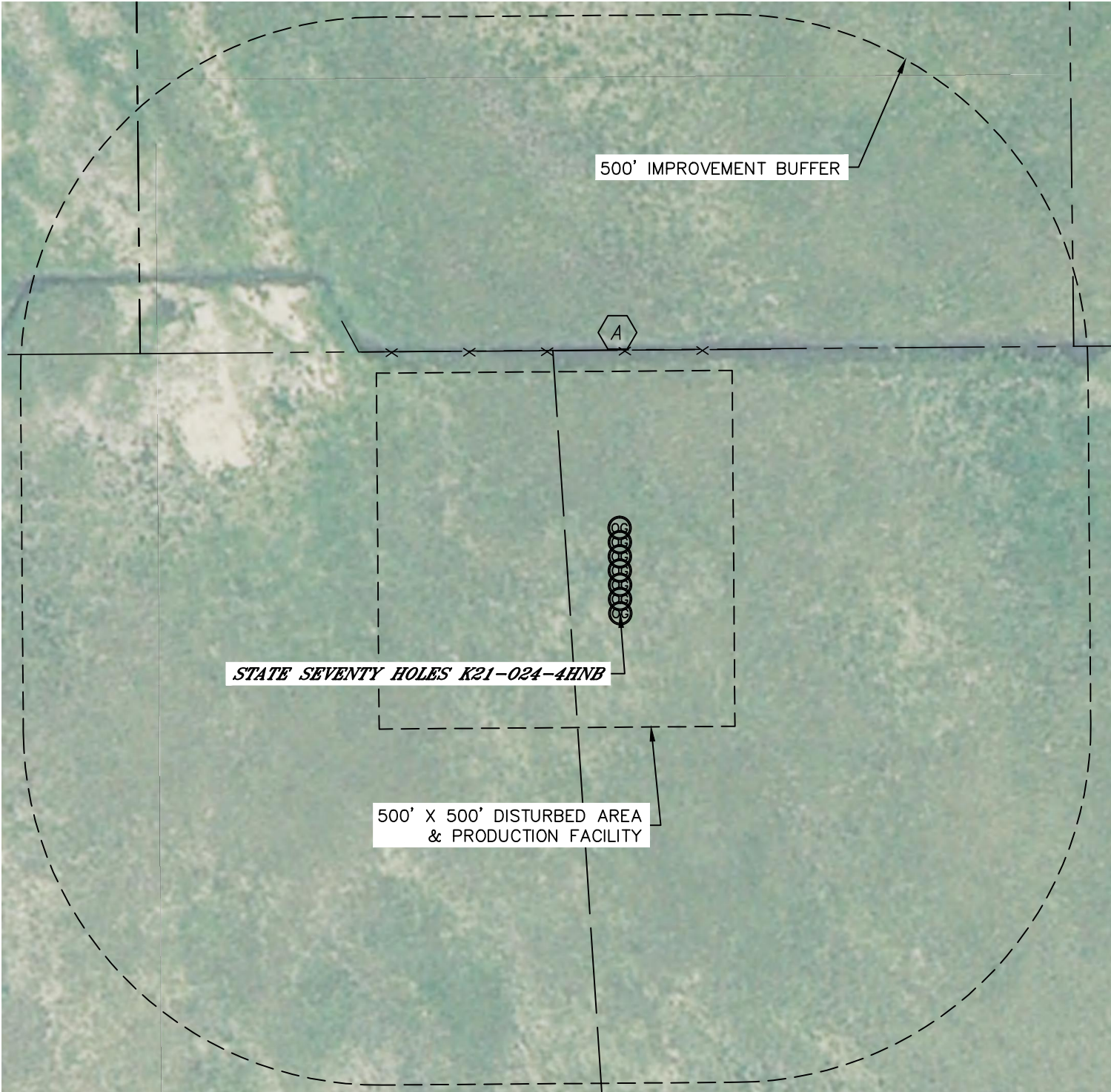




LOCATION DRAWING
STATE SEVENTY HOLES F-4 PAD

SECTION: 4
TOWNSHIP: 4N
RANGE: 62W








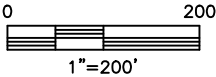
Lat40°, Inc. 1635 Foxtrail Drive, Suite 325 Loveland, CO 970-776-3321

LOCATION DRAWING
STATE SEVENTY HOLES F-4 PAD

SECTION: 4
TOWNSHIP: 4N
RANGE: 62W

IMPROVEMENTS:
(MEASURED FROM PROPOSED STATE SEVENTY HOLES K21-O24-4HNB WELL LOCATION)

-  NO BUILDING UNITS
-  NO BUILDINGS
-  FENCE 370' N



1"=200'