

MD 3167 TVD 3120.37
INC 15.43 AZ 190.84
VS -46.6

ROP (Ft/Hr)
Gamma (API)

3000
350

MD 3262 TVD 3212.35
INC 13.52 AZ 195.05
VS -48.9

MD 3357 TVD 3304.82
INC 13.02 AZ 188.1
VS -50.57

3200

3250

3300

3350

3150'- 3200': SLTST: 80% LTGY -
MEDLTGY, FRI, FN TO MED GRN, W
SRTD, CALC CMT, IMBD PYR,
SANDY, FREE SLTY SH, INTGR
POR, NO STN, NO FLOR, NO O
FLOR, NO CUT, NO RNG

3200'- 3250': SLTST: 80% LTGY -
MEDLTGY, FRI, FN TO MED GRN, W
SRTD, CALC CMT, IMBD PYR,
SANDY, FREE SLTY SH, INTGR
POR, NO STN, NO FLOR, NO O
FLOR, NO CUT, NO RNG

3250'- 3300': SLTST: 75% LTGY -
MEDLTGY, FRI, FN TO MED GRN, W
SRTD, CALC CMT, IMBD PYR, IMBD
GLAU, SANDY, FREE SH, INTGR
POR, NO STN, NO FLOR, NO O
FLOR, NO CUT, NO RNG

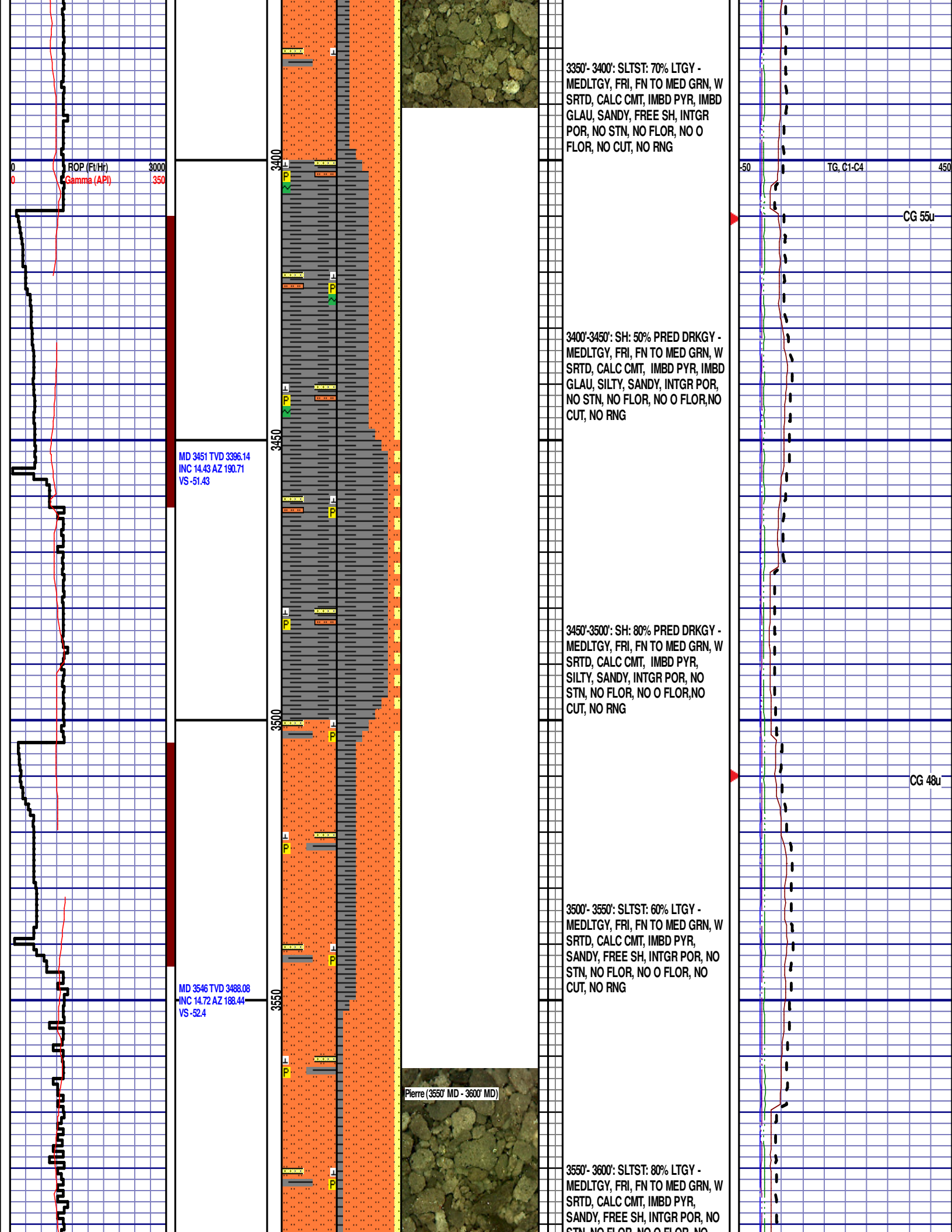
3300'- 3350': SLTST: 75% LTGY -
MEDLTGY, FRI, FN TO MED GRN, W
SRTD, CALC CMT, IMBD PYR, IMBD
GLAU, SANDY, FREE SH, INTGR
POR, NO STN, NO FLOR, NO O
FLOR, NO CUT, NO RNG

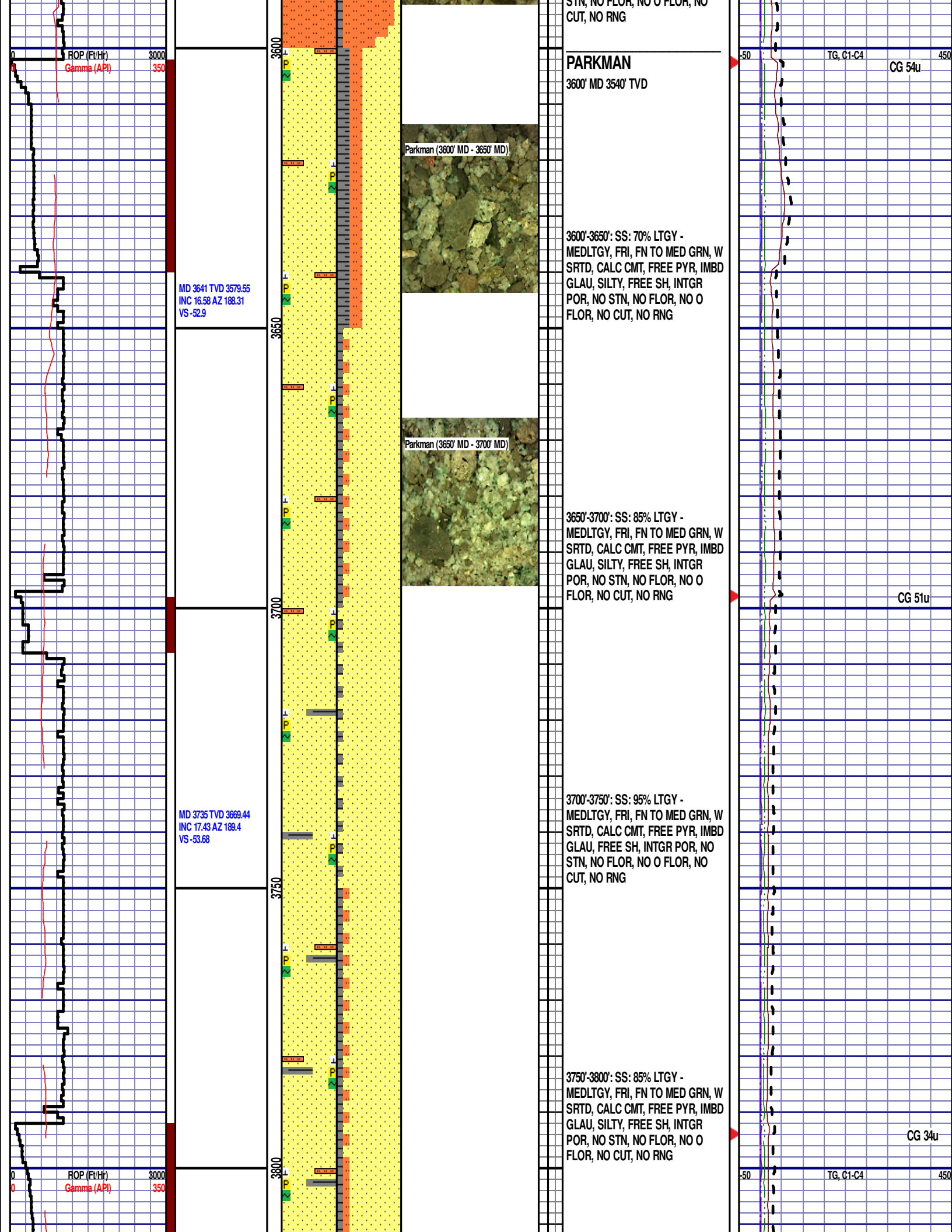
Pierre (3350' MD - 3400' MD)

TG, C1-C4

CG 30u

CG 57u





MD 3830 TVD 3760.28
INC 16.61 AZ 187.4
VS -54.24

MD 3925 TVD 3851.52
INC 15.75 AZ 187.87
VS -54.42

MD 4020 TVD 3943.4
INC 13.68 AZ 186.5
VS -54.41

3800'-3850': SS: 80% LTGY -
MEDLTGY, FRI, FN TO MED GRN, W
SRTD, CALC CMT, FREE PYR, IMBD
GLAU, SILTY, FREE SH, INTGR
POR, NO STN, NO FLOR, NO O
FLOR, NO CUT, NO RNG

3850'-3900': SS: 80% LTGY -
MEDLTGY, FRI, FN TO MED GRN, W
SRTD, CALC CMT, FREE PYR, IMBD
GLAU, SILTY, FREE SH, INTGR
POR, NO STN, NO FLOR, NO O
FLOR, NO CUT, NO RNG

3900'-3950': SS: 80% LTGY -
MEDLTGY, FRI, FN TO MED GRN, W
SRTD, CALC CMT, FREE PYR, IMBD
GLAU, SILTY, FREE SH, INTGR
POR, NO STN, NO FLOR, NO O
FLOR, NO CUT, NO RNG

Parkman (3950' MD - 4000' MD)

3950'- 4000': SLTST: 70% GY -
MEDLTGY, FRI, FN TO MED GRN, W
SRTD, CALC CMT, IMBD PYR, IMBD
GLAU, SANDY, FREE SH, INTGR
POR, NO STN, NO FLOR, NO O
FLOR, NO CUT, NO RNG

CG 33u

CG 31u

ROP (Ft/Hr)
Gamma (API)

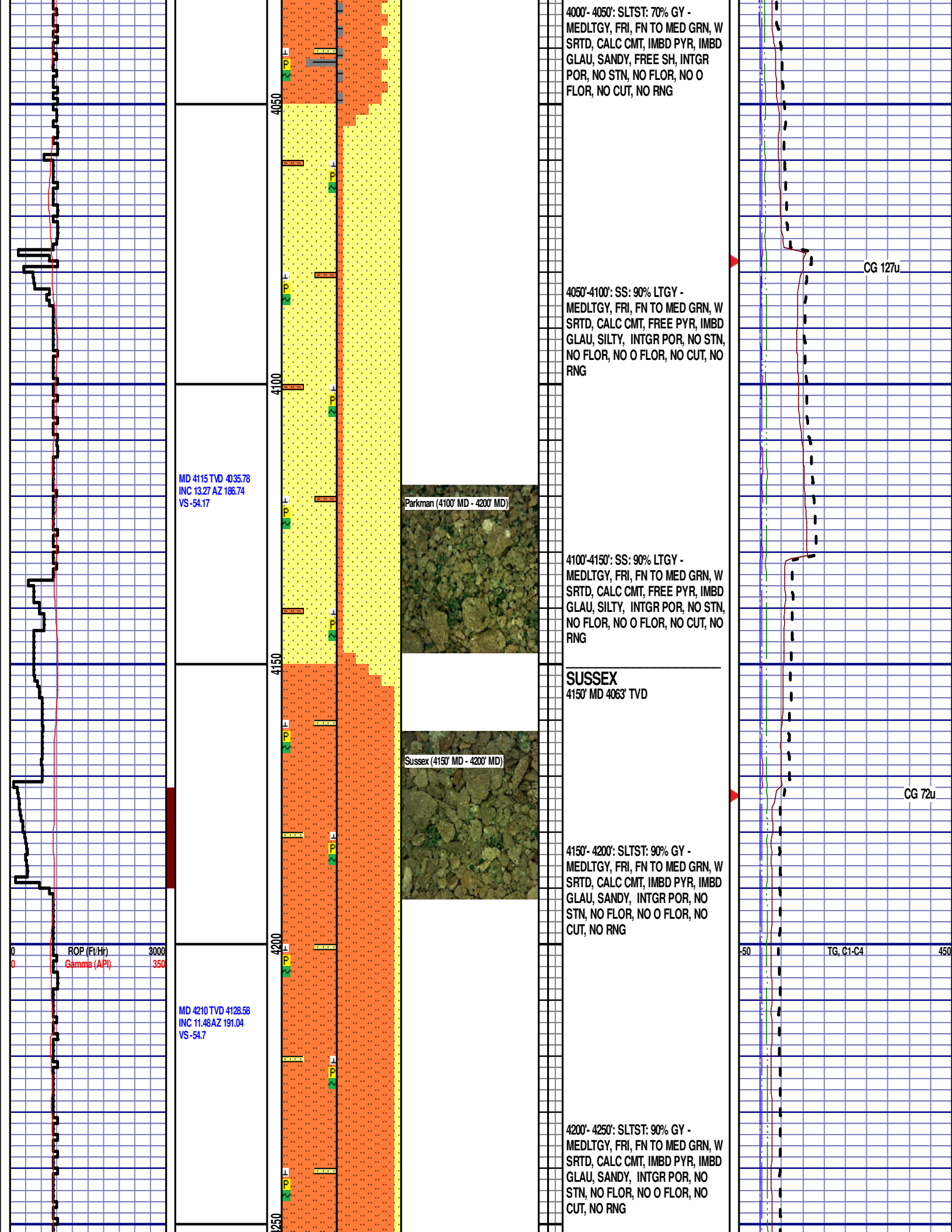
3000
3500

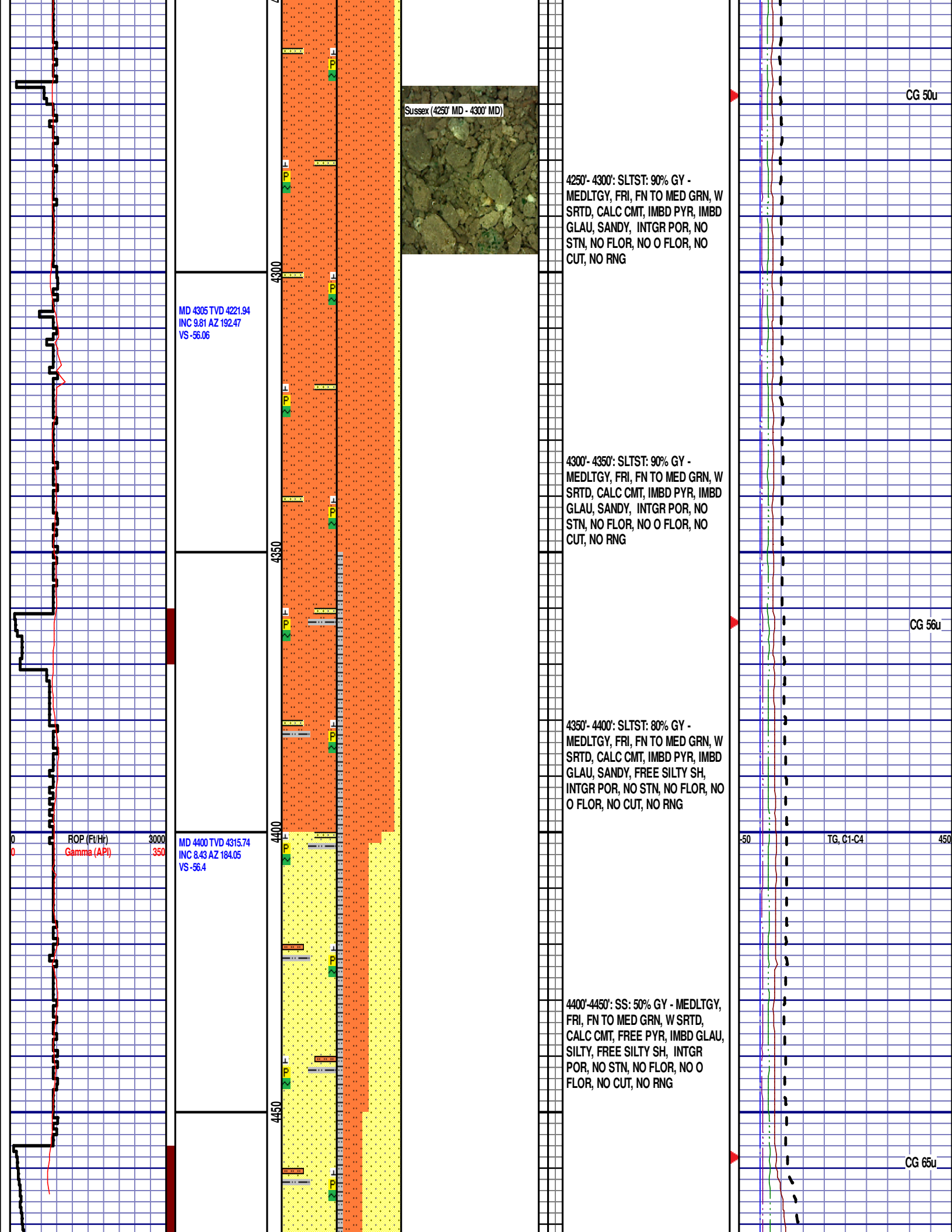
4000

50

TG, C1-C4

450





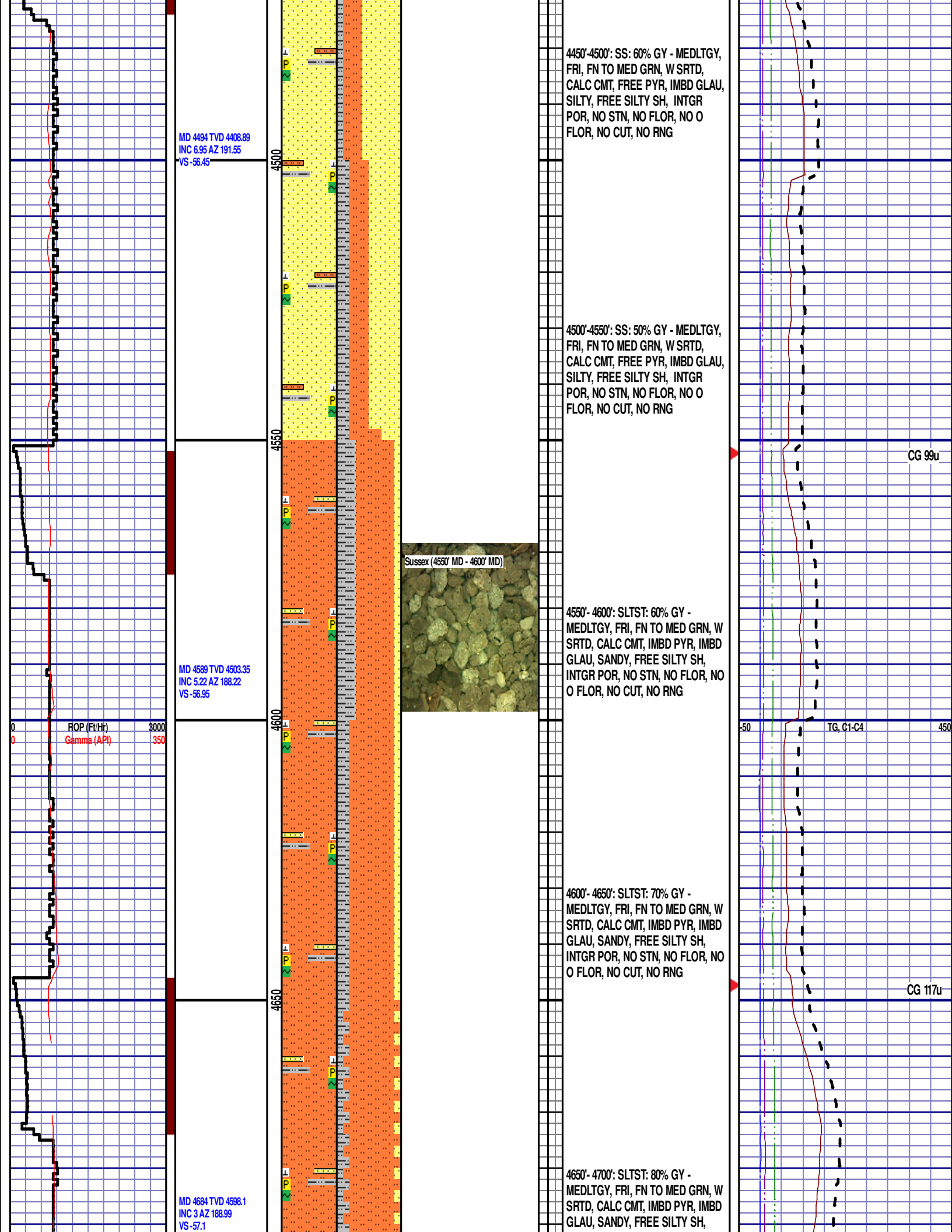
Sussex (4250' MD - 4300' MD)

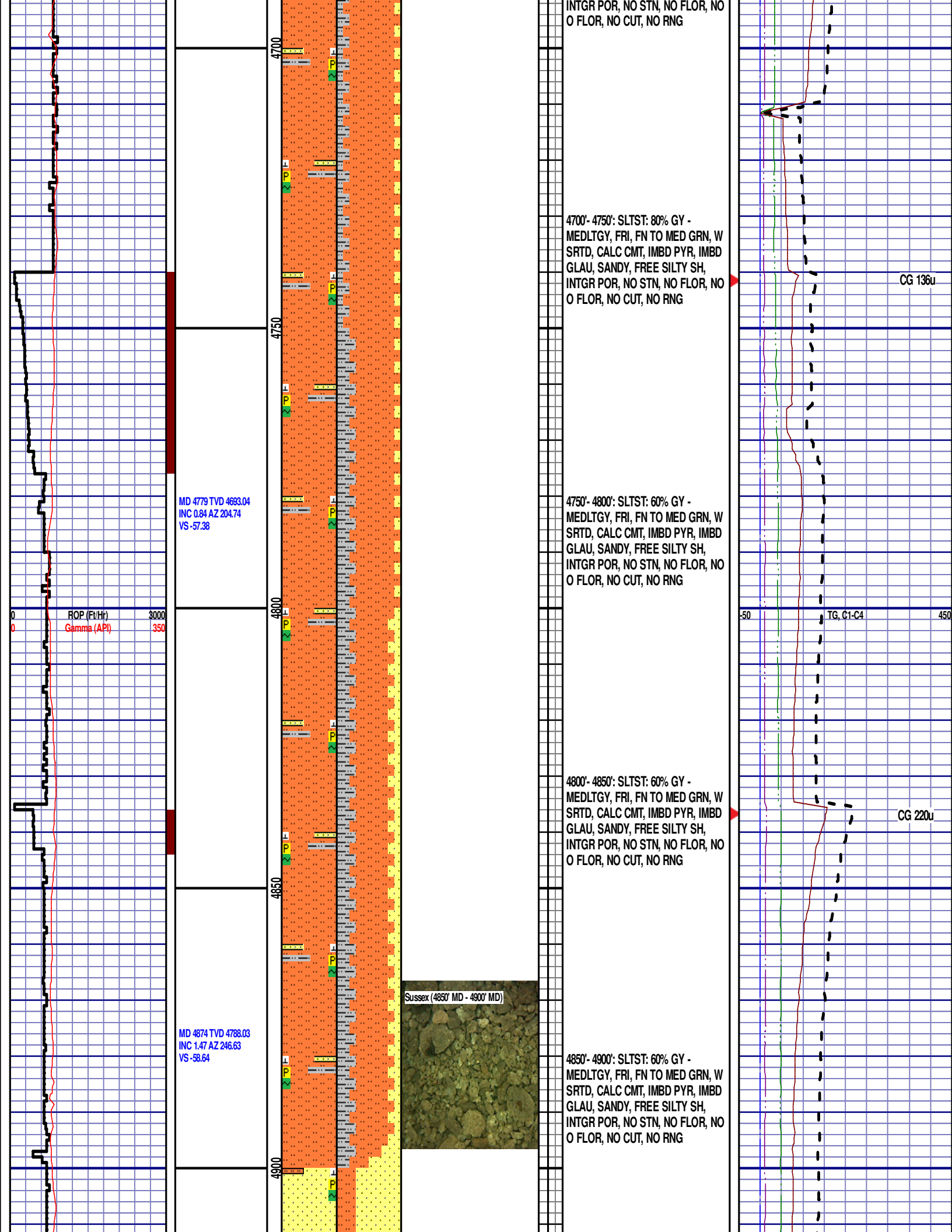
4250'- 4300': SLTST: 90% GY - MEDLTGY, FRI, FN TO MED GRN, W SRTD, CALC CMT, IMBD PYR, IMBD GLAU, SANDY, INTGR POR, NO STN, NO FLOR, NO O FLOR, NO CUT, NO RNG

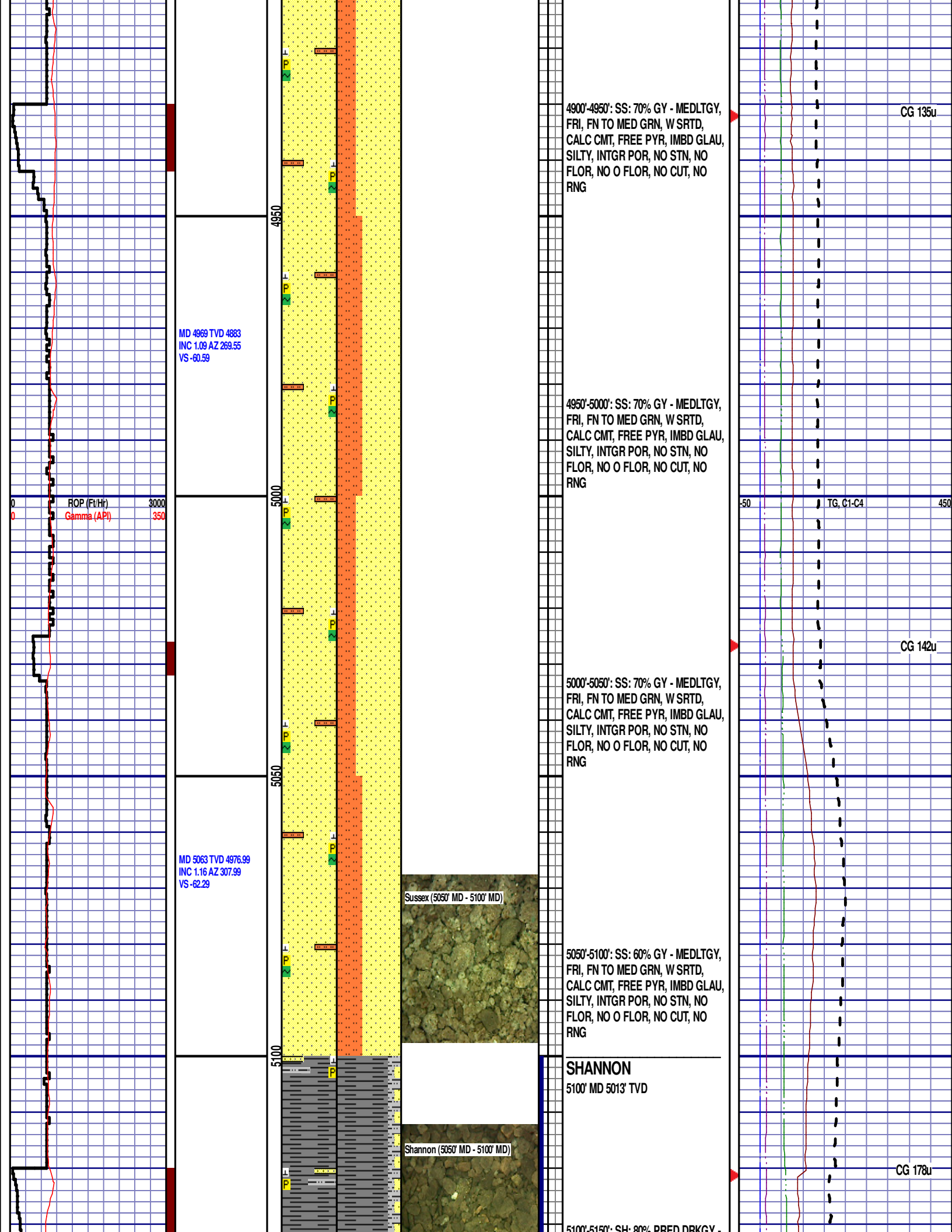
4300'- 4350': SLTST: 90% GY - MEDLTGY, FRI, FN TO MED GRN, W SRTD, CALC CMT, IMBD PYR, IMBD GLAU, SANDY, INTGR POR, NO STN, NO FLOR, NO O FLOR, NO CUT, NO RNG

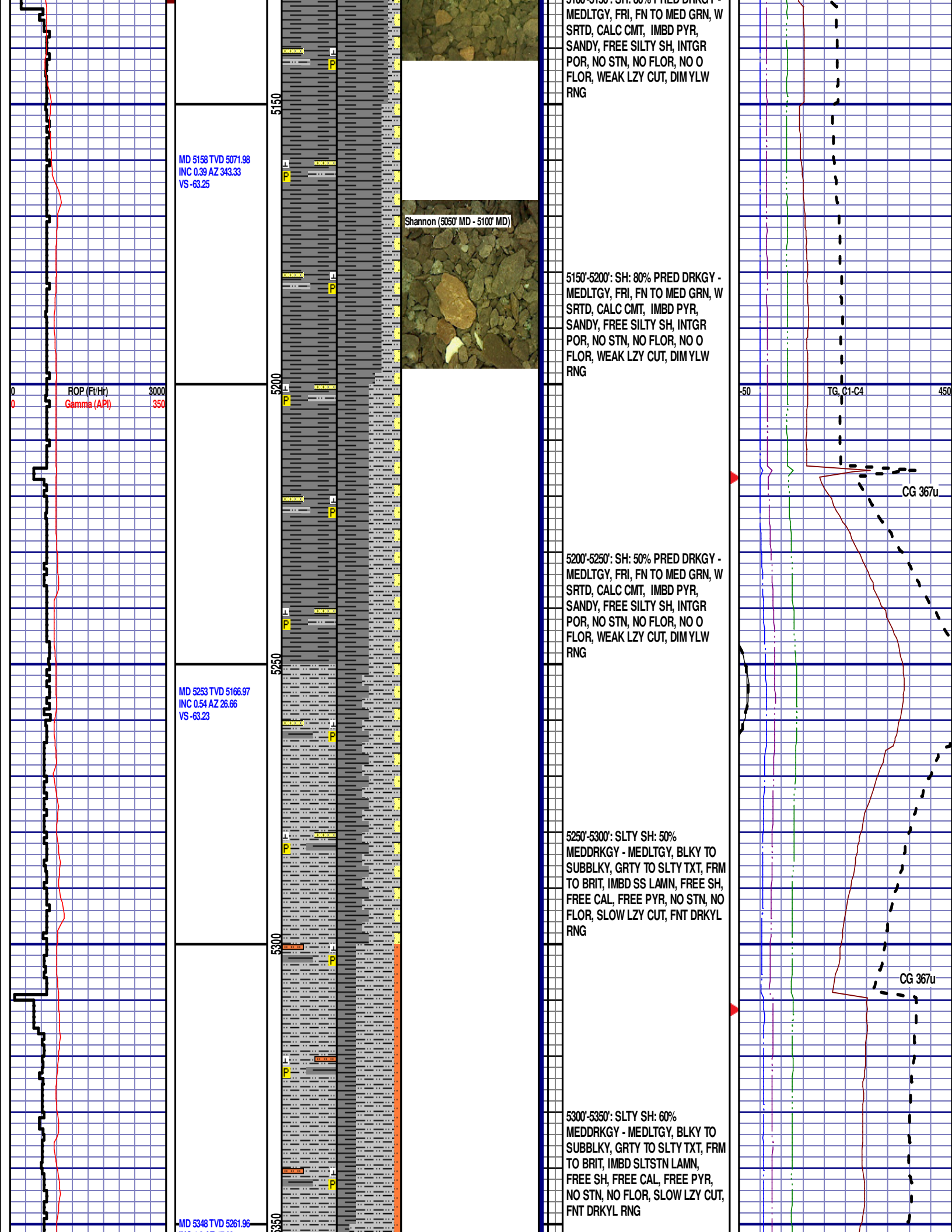
4350'- 4400': SLTST: 80% GY - MEDLTGY, FRI, FN TO MED GRN, W SRTD, CALC CMT, IMBD PYR, IMBD GLAU, SANDY, FREE SILTY SH, INTGR POR, NO STN, NO FLOR, NO O FLOR, NO CUT, NO RNG

4400'- 4450': SS: 50% GY - MEDLTGY, FRI, FN TO MED GRN, W SRTD, CALC CMT, FREE PYR, IMBD GLAU, SILTY, FREE SILTY SH, INTGR POR, NO STN, NO FLOR, NO O FLOR, NO CUT, NO RNG









INC 1.2 AZ 17.03
VS -62.91

ROP (Ft/Hr)
Gamma (API)

3000
350

MD 5443 TVD 5356.96
INC 0.42 AZ 214.55
VS -62.9

MD 5537 TVD 5450.96
INC 0.24 AZ 11.21
VS -63.05

5400

5450

5500

5550

Shannon (5450' MD - 5500' MD)



5350'-5400': SLTY SH: 70%
MEDDRKGY - MEDLTGY, BLKY TO
SUBBLKY, GRTY TO SLTY TXT, FRM
TO BRIT, IMBD SLTSTN LAMN,
FREE SH, FREE CAL, FREE PYR,
IMBD GLAU, NO STN, NO FLOR,
SLOW LZY CUT, FNT DRKYL RNG

5400'-5450': SLTY SH: 70%
MEDDRKGY - MEDLTGY, BLKY TO
SUBBLKY, GRTY TO SLTY TXT, FRM
TO BRIT, IMBD SLTSTN LAMN,
FREE SH, FREE CAL, FREE PYR,
NO STN, NO FLOR, SLOW LZY CUT,
FNT DRKYL RNG

5450'-5500': SLTY SH: 60%
MEDDRKGY - MEDLTGY, BLKY TO
SUBBLKY, GRTY TO SLTY TXT, FRM
TO BRIT, IMBD SLTSTN LAMN,
FREE SH, FREE CAL, FREE PYR,
NO STN, NO FLOR, SLOW LZY CUT,
FNT DRKYL RNG

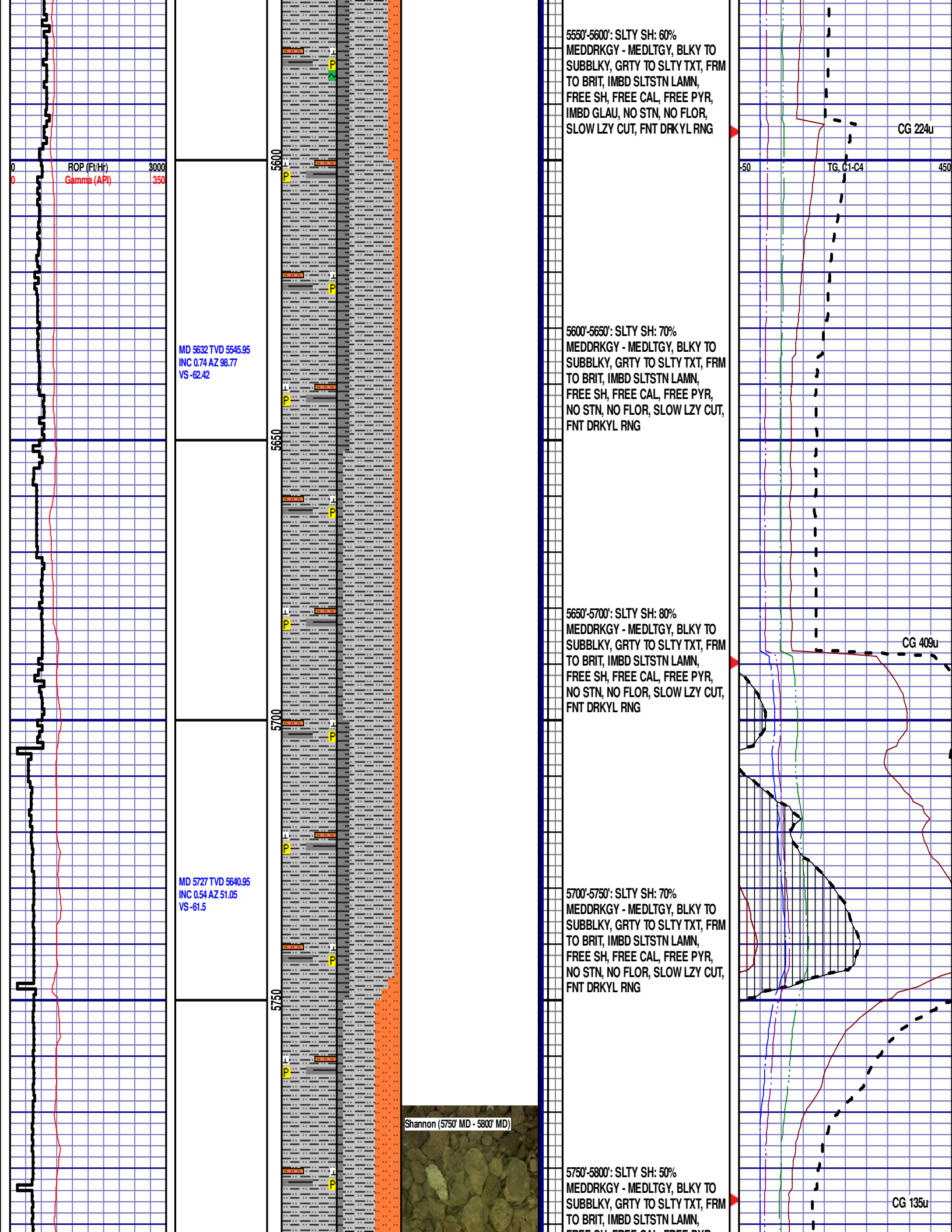
5500'-5550': SLTY SH: 60%
MEDDRKGY - MEDLTGY, BLKY TO
SUBBLKY, GRTY TO SLTY TXT, FRM
TO BRIT, IMBD SLTSTN LAMN,
FREE SH, FREE CAL, FREE PYR,
NO STN, NO FLOR, SLOW LZY CUT,
FNT DRKYL RNG

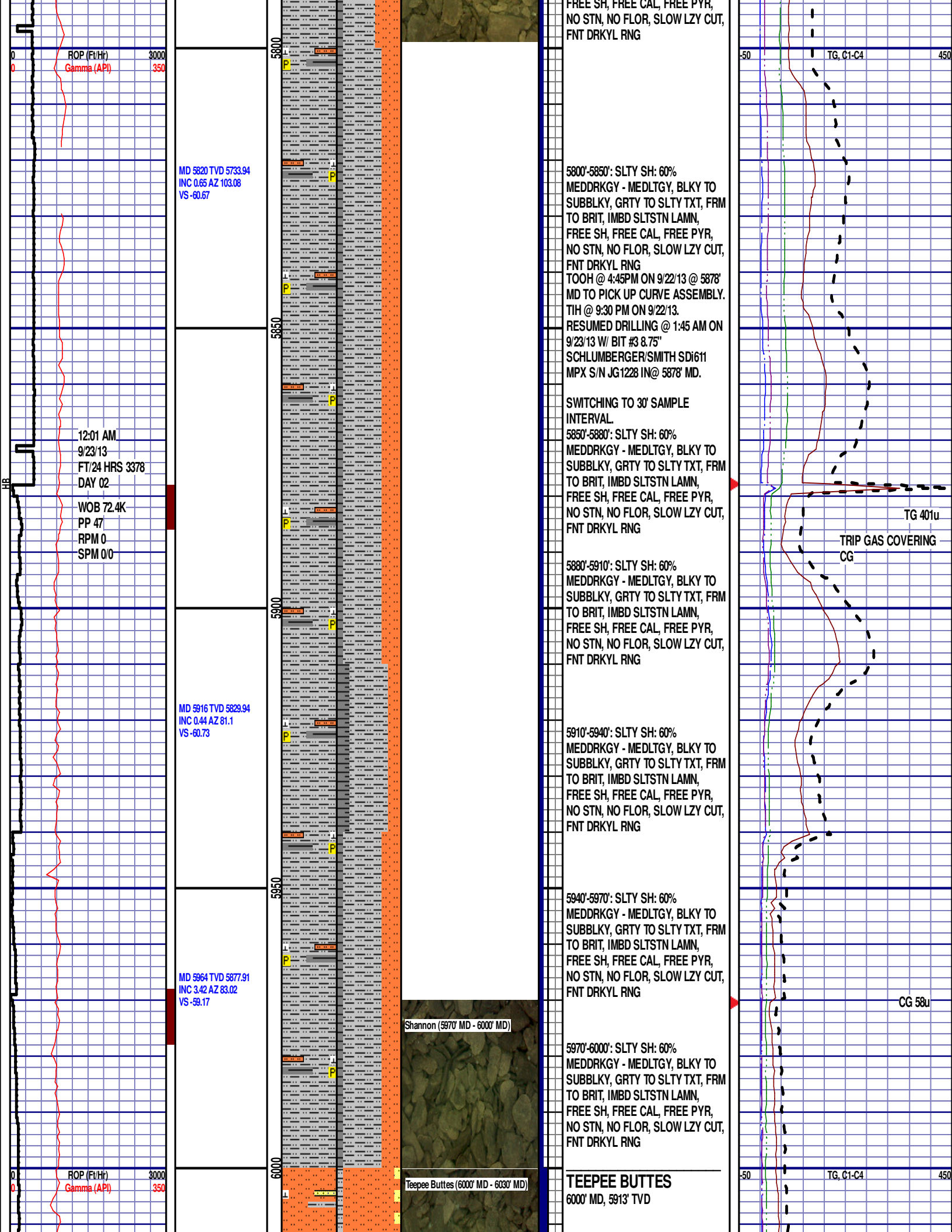
-50

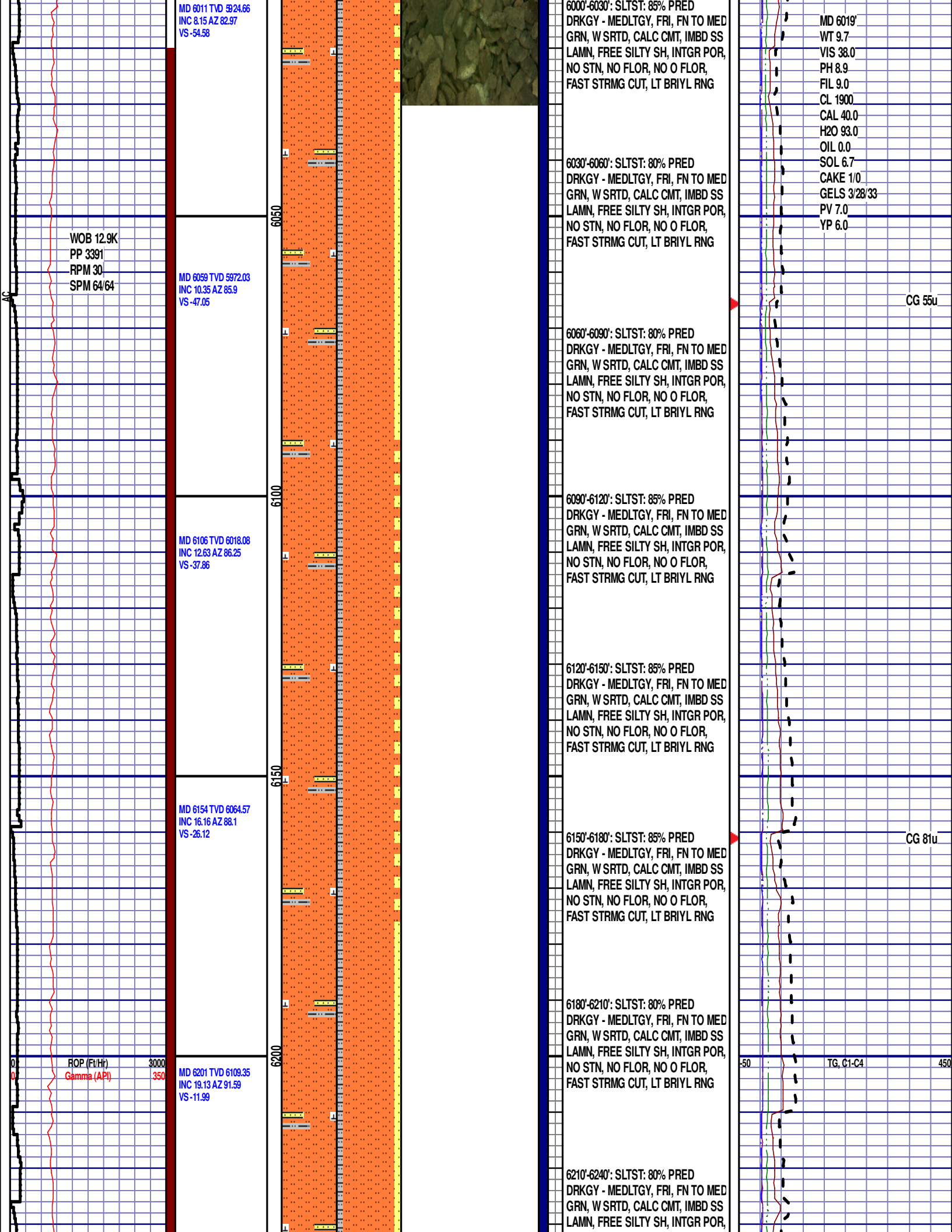
TG, C1-C4

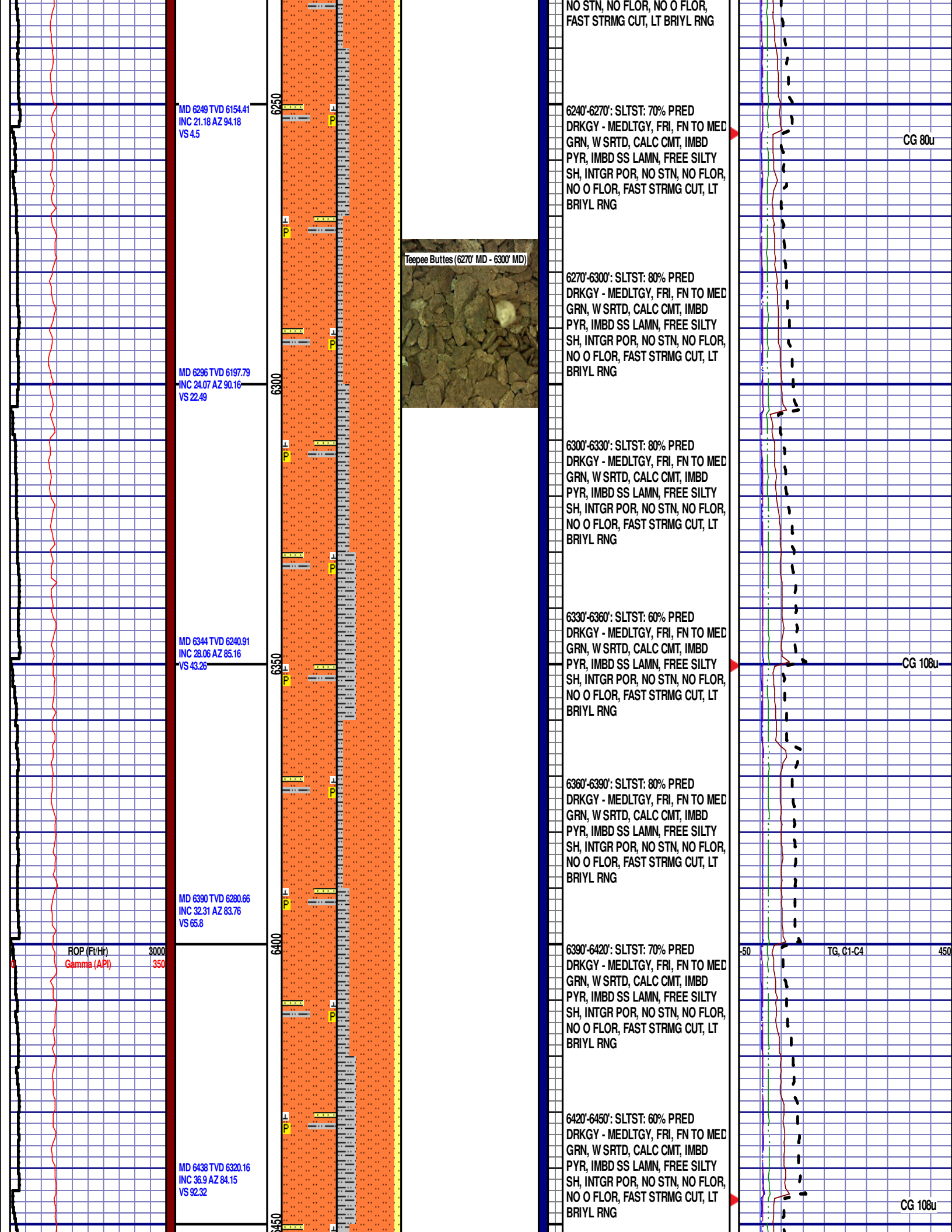
CG 197u

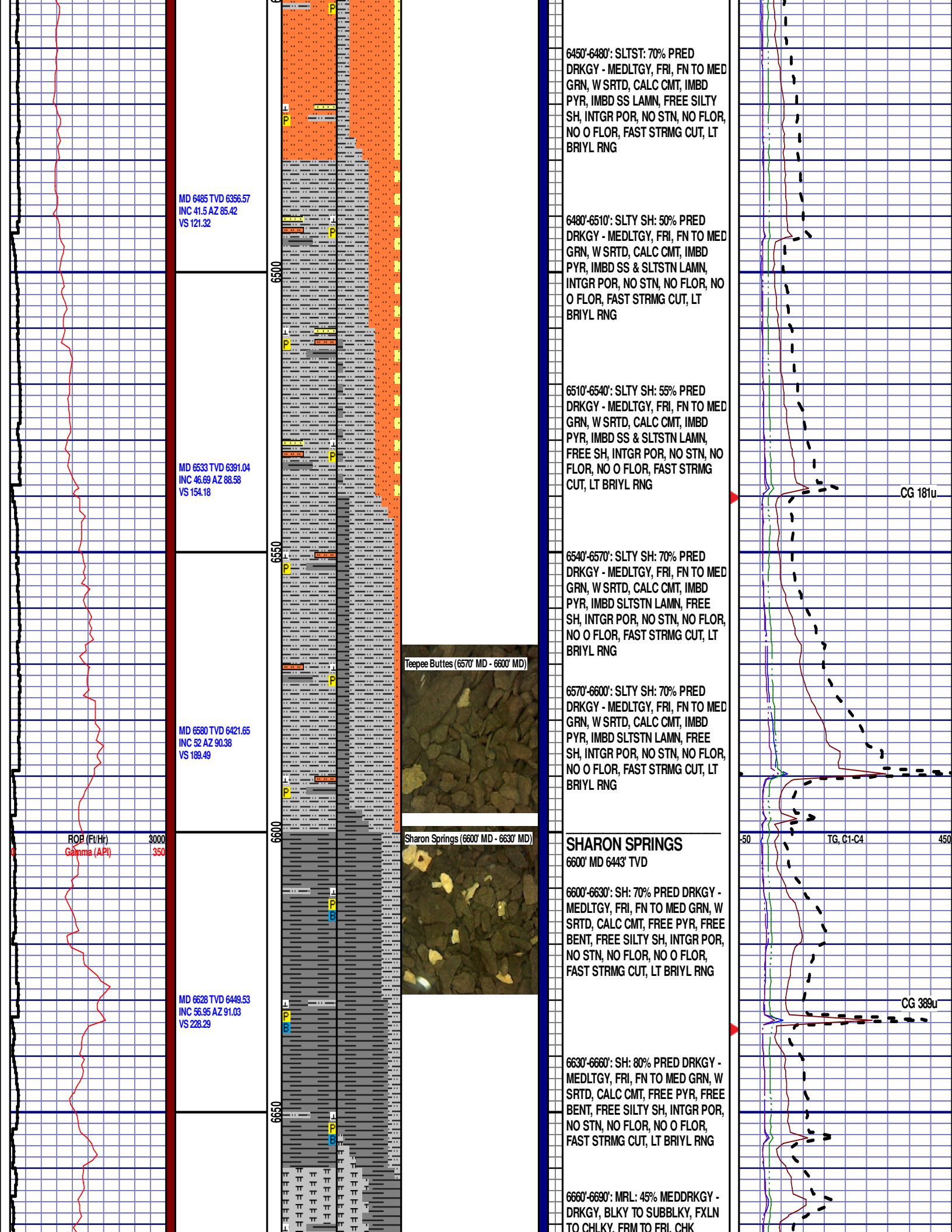
CG 414u







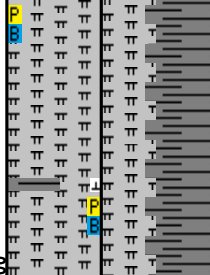




MD 6675 TVD 6473.48
INC 61.76 AZ 90.85
VS 268.47

6700

50



FRMWKR, IMBD CAL, FREE CAL,
FREE PYR, FREE BENT, FREE SH,
MOD GRYSBLK STN, 10% LTOR
FLOR, FNT BLSHWT O FLOR,
IMMED STRMG CUT, BRIYL PNG

END OF VERTICAL LOG @ 6700' MD
ON 9/23/13. CONTINUED ON
HORIZONTAL LOG.

