

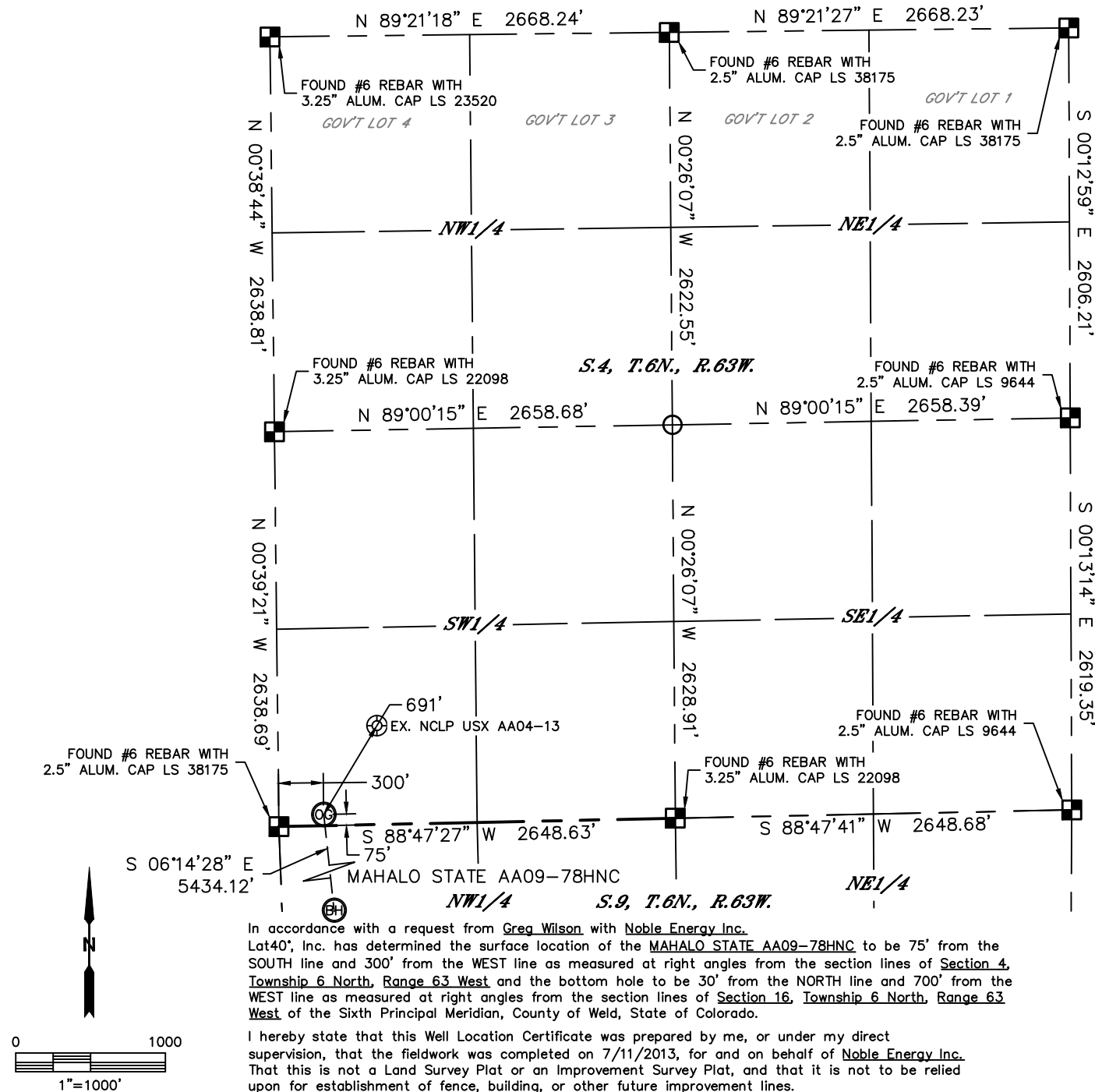


Lat40°, Inc. 1635 Foxtrail Drive, Suite 325 Loveland, CO 970-776-3321

# WELL LOCATION CERTIFICATE

THIS MAP DOES NOT REPRESENT A BOUNDARY SURVEY

SECTION: 4  
TOWNSHIP: 6N  
RANGE: 63W



In accordance with a request from Greg Wilson with Noble Energy Inc. Lat40°, Inc. has determined the surface location of the MAHALO STATE AA09-78HNC to be 75' from the SOUTH line and 300' from the WEST line as measured at right angles from the section lines of Section 4, Township 6 North, Range 63 West and the bottom hole to be 30' from the NORTH line and 700' from the WEST line as measured at right angles from the section lines of Section 16, Township 6 North, Range 63 West of the Sixth Principal Meridian, County of Weld, State of Colorado.

I hereby state that this Well Location Certificate was prepared by me, or under my direct supervision, that the fieldwork was completed on 7/11/2013, for and on behalf of Noble Energy Inc. That this is not a Land Survey Plat or an Improvement Survey Plat, and that it is not to be relied upon for establishment of fence, building, or other future improvement lines.

#### NOTE:

- 1) Bearings shown are Grid Bearings of the Colorado State Plane Coordinate System, North Zone, North American Datum 1983/2007. The lineal dimensions as contained herein are based upon the "U.S. Survey Foot."
- 2) Ground elevations are based on an observed GPS elevation (NAVD 1988 DATUM).
- 3) IMPROVEMENTS: See LOCATION DRAWING for all visible improvements within 500' of disturbed area.
- 4) SURFACE USE: CROPLAND
- 5) INSTRUMENT OPERATOR: ADAM KELLY
- 6) NEAREST EXISTING WELL: NCLP USX AA04-13, 691'
- NEAREST CULTURAL ITEMS:  
BUILDING: 5280'+  
BUILDING UNIT: 5280'+  
HIGH OCCUPANCY BUILDING UNIT: 1001'+  
DESIGNATED OUTSIDE ACTIVITY AREA: 1001'+  
PUBLIC ROAD: (HIGHWAY 392) 3254' SE  
ABOVEGROUND UTILITY: 3196' SE  
RAILROAD: 5280'+  
PROPERTY LINE: 2349' E

#### SURFACE LOCATION

LAT: 40.50873N  
LONG: 104.45015W  
PDOP: 1.8  
ELEV: 4707'  
1/4,1/4: SW1/4SW1/4

#### BOTTOM HOLE

LAT: 40.49389N  
LONG: 104.44825W

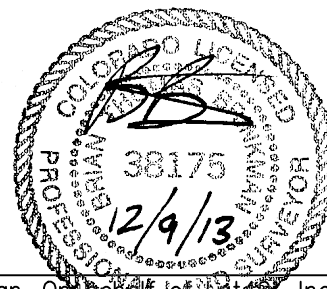
#### LEGEND

- = ALIQUOT MONUMENT AS DESCRIBED  
○ = CALCULATED POSITION

#### SHEET 1 OF 3

Brian T. Brinkman—On behalf of Lat40°, Inc.  
Colorado Licensed Professional  
Land Surveyor No. 38175

DATE: 12/9/2013  
PROJECT#: 2013042



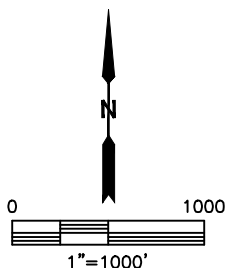
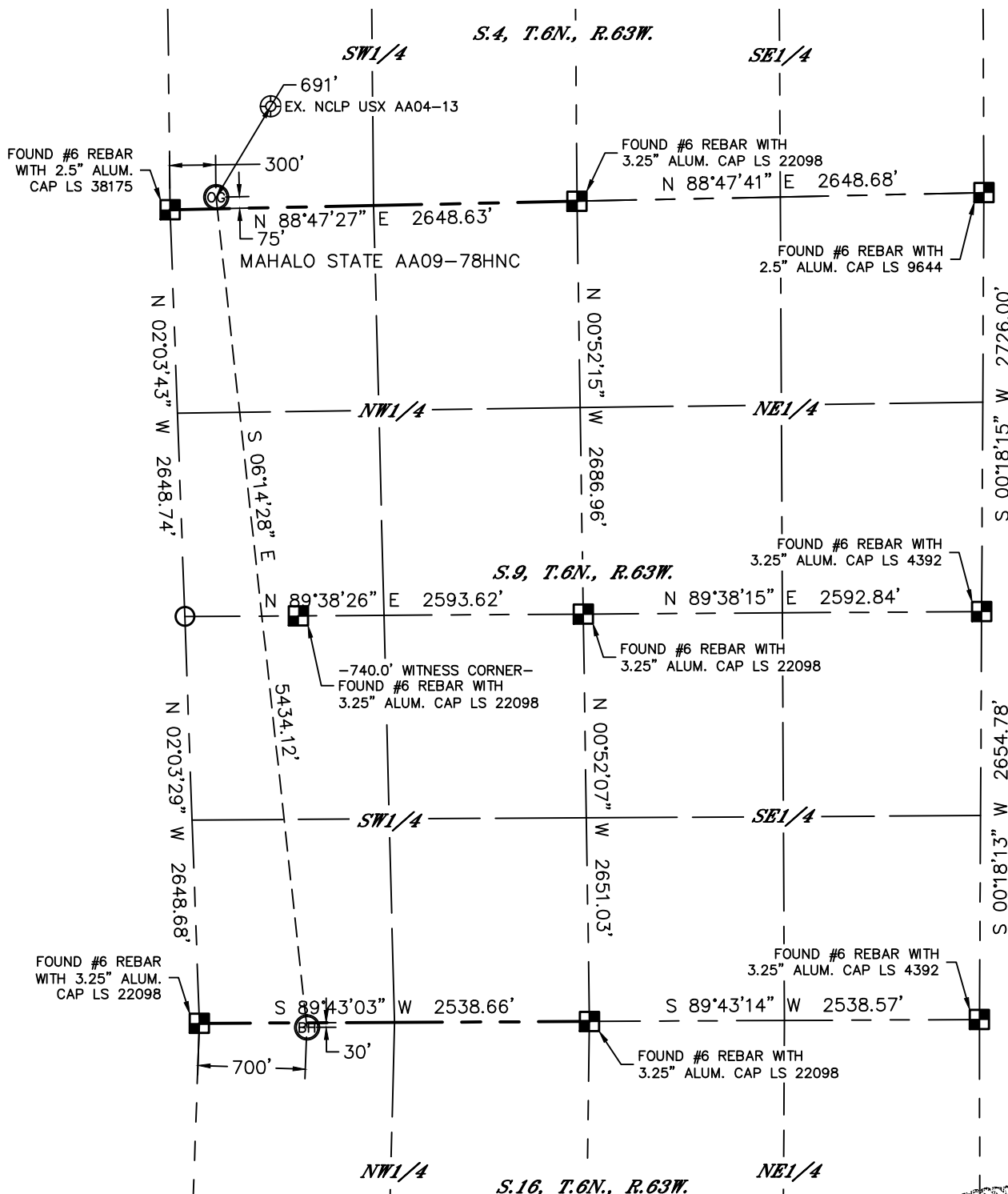


Lat40°, Inc. 1635 Foxtrail Drive, Suite 325 Loveland, CO 970-776-3321

# WELL LOCATION CERTIFICATE

THIS MAP DOES NOT REPRESENT A BOUNDARY SURVEY

SECTION: 4  
TOWNSHIP: 6N  
RANGE: 63W



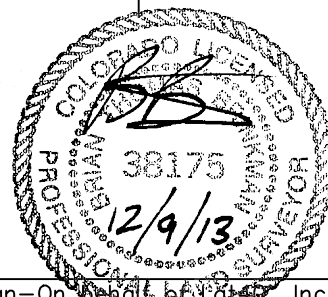
## LEGEND

- = ALIQUOT MONUMENT AS DESCRIBED
- = CALCULATED POSITION

## SHEET 2 OF 3

Brian T. Brinkman—On behalf of Lat40°, Inc.  
Colorado Licensed Professional Land Surveyor No. 38175

DATE: 12/9/2013  
PROJECT#: 2013042



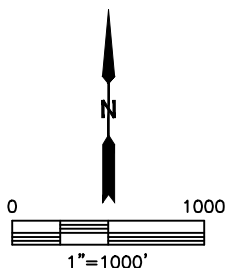
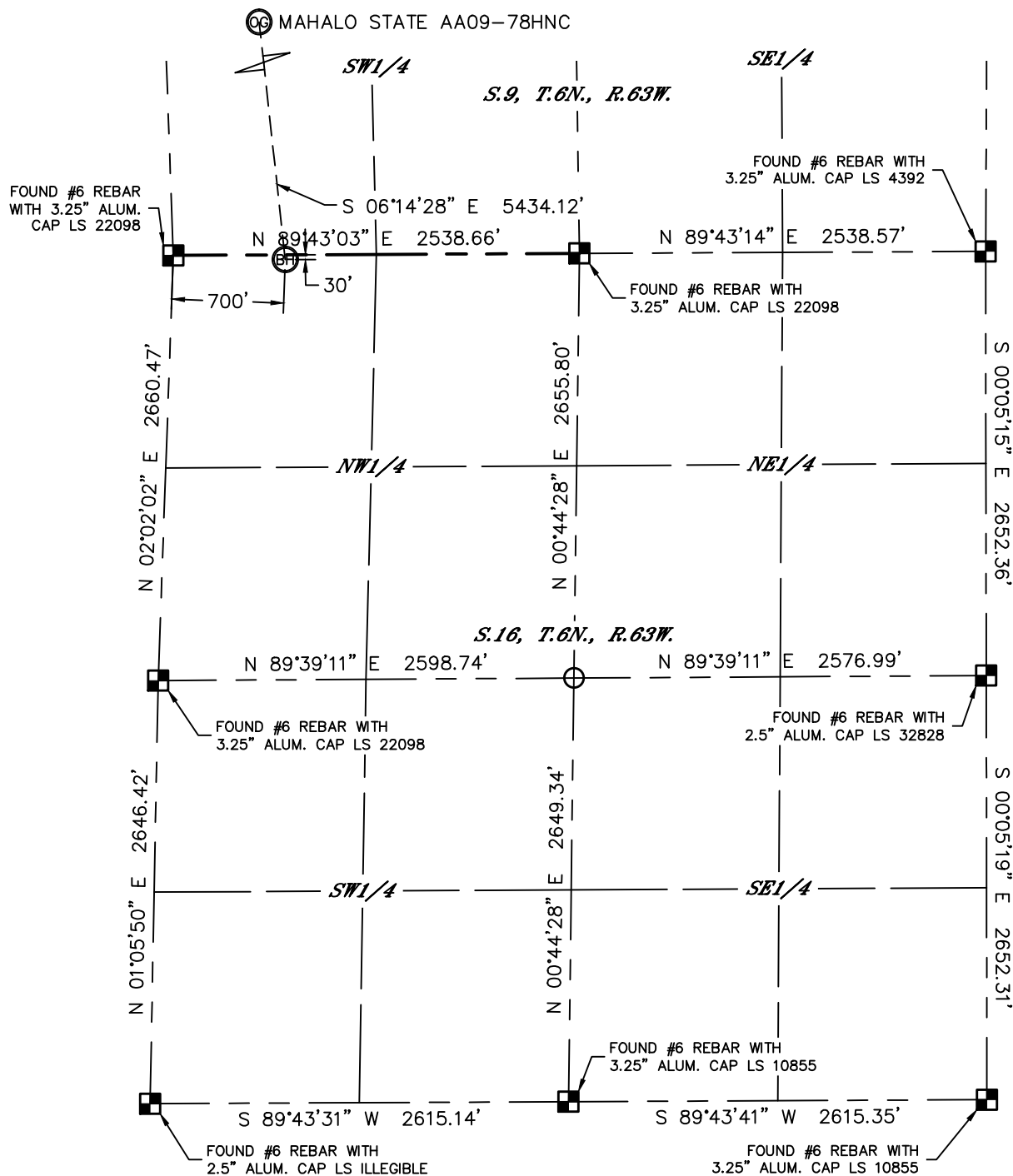


Lat40°, Inc. 1635 Foxtrail Drive, Suite 325 Loveland, CO 970-776-3321

# WELL LOCATION CERTIFICATE

THIS MAP DOES NOT REPRESENT A BOUNDARY SURVEY

SECTION: 4  
TOWNSHIP: 6N  
RANGE: 63W



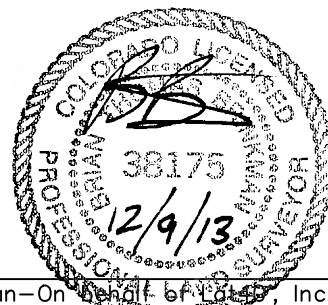
## LEGEND

- = ALIQUOT MONUMENT AS DESCRIBED
- = CALCULATED POSITION

**SHEET 3 OF 3**

Brian T. Brinkman—On behalf of Lat40°, Inc.  
Colorado Licensed Professional Land Surveyor No. 38175

DATE: 12/9/2013  
PROJECT#: 2013042

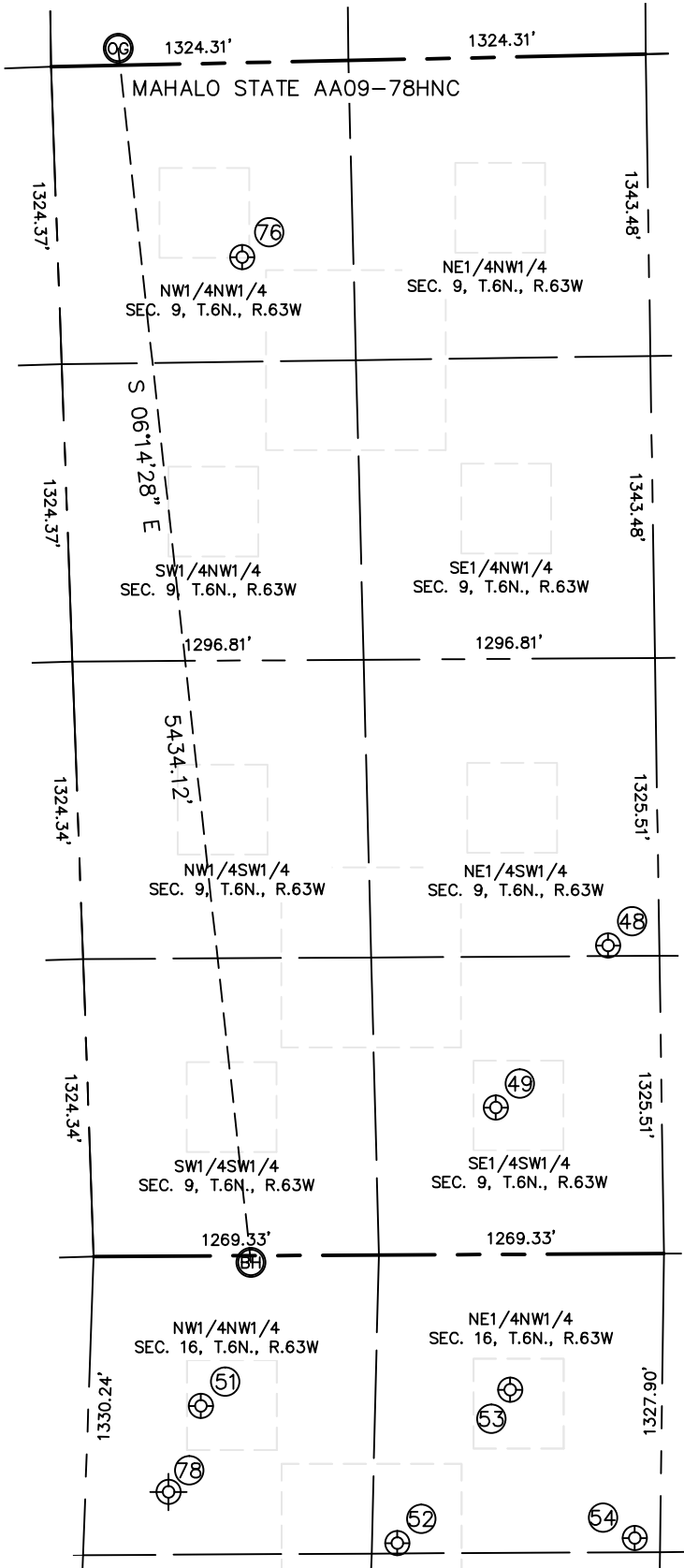




Lat40°, Inc. 1635 Foxtrail Drive, Suite 325 Loveland, CO 970-776-3321

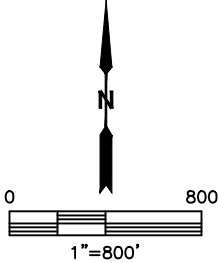
SITE SKETCH  
MAHALO STATE AA09-78HNC

SECTION: 4  
TOWNSHIP: 6N  
RANGE: 63W



WELL #	WELL NAME	SHL FOOTAGE			SHL LAT °	SHL LONG °	PDOP	ELEV (FT.)	1/4/1/4
48	BASHORPC AA 9-14	FSL	FSL	FSL	40.49771	104.44247	2.1	4687	NESW
49	BASHORPC AA 9-14	653	1813	FWL	40.49575	104.44430	1.7	4686	SESW
51	BASHORSTATE AA 16-4	667	501	FWL	40.49215	104.44908	1.5	4684	NWNW
52	BASHORSTATE AA 16-19	1283	1399	FNL	40.49044	104.44596	1.8	4683	NENW
53	BASHORSTATE AA 16-3	603	1874	FNL	40.49230	104.44740	1.8	4681	NENW
54	BASHORSTATE 16-18	1265	2451	FNL	40.49047	104.44216	1.9	4686	NENW
76	GIBSON 11-9	866	820	FNL	40.50617	104.44820	1.6	4704	NWNW
78	GUNNERSTATE AA #16-99HZ (P&A)	1050	370	FNL	40.49107	-104.45014	NA	4682	NWNW

NOTE: THE ABANDONED WELL DATA SHOWN IN RED ABOVE WAS OBTAINED FROM COGCC SCOUT CARDS.



DATE: 12/6/2013  
PROJECT#: 2013042