

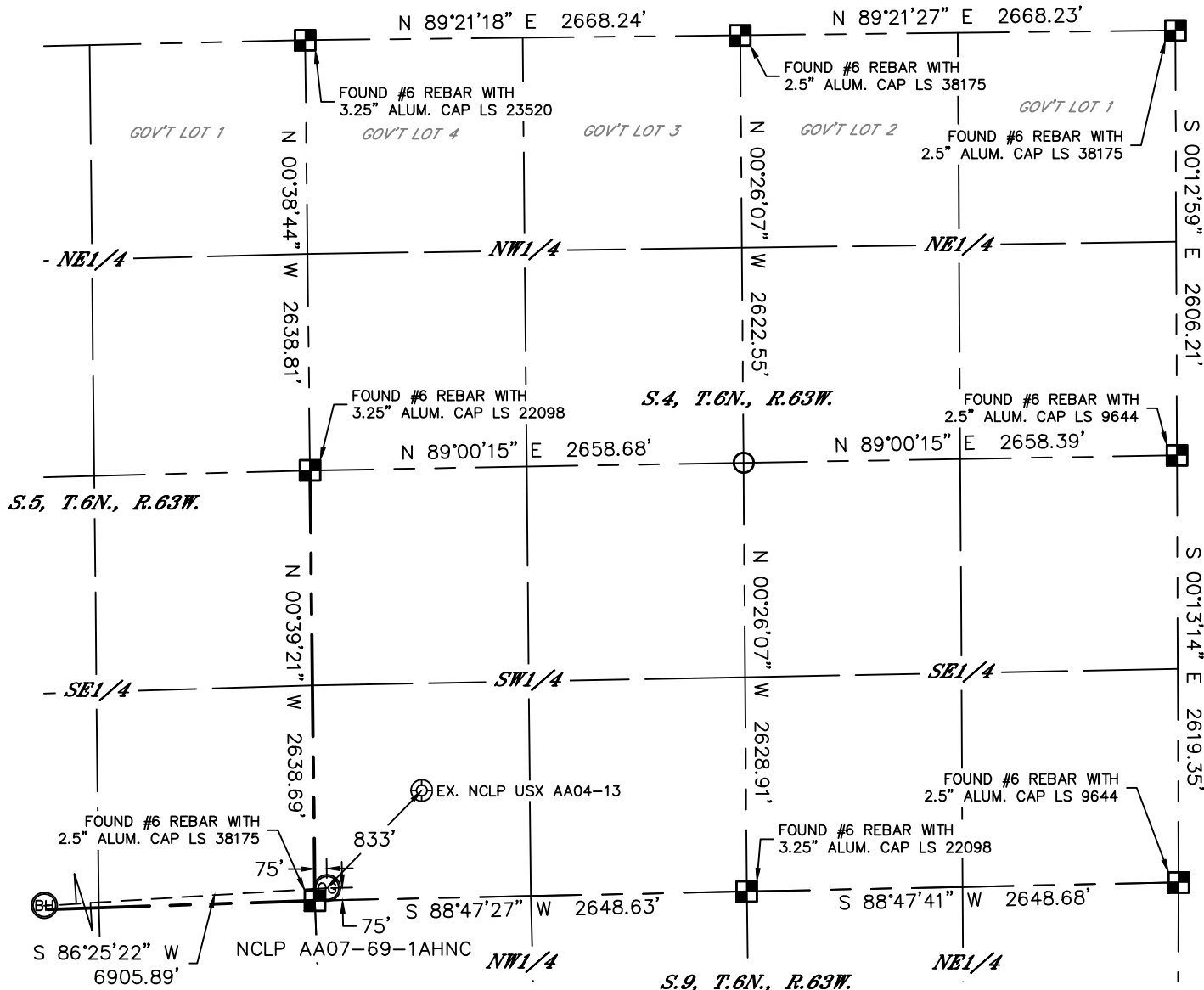


Lat40°, Inc. 1635 Foxtrail Drive, Suite 325 Loveland, CO 970-776-3321

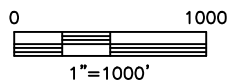
# WELL LOCATION CERTIFICATE

THIS MAP DOES NOT REPRESENT A BOUNDARY SURVEY

SECTION: 4  
TOWNSHIP: 6N  
RANGE: 63W



NE1/4  
S.8, T.6N., R.63W.



In accordance with a request from Greg Wilson with Noble Energy Inc. Lat40°, Inc. has determined the surface location of the NCLP AA07-69-1AHNC to be 75' from the SOUTH line and 75' from the WEST line as measured at right angles from the section lines of Section 4, Township 6 North, Range 63 West and the bottom hole to be 165' from the NORTH line and 1530' from the EAST line as measured at right angles from the section lines of Section 7, Township 6 North, Range 63 West of the Sixth Principal Meridian, County of Weld, State of Colorado.

I hereby state that this Well Location Certificate was prepared by me, or under my direct supervision, that the fieldwork was completed on 7/11/2013, for and on behalf of Noble Energy Inc. That this is not a Land Survey Plat or an Improvement Survey Plat, and that it is not to be relied upon for establishment of fence, building, or other future improvement lines.

#### NOTE:

- 1) Bearings shown are Grid Bearings of the Colorado State Plane Coordinate System, North Zone, North American Datum 1983/2007. The lineal dimensions as contained herein are based upon the "U.S. Survey Foot."
- 2) Ground elevations are based on an observed GPS elevation (NAVD 1988 DATUM).
- 3) IMPROVEMENTS: See LOCATION DRAWING for all visible improvements within 500' of disturbed area.
- 4) SURFACE USE: CROPLAND
- 5) INSTRUMENT OPERATOR: ADAM KELLY
- 6) NEAREST EXISTING WELL: NCLP USX AA04-13, 833'
- NEAREST CULTURAL ITEMS:  
BUILDING: ±5204' NW  
BUILDING UNIT: ±5204' NW  
HIGH OCCUPANCY BUILDING UNIT: 1001'+  
DESIGNATED OUTSIDE ACTIVITY AREA: 1001'+  
PUBLIC ROAD: (HIGHWAY 392) 3409' SE  
ABOVEGROUND UTILITY: 3351' SE  
RAILROAD: 5280'+  
PROPERTY LINE: 2563' N

#### SURFACE LOCATION

LAT: 40.50873°N  
LONG: 104.45095°W  
PDOP: 1.7  
ELEV: 4703'  
1/4,1/4: SW1/4SW1/4

#### BOTTOM HOLE

LAT: 40.50777°N  
LONG: 104.47575°W

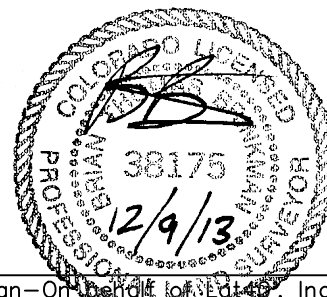
#### LEGEND

- = ALIQUOT MONUMENT AS DESCRIBED  
○ = CALCULATED POSITION

#### SHEET 1 OF 3

Brian T. Brinkman—On behalf of Lat40°, Inc.

Colorado Licensed Professional Land Surveyor No. 38175  
DATE: 12/9/2013  
PROJECT#: 2013042



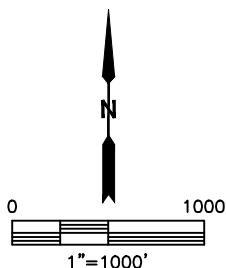
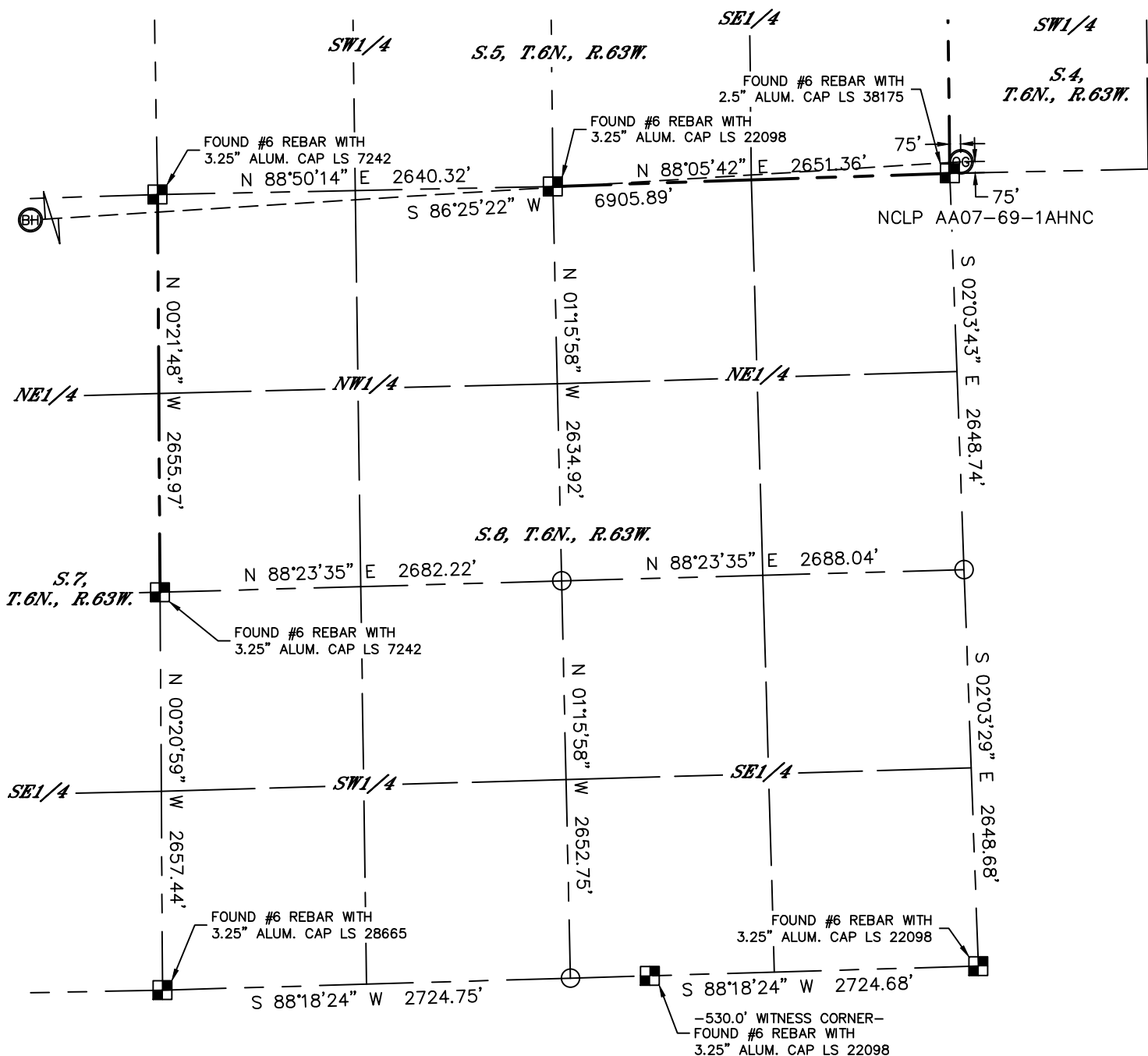


Lat40°, Inc. 1635 Foxtrail Drive, Suite 325 Loveland, CO 970-776-3321

# WELL LOCATION CERTIFICATE

THIS MAP DOES NOT REPRESENT A BOUNDARY SURVEY

SECTION: 4  
TOWNSHIP: 6N  
RANGE: 63W



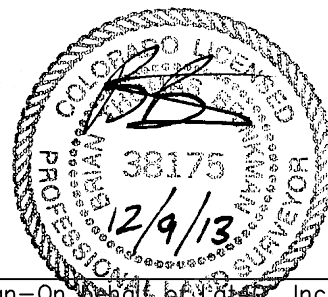
## LEGEND

- = ALIQUOT MONUMENT AS DESCRIBED
- = CALCULATED POSITION

SHEET 2 OF 3

Brian T. Brinkman—On behalf of Lat40°, Inc.  
Colorado Licensed Professional Land Surveyor No. 38175

DATE: 12/9/2013  
PROJECT#: 2013042



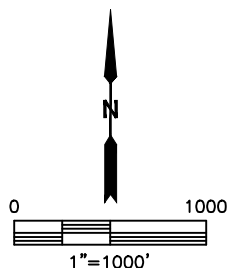
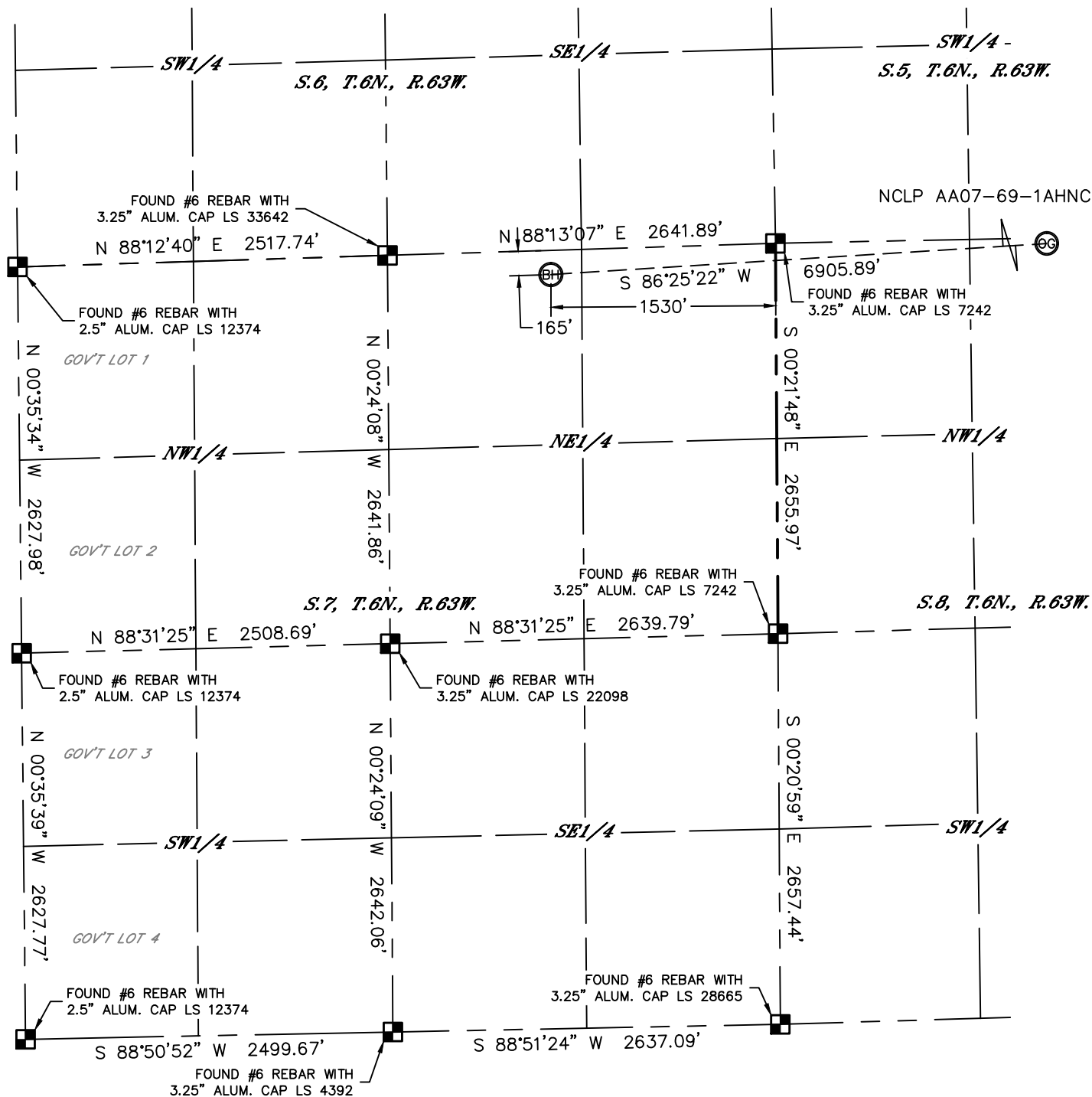


Lat40°, Inc. 1635 Foxtrail Drive, Suite 325 Loveland, CO 970-776-3321

# WELL LOCATION CERTIFICATE

THIS MAP DOES NOT REPRESENT A BOUNDARY SURVEY

SECTION: 4  
TOWNSHIP: 6N  
RANGE: 63W



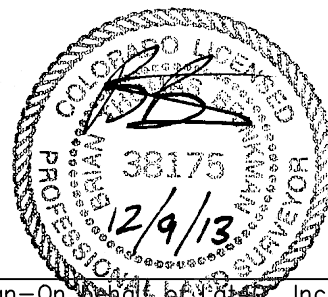
## LEGEND

- = ALIQUOT MONUMENT AS DESCRIBED
- = CALCULATED POSITION

## SHEET 3 OF 3

Brian T. Brinkman—On Behalf of Lat40°, Inc.  
Colorado Licensed Professional Land Surveyor No. 38175

DATE: 12/9/2013  
PROJECT#: 2013042



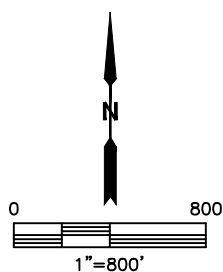
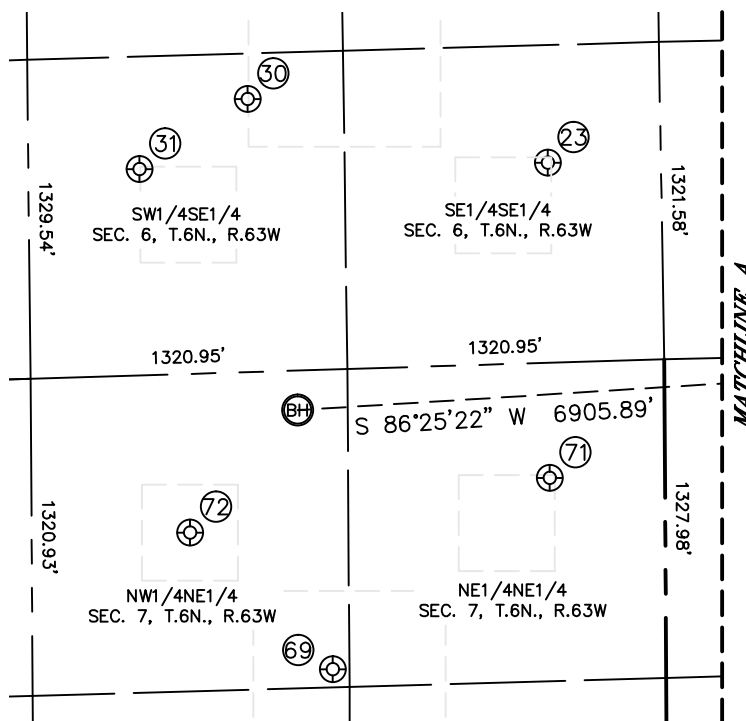
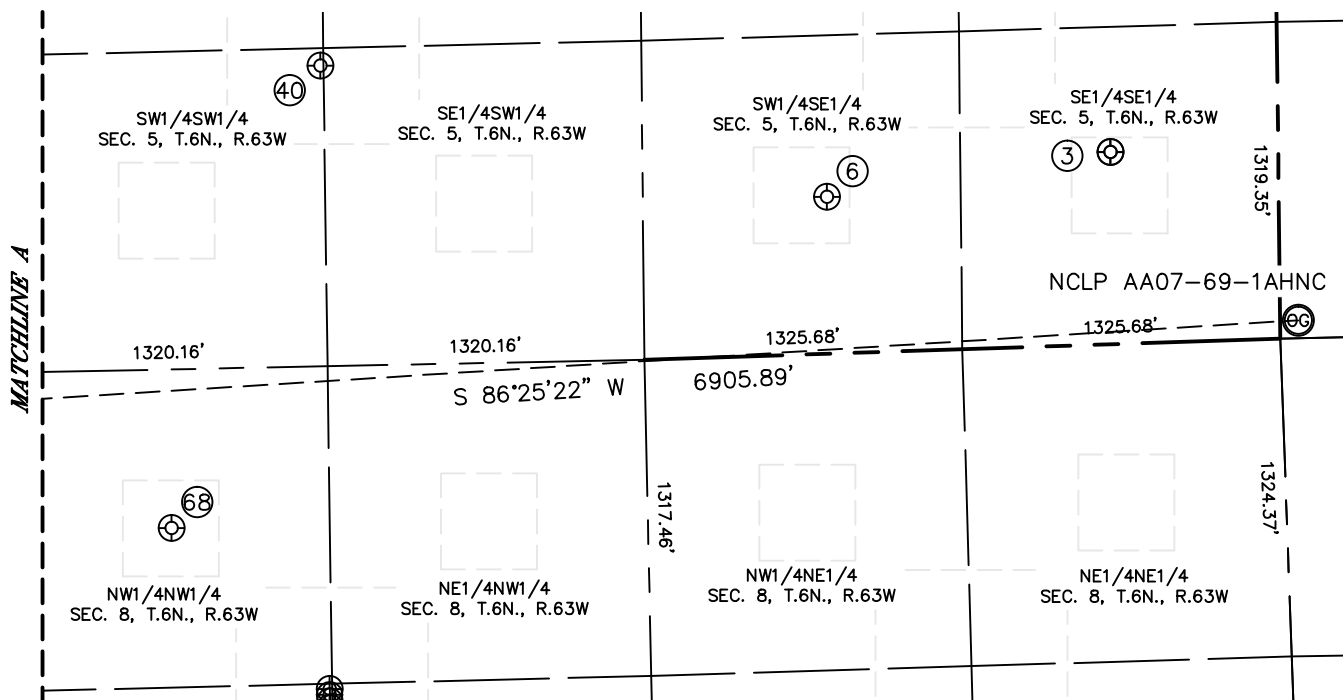


Lat40°, Inc. 1635 Foxtrail Drive, Suite 325 Loveland, CO 970-776-3321

# SITE SKETCH

NCLP AA07-69-1AHNC

SECTION: 4  
TOWNSHIP: 6N  
RANGE: 63W



SHEET 1 OF 2

DATE: 12/6/2013  
PROJECT#: 2013042



Lat40°, Inc. 1635 Foxtrail Drive, Suite 325 Loveland, CO 970-776-3321

# SITE SKETCH

NCLP AA07-69-1AHNC

SECTION: 4  
TOWNSHIP: 6N  
RANGE: 63W

WELL #	WELL NAME	SHL FOOTAGE				SHL LAT °	SHL LONG °	PDOP	ELEV (FT.)	1/4/1/4
3	NCLP USX AA 5-16	800	FSL	699	FEL	40.51068	-104.45374	1.3	4712	SESE
6	CASHE USX AA 5-15	654	FSL	1883	FEL	40.51020	-104.45799	1.6	4708	SWSE
23	HAGEMIESTER 44-6	833	FSL	471	FEL	40.51056	-104.47196	1.9	4693	SESE
30	FOSS 6-45	1137	FSL	1717	FEL	40.51133	-104.47644	1.4	4695	SWSE
31	FOSS 6-43	859	FSL	2173	FEL	40.51054	-104.47808	1.6	4694	SWSE
40	FOSS - USX AA 5-25	1252	FSL	1311	FWL	40.51177	-104.46556	1.7	4698	SWSW
68	NEW CACHE 8-22	660	FNL	665	FWL	40.50651	-104.46787	2.0	4697	NWNW
69	TRINITY USX AA 7-17	1249	FNL	1390	FEL	40.50480	-104.47527	1.7	4689	NWNE
71	HAGEMEISTER USX AA 7-1	480	FNL	480	FEL	40.50696	-104.47198	2.0	4691	NENE
72	HAGEMEISTER USX AA 7-2	661	FNL	1980	FEL	40.50638	-104.47738	2.2	4694	NWNE

*SHEET 2 OF 2*

DATE: 11/5/2013  
PROJECT#: 2013042