

# Well Location Plat BAT 14C-24-07-96

Section 24, Township 7 South, Range 96 West

Northwest Corner Sec. 24  
2" Alum. Cap L.S. #17492  
2006

N 88°58'10" W

5411.26'

Northeast Corner Sec. 24  
3" Brass Cap L.S. #11643  
1982

## Note:

The measurement for determining any Designated Setback Location shall be made from the center of the Well or Production Facility nearest any Building Unit to the nearest wall or corner of such Building Unit.

Building - 260'  
Building Unit - 1386'  
HOBV - 4407'  
DOAA - N/A  
Public Road - 239'  
Above Grnd Util. - 368'  
Railroad - 4357'  
Property Line - 741'

Current Surface Land Use :  
Gas well pad



Graphic Scale in Feet  
1"=1000'

## Bottom Hole: BAT 14C-24-07-96

554' FSL

992' FWL

NAD83

Lat: 39.417066713°N

Long: 108.063747735°W

NAD27

Lat: 39.417088506°N

Long: 108.063116753°W

## Surface: BAT 14C-24-07-96

1820' FSL

2039' FWL

Gnd El= 5184

Pad El= 5184

NAD83

Lat: 39.420619068°N

Long: 108.060086437°W

NAD27

Lat: 39.420640881°N

Long: 108.059455645°W

UTM 13 NORTH

NAD 1983

NORTHING

14330431.370

EASTING

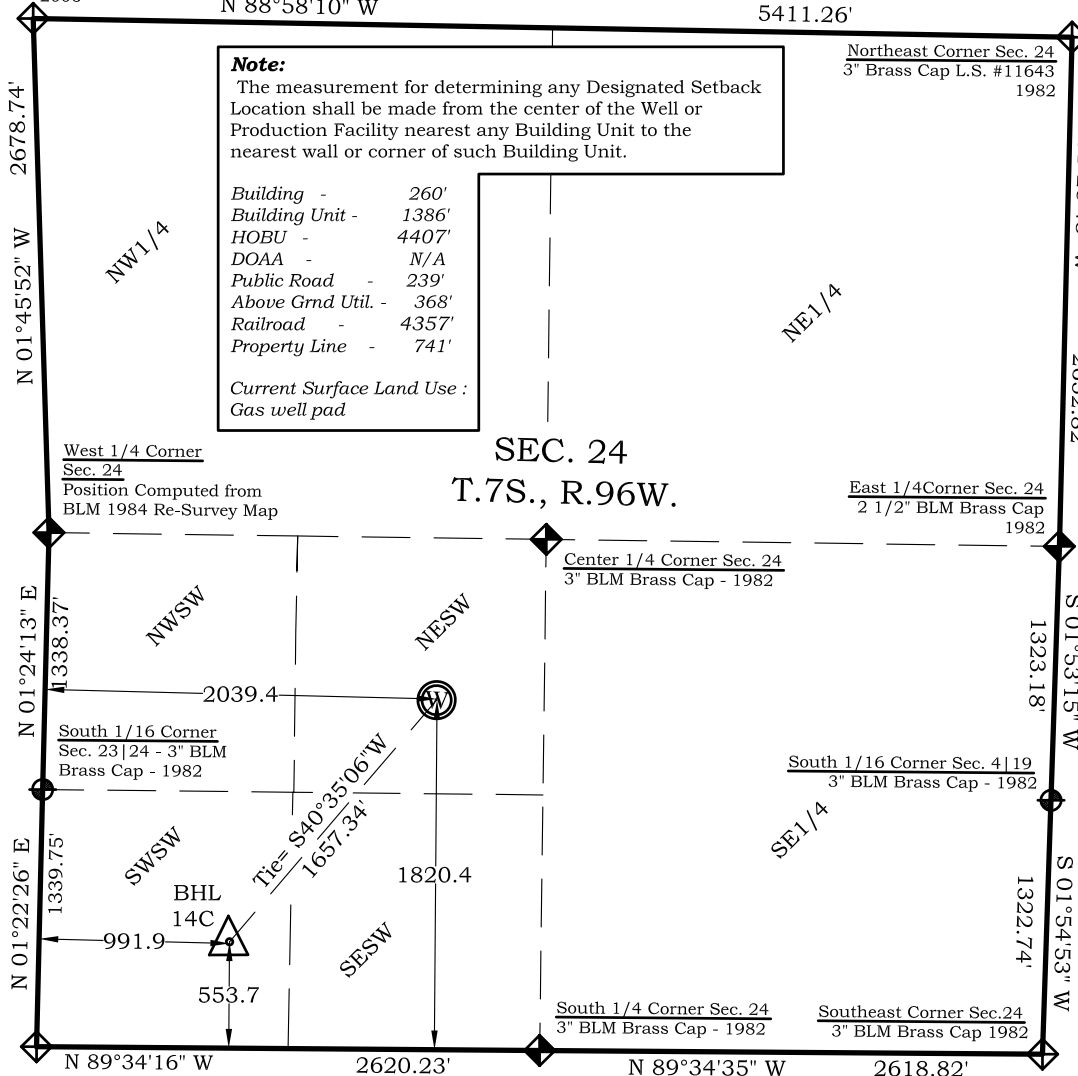
776157.448

## Legend

- Field Surveyed Section Corner
- Field Surveyed Quarter Corner
- Calculated Section Corner Location
- Field Surveyed 1/6 Corner

## Notes:

- LATITUDE AND LONGITUDE COORDINATES ARE DIFFERENTIALLY CORRECTED AND BASED ON PUBLISHED NGS CONTROL STATION "KOEPSSELL". SYSTEM: UTM ZONE: 13 NORTH DATUM: NAD 1983 (CONUS)
- ELEVATIONS ARE BASED ON NAVD OF 1983.
- ALL BOTTOM AND TOP HOLE LOCATIONS ARE MEASURED 90 DEGREES FROM SECTION LINE.
- USGS QUADRANGLE MAP "PARACHUTE".
- CURRENT SURFACE LAND USE: GAS PAD.
- PDOP AT THE TIME OF LOCATION OF SURFACE WELL = 2.4



Prepared For Ursa Operating Company, LLC  
Proposed BAT 14C-24-07-96 Well Situate in The  
NE 1/4 SW 1/4 Section 24, Township 7 South, Range 96 West  
of the 6 th. Principal Meridian, County of Garfield, State  
of Colorado.

## SURVEYOR'S CERTIFICATE

I, SCOTT E. AIBNER, A REGISTERED LAND SURVEYOR, LICENSED UNDER THE LAWS OF THE STATE OF COLORADO DO HEREBY CERTIFY THAT THE SURVEY SHOWN HEREON WAS PREPARED BY RIVER VALLEY SURVEY, INC., FOR URSA OPERATING COMPANY, LLC, IN THE PRESENCE OF MY DIRECT SUPERVISION AND THAT THIS PLAT IS A TRUE REPRESENTATION THEREOF.

SCOTT E. AIBNER  
PROFESSIONAL LAND SURVEYOR  
31143

BY: SCOTT E. AIBNER, COLORADO REG. NO. 31143



River Valley Survey, Inc.  
110 East 3rd. Street, Suite 213  
Rifle, Colorado 81650  
Ph: 970-379-7846

Project: Speakman A Pad

Field Date: 08-05-10

Date: 09-18-13

Scale: 1"= 1000'

Sheet: 1 of 1

Well Location Plat Prepared For:  
Ursa Operating Co., LLC

Situate In:  
SW 1/4 Section 24, T7S., R. 96 W. of the  
6th P.M., Garfield County, Colorado

