

WELL LOCATION CERTIFICATE

PRONGHORN F-J-17HNC

THIS MAP DOES NOT REPRESENT A BOUNDARY SURVEY

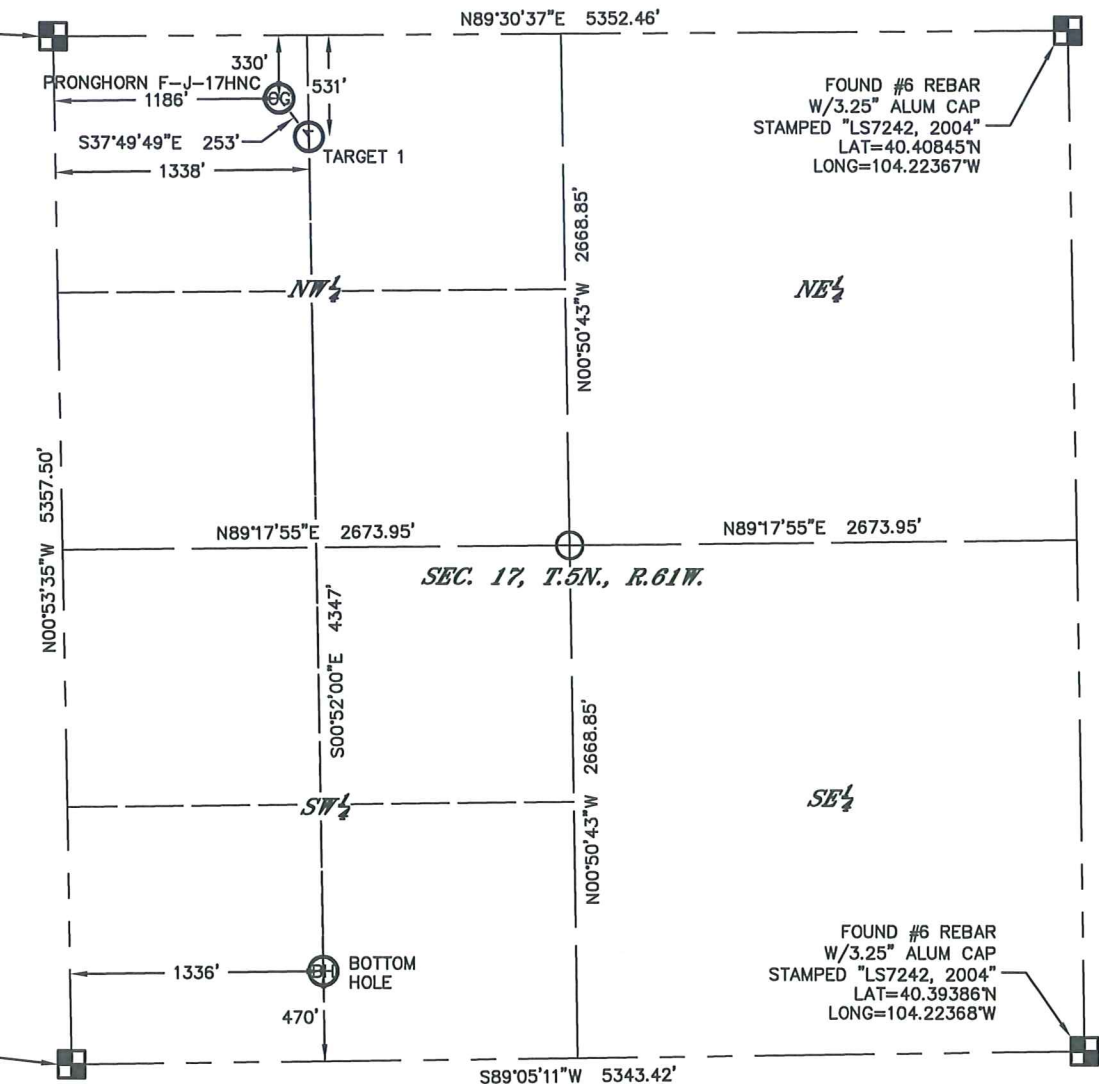
SECTION: 17
TOWNSHIP: 5N
RANGE: 61W

FOUND #6 REBAR
W/3.25" ALUM CAP
STAMPED "LS7242, 2004"
LAT=40.40854°N
LONG=104.24288°W

FOUND #6 REBAR
W/3.25" ALUM CAP
STAMPED "LS7242, 2004"
LAT=40.40845°N
LONG=104.22367°W

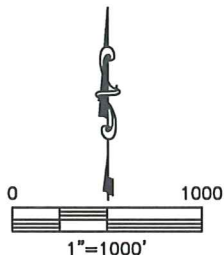
FOUND #6 REBAR
W/3.25" ALUM CAP
STAMPED "LS7242, 2004"
LAT=40.39386°N
LONG=104.22368°W

FOUND #6 REBAR
W/3.25" ALUM CAP
STAMPED "LS7242, 2004"
LAT=40.39383°N
LONG=104.24285°W



In accordance with a request from RANDY EDELEN with BONANZA CREEK ENERGY, INC., King Surveyors has determined the surface location of PRONGHORN F-J-17HNC to be 330' from the NORTH line and 1186' from the WEST line and the bottom hole to be 470' from the SOUTH line and 1336' from the WEST line, as measured at right angles, from the section lines of Section 17, Township 5 North, Range 61 West of the Sixth Principal Meridian, County of Weld, State of Colorado.

I hereby state that this Well Location Certificate was prepared by me, or under my direct supervision, that the fieldwork was completed on 11-25-2013, for and on behalf of BONANZA CREEK ENERGY, INC., that this is not a Land Survey Plat or an Improvement Survey Plat, and that it is not to be relied upon for establishment of fence, building, or other future improvement lines.



NOTES:

- 1) Bearings shown are Grid Bearings of the Colorado State Plane Coordinate System, North Zone, North American Datum 1983. The lined dimensions as contained herein are based upon the "U.S. Survey Foot."
- 2) Ground elevations are based on an observed GPS elevation (NAVD 1988 DATUM).
- 3) IMPROVEMENTS: See LOCATION DRAWING for all visible improvements within 500' of the disturbed area.
- 4) SURFACE USE: PRAIRIE/PASTURE
- 5) INSTRUMENT OPERATOR: STEVEN WOOD
- 6) NEAREST CULTURAL ITEMS:
BUILDING: 5280'+
BUILDING UNIT: 5280'+
HIGH OCCUPANCY BUILDING UNIT: 5280'+
DESIGNATED OUTDOOR ACTIVITY AREA: 5280'+
PUBLIC ROAD: 1156' WEST
ABOVE GROUND UTILITY: 5280'+
RAILROAD: 5280'+
PROPERTY LINE: 330' NORTH

LEGEND

- = FOUND ALIQUOT MONUMENT AS DESCRIBED
 = CALCULATED POSITION

SURFACE LOCATION

LATITUDE: 40.40761°N
 LONGITUDE: 104.23862°W
 PDOP: 1.6
 ELEV: 4592'
 1/4,1/4: NW1/4 NW1/4

TARGET

LATITUDE: 40.40706°N
 LONGITUDE: 104.23808°W
 1/4,1/4: NE1/4 NW1/4

BOTTOM HOLE

LATITUDE: 40.39513°N
 LONGITUDE: 104.23806°W
 1/4,1/4: SW1/4 SW1/4

Lawrence S. Pepek - On Behalf of King Surveyors
 Colorado Licensed Professional Land Surveyor #33642

PROJECT#: 2013766