

FEDERAL 8-89-7 #1
SECTION 7, TOWNSHIP 8 SOUTH, RANGE 89 WEST, 6TH P.M.

FEDERAL 8-89-7
GARFIELD COUNTY
COLORADO

WELL NO. 1
989.9' FSL
1868.7' FWL

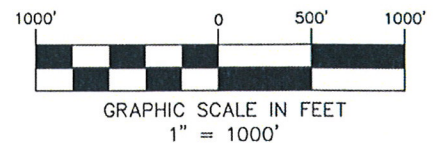
UTM ZONE 13
NORTHING
4360299.081
EASTING
295446.654

GROUND EL: 9728.5
PAD EL: 9726.0

NAD83
LAT: 39.367950025
LONG: 107.374486519
NAD27
LAT: 39.367967916
LONG: 107.373877902

LEGEND

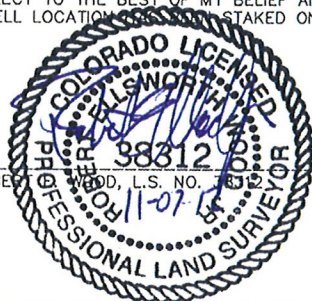
- ⊙ PROPOSED WELL LOCATION
- ◇ FIELD SURVEYED SECTION CORNER
- ◆ FIELD SURVEYED QUARTER CORNER
- CALCULATED SECTION CORNER LOCATION
- △ PROPOSED BOTTOM OF WELL LOCATION



SURVEYOR'S STATEMENT

I, ROBERT E. WOOD, DO HEREBY STATE THAT THIS SURVEY WAS PREPARED BY HIGH COUNTRY ENGINEERING, INC. FOR SG INTERESTS I, LTD., THAT SAID SURVEY WAS PREPARED BY ME OR UNDER MY SUPERVISION AND RESPONSIBLE CHARGE AND THAT IT IS TRUE AND CORRECT TO THE BEST OF MY BELIEF AND KNOWLEDGE. I ALSO CERTIFY THAT THE WELL LOCATION WAS FIELD STAKED ON THE GROUND AS SHOWN ON THE PLAT.

BY _____
ROBERT E. WOOD, L.S. NO. 38312



NOTES:

1. LATITUDES AND LONGITUDES ARE BASED ON NAD83, NGS CONTROL POINTS "ROSEBUD", "Q 158" AND "N 158".
2. ELEVATION BASED ON NAVD OF 1988.
3. WELL MEASUREMENTS ARE 90° FROM SECTION LINES.
4. USGS QUADRANGLE MAP "STONY RIDGE".
5. CURRENT SURFACE LAND USE: U.S. PUBLIC LANDS.
6. PDOP AT THE TIME OF THE LOCATION OF SURFACE WELL = 1.9.
7. DATE OF FIELD WORK, AUGUST 13, 2012.
8. LOCATION OF WELL WAS FIELD STAKED ON SEPTEMBER 20, 2012.
9. OPERATOR: BOB WOOD

HIGH COUNTRY ENGINEERING, INC.



1517 BLAKE AVENUE, STE 101
GLENWOOD SPRINGS, CO 81601
PHONE (970) 945-8676
FAX (970) 945-2555

WWW.HCENG.COM

DRAWN BY: RPK/CAS
CHECKED BY: FWH
DATE: AUGUST 13, 2012
FILE: J:/SDSKPROJ/212/165504/DWG/1655.04.DWG

SCALE: 1" = 1000'
PROJECT No: 2121655.04

WELL LOCATION PLAT
PREPARED FOR: SG INTERESTS I, LTD.

SW 1/4 - SECTION 7
TOWNSHIP 8 SOUTH, RANGE 89 WEST OF 6TH P.M.
GARFIELD COUNTY, COLORADO