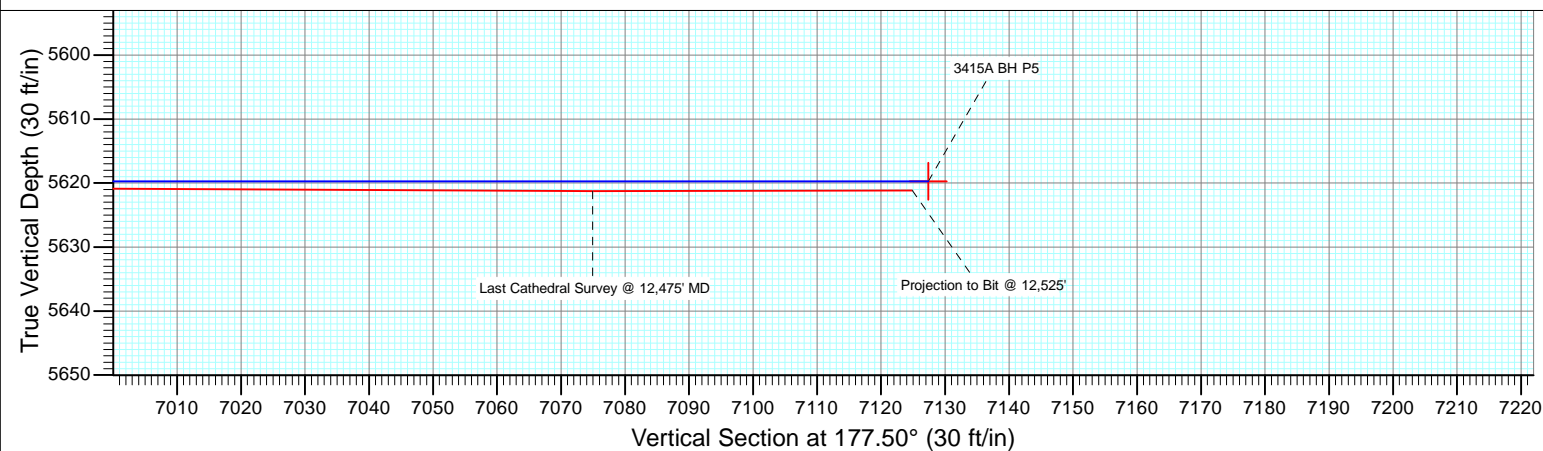
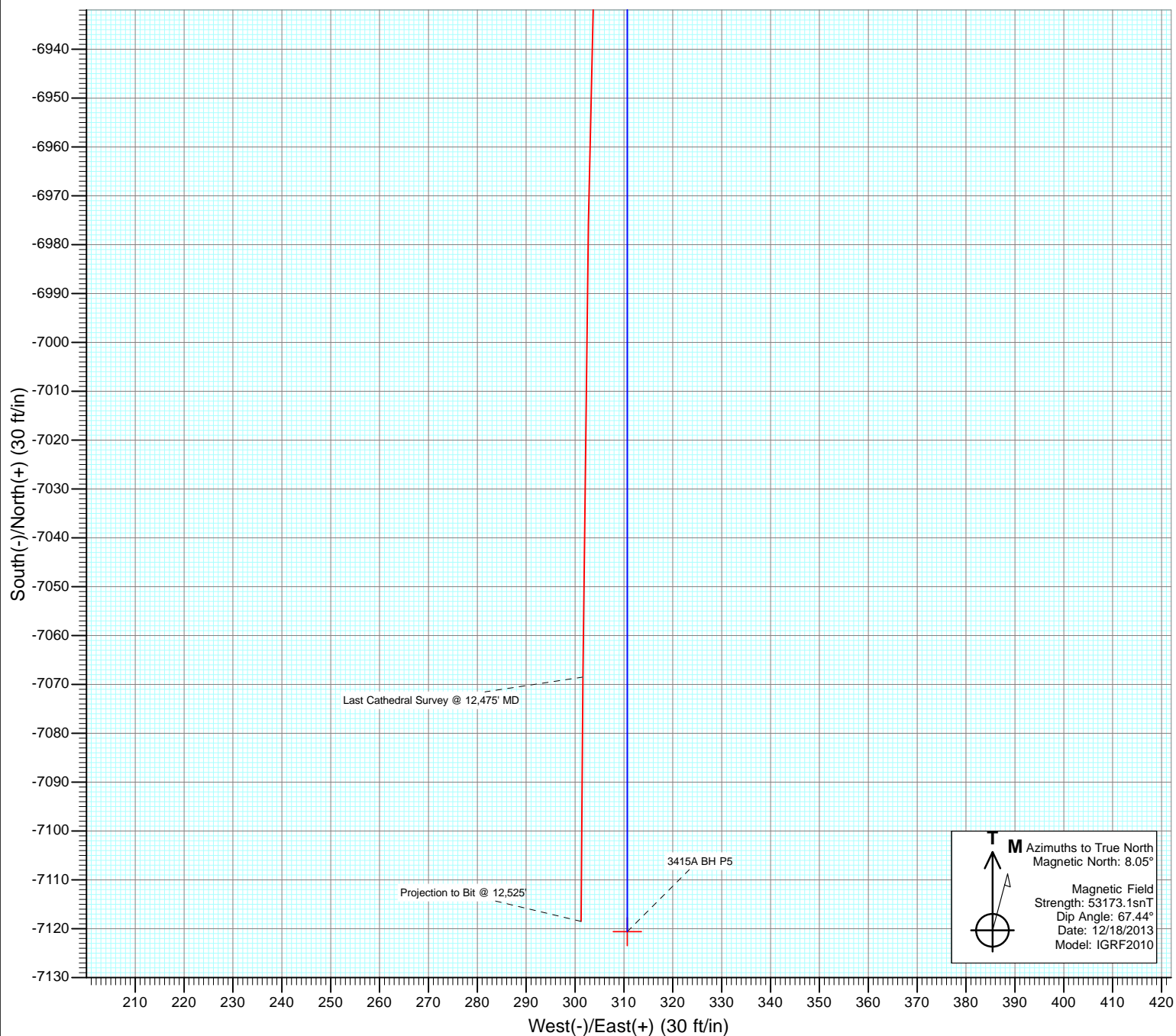




Project: Weld County, CO
Site: S27-T10N-R58W
Well: Razor #27I-3415A
Wellbore: SURVEYS
Design: FINAL



Cathedral Energy Services

Survey Report

Company:	Whiting Petroleum Corporation	Local Co-ordinate Reference:	Well Razor #27I-3415A
Project:	Weld County, CO	TVD Reference:	WELL @ 4773.0ft (Original Well Elev)
Site:	S27-T10N-R58W	MD Reference:	WELL @ 4773.0ft (Original Well Elev)
Well:	Razor #27I-3415A	North Reference:	True
Wellbore:	SURVEYS	Survey Calculation Method:	Minimum Curvature
Design:	FINAL	Database:	USA EDM 5000 Multi Users DB

Project	Weld County, CO		
Map System:	US State Plane 1983	System Datum:	Mean Sea Level
Geo Datum:	North American Datum 1983		
Map Zone:	Colorado Northern Zone		

Site		S27-T10N-R58W			
Site Position:		Northing:	1,541,650.73 ft	Latitude:	40.808594
From:	Lat/Long	Easting:	3,455,691.89 ft	Longitude:	-103.853833
Position Uncertainty:	0.0 ft	Slot Radius:	13.200 in	Grid Convergence:	1.06 °

Well	Razor #27I-3415A					
Well Position	+N/-S	0.0 ft	Northing:	1,541,815.93 ft	Latitude:	40.808911
	+E/-W	0.0 ft	Easting:	3,458,362.09 ft	Longitude:	-103.844178
Position Uncertainty		0.0 ft	Wellhead Elevation:	ft	Ground Level:	4,756.5 ft

Wellbore	SURVEYS				
Magnetics	Model Name	Sample Date	Declination (°)	Dip Angle (°)	Field Strength (nT)
	IGRF2010	12/18/2013	8.05	67.44	53,173

Design	FINAL				
Audit Notes:					
Version:	1.0	Phase:	ACTUAL	Tie On Depth:	0.0
Vertical Section:	Depth From (TVD)	+N/-S	+E/-W	Direction	
	(ft)	(ft)	(ft)	(°)	
	0.0	0.0	0.0	177.50	

Survey Program	Date	12/27/2013			
From (ft)	To (ft)	Survey (Wellbore)	Tool Name	Description	
445.0	12,525.0	Survey #1 (SURVEYS)	ISCWSA MWD	MWD - ISCWSA	

Survey										
Measured Depth (ft)	Inclination (°)	Azimuth (°)	Vertical Depth (ft)	+N/-S (ft)	+E/-W (ft)	Vertical Section (ft)	Dogleg Rate (°/100ft)	Build Rate (°/100ft)	Formations / Comments	
0.0	0.00	0.00	0.0	0.0	0.0	0.0	0.00	0.00		
445.0	0.97	297.92	445.0	1.8	-3.3	-1.9	0.22	0.22		
902.0	1.01	327.18	901.9	7.0	-8.9	-7.3	0.11	0.01		
1,360.0	0.70	310.11	1,359.9	12.2	-13.3	-12.7	0.09	-0.07		
1,585.0	1.32	325.85	1,584.8	15.2	-15.8	-15.9	0.30	0.28		
1,674.0	1.36	315.70	1,673.8	16.8	-17.1	-17.5	0.27	0.04		
1,765.0	1.54	306.23	1,764.8	18.3	-18.8	-19.1	0.33	0.20		
1,856.0	1.05	261.70	1,855.8	18.9	-20.6	-19.8	1.19	-0.54		
1,948.0	1.19	196.45	1,947.7	17.8	-21.7	-18.8	1.32	0.15		
2,040.0	1.32	191.73	2,039.7	15.9	-22.2	-16.8	0.18	0.14		
2,131.0	1.49	183.91	2,130.7	13.7	-22.5	-14.7	0.28	0.19		
2,223.0	1.14	157.62	2,222.7	11.6	-22.2	-12.6	0.75	-0.38		
2,314.0	1.01	165.49	2,313.6	10.0	-21.7	-11.0	0.22	-0.14		

Cathedral Energy Services

Survey Report

Company:	Whiting Petroleum Corporation	Local Co-ordinate Reference:	Well Razor #27I-3415A
Project:	Weld County, CO	TVD Reference:	WELL @ 4773.0ft (Original Well Elev)
Site:	S27-T10N-R58W	MD Reference:	WELL @ 4773.0ft (Original Well Elev)
Well:	Razor #27I-3415A	North Reference:	True
Wellbore:	SURVEYS	Survey Calculation Method:	Minimum Curvature
Design:	FINAL	Database:	USA EDM 5000 Multi Users DB

Survey									
Measured Depth (ft)	Inclination (°)	Azimuth (°)	Vertical Depth (ft)	+N/-S (ft)	+E/-W (ft)	Vertical Section (ft)	Dogleg Rate (°/100ft)	Build Rate (°/100ft)	Formations / Comments
2,405.0	1.05	159.82	2,404.6	8.5	-21.2	-9.4	0.12	0.04	
2,497.0	0.70	170.33	2,496.6	7.1	-20.8	-8.0	0.42	-0.38	
2,588.0	0.79	156.36	2,587.6	6.0	-20.5	-6.9	0.22	0.10	
2,680.0	0.84	164.41	2,679.6	4.8	-20.0	-5.6	0.14	0.05	
2,771.0	0.79	137.02	2,770.6	3.7	-19.4	-4.5	0.43	-0.05	
2,862.0	0.53	138.73	2,861.6	2.9	-18.7	-3.7	0.29	-0.29	
2,953.0	0.13	312.24	2,952.6	2.7	-18.5	-3.5	0.72	-0.44	
3,044.0	0.88	342.16	3,043.6	3.4	-18.8	-4.2	0.85	0.82	
3,136.0	1.14	8.57	3,135.6	5.0	-18.9	-5.8	0.57	0.28	
3,227.0	1.01	22.53	3,226.6	6.6	-18.5	-7.4	0.32	-0.14	
3,319.0	1.45	24.77	3,318.5	8.4	-17.7	-9.2	0.48	0.48	
3,411.0	1.58	14.38	3,410.5	10.7	-16.9	-11.4	0.33	0.14	
3,503.0	1.32	118.08	3,502.5	11.4	-15.6	-12.1	2.48	-0.28	
3,594.0	1.36	123.14	3,593.5	10.3	-13.8	-10.9	0.14	0.04	
3,686.0	2.29	125.32	3,685.4	8.7	-11.4	-9.2	1.01	1.01	
3,777.0	1.76	60.89	3,776.4	8.3	-8.7	-8.7	2.42	-0.58	
3,869.0	2.02	79.71	3,868.3	9.3	-5.8	-9.5	0.73	0.28	
3,961.0	1.98	71.21	3,960.3	10.1	-2.7	-10.2	0.33	-0.04	
4,053.0	2.11	76.73	4,052.2	11.0	0.4	-11.0	0.26	0.14	
4,144.0	0.22	164.78	4,143.2	11.2	2.1	-11.1	2.32	-2.08	
4,235.0	0.88	195.04	4,234.2	10.4	2.0	-10.3	0.77	0.73	
4,326.0	0.88	199.55	4,325.2	9.0	1.5	-9.0	0.08	0.00	
4,417.0	0.92	190.81	4,416.2	7.7	1.2	-7.6	0.16	0.04	
4,508.0	0.57	183.35	4,507.1	6.5	1.0	-6.4	0.40	-0.38	
4,599.0	0.79	186.06	4,598.1	5.4	0.9	-5.4	0.24	0.24	
4,691.0	0.84	158.22	4,690.1	4.1	1.1	-4.1	0.43	0.05	
4,783.0	1.58	130.66	4,782.1	2.7	2.3	-2.6	1.00	0.80	
4,874.0	0.79	123.40	4,873.1	1.5	3.8	-1.4	0.88	-0.87	
4,966.0	0.62	128.71	4,965.1	0.9	4.7	-0.7	0.20	-0.18	
5,057.0	4.40	169.89	5,056.0	-2.9	5.7	3.1	4.35	4.15	
5,148.0	14.95	163.01	5,145.6	-17.6	9.8	18.0	11.64	11.59	
5,239.0	25.45	163.26	5,230.8	-47.6	18.8	48.4	11.54	11.54	
5,330.0	31.96	165.20	5,310.6	-89.7	30.6	90.9	7.23	7.15	
5,422.0	37.41	163.78	5,386.2	-140.1	44.7	141.9	5.99	5.92	
5,513.0	48.92	163.77	5,452.5	-199.8	62.0	202.3	12.65	12.65	
5,604.0	59.52	161.28	5,505.6	-270.0	84.3	273.4	11.86	11.65	
5,635.0	63.65	161.06	5,520.4	-295.8	93.1	299.6	13.34	13.32	
5,665.0	65.71	159.77	5,533.2	-321.4	102.2	325.5	7.89	6.87	
5,696.0	67.78	156.33	5,545.5	-347.8	112.8	352.4	12.19	6.68	
5,727.0	69.45	153.91	5,556.8	-374.0	125.0	379.1	9.05	5.39	
5,757.0	71.43	154.81	5,566.8	-399.4	137.2	405.0	7.18	6.60	
5,787.0	72.62	154.69	5,576.1	-425.3	149.4	431.4	3.98	3.97	
5,818.0	74.46	154.51	5,584.9	-452.1	162.1	458.7	5.96	5.94	
5,848.0	77.05	153.80	5,592.2	-478.3	174.8	485.4	8.93	8.63	
5,878.0	78.73	153.81	5,598.5	-504.6	187.7	512.3	5.60	5.60	
5,909.0	80.44	154.26	5,604.1	-532.0	201.1	540.3	5.70	5.52	
5,939.0	80.00	154.78	5,609.2	-558.7	213.8	567.5	2.25	-1.47	
5,970.0	80.88	155.30	5,614.4	-586.4	226.7	595.7	3.29	2.84	
6,002.0	82.33	158.03	5,619.1	-615.5	239.3	625.3	9.58	4.53	
6,034.0	84.66	159.06	5,622.7	-645.1	250.9	655.4	7.95	7.28	
6,065.0	87.60	160.19	5,624.8	-674.1	261.6	684.8	10.16	9.48	
6,097.0	88.79	161.76	5,625.8	-704.3	272.1	715.5	6.15	3.72	
6,128.0	89.14	163.22	5,626.3	-733.8	281.4	745.4	4.84	1.13	

Cathedral Energy Services

Survey Report

Company:	Whiting Petroleum Corporation	Local Co-ordinate Reference:	Well Razor #27I-3415A
Project:	Weld County, CO	TVD Reference:	WELL @ 4773.0ft (Original Well Elev)
Site:	S27-T10N-R58W	MD Reference:	WELL @ 4773.0ft (Original Well Elev)
Well:	Razor #27I-3415A	North Reference:	True
Wellbore:	SURVEYS	Survey Calculation Method:	Minimum Curvature
Design:	FINAL	Database:	USA EDM 5000 Multi Users DB

Survey									
Measured Depth (ft)	Inclination (°)	Azimuth (°)	Vertical Depth (ft)	+N/-S (ft)	+E/-W (ft)	Vertical Section (ft)	Dogleg Rate (°/100ft)	Build Rate (°/100ft)	Formations / Comments
6,160.0	90.07	164.42	5,626.6	-764.6	290.3	776.5	4.74	2.91	
6,192.0	91.47	165.99	5,626.1	-795.5	298.5	807.8	6.57	4.37	
6,223.0	92.35	167.00	5,625.1	-825.6	305.7	838.2	4.32	2.84	
6,255.0	92.50	167.98	5,623.7	-856.8	312.6	869.7	3.10	0.47	
6,397.0	89.90	170.70	5,620.8	-996.3	338.9	1,010.2	2.65	-1.83	
6,491.0	90.50	173.90	5,620.4	-1,089.5	351.5	1,103.8	3.46	0.64	
6,586.0	89.90	174.50	5,620.1	-1,184.0	361.1	1,198.6	0.89	-0.63	
6,681.0	90.50	179.40	5,619.8	-1,278.8	366.1	1,293.6	5.20	0.63	
6,776.0	89.50	180.10	5,619.8	-1,373.8	366.6	1,388.5	1.28	-1.05	
6,871.0	90.30	183.40	5,619.9	-1,468.8	363.7	1,483.2	3.57	0.84	
6,966.0	90.70	182.50	5,619.1	-1,563.6	358.8	1,577.8	1.04	0.42	
7,061.0	91.40	182.40	5,617.4	-1,658.5	354.7	1,672.4	0.74	0.74	
7,155.0	91.00	183.70	5,615.4	-1,752.4	349.7	1,766.0	1.45	-0.43	
7,250.0	89.50	183.50	5,615.0	-1,847.2	343.7	1,860.4	1.59	-1.58	
7,345.0	88.50	184.20	5,616.6	-1,942.0	337.4	1,954.8	1.28	-1.05	
7,437.0	88.60	186.10	5,619.0	-2,033.6	329.1	2,046.0	2.07	0.11	
7,529.0	88.80	185.40	5,621.1	-2,125.1	319.9	2,137.0	0.79	0.22	
7,620.0	89.60	182.20	5,622.3	-2,215.8	313.9	2,227.4	3.62	0.88	
7,711.0	89.50	179.00	5,623.0	-2,306.8	312.9	2,318.3	3.52	-0.11	
7,803.0	89.50	180.20	5,623.8	-2,398.8	313.6	2,410.2	1.30	0.00	
7,895.0	90.30	179.90	5,624.0	-2,490.8	313.5	2,502.1	0.93	0.87	
7,986.0	90.40	180.30	5,623.5	-2,581.8	313.3	2,593.0	0.45	0.11	
8,077.0	91.10	179.70	5,622.3	-2,672.8	313.3	2,683.9	1.01	0.77	
8,169.0	89.30	178.00	5,621.9	-2,764.8	315.2	2,775.9	2.69	-1.96	
8,260.0	87.70	180.60	5,624.3	-2,855.7	316.3	2,866.8	3.35	-1.76	
8,352.0	87.90	180.30	5,627.9	-2,947.7	315.6	2,958.6	0.39	0.22	
8,444.0	88.40	179.70	5,630.8	-3,039.6	315.6	3,050.5	0.85	0.54	
8,535.0	88.40	180.70	5,633.4	-3,130.6	315.2	3,141.3	1.10	0.00	
8,626.0	88.50	182.20	5,635.8	-3,221.5	312.9	3,232.1	1.65	0.11	
8,717.0	89.20	182.10	5,637.7	-3,312.4	309.5	3,322.8	0.78	0.77	
8,809.0	90.20	183.20	5,638.1	-3,404.3	305.3	3,414.4	1.62	1.09	
8,901.0	89.50	181.00	5,638.4	-3,496.3	301.9	3,506.1	2.51	-0.76	
8,992.0	91.70	182.50	5,637.4	-3,587.2	299.1	3,596.8	2.93	2.42	
9,083.0	92.10	182.50	5,634.4	-3,678.1	295.2	3,687.4	0.44	0.44	
9,174.0	93.00	182.70	5,630.4	-3,768.9	291.0	3,778.0	1.01	0.99	
9,265.0	92.60	181.70	5,625.9	-3,859.7	287.5	3,868.6	1.18	-0.44	
9,357.0	90.70	179.90	5,623.3	-3,951.6	286.3	3,960.4	2.84	-2.07	
9,448.0	90.60	179.30	5,622.2	-4,042.6	286.9	4,051.3	0.67	-0.11	
9,540.0	89.60	179.30	5,622.1	-4,134.6	288.0	4,143.3	1.09	-1.09	
9,632.0	90.10	179.00	5,622.3	-4,226.6	289.4	4,235.2	0.63	0.54	
9,723.0	90.70	178.60	5,621.7	-4,317.6	291.3	4,326.2	0.79	0.66	
9,815.0	89.10	178.00	5,621.8	-4,409.6	294.0	4,418.2	1.86	-1.74	
9,906.0	90.40	179.50	5,622.2	-4,500.5	296.0	4,509.2	2.18	1.43	
9,998.0	89.90	179.50	5,622.0	-4,592.5	296.8	4,601.1	0.54	-0.54	
10,090.0	89.90	178.40	5,622.2	-4,684.5	298.5	4,693.1	1.20	0.00	
10,182.0	90.60	178.50	5,621.8	-4,776.5	301.0	4,785.0	0.77	0.76	
10,273.0	91.00	177.80	5,620.5	-4,867.4	303.9	4,876.0	0.89	0.44	
10,365.0	89.70	177.70	5,619.9	-4,959.3	307.5	4,968.0	1.42	-1.41	
10,456.0	90.40	177.60	5,619.8	-5,050.3	311.3	5,059.0	0.78	0.77	
10,547.0	90.60	179.10	5,619.0	-5,141.2	313.9	5,150.0	1.66	0.22	
10,638.0	88.20	180.60	5,620.0	-5,232.2	314.1	5,240.9	3.11	-2.64	
10,730.0	88.50	180.20	5,622.6	-5,324.2	313.5	5,332.8	0.54	0.33	
10,821.0	89.10	180.40	5,624.6	-5,415.1	313.0	5,423.6	0.69	0.66	

Cathedral Energy Services

Survey Report

Company:	Whiting Petroleum Corporation	Local Co-ordinate Reference:	Well Razor #27I-3415A
Project:	Weld County, CO	TVD Reference:	WELL @ 4773.0ft (Original Well Elev)
Site:	S27-T10N-R58W	MD Reference:	WELL @ 4773.0ft (Original Well Elev)
Well:	Razor #27I-3415A	North Reference:	True
Wellbore:	SURVEYS	Survey Calculation Method:	Minimum Curvature
Design:	FINAL	Database:	USA EDM 5000 Multi Users DB

Survey									
Measured Depth (ft)	Inclination (°)	Azimuth (°)	Vertical Depth (ft)	+N/-S (ft)	+E/-W (ft)	Vertical Section (ft)	Dogleg Rate (°/100ft)	Build Rate (°/100ft)	Formations / Comments
10,913.0	89.30	179.60	5,625.8	-5,507.1	313.0	5,515.5	0.90	0.22	
11,005.0	90.20	179.90	5,626.2	-5,599.1	313.4	5,607.5	1.03	0.98	
11,096.0	90.80	179.30	5,625.4	-5,690.1	314.0	5,698.4	0.93	0.66	
11,188.0	91.20	179.50	5,623.8	-5,782.1	315.0	5,790.3	0.49	0.43	
11,279.0	90.90	178.60	5,622.2	-5,873.1	316.5	5,881.3	1.04	-0.33	
11,370.0	90.40	177.10	5,621.1	-5,964.0	319.9	5,972.3	1.74	-0.55	
11,461.0	91.10	180.40	5,619.9	-6,055.0	321.9	6,063.2	3.71	0.77	
11,552.0	92.00	180.90	5,617.5	-6,145.9	320.9	6,154.1	1.13	0.99	
11,644.0	90.30	179.70	5,615.6	-6,237.9	320.4	6,245.9	2.26	-1.85	
11,735.0	88.40	179.90	5,616.7	-6,328.9	320.7	6,336.8	2.10	-2.09	
11,826.0	88.80	181.90	5,618.9	-6,419.8	319.3	6,427.7	2.24	0.44	
11,918.0	89.00	181.40	5,620.7	-6,511.8	316.6	6,519.4	0.59	0.22	
12,009.0	89.20	180.70	5,622.1	-6,602.8	315.0	6,610.2	0.80	0.22	
12,101.0	90.60	182.80	5,622.3	-6,694.7	312.2	6,701.9	2.74	1.52	
12,192.0	91.30	182.40	5,620.7	-6,785.6	308.0	6,792.6	0.89	0.77	
12,287.0	89.60	181.50	5,620.0	-6,880.5	304.8	6,887.3	2.02	-1.79	
12,382.0	89.40	181.00	5,620.8	-6,975.5	302.7	6,982.1	0.57	-0.21	
12,475.0	90.10	180.40	5,621.2	-7,068.5	301.6	7,074.9	0.99	0.75	Last Cathedral Survey @ 12,475' MD
12,525.0	90.10	180.40	5,621.1	-7,118.5	301.2	7,124.9	0.00	0.00	Projection to Bit @ 12,525' - TD - 602' FSL, 505'

Cathedral Energy Services

Survey Report

Company:	Whiting Petroleum Corporation	Local Co-ordinate Reference:	Well Razor #27I-3415A
Project:	Weld County, CO	TVD Reference:	WELL @ 4773.0ft (Original Well Elev)
Site:	S27-T10N-R58W	MD Reference:	WELL @ 4773.0ft (Original Well Elev)
Well:	Razor #27I-3415A	North Reference:	True
Wellbore:	SURVEYS	Survey Calculation Method:	Minimum Curvature
Design:	FINAL	Database:	USA EDM 5000 Multi Users DB

Targets									
Target Name	- hit/miss target	Dip Angle	Dip Dir.	TVD	+N/-S	+E/-W	Northing	Easting	
- Shape		(°)	(°)	(ft)	(ft)	(ft)	(ft)	(ft)	
3415A 3400 VS		0.00	0.00	5,631.7	-3,389.7	310.6	1,538,432.62	3,458,735.93	40.799607
- actual wellpath misses target center by 7.9ft at 8794.1ft MD (5638.2 TVD, -3389.5 N, 306.1 E)									-103.843056
- Point									
3415A 6000 VS		0.00	0.00	5,619.7	-5,992.2	310.6	1,535,830.57	3,458,784.52	40.792464
- actual wellpath misses target center by 10.6ft at 11398.0ft MD (5620.9 TVD, -5992.0 N, 321.1 E)									-103.843056
- Point									
3415A 838 VS		0.00	0.00	5,624.7	-826.7	278.0	1,540,994.57	3,458,655.48	40.806642
- actual wellpath misses target center by 27.2ft at 6217.6ft MD (5625.3 TVD, -820.4 N, 304.5 E)									-103.843174
- Point									
3415A BH Tgt P4		0.00	0.00	5,621.7	-7,120.6	310.7	1,534,702.38	3,458,805.68	40.789367
- actual wellpath misses target center by 9.7ft at 12525.0ft MD (5621.1 TVD, -7118.5 N, 301.2 E)									-103.843056
- Point									
3415A BHL		0.00	0.00	5,649.0	-7,620.8	318.5	1,534,202.38	3,458,822.78	40.787994
- actual wellpath misses target center by 503.4ft at 12525.0ft MD (5621.1 TVD, -7118.5 N, 301.2 E)									-103.843028
- Point									
3415A BH Tgt P3		0.00	0.00	5,629.7	-7,120.6	310.7	1,534,702.38	3,458,805.68	40.789367
- actual wellpath misses target center by 12.9ft at 12525.0ft MD (5621.1 TVD, -7118.5 N, 301.2 E)									-103.843056
- Point									
3415A BH P5		0.00	0.00	5,619.7	-7,120.6	310.7	1,534,702.38	3,458,805.68	40.789367
- actual wellpath misses target center by 9.8ft at 12525.0ft MD (5621.1 TVD, -7118.5 N, 301.2 E)									-103.843056
- Point									
3415A 5000 VS		0.00	0.00	5,624.7	-4,991.2	310.6	1,536,831.40	3,458,765.83	40.795212
- actual wellpath misses target center by 5.0ft at 10397.0ft MD (5620.0 TVD, -4991.3 N, 308.8 E)									-103.843056
- Point									
3415A BH Tgt		0.00	0.00	5,649.0	-7,120.6	310.7	1,534,702.38	3,458,805.68	40.789367
- actual wellpath misses target center by 29.5ft at 12525.0ft MD (5621.1 TVD, -7118.5 N, 301.2 E)									-103.843056
- Point									
3415A 2200 VS		0.00	0.00	5,619.7	-2,188.5	310.5	1,539,633.61	3,458,713.40	40.802904
- actual wellpath misses target center by 5.2ft at 7592.9ft MD (5622.1 TVD, -2188.8 N, 315.1 E)									-103.843056
- Point									
3415A 4400 VS		0.00	0.00	5,626.7	-4,390.6	310.6	1,537,431.90	3,458,754.62	40.796860
- actual wellpath misses target center by 18.0ft at 9796.6ft MD (5621.6 TVD, -4391.1 N, 293.4 E)									-103.843056
- Point									

Casing Points					
Measured Depth (ft)	Vertical Depth (ft)	Name		Casing Diameter (in)	Hole Diameter (in)
6,283.0	5,622.6	7" - 1506' FSL, 380' FEL			

Design Annotations					
Measured Depth (ft)	Vertical Depth (ft)	Local Coordinates		Comment	
		+N/-S (ft)	+E/-W (ft)		
12,475.0	5,621.2	-7,068.5	301.6	Last Cathedral Survey @ 12,475' MD	
12,525.0	5,621.1	-7,118.5	301.2	Projection to Bit @ 12,525'	
12,525.0	5,621.1	-7,118.5	301.2	TD - 602' FSL, 505' FEL	

Checked By: _____ Approved By: _____ Date: _____