

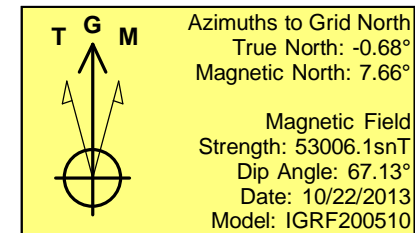
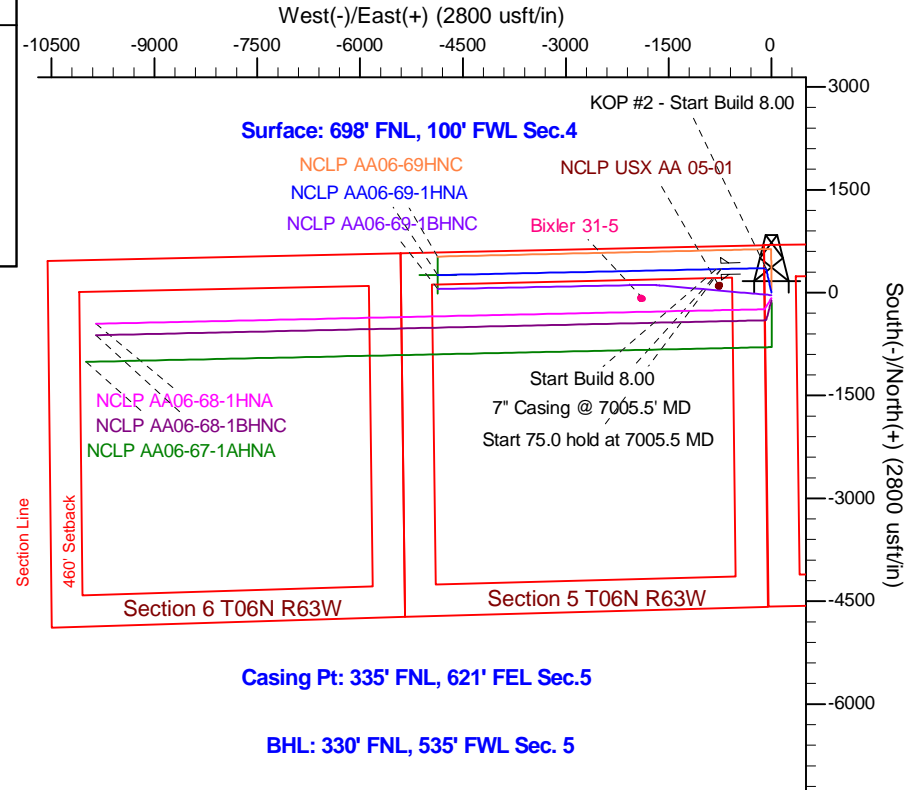
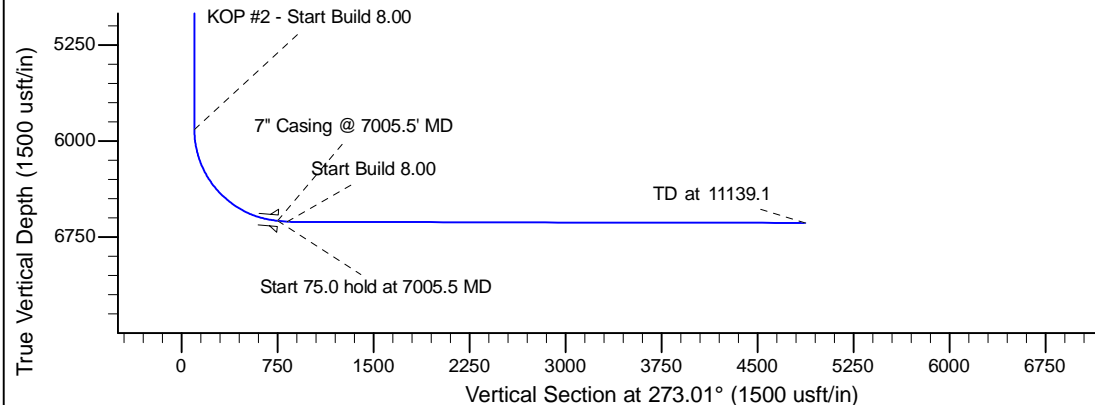
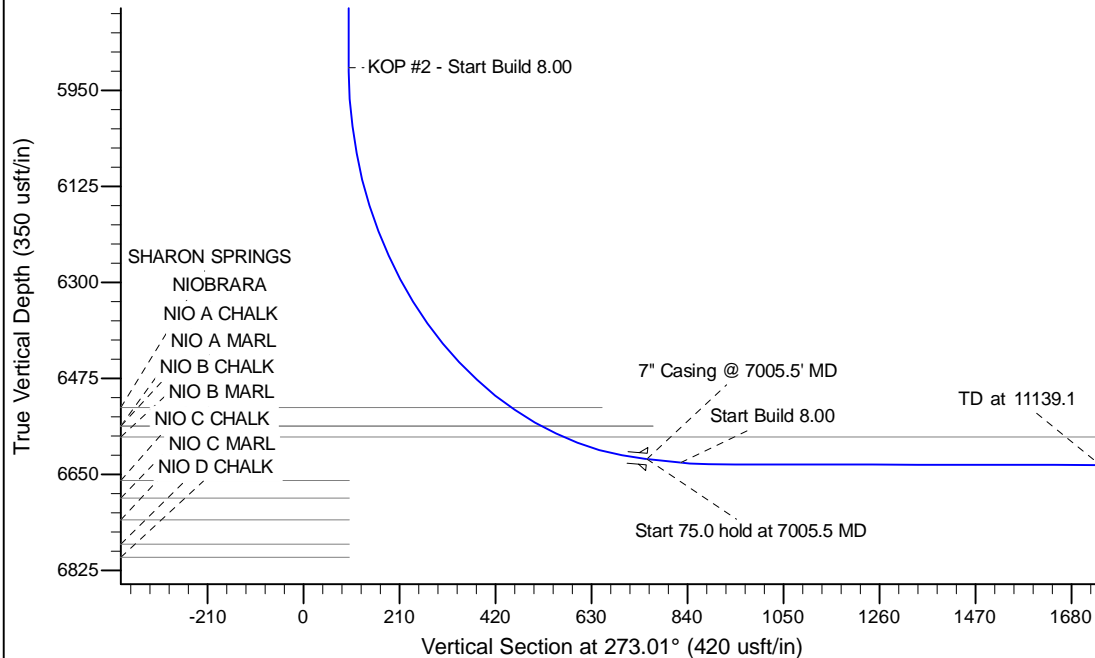
Project: Wattenberg Field
Site: AA (Sec.4-T06N-R63W) Weld County, CO
Well: NCLP AA06-69-1HNA
Wellbore: Original Drilling
Design: APD - Rev 1

Northern Region Drilling - Working

Geodetic System: US State Plane 1983
Datum: North American Datum 1983
Ellipsoid: GRS 1980
Zone: Colorado Northern Zone
System Datum: Mean Sea Level

SECTION DETAILS

Sec	MD	Inc	Azi	TVD	+N/-S	+E/-W	Dleg	TFace	VFace	Target
1	0.0	0.00	0.00	0.0	0.0	0.0	0.00	0.00	0.0	
2	1800.0	0.00	0.00	1800.0	0.0	0.0	0.00	0.00	0.0	
3	2401.5	12.03	347.40	2397.1	61.4	-13.7	2.00	347.40	16.9	
4	3557.7	12.03	347.40	3527.9	296.6	-66.3	0.00	0.00	81.8	
5	4159.2	0.00	0.00	4125.0	358.0	-80.0	2.00	180.00	98.7	
6	5943.0	0.00	0.00	5908.8	358.0	-80.0	0.00	0.00	98.7	
7	7005.5	85.00	268.78	6622.3	344.1	-733.6	8.00	268.78	750.7	
8	7080.5	85.00	268.78	6628.8	342.5	-808.3	0.00	0.00	825.2	
9	7141.8	89.90	268.78	6631.5	341.2	-869.5	8.00	0.00	886.2	
10	11139.1	89.90	268.78	6638.5	256.2	-4865.9	0.00	0.00	4872.7	NCLP AA06-69-1HNA BHL 330'FNL, 535'FWL



WELL DETAILS: NCLP AA06-69-1HNA					
Ground Level: 4711.0					
	Northing	Easting	Latitude	Longitude	
0.0	0.0	1434399.14	3291667.63	40.521090	-104.450860
Plan: APD - Rev 1 (NCLP AA06-69-1HNA/Original Drilling)					
Created By: Shailey Jewell			Date: 11:55, January 02 2014		
Checked: _____			Date: _____		
Reviewed: _____			Date: _____		
Approved: _____			Date: _____		