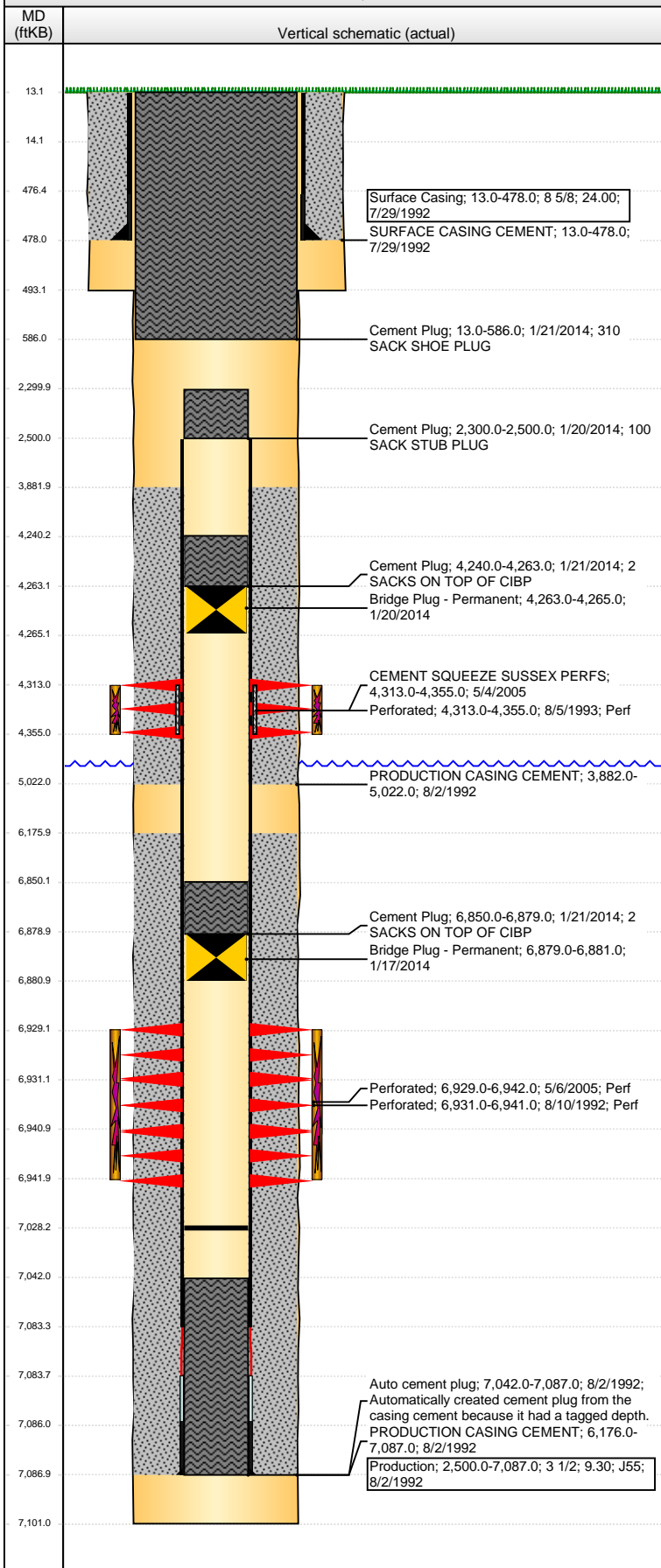


Well Name: SPIKE STATE D10-16

VERTICAL - ORIGINAL HOLE, 2/13/2014 7:38:07 AM



Well Header

API	Business Unit	District	Well Config
05-123-15927	WATTENBERG	15	VERTICAL
Original KB Elevation (ft)	KB - GL / MSL (ftKB)	Spud Date	P & A Date
4,791.00	13.00	7/29/1992	1/21/2014

Comment

Directions To Well

34 & 53, E 1.1MI, N 2/10, E 7/10, SE 1/10, S INTO

Congressional Location

Quarter 1	Quarter 2	Quarter 3	Quarter 4	Section	Township	Twnshp N...	Range	Rng E/W Dir
		SE	SE	10	3	N	64	W

Bottom Hole Location

North-South Distance (ft)	From N or S Line	East-West Distance (ft)	From E or W Line

Plug Back Total Depths

Date	Depth (ftKB)	Method	Com
8/2/1992	7,083.7	CASING TALLY	TOP OF FLOAT COLLAR
8/10/1992	7,042.0	CASED HOLE LOG	DEPTH LOGGER ON CBL
2/6/2006	7,028.1	TAG	LATEST TAG

Wellbore Sections

Section Des	Size (in)	Act Top, MD (ftKB)	Act Btm, MD (ftKB)
SURFACE	12 1/4	13.0	493.0
PRODUCTION	7 7/8	493.0	7,101.0

Zone Statuses

Zone Name	Status Date	Status	Job
CODELL	5/19/2005	PR	DRILLING/COMPLETION - ORIGINAL, 7/29/1992 00:00
SUSSEX	5/4/2005	AB	DRILLING/COMPLETION - ORIGINAL, 7/29/1992 00:00

Casing Strings

Surface Casing, 478.0ftKB

Casing Description	Run Date	OD (in)	W/Len (l...)	Grade	Top, MD (ft...)	MD (ftKB)
Surface Casing	7/29/1992	8 5/8	24.00	J55	13.0	478.0

Production, 7,087.0ftKB

Casing Description	Run Date	OD (in)	W/Len (l...)	Grade	Top, MD (ft...)	MD (ftKB)
Production	8/2/1992	3 1/2	9.30	J55	13.0	7,087.0

Cement

Description	Top Depth (ftKB)	Bottom Depth (ftKB)
SURFACE CASING CEMENT	13.0	478.0
PRODUCTION CASING CEMENT	3,882.0	5,022.0
PRODUCTION CASING CEMENT	6,176.0	7,087.0
CEMENT SQUEEZE SUSSEX PERFS	4,313.0	4,355.0
Cement Plug	2,300.0	2,500.0
Cement Plug	4,240.0	4,263.0
Cement Plug	6,850.0	6,879.0
Cement Plug	13.0	586.0

Tubing Components

Item Des	OD (in)	Wt (lb/ft)	Grade	Jts	Len (ft)	Btm (ftKB)	Btm (TVD) (ftKB)

Perforation Data

Zone	Bnch/St g	Entered Shot Total	Top (ftKB)	Btm (ftKB)	Date
SUSSEX, ORIGINAL HOLE		15	4,313.00	4,355.00	8/5/1993
CODELL, ORIGINAL HOLE		52	6,929.00	6,942.00	5/6/2005
CODELL, ORIGINAL HOLE		40	6,931.00	6,941.00	8/10/1992

Stimulations & Treatments

Date	Zone	Primary Job Type
8/11/1992	CODELL, ORIGINAL HOLE	DRILLING/COMPLETION - ORIGINAL
Technical Result	Tech Result Details	Tech Result Note

Comment

Well Name: SPIKE STATE D10-16

VERTICAL - ORIGINAL HOLE, 2/13/2014 7:38:09 AM

Stimulations & Treatments

Date 8/6/1993	Zone SUSSEX, ORIGINAL HOLE	Primary Job Type RECOMPLETION
Technical Result	Tech Result Details	Tech Result Note
Comment		

Date 5/18/2005	Zone CODELL, ORIGINAL HOLE	Primary Job Type RE-FRAC
Technical Result	Tech Result Details	Tech Result Note
Comment		

Other In Hole

Run Date	Des	OD (in)	Top (ftKB)	Btm (ftKB)
1/17/2014	Bridge Plug - Permanent	2.9	6,879.0	6,881.0
1/20/2014	Bridge Plug - Permanent	2.9	4,263.0	4,265.0

Logs

Date	Type	Top, MD (ftKB)	Btm, MD (ftKB)
8/2/1992	COMPENSATED DENSITY	4,000.0	7,101.0
8/2/1992	INDUCTION	4,000.0	7,101.0
8/10/1992	CEMENT BOND	3,750.0	7,037.0

