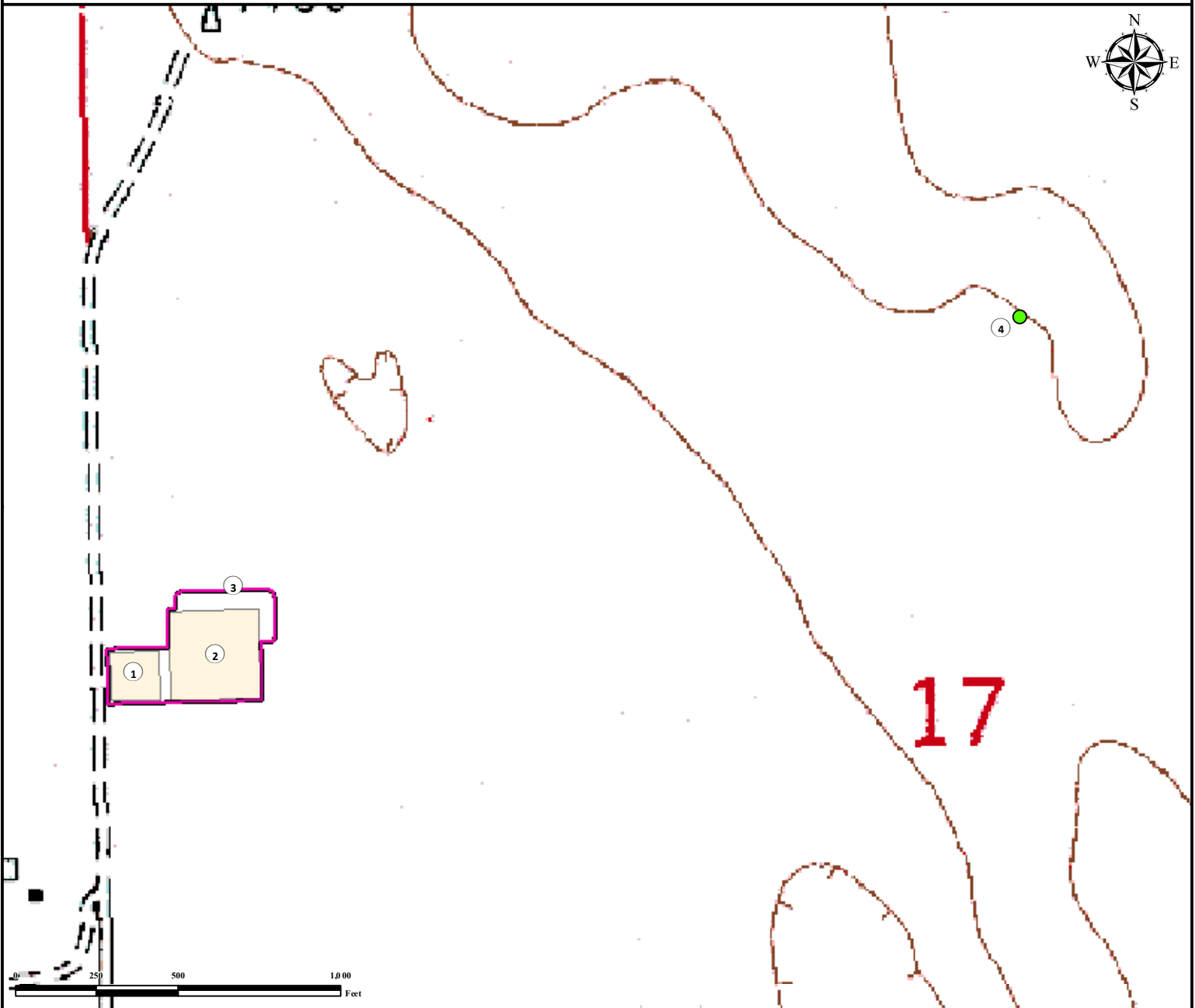


# Reference Area Map




## CRAIG 17-H FACILITY

SW¼ NW¼ SECTION 17, TOWNSHIP 4 SOUTH, RANGE 49 WEST OF THE 6TH PRINCIPAL MERIDIAN



1. Proposed CRAIG 17-H Facility
2. Proposed CRAIG 17-H Evaporation Pond
3. Operational Disturbance Area
4. Reference Photo Point

### Legend

 Proposed Facility       Disturbance Area       Reference Photo Point

### Reference Location

\*\* All measurements are made from  
Reference Photo Point \*\*

Lat: 39.709505° Long: -102.886577° (NAD83)  
Elevation: 4472 Feet

Surface Use: Rangeland



Use our resources to find yours!  
[www.petro-fs.com](http://www.petro-fs.com)  
(303) 928-7128

Field Date: 10/30/2013  
Drafting Date: 1/16/2014  
Drafter: CSG  
Revision:

Data Sources:  
- Topo courtesy of USGS

Prepared for:

 **BAYSWATER**  
EXPLORATION AND PRODUCTION, LLC