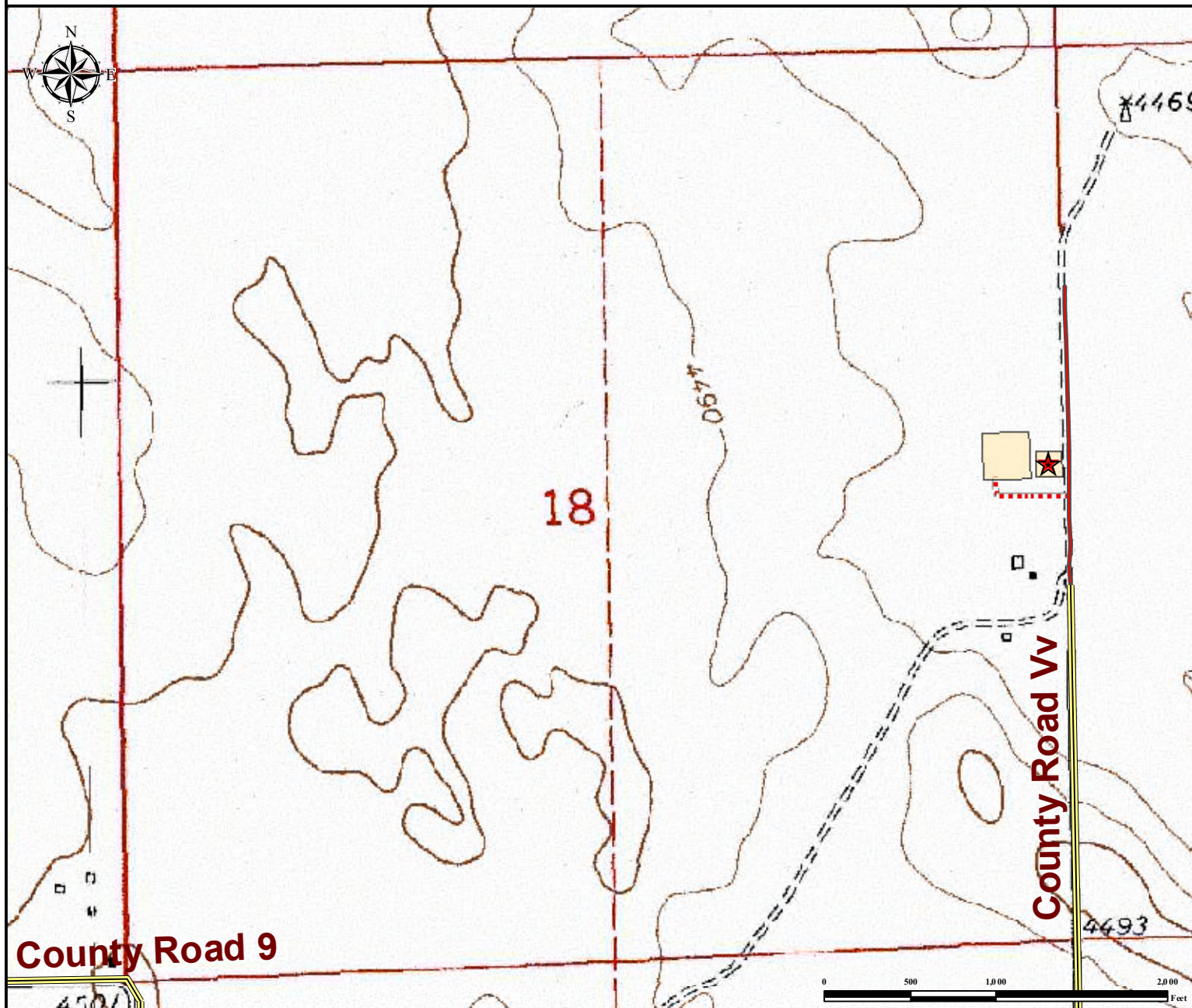


Access Road Map

CRAIG 18-E FACILITY

SE¼ NE¼ SECTION 18, TOWNSHIP 4 SOUTH, RANGE 49 WEST OF THE 6TH PRINCIPAL MERIDIAN



From Anton, CO: From the intersection of US 36 E and CO-63 S.
Drive East: on US 36 E ± 19.0 miles to County Road Vv.
Drive North: on County Road Vv for ± 2.4 miles.
Continue North: on private road for ± 530 feet.
Drive West: on proposed access road for ± 536 feet to Proposed Facility Location.

Total distance from Anton, CO to proposed well pad location is ± 21.5 miles

Legend

- | | | | |
|--|-------------------|--|----------------------|
| | Public Road | | Private Road |
| | Proposed Facility | | Proposed Access Road |

Reference Location

** All measurements are made from
★ Reference Point **

Lat: 39.706657° Long: -102.897147° (NAD83)
Elevation: 4478 Feet



Use our resources to find yours!
www.petro-fs.com
(303) 928-7128

Field Date: 10/30/2013
Drafting Date: 1/15/2014
Drafter: CSG
Revision:

Data Sources:
- Topo courtesy of USGS

Prepared for:

