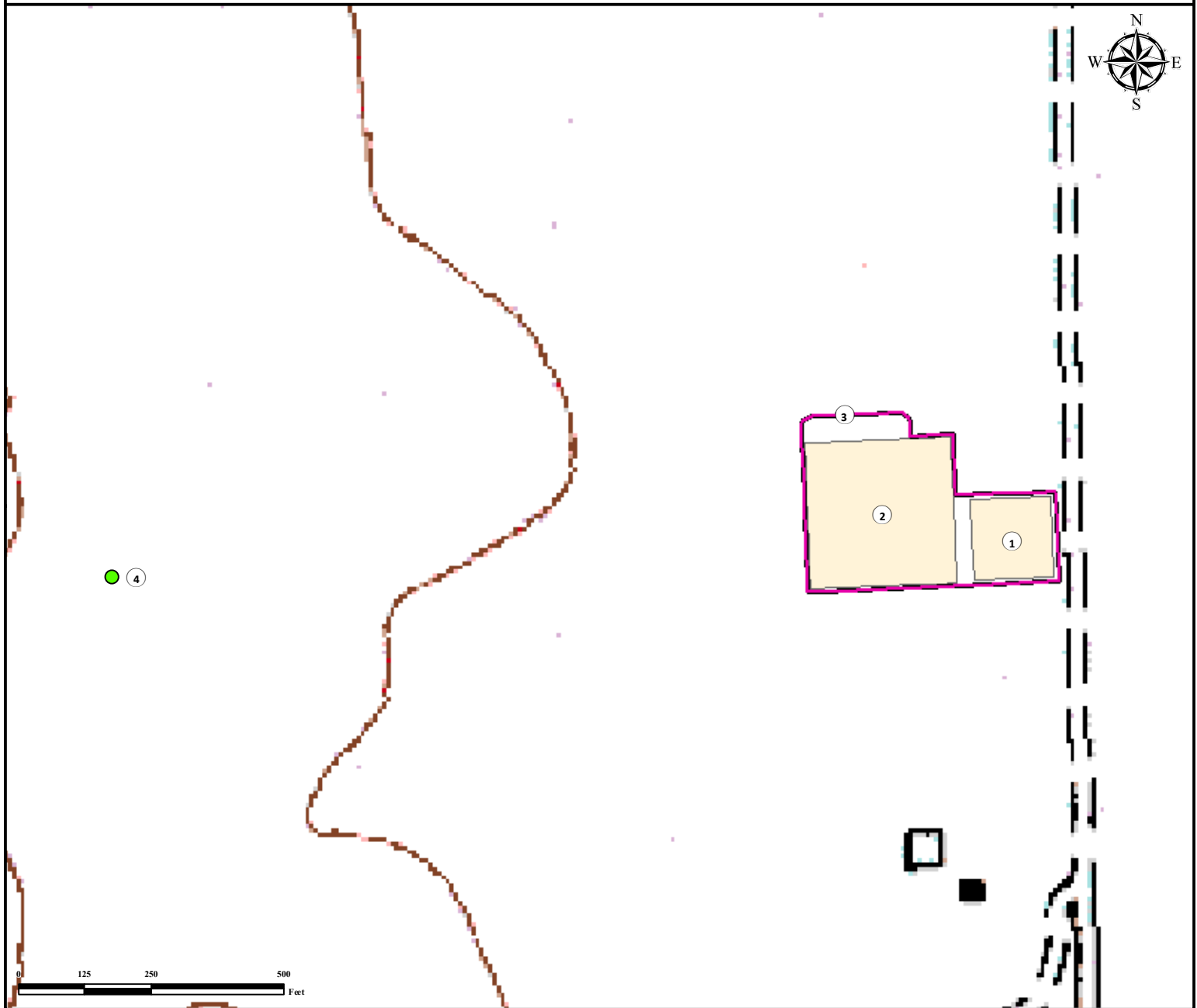


# Reference Area Map

## CRAIG 18-E FACILITY

SE¼ NE¼ SECTION 18, TOWNSHIP 4 SOUTH, RANGE 49 WEST OF THE 6TH PRINCIPAL MERIDIAN



1. Proposed CRAIG 18-E Facility
2. Proposed CRAIG 18-E Evaporation Pond
3. Operational Disturbance Area
4. Reference Photo Point

### Legend

- Proposed Facility
  Disturbance Area
  Reference Photo Point

### Reference Location

\*\* All measurements are made from  
 Reference Photo Point \*\*  
 Lat: 39.706553° Long: -102.903192° (NAD83)  
 Elevation: 4491 Feet

Surface Use: Rangeland



Use our resources to find yours!  
[www.petro-fs.com](http://www.petro-fs.com)  
 (303) 928-7128

Field Date: 10/30/2013  
 Drafting Date: 1/16/2014  
 Drafter: CSG  
 Revision:

Data Sources:  
 - Topo courtesy of USGS

Prepared for:

