

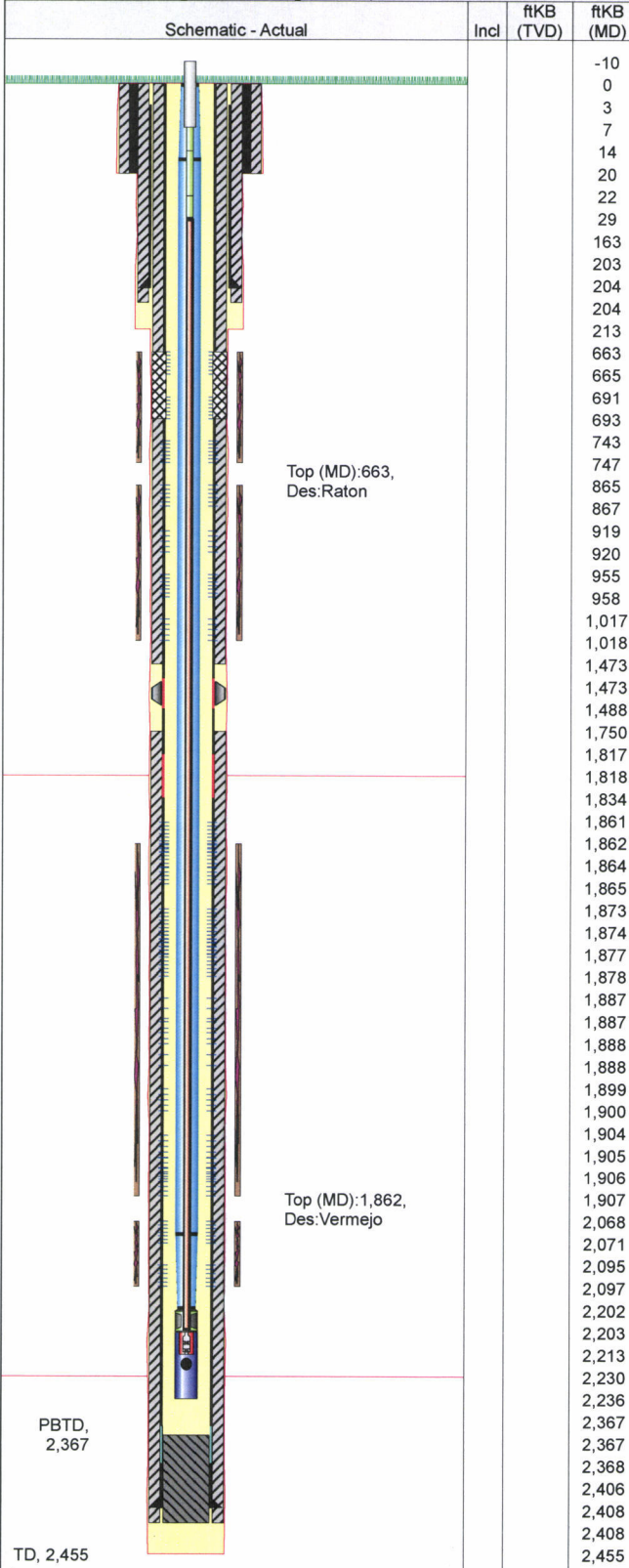


XTO - Wellbore Diagram

Well Name: Apache Canyon 13-11

API/UWI	E/W Dist (ft)	E/W Ref	N/S Dist (ft)	N/S Ref	Location	Field Name	County	State/Province
05071084820000	1,424.0	FWL	1,450.0	FSL	T34S-R68W-S13	Purgatoire River	Las Animas	Colorado
Well Configuration Type	XTO ID B	Orig KB Elev (ft)	Gr Elev (ft)	KB-Grd (ft)	Spud Date	PBTD (All) (ftKB)	Total Depth (ftKB)	Method Of Production
Vertical	94864	8,265.00	8,265.00	0.00	8/22/2005	Original Hole - 2367.0	2,455.0	Beam

Well Config: Vertical - Original Hole, 2/12/2014 9:20:10 AM



Zones									
Zone		Top (ftKB)		Btm (ftKB)					
Raton		663.0		1,018.0					
Vermejo		1,862.0		2,097.0					
Casing Strings									
Casing Description	OD (in)	Wt (lbs/ft)	String Grade	Top Connection	Set Depth (ftKB)				
Conductor	12 3/4				20.0				
Casing Description	OD (in)	Wt (lbs/ft)	String Grade	Top Connection	Set Depth (ftKB)				
Surface	8 5/8	24.00	J-55		203.8				
Casing Description	OD (in)	Wt (lbs/ft)	String Grade	Top Connection	Set Depth (ftKB)				
Production	5 1/2	15.50	J-55		2,407.7				
Item Description	OD (in)	Wt (lbs/ft)	Grade	Top (ftKB)	Bottom (ftKB)				
DV Tool	5 1/2			1,473.3	1,487.6				
Cement									
Description	Type			String					
Surface Casing Cement	casing			Surface, 203.8ftKB					
Comment									
Description	Type			String					
Conductor Casing Cement	casing			Conductor, 20.0ftKB					
Comment									
Description	Type			String					
Production Casing Cement	casing			Production, 2,407.7ftKB					
Comment									
Description	Type			String					
Cement Squeeze	squeeze			Production, 2,407.7ftKB					
Comment									
Perforations									
Date	Top (ftKB)	Btm (ftKB)	Shot Dens (shots/ft)	Hole Diameter (in)	Phasing (°)	Curr... Status	Zone		
1/27/2006	663.0	665.0	3.0	0.400	120	Sq...	Raton		
1/27/2006	691.0	693.0	3.0	0.400	120	Sq...	Raton		
1/27/2006	743.0	747.0	3.0	0.400	120		Raton		
1/27/2006	865.0	867.0	3.0	0.400	120		Raton		
1/27/2006	919.0	920.0	3.0	0.400	120		Raton		
1/27/2006	955.0	958.0	3.0	0.400	120		Raton		
1/27/2006	1,017.0	1,018.0	3.0	0.400	120		Raton		
1/26/2006	1,861.0	1,864.0	3.0	0.400	120		Vermejo		
1/26/2006	1,862.0	1,865.0	3.0	0.400	120		Vermejo		
1/26/2006	1,873.0	1,877.0	3.0	0.400	120		Vermejo		
1/26/2006	1,874.0	1,878.0	3.0	0.400	120		Vermejo		
1/26/2006	1,887.0	1,888.0	3.0	0.400	120		Vermejo		
1/26/2006	1,887.5	1,888.5	3.0	0.400	120		Vermejo		
1/26/2006	1,899.0	1,900.0	3.0	0.400	120		Vermejo		
1/26/2006	1,904.0	1,906.0	3.0	0.400	120		Vermejo		
1/26/2006	1,905.0	1,907.0	3.0	0.400	120		Vermejo		
1/25/2006	2,068.0	2,071.0	4.0	0.400	120		Vermejo		
1/25/2006	2,095.0	2,097.0	4.0	0.400	120		Vermejo		
Tubing Strings									
Tubing Description			Run Date		Set Depth (ftKB)				
Tubing - Production			1/31/2014		2,236.0				
Tubing Components									
Item Description	Jts	Model	OD (in)	Wt (lbs/ft)	Gra...	Top Thread	Len (ft)	Top (ftKB)	Btm (ftKB)
Tubing	73	T&C Upset	2 3/8	4.70	J-55		2,202.37	0.0	2,202.4
Seat Nipple	1		2 3/8				1.10	2,202.4	2,203.5
OEMA	1		2 3/8	4.70	J-55		32.55	2,203.5	2,236.0
Rods									
Rod Description		Run Date		String Length (ft)		Set Depth (ftKB)			
Insert Pump		2/1/2014		2,223.00		2,213.4			



XTO - Wellbore Diagram

Well Name: Apache Canyon 13-11

API/UWI 05071084820000	E/W Dist (ft) 1,424.0	E/W Ref FWL	N/S Dist (ft) 1,450.0	N/S Ref FSL	Location T34S-R68W-S13	Field Name Purgatoire River	County Las Animas	State/Province Colorado
Well Configuration Type Vertical	XTO ID B 94864	Orig KB Elev (ft) 8,265.00	Gr Elev (ft) 8,265.00	KB-Grd (ft) 0.00	Spud Date 8/22/2005	PBTD (All) (ftKB) Original Hole - 2367.0	Total Depth (ftKB) 2,455.0	Method Of Production Beam

Well Config: Vertical - Original Hole, 2/12/2014 9:20:10 AM

Schematic - Actual	Incl	ftKB (TVD)	ftKB (MD)	Rod Components								
				Item Description	Jts	Model	OD (in)	Grade	Len (ft)	Top (ftKB)	Btm (ftKB)	
			-10	Polished Rod	1		1 1/4		16.00	-9.6	6.4	
			0	Rod Sub	1		3/4	D	8.00	6.4	14.4	
			3	Rod Sub	1		3/4	D	8.00	14.4	22.4	
			7	Rod Sub	1		3/4	D	6.00	22.4	28.4	
			14	Sucker Rod	87	97	3/4	D	2,175.00	28.4	2,203.4	
			20	Rod Insert Pump	1		1 1/2		10.00	2,203.4	2,213.4	
			22	Stimulations & Treatments								
			29	Frac Start Date	Top Perf (ft...	Bottom Pe...	V (slurry) (...)	Total Prop...	AIR (b...	ATP (psi)	MTP (psi)	ISIP (psi)
			163	1/25/2006	2068	2097						
			203	Comment								
		204										
		204	Frac Start Date	Top Perf (ft...	Bottom Pe...	V (slurry) (...)	Total Prop...	AIR (b...	ATP (psi)	MTP (psi)	ISIP (psi)	
		213	1/26/2006	1862	1907							
		663	Comment									
		665	Refrac									
		691	Frac Start Date	Top Perf (ft...	Bottom Pe...	V (slurry) (...)	Total Prop...	AIR (b...	ATP (psi)	MTP (psi)	ISIP (psi)	
		693	1/26/2006	1862	1907							
		743	Comment									
		747										
		865	Frac Start Date	Top Perf (ft...	Bottom Pe...	V (slurry) (...)	Total Prop...	AIR (b...	ATP (psi)	MTP (psi)	ISIP (psi)	
		867	1/26/2006	663	747							
		919	Comment									
		920										
		955	Frac Start Date	Top Perf (ft...	Bottom Pe...	V (slurry) (...)	Total Prop...	AIR (b...	ATP (psi)	MTP (psi)	ISIP (psi)	
		958	1/27/2006	865	1018							
		1,017	Comment									
		1,018										
		1,473										
		1,473										
		1,488										
		1,750										
		1,817										
		1,818										
		1,834										
		1,861										
		1,862										
		1,864										
		1,865										
		1,873										
		1,874										
		1,877										
		1,878										
		1,887										
		1,887										
		1,888										
		1,888										
		1,899										
		1,900										
		1,904										
		1,905										
		1,906										
		1,907										
		2,068										
		2,071										
		2,095										
		2,097										
		2,202										
		2,203										
		2,213										
		2,230										
		2,236										
		2,367										
		2,367										
		2,368										
		2,406										
		2,408										
		2,408										
		2,455										
		2,455										