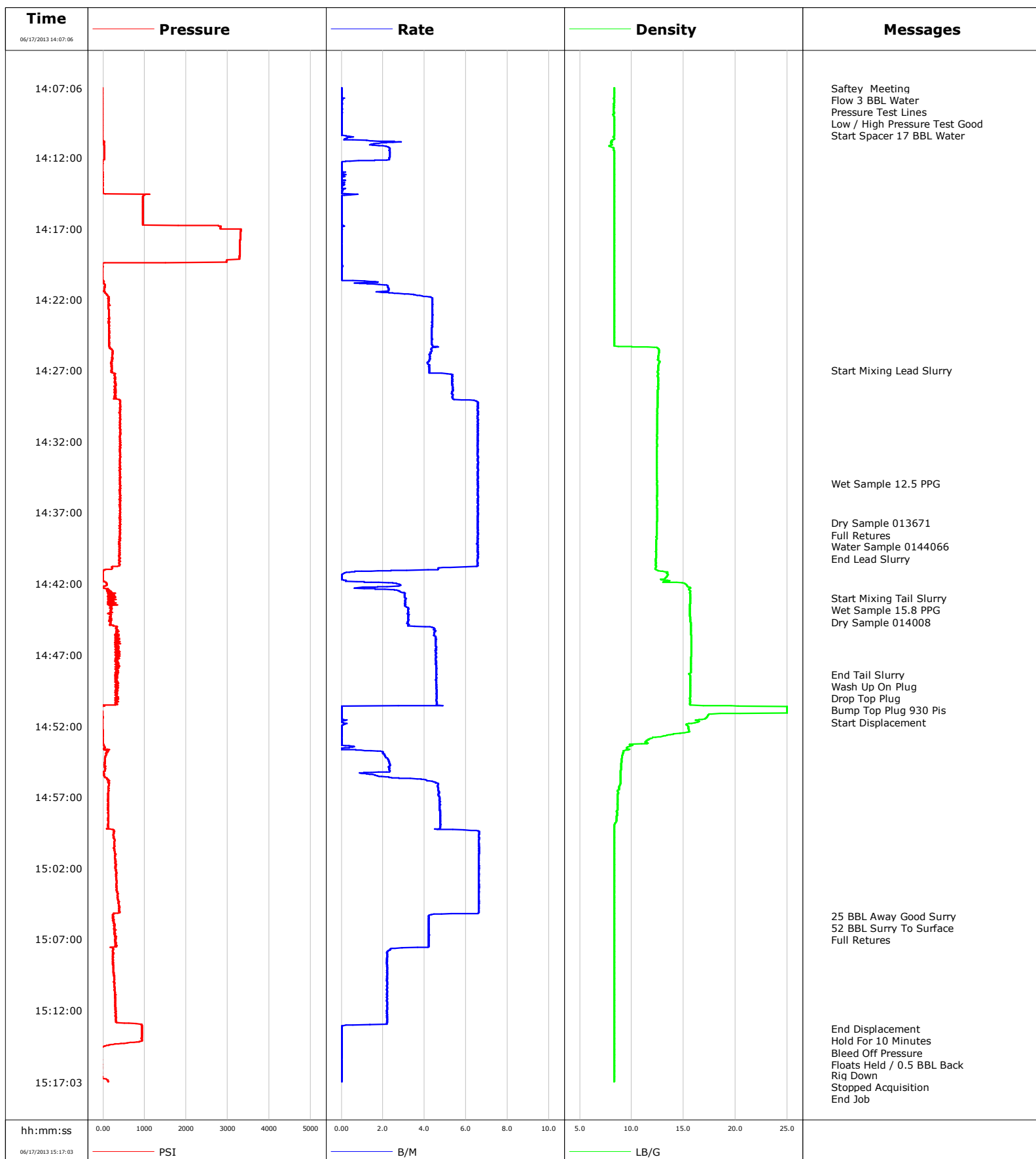


Well Hagen15-14C
Field Parachute
Engineer Travis Willarson/ Mike Reedy
Country United States

Client Encana
SIR No. C459-01505
Job Type 9 5/8 Surface
Job Date 06-17-2013

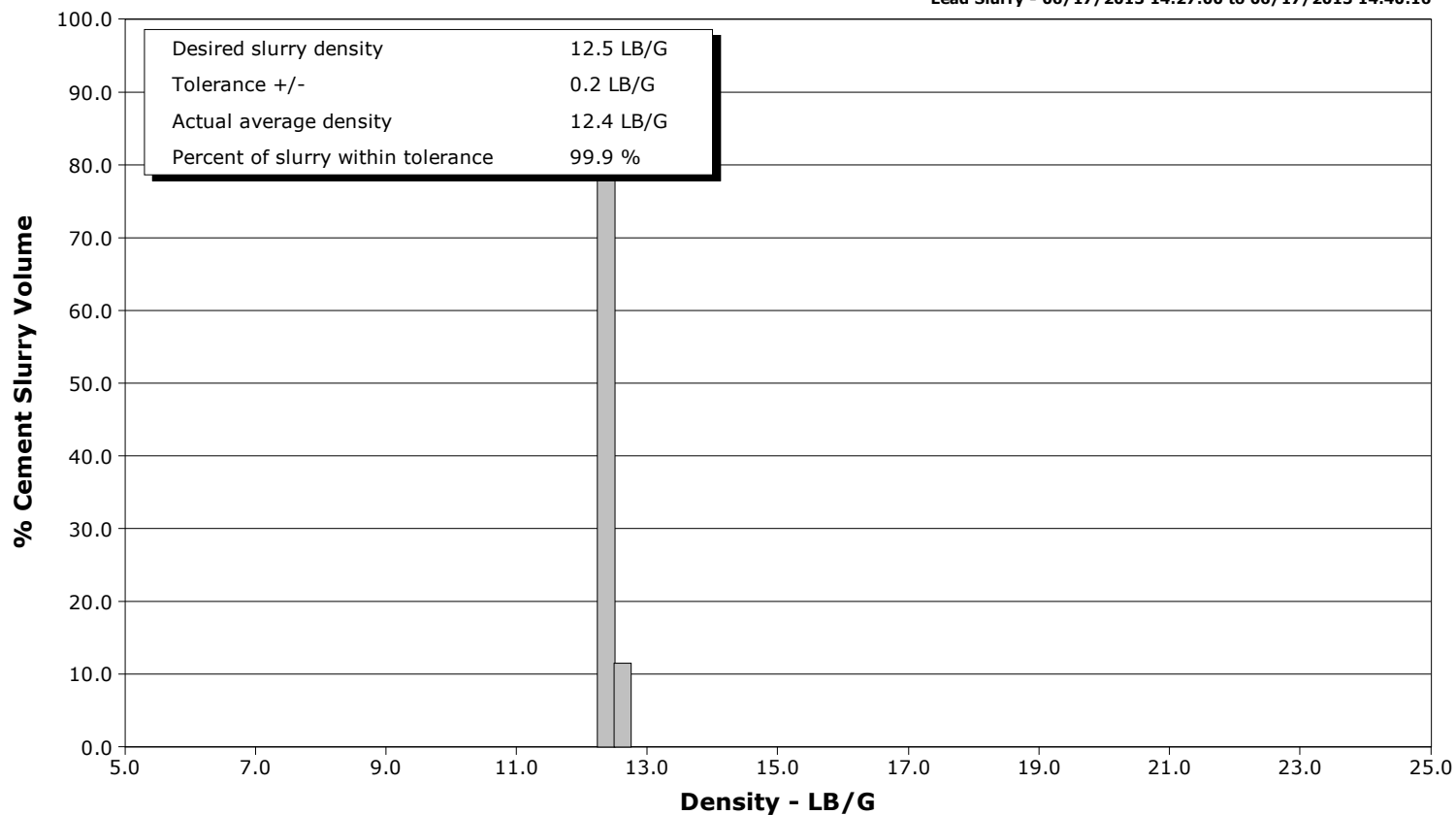


Schlumberger Cementing Qa/Qc Density Report

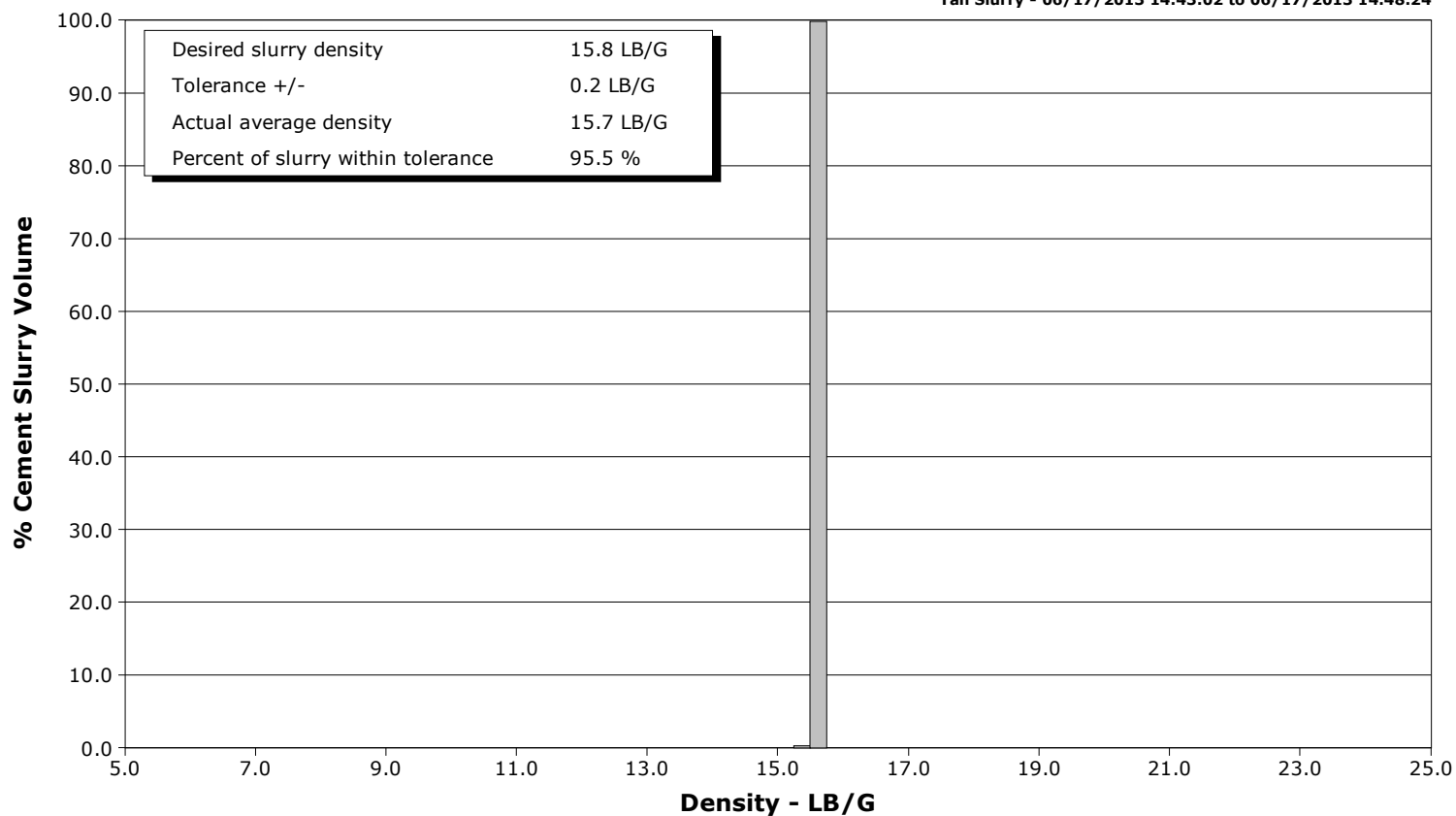
Well Hagen15-14C
Field Parachute
Engineer Travis Willarson/ Mike Reedy
Country United States

Client Encana
SIR No. C459-01505
Job Type 9 5/8 Surface
Job Date 06-17-2013

Lead Slurry - 06/17/2013 14:27:00 to 06/17/2013 14:40:16



Tail Slurry - 06/17/2013 14:43:02 to 06/17/2013 14:48:24





Cementing Service Report

				Customer Encana		Job Number C459-01505		
Well Hagen15-14C 15-14C			Location (legal) PC22		Schlumberger Location Gand Junction		Job Start Jun/17/2013	
Field Parachute		Formation Name/Type Dirty-Sandstone		Deviation	Bit Size 12.3 in	Well MD 1046.0 ft		Well TVD
County Garfield		State/Province Colorado		BHP	BHST 94 degF	BHCT 85 degF	Pore Press. Gradient	
Well Master 0631473069		API/UWI 05045220210000						
Rig Name Patterson 303	Drilled For Gas	Service Via Land	Casing/Liner					
			Depth, ft	Size, in	Weight, lb/ft	Grade	Thread	
Offshore Zone	Well Class New	Well Type Development	40.0	16.000	65.0	N/A	N/A	
			1000.0	9.630	36.0	J55	8RD	
Drilling Fluid Type Bentonite		Max. Density	Plastic Viscosity	Tubing/Drill Pipe				
				Depth,	Size,	Weight,	Grade	Thread
Service Line Cementing	Job Type 9 5/8 Surface							
Max. Allowed Tub. Press	Max. Allowed Ann. Press	WH Connection Single Cement head	Perforations/Open Hole					
			Top,	Bottom,		No. of Shots	Total Interval	
							Diameter	
			Treat Down Casing	Displacement 74.1 bbl	Packer Type	Packer Depth		
			Tubing Vol.	Casing Vol.	Annular Vol. 62.0 bbl	Openhole Vol. 146.0 bbl		
Casing/Tubing Secured	<input checked="" type="checkbox"/>	1 Hole Vol. Circulated prior to Cement	<input checked="" type="checkbox"/>	Casing Tools		Squeeze Job		
Lift Pressure 518 psi				Shoe Type Float	Squeeze Type			
Pipe Rotated	<input type="checkbox"/>	Pipe Reciprocated	<input type="checkbox"/>	Shoe Depth	Tool Type			
No. Centralizers	Top Plugs 1	Bottom Plugs		Stage Tool Type	Tool Depth			
Cement Head Type Single				Stage Tool Depth	Tail Pipe Size			
Job Scheduled For Jun/17/2013	Arrived on Location Jun/17/2013	Leave Location Jun/17/2013		Collar Type Float	Tail Pipe Depth			
				Collar Depth	Sqz. Total Vol.			
Date	Time 24-hr clock	Treating Pressure PSI	Flow Rate B/M	Density LB/G	Volume BBL	Message		
06/17/2013	14:06:34					Started Acquisition		
06/17/2013	14:07:02					Start Job		
06/17/2013	14:07:06	-23	0.0	8.30	0.0			
06/17/2013	14:07:07					Saftey Meeting		
06/17/2013	14:07:07					Flow 3 BBL Water		
06/17/2013	14:07:07	-24	0.0	8.30	0.0			
06/17/2013	14:07:14					Pressure Test Lines		
06/17/2013	14:07:14	-23	0.0	8.30	0.0			
06/17/2013	14:07:18					Low / High Pressure Test Good		
06/17/2013	14:07:18					Start Spacer 17 BBL Water		
06/17/2013	14:07:18	-24	0.0	8.30	0.0			
06/17/2013	14:11:34	33	2.3	8.29	1.7			
06/17/2013	14:16:34	954	0.0	8.30	3.5			
06/17/2013	14:21:34	69	2.6	8.30	5.2			
06/17/2013	14:26:34	202	4.2	12.60	26.7			
06/17/2013	14:27:00					Start Mixing Lead Slurry		
06/17/2013	14:27:00	201	4.2	12.56	28.6			
06/17/2013	14:31:34	402	6.6	12.43	55.8			
06/17/2013	14:34:55					Wet Sample 12.5 PPG		
06/17/2013	14:34:55	407	6.5	12.43	77.7			
06/17/2013	14:36:34	399	6.6	12.43	88.6			

Well			Field		Job Start		Customer		Job Number	
Hagen15-14C 15-14C			Parachute		Jun/17/2013		Encana		C459-01505	
Date	Time 24-hr clock	Treating Pressure PSI	Flow Rate B/M	Density LB/G	Volume BBL	Message				
06/17/2013	14:37:43	412	6.6	12.42	96.1					
06/17/2013	14:38:11					Full Retures				
06/17/2013	14:38:11	406	6.6	12.41	99.2					
06/17/2013	14:38:39					Water Sample 0144066				
06/17/2013	14:38:39	414	6.6	12.38	102.3					
06/17/2013	14:40:16					End Lead Slurry				
06/17/2013	14:40:16	395	6.5	12.33	112.9					
06/17/2013	14:41:34	-5	0.0	13.31	117.8					
06/17/2013	14:43:02					Start Mixing Tail Slurry				
06/17/2013	14:43:02	159	3.1	15.64	120.8					
06/17/2013	14:43:07					Wet Sample 15.8 PPG				
06/17/2013	14:43:07					Dry Sample 014008				
06/17/2013	14:43:07	302	3.1	15.64	121.0					
06/17/2013	14:46:34	388	4.6	15.73	134.1					
06/17/2013	14:48:24					End Tail Slurry				
06/17/2013	14:48:24	292	4.6	15.59	142.4					
06/17/2013	14:48:28					Wash Up On Plug				
06/17/2013	14:48:28	289	4.6	15.63	142.7					
06/17/2013	14:48:40					Drop Top Plug				
06/17/2013	14:48:40	354	4.6	15.63	143.6					
06/17/2013	14:48:41					Bump Top Plug 930 Pis				
06/17/2013	14:48:41	306	4.6	15.63	143.7					
06/17/2013	14:48:43					Start Displacement				
06/17/2013	14:48:43	316	4.6	15.63	143.8					
06/17/2013	14:51:34	-15	0.1	16.52	152.4					
06/17/2013	14:56:34	136	4.7	8.64	160.5					
06/17/2013	15:01:34	297	6.6	8.30	188.5					
06/17/2013	15:05:22					25 BBL Away Good Surry				
06/17/2013	15:05:22					52 BBL Surry To Surface				
06/17/2013	15:05:22	243	4.2	8.30	213.3					
06/17/2013	15:06:34	266	4.2	8.30	218.3					
06/17/2013	15:06:40					Full Retures				
06/17/2013	15:06:40	294	4.2	8.30	218.8					
06/17/2013	15:11:34	304	2.2	8.30	231.5					
06/17/2013	15:13:18					End Displacement				
06/17/2013	15:13:18	934	0.0	8.30	234.7					
06/17/2013	15:13:57					Hold For 10 Minutes				
06/17/2013	15:13:57					Bleed Off Pressure				
06/17/2013	15:13:57	952	0.0	8.30	234.7					
06/17/2013	15:13:59					Floats Held / 0.5 BBL Back				
06/17/2013	15:13:59	921	0.0	8.30	234.7					
06/17/2013	15:16:32					Rig Down				
06/17/2013	15:16:32	-25	0.0	8.31	234.7					
06/17/2013	15:16:34	-24	0.0	8.30	234.7					
06/17/2013	15:17:56					Stopped Acquisition				

Well Hagen15-14C 15-14C	Field Parachute	Job Start Jun/17/2013	Customer Encana	Job Number C459-01505
-----------------------------------	---------------------------	---------------------------------	---------------------------	---------------------------------

Post Job Summary

Average Pump Rates, bbl/min					Volume of Fluid Injected, bbl			
Slurry 3.5	N2	Mud 0.0	Maximum Rate 6.7	Total Slurry 125.0	Mud 0.0	Spacer 28.5	N2	
Treating Pressure Summary, psi					Breakdown Fluid			
Maximum 3319	Final 135	Average 441	Bump Plug to 930	Breakdown	Type	Volume	Density	
Avg. N2 Percent	Designed Slurry Volume 125.0 bbl		Displacement 91.0 bbl	Mix Water Temp 75 degF	Cement Circulated to Surface? <input checked="" type="checkbox"/>	Volume 52.0 bbl		
Customer or Authorized Representative Charlie Brown			Schlumberger Supervisor Travis Willarson/ Mike Reedy		Washed Thru Perfs <input type="checkbox"/>	To		
					Circulation Lost <input type="checkbox"/>	Job Completed <input checked="" type="checkbox"/>		
					-		-	