

T20S, R56W, 6th P.M.

2012 Alum. Cap,
#34980, 0.3' Below Ground
Lat: 38.350922°
Long: 103.649800°

2012 Alum. Cap,
#34980,
0.1' Below Ground
Lat: 38.351031°
Long: 103.631414°

VAL ENERGY, INC.

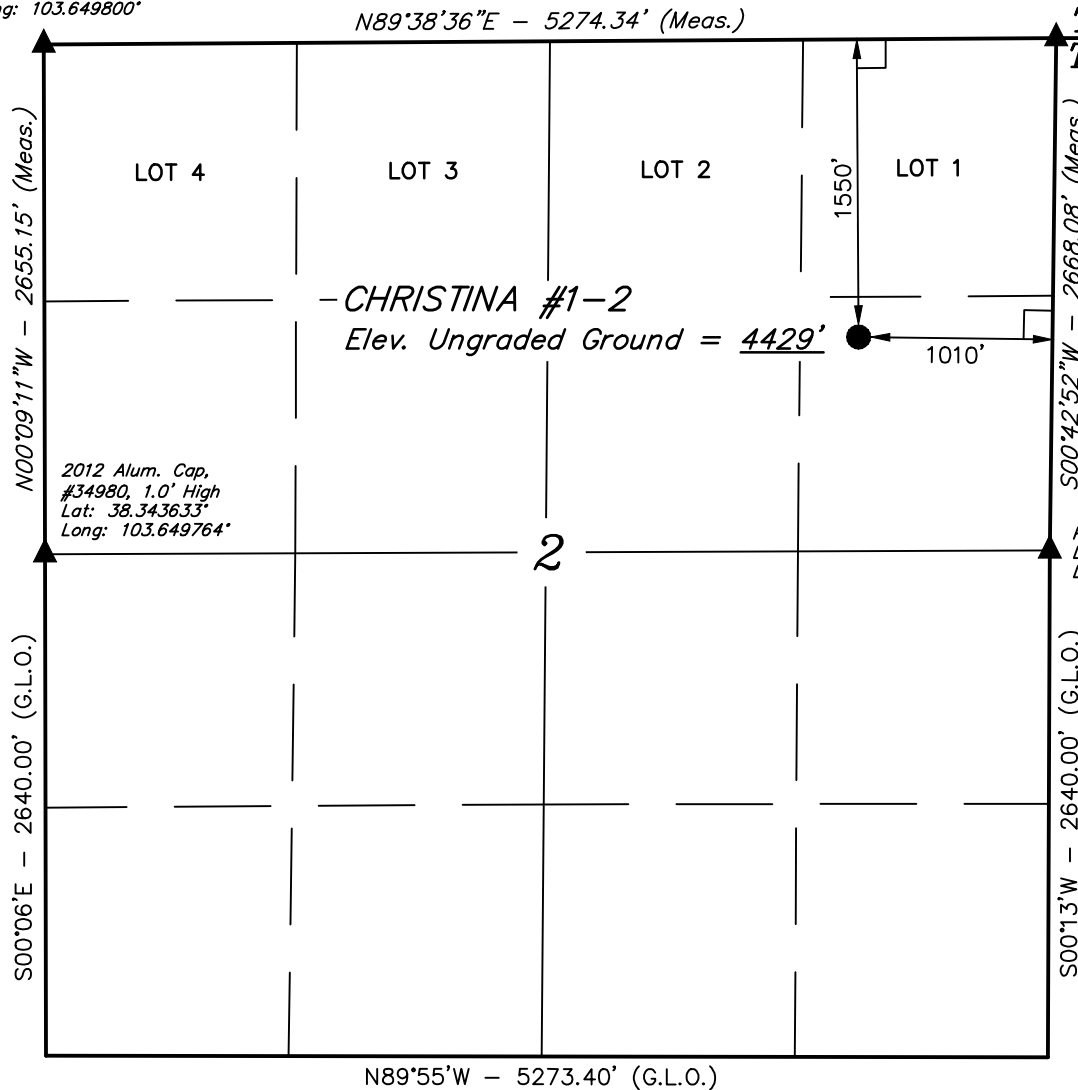
Well location, CHRISTINA #1-2, located as shown
in the SE 1/4 NE 1/4 of Section 2, T20S, R56W,
6th P.M., Crowley County, Colorado.

BASIS OF ELEVATION

BENCHMARK T83 LOCATED IN THE NORTHWEST CORNER OF
SECTION 1, T21S, R55W, 6th. P.M., TAKEN FROM 1988
PUBLISHED DATUM BY THE UNITED STATES DEPARTMENT OF
THE INTERIOR, GEOLOGICAL SURVEY AS BEING 4410.52 FEET.

BASIS OF BEARINGS

BASIS OF BEARINGS IS A G.P.S. OBSERVATION.



T19S
T20S

(Meas.)

(Meas.)

Pipe In Concrete
Lat: 38.343706°
Long: 103.631519°

(G.L.O.)

(Meas.)

(G.L.O.)

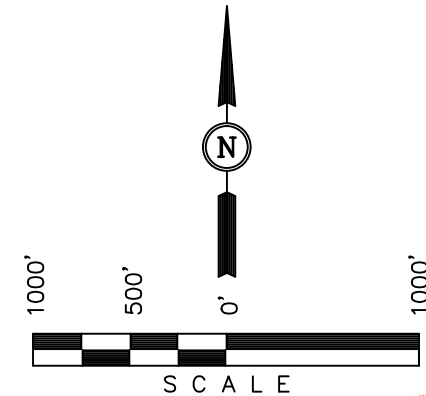
(G.L.O.)

LEGEND:

- └─┘ = 90° SYMBOL
- = PROPOSED WELL HEAD.
- ▲ = SECTION CORNERS LOCATED.

PDOP = 1.9

NAD 83 (SURFACE LOCATION)	
LATITUDE	= 38°20'48.31" (38.346753)
LONGITUDE	= 103°38'05.99" (103.634997)
NAD 27 (SURFACE LOCATION)	
LATITUDE	= 38°20'48.30" (38.346750)
LONGITUDE	= 103°38'04.19" (103.634497)



CERTIFICATION

THIS IS TO CERTIFY THAT THE ABOVE PLAT WAS PREPARED FROM
FIELD NOTES OF ACTUAL SURVEYS MADE BY ME OR UNDER MY
SUPERVISION AND THAT THE SAME ARE TRUE AND CORRECT TO THE
BEST OF MY KNOWLEDGE AND BELIEF.

REGISTERED LAND SURVEYOR
REGISTRATION NO. 28285
STATE OF COLORADO

UINTAH ENGINEERING & LAND SURVEYING
85 SOUTH 200 EAST - VERNAL, UTAH 84078
(435) 789-1017

SCALE 1" = 1000'	DATE SURVEYED: 10-30-13	DATE DRAWN: 11-06-13
PARTY D.N. G.W. J.S.	REFERENCES G.L.O. PLAT	
WEATHER COOL	FILE VAL ENERGY, INC.	