

**ANADARKO PETROLEUM CORP - EBUS
DO NOT MAIL - PO BOX 4995
THE WOODLANDS, Texas**

Badding 34N-2HZ

Majors 29

Post Job Summary **Cement Surface Casing**

Date Prepared: 11/11/2013
Version: 1

Service Supervisor: PICKELL, CHRISTOPHER

Submitted by: TRIER, DEREK

HALLIBURTON

HALLIBURTON

Wellbore Geometry

Job Tubulars					MD		Shoe Joint Length ft
Type	Description	Size in	ID in	Wt lbm/ft	Top ft	Bottom ft	
Casing	9 5/8" Surface Casing	9.63	8.921	36.00	0.00	1,241.00	42.66
Open Hole Section	13 1/2" Open Hole Section		13.500		0.00	1,251.00	0.00

HALLIBURTON

Pumping Schedule

Stage / Plug #	Fluid #	Fluid Type	Fluid Name	Surface Density lbm/gal	Avg Rate bbl/min	Surface Volume	Downhole Volume
1	1	Spacer	Fresh Water Spacer	8.33	2.00	10.0 bbl	10.0 bbl
1	2	Spacer	Mud Flush	8.40	2.00	12.0 bbl	12.0 bbl
1	1	Spacer	Fresh Water Spacer	8.33	2.00	10.0 bbl	10.0 bbl
1	3	Cement Slurry	SwiftCem B2	14.20	4.00	468.0 sacks	468.0 sacks

Fluids Pumped

Stage/Plug # 1 Fluid 1: Fresh Water Spacer
DUMMY MUD / FLUSH / SPACER SBC MATERIAL

Fluid Density: 8.33 lbm/gal
Fluid Volume: 10.00 bbl
Pump Rate: 2.00 bbl/min

Stage/Plug # 1 Fluid 2: Mud Flush
DUMMY MUD / FLUSH / SPACER SBC MATERIAL
3.5 lbm/bbl Mud Flush III
42 gal/bbl Mud Flush III

Fluid Density: 8.40 lbm/gal
Fluid Volume: 12.00 bbl
Pump Rate: 2.00 bbl/min

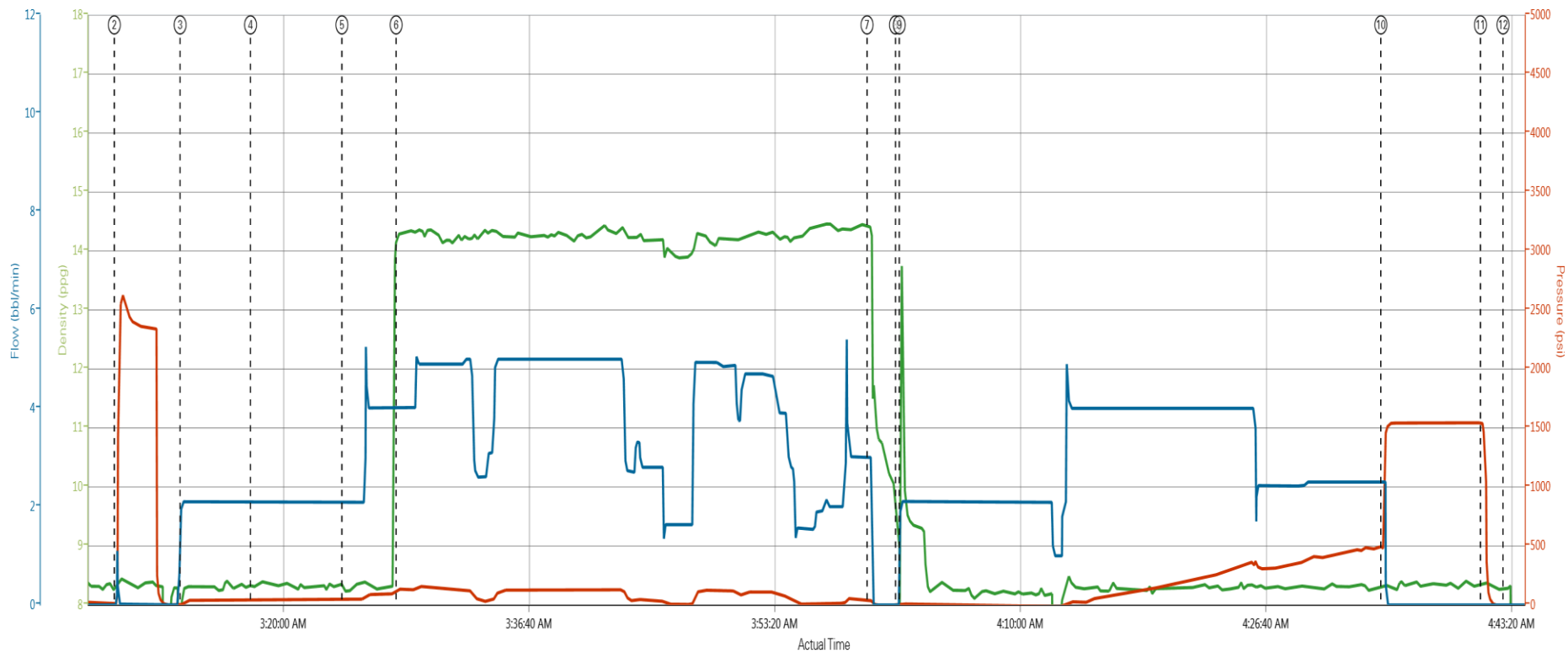
Stage/Plug # 1 Fluid 3: SwiftCem B2
SWIFTCEN (TM) SYSTEM

Fluid Weight: 14.20 lbm/gal
Slurry Yield: 1.53 ft³/sack
Total Mixing Fluid: 7.63 Gal
Surface Volume: 468.0 sacks
Sacks: 468.0 sacks

HALLIBURTON

Data Acquisition

BADDING 34N-2HZ 9 5/8" SURFACE



DH Density (ppg) PS Pump Press (psi) Comb Pump Rate (bbl/min)

1 Start Job 0.19;2.0 2 Pump Mudflush 8.31;43.2.1 3 Shutdown 14.41;43.3 4 Bump Plug 8.28;475.2.5
 5 Test Lines 8.33;12.0 6 Pump Water 8.19;48.2.1 7 Drop Top Plug 9.26;9.0 8 Check Floats 8.37;1543.0
 9 Pump Water 8.25;6.2.1 10 Pump Swiftcem 14.2# 14.34;131.4 11 Pump Displacement 13.41;4.2.1 12 End Job 8.29;7.0

▲ HALLIBURTON | iCem® Service

Created: 2013-11-03 21:29:35, Version: 2.0.606

Edit

HALLIBURTON

Service Supervisor Reports

Job Log

Date/Time	Chart #	Activity Code	Pump Rate	Cum Vol	Pump		Pressure (psig)		Comments
11/03/2013 14:30		Call Out							CREW CALLED OUT AT 1430 TO BE ON LOCATION AT 1830. CREW WAS PICKELL, JEWELL, VIATOR, MYRE. JOB WAS PUSHED BACK TO 2030
11/03/2013 20:00		Depart from Service Center or Other Site							SAFETY MEETING HELD THEN LEFT THE YARD FOR MAJOR 29
11/03/2013 20:30		Arrive At Loc							ARRIVE AT LOCATION ON TIME. RIG FINISHING PULLING DRILL PIPE TO BEGIN RUNNING CASNIG. RIG COMPLETED RUNNING CASING AT 0150
11/03/2013 20:50		Rig-Up Equipment							SET UP RAIN FOR RENT CONTAINMENT THEN RIG UP ALL EQUIPMENT
11/04/2013 02:40		Pre-Job Safety Meeting							SAFETY MEETING CONDUCTED WITH ALL PERSONEL ON LOCATION TO DISCUSS JOB SAFETY AND PROCEDURE
11/04/2013 03:03		Start Job							QUICK LATCH PLUG CONTAINER USED FOR JOB
11/04/2013 03:08		Test Lines	1	3				2500.0	PRESSURE TEST LINES TO 2500 PSI. CHECK FOR VISIBLE LEAKS AND PRESSURE LOSS
11/04/2013 03:13		Pump Spacer 1	2	10				60.0	PUMP WATER. RETURNS BEGAN WITH 1 BBL AWAY
11/04/2013 03:17		Pump Spacer 2	2	12				70.0	PUMP MUDFLUSH
11/04/2013 03:24		Pump Spacer 1	2	10				80.0	PUMP WATER
11/04/2013 03:27		Pump Cement	5	128.4				160.0	PUMP SWIFCEM CEMENT 468 SKS 14.2 PPG 1.54 CUFT/SK 7.67 GAL/SK
11/04/2013 03:59		Shutdown							WASH PUMPS AND LINES ON TOP OF THE PLUG
11/04/2013 04:01		Drop Top Plug							PLUG PRELOADED. WITNESSED BY COMPANY MAN
11/04/2013 04:01		Pump Displacement	4	94				450.0	PUMP DISPLACEMENT USING WATER. CALCULATED DISPLACEMENT WAS 92.6 BBL
11/04/2013 04:34		Bump Plug	2.5					475.0	CALCULATED PRESSURE TO LAND WAS 376. PLUG LANDED WITH 475 PSI GOING 1000 PSI OVER
11/04/2013 04:41		Check Floats						1543.0	PRESSURE WAS HELD FOR 7 MINUTES THEN RELEASED. FLOATS HELD. 1 BBL BACK TO TANKS
11/04/2013 04:42		End Job							3 BBL OF CEMENT BACK TO SURFACE
11/04/2013 04:45		Pre-Rig Down Safety Meeting							SAFETY MEETING HELD TO DISCUSS RIG DOWN
11/04/2013 04:50		Rig-Down Equipment							RIG DOWN ALL EQUIPMENT. BLOW DOWN LINES. NO SPILLS
11/04/2013 06:00		Depart Location for Service Center or Other Site							SAFETY MEETING CONDUCTED FOR JOURNEY TO YARD THEN LEFT LOCATION

The Road to Excellence Starts with Safety

Sold To #: 300466	Ship To #: 3195394	Quote #:	Sales Order #: 900874715
Customer: ANADARKO PETROLEUM CORP - EBUS		Customer Rep: Balkenbush, Bob	
Well Name: Badding		Well #: 34N-2HZ	API/UWI #:
Field: WATTENBERG	City (SAP): FORT LUPTON	County/Parish: Weld	State: Colorado
Contractor: Majors		Rig/Platform Name/Num: Majors 29	
Job Purpose: Cement Surface Casing			
Well Type: Development Well		Job Type: Cement Surface Casing	
Sales Person: PLIENESS, RYAN	Srvc Supervisor: PICKELL, CHRISTOPHER		MBU ID Emp #: 396838

Job Personnel

HES Emp Name	Exp Hrs	Emp #	HES Emp Name	Exp Hrs	Emp #	HES Emp Name	Exp Hrs	Emp #
JEWELL, WILLIAM Uris	0.0	503358	MYRE, JAMES	0.0	549859	PICKELL, CHRISTOPHER Lee	0.0	396838
VIATOR, JASON R.	0.0	550394						

Equipment

HES Unit #	Distance-1 way	HES Unit #	Distance-1 way	HES Unit #	Distance-1 way	HES Unit #	Distance-1 way
10679720C	10 mile	11019824C	10 mile	11562562	10 mile	11605597	10 mile
11667703C	10 mile						

Job

Job Times

Formation Name				Date	Time	Time Zone
Formation Depth (MD)	Top	Bottom		Called Out	03 - Nov - 2013	14:30 MST
Form Type	BHST			On Location	03 - Nov - 2013	20:30 MST
Job depth MD	1251. ft	Job Depth TVD	1251. ft	Job Started	04 - Nov - 2013	03:03 MST
Water Depth		Wk Ht Above Floor	5. ft	Job Completed	04 - Nov - 2013	04:42 MST
Perforation Depth (MD)	From	To		Departed Loc	04 - Nov - 2013	06:00 MST

Well Data

Description	New / Used	Max pressure psig	Size in	ID in	Weight lbm/ft	Thread	Grade	Top MD ft	Bottom MD ft	Top TVD ft	Bottom TVD ft
13 1/2" Open Hole Section				13.5				.	1251.		
9 5/8" Surface Casing	Unknown		9.625	8.921	36.		J-55	.	1241.		

Fluid Data

Stage/Plug #: 1

Fluid #	Stage Type	Fluid Name	Qty	Qty uom	Mixing Density lbm/gal	Yield ft3/sk	Mix Fluid Gal/sk	Rate bbl/min	Total Mix Fluid Gal/sk
---------	------------	------------	-----	---------	------------------------	--------------	------------------	--------------	------------------------

1	Fresh Water Spacer		10.00	bbl	8.33			2.0	
2	Mud Flush		12.00	bbl	8.4			2.0	
3.5 lbm/bbl		MUD FLUSH III, 40 LB SACK (101633304)							
42 gal/bbl		MUD FLUSH III - SBM (528788)							
1	Fresh Water Spacer		10.00	bbl	8.33			2.0	
3	SwiftCem B2	SWIFTCEN (TM) SYSTEM (452990)	468.0	sacks	14.2	1.53	7.63	4.0	7.63
7.63 Gal		FRESH WATER							
Calculated Values		Pressures		Volumes					
Displacement		Shut In: Instant		Lost Returns	0	Cement Slurry		Pad	
Top Of Cement		5 Min		Cement Returns	-	Actual Displacement	94	Treatment	
Frac Gradient		15 Min		Spacers	-	Load and Breakdown		Total Job	
Rates									
Circulating		Mixing		Displacement		Avg. Job			
Cement Left In Pipe	Amount	42.66 ft	Reason	Shoe Joint					
Frac Ring # 1 @	ID		Frac ring # 2 @	ID		Frac Ring # 3 @	ID		Frac Ring # 4 @
The Information Stated Herein Is Correct				Customer Representative Signature					

