



Scale: 5" / 100'
Measured Depth Log

Well Name	Badding 34N-2HZ		
Location	NWSW SECTION 35, T2N, R66W		
State	COLORADO	County	WELD
Country	USA	Rig Number	ENSIGN 145
API Number	05-123-38287	AFE #	2087135
Region	DJ BASIN	Field	WATTENBERG
Spud Date	12/4/2013	Drilling Completed	12/12/2013
Surface Coordinates	2412' FSL x 851' FWL		
Bottom Hole Coordinates	SECTION 2, T1N, R66W 1' FSL x 180' FWL		
Ground Elevation	5102'	K.B. Elevation	5115'
Logged Interval	6800'	To	15188'
Formation	NIOBRARA B CHALK		
Type of Drilling Fluid	FW LSND		

Company Anadarko
Address 1099 18th STR
DENVER, CO 8

Name RHEAD CANNON
Company ANADARKO PER
Address 1099 18th STR
DENVER, CO 8

COLUMBINE LOGGING, INC
WELL-SITE GEOLOGISTS

Operator

EET.
00202

Geologist

ON

ETROLEUM.

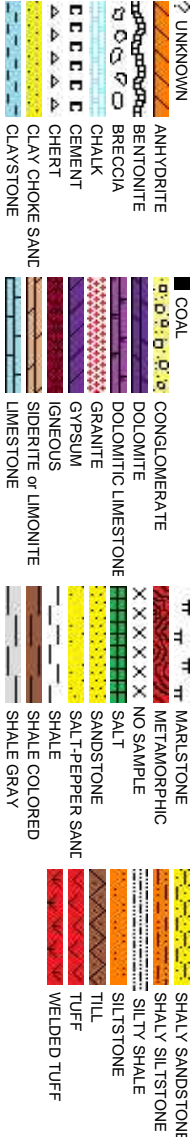
EET.
00202

Other

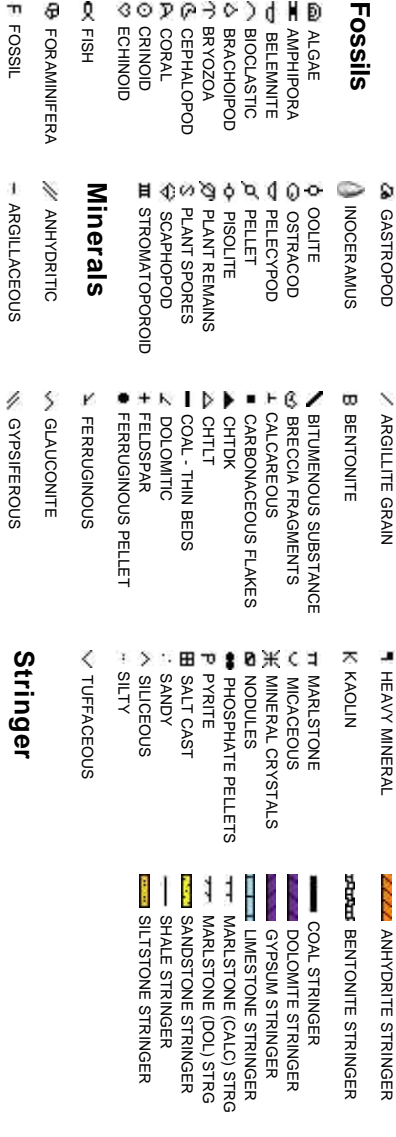
2385 S. Lipan St.
Denver, CO 80223

JOEY LUCE
MARK RAIMO

Rock Types

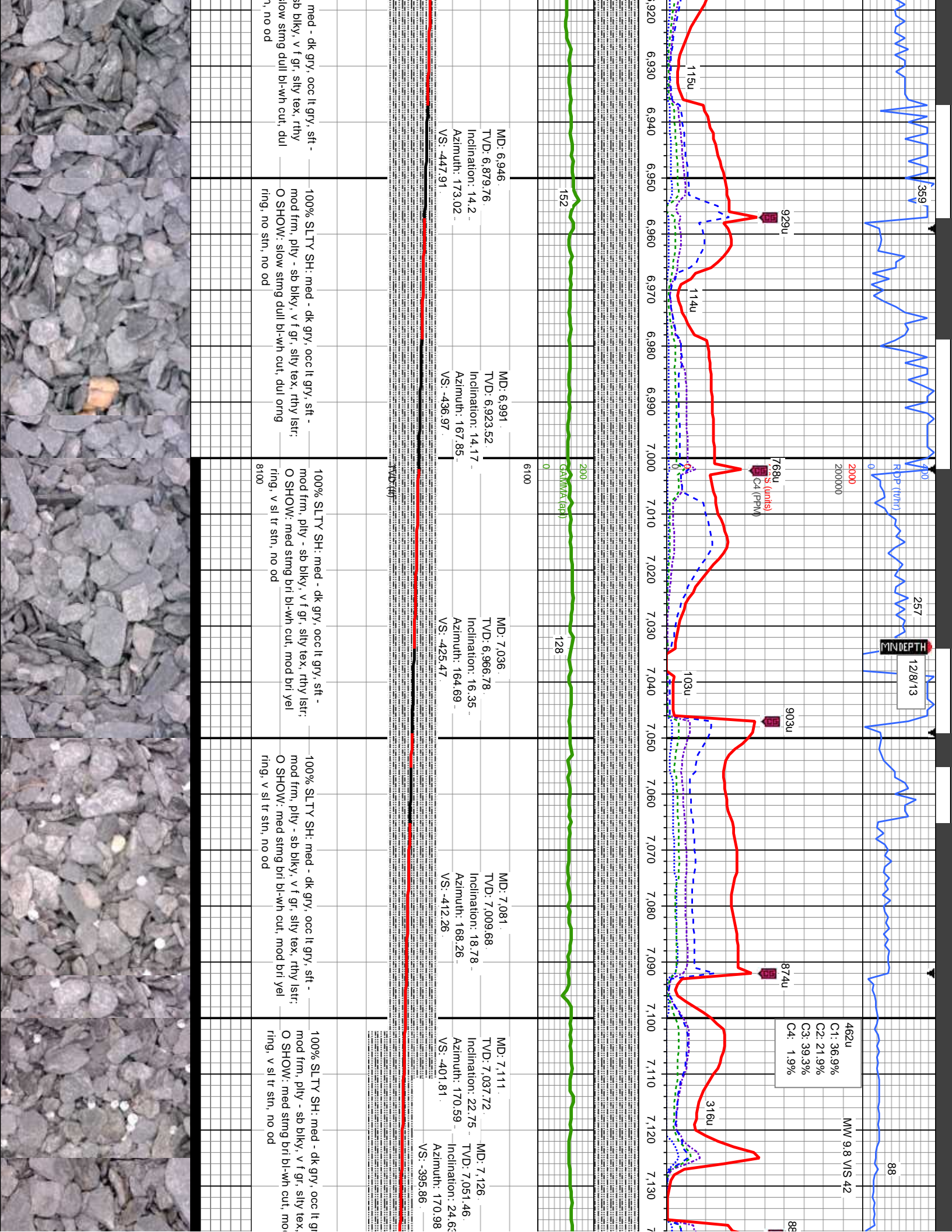


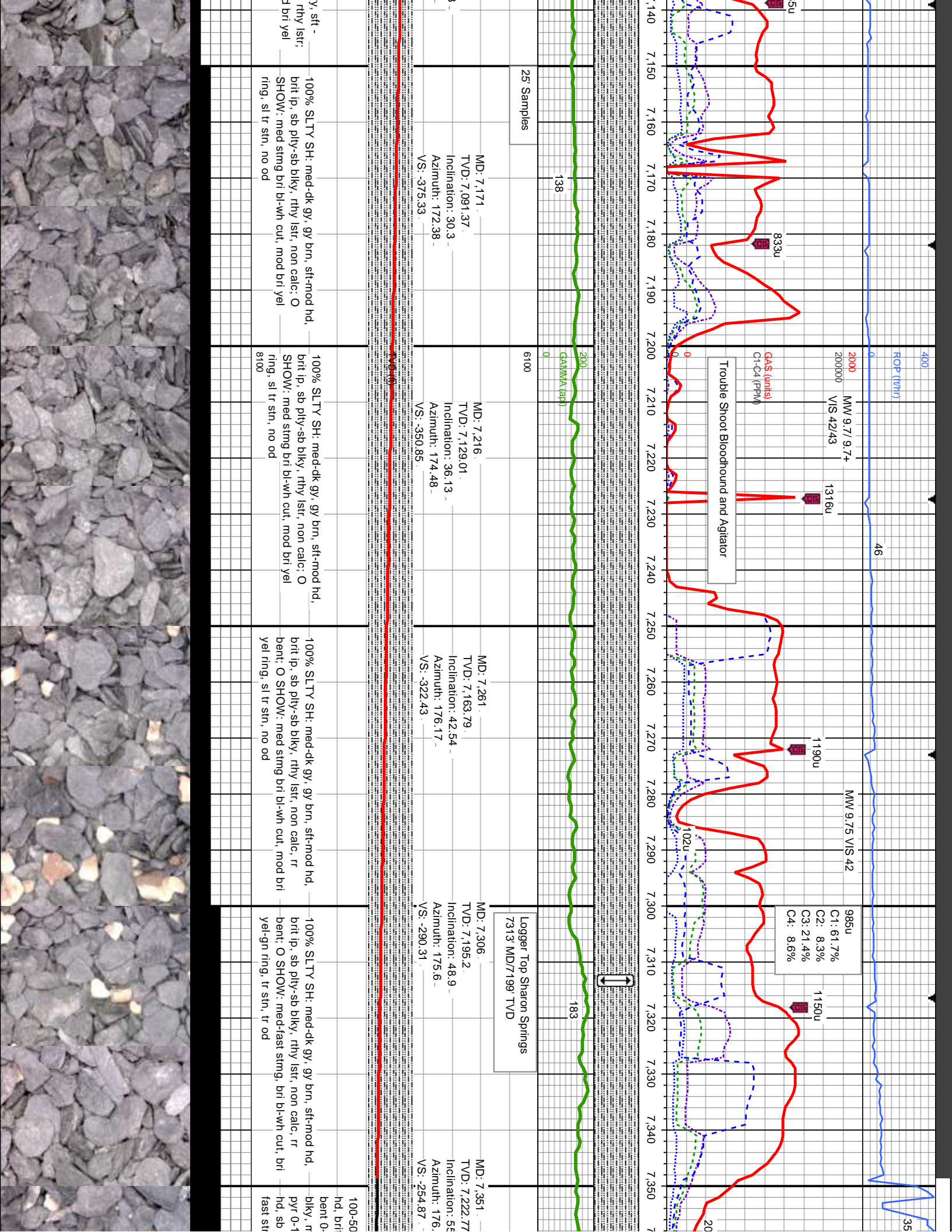
Accessories

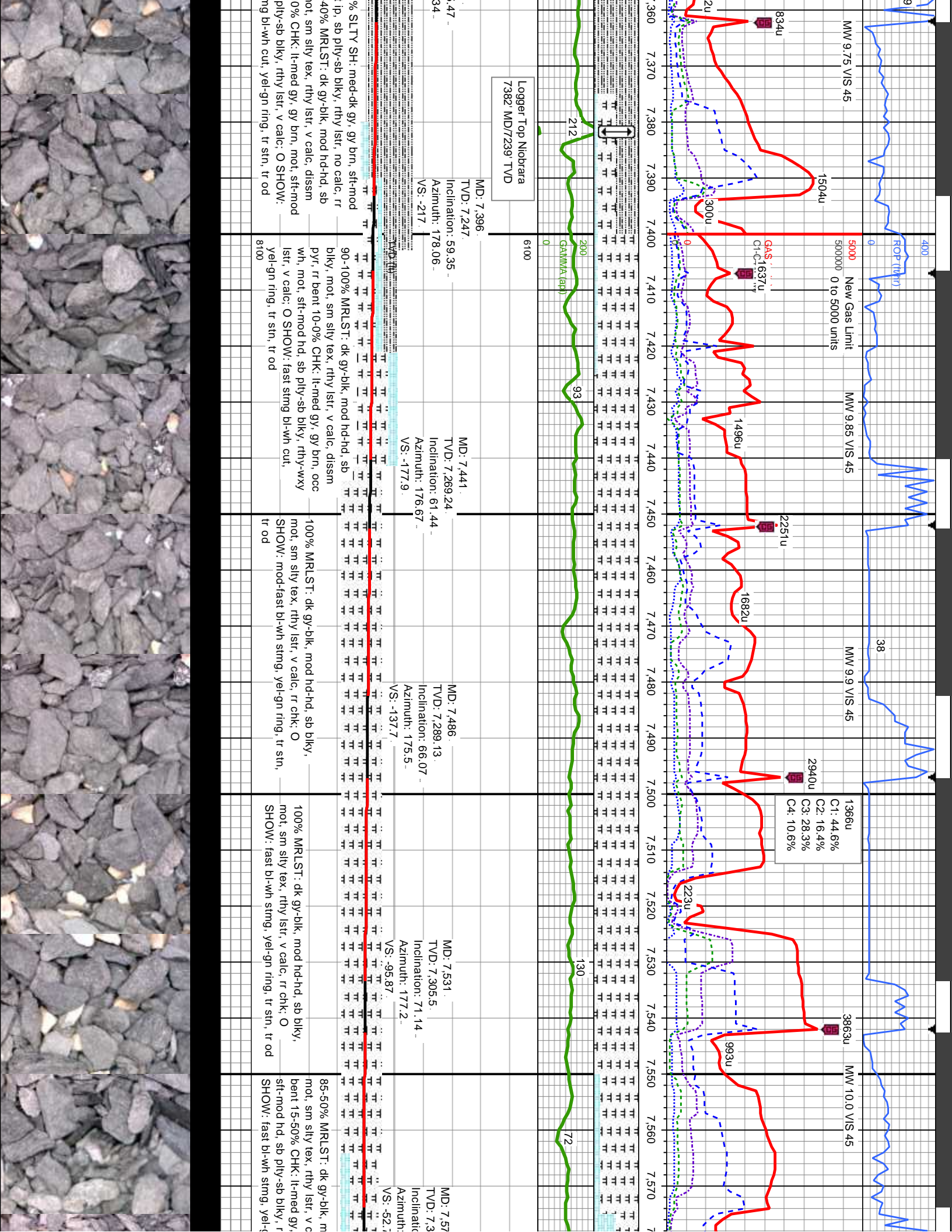


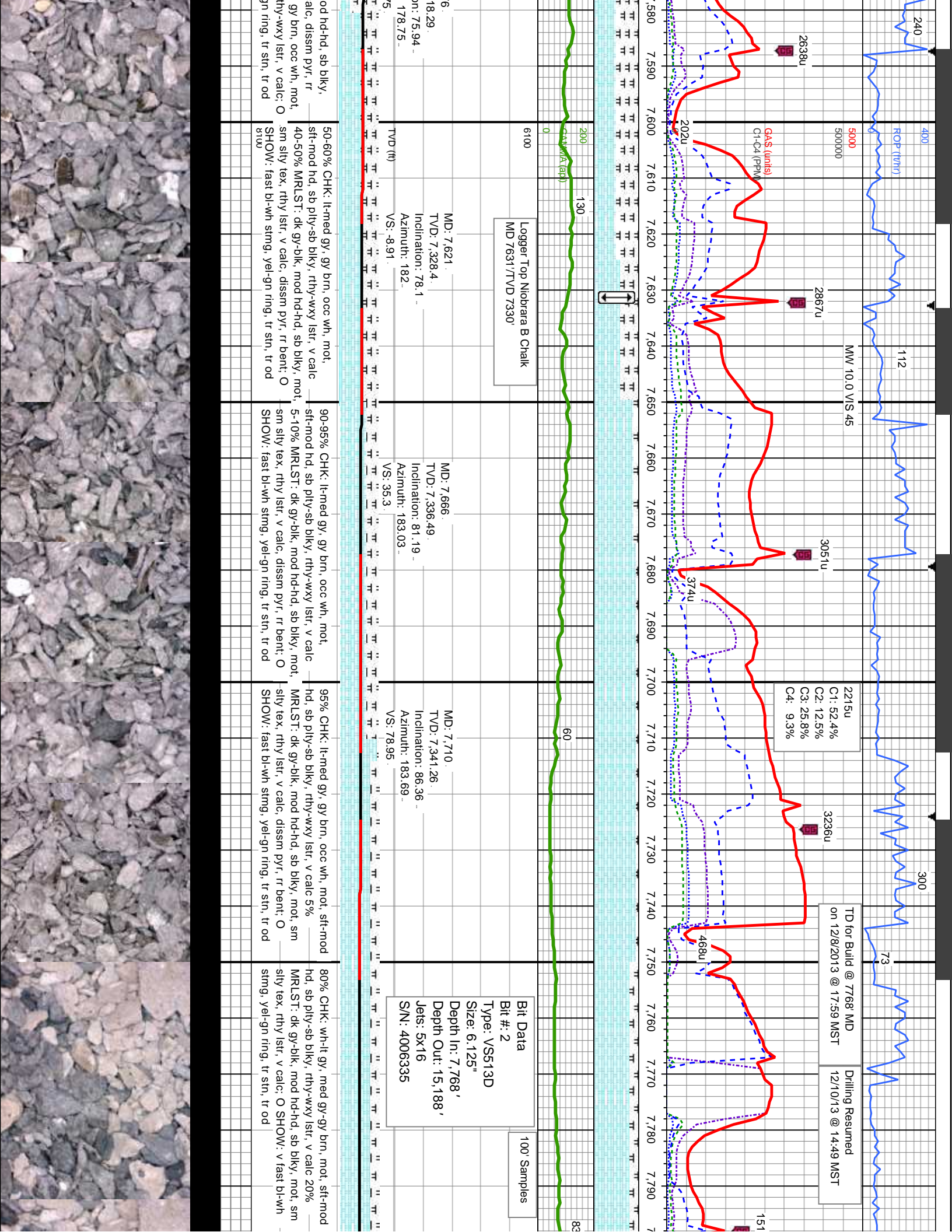
Other Symbols

Oil Show	P PINPOINT V VUGGY	⋮ DST INTERVAL / FAULT	▽ WIRELINE TESTED - LEFT △ WIRELINE TESTED - RT	E EARTHY FX FINELY XLN
Engineering	D DEAD ● EVEN ○ QUESTIONABLE ▲ BIT ● SPOTTED STAINING ▲ CONNECTION (UP)	↕ FORMATION TOP ✖ GAS SHOW ● OIL SHOW MN DEPTH UP MN DEPTH (DOWN)	📏 DRILL STEM TEST MINDEPTH MN DEPTH MN DEPTH UP MN DEPTH (DOWN)	ES GRAINSTONE L LITHOGRAPHIC MX MICROXLN MS MUDSTONE
Porosity	▼ CONNECTION (DOWN) E EARTHY F FENESTRAL F FRACTURE X INTERCRYSTALLINE Ø INTERPOULTIC J MOLDIC O ORGANIC	CONNECTION GAS CONNECTION GAS (LEFT) TRIP GAS TRIP GAS (LEFT) DOWN TIME GAS DOWN TIME GAS (LEFT) CORE - LOST CORE - RECOVERED	▲ ANGULAR R ROUNDED B SUBANG M SUBRND NORMAL FAULT OVERTURNED STRATA REVERSE FAULT CASING SIDEWALL CORE (LEFT) SIDEWALL CORE (RIGHT) SLIDE SURVEY	PS PACKSTONE WS WACKSTONE M MODERATE P POOR W WELL
				Sorting
				Textures
				BS BOUNDSTONE C CHALKY CX CRYPTOXLN









240
400
ROP (ft/hr)
112
300
73

2638u
5000
500000
2867u
MMW 10.0 VIS 45
3051u
374u
3236u
468u
151

Gas (units)
C1-C4 (PPM)

5,800 7,590 7,600 7,610 7,620 7,630 7,640 7,650 7,660 7,670 7,680 7,690 7,700 7,710 7,720 7,730 7,740 7,750 7,760 7,770 7,780 7,790 7,800

200
130
60
0

Logger Top Niobrara B Chalk
MD 7631/TVD 7330'

Bit Data
Bit #: 2
Type: VS513D
Size: 6.125"
Depth In: 7,768'
Depth Out: 15,188'
Jets: 5x16
S/N: 4006335

100' Samples

MD: 7.621
TVD: 7.328.4
Inclination: 78.1
Azimuth: 182
VS: 8.91

MD: 7.666
TVD: 7.336.49
Inclination: 81.19
Azimuth: 183.03
VS: 35.3

MD: 7.710
TVD: 7.341.26
Inclination: 86.36
Azimuth: 183.69
VS: 78.95

50-60% CHK: lt-med gy, gy brn, occ wh, mot, sft-mod hd, sb ply-sb blk, rthy-wxy lstr, v calc 40-50% MRLST: dk gy-blk, mod hd-hd, sb blk, mot, sm silty tex, rthy lstr, v calc, dissim pyr, rr bent, O SHOW: fast bl-wh stmg, yel-gn ring, tr stn, tr od

90-95% CHK: lt-med gy, gy brn, occ wh, mot, sft-mod hd, sb ply-sb blk, rthy-wxy lstr, v calc 5-10% MRLST: dk gy-blk, mod hd-hd, sb blk, mot, sm silty tex, rthy lstr, v calc, dissim pyr, rr bent, O SHOW: fast bl-wh stmg, yel-gn ring, tr stn, tr od

95% CHK: lt-med gy, gy brn, occ wh, mot, sft-mod hd, sb ply-sb blk, rthy-wxy lstr, v calc 5% MRLST: dk gy-blk, mod hd-hd, sb blk, mot, sm silty tex, rthy lstr, v calc, dissim pyr, rr bent, O SHOW: fast bl-wh stmg, yel-gn ring, tr stn, tr od

80% CHK: wh-lt gy, med gy-gy brn, mot, sft-mod hd, sb ply-sb blk, rthy-wxy lstr, v calc 20% MRLST: dk gy-blk, mod hd-hd, sb blk, mot, sm silty tex, rthy lstr, v calc, O SHOW: v fast bl-wh stmg, yel-gn ring, tr stn, tr od



